



TONGVA

brianna gorton
design graphics iii sheldon nemoy
landscape architecture 2020





INTRODUCTION 1

HISTORY 2

CONCEPT 4

SITE ANALYSIS 5

SITE PLAN. 6

POINTS OF INTEREST 12

TREES AND PLANTINGS 14

AMENITIES AND MATERIALS 16

ABOUT ME



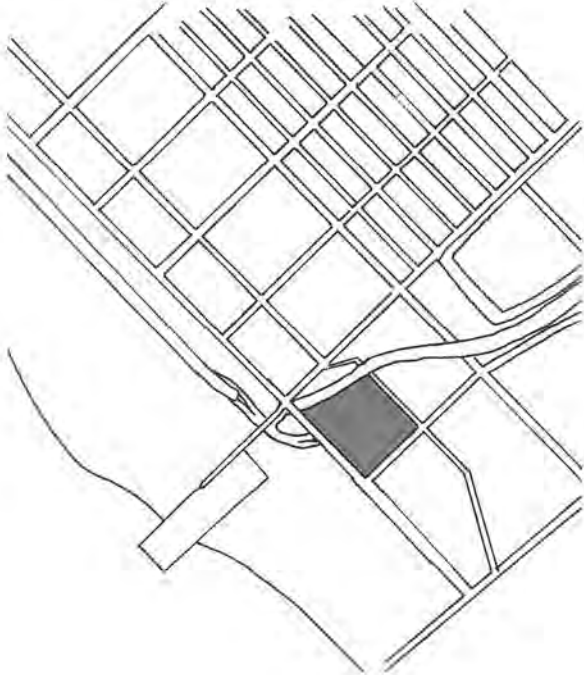
I am passionate about landscape architecture because I want to take action in our private and public urban spaces, creating wildlife habitats with native, edible, eco-friendly landscapes that are dynamic in terms of both design and ecology. My passion for the native California landscape was fostered as a child, growing up in the Santa Monica Mountains and riding on horseback into the High Sierras.

My background in fine art – namely, large-scale painting and sculpture – informs my view of the landscape as art: painterly and sculptural in terms of color, texture, form and composition. Working for the past 6 years as an Art Director and Researcher in TV and film has given me design experience in drafting and 3d modeling, and my horticulture training as a Master Gardener informs my appreciation for gardens as living, breathing, evolving plants communities and ecosystems. - BRIANNA GORTON

TONGVA PARK LOCATION



California

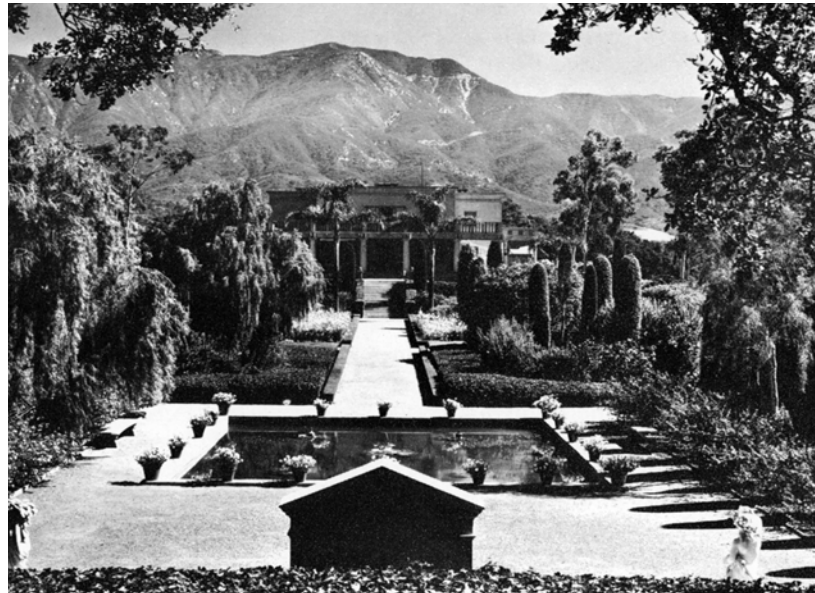


Santa Monica

HISTORY



Tongva Park is named after the indigenous Tongva people that lived off the land, prior to the arrival of Europeans. The park design looks to their basket weaving, the native plants that lived among them

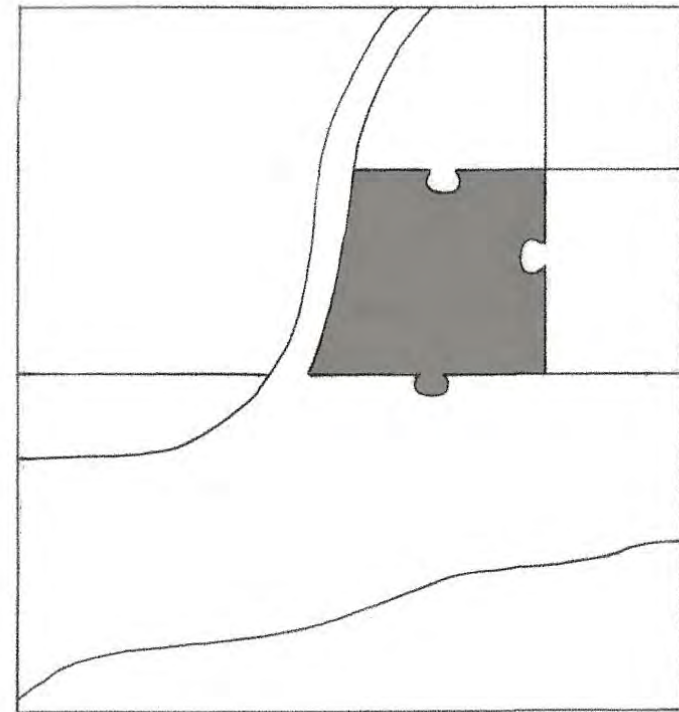
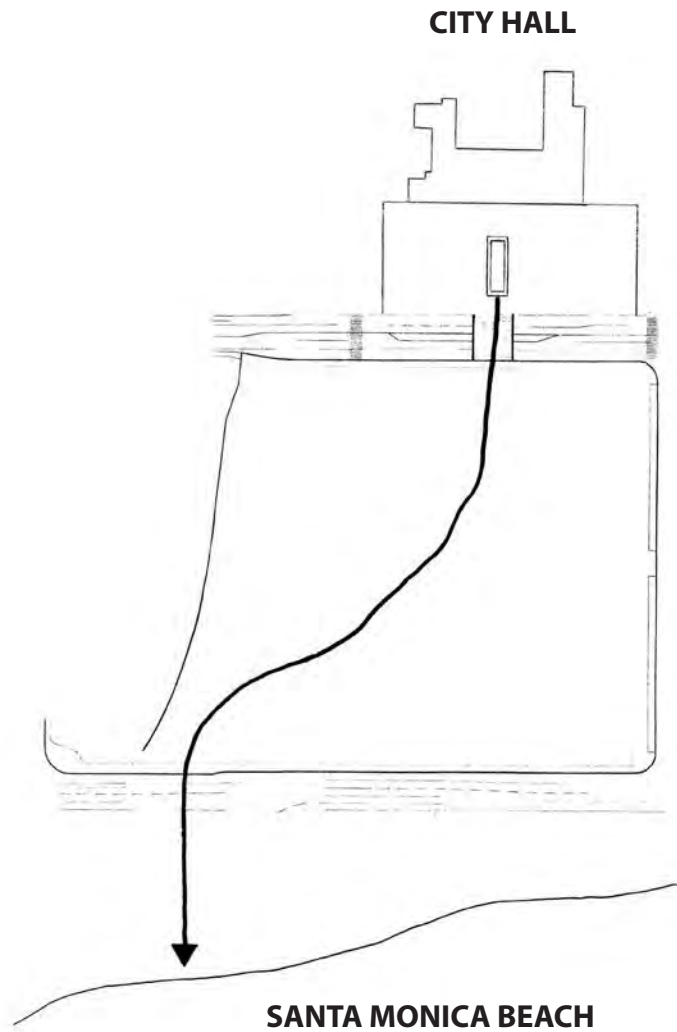




and the curves of the land that existed in the water basins, rivers, and hills.

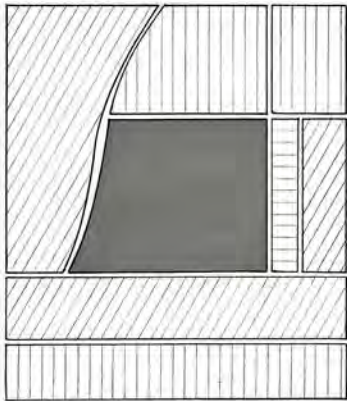
The park also nods to the Spanish California missions in the way the park is a direct extension of Santa Monica City Hall.

CONCEPT

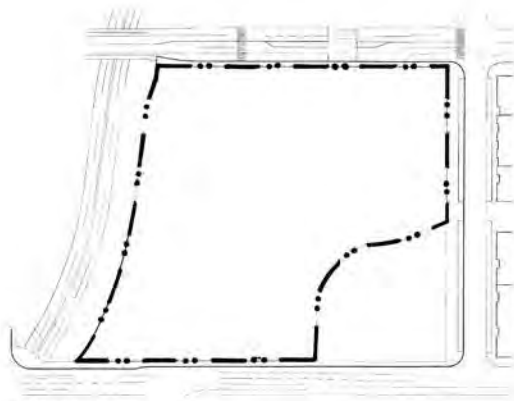


Tongva Park serves as a puzzle piece that connects the different parts of Santa Monica City: City Hall and the commercial, private, residential spaces with the Santa Monica Beach.

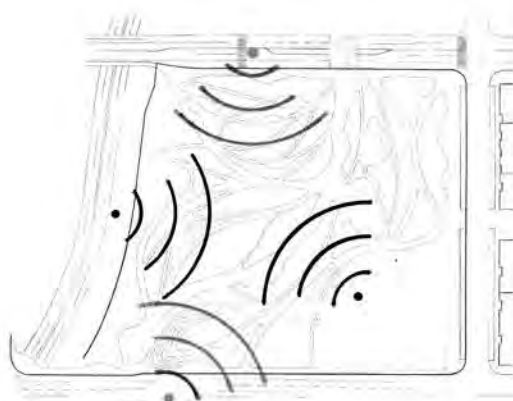
SITE ANALYSIS



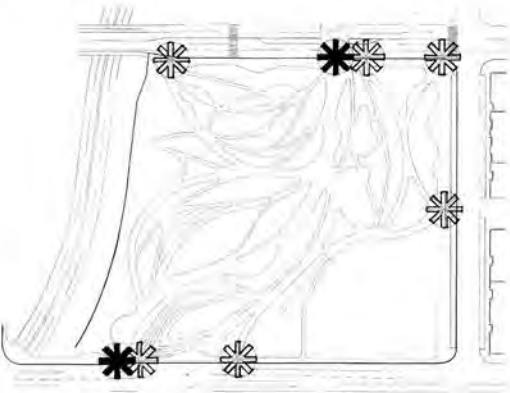
- CONTEXT
- RESIDENTIAL
 - COMMERCIAL
 - PUBLIC



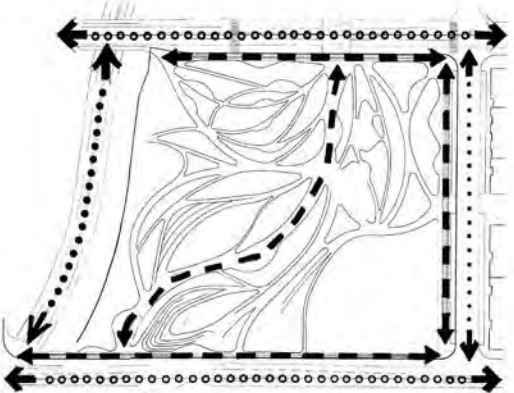
PROPERTY LINE



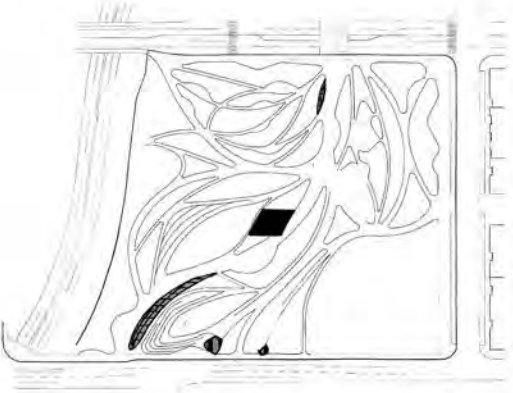
- NOISE
- PRIMARY
 - SECONDARY



- ACCESS POINTS
- PRIMARY
 - SECONDARY

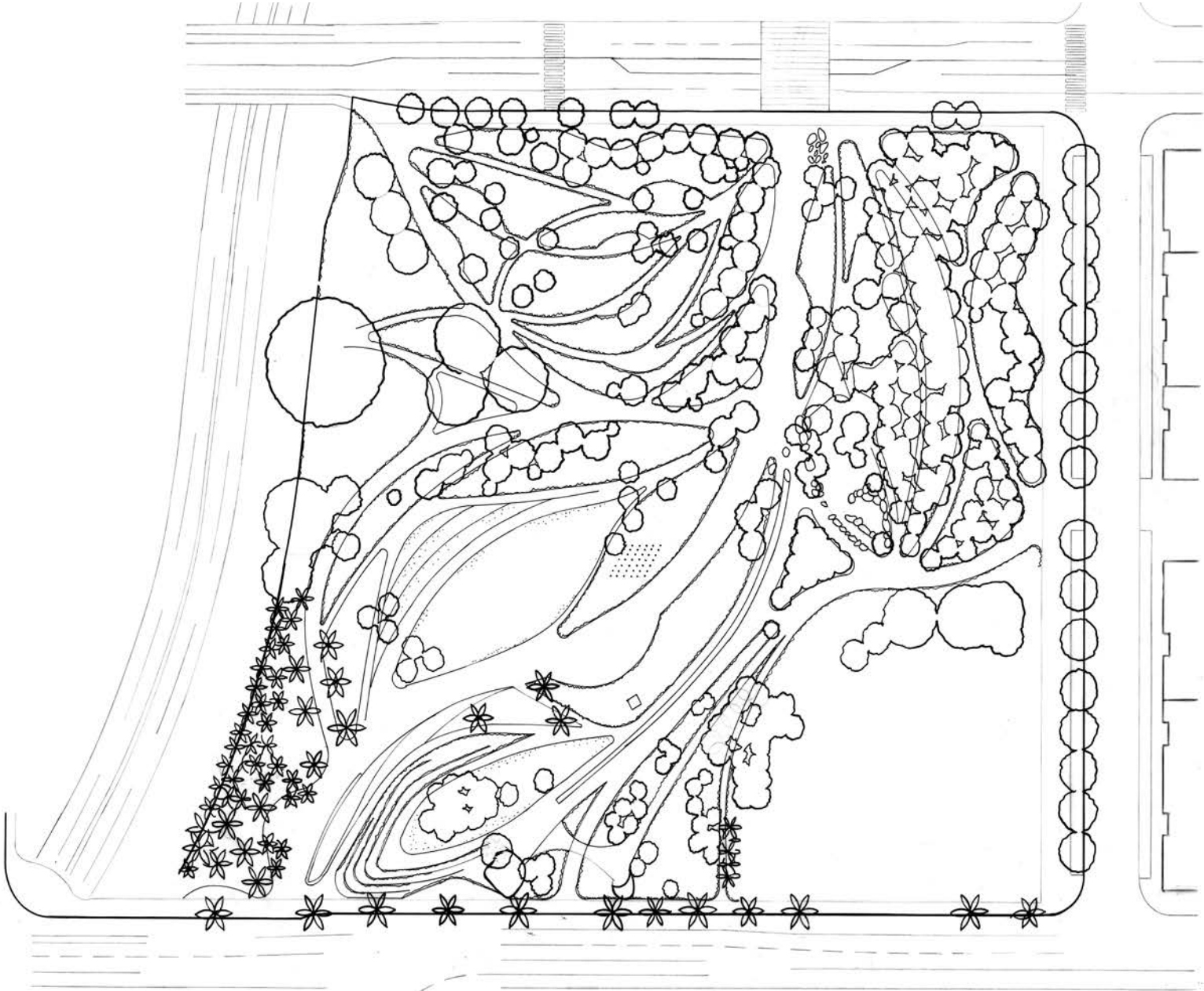


- VEHICULAR CIRCULATION PEDESTRIAN CIRCULATION
- PRIMARY
 - SECONDARY
 - TERTIARY
 - PRIMARY



- POINTS OF INTEREST
- ART
 - OVERLOOK
 - FOUNTAIN

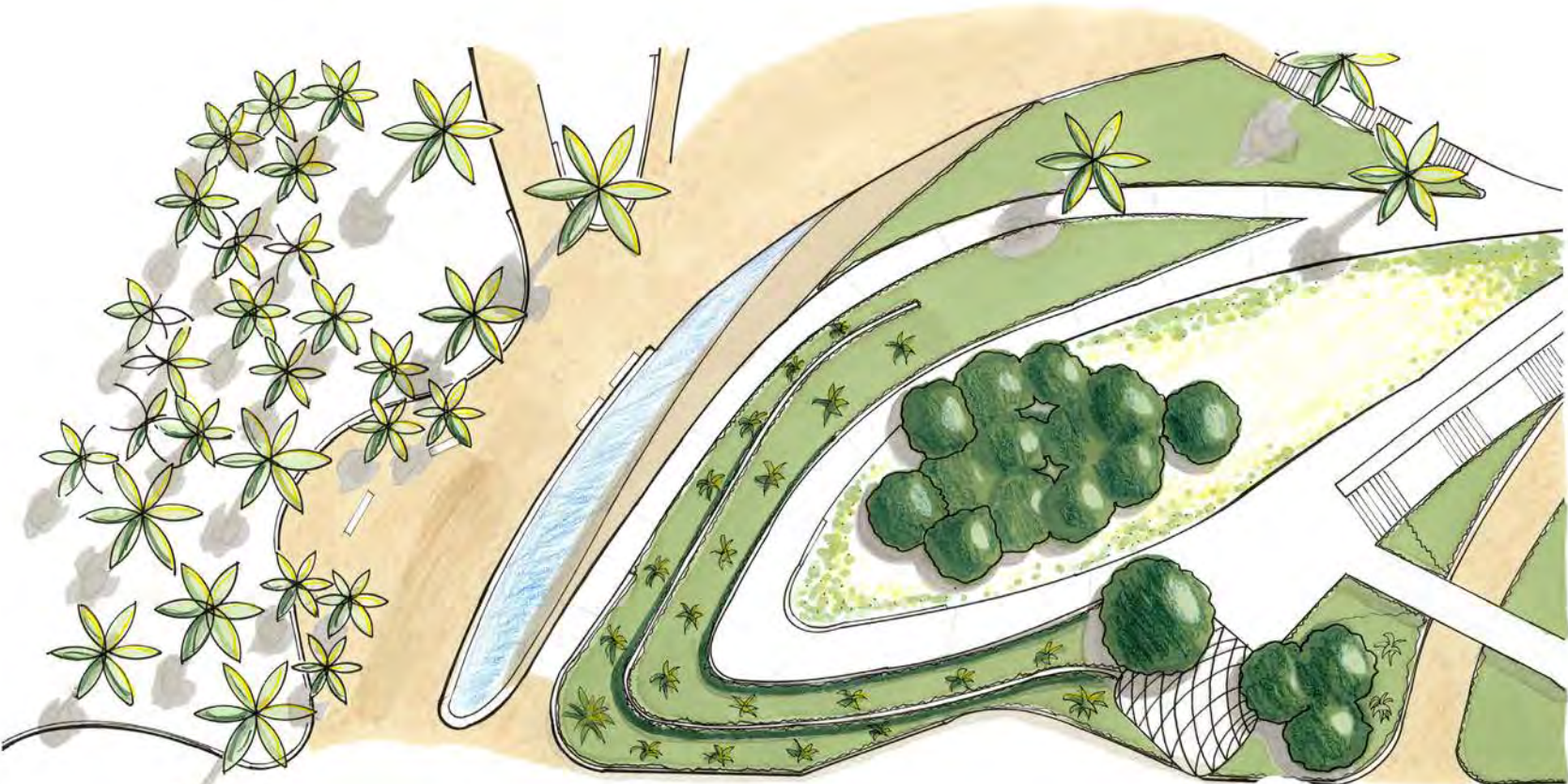
SITE PLAN



ILLUSTRATIVE PLAN

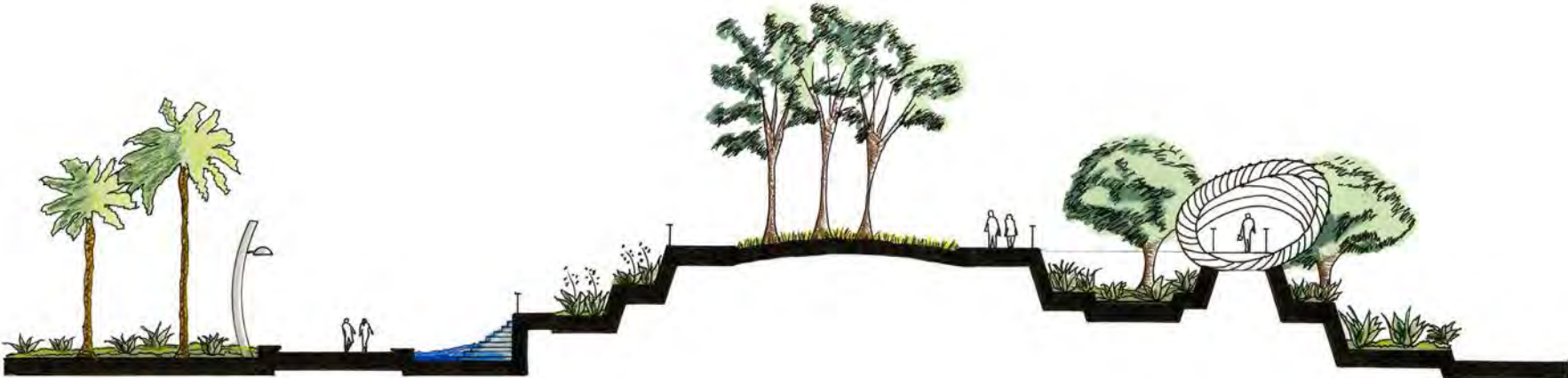


ENLARGEMENT



FOUNTAIN ENTRANCE FROM OCEAN AVE TO BRIDGE ENTRANCE AT OCEAN AVE

SECTION ELEVATION



FOUNTAIN ENTRANCE FROM OCEAN AVE TO BRIDGE ENTRANCE AT OCEAN AVE

PERSPECTIVE SKETCHES



BRIDGE ENTRANCE FROM OCEAN AVE



FOUNTAIN ENTRANCE FROM OCEAN AVE



VIEW OF WEATHER SCULPTURE



MAIN ENTRANCE FROM OCEAN AVE

POINTS OF INTEREST



FOUNTAIN

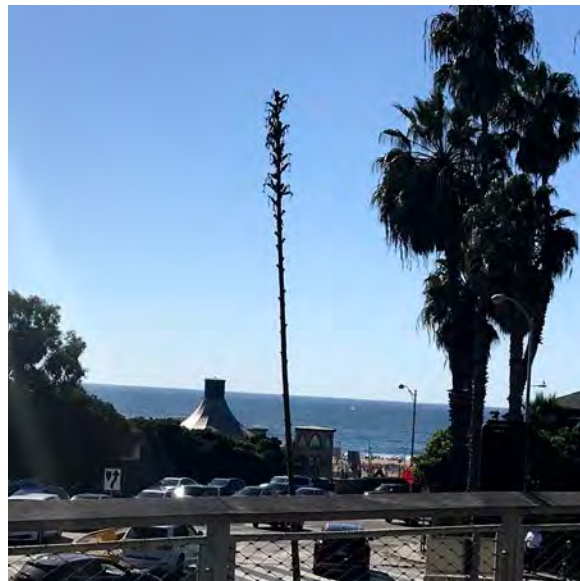


PUBLIC ART

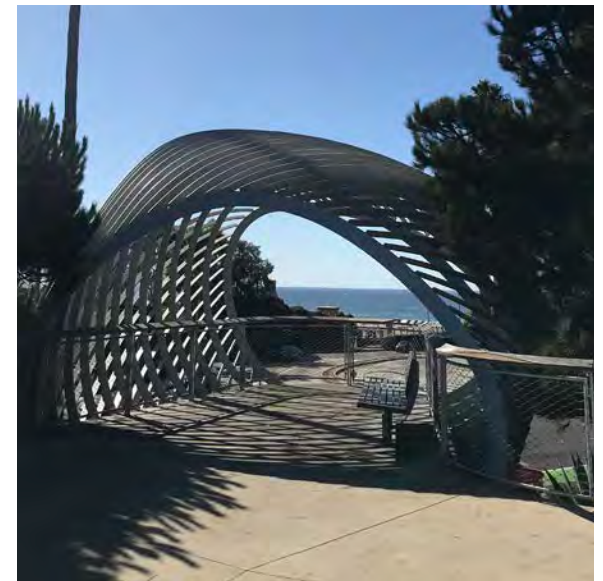
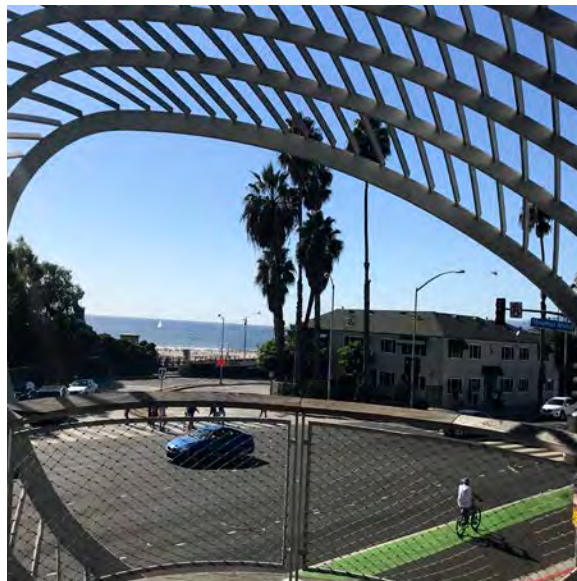




OVERLOOKS



OCEAN VIEWS



TREES



AFRICAN ALOE



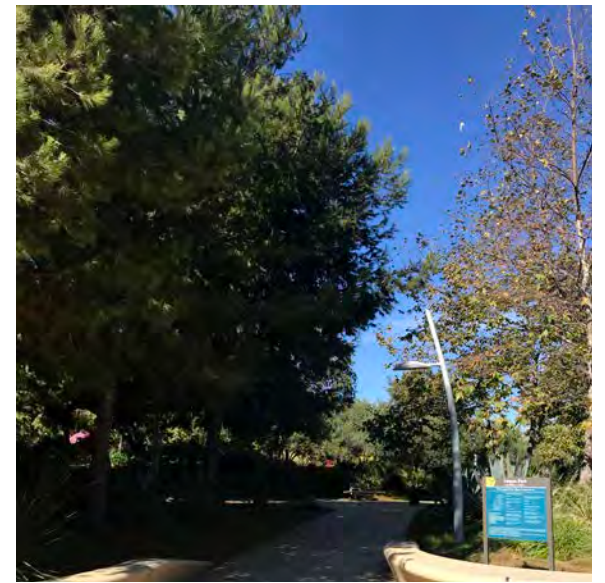
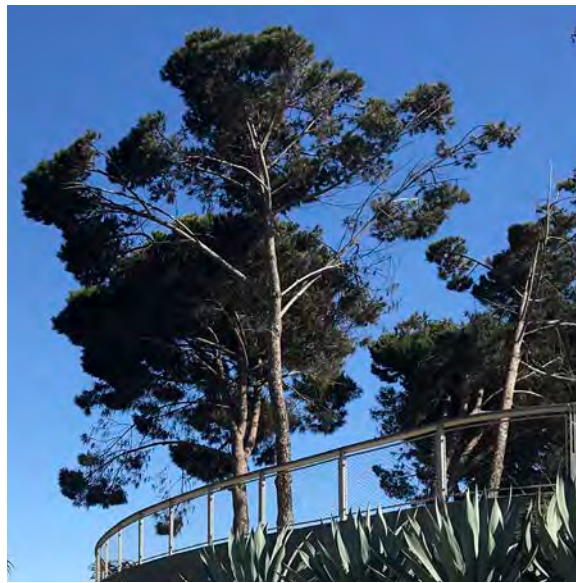
OAK



PALMS



CONIFERS



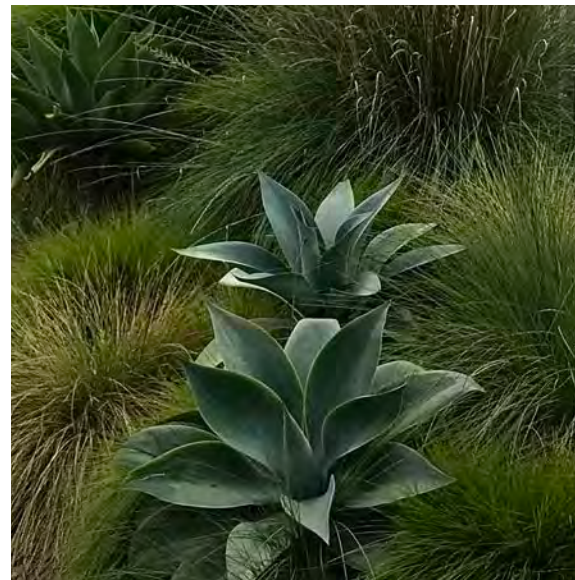
PLANTINGS



SUCCULENTS



GRASSES



AMENITIES



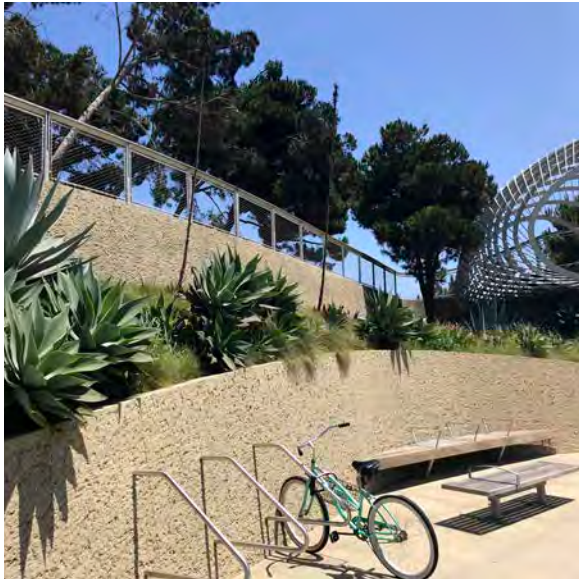
BENCHES



RETAINING WALL SEATING



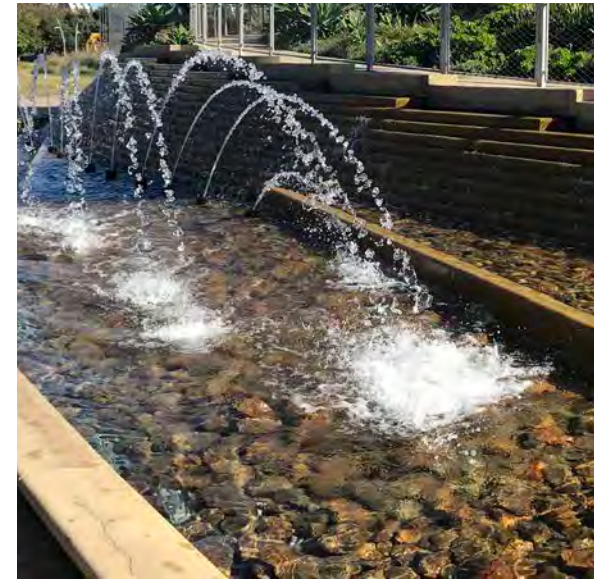
BIKE RACKS



MATERIALS



STONE, WOOD & WATER





SPECIAL THANKS TO SHELDON NEMOY