

# MELNITZ STAIRS

---

Landscape Design Plan

Designed by Kira Becker  
March 2020  
Smith

# SITE ANALYSIS

Current view from top of steps at site

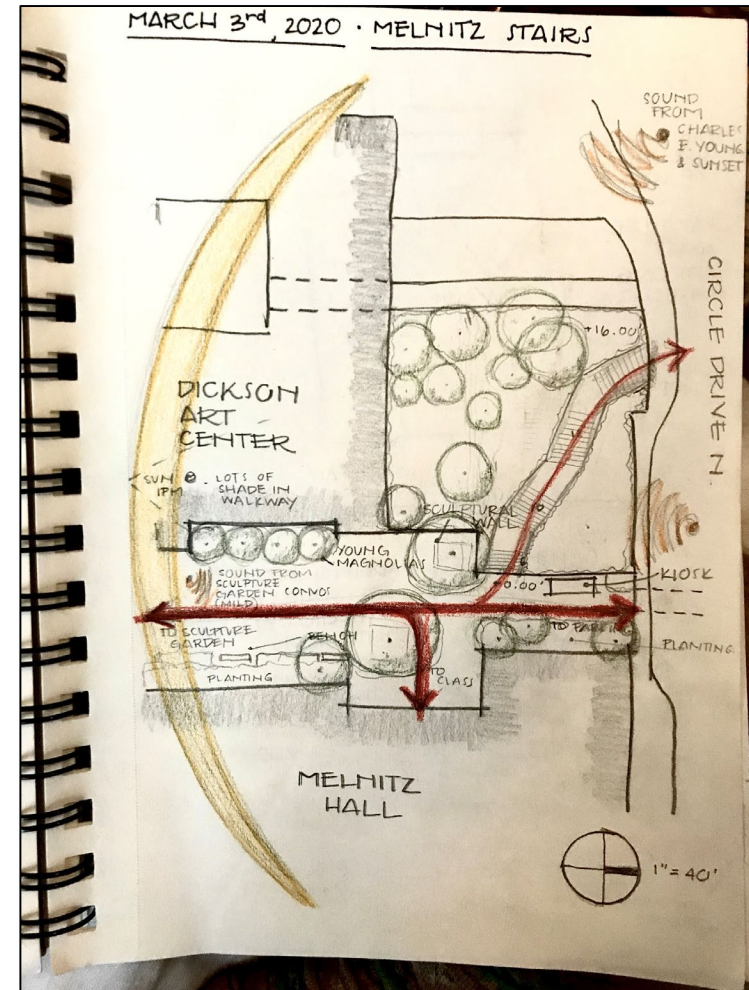


Current view from bottom of steps



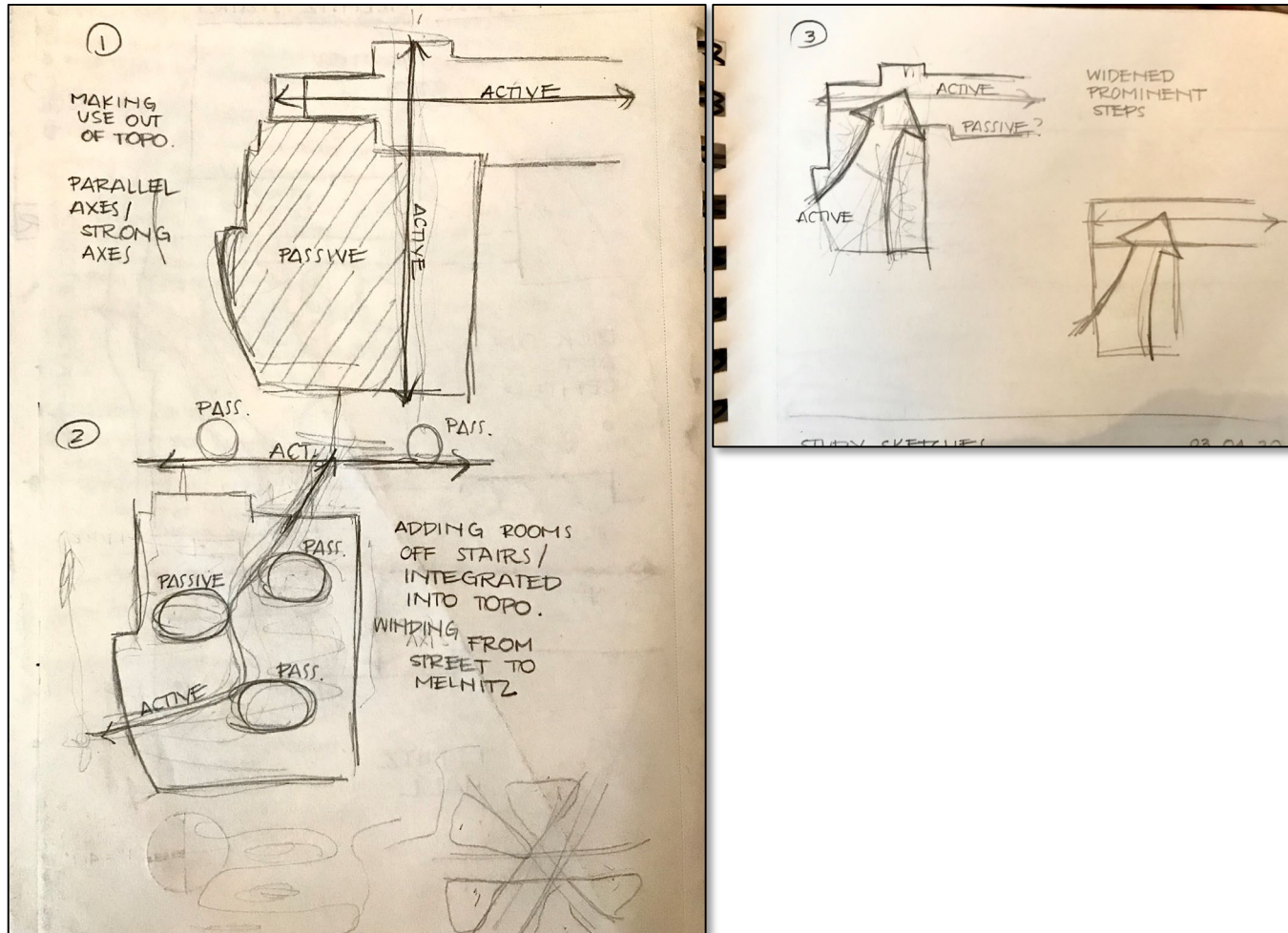
- **PURPOSE:** Stairs connect parking garage to Melnitz Hall and Murphy Sculpture Garden
- **PEDESTRIAN CIRCULATION:** Strong consistent flow from sculpture garden to parking garage, bursts of strong flow in and out of Melnitz Hall, medium but consistent flow up and down Melnitz stairs
- **SUN PATH:** Area receives slight sun in AM from the east, but is mainly shaded throughout the day
- **SOUND:** Light traffic sounds from Charles E. Young and Sunset

*The project site has the potential to be an attraction and a gathering spot for students, their families, and the community. It has the potential to be a strong entrance to Melnitz Hall and Theater, as well as the sculpture garden.*





# THREE DESIGN CONCEPTS

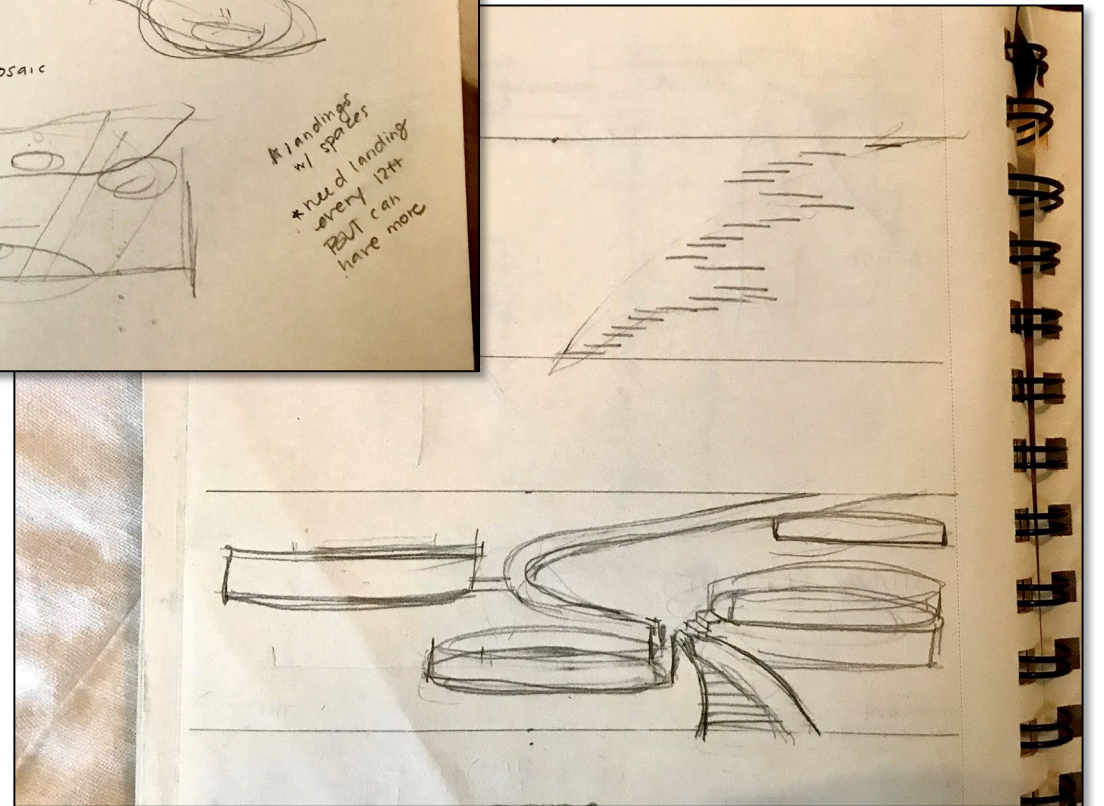
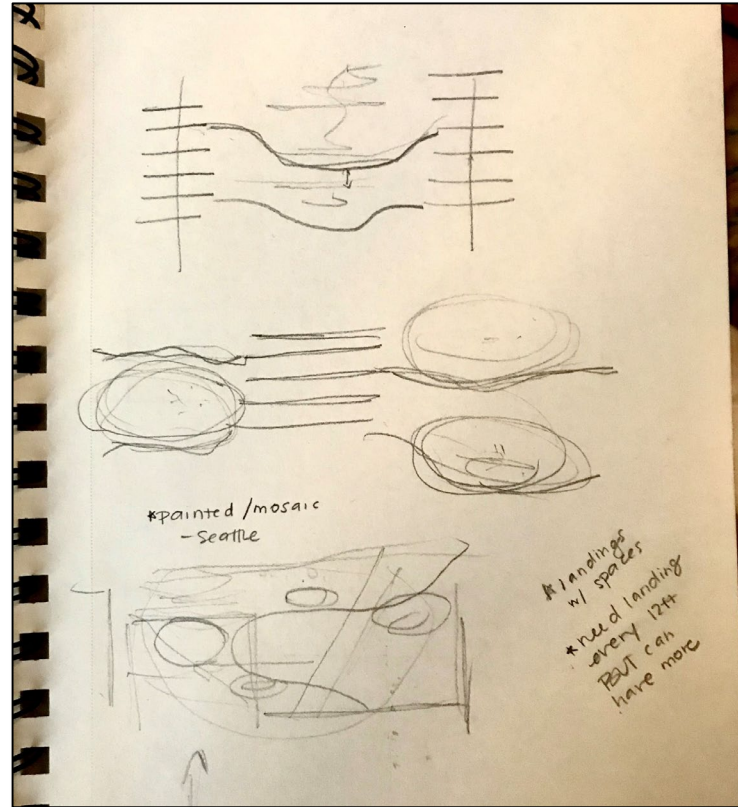


1. Strong parallel axes and dividing up site to include passive & active space
2. Winding path with passive “rooms” off path, giving people sense of “journey” and “destination”
3. Widened prominent steps that take over majority topography and provide a “grand staircase” entrance

*Ultimately, I felt that the site and its current open and unused topography called for a mixed use of active and passive space. After evaluating my three design concepts, I decided that dividing the passive space into several “rooms” for people to enjoy across a wandering slightly winded, and abstract, staircase would optimize the space by allowing for a pleasant experience while remaining functional.*

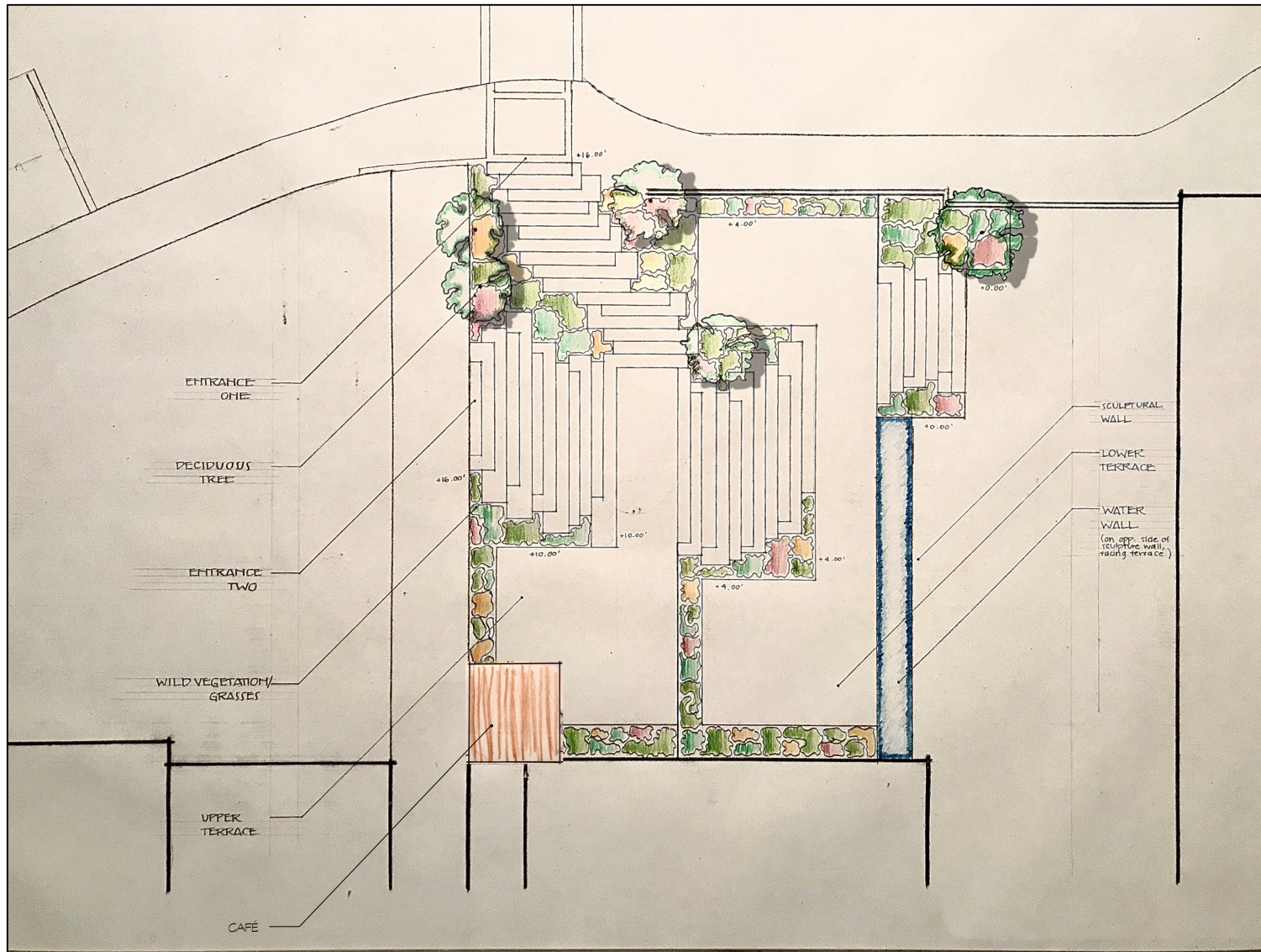
# CONCEPT SKETCHES

*Wandering winding stairs with independent rooms... while sketching I decided that I liked the idea of utilizing the two required landings to act as connecting points to each of the rooms. At first, I thought I wanted to the rooms to be round enclosures, but with several iterations and a little refinement, I ultimately decided to keep the rooms rectilinear and as open as possible to optimize the space available.*





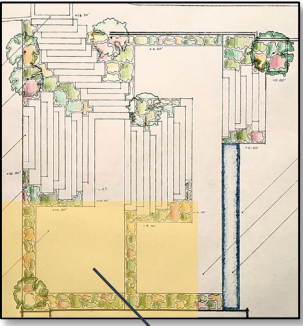
# SITE PLAN



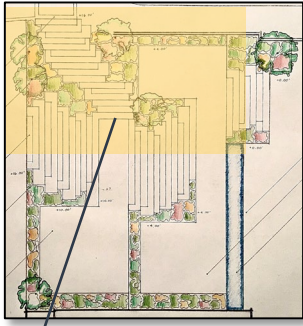
The stairs have two entrances, one aligned with the parking garage and crosswalk, and one connecting to the path to the Dickson Art Center. The stairs themselves are modern, rectilinear, and asymmetrical concrete. The harsh angles and walls are softened by the wild vegetative border, which consists of natural growing grasses and shrubs, with several deciduous trees to provide light shade and a sense of enclosure. There are a total of three “rooms” off of the steps, one located on the “upper terrace” at 10’ and the other two located on opposite ends of the staircase from one another on the “lower terrace” at 6’. There will be a small café kiosk located on the larger upper terrace to draw people in, and bistro seating and benches sprinkled throughout the three terraces to be used as café seating or study/recreational use. On the opposite site of the sculpture wall that is facing Melnitz Hall, I have incorporated a water wall fountain that faces the stairs and adds a dual purpose to the divider wall and provides a soothing acoustic and visual experience for those using the stairs or the terraces.



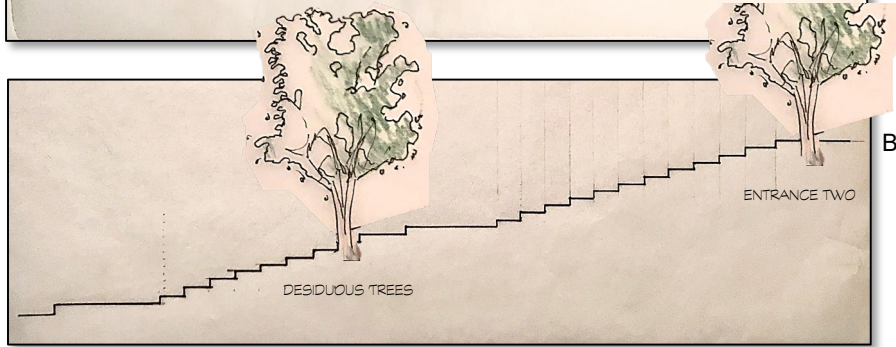
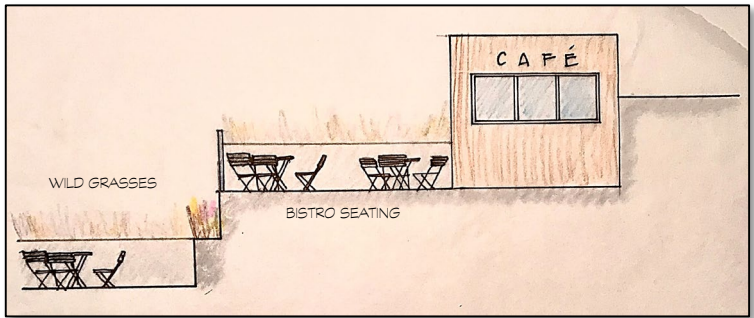
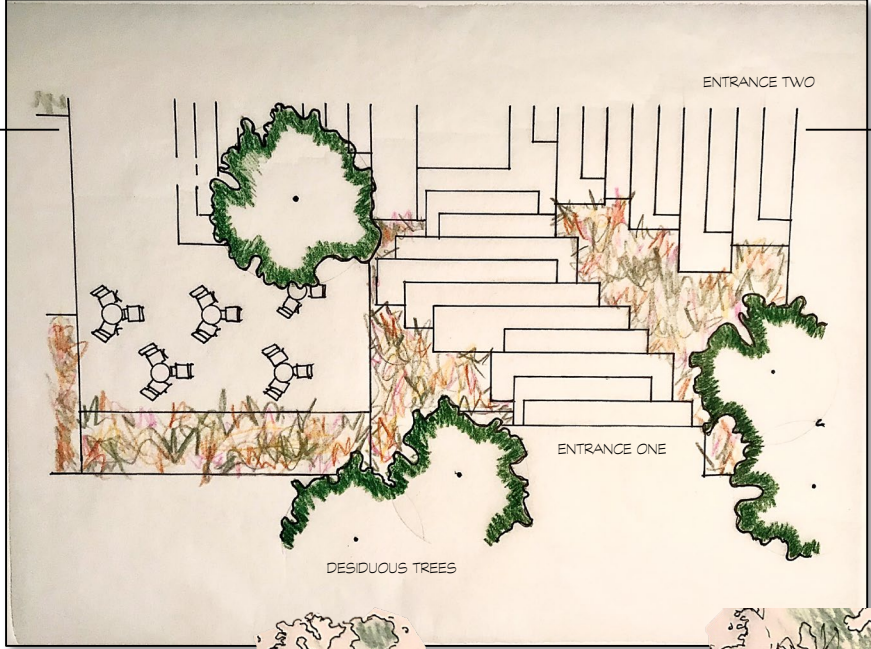
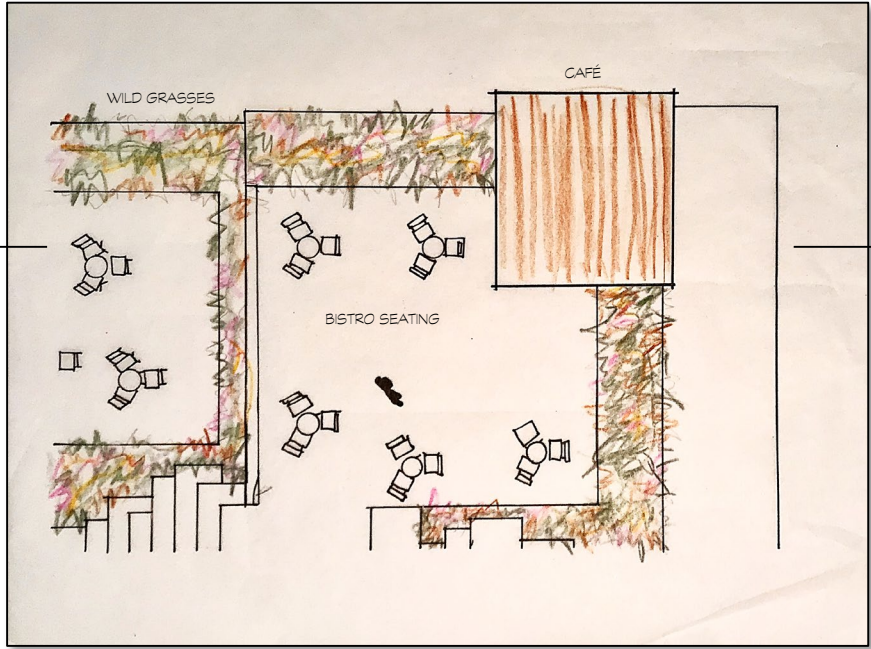
# ENLARGEMENTS & SECTION-ELEVATIONS



Rotated 180°

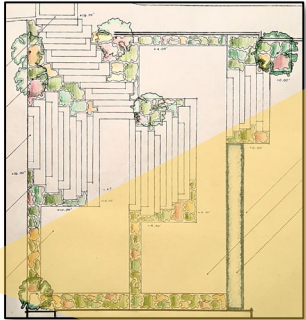
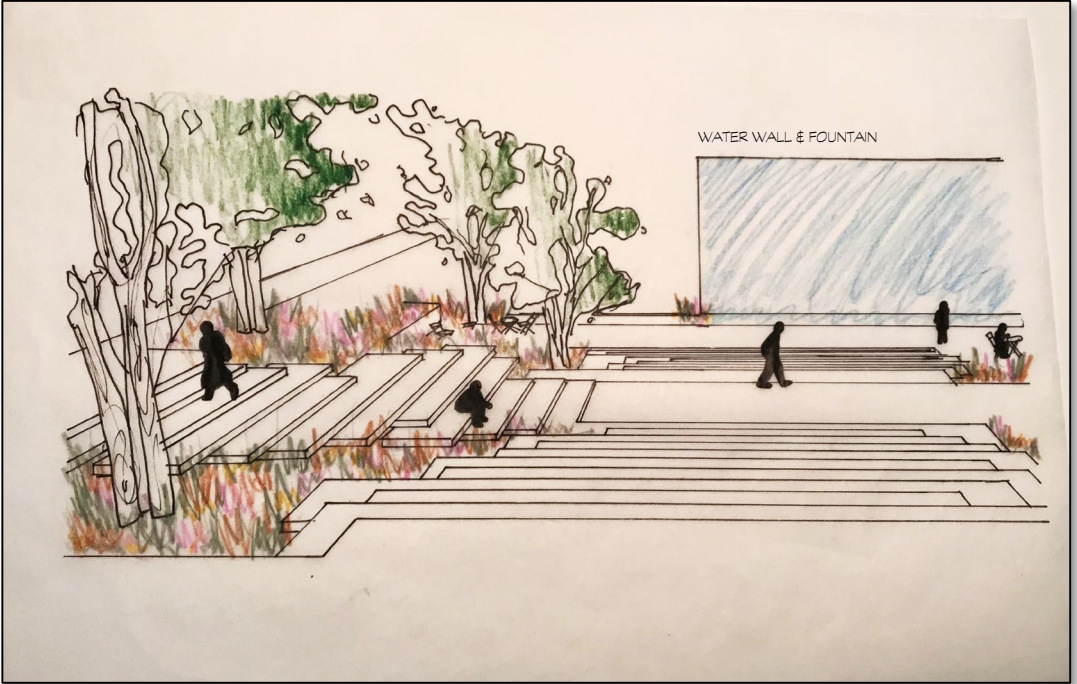
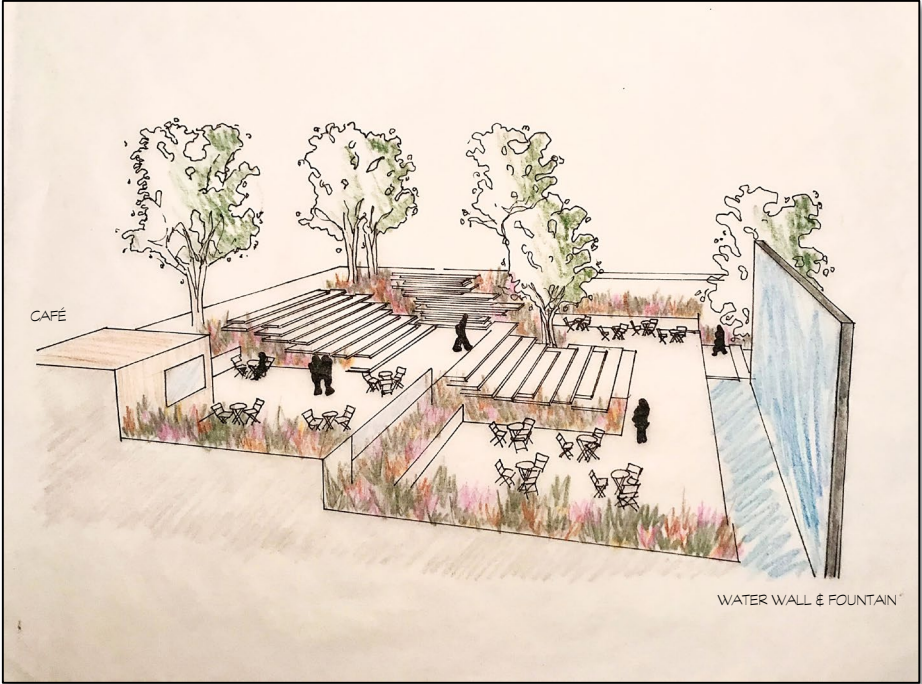


Rotated 180°



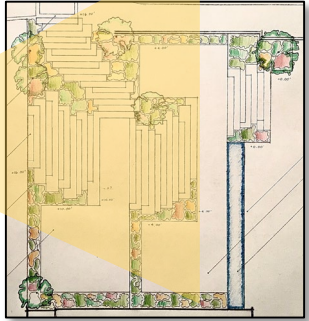


# PERSPECTIVE SKETCHES



● Viewpoint

Viewpoint ●





THANK YOU  
JIM & STEVE!!

---