

THOUSAND OAKS CIVIC ARTS PLAZA



Herbert Alexander Castro
Spring 2020
Landscape Design 3
Francisco Behr



OVERVIEW



The Civic Arts Plaza and City Hall are anchors within the downtown core of the city of Thousand Oaks. A masterplan process has been initiated due to a widespread recognition that the city of Thousand Oaks lacks an active and identifiable downtown—a destination for Thousand Oaks residents and visitors—a place where residents can meet, shop and engage in civic entertainment activities in a public setting.

This design proposal, therefore, aims at articulating a vision for creation of an enhanced Civic Arts Plaza and City Hall while considering community input from the community outreach summary accessible in the city's downtown core master plan. With the Civic Arts Plaza and City Hall as the city's base, an underlying fabric serves as its foundation in the form of multi-use landscapes. As a way to connect community and visitors, vignette experiences have been created, complimenting and at times contrasting the surrounding urban context. The landscape is sculpted into the site's topography and aims to create a timeless transition through spaces with layering of color, and the choreography of movement.

Through building a relationship with the landscape; perception and deeper respect for the environment from the community will branch off through urban context forging a synergistic renewal and stronger downtown city core.





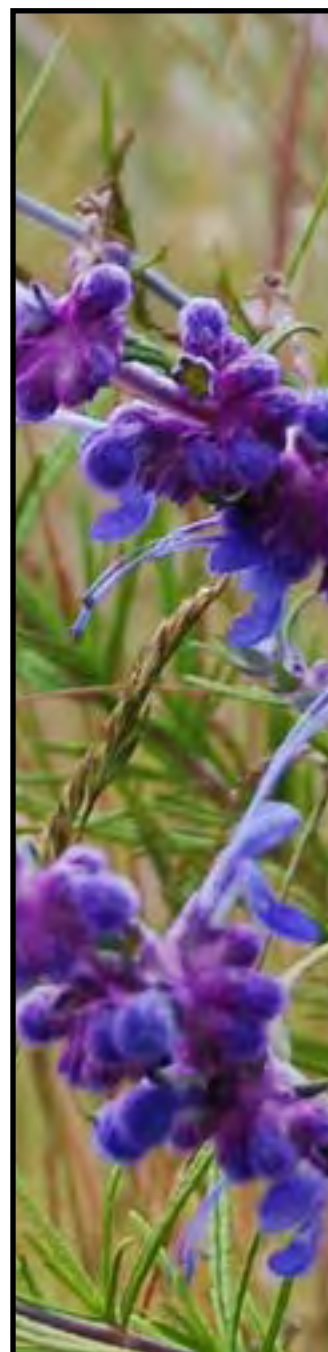
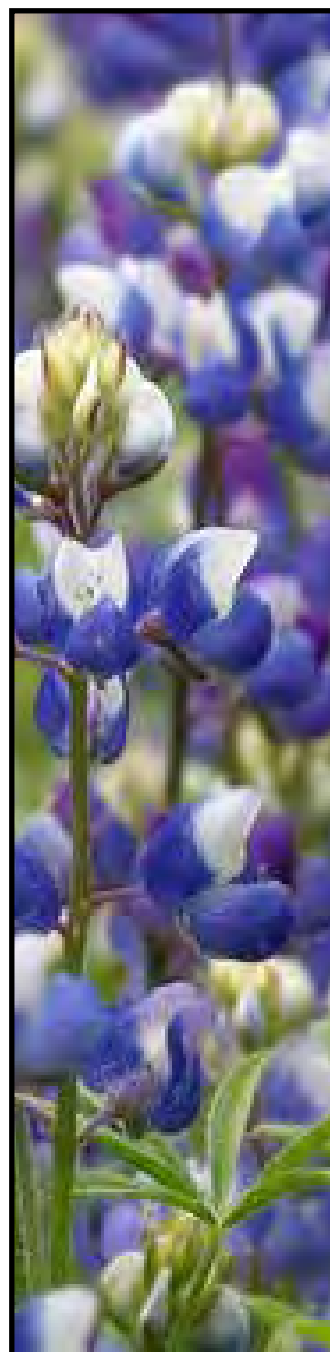
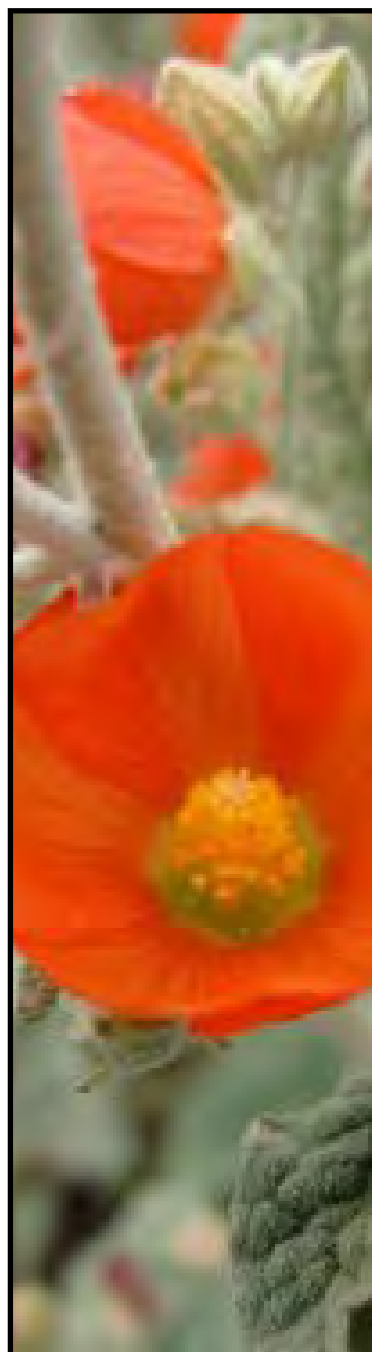
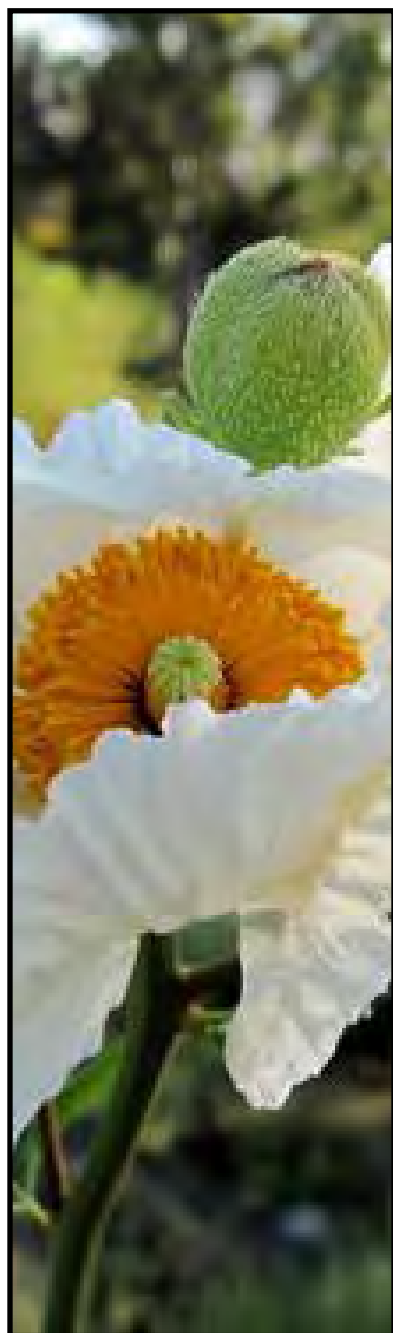
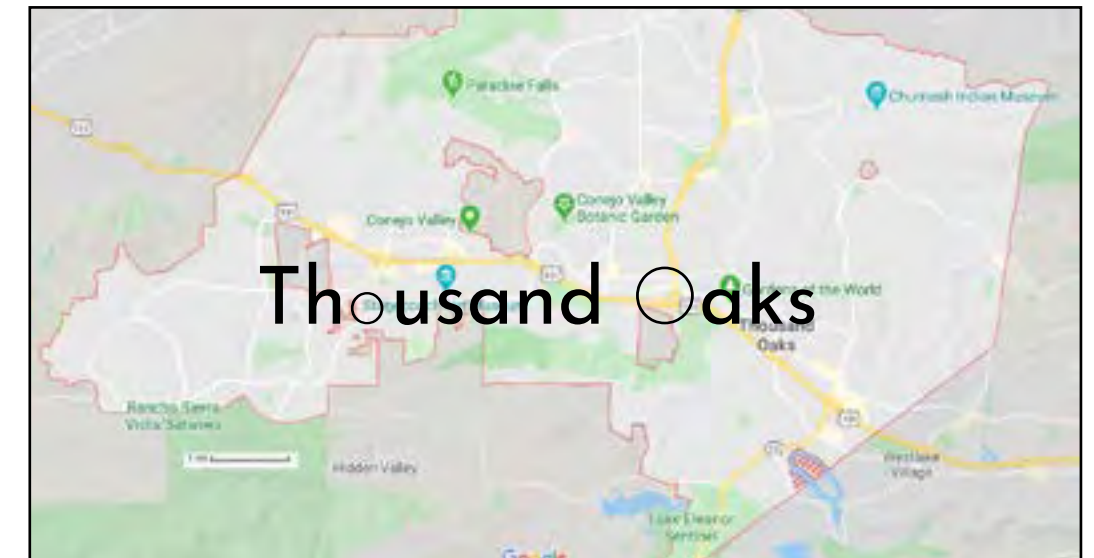
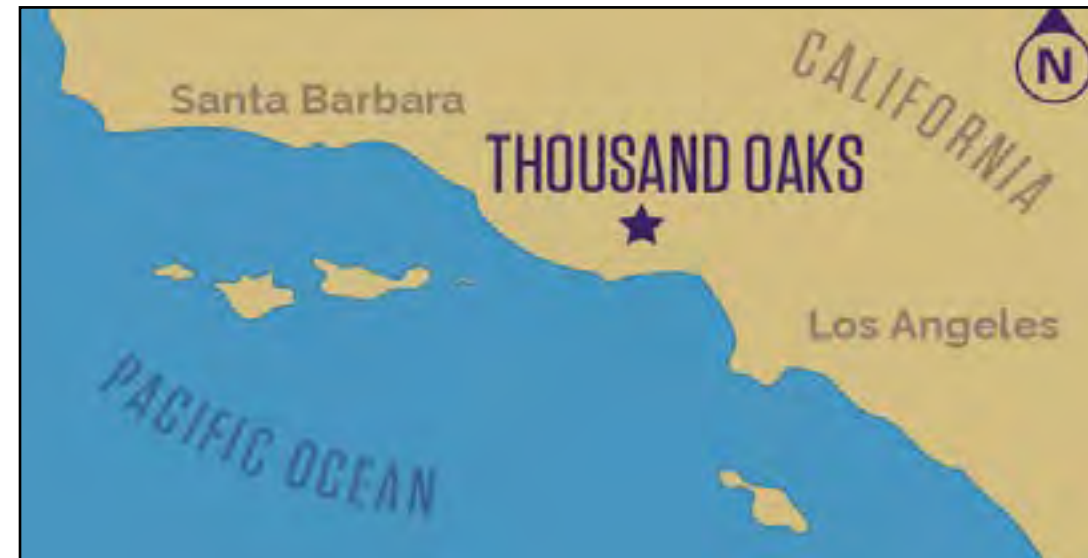


TABLE OF CONTENTS



LOCATION MAPS	8
EXISTING SITE AND USES	9
CONTEXT	10
SITE ANALYSIS:	
ACCESS POINTS	11
FIGURE GROUND	12
PEDESTRIAN CIRCULATION	13
VEHICULAR CIRCULATION	14
TREES	15
SUN ACCESS	16
TOPOGRAPHY	17
GGN	18
CASE STUDY: LURIE PARK	20
CASE STUDY: CIVIC PARK AT HEMISFAIR	21
SITE CONSTRAINTS	22
DESIGN GOALS	23
OPPORTUNITIES	24
INSPIRATIONAL IMAGES	26
CIVIC ART	28
PLANT PALETTES	29
YELLOW	30
VIOLET	31
SAGE	32
DESIGN DIAGRAMS	34
ILLUSTRATIVE PLAN	35
WOOLY BLUES WALK	36
PATH TO SERENITY	38
SPACE WITHIN A SPACE	40
HERITAGE OAK CIRCLE	42
SUMMARY	43

LOCATION MAPS



Thousand Oaks is the second largest city in Ventura County, California. It is in the northwestern part of Greater Los Angeles, approximately 40 miles from Downtown Los Angeles. It is named after the many Oak Trees present in the area. The Civic Arts Plaza is a performance arts center and City Hall for the city of Thousand Oaks. It is located on Thousand Oaks Blvd just off Ventury Hwy 101 and S. Conejo Valley School Road.



EXISTING SITE AND USES

1.



2.



3.



- City Hall
- Performance Arts Center
- Mary and Richard Carpenter Park
- Parking Lot

- 1. City Hall
- 2. Performance Arts Center
- 3. Mary and Richard Carpenter Park
- 4. Parking Lot

4.



There are 4 different uses on the site. The main use on site is city hall and is accessed from the northwestern parking lot along Dallas Drive. The secondary use is of the performing arts theater. Passive use on the site occurs in the Mary and Richard Carpenter Park which is used as a transitional space from the surrounding context to the Civic Arts Plaza.

CONTEXT



Thousand Oaks Neighborhood



The Lakes at Thousand Oaks (commercial)



Gardens of the World (parkspace)



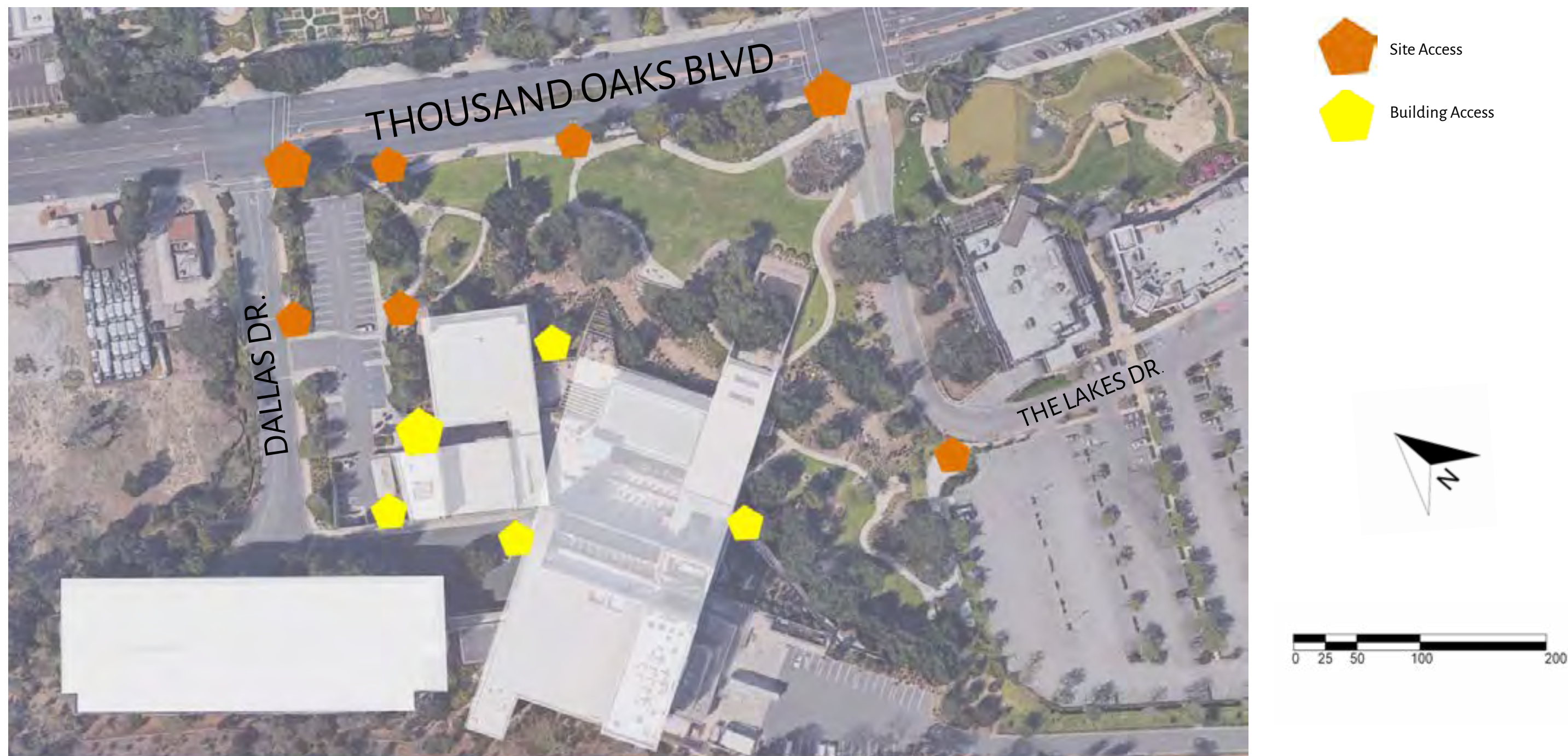
- Commercial
- Public
- Gardens of the World
- Proposed Development
- Elderly Residential
- SFH Residential



Proposed Development

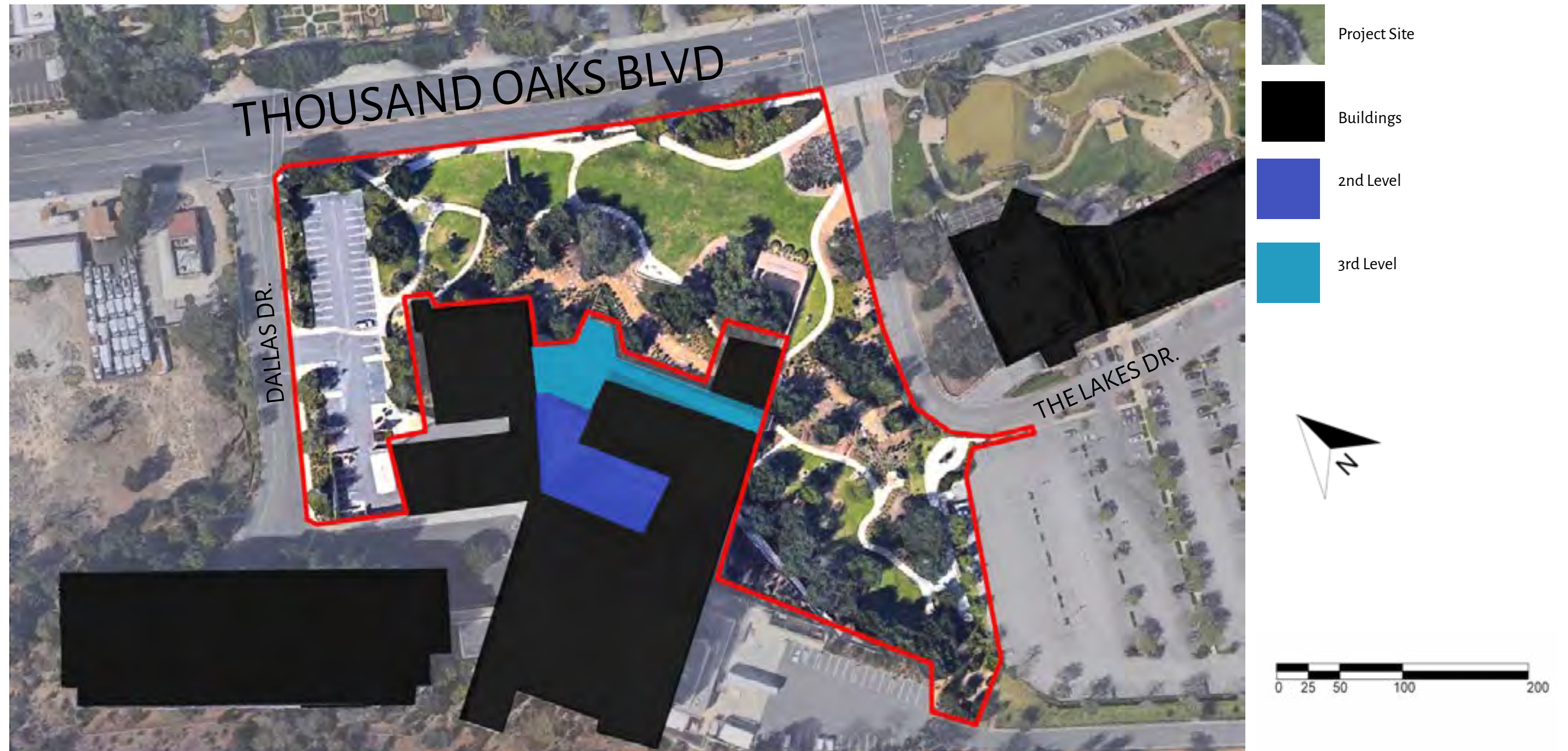
The Thousand Oaks Civic Plaza is situated between Thousand Oaks Blvd and the 110 Fwy, just west of S. Conejo School Rd. Within the vicinity of the Thousand Oaks Civic Plaza are commercial property, public parks, and residential neighborhoods; Gardens of the world is directly across from the site.

SITE ANALYSIS: ACCESS POINTS



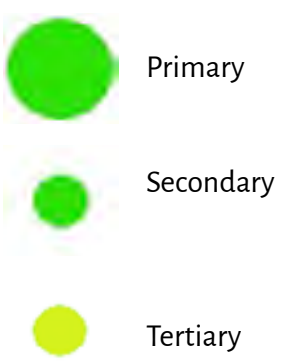
Primary access to the site is possible by way of the crosswalks linking the north side of Thousand Oaks Blvd and the site east side access to the site is by way of the crosswalk that links the site to The Lakes shopping center. Improvements are needed in regards to building access. Primary access to the building is limited and poorly accessible for the amount of traffic received. A proposed solution is to design a multi level stair case on the northern face of the building where currently multi tier planters are situated.

SITE ANALYSIS: FIGURE GROUND



Within the red border is the space separated from the built environment of the building on site. What lies within this space is available fabric for hard scape and soft scape design with a landscape architecture intended approach.

SITE ANALYSIS: EXISTING PEDESTRIAN CIRCULATION



Currently, primary pedestrian circulation is from the parking structure to the main entrance into city hall and theaters. The paths around the site have an equal amount of use, it all depends on the purpose of the visit. Most of the pedestrian use on secondary paths comes off as passive. Highlighted in yellow are the crosswalks that connect the site to neighboring context.

SITE ANALYSIS: EXISTING VEHICULAR CIRCULATION



Primary vehicular circulation along Thousand Oaks Blvd provides access to the site via Dallas Drive. Once on Dallas Drive, visitors have three options; access to the small parking lot, the parking structure or to make use of the roundabout. Within the small parking lot is access to the delivery drop off. The proposed design will plan around this use. The Lakes Drive provides access to shopping center, The Lakes at Thousand Oaks. A third parking lot behind the performance art theaters is accessible from here.

SITE ANALYSIS: TREES



Heritage Oaks are found throughout the site. Efforts will be made to keep all but one oak. A proposed planting of crepe myrtles will be in place to open up space and frame the direction of intended pedestrian traffic on the way to buildings new alternative entry and staircase. The Palo Verde trees are also used as a way to frame and direct movement through the site. They are intended to harmonize and compliment the orchestrated circulation currently in place.

SITE ANALYSIS: SUN ACCESS AM/PM



Spaces exposed to sunlight in the AM hours are shown in Yellow.



Spaces exposed to sunlight in the PM hours are shown in Yellow.

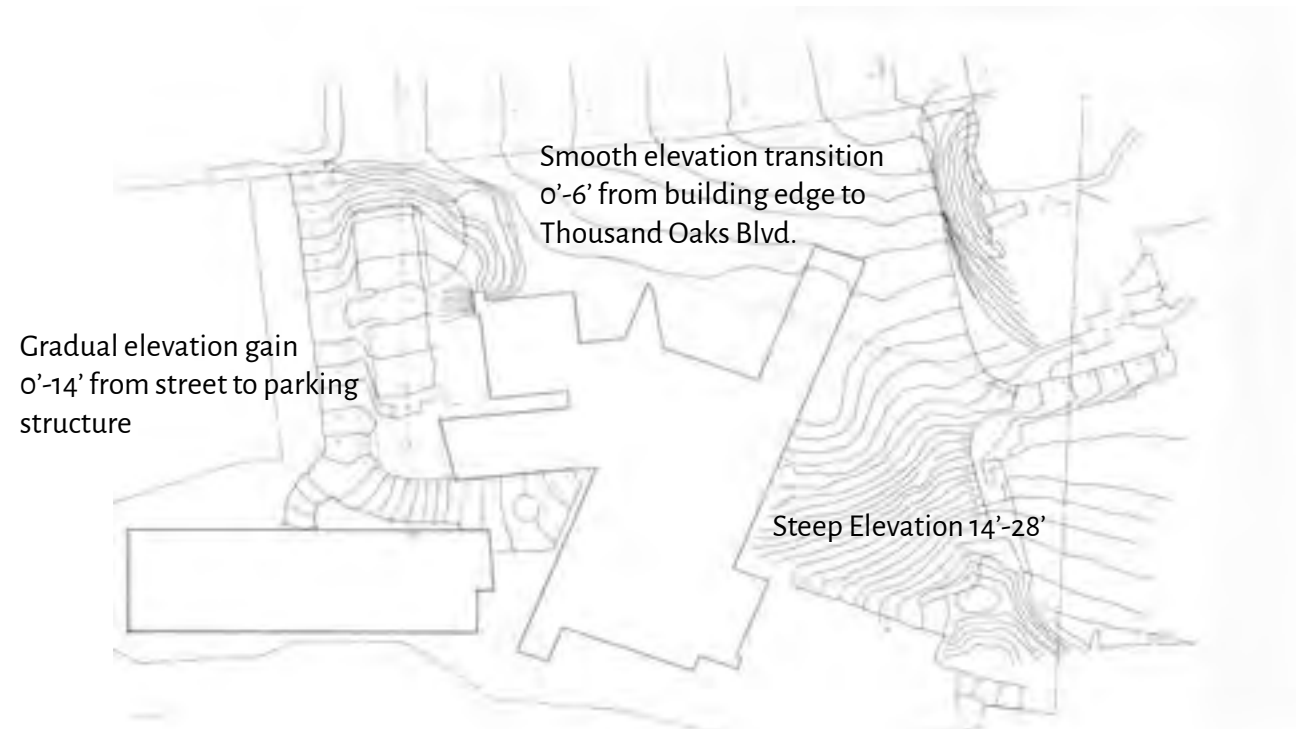


Thousand Oaks City Hall in the morning hours.



Thousand Oaks Civic Center at night.

SITE ANALYSIS: TOPOGRAPHY



The above image shows moderate elevation gain where change in topography is moderate. In these areas the impact from modifying terrain will be minimal on the natural landscape. The modifications will be necessary to construct artificial lakes and accommodate for path intended to connect multiple programs.



The above image in color shows moderate elevation gain where most of the programming for the site will be designed.

GUSTAFSON GUTHRIE NICHOL INSPIRATIONAL IMAGES



The Lurie Garden at Millennium Park



Bill and Melinda Gates Foundation Campus



Brown University School of Applied Math



Miramar Hotel and Residences Development



Bainbridge Island Residence



Civic Park at Hemsfair



Lurie Garden, Light and Dark divided by seam.



Civic Park at Hemsfair



Civic Park at Hemsfair, Aerial Sketch

CGN landscape architecture is an example of unique design and its ability to be successful if it allows surrounding urban context and natural conditions of a site to drive the design process. Lurie Garden is both bold and unique in its approach to using natural occurring elements and mixing in creative excitement into the landscape. CGN's style design will be used as a response of excitement to contrast with the building on the site.

Civic Park at Hemsfair is used as a way to frame into place a public plaza, courtyards, promenade fountains and gardens. These elements extend and connect into different programs on the site. Visitors to the site will take this experiences and influence design by desire out into the urban context.

CASE STUDY: LURIE GARDEN



1. Illustrative Palette
2. Flowy Plant material
3. A seam; pathway directing flow of pedestrian traffic
4. Pocket sized experiences on foot trails

Location : Chicago,IL
Size: 3.3 Acres
Completion: 2004
Project Team :GCN

CIVIC PARK AT HEMSFAIR



- 1. Located within a downtown core amongst a vibrant growing neighborhood
- 2. Use of layers to create points of discovery
- 3. Promenade that connects spaces within and beyond park
- 4. References regional and geographical locations

Location: San Antonio, TX
Size: 16 Acres
Completion: 2021
Project Team: CGN

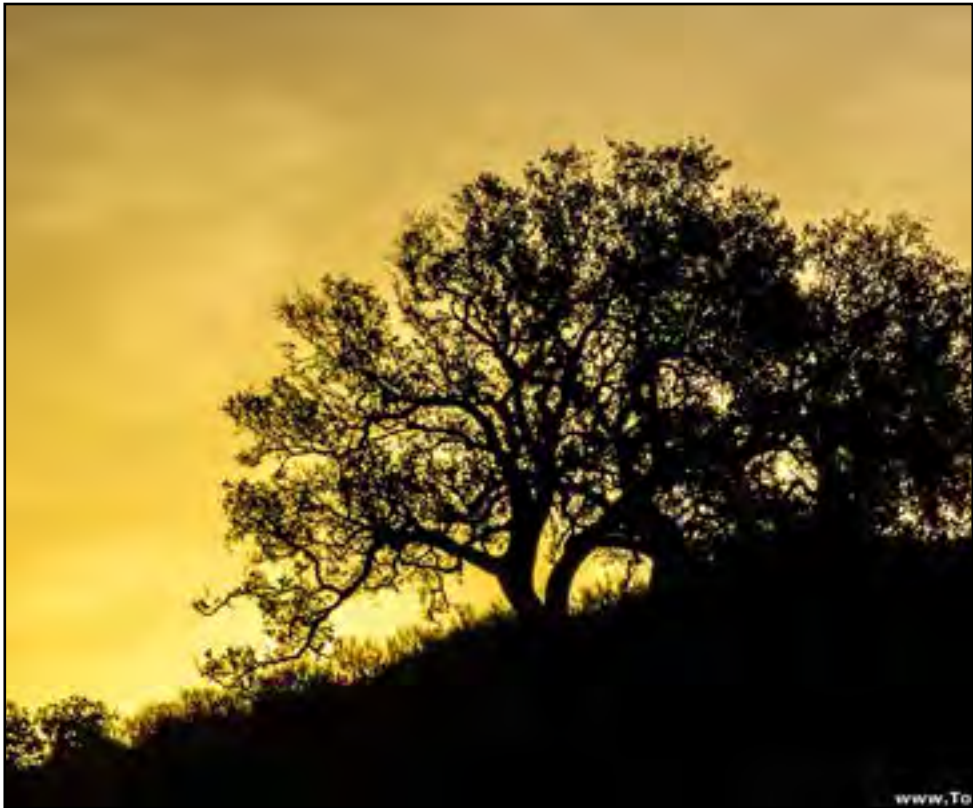
SITE CONSTRAINTS



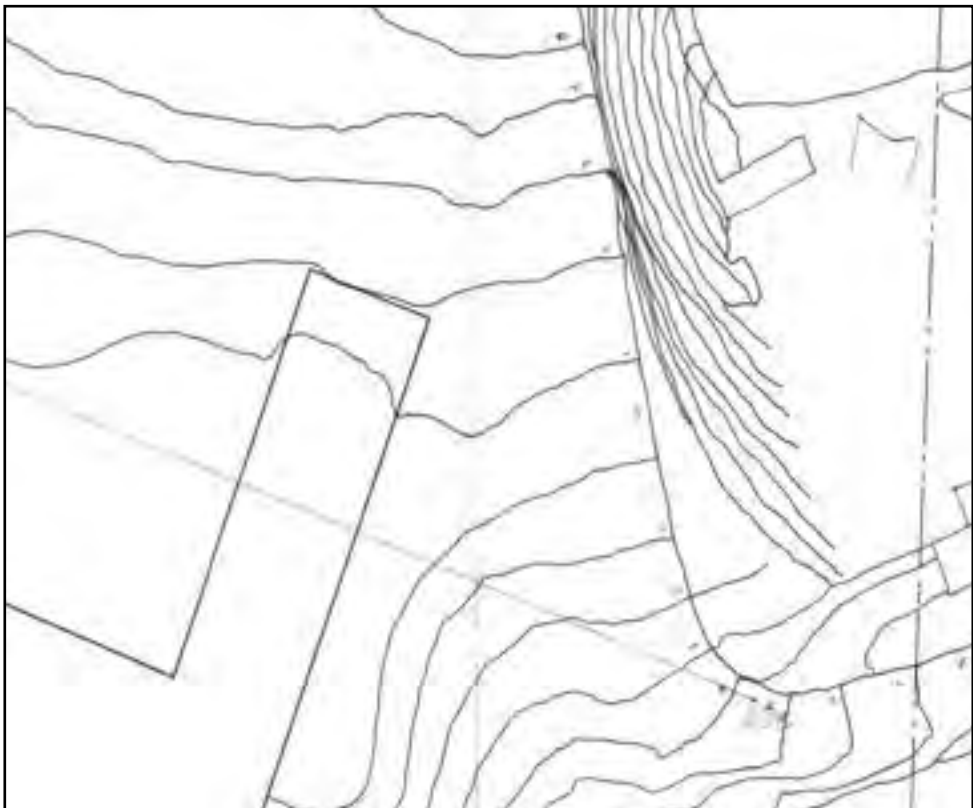
Community views on development



The building design; windows.



Preserving historic native oaks



Developing a design that requires least amount of change to topography.



Limited access to second story.



Flow of traffic on Thousand Oaks Blvd

DESIGN GOALS



Maintain and preserve historic oaks.



Stimulate local economic development.



Achieve both architectural and site design of highest quality.



Use the circular forms of oak to create a welcoming entryway



Use of water in design to mirror "Lakes" but contrast with design.



Invite multiple types of pedestrian use with a widened promenade.

OPPORTUNITIES



International Public Art. Soto Sphere by Jesus Soto



Terraced seating in place where changes in terrain are moderate.



Sculpture that mirrors the natural landscape to contrast with the blocked form of the building on site



There is opportunity to connect The Lakes shopping by way of an elevated bridge.



A staircase on the north side of the building allows for an alternative entrance to the Civic Artz Plaza.



Heritage trees can be featured and used as focal points for design.







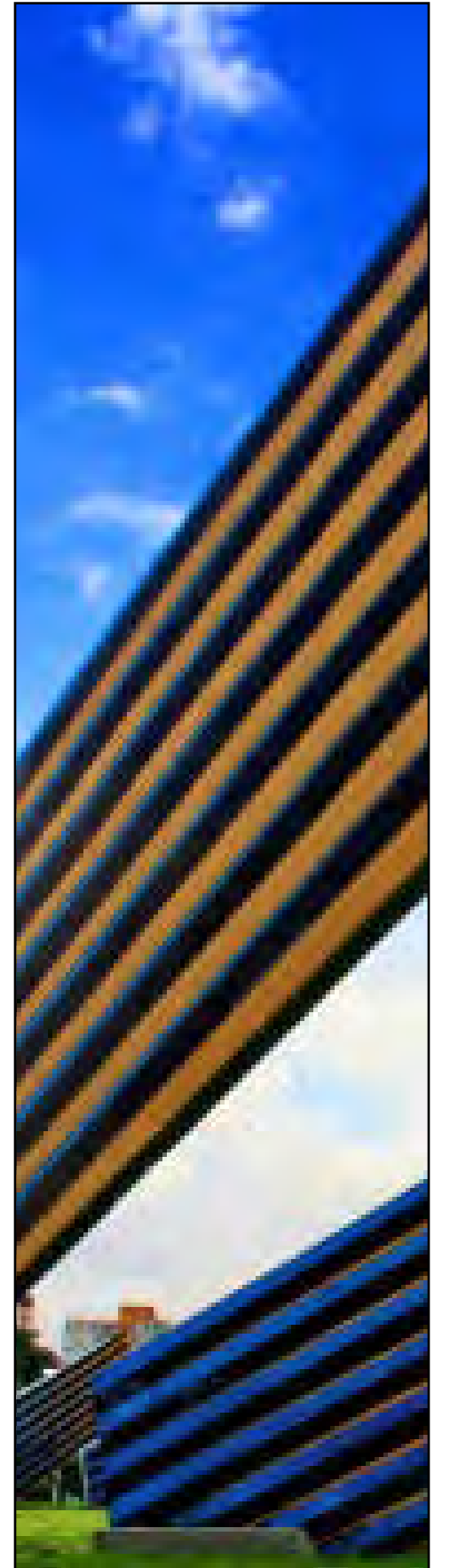
CIVIC ART: JESUS SOTO AND CARLOS CRUZ DIEZ



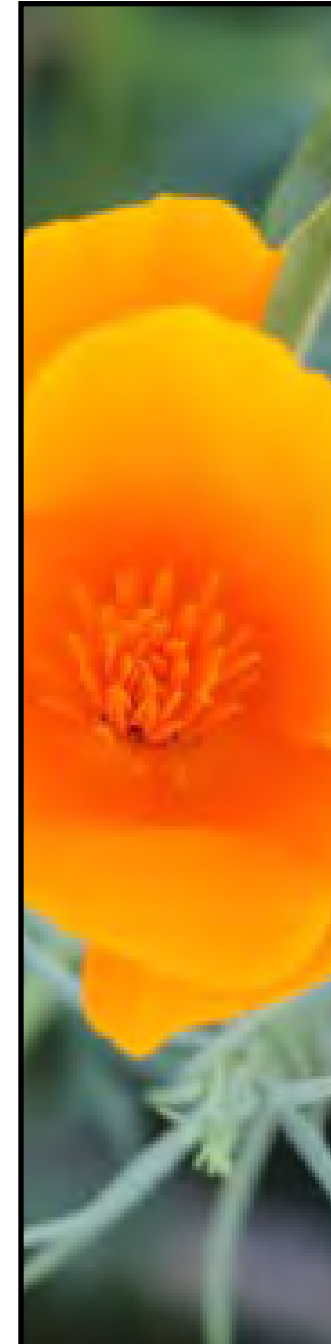
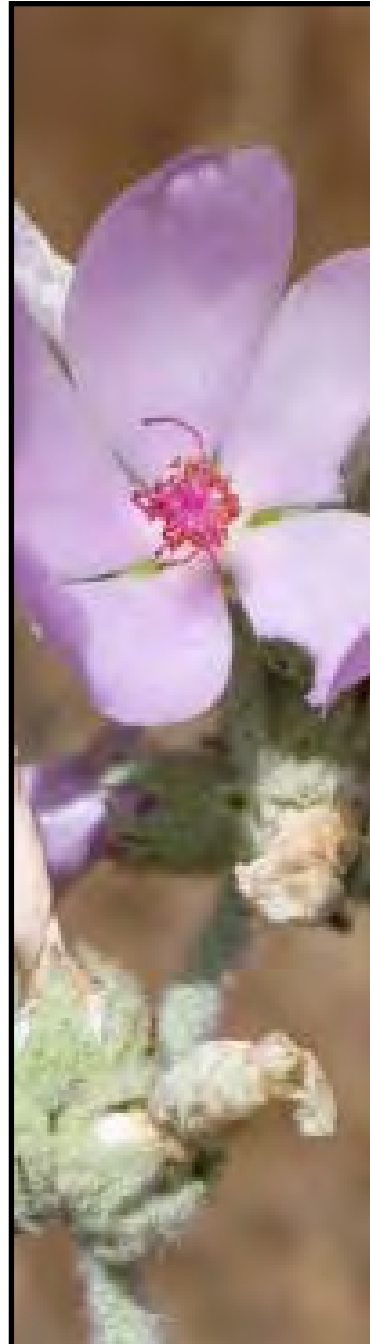
Jesús Rafael Soto (June 5, 1923 – January 17, 2005) was a Venezuelan op and kinetic artist, a sculptor and a painter. His sculpture would be a contrast to the building on site in that the sculpture would bring movement and visually represent the dematerialization of form. It will compliment the orchestration of movement being attempted with the layering of plant material selected.



Carlos Cruz-Diez (17 August 1923 - 27 July 2019)[1] was a Venezuelan artist. His pastel color painted sidewalks can be a permanent installation that connects the surrounding urban context to the project site.



PLANT PALETTES



The motivation to use color is to immerse visitors into space by way of creating curiosity and stimulating visual engagement. Complimentary to selecting by color is plant selection by types of scents produced.

By layering, a calm breeze will subtly create plants to be provoked into a harmonized movement within an orchestrated environment experienced by sight, smell and if possible, touch. Creating more memorable interactions.

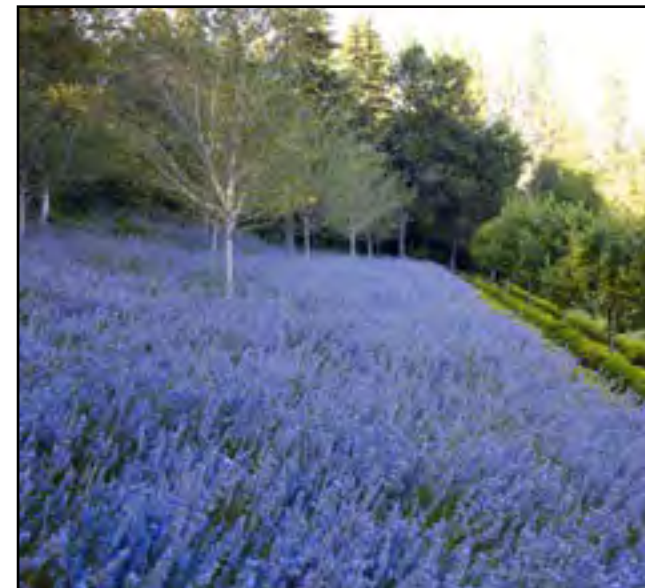
PLANT PALETTE: YELLOW



1. Blue Palo Verde
2. California Poppy
3. Matilija Poppy
4. Southern Maiden Fern

5. Native Grasses

PLANT PALETTE: VIOLET



1. Douglish Iris
2. Woolly Blue Curls
3. Miniature Lupine
4. Russian Blue Sage

PLANT PALETTE: SAGE



1. White Sage Flower
2. Humming Bird Sage
3. Black Sage
4. Chaparral Mallow



PROPOSED DESIGN DIAGRAMS



Bubble Diagram conveying types of programing within the site.



Combined diagram of program spaces and significant features.



This diagram shows the types of movement within the site and highlights the "Golden Walk" that connects the different spaces.



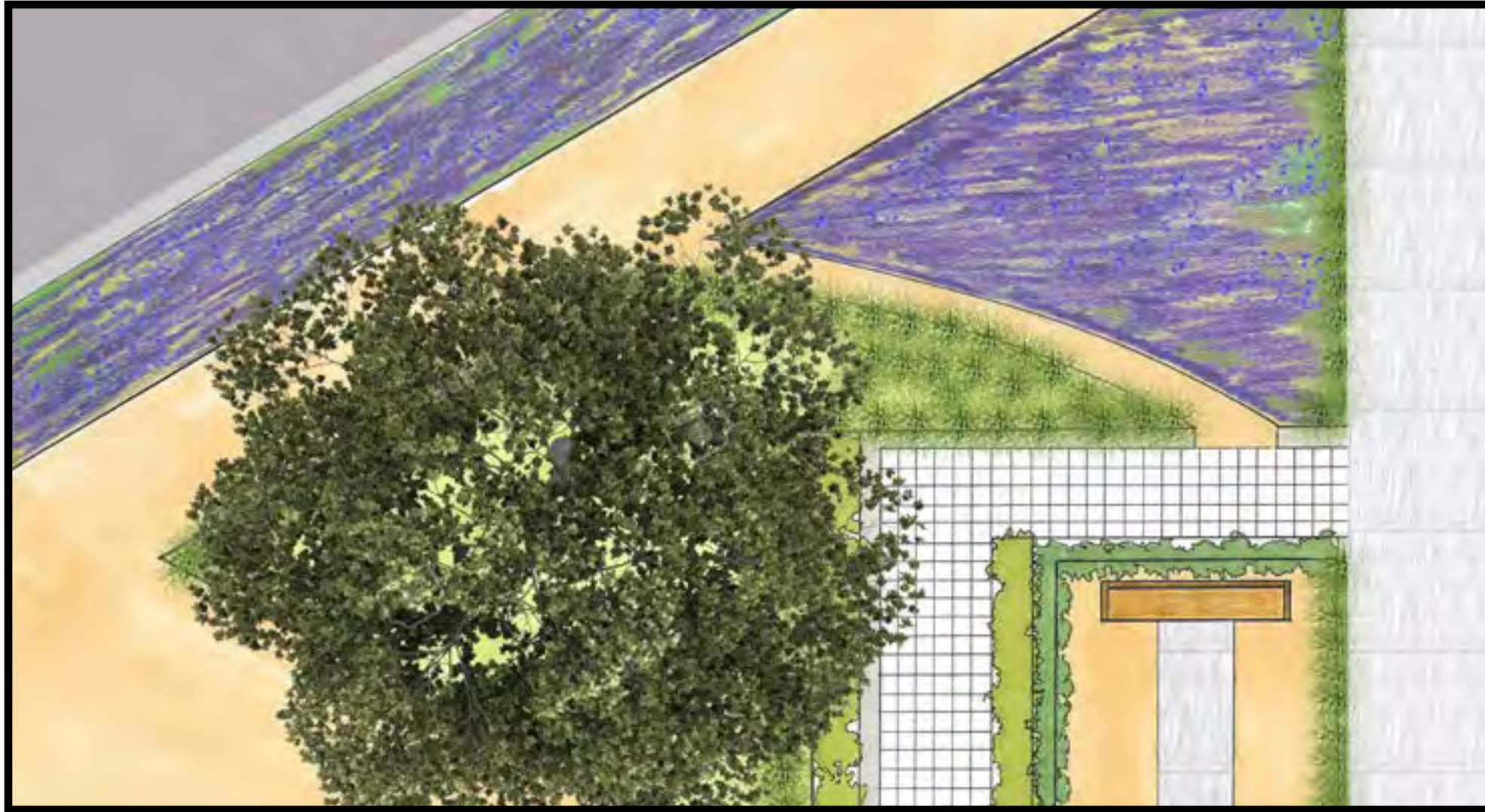
Highlighted in color are the significant sights and featured elements connected by paths. The element of water plays a dual role. It is used as a guide and is also a destination point.

ILLUSTRATIVE SITE PLAN



WOOLY BLUES WALK

The Woolly Blues walk introduces visitors to collages of color and movement, it is the introduction to a path leading to pleasant aromas, kinetic art and a serene experience.



Heritage Oak

Woolly Blue Curls

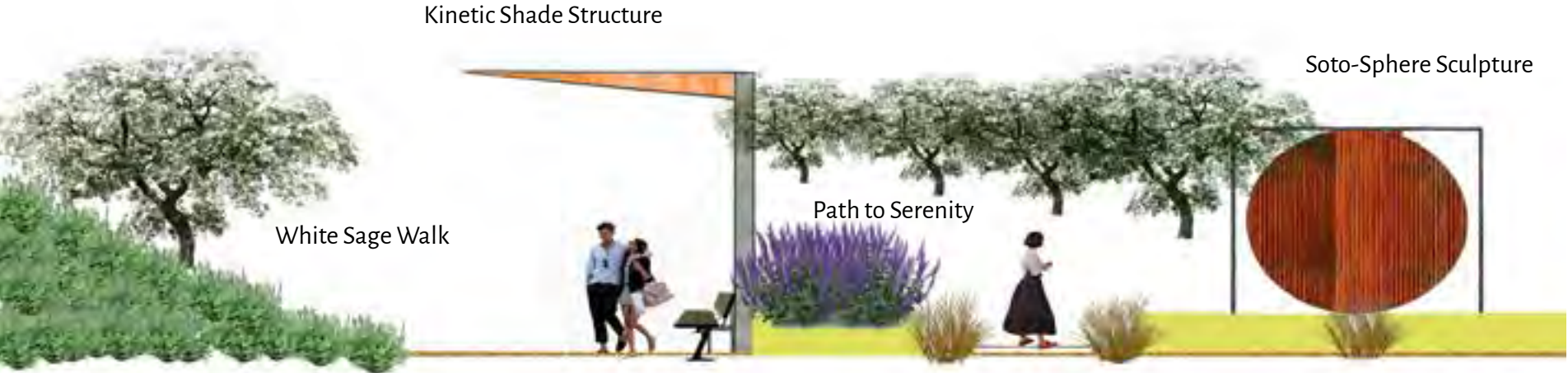
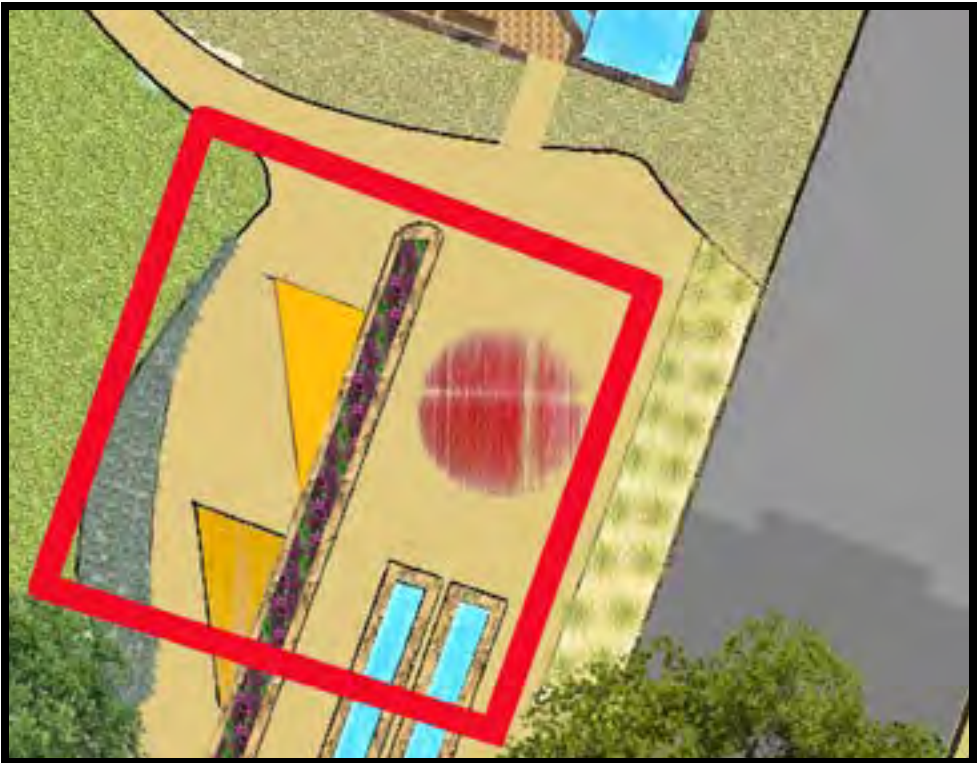
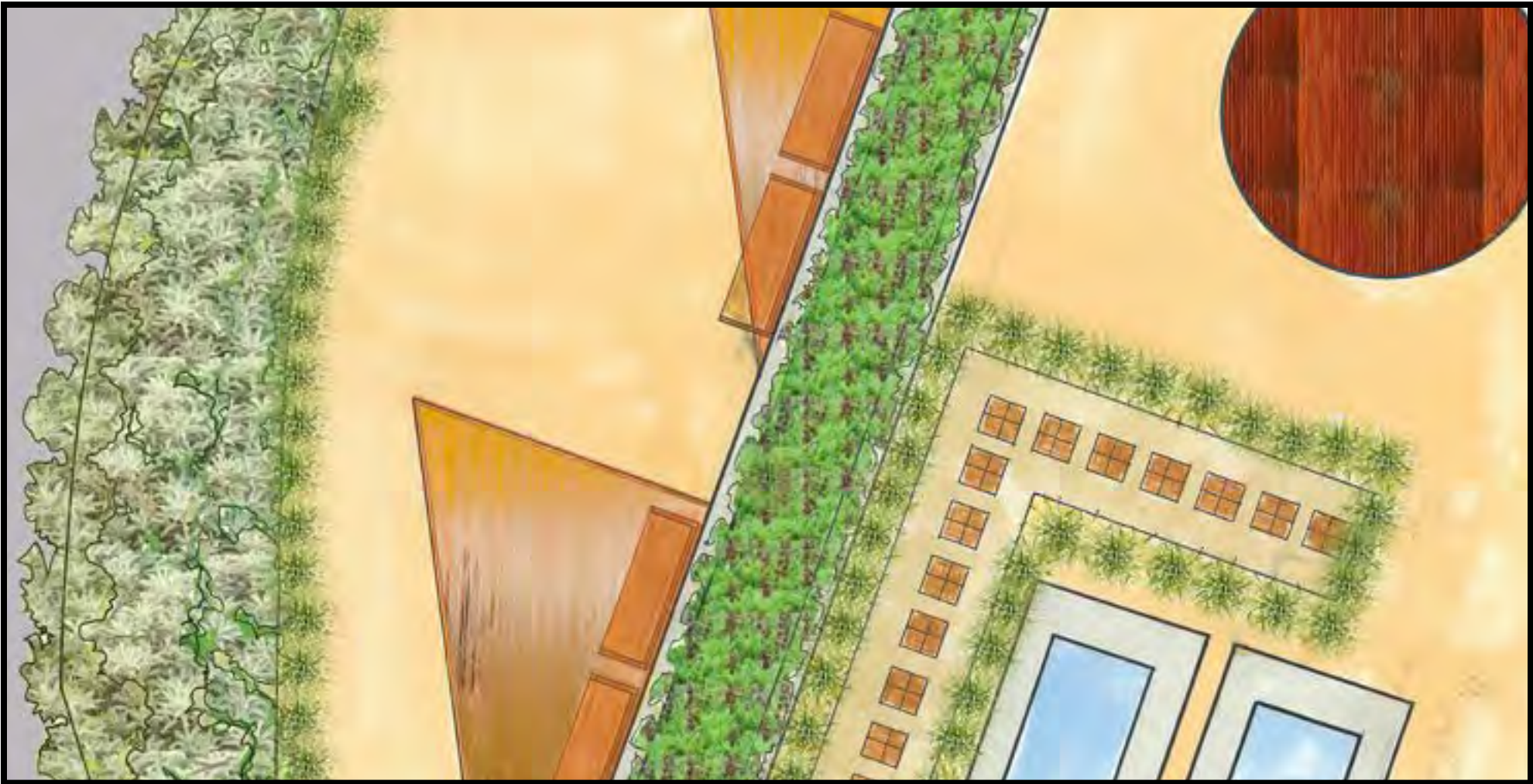
Native Grasses

Bench



PATH TO SERENITY

The Path to Serenity passes by kinetic art, rows of hummingbird sage and swaying native grasses. This progression of experiences prepares the visitor for tranquil, reflective moments under Heritage Oaks along a stretch of water.

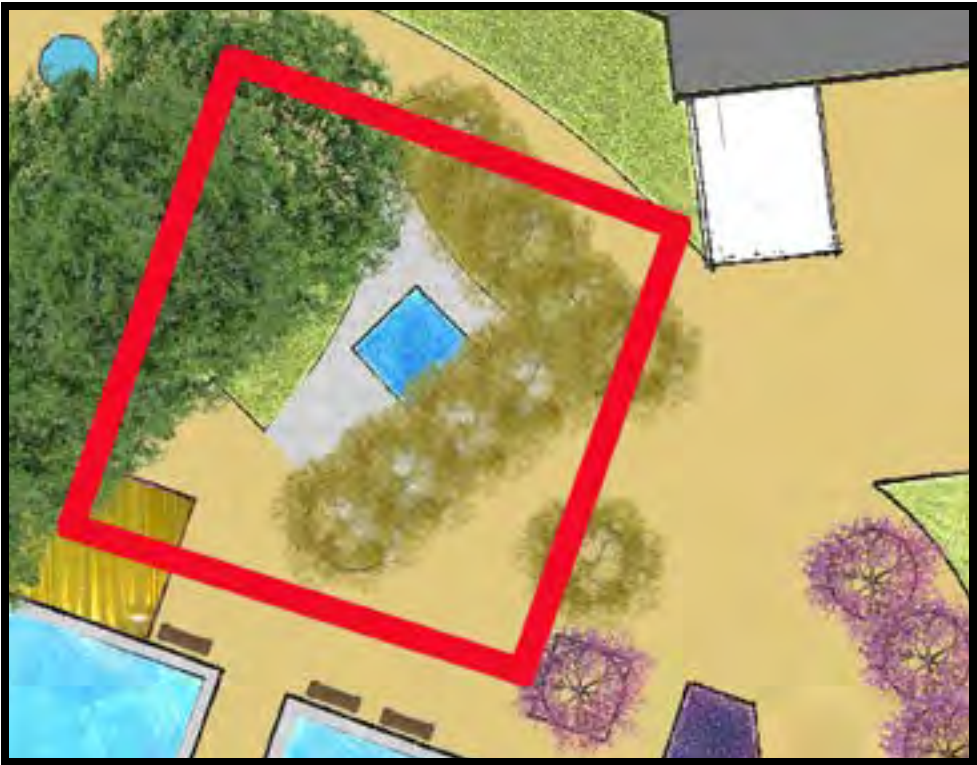
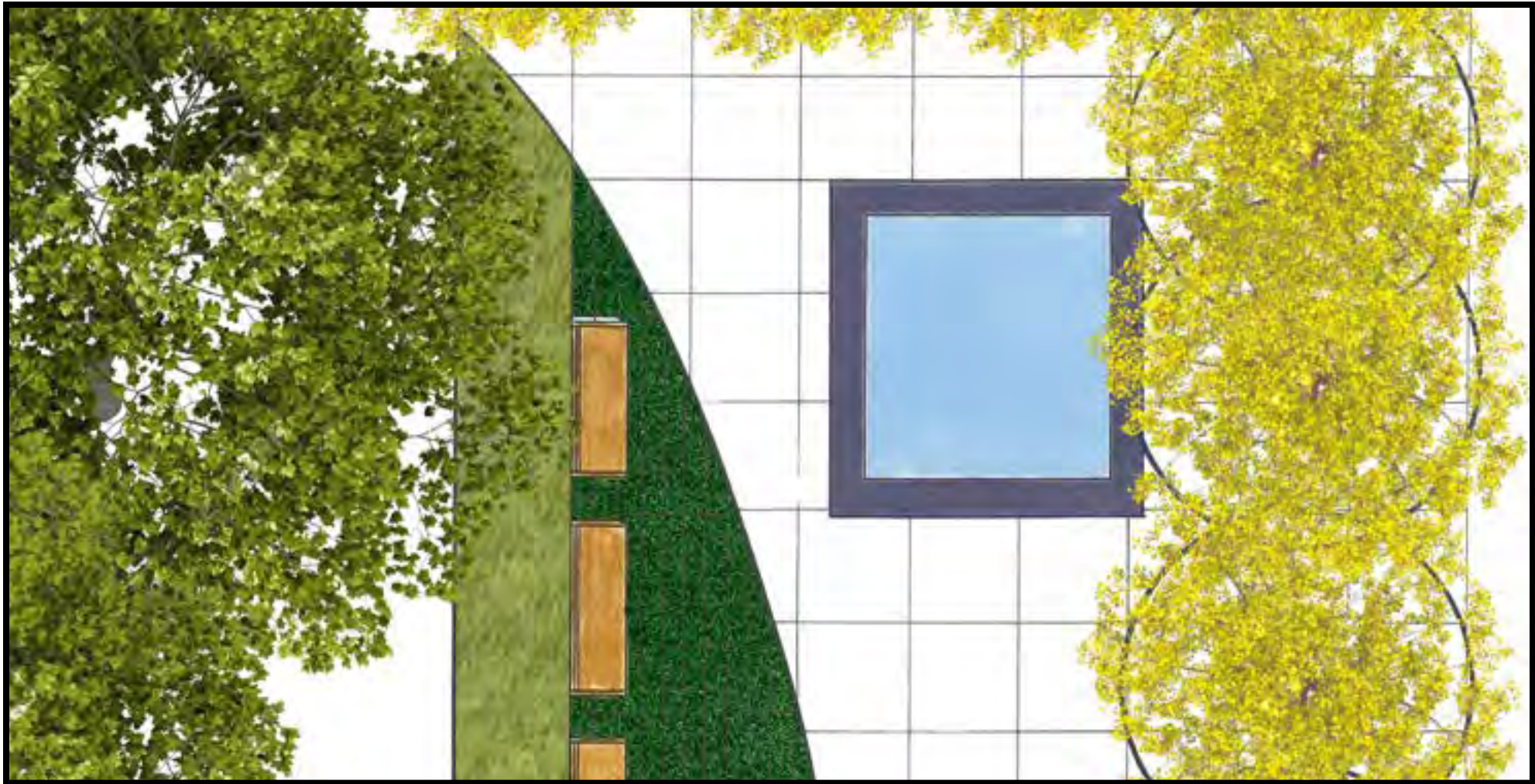


“An artist, he paints with lakes and wooded slopes, with lawns and banks and forest-covered hills.” — Daniel Burnham talking about Frederick Law Olmstead”

— Erik Larson, *The Devil in the White City*

SPACE WITHIN A SPACE

Space Within a Space aims to frame intimacy. It is a retreat within the plaza, intended to be a restrained civic experience with multiple views.





HERITAGE OAK CIRCLE



CLOSING SUMMARY

The result of the proposed landscape design is a representation of an attempt to express an enhanced vision of the Thousand Oaks Civic Arts Plaza and City Hall, with the purpose of establishing an anchor within the core of the city. The design was shaped around the native heritage oaks, along with efforts to have a minimal impact on the natural topography of the site. Appropriate California native plants were considered; primarily ones that have a captivating color presence. With plant material as the medium; movement, scent and color are arranged with the intent to harmonize and produce memorial experiences for visitors.

Water is the guide to destination points such as the Soto-Sphere kinetic sculpture, an intimate plaza just past the Twin Mirror lakes, and the Collage Gardens along the Golden Walk. The underlying geometry demonstrates a strong connection of pathways. The most significant being the Golden Walk that connects multiple experiences to the Heritage Oak Circle Path; intended to reprocess the synergistic energy of visitors and the site. Ultimately building a space with strong connections at the heart of the city.

I would like to end with thanks to Professor Francisco Behr for his support and guidance in teaching advanced landscape design and his enriching critiques. I would also like to thank the professors that have guided me through the programs thus far, and finally my cohort, for being true in their approach and in the process challenging me to produce my best.