

GROUP MEMBERS: Michelle Tiet, Janet Teller, Scott Shoemaker, Cristina Arredondo



REIMAGINING THE SILVER LAKE RESERVOIR

WINTER 2020

LANDSCAPE DESIGN 4: ENVIRONMENTAL ANALYSIS AND PLANNING

MATTHEW SHIMER

TABLE OF CONTENTS

- Introduction and Summary of Analysis..... 1
- Concept Diagrams..... 2-4
- Master Plan..... 5
- Area 1: Habitat — Floating Islands , and Community Garden
 - Justification..... 6
 - Enlargement..... 7
 - Inspiration Images..... 8
 - Sustainability..... 9
 - Section & Perspective..... 10
- Area 2: Passive Recreation — Amipheatre and Hiking Hill
 - Justification..... 11
 - Enlargement..... 12
 - Inspiration Images..... 13
 - Sustainability..... 14
 - Section & Perspective..... 15

- Area 3: Passive Recreation — Promenade, Cafe, and Island
 - Justification..... 16
 - Enlargement..... 17
 - Inspiration Images..... 18
 - Section & Perspective..... 19
- Area 4: Active Recreation — Expanded Sports and Parking
 - Justification..... 20
 - Enlargement..... 21
 - Inspiration Images..... 22
 - Section & Perspective..... 23
- Area 5: Habitat — Floating Islands and Picnic Area
 - Justification..... 24
 - Enlargement..... 25
 - Inspiration Images..... 26

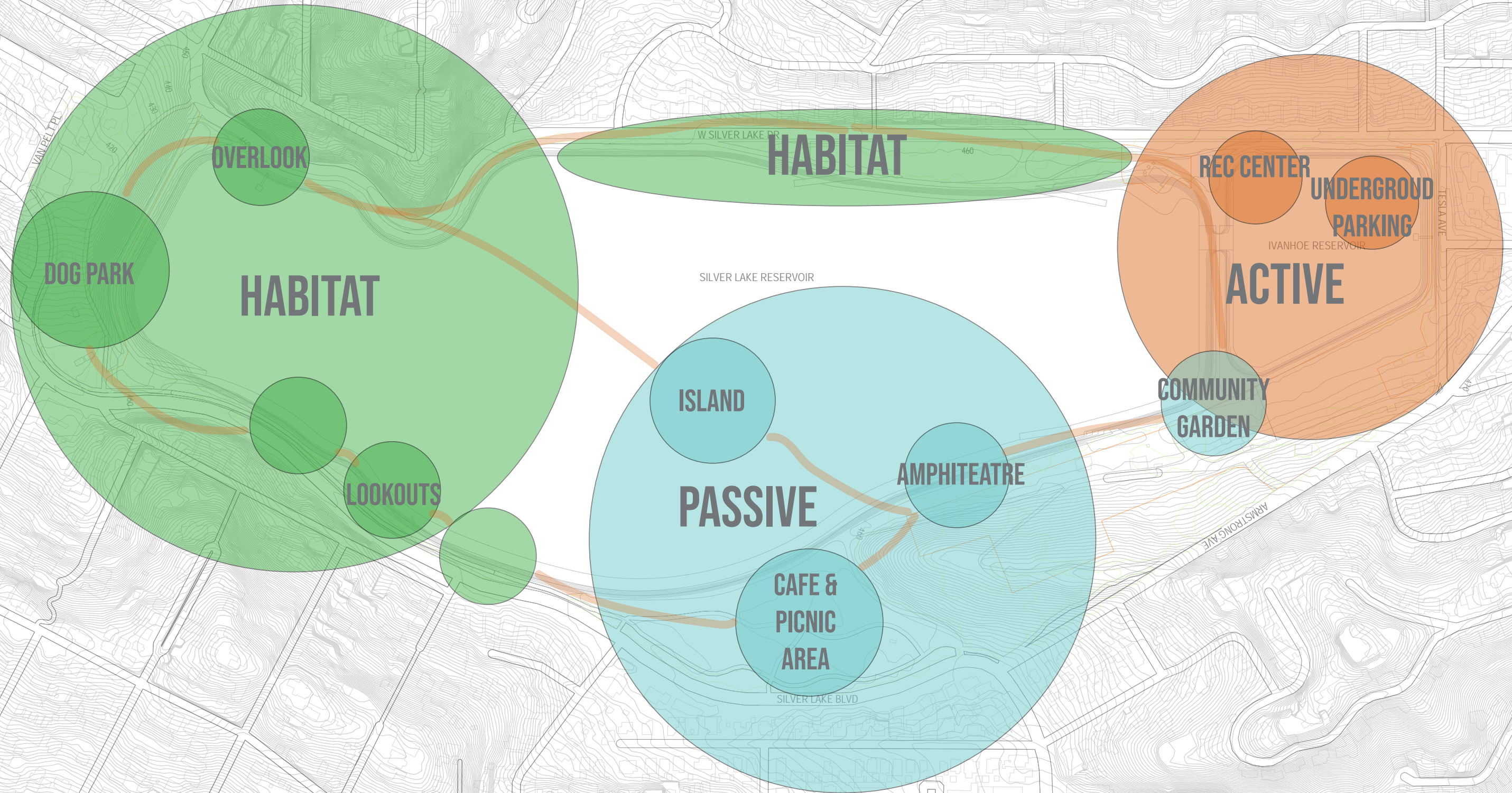
The Silver Lake Reservoir, Silver Lake's most notable and noticeable feature, is on the precipice of a new era. Now that the reservoir no longer provides potable water to the City, there is not only a great opportunity, but a challenge, to create a space "for wildlife, for healthy enjoyment, and most importantly, a sustainable water future" (www.silverlakeforward.com).

After in-depth analysis, and taking into account the desires of the local community, we have developed these particular objectives for our design:

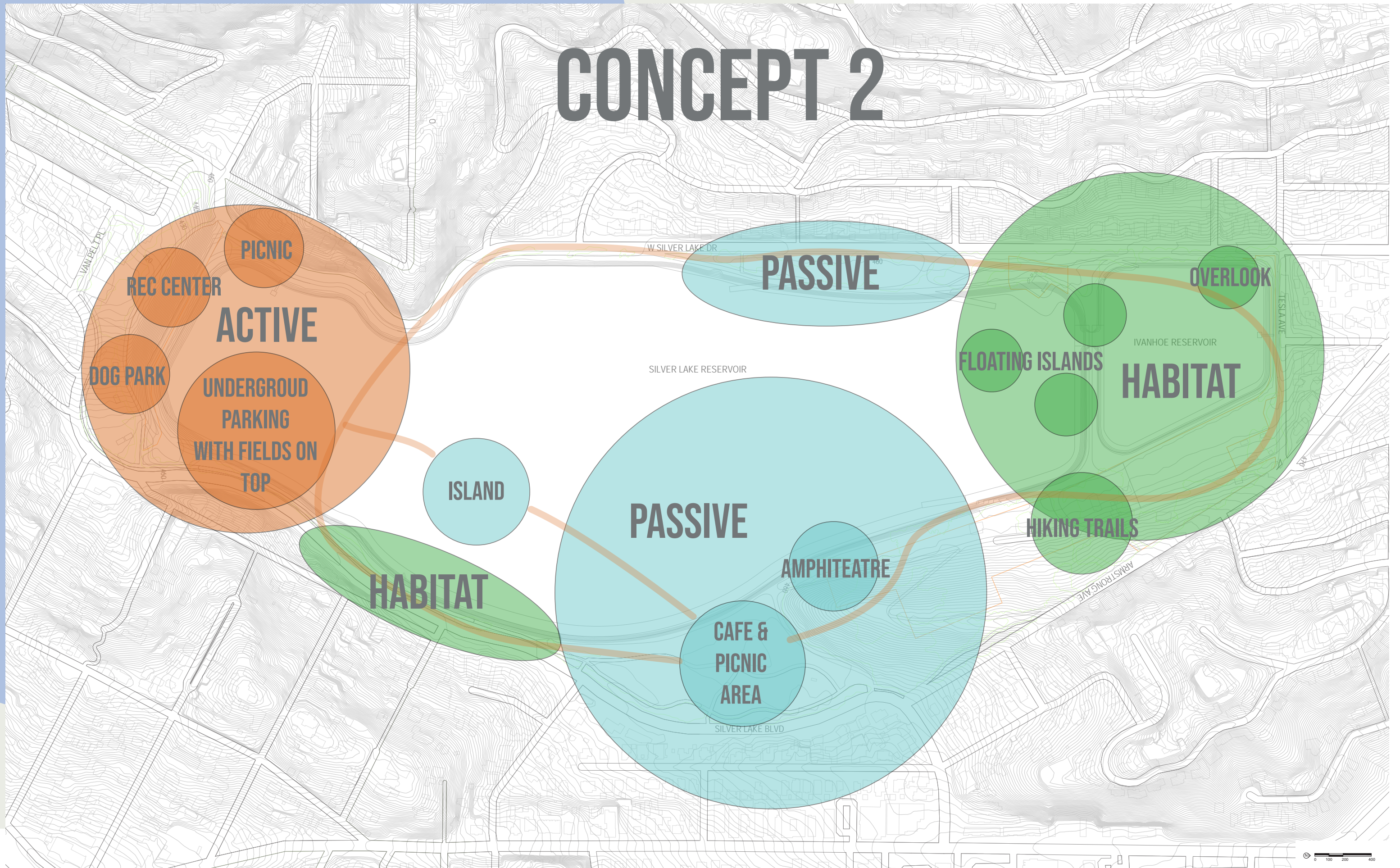
- Create a comprehensive vision that connects the neighborhoods and adds public space while offering safe and walkable people-friendly paths
- Include features that provide education and recreation for kids
- Expand passive and active recreation areas
- Enhance and expand wildlife habitat

Having been a community staple since it was first built in the early 1900's, the people of Silver Lake are very invested in what is to become of their cherished landmark. We hope that by following these objectives we will satisfy the needs of the local community, as well as meet the sustainability and health goals of the City of Los Angeles as a whole.

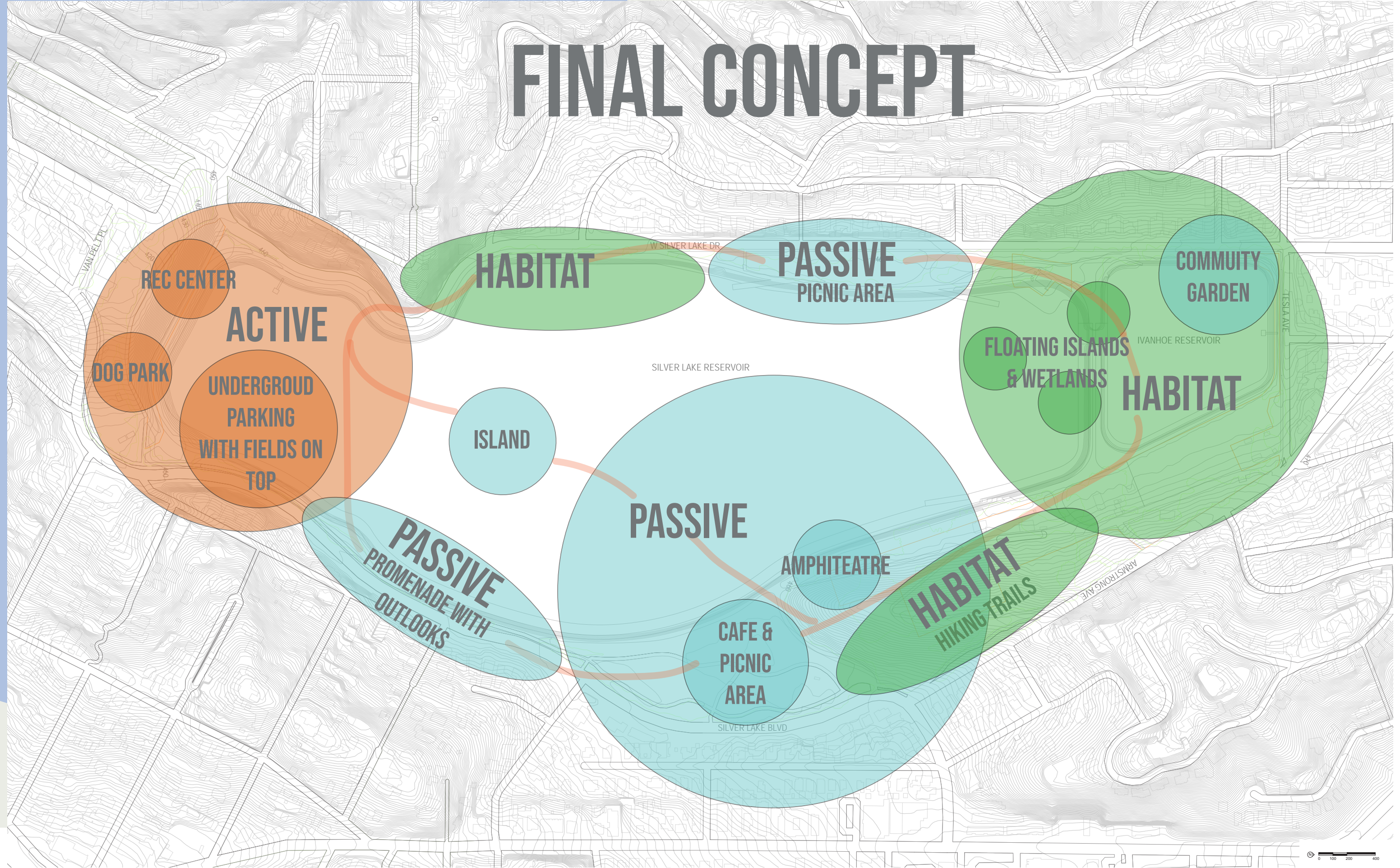
CONCEPT 1



CONCEPT 2



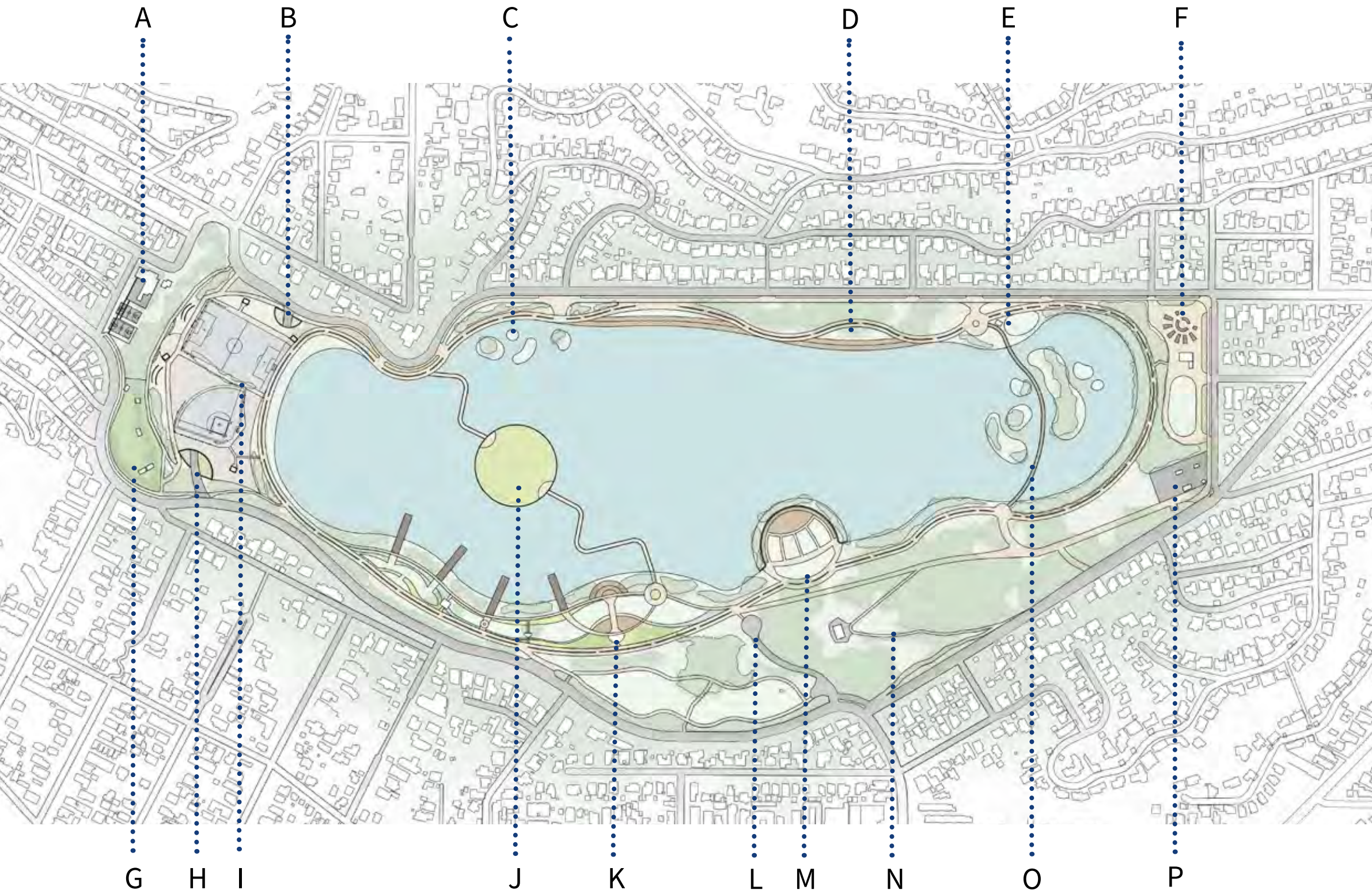
FINAL CONCEPT



REIMAGINING SILVER LAKE RESERVOIR

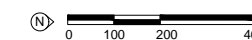
MASTER PLAN

SITE PLAN & PROGRAMS



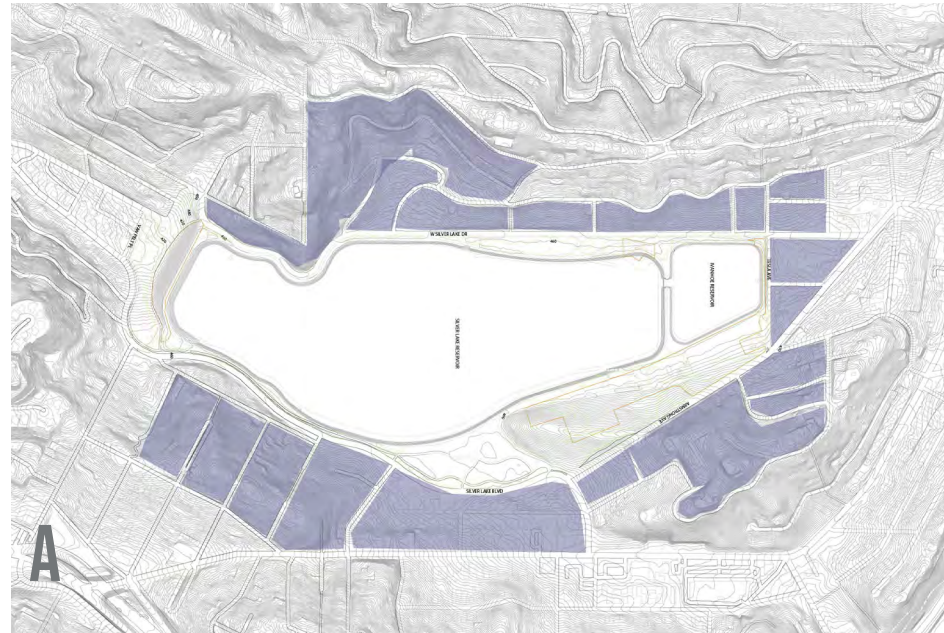
LEGEND

- A. RECREATION CENTER
- B. UNDERGROUND PARKING (WEST ENTRANCE)
- C. HABITAT ISLANDS
- D. LAWN AND SEATING AREA
- E. PICNIC AREA
- F. COMMUNITY GARDEN AND PARK
- G. REVITALIZED DOG PARK
- H. UNDERGROUND PARKING (EAST ENTRANCE)
- I. SPORT FIELDS
- J. ISLAND LOOKOUT
- K. CAFE / PROMENADE
- L. SERVICE DROP-OFF
- M. AMPHITHEATRE
- N. HIKING TRAILS TO EDUCATION CENTER
- O. BRIDGE ACROSS HABITAT ISLANDS
- P. EXISTING SCHOOL

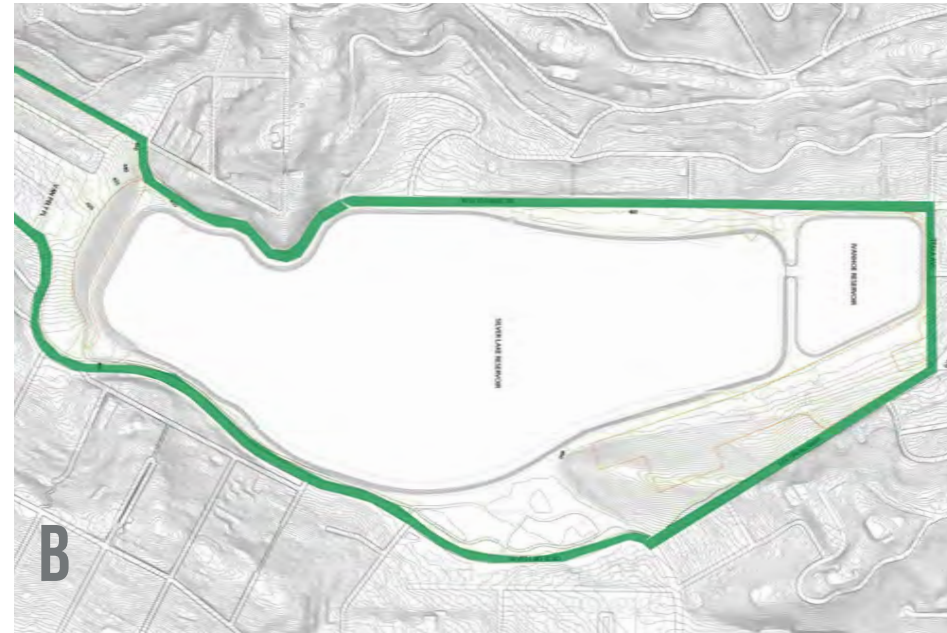


JUSTIFICATION

Residential



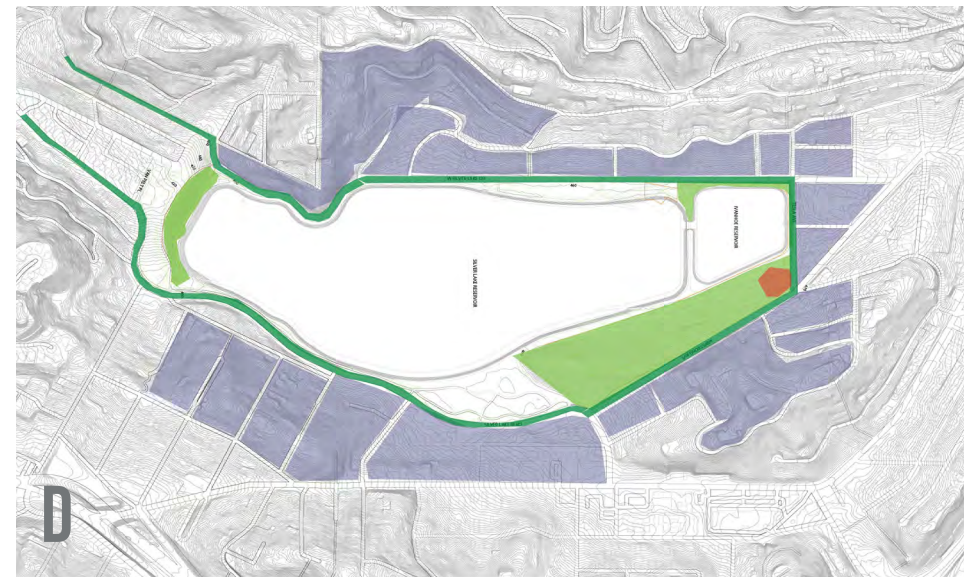
Vehicular Circulation



Wildlife Corridors







School & Combined Overlay



HABITAT

COMMUNITY GARDEN &
FLOATING ISLANDS

LEGEND

-  A. RESIDENTIAL AREA
-  B. VEHICULAR CIRCULATION
-  C. WILDLIFE CORRIDOR
-  D. SCHOOL

ENLARGEMENT PLAN



KEY MAP



HABITAT

COMMUNITY GARDEN & FLOATING ISLANDS

LEGEND

- A. FLOATING ISLANDS
- B. COMMUNITY GARDEN
- C. GARDEN SHED
- D. HAND/CROP WASHING STATION
- E. PICNIC AREA
- F. SCHOOL
- G. MAIN JOGGING/RUNNING/BIKE PATH
- H. IVANHOE RESERVOIR

INSPIRATION IMAGES

HABITAT

COMMUNITY GARDEN & FLOATING ISLANDS



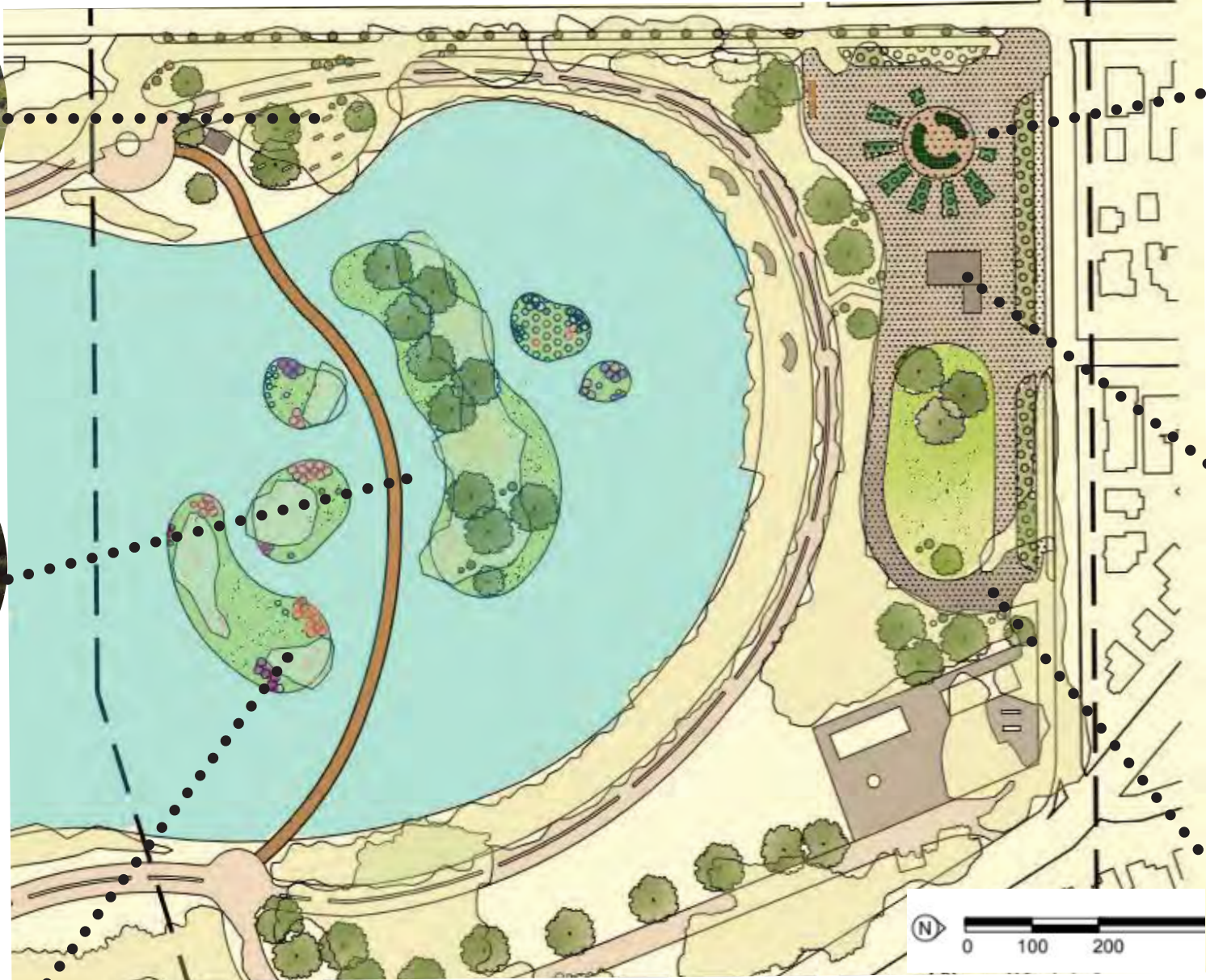
A



B



C



D



E



F

LEGEND

A. PICNIC AREA

B. WALKWAY

C. FLOATING ISLAND

D. COMMUNITY GARDEN

E. GARDEN SHED

F. DG WALKING PATH

SUSTAINABLE ELEMENTS

HABITAT

COMMUNITY GARDEN & FLOATING ISLANDS



A



B

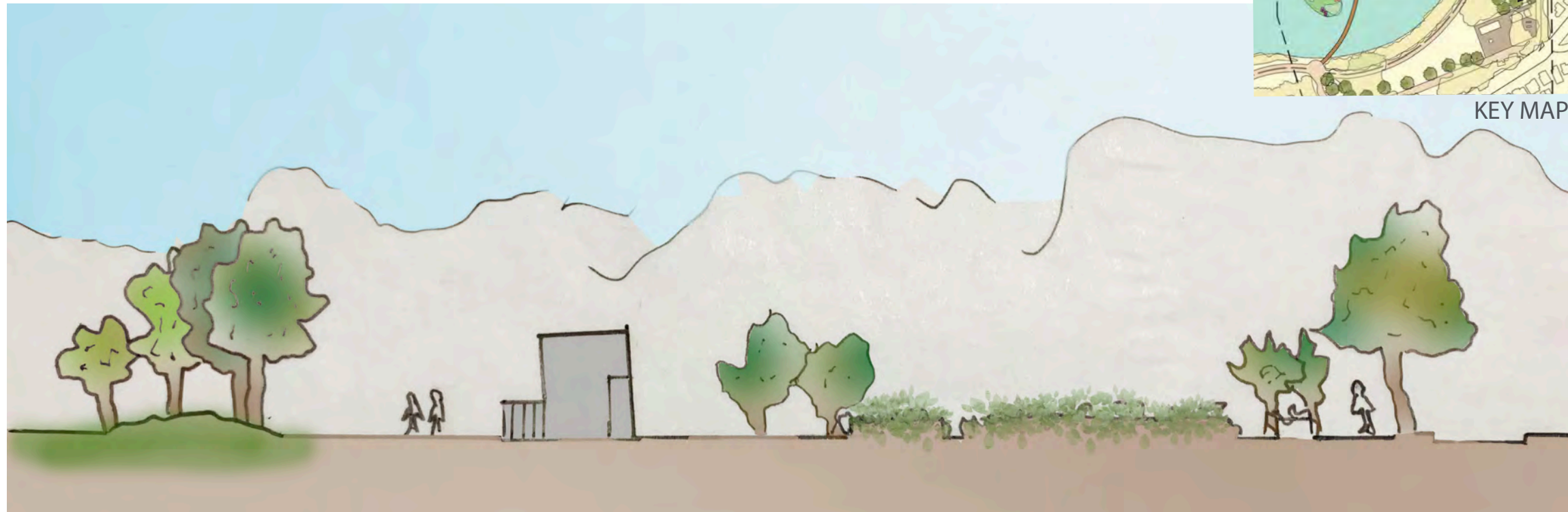


C

LEGEND

- A. HAND/CROP WASHING STATION
- B. RECYCLED WOOD PLANTERS
- C. PERMEABLE GRAVEL

SECTION & PERSPECTIVE



HABITAT

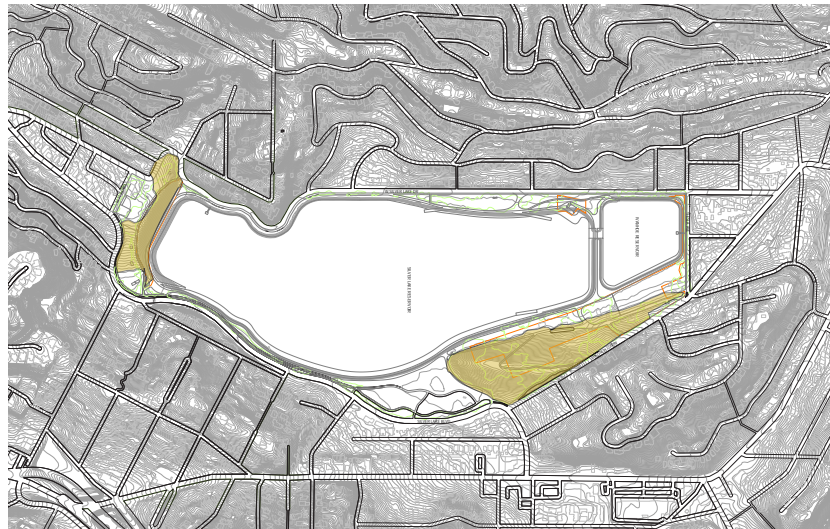
COMMUNITY GARDEN & FLOATING ISLANDS

LEGEND

- A. PERMEABLE GRAVEL
- B. CENTER PLANTER
- C. VEGETABLE PLANTERS
- D. RESIDENTIAL STREET

JUSTIFICATION

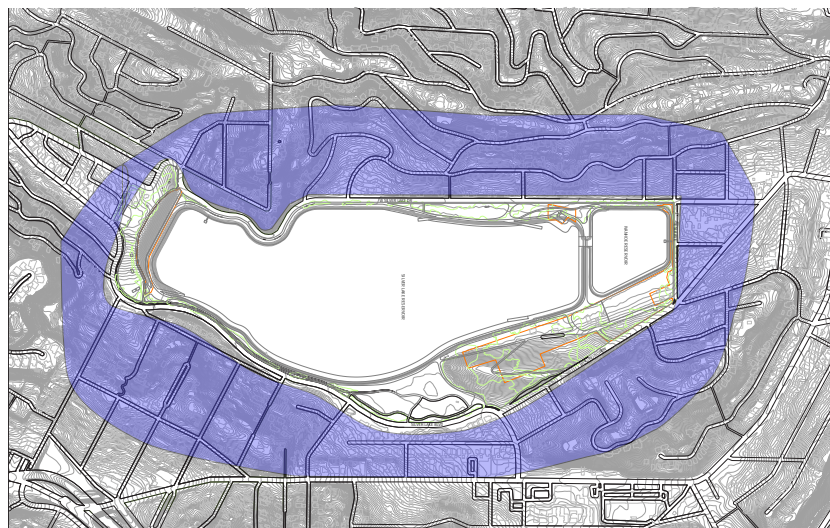
SLOPES



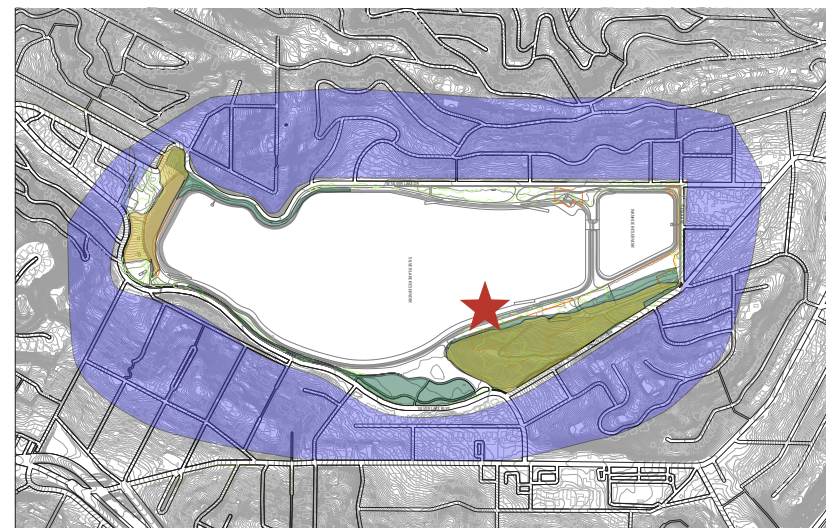
PROTECTED TREES







RESIDENTIAL



COMBINED OVERLAY



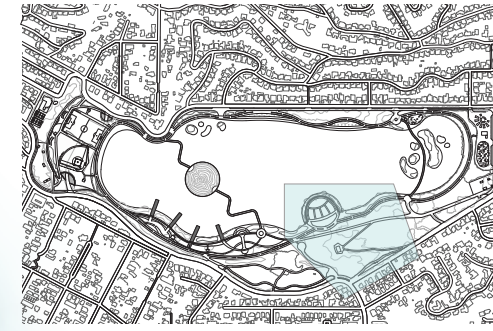
LEGEND

-  SLOPES
-  PROTECTED TREES
-  RESIDENTIAL
-  BEST LOCATION FOR AMPHITHEATRE

PASSIVE RECREATION

AMPHITHEATRE & HIKING HILL

ENLARGEMENT PLAN



KEY MAP

PASSIVE RECREATION

AMPHITHEATRE & HIKING HILL



LEGEND

- A. RESERVOIR
- B. AMPHITHEATRE DECK BELOW WATER LEVEL
- C. SLOPED LAWN SEATING AREA
- D. PLANTING AREA ABOVE WATER LEVEL
- E. LAWN AREA WITH PLANTING
- F. MAIN JOGGING / RUNNING / BIKE PATH
- G. PLANTING BUFFER
- H. RESEARCH/EDUCATION CENTER
- I. NATIVE GARDEN
- J. PROTECTED PLANTING
- K. HIKING TRAIL

INSPIRATION IMAGES



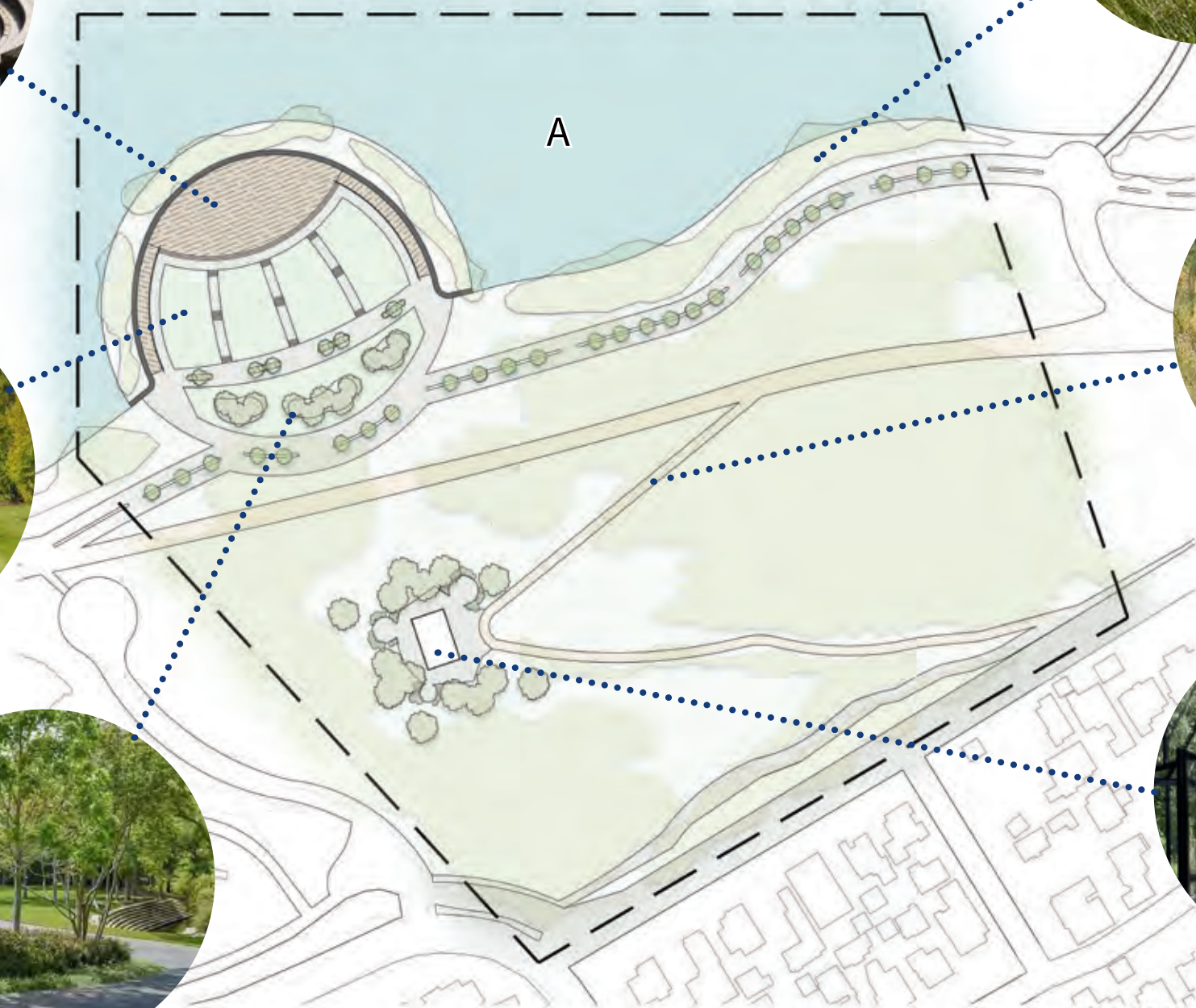
B



C



D



E



F



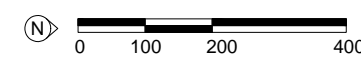
G

PASSIVE RECREATION

AMPHITHEATRE & HIKING HILL

LEGEND

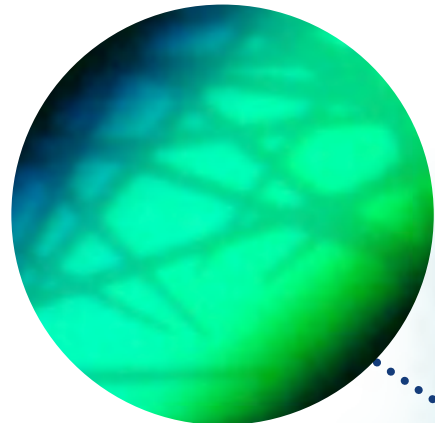
- A. RESERVOIR
- B. AMPHITHEATRE DECK BELOW WATER LEVEL
- C. SLOPED LAWN SEATING AREA
- D. LAWN AREA WITH PLANTING
- E. PLANTING BUFFER
- F. MEADOW/HIKING TRAIL
- G. RESEARCH/EDUCATION CENTER



SUSTAINABLE ELEMENTS

PASSIVE RECREATION

AMPHITHEATRE & HIKING HILL



B



C



A



B

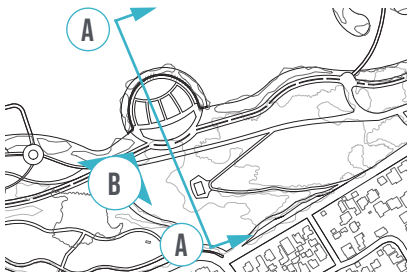


LEGEND

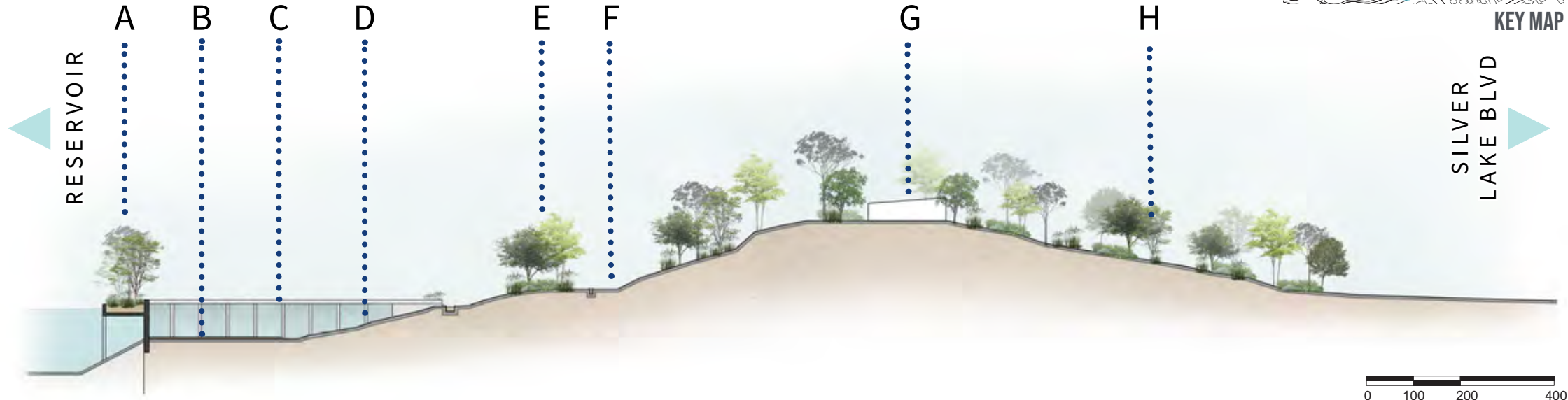
- A. PERMEABLE PAVERS FOR PEDESTRIAN PATHWAYS (BELGARD)
 - WATER FILTRATION
 - REFLECTIVE INDEX HIGH; REDUCE HEAT
- B. BIRD PROTECTANT GLASS (ORNILUX)
 - BIOMIMICRY (INSPIRED BY SPIDER WEB UV REFLECTIVE COATING)
 - REDUCE BIRD MORTALITY
- C. ARTIFICIAL TURF (SHAWGRASS)
 - YEAR ROUND INTEREST
 - SAVES WATER
 - USES COCONUT HUSKS TO REDUCE HEAT



SECTION & PERSPECTIVE



KEY MAP



SECTION A



PERSPECTIVE B

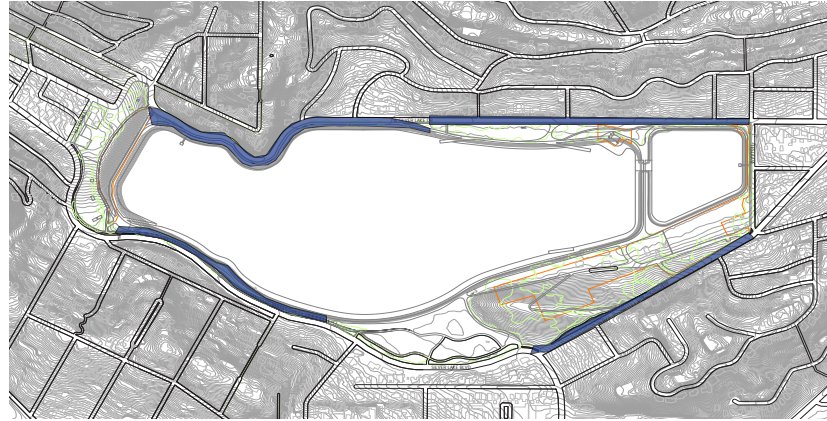
PASSIVE RECREATION

AMPHITHEATRE & HIKING HILL

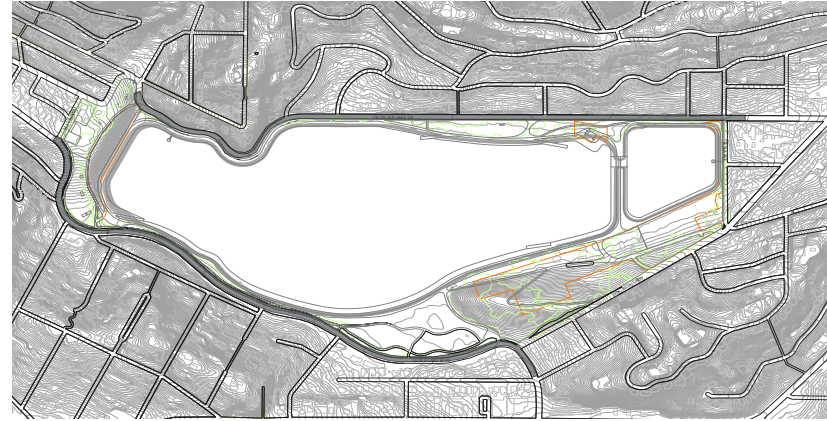
LEGEND

- A. FLOATING PLANTER IN LAKE
- B. AMPHITHEATRE STAGE
- C. CONCRETE AND GLASS WALLS
- D. SLOPED SEATING AREA
- E. PLANTING AREA
- F. MAIN JOGGING / RUNNING / BIKE PATH
- G. RESEARCH/EDUCATION CENTER
- H. HIKING TRAILS / PROTECTED TREES

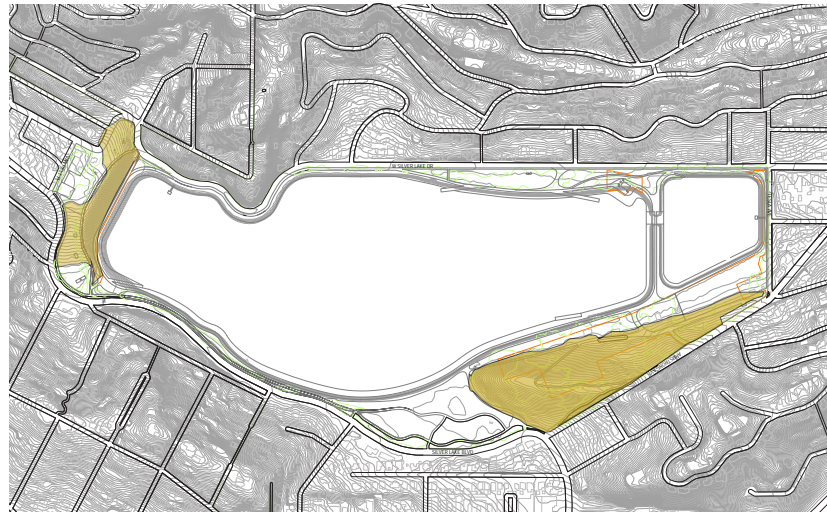
JUSTIFICATION



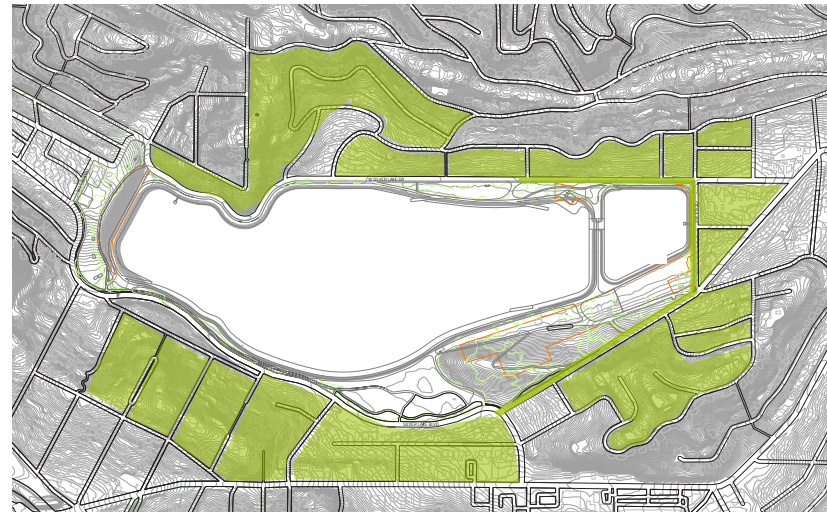
PEDESTRIAN CIRCULATION



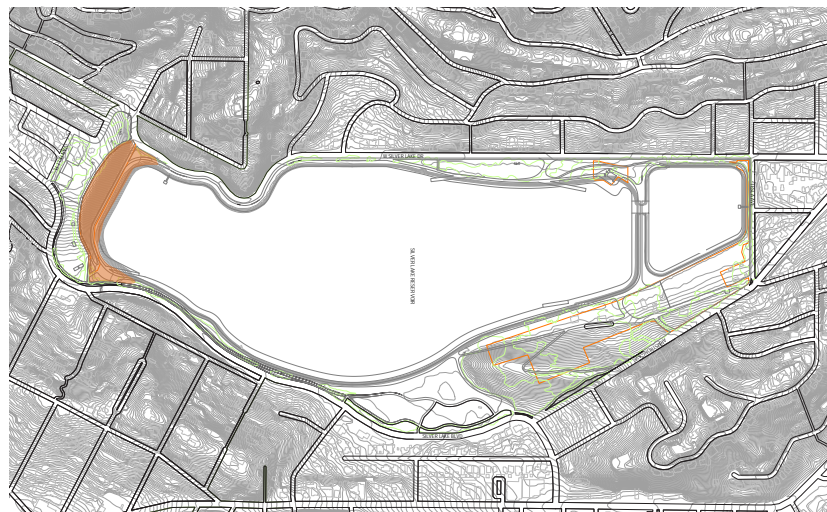
VEHICULAR CIRCULATION



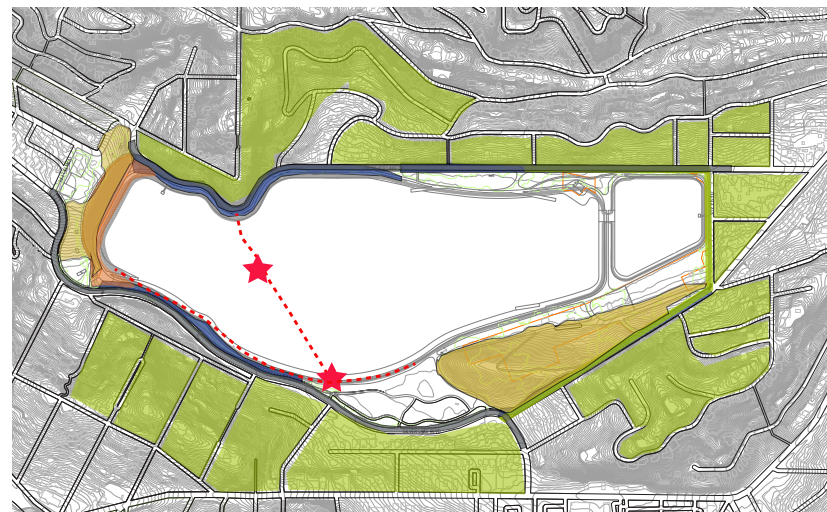
SLOPES



HIGH DENSITY RESIDENTIAL POPULATION



ACTIVE RECREATION



ANALYSIS COMBINED



PASSIVE RECREATION

PROMENADE, CAFE & ISLAND

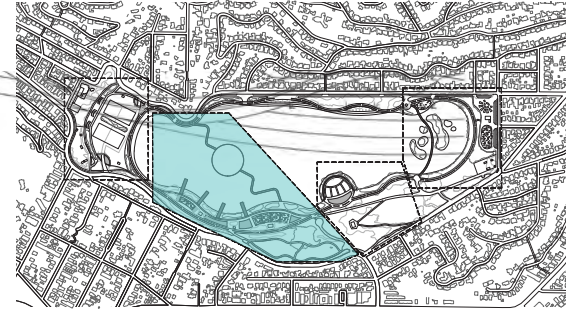
LEGEND

-  PEDESTRIAN CIRCULATION
-  VEHICULAR CIRCULATION
-  SLOPES
-  HIGH DENSITY RESIDENTIAL POPULATION
-  BEST LOCATION FOR PROMENADE, CAFE AND CONNECTION THROUGH ISLAND
-  CONNECTION THROUGH ISLAND

ENLARGEMENT PLAN


PASSIVE RECREATION

CAFE, PROMENADE & ISLAND

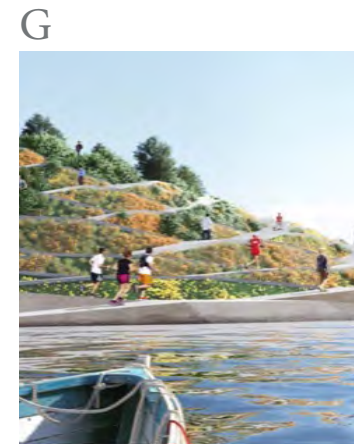


KEY MAP

LEGEND

	WATER FEATURE		A. CAFE
	PLANT MATERIAL		B. RESTROOMS
	ARTIFICIAL TURF		C. BIKE RENTAL
	NATIVE PLANTS		D. OVERLOOKS
	PERMEABLE PAVING		E. SERVICE TURNAROUND
	DECKING		F. DROP OFF
	AMMENITIES		G. ISLAND
	DECIDUOUS TREE		
	PALM TREE		
	PINE TREE		

INSPIRATION IMAGES



PASSIVE RECREATION

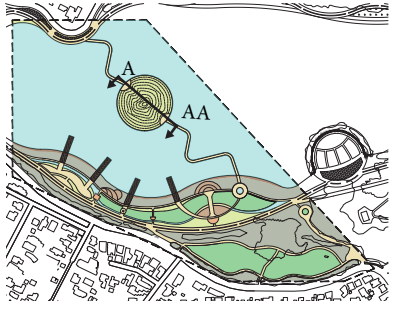
CAFE, PROMENADE & ISLAND

LEGEND

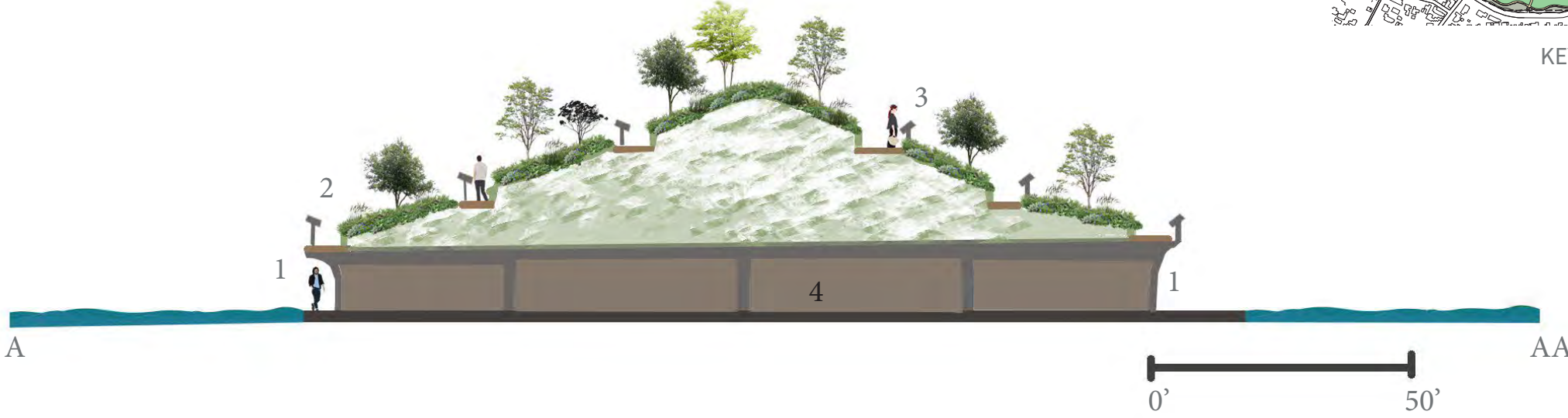
- A. OVERLOOKS
- B. WATER FEATURE
- C. PLANTING/PERMEABLE PAVING
- D. IMPROVED BIKE PATHS
- E. STEPS DOWN TOWARD LAKE
- F. PROMENADE
- G. ISLAND/CONNECTION



SECTION & PERSPECTIVE



KEY MAP



PASSIVE RECREATION

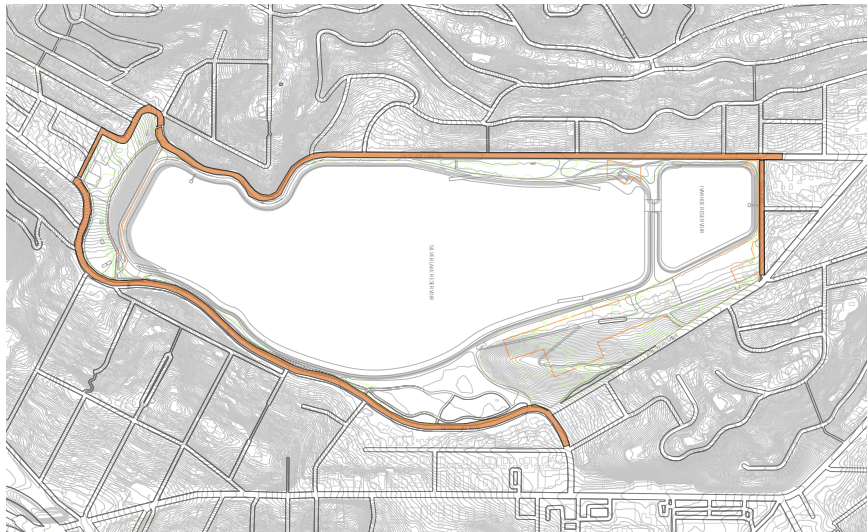
CAFE, PROMENADE & ISLAND

LEGEND

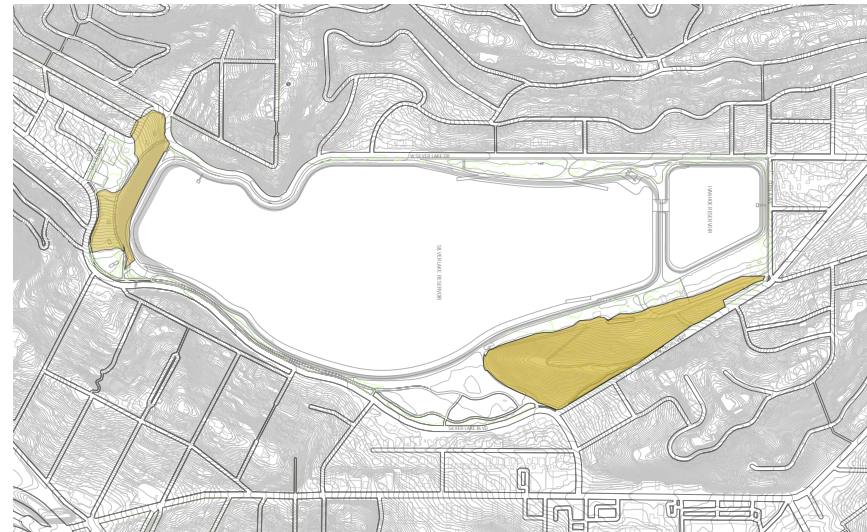
- 1. ENTRANCE/EXIT
- 2. BRIDGE/PATHS
- 3. EDUCATIONAL STATIONS
- 4. RESTROOMS
- 5. OVERLOOKS
- 6. ISLAND/CONNECTION
- 7. PROMENADE
- 8. WATER FEATURE
- 9. ARTIFICIAL TURF

JUSTIFICATION

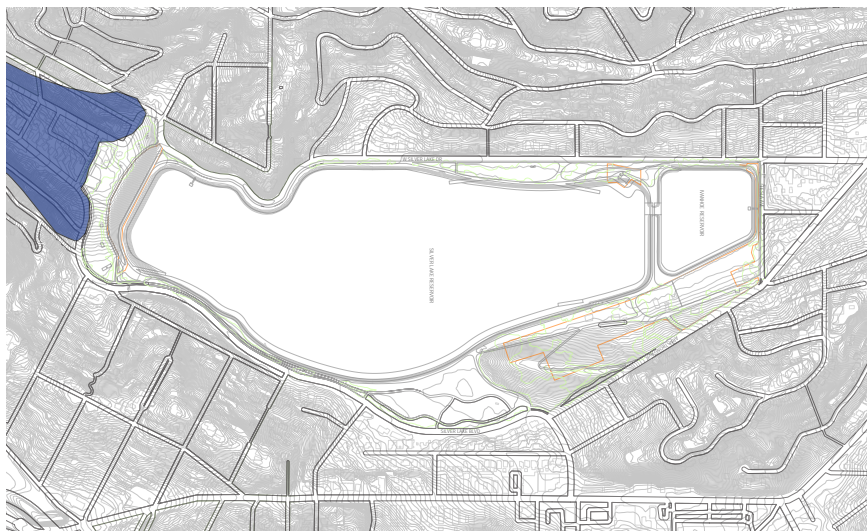
ADJACENT PARKING



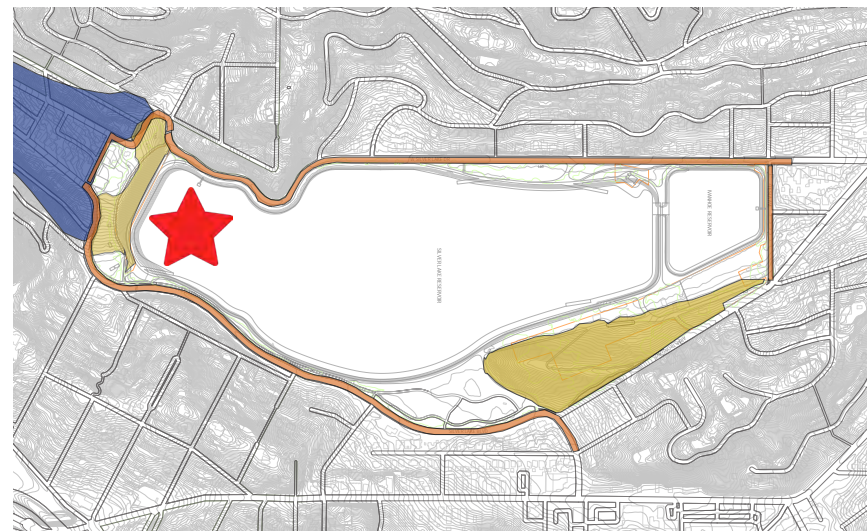
SLOPES



COMMERCIAL CENTER



COMBINED OVERLAY



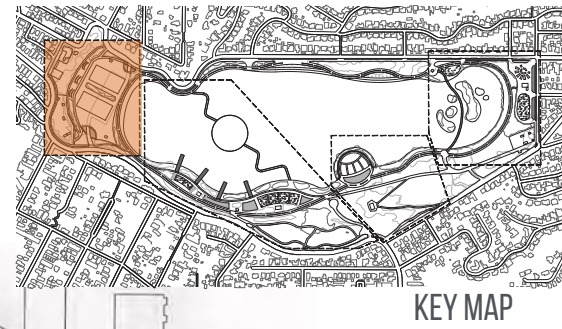
ACTIVE RECREATION

SPORTS FIELDS
AND UNDERGROUND
PARKING

LEGEND

-  ADJACENT PARKING
-  SLOPES
-  COMMERCIAL CENTER / DENSITY
-  BEST LOCATION FOR EXPANDED SPORTS FIELDS AND UNDERGROUND PARKING

ENLARGEMENT PLAN



ACTIVE RECREATION

SPORTS FIELDS
AND UNDERGROUND
PARKING

LEGEND

- A. REC CENTER AND BASKETBALL COURTS
- B. SMALL DOG PARK
- C. LARGE DOG PARK
- D. CAFE, BATHROOM, AND DINING DECK
- E. BASEBALL FIELD
- F. SOCCER FIELD
- G. VEHICULAR ACCESS TO PARKING GARAGE
- H. PEDESTRIAN ACCESS TO PARKING GARAGE
- I. ACTIVE SHORELINE

INSPIRATION IMAGES



A.



B.



C.



D.



ACTIVE RECREATION

SPORTS FIELDS
AND UNDERGROUND
PARKING

LEGEND

A. REC CENTER AND BASKETBALL COURTS

B. CAFE, BATHROOM, AND DINING DECK

C. SOCCER FIELD

D. ACTIVE SHORELINE

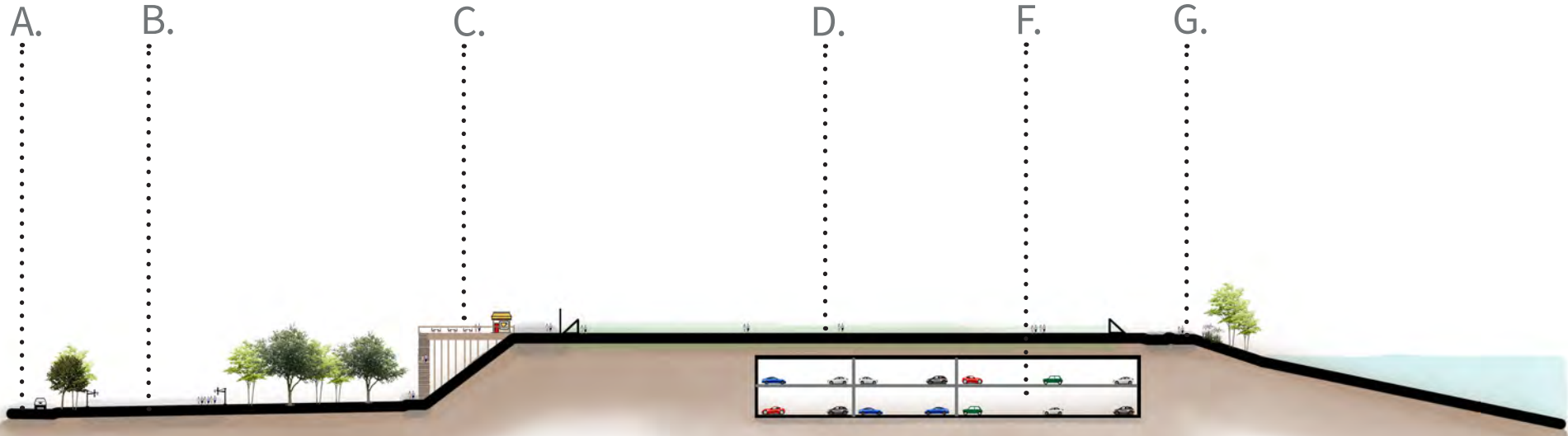
SECTION & PERSPECTIVE

ACTIVE RECREATION

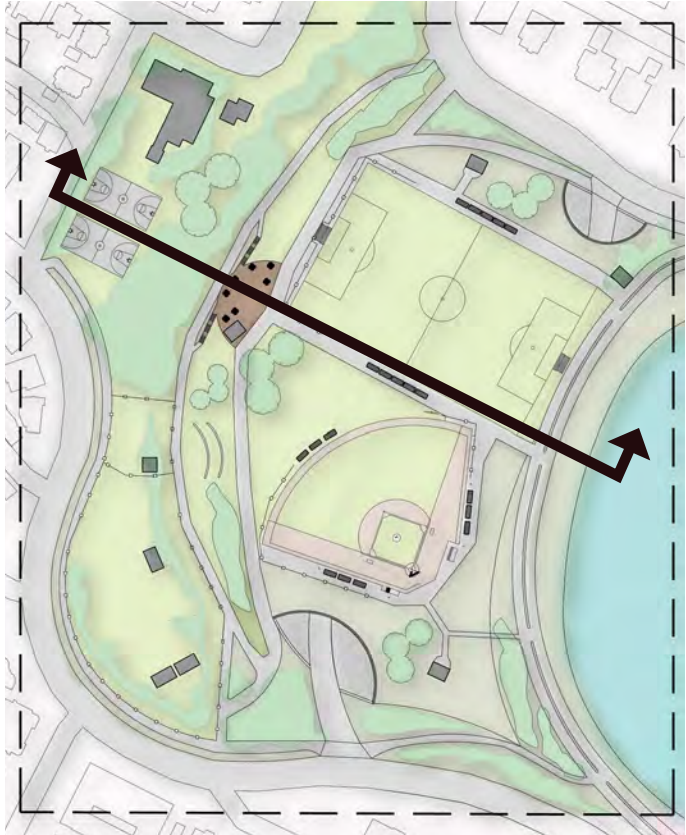
SPORTS FIELDS
AND UNDERGROUND
PARKING

LEGEND

- A. STREET
- B. BASKETBALL COURT
- C. DECK WITH CAFE
- D. SOCCER FIELD
- E. BASEBALL FIELD
- F. UNDERGROUND PARKING
- G. ACTIVE SHORELINE



SCALE: 1" = 100'-0"

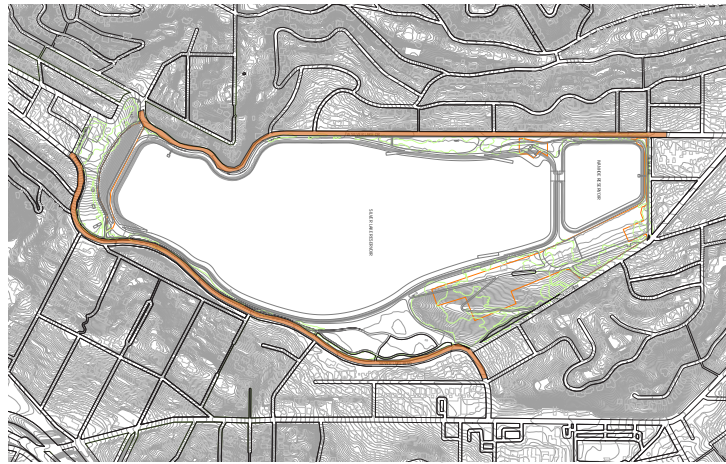


KEY MAP

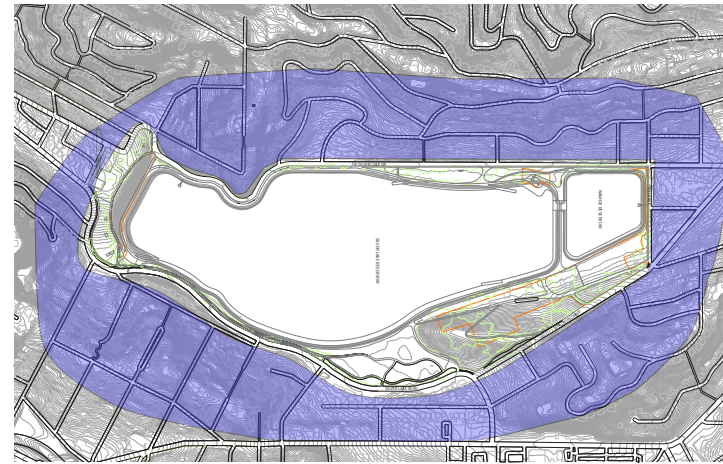


JUSTIFICATION

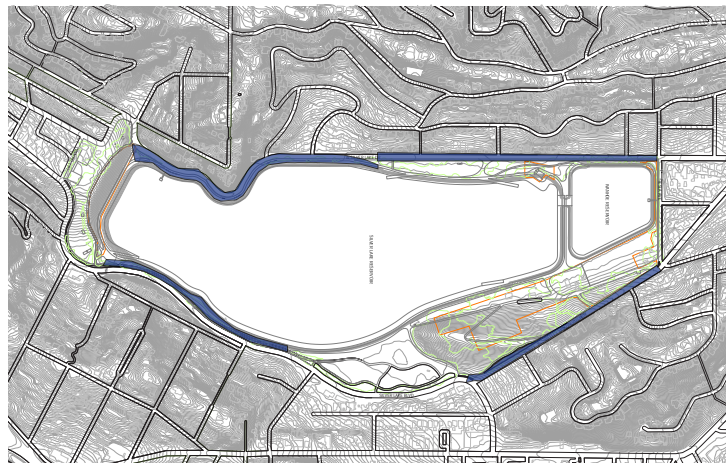
VEHICULAR TRAFFIC



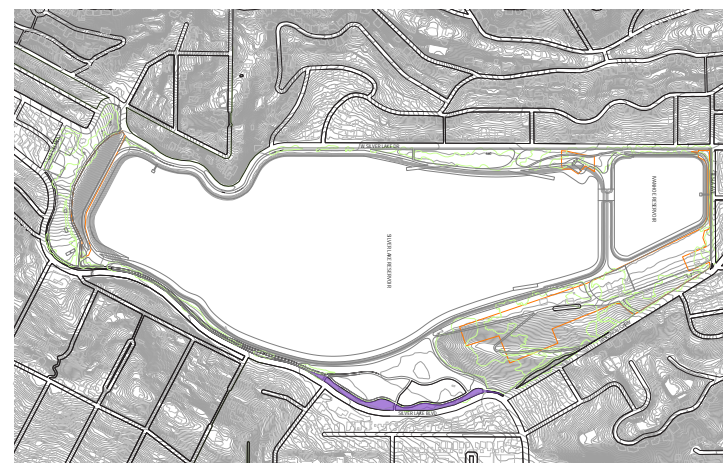
RESIDENTIAL



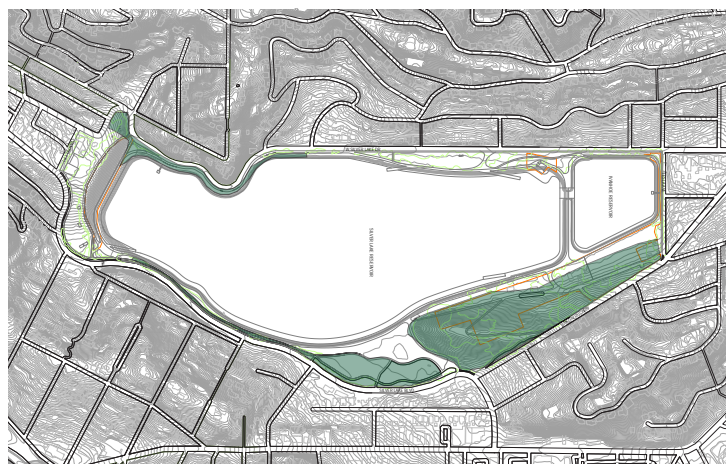
PEDESTRIAN TRAFFIC



PARKWAYS



PROTECTED TREES



COMBINED OVERLAY



PASSIVE RECREATION

PICNIC AREA & HABITAT

LEGEND

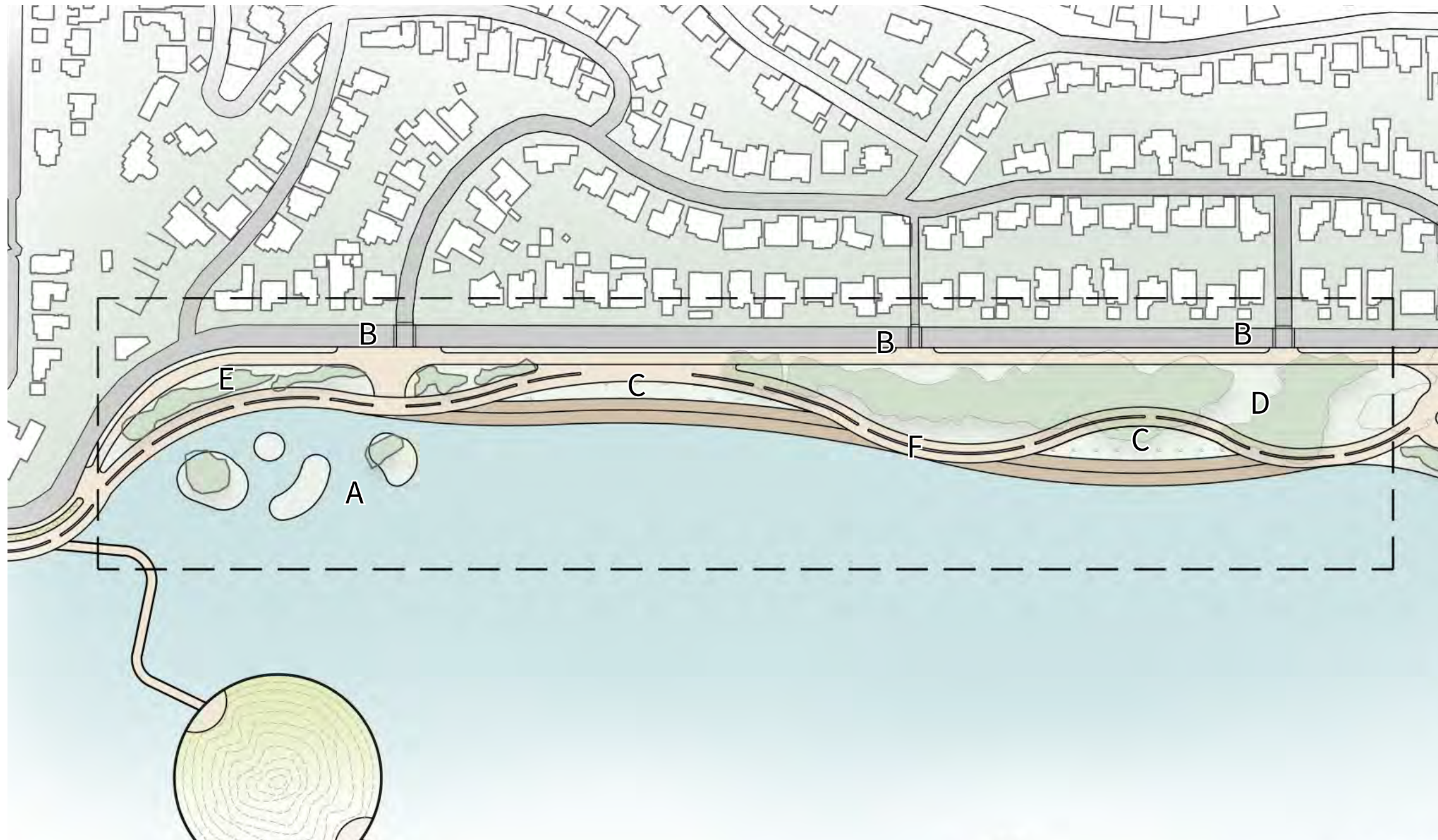
-  PEDESTRIAN TRAFFIC
-  VEHICULAR TRAFFIC
-  PARKWAYS
-  PROTECTED TREES
-  RESIDENTIAL
-  BEST LOCATION FOR HABITAT
-  BEST LOCATION FOR PICNIC AREA



ENLARGMENT PLAN

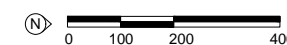
PASSIVE RECREATION

PICNIC AREA & HABITAT



LEGEND

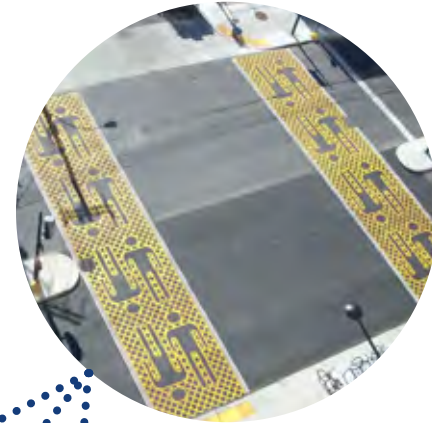
- A. HABITAT ISLANDS
- B. CROSSWALKS
- C. LAWN AREAS WITH VIEWING DECK
- D. PICNIC AREA
- E. HABITAT PLANTING AREA
- F. WALKING/JOGGING/BIKE PATH



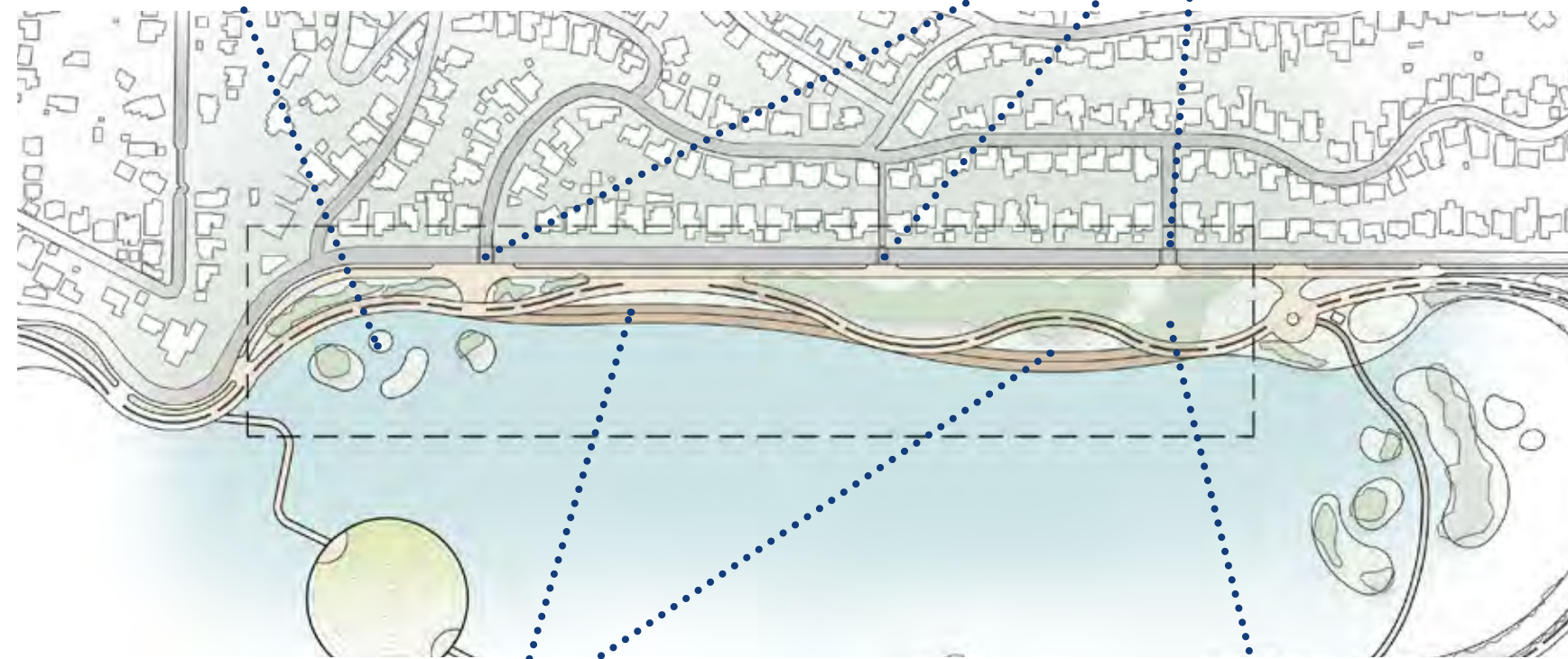
INSPIRATION IMAGES



A



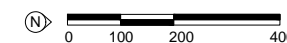
B



C



D



PASSIVE RECREATION

PICNIC AREA & HABITAT

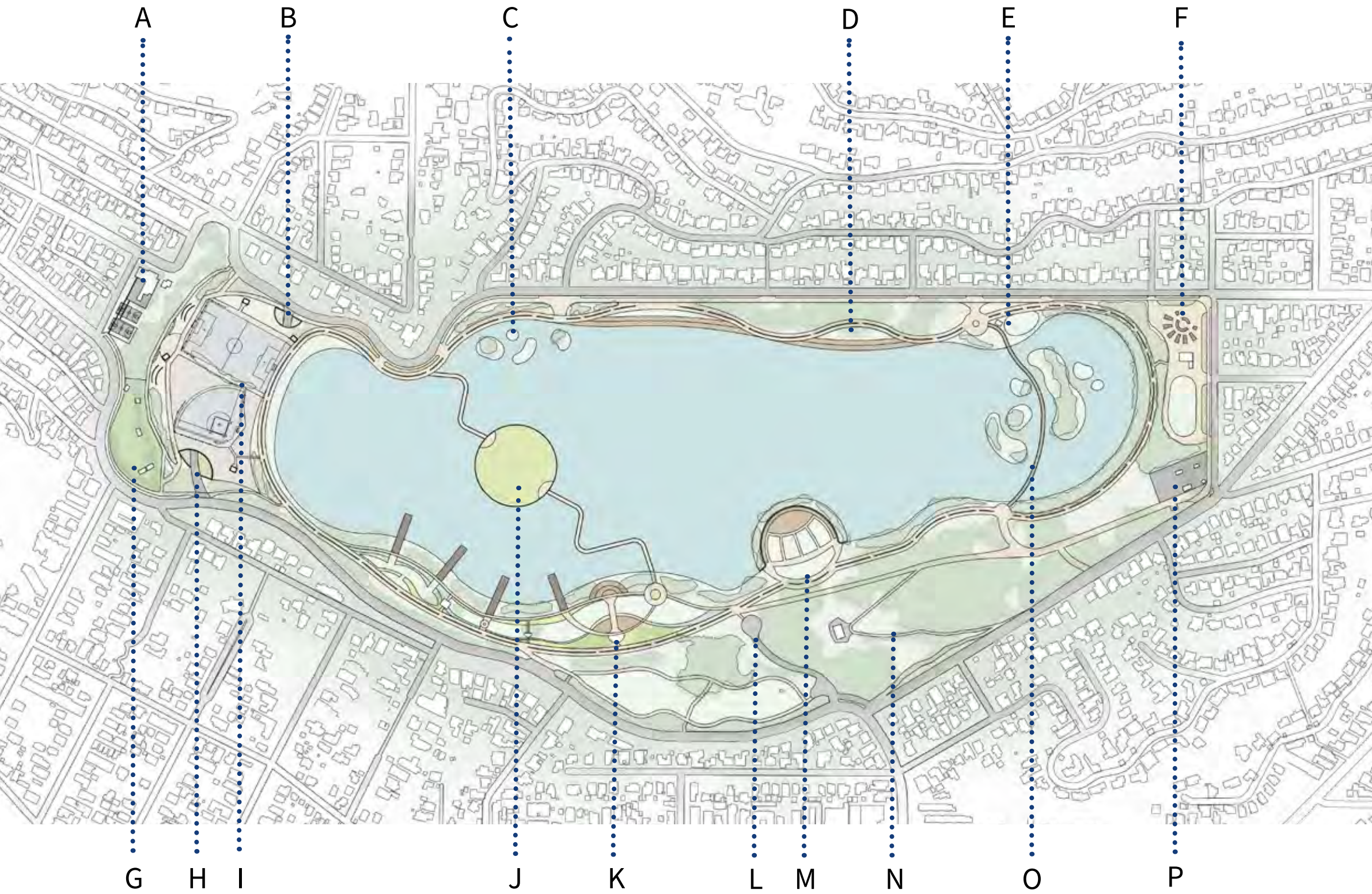
LEGEND

- A. HABITAT ISLANDS
- B. IMPLEMENTATION OF SAFER CROSSWALKS
- C. LAWN AREAS WITH VIEWING DECK
- D. PICNIC AREA

REIMAGINING SILVER LAKE RESERVOIR

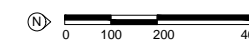
MASTER PLAN

SITE PLAN & PROGRAMS



LEGEND

- A. RECREATION CENTER
- B. UNDERGROUND PARKING (WEST ENTRANCE)
- C. HABITAT ISLANDS
- D. LAWN AND SEATING AREA
- E. PICNIC AREA
- F. COMMUNITY GARDEN AND PARK
- G. REVITALIZED DOG PARK
- H. UNDERGROUND PARKING (EAST ENTRANCE)
- I. SPORT FIELDS
- J. ISLAND LOOKOUT
- K. CAFE / PROMENADE
- L. SERVICE DROP-OFF
- M. AMPHITHEATRE
- N. HIKING TRAILS TO EDUCATION CENTER
- O. BRIDGE ACROSS HABITAT ISLANDS
- P. EXISTING SCHOOL



REFERENCES

Area 1: Community Garden and Floating Islands

[https://www.pinterest.com/tammyhroders/veggie-garden-fruit-trees/](https://www.pinterest.com/tammyhrogers/veggie-garden-fruit-trees/)

<https://vegetable.gartenlove.com/restaurante-paisajistak-donostia-arzak-lurlur-paisajistak-restaurante-arz/>

<http://www.500eco.com/exhibits/cleaning-wastewater-with-floating-island-technology>

Area 2: Amptheatre and Hiking Trails

<http://gardenhouz.com/95-beautiful-modern-english-country-garden-design-ideas/>

<https://www.pinterest.com/pin/760756562042236738/>

<https://www.pinterest.com/pin/760756562042236703/>

Area 3: Cafe, Island, Promenade

Landscape Architecture Magazine: Chicago River

<https://landscapearchitecturemagazine.org/2017/03/07/walking-the-walk/>

Instagram: Architecture De Paysage

Pinterest: Summer and fall at the Canadian Museum of Civilization Plaza in Ottawa. Courtesy of Serenity in the Garden blog. Detail.com: Hunter's Point South Waterfront Park in New York <https://www.detail-online.com/article/green-meets-grey-hunter-s-point-south-waterfront-park-in-new-york-33598/>

Pinterest: Public plaza of the Galaxy SoHo designed by Zaha Hadid Architects and EcoLand Design Group in Beijing

Pinterest: Bow RiverWalk' by Stantec entered into the #waterfrontaward

Roy Ooms Photography #landscapearchitecture

ArchDaily: Lugano Lakefront

<https://www.archdaily.com/932041/carlo-ratti-associati-reveals-new-vision-plan-for-lugano-waterfront/>

Area 4: Sports Fields and Underground Parking

Promenade Samuel-De Champlain

<https://www.quebec-cite.com/en/quebec-city-and-area/promenades-and-public-squares/samuel-de-champlain/>

<https://www.pinterest.com/pin/250935010472028024/>

<https://noithatsango.vn/lat-san-ngoai-troi-cho-khong-gian-san-thuong-tai-sao-khong.html>

<https://www.pinterest.com/pin/174373816803748208/>

https://ar.pinterest.com/anto_0711/

Area 5: Habitat and Picnic Area

<https://www.pinterest.com/pin/760756562041987120/>

<https://www.pinterest.com/pin/760756562042026602/>

<https://www.pinterest.com/pin/760756562042200039/>