



# SLOPE PLANTING & RESTORATION

JANET TELLER

UCLA Extension Landscape Architecture

Landscape Design 5: Planting Design

Instructor: Stephen Davis

Spring 2020

# TABLE OF CONTENTS


DESIGN NARRATIVE	1
SITE ANALYSIS	2
SECTION ELEVATION	3
PLANT PALETTE - TREES & HYDROSEED	4
CONCEPTUAL PLANTING PLAN	5
PLANT PALETTE - SHRUBS	6
CONCEPTUAL PLANTING PLAN	7

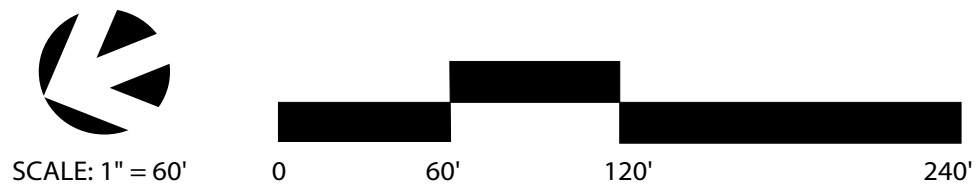
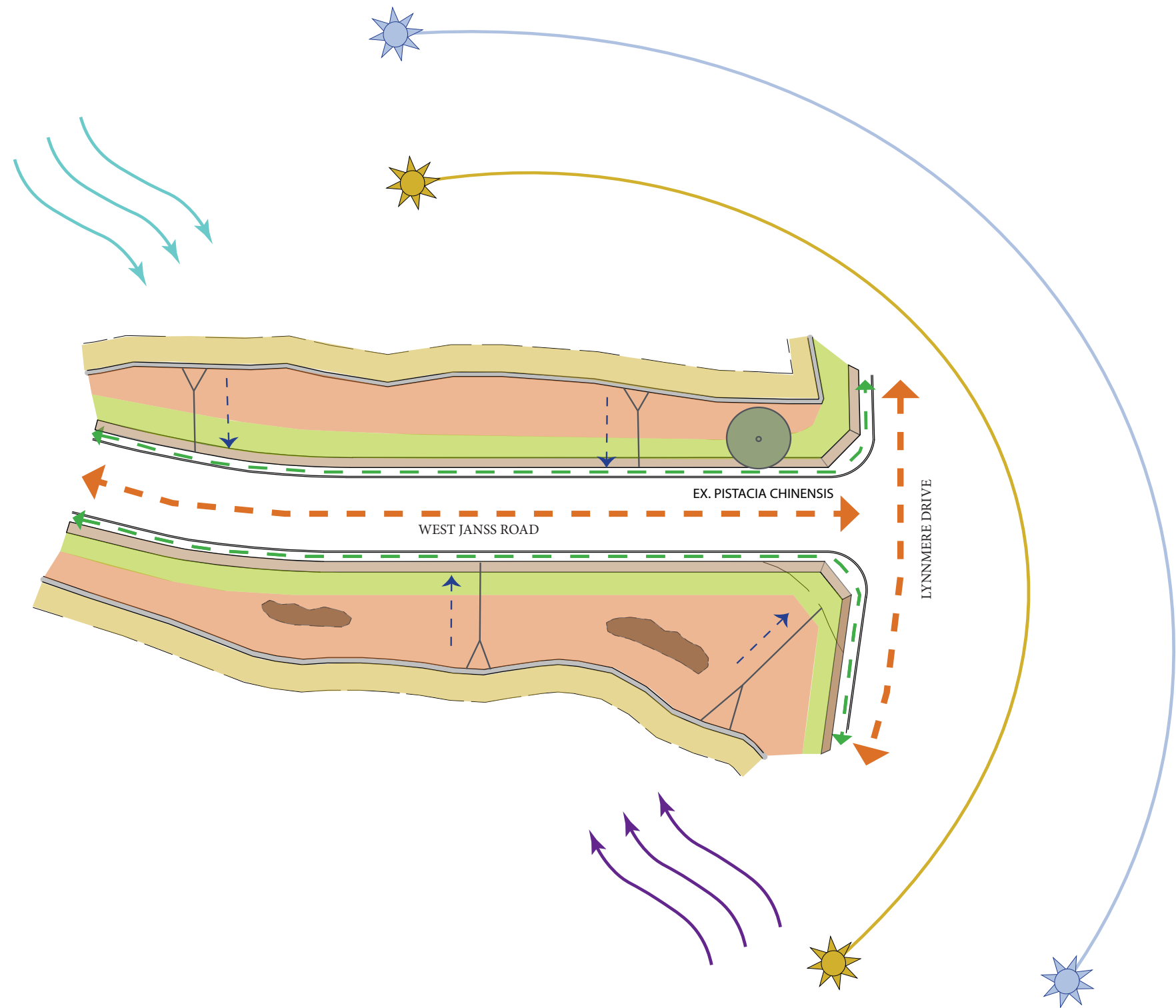
# DESIGN NARRATIVE

The slopes located on either side of West Janss Road in Thousand Oaks, California are in great need of erosion control and an overall restoration of the disturbed area adjacent to the natural sage scrub. Careful consideration has been made in the selection of trees, shrubs and ground cover utilizing the engineering properties of plants to help to stabilize the graded slopes. As the area is a thoroughfare for the Lynnmere Estates neighborhood, it is also important for the space to be enjoyed by all passers by while creating a rich habitat for wildlife. The majority of plants selected are native to California which will not only provide a natural habitat but will help with water conservation, reduce maintenance, reduce air pollution and protect the soil. Seasonal interest was also taken into consideration so that the various colors of the blossoms and foliage can be enjoyed year round.

# SITE ANALYSIS

## LEGEND

-  Existing tree
-  Summer sun pattern
-  Winter sun pattern
-  5' transition zone between sidewalk and native planting
-  Low growing and medium size shrubs shall be placed at lower slope areas
-  Medium and large size shrub massings shall be placed at the mid and upper slope areas
-  Restoration area
-  Existing rock outcropping
-  SOUTHWEST PREVAILING WINDS
-  SANTA ANA WINDS
-  Downhill direction of slope
-  Downhill direction of drainage
-  Vehicular Circulation
-  Pedestrian Circulation
-  21 Sunset Western Garden Book climate zone



# SECTION ELEVATION

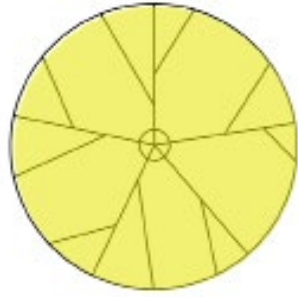


SCALE 1" = 10'-0"

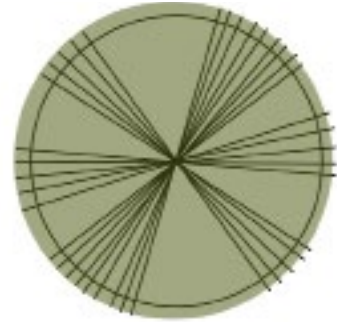


# PLANT PALETTE

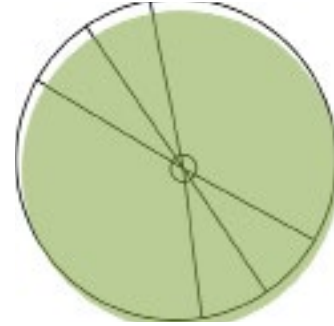
## TREES



*Parkinsonia florida*  
 Desert Museum  
 Height: 25' – 50'  
 Spread: 15 – 50'  
 WUCOLS - Low



*Plantanus racemosa*  
 California Sycamore  
 Height: 25' – 50'  
 Spread: 15 – 50'  
 WUCOLS - Low



*Pistacia chinensis*  
 Chinese pistache  
 Height: 25' – 35'  
 Spread: 25' – 35'  
 WUCOLS - Medium



*Quercus agrifolia*  
 Coast Live Oak  
 Height: 25' - 82'  
 Spread: 15' - 35'  
 WUCOLS - Low

## HYDROSEED MIX - RESTORATION AREA



Artemisia californica 20%



Hesperoyucca whipplei 20%



Lupinus bicolor 10%



Salvia apiana 20%



Salvia mellifera 20%



Trifolium willdenovii 10%

## HYDROSEED MIX - GROUND COVER



Encelia farinosa 30%



Gilia capitata 10%



Nemophila menziesii 10%



Lasthenia californica 10%

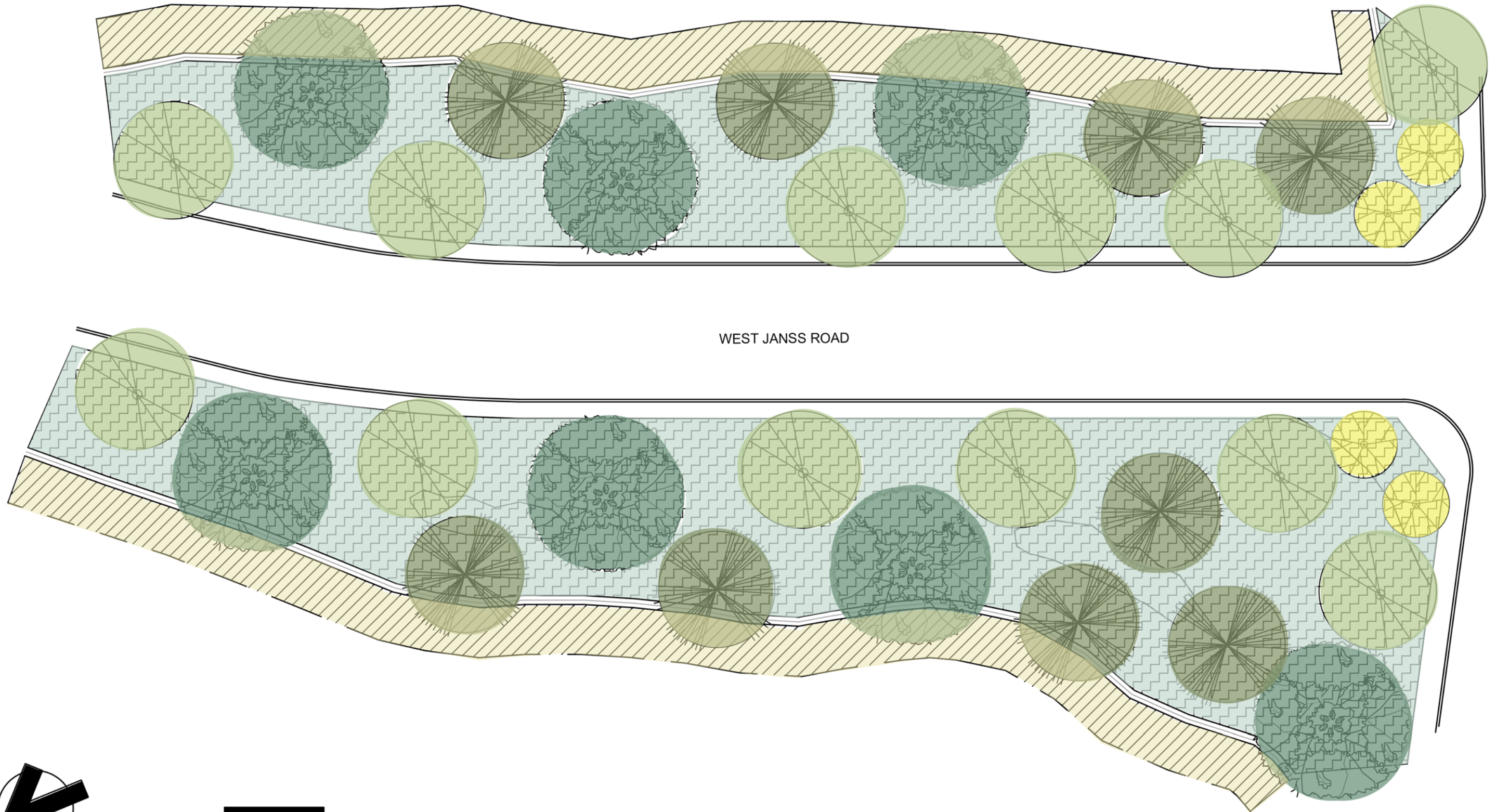


Phacelia ciliata 10%



Stipa pulchra 30%

# CONCEPTUAL PLANTING PLAN - TREES AND HYDROSEED



WEST JANSS ROAD

LYNNMERE DRIVE



SCALE: 1" = 30'



0 30' 60' 120'

# PLANT PALETTE

## SHRUBS



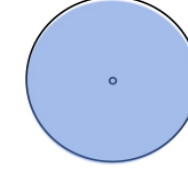
*Abutilon palmeri*  
Palmer's Indian Mallow  
Height: 3' - 8'  
Spread: 3' - 5'  
WUCOLS - Low



*Atriplex lentiformis*  
Big Saltbush  
Height: 3.3' - 10'  
Spread: 10'  
WUCOLS - Low



*Calliandra californica*  
Baja fairy duster  
Height: 3'-4'  
Spread: 4'-5'  
WUCOLS - Very Low



*Ceanothus 'Ray Hartman'*  
Ray Hartman Wild Lilac  
Height: 12'-20'  
Spread: 10'-20'  
WUCOLS - Low



*Epilobium canum*  
California Fuchsia  
Height: 1.6' -5'  
Spread: 2'-9'  
WUCOLS - Very Low



*Eriogonum arborescens*  
Santa Cruz Island Buckwheat  
Height: 1.6' - 7'  
Spread: 2'-9'  
WUCOLS - Very Low



*Eriogonum giganteum*  
St. Catherine's Lace  
Height: 1.6'-5'  
Spread: 4' -10'  
WUCOLS - Very Low



*Eschscholzia californica*  
California Poppy  
Height: 0.16' - 2'  
Spread: 1'-2'  
WUCOLS - Very Low



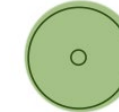
*Felicia fruticosa*  
Shrub Aster  
Height: 2'-3'  
Spread: 2'-3'  
WUCOLS - Low



*Mimulus aurantiacus*  
Sticky monkey flower  
Height: 3.9' - 5'  
Spread: 5'  
WUCOLS - Very Low



*Muhlenbergia rigens*  
Deer Grass  
Height: 4'-5'  
Spread: 4'  
WUCOLS - Very Low



*Rhus integrifolia*  
'Lemonade Berry'  
Height: 6'-10'  
Spread: 10'-15'  
WUCOLS - Low



# CONCEPTUAL PLANTING PLAN - SHRUB



WEST JANS S ROAD

LYNNMERE DRIVE



SCALE: 1" = 30'

