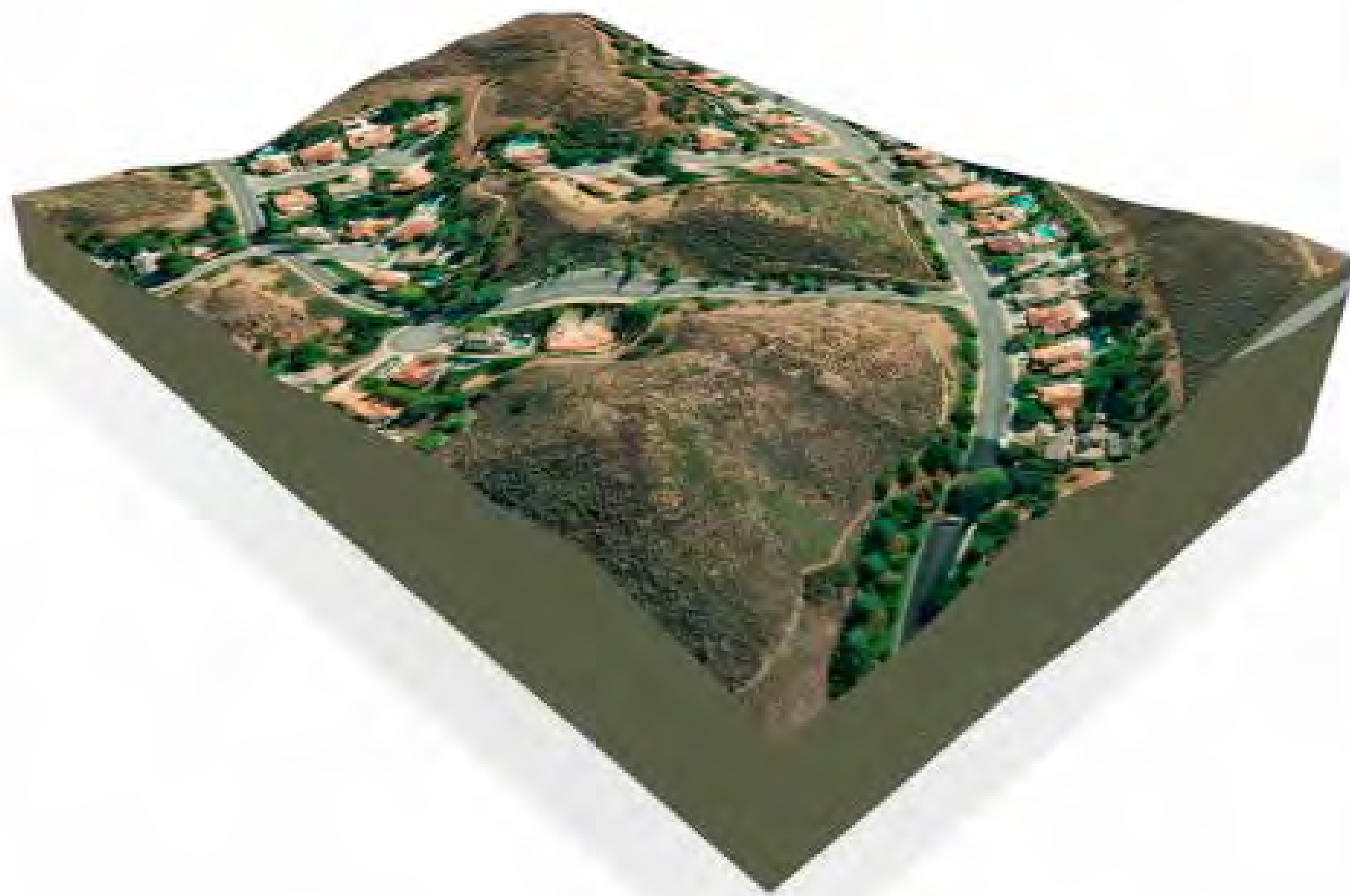




**SLOPE HABITAT RESTORATION**  
THOUSAND OAKS, CALIFORNIA  
KATY KIRKPATRICK • PLANTING DESIGN • DAVIS • SPRING 2020





## DESIGN NARRATIVE

THE SITE AT WEST JANNS ROAD AND LYNNMERE DRIVE, LIKE MANY AREAS, HAS BEEN DAMAGED BY HEAVY CONSTRUCTION. THIS CONSTRUCTION WREAKS HAVOC ON NATURAL SLOPES AS SUBDIVISIONS, ROADS AND COMMERCIAL AREAS ARE DEVELOPED.

THE SITE IS NATURALLY A SAGE SCRUB ENVIRONMENT. THE UPPER PORTION OF THE GRADE REMAINS INTACT WITH THESE NATIVE PLANTS BUT THE LOWER SLOPE REQUIRES RESTORATION/STABILIZATION NOT ONLY FOR HABITAT VALUE BUT FOR SAFETY IN THE FACE OF RAPID EROSION.

I'M A NATIVE PLANT AFFICIANODO AND USED A STRICTLY NATIVE PALETTE WITH THE EXCEPTION OF FESTUCA MICROSTACHYS. I MADE AN EXCEPTION FOR THIS GRASS DUE TO ITS ABILITY TO RAPIDLY TAKE ROOT ON A SLOPE (IT'S OFTEN CALLED "3-WEEK FESCUE"). I CHOSE SMALLER TREES FOR THE SITE TO HELP IT KEEP ITS FEELING OF A NATURAL SCRUB. I CREATED AN ALÉE OF ARCTOSTAPHYLOS GLAUCAS ALONG EACH WALK FOR NOT ONLY HABITAT VALUE BUT FOR THEIR YEAR-ROUND BEAUTY. I ALSO CHOSE MORE COLORFUL NATIVES THAT WOULD APPEAL TO THOSE CYCLING OR PASSING THE SITE IN A VEHICLE. SEVERAL PLANTS WERE ALSO CHOSEN FOR THEIR STRONG FRAGRANCE, SPECIFICALLY SALVIA CLEVELANDII. MY HOPE WAS THAT THE SCENT OF THESE EVERGREENS WOULD APPEAL TO PEDESTRIANS AS THEY WALKED THROUGH THE SPACE.

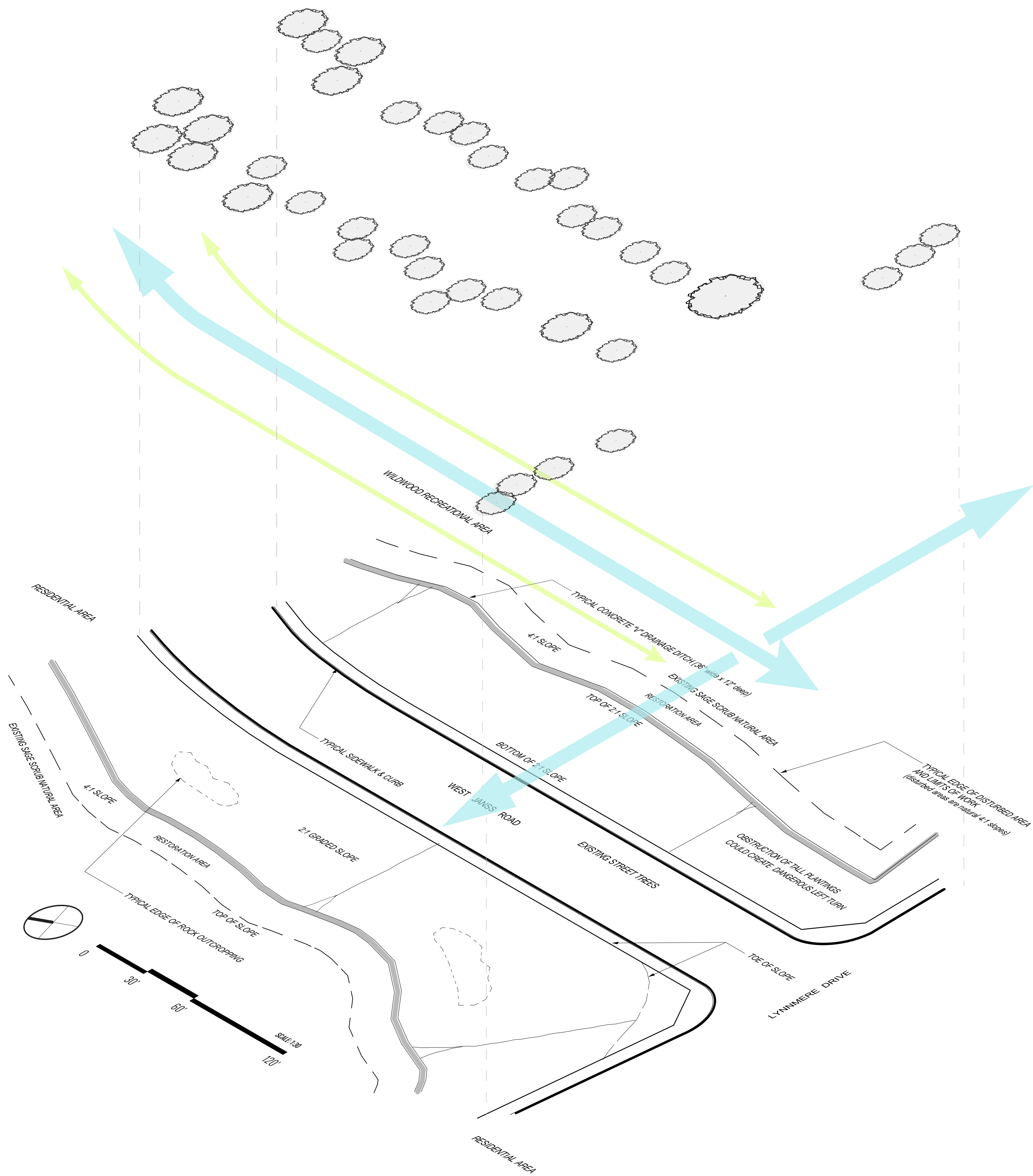
CEANOTHUS 'RAY HARTMAN' IS OFTEN CATEGORIZED AS BOTH A SHRUB AND TREE. GIVEN ITS MASSIVE SIZE, I'VE ALWAYS CLASSIFIED IT AS A TREE. I KEPT IT ON THE LOWER SLOPE TO PROVIDE PEDESTRIAN AND CIRCULATION-FRIENDLY COLOR.

MY SEED MIX IS QUITE SIMPLE AND I AIMED TO CHOOSE A LEGUME FOR ITS NITROGEN FIXING PROPERTIES, POPPIES FOR THEIR QUICK ROOTING (BUT MORE FOR THEIR BEAUTY) AND OTHER PLANTS KNOWN AS INDICATOR SPECIES OF THE SAGE SCRUB LIKE ERIOGONUM FASCICULATUM.

IN MY PLANTING LAYOUT I ATTEMPTED TO CREATE A MORE INTENTIONAL-APPEARING DESIGN OF MASSINGS ON THE LOWER SLOPE. ABOVE THE DRAINAGE CHANNNEL I CHOSE PLANTS THAT WERE NATIVE TO SAGE SCRUB AND ATTEMPTED TO PLANT THEM IN A NATURAL SCATTERING.

I DUG DEEP INTO THE ANALYSIS OF THIS SITE, RESEARCHING ITS SLOPE, COORDINATES, FIRE SUSCEPTIBILITY, AND OTHER FACTORS. ITS LOCATION IN A HISTORICAL FIRE PERIMETER IS CRITICAL INFORMATION AS A PLANT PALETTE IS CREATED. FIREWISE PLANTING OFTEN ADVISES THE PLANTING OF NATIVE PLANTS OVER NON-NATIVES AS THEY TEND TO TOLERATE FIRE MUCH BETTER. FOR EXAMPLE THE POINT AT WHICH MOST CEANOTHUS' LEAVES WILL IGNITE IS WELL OVER 60 SECONDS WHILE THE INVASIVE MUSTARD PLANT IS ONLY 3 SECONDS.\*

\*LAS PALITAS "LEAF BURN TIMES OF CALIFORNIA NATIVE PLANTS (& SEVERAL NON-NATIVE PLANTS)" [HTTPS://WWW.LASPILITAS.COM/CLASSES/FIRE\\_BURN\\_TIMES.HTML](https://www.laspilatas.com/classes/fire_burn_times.html)



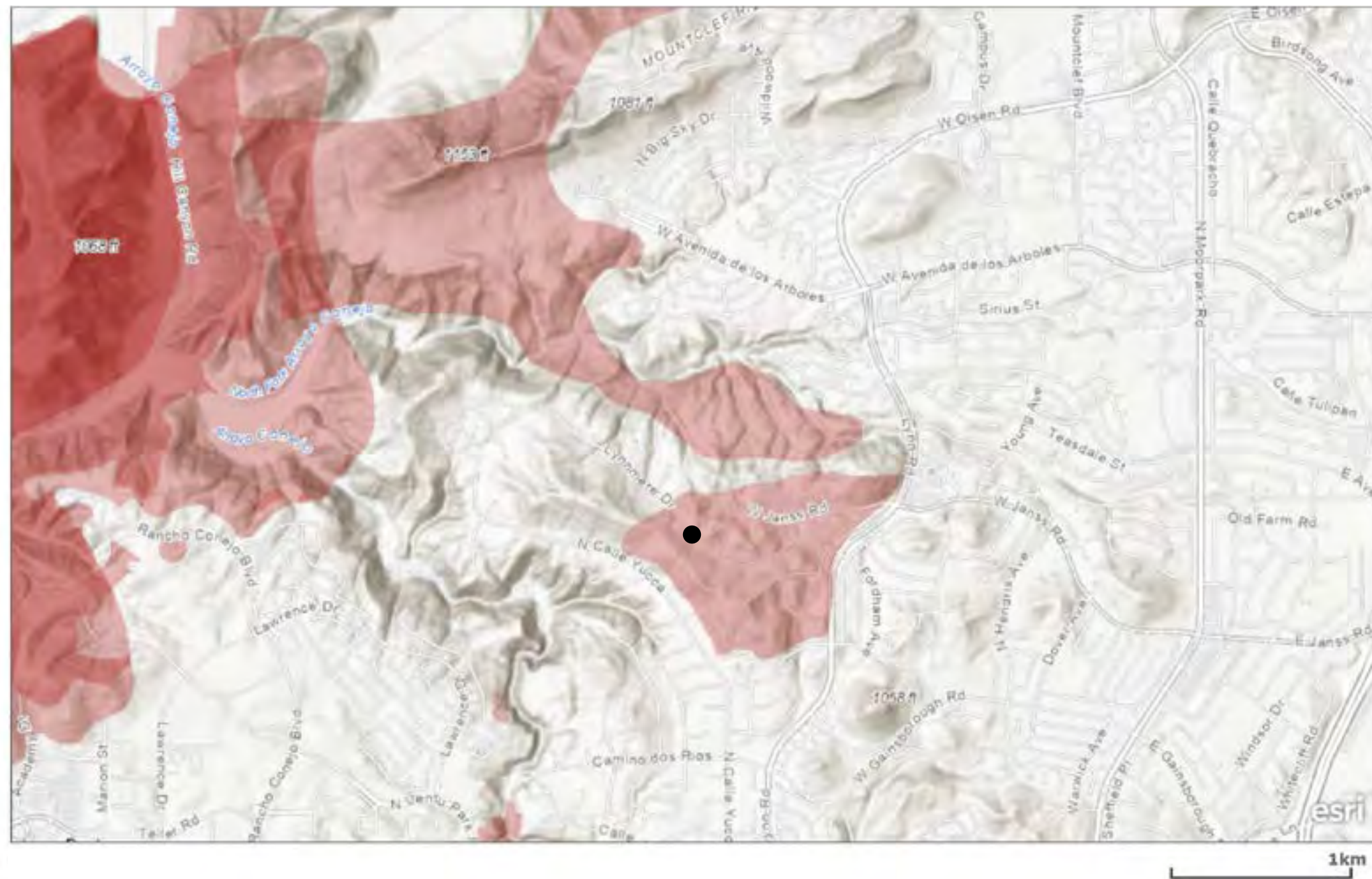
EXISTING STREET TREES

CIRCULATION

### LEGEND

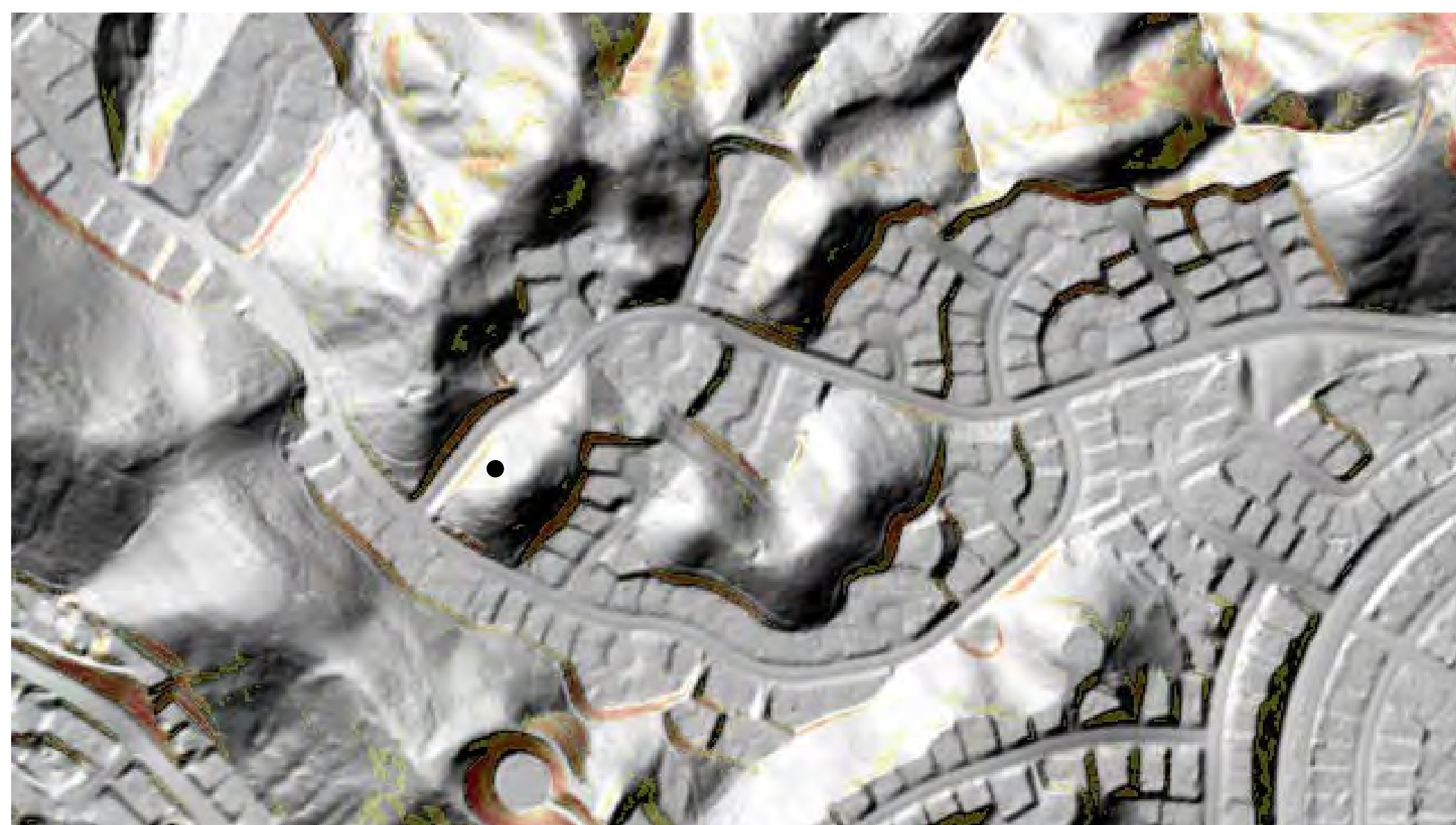
- EXISTING STREET TREES
- PEDESTRIAN CIRCULATION
- VEHICULAR CIRCULATION





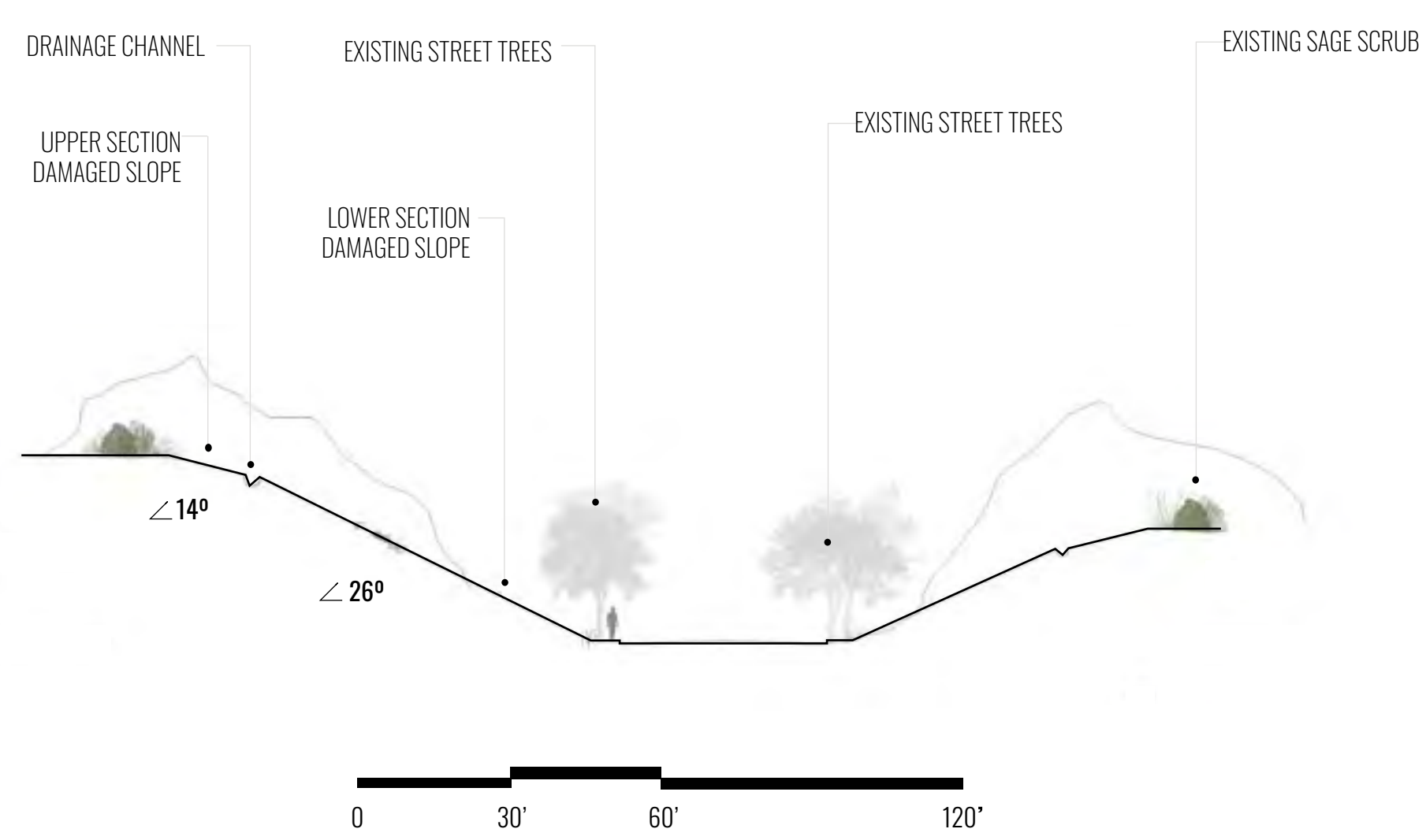
**FIRE PERIMETERS 1880 - PRESENT**

- SITE LOCATION
- BURN AREA
- BURN AREA OF MULTIPLE FIRES



**SLOPE ANGLE**

- SITE LOCATION
- 27-29°
- 30-31°
- 32-34°



**EXISTING SAGE SCRUB INDICATOR SPECIES**



**OPUNTIA LITTORALIS**



**OPUNTIA PROLIFERA**



**SALVIA MELLIFERA**

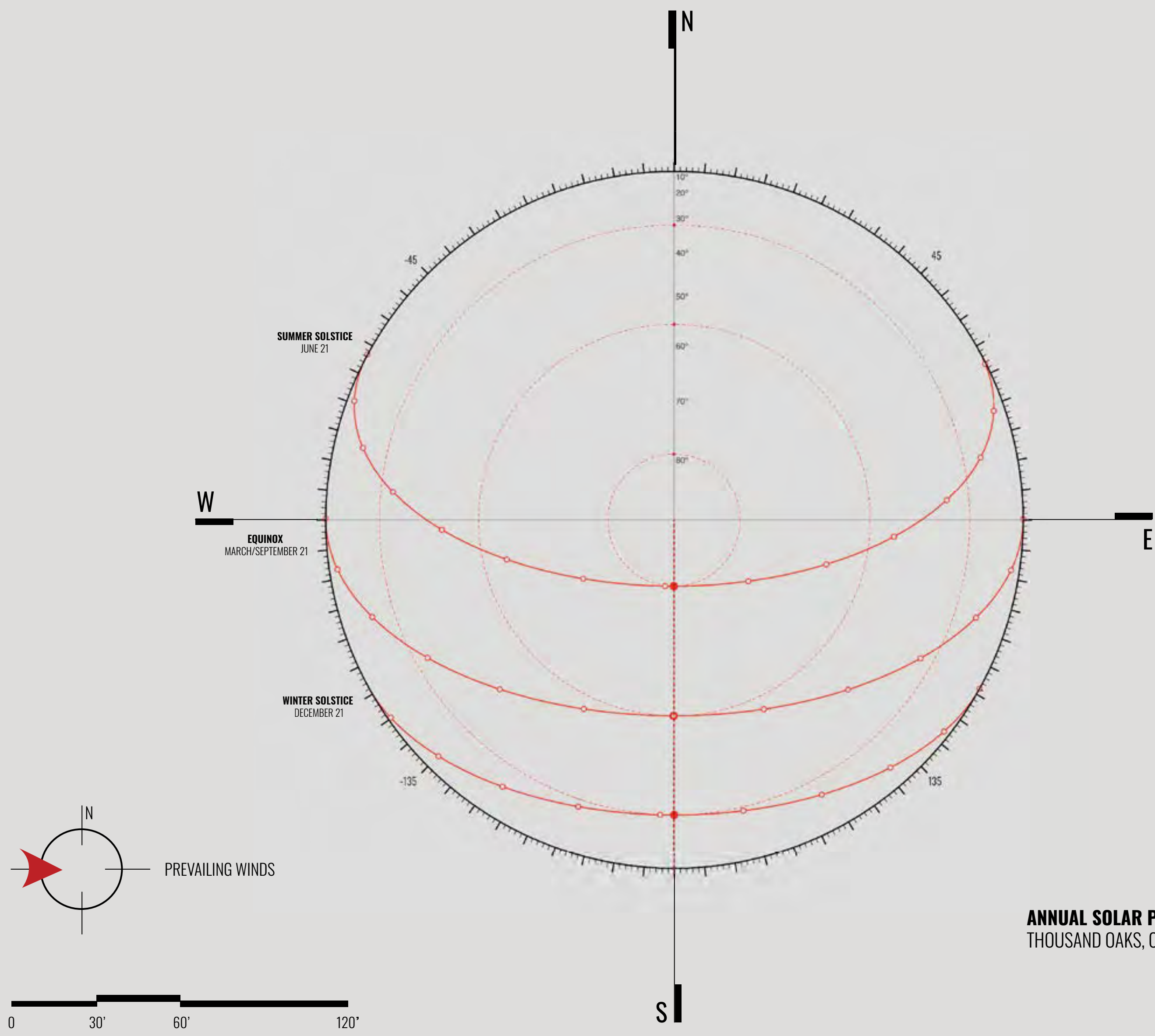


**ARTEMISIA CALIFORNICA**

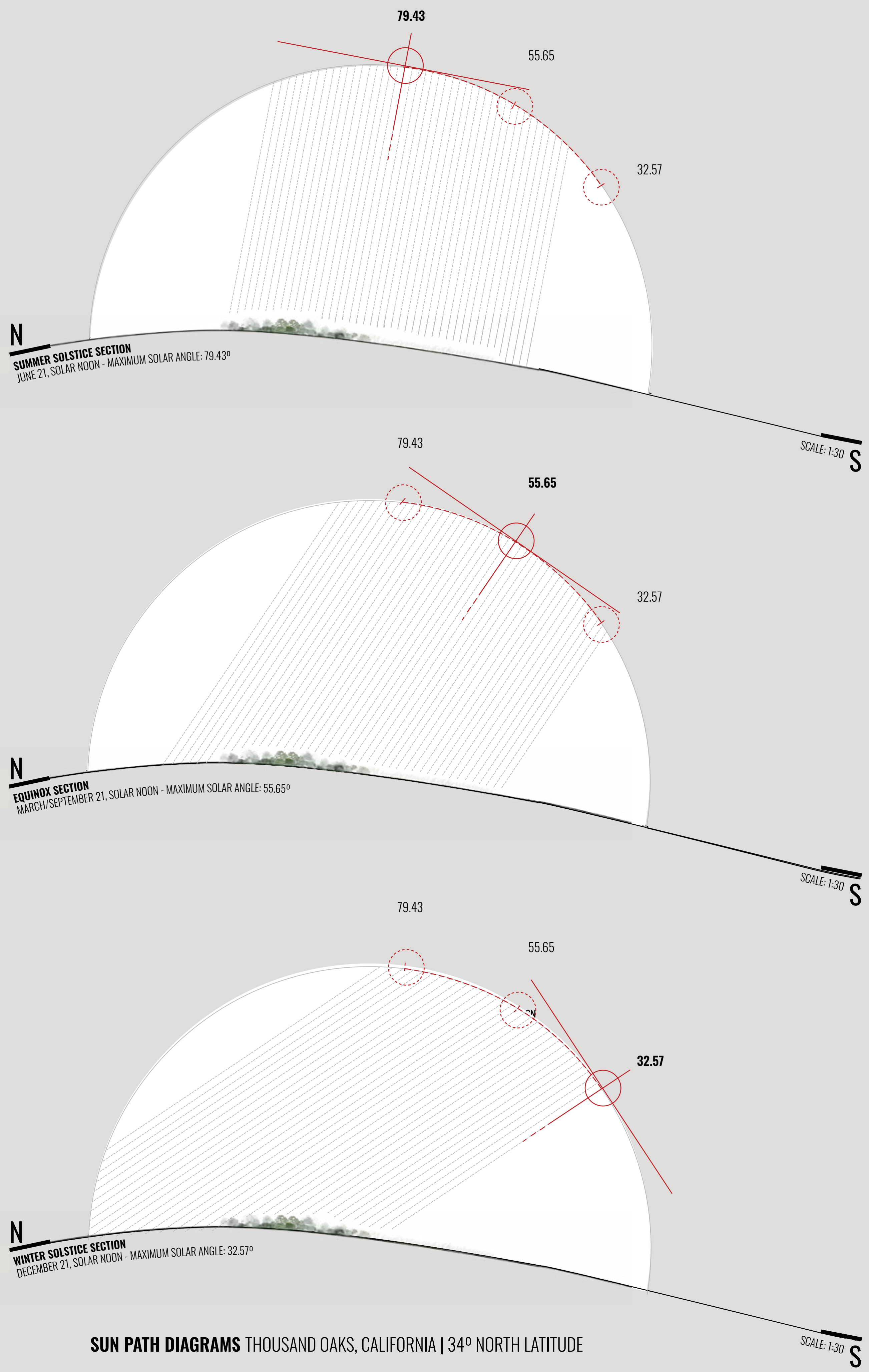


**ERIOGONUM FASCICULATUM**

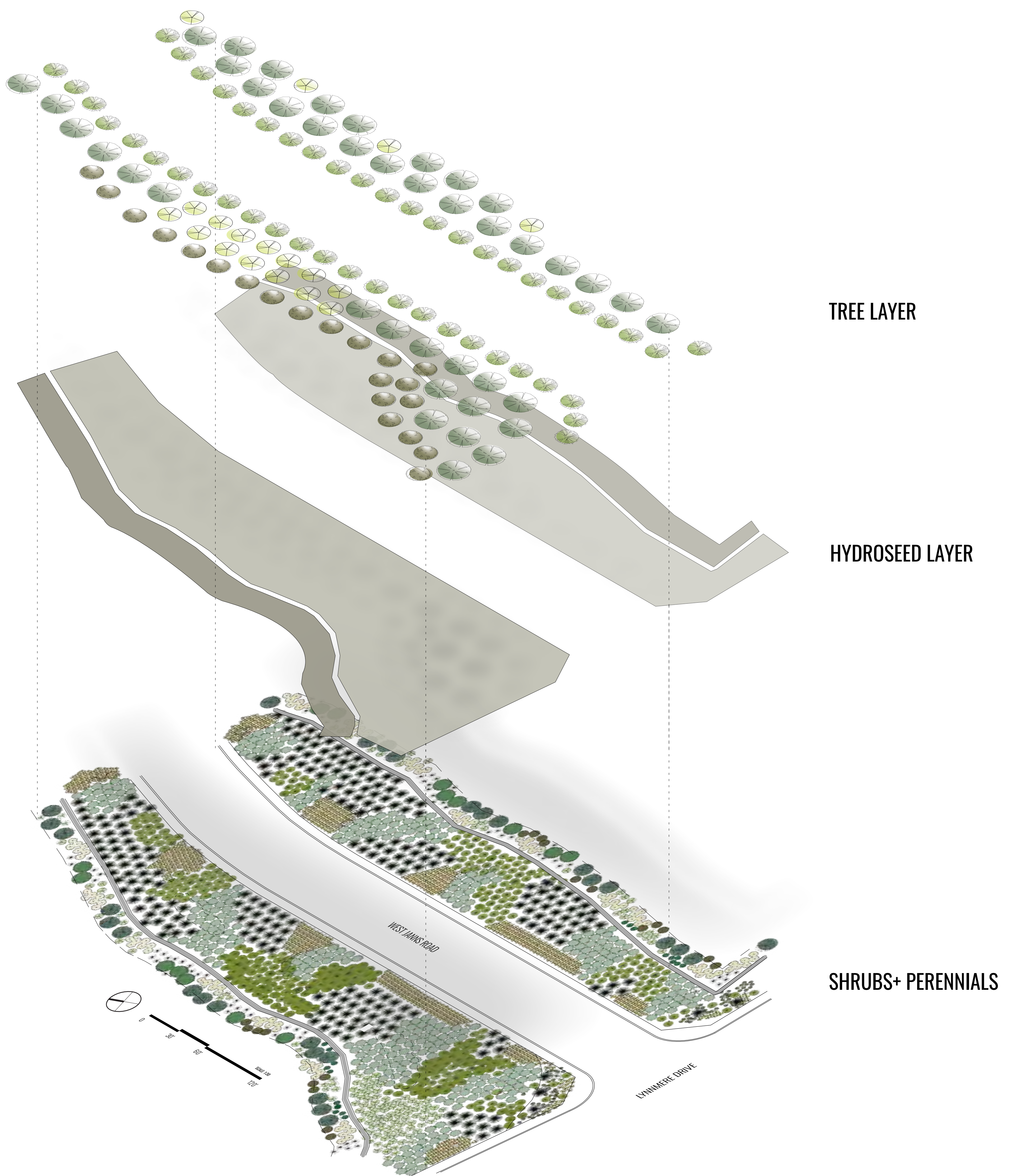




**ANNUAL SOLAR PATHS AND CORRESPONDING SECTIONS**  
THOUSAND OAKS, CALIFORNIA | 34° NORTH LATITUDE







TREE LAYER

HYDROSEED LAYER

SHRUBS+ PERENNIALS

**LEGEND**

- |  |                                     |                                      |   |                         |
|--|-------------------------------------|--------------------------------------|---|-------------------------|
| ERIOGONUM UMBELLATUM   | MUHLENBERGIA RIGENS                 | SALVIA CLEVELANDII "WINIFRED GILMAN" | PENSTEMON HETEROPHYLLUS "MARGARITA BOP" | SALVIA APIANA           |
| ACHILLEA MILLEFOLIUM   | SALVIA MELLIFERA                    | ERIOGONUM CROCATUM                   | ARTEMISIA CALIFORNICA                   | MAHONIA NEVINII         |
| OPUNTIA PROLIFERA (AKA CYLINDROPUNTA)  | ARCTOSTAPHYLOS GLAUCA "LOS ANGELES" | QUERCUS BERBERIDIFOLIA               | SAMBUCUS MEXICANA                       | CEANOTHUS "RAY HARTMAN" |
| <b>HYDROSEED</b> FESTUCA MICROSTACHYS    ESCHSCHOLZIA CALIFORNICA    ERIOGONUM FESCICULATUM    LUPINUS SUCCULENTUS |                                     |                                      |   |                         |





**ERIOGONUM UMBELLATUM**  
SULPHUR BUCKWHEAT  
0.5-1.5'H X 1-3'W  
WUCOLS: LOW



**MUHLENBERGIA RIGENS**  
DEER GRASS  
2-5'H X 3-6'W  
WUCOLS: LOW



**SALVIA CLEVELANDII** 'WINIFRED GILMAN'  
WINIFRED GILMAN SAGE  
3-5'H X 3-5'W  
WUCOLS: LOW



**ACHILLEA MILLEFOLIUM**  
WHITE YARROW  
2-3'H X 2-4'W  
WUCOLS: LOW



**ARTEMISIA CALIFORNICA**  
ERIOGONUM FASCICULATUM  
8-12'H X 3-6'W  
WUCOLS: LOW



**SALVIA MELLIFERA**  
BLACK SAGE  
3-6'H X 8-10'W  
WUCOLS: LOW



**PENSTEMON HETEROPHYLLUS MARGARITA BOP**  
MARGARITA FOOTHILL PENSTEMON  
1-2'H X 1-2'W  
WUCOLS: LOW



**SALVIA APIANA**  
WHITE SAGE  
3-4'H X 4-5'W  
WUCOLS: 0W



**ERIOGONUM CROCATUM**  
CONEJO BUCKWHEAT  
1-2'H X 2-3'W  
WUCOLS: LOW



**MAHONIA NEVINII**  
NEVIN'S BARBERRY  
3-6'H X 3-5'W  
WUCOLS: LOW



**OPUNTIA LITTORALIS**  
PRICKLY PEAR  
3'H X 6-9'W  
WUCOLS: LOWZ



**OPUNTIA PROLIFERA** (AKA CYLINDROPUNTA)  
COASTAL CHOLLA  
8'H X 3'W  
WUCOLS: LOW

## TREES



**SAMBUCUS MEXICANA**  
BLUE ELDERBERRY  
15-20'H X 15'W  
WUCOLS: LOW



**CEANOTHUS 'RAY HARTMAN'**  
RAY HARTMAN CALIFORNIA LILAC  
10-20'H X 10-20'W  
WUCOLS: LOW



**QUERCUS BERBERIDIFOLIA**  
SCRUB OAK  
6'H X 15'W  
WUCOLS: LOW



**ARCTOSTAPHYLOS GLAUCA 'LOS ANGELES'**  
LOS ANGELES BIG BERRY MANZANITA  
8'H X 3-6'W  
WUCOLS: LOW

## HYDROSEED MIX



**FESTUCA MICROSTACHYS** 20%  
SMALL FESCUE aka "3 WEEKS FESCUE"  
<1'H X SPREADING  
WUCOLS: LOW-MEDIUM



**ESCHSCHOLZIA CALIFORNICA** 30%  
CALIFORNIA POPPY  
1-1.5'H X 1-1.5'W  
WUCOLS: LOW



**FESTUCA CALIFORNICA** 20%  
CALIFORNIA FESCUE  
2-3'H X SPREADING  
WUCOLS: LOW



**LUPINUS SUCCULENTUS** 15%  
ARROYO LUPINE  
3-5'H X 3'W  
WUCOLS: LOW



**ERIOGONUM FASCICULATUM** 15%  
CALIFORNIA BUCKWHEAT  
1-3'H X 4-5'W  
WUCOLS: LOW-MEDIUM