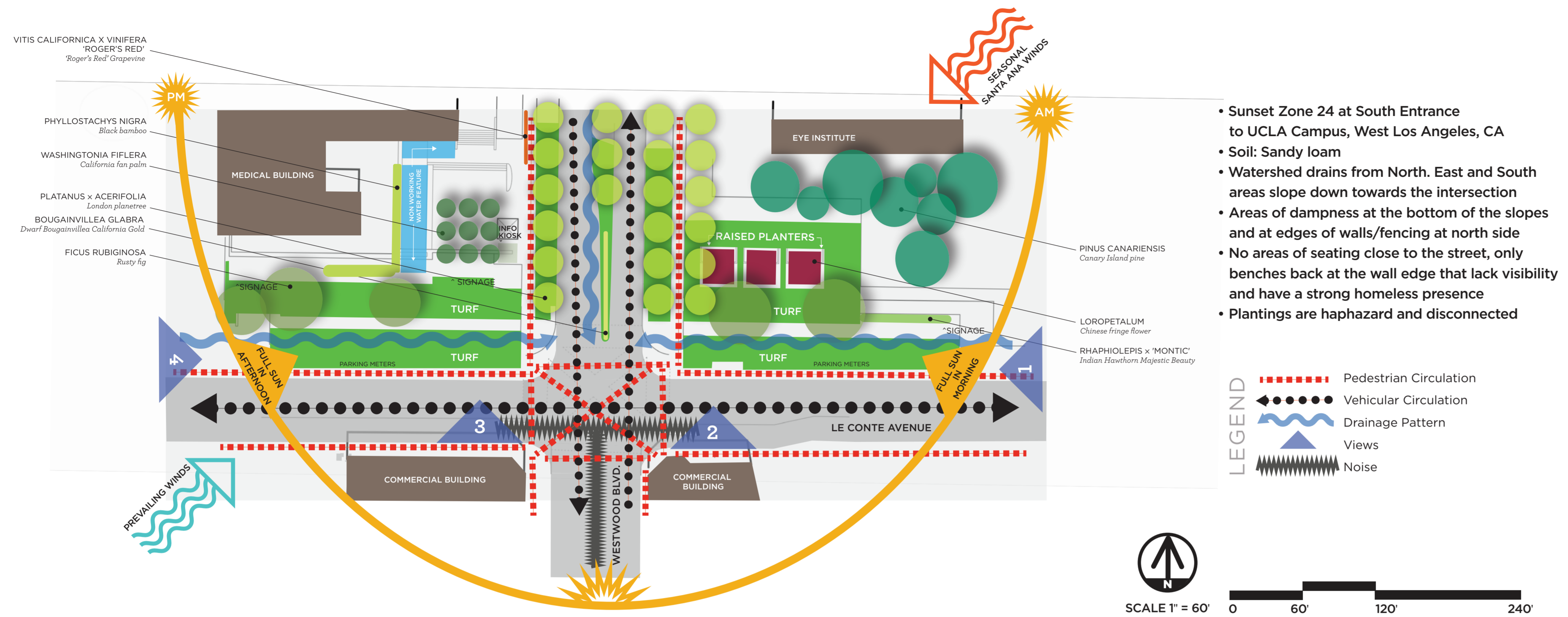


Analysis



- **Sunset Zone 24 at South Entrance to UCLA Campus, West Los Angeles, CA**
- **Soil: Sandy loam**
- **Watershed drains from North. East and South areas slope down towards the intersection**
- **Areas of dampness at the bottom of the slopes and at edges of walls/fencing at north side**
- **No areas of seating close to the street, only benches back at the wall edge that lack visibility and have a strong homeless presence**
- **Plantings are haphazard and disconnected**

Design Narrative

As it is now, this area does not reflect a dignified entrance to a renowned university. It looks like the entrance to a hospital and accompanying medical offices. It lacks a unique threshold crossing over from Westwood Village into the campus proper. The solution is to create a stronger entrance personality with new trees, updated, more unique hardscape, new planter boxes with seating, new seating with a shaded patio, and new back-lit signage accompanied with new plantings that reflect the personality of the university.

The *Plantanus x hispanica*, London Planetrees, along Westwood Blvd., will remain. They are a newer addition to the landscape, are doing well and present a strong allee leading into campus. I would add two more in the median towards Le Conte. I would remove all the unhealthy *Ficus rubiginosa*, and any other odd trees and shrubs in the work area, and replace with *Alnus rhombifolia* (White Alder) along the front facing fence area for continuity along Le Conte, and add *Lagerstroemia 'Natchez'*, a White Crape Myrtle, at the city sidewalk street edge. Under the Alders, St. Augustine turf would provide lawn area, and in extreme shady parts, plantings of *Glechoma hederacea 'Variegata'* would cover extra dark and damp spots subtly melding into the St. Augustine.

In the median before the two new *Plantanus x hispanica*, signage would be installed. The letters U C L A, in a metallic gold finish, backlit at night, would be visible on both sides for autos coming or going. They would be raised from the ground just enough to incorporate perennials underneath as a soft base in UC colors.

On the east side, where the high brick planter boxes were filled with *Loropetalum*, and more *Ficus rubiginosa* trees along the sidewalk, the plan would be to completely clear that area, re-grade and add terraced seating at the back edge with a flat patio and additional tables and chairs (permanently attached, most likely) for the usability as a meeting space, an outside class space for students utilizing amphitheater style seating in the terraces, or a convenient shady picnic spot for outdoor eating/gathering. There is no area in nearby Westwood Village to comfortably sit outside and eat unless you are a customer of a restaurant. This could be a convenient place to meet before class or the theater, or a place to attend an outdoor class while studying the flora

of campus or visiting the UCLA Mildred E. Mathias Botanical Garden. *Ginkgo bilobas* would be added in this quadrant to provide a shade canopy and interesting texture. *Euonymus fortunei 'Emerald Gold'* would border at one end, with *Rosmarinus officinalis 'Tuscan Blue'* at the opposite side. From this patio, a paver walkway connecting to the Westwood Blvd. side would be bordered in a low grass, *Sesleria autumnalis*, and near the back wall *Lysimachia nummularia*, a bright acid yellow-green ground cover, would sparkle in the damp, part sun/shady area. Behind the terraced seating more *Rosmarinus officinalis* would grow upright and provide a wonderful scent with bright blue flowers in the summer.

New walkways with added planter boxes incorporating seating would be installed in the full sun area along Le Conte. Trimmed in the traditional UCLA brick, the two-toned aggregate cement would add a contemporary feel and an additional entrance from the street, one on each side, for easy metro/pedestrian/ auto drop-off. The walkways are angled to give a more interesting meander through the space. The Alders and Myrtles would create more ambience and shade, and in the fall provide beautiful color. The planter boxes would be protected by an edging to discourage 'paths of desire' traffic through the perennial beds.

Recently, I learned that the colors of the University of California, blue and gold, were chosen because the fields around the first campus (in 1868, most likely Berkeley) reportedly were replete with blue lupines and golden poppies. (Each university in the UC system has different versions of blue and gold.) That became the basis of my color palette for the perennials to be planted in the new planting beds. Yellow and blue perennials would be mixed and some planters bordered with *Buxus microphylla* and *Pittosporum tibia 'Shinna'* for accent and color when the perennials go into seasonal decline. *Anigozanthos*, *Achillea x 'Moonshine'*, *Lupinus luteolus*, *Diplacus longiflorus* will represent the UC gold, while *Nemophila menziesii*, *Salvia patens*, *Lupinus perennis*, *Felicia amelloides*, *Ceanothus 'Concha'* will represent UC blue. Adding annual seeds of California natives in the yellow and blue color palette throughout could fill in seasonally, hopefully reseeding themselves. The balance of gold, blue and different greens will make this area look alive and spirited.

Views



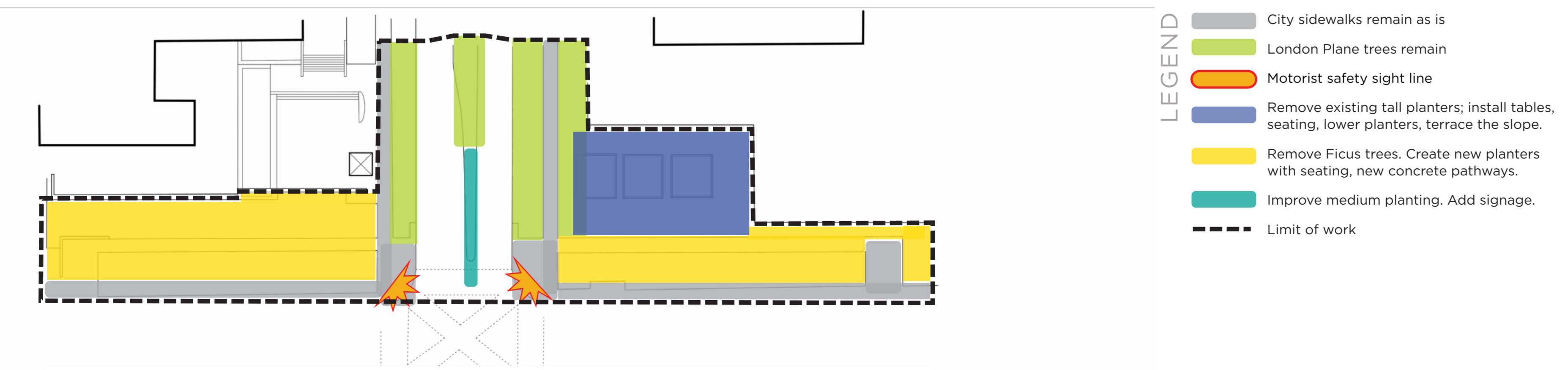
View 1 is at the highest elevation point on Le Conte as you enter Westwood from the north. Signage is blocked by parked cars and barely visible to drivers. Landscaping is sparse.

View 2 is the view from Westwood Blvd at the most busy intersection before you enter campus. Pedestrians and motorists have a hard time seeing any campus demarcation. Also this side is the view from the Westwood Playhouse, which adds to confusion about parking and access.

View 3, similar to View 2, but downhill from the Westwood entrance does give you a view of signage away from the street. Still competing with bus lines, autos and parking lot entrances, the area is chaotic, with low visibility as far as a separation between Westwood village and the actual campus.

View 4, approaching from the south, is the weakest view. It is at the bottom of the slope and all campus demarcation is blocked by trees, parked cars with poor city signage near parking meters. Lawn and trees are the only landscaping.

Area Use/Bubble Diagram

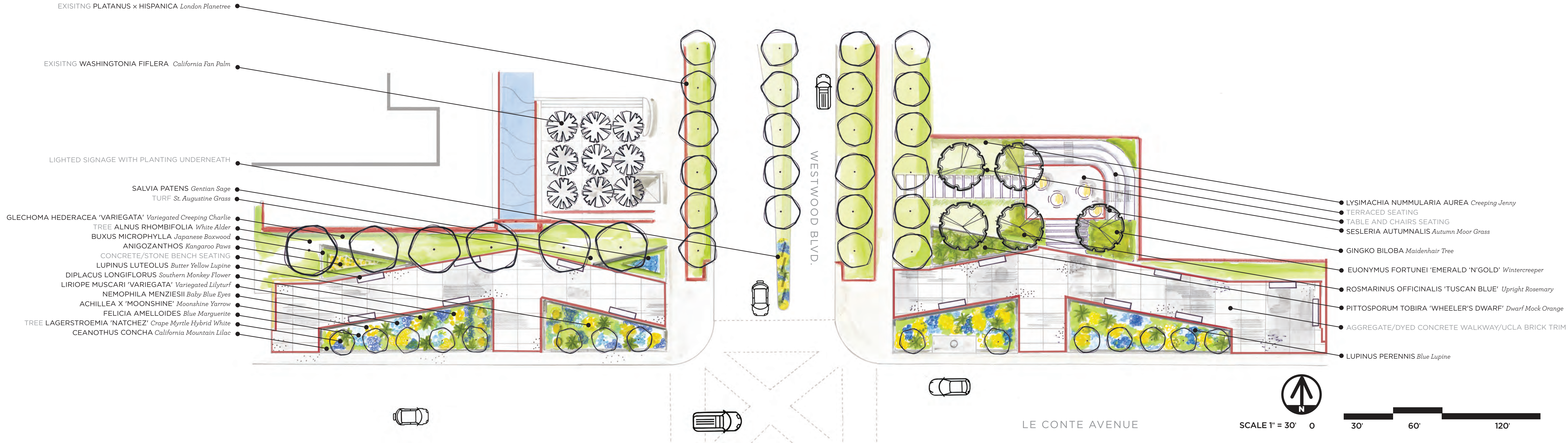


Concepts



UCLA South Entry Remodel	Intersection of Le Conte and Westwood Blvd.	Terri Larronde	Landscape Design 5 Planting Design		Instructor: Stephen Davis
	Los Angeles, CA 90024	June 10, 2020	Project 3	Sheet 1 of 2	

Planting Design Plan



Plant Palette

EXISTING TREE	PROPOSED TREES	SHRUBS					TURF				
<i>Platanus x hispanica</i> London Planetree 70'-85' high, 50'-70' wide WUCOLS High, Moderate	<i>Alnus rhombifolia</i> White Alder 50'-90' high, 40'-70' wide WUCOLS High	<i>Ginkgo biloba</i> Maidenhair Tree 65'-115' high, 30'-50' wide WUCOLS Moderate	<i>Lagerstroemia 'Natchez'</i> Crape Myrtle Hybrid White 20'-25' high, 15'-25' wide WUCOLS Moderate	<i>Buxus microphylla</i> Japanese Boxwood 24'-48' high, 24'-48' wide WUCOLS Moderate/Medium	<i>Euonymus fortunei 'Emerald 'n' Gold'</i> Wintercreeper 12'-24' high, 36'-48' wide WUCOLS Moderate	<i>Liriope muscari 'Variegata'</i> Variegated Lilyturf 20" high, 18" wide WUCOLS Moderate	<i>Sesleria autumnalis</i> Autumn Moor Grass 12"-24" high, 12"-24" wide WUCOLS Moderate	<i>Pittosporum tobira 'Shima'</i> Cream de Mint™ Dwarf Mock Orange 20"-24" high, 24" wide WUCOLS Moderate	<i>Rosmarinus officinalis 'Tuscan Blue'</i> Upright Rosemary 4'-6' high, 4'-5' wide WUCOLS Moderate, Low	<i>Stenotaphrum secundatum</i> St. Augustine Grass 6" high, 12" runners WUCOLS High	
PERENNIALS			GROUNDCOVERS								
<i>Achillea x 'Moonshine'</i> Moonshine Yarrow 1'-2' high, 2' wide WUCOLS Low	<i>Lupinus luteolus</i> Butter Yellow Lupine 1'-5' high WUCOLS Low	<i>Anigozanthos</i> Kangaroo Paws 2'-4' high, 1'-2' wide WUCOLS Moderate	<i>Diplacus longiflorus</i> Southern Monkey Flower .33'-3' high WUCOLS Low	<i>Nemophila menziesii</i> Baby Blue Eyes 6" high, 5" wide WUCOLS Low	<i>Salvia patens</i> Gentian Sage 2' high, 2' wide WUCOLS Low, Moderate	<i>Ceanothus Concha</i> California Mountain Lilac 4' high, 4' wide WUCOLS Low	<i>Felicia amelloides</i> Blue Marguerite 12"-18" high, 2' wide WUCOLS Low	<i>Lupinus perennis</i> Blue lupine 3'-5' high, 1.5' wide WUCOLS Moderate	<i>Lysimachia nummularia Aurea</i> Creeping Jenny 3" high, 12" runners WUCOLS Wet site tolerant	<i>Glechoma hederacea 'Variegata'</i> Variegated Creeping Charlie 8" high, 6" wide WUCOLS Moderate, Low	

UCLA South Entry Remodel	Intersection of Le Conte and Westwood Blvd. Los Angeles, CA 90024	Terri Larronde June 10, 2020	Landscape Design 5 Planting Design Project 3 Sheet 2 of 2	Instructor: Stephen Davis
---------------------------------	---	--	---	-------------------------------------