

DESIGN NARRATIVE

SITE:
The North side of the intersection at Le Conte & Westwood Boulevard is the South entrance of UCLA yet is without distinction. It is also the entrance of the UCLA Medical Center which was not developed until the 1950's, with the Ronald Reagan Hospital being completed in 2009. Prior to this, the site was an agricultural field sitting at a distance below the original 1930's Italian Romanesque campus on a hill.

Both streets have heavy vehicular and pedestrian traffic. The East and West sides are flanked by historic brick walls with inset ballustrade and a UCLA sign. Both walls have *Pinus canariensis* in the background and are distinct landmarks for pedestrians approaching on Le Conte. Old growth *Ficus rubiginosa* are on both sides as well but the Le Conte parkways have no street trees. Both areas are dominated by turf. The East side has a moderate slope to the West and South with three large brick planters. The West side has a brick wall and terminates to the east at an opening in the wall separating the patio from the street. The seating is along a long flat wall and creates an uninteresting monolith with no intimacy or human scale. The building's patio pool emerges through this opening into the area of work and is a favorite seating spot. The brick wall to the west of the pool reveal has insignificant yellow flowers planted underneath which calls for a more dramatic floral display.

On the Northwest side of the intersection pedestrians seem to prefer the city sidewalk. On the East side there is more pedestrian traffic on the UCLA sidewalk. There are areas of concealment behind the large planters on the East and behind the historic brick wall on the West with seating. Walkways on Le Conte are unpleasant due to sensory exposure to Le Conte traffic. There is no shade during the hottest hours of summer days as most of the trees are to the North of the site.

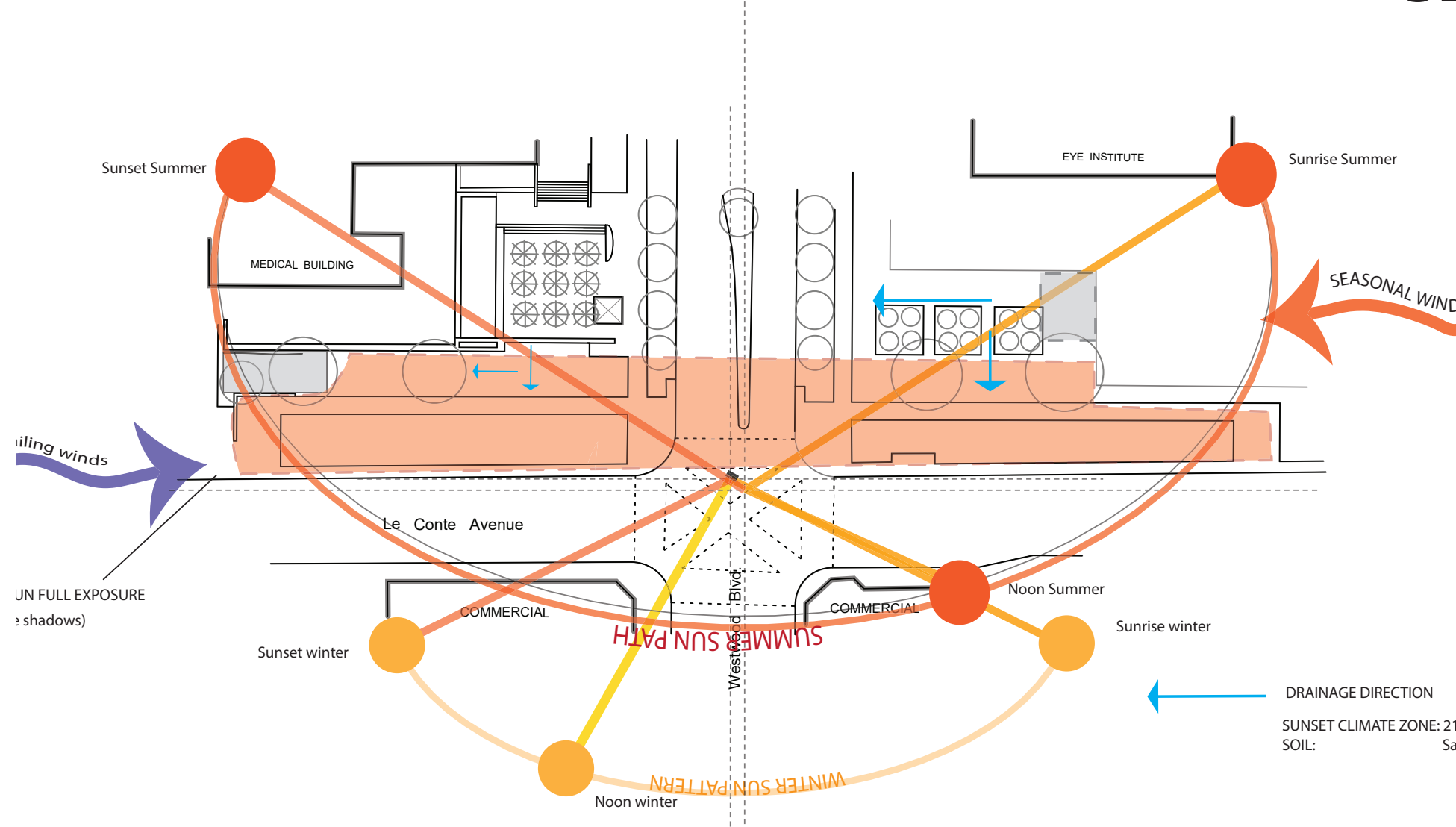
The lack of trees in the median on Westwood breaks the continuity on the boulevard from both directions and does not provide a pronounced entry. The architectural bones of a grand entry are present and there is an opportunity to celebrate the entrance while addressing these issues through a contemporary landscape.

DESIGN OBJECTIVES:
In the interest of creating a distinct vehicular and pedestrian for the main UCLA entrance, improving the pedestrian experience and providing inviting seating and gathering areas, the planting plan brings the campus experience to the streetscape. Plants are limited to the UCLA palette, concentrating on the new Mediterranean planting approaches of UCLA Luskin Center and other renovated areas. The planting design pays homage to the symmetry found on campus and in the Romanesque architecture through rhythm with subtle changes to create sequence and incident. The slope on the west provides reveals the beauty of the tonal and textural variations in the foliage of shrubbery as they ascend towards the brick planters. Shrub varieties that kept a compact rounded shape were favored as a nod to the formal Italian garden styles without requiring extra maintenance.

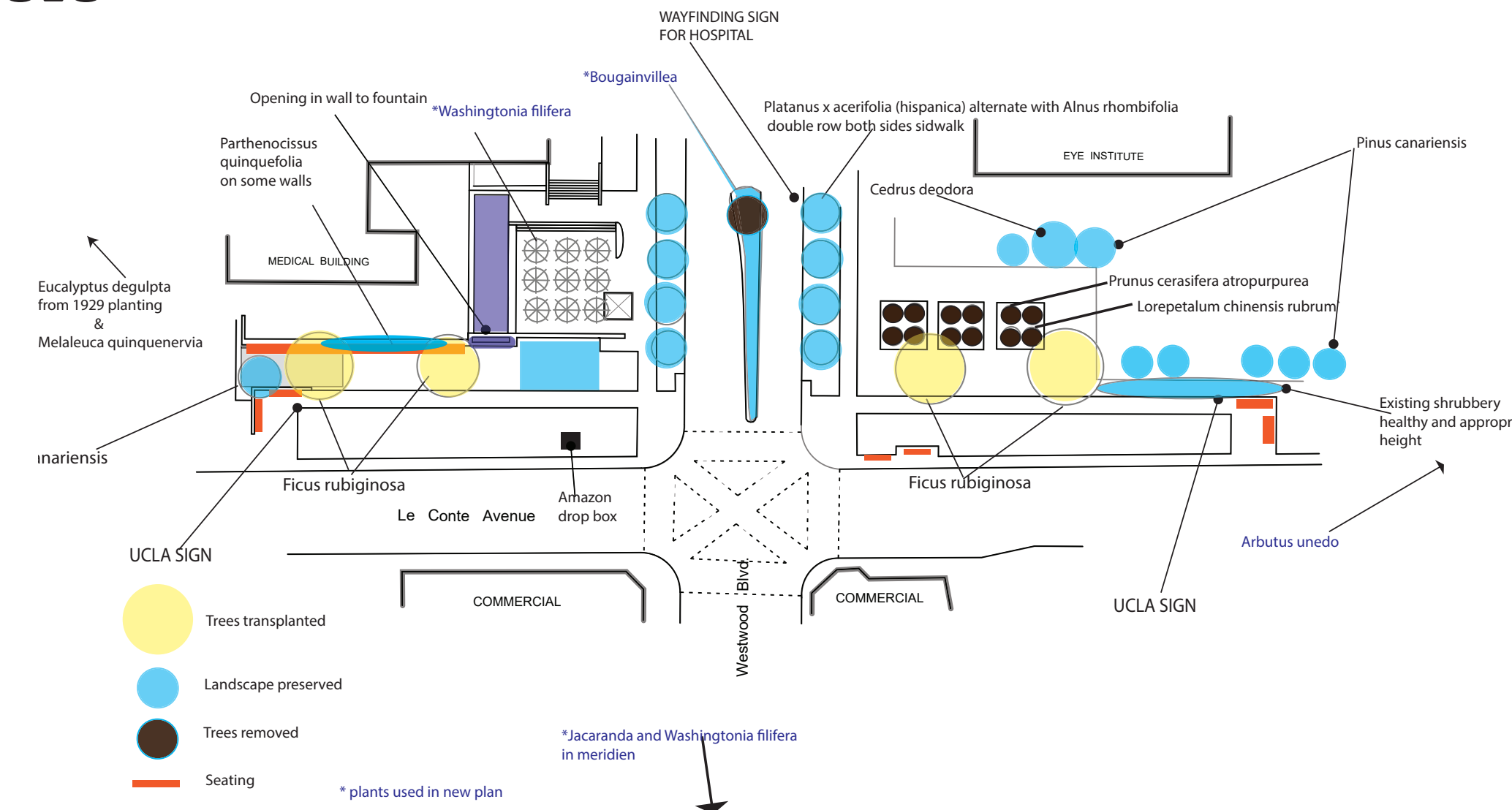
Connections are made on the Westwood approach by continuing the median plantings of California fan palms and Jacarandas. The fan palms also tie into the plaza visible behind the brick wall. Visibility to the flanking historic walls and into the new landscaping is emphasized by transplanting the *Ficus rubiginosa* to the large parkway where they provide much needed shade. They are joined by an alley of *Arbutus marina* that offer pedestrian scale shade and still allow visibility to the Geffen Playhouse. Existing street trees along Westwood of white alder and London plane trees are preserved for continuity beyond the area of work and the ubiquitous Boston ivy on the walls is preserved. Seating is broken into smaller livingrooms, most notably on the west side with new planters, which allows people to enjoy food truck fare in small groups. On both sides Mediterranean shrubs create subtle barriers to guide pedestrians and visitors from the walkways to seating areas. The area behind the eastside planters is invigorated by bougainvillea which makes a connection to the median understory. The parkway now offers a pleasant transition from the car to the walkways and to parked food trucks with plantings and dg. New and old lawn area are planted with TifTurf, a bermuda hybrid that is durable and uses 30% less water.

The new landscape brings the campus experience to the gateway and celebrates UCLA's past and future as it welcomes the pedestrian and vehicular level with grand street scale and intimate human scale landscaping.

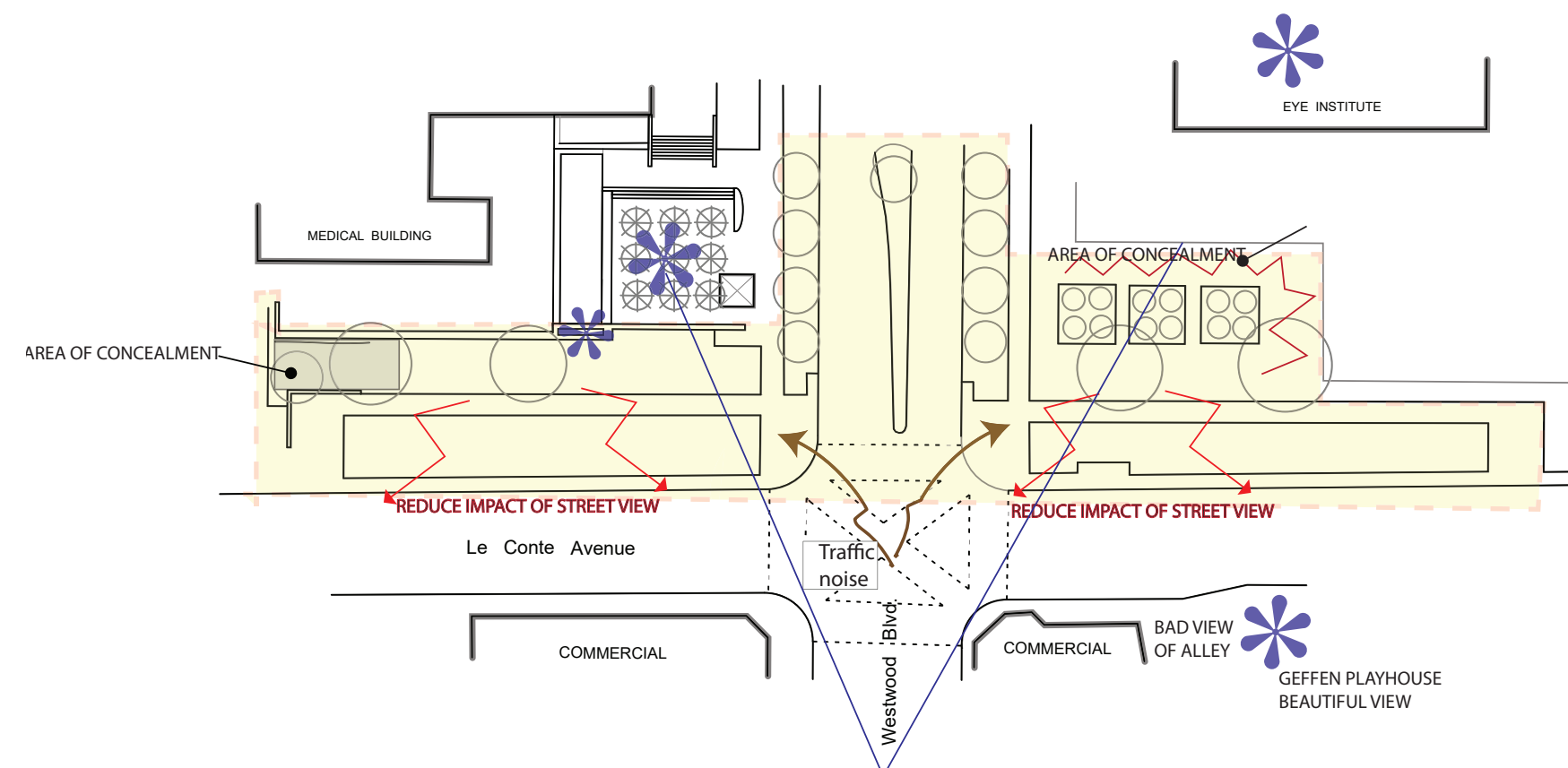
SITE ANALYSIS



SUN/SHADE/WIND



INVENTORY: SEATING & PLANTS



OPPORTUNITIES & CONSTRAINTS

UCLA ENTRANCE

LeConte Avenue & Westwood Boulevard
Los Angeles, California



Scale: 1" = 120'-0"

PHOTOS



Eastside: Large brick planters, slight slope to the south and north. Old growth *Ficus rubiginosa* on both sides.



Aerial of Eastside: Slope is clearly visible with the mid century modern Stein Eye Center in the background. Old growth *Pinus canariensis* in parking lot visible as well.



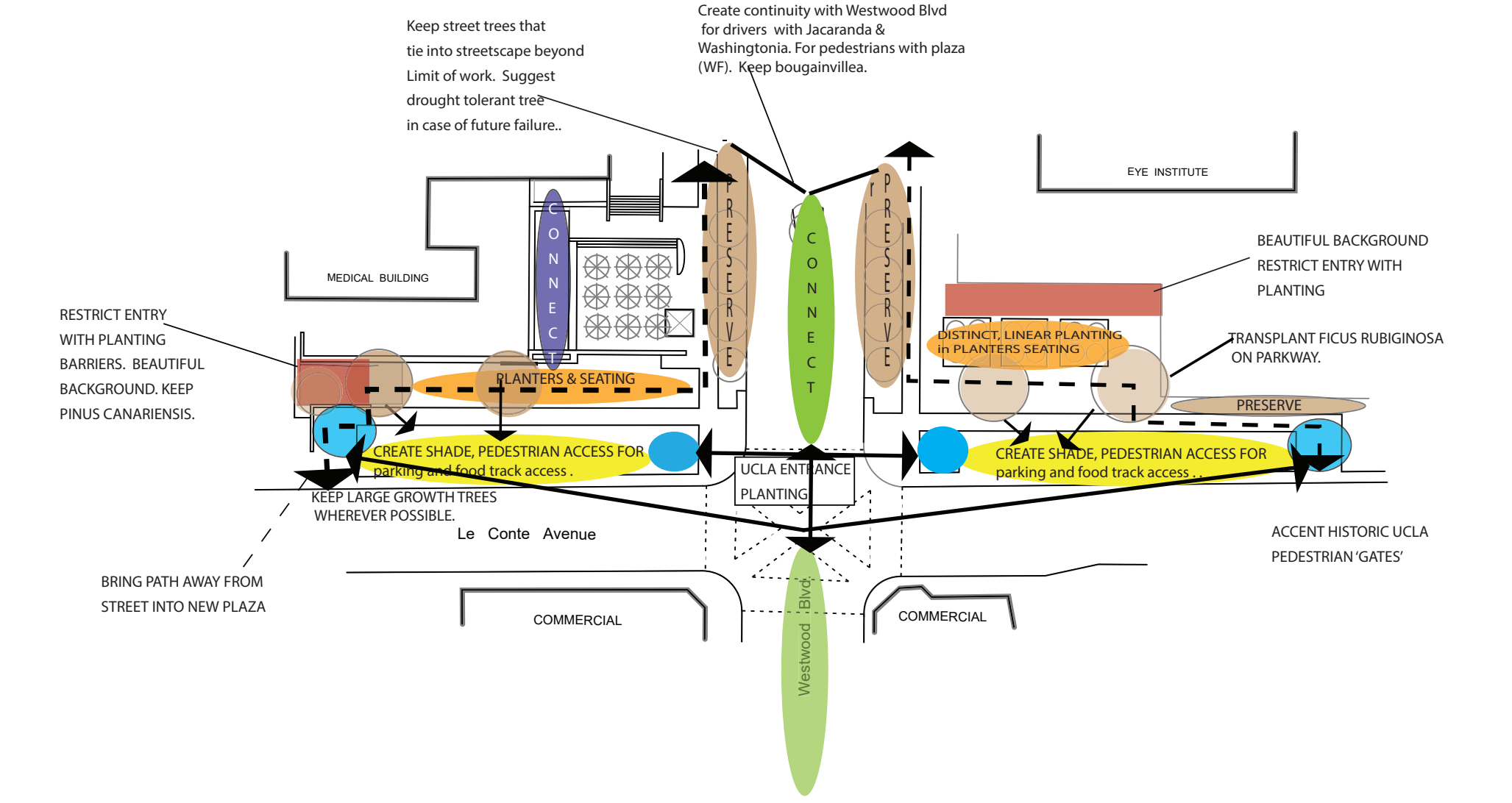
Westside fountain: Seating runs along the wall and terminates at the wall where the fountain emerges through the wall. Views of this striking plaza will be accentuated with plantings and a path bringing visitors



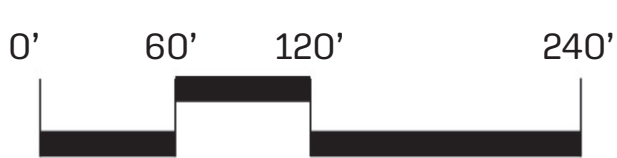
INSPIRATION: A massing of Pride of Madeira punctuated by Tiny Towers Italian cypress is one example of the inspiration provided by the UCLA Mediterranean campus landscape.



Westside sign: Lettering on the traditional brick wall with low growing yellow flowers. The sign is not noticeable from the street and would benefit from a stronger planting plan to draw attention in this direction.



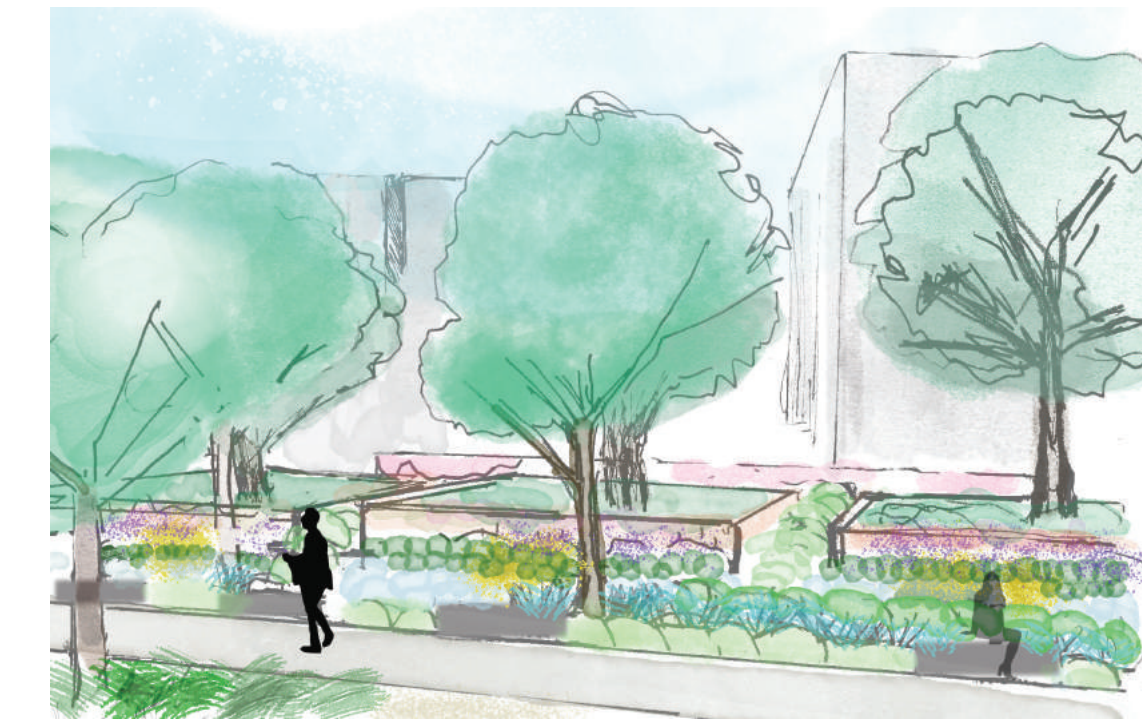
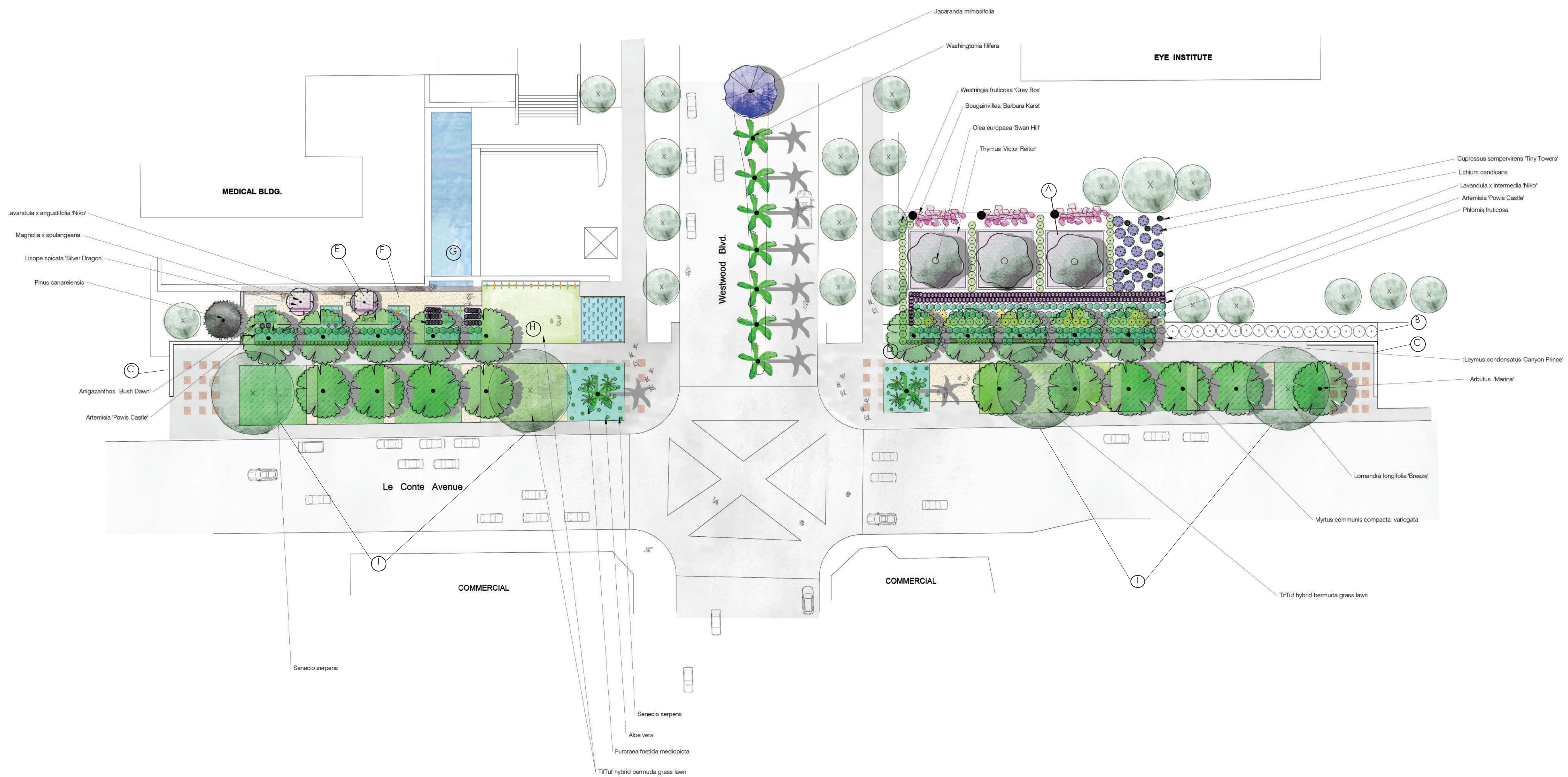
AREA USE DIAGRAM



ALYSSA LEAL MOFFITT

LD5 Planting Design Spring 2020
Instructor: Stephen Davis

CONCEPTUAL PLANTING PLAN



WEST SIDE OF INTERSECTION ON LE CONTE AVENUE

Planters are filled with creeping thyme that flower winter through spring and accentuates the gnarly olive trees. Individual benches line the sidewalk separated by fragrant wormwood and low myrtle hedging. The Blue purple of Pride of Madeira cones and lavandin contrast with bright yellow Jerusalem sage and brings Mediterranean seasonal color to the pedestrian experience.

- (A) Existing planters with Olive Trees.
- (B) Existing shrubs preserved.
- (C) Historic balustrade wall with sign
- (D) New benches
- (E) New planters with seating
- (F) New D.G. path
- (G) Fountain
- (H) Existing lawn preserved.
- (I) Transplanted Ficus rubiginosa
- (J) New Pinus canariensis.



EAST SIDE INTERSECTION LE CONTE AVENUE: DG Paths and two new planters add seating and divide the formerly long monolith of seating into more intimate rooms. The fountain is accentuated by the path and the new enclosure created by tall, bright yellow kangaroo paws and springs of lavender. Fragrant wormwood lines the flowering plantings that provide a year round display of airy, lacy leaves.

PLANT PALETTE

WEST SIDE	MERIDIEN	PARKWAY	SHRUBS	SUCCULENTS	EAST SIDE



Scale: 1" = 30'-0"



UCLA ENTRANCE
LeConte Avenue & Westwood Boulevard
Los Angeles, California

ALYSSA LEAL MOFFITT
LD5 Planting Design Spring 2020
Instructor: Stephen Davis