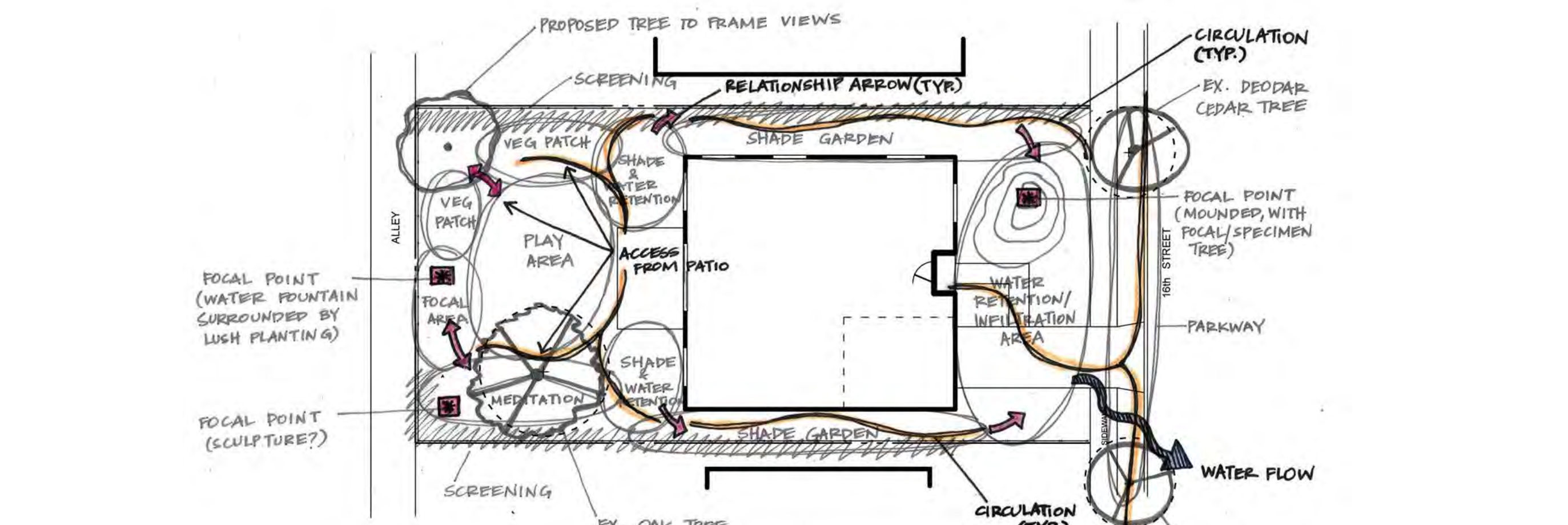
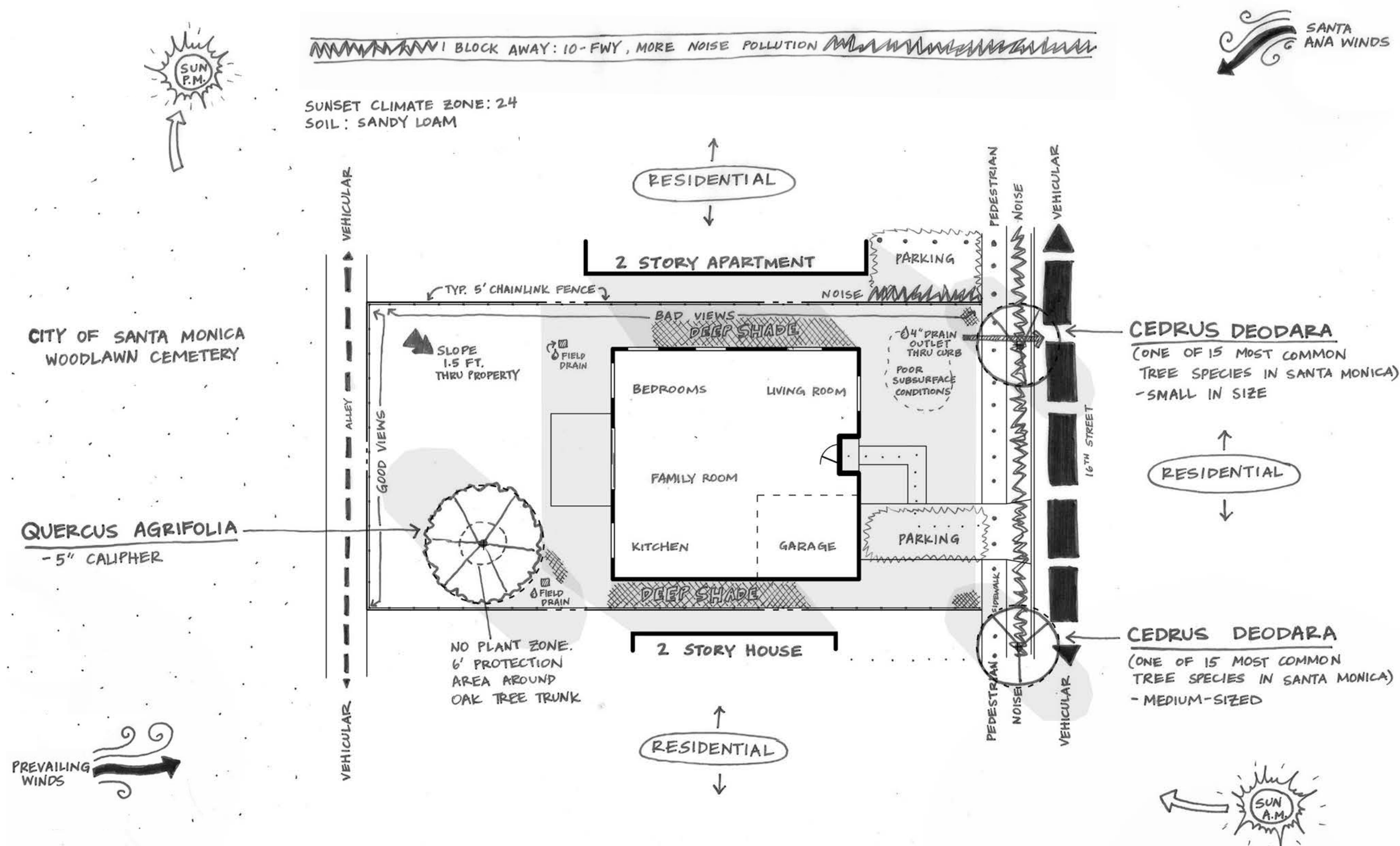


# SITE ANALYSIS & BUBBLE DIAGRAM



# DESIGN NARRATIVE

Located at 1834 16th Street in Santa Monica, CA, the residence shown is home to a young couple with an 8 year old daughter and a dog (a Daschund). After analyzing the site, it was apparent that the best views were toward the cemetery past the backyard, and alternatively, much privacy screening was needed to counteract the two story apartment building on the western side of the garden. Other design prompts included: planting a shade garden for the areas of deepest shade (along the side yards), protecting - and taking advantage of - the beautiful existing Oak Tree in the backyard, making a kitchen vegetable garden, designing a water infiltration/retention area (most beneficial where the water naturally drains on the site), and creating a quiet meditation area for the parents.

Using the existing *Quercus agrifolia* as an inspirational starting point for the design, I chose to design a woodland centered around a central meadow (or lawn) made of *Carex praegracilis* for the daughter and dog to play. For color inspiration, I chose to focus on vivid eye-catching colors - fun for the family to look at - such as blues, purples, and pinks, with their complementary colors orange and yellow. This informed the plant selection as well as the color pairings during various seasons of the year. However, in the meditation area - a wooden deck with a water feature at one end - the plant colors were more muted: green leafy vegetation with white or light pink flowers as well as plants with yellow in the form of their berries, such as *Ribes aureum gracillimum*. This design choice, in combination with the cool shade provided by the Oak as well as the fragrant scent to many of the plants placed in this area, contributes to the overall calming retreat-like feel of the meditation/relaxation corner.

Another feature of the garden is a vegetable patch with raised planting beds. This area is not only for the parents to use for the family's food, but also serves as an educational space for the daughter to learn about sustainability and nature. This concept is emphasized with the large space for the daughter to inhabit under the Avocado Tree - her own retreat area, complete with a swinging chair hanging from one of the tree's branches. The foodscape of this residential landscape does not end there; plants with other herbal or edible interest were placed throughout the site, making the plants a feast for both one's eyes and stomach. Examples

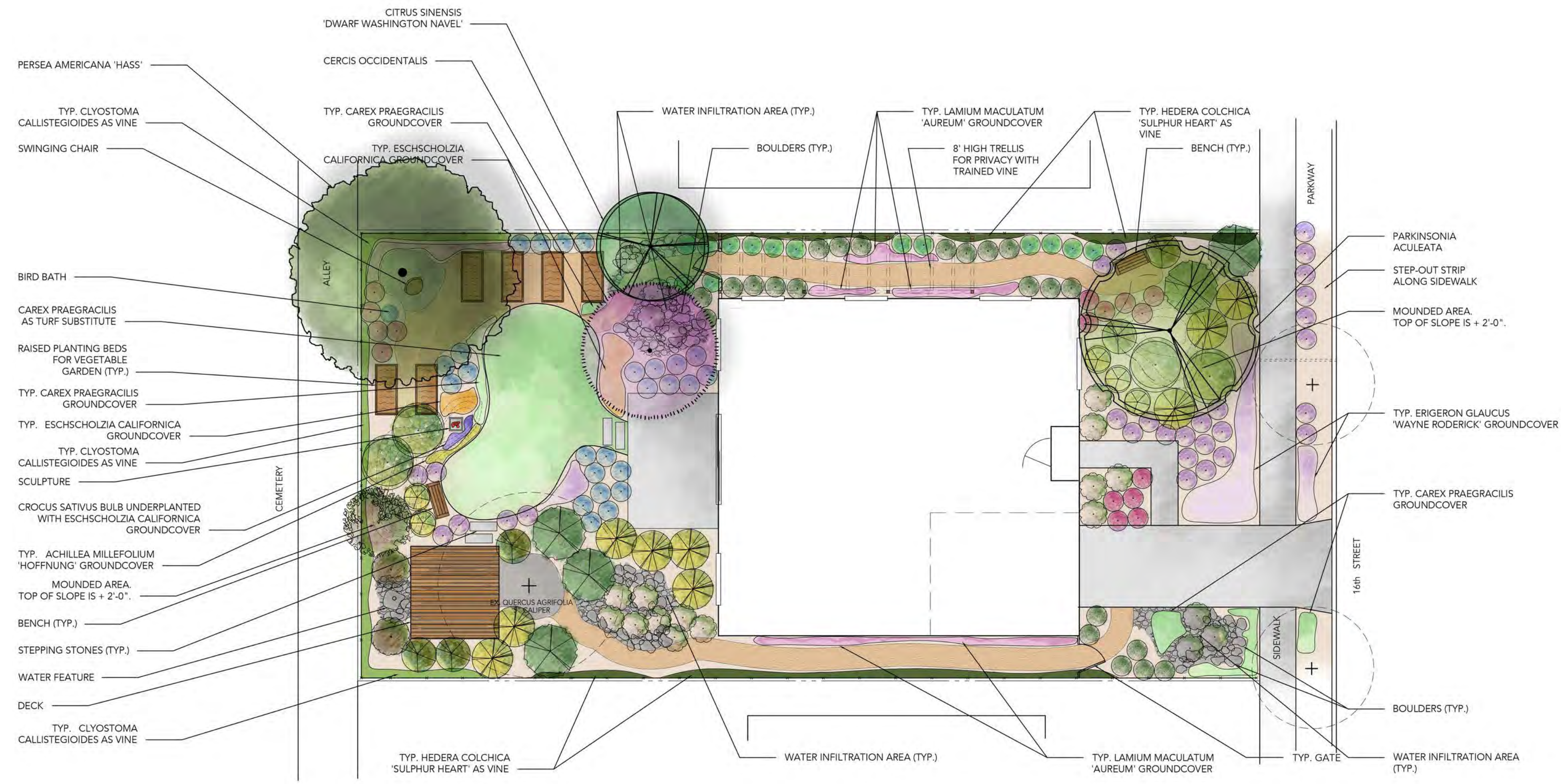
include: Hass Avocado, Dwarf Washington Navel, Lemonade Berry, Coffee Berry, Golden Currant, Winnifred Gilman Cleveland Sage, and Saffron Crocus.

Additionally, privacy and safety concerns were addressed. An 8' high trellis was introduced on the western side yard, where the bedroom windows were exposed to onlookers from the adjacent two story apartment building. A vine - *Hedera colchica* 'Sulphur Heart' - will beautify the trellis and add to the overall aesthetic of the shade garden created below. Moreover, the safety of the daughter and dog was taken into consideration, and lockable gates now exist in each side yard, making the backyard a safe space for the dog to play without any concern of it running away.

Water retention and infiltration areas were placed throughout the garden in three distinct areas as bioswales surrounded by rocks and boulders: two in the back yard and one in the front yard. The ones in the backyard are to each side of the concrete patio, where there are existing field drains. The placement of the infiltration areas in these locations maximize the potential for cleaning the water before it goes back into the water supply. The infiltration area in the front yard is placed at the lowest drainage point on the site, based upon the results of the site analysis. Grass-like plants in these areas continue this meadow-like feel in turn.

Finally, focal points were crucial to the design and understanding of the planting plan. As visible in the Bubble or Area Use Diagram, several focal points were created to draw the eye outward into both the front and back gardens. On axis with the house is a focal point straight ahead, where a mound has been created to add dimension to a planting area with much visual appeal, such as a bright-colored sculpture. In the corner of the backyard - in the meditation area - is a hidden water feature, the sound of which makes one want to go out and find it, in turn making the garden feel much larger. Lastly, in the front yard, a view from the living room window out onto a *Parkinsonia aculeata* and an adjacent bench is equally as irresistible.

# CONCEPTUAL PLAN



# PLANT PALETTE

| PHOTO | BOTANICAL NAME   | COMMON NAME                   | HEIGHT | WIDTH  | WUCOLS   | NATIVE | KEY |
|-------|--|-------------------------------|--------|--------|----------|--------|-----|
|       | <i>Persea americana</i> 'Hass'                         | Hass Avocado                  | 30-40' | 25-35' | Medium   | X      |     |
|       | <i>Citrus sinensis</i> 'Dwarf Washington Navel Orange' | Dwarf Washington Navel Orange | 8-12'  | 8-12'  | Medium   | X      |     |
|       | <i>Rhus integrifolia</i>                               | Lemonade Berry                | 3-10'  | 3-10'  | Very low | X      |     |
|       | <i>Ceanothus 'Concha'</i>                              | Concha Ceanothus              | 6-7'   | 6-8'   | Low      | X      |     |
|       | <i>Ribes aureum gracillimum</i>                        | Chaparral/Bush Malow          | 4-6'   | 4-6'   | Very low | X      |     |
|       | <i>Ribes aureum gracillimum</i>                        | Golden currant                | 3-6'   | 3-6'   | Very low | X      |     |

| PHOTO | BOTANICAL NAME  | COMMON NAME                     | HEIGHT | WIDTH     | WUCOLS   | NATIVE | KEY |
|-------|---|---------------------------------|--------|-----------|----------|--------|-----|
|       | <i>Parkinsonia aculeata</i>                                 | Bush Anemone                    | 6-8'   | 3-5'      | Low      | X      |     |
|       | <i>Minimus aurantiaca</i>                                   | Sticky Money Flower             | 3-4.5' | 3-4.5'    | Very low | X      |     |
|       | <i>Cercis occidentalis</i>                                  | Western Redbud                  | 10-18' | 10-18'    | Low      | X      |     |
|       | <i>Salmia clevelandii</i> 'Winnifred Gilman Cleveland Sage' | Winnifred Gilman Cleveland Sage | 3'     | 3'        | Very low | X      |     |
|       | <i>Digitalis x mertonensis</i>                              | Manson's Foglode                | 2-3'   | 2-3'      | Medium   |        | X   |
|       | <i>Aceranthus mollis</i>                                    | Bear's Breech                   | 4-5'   | 2-3'      | Medium   |        | X   |
|       | <i>Aspidistra elatior</i>                                   | Cast Iron Plant                 | 2-3'   | 2-3'      | Medium   |        | X   |
|       | <i>Lemonada</i> 'Gooden Creek Grey'                         | Gooden Creek Lavender           | 2-3'   | 2-3'      | Low      |        | X   |
|       | <i>Deschampsia cespitosa</i>                                | Tuffed Hair Grass               | 1-2'   | 2-4'      | Medium   |        | X   |
|       | <i>Carex praegracilis</i>                                   | California Field Sedge          | <1'    | Spreading | Medium   | X      |     |

| PHOTO | BOTANICAL NAME                           | COMMON NAME                   | HEIGHT | WIDTH  | WUCOLS   | NATIVE | KEY |
|-------|--|-------------------------------|--------|--------|----------|--------|-----|
|       | <i>Achillea millefolium</i> 'Hoffnung'   | Hoffnung Yarrow               | 1-3'   | 1-2'   | Medium   |        | X   |
|       | <i>Erigeron glaucus</i> 'Wayne Roderick' | Wayne Roderick Sea-side Daisy | 1'     | 1-2'   | Low      | X      |     |
|       | <i>Eschscholzia californica</i>          | California Poppy              | 1-2'   | 1-2'   | Very low | X      |     |
|       | <i>Crocus sativus</i>                    | Saffron Crocus                | <1'    | <1'    | Medium   |        | X   |
|       | <i>Lamium maculatum</i> 'Aureum'         | Spotted Dead Nettle 'Aureum'  | 6-12"  | 6-12"  | Medium   |        | X   |
|       | <i>Clytostoma callistegioides</i>        | Lavender Trumpet Vine         | 15-20" | 15-20" | Medium   |        | X   |
|       | <i>Hedera colchica</i> 'Sulphur Heart'   | Sulphur Heart Vine            | 20-30" | 2-3'   | Low      |        | X   |