

## SITE ANALYSIS



Based on analysis and inventory of the site, my goals for the redesign are as follows:

- Remove at least 50% of the existing 'thirsty' turf
- Design appealing pedestrian sitting areas
- Screen campus and new sitting areas from busy streets
- Create a more 'grand' entrance with some UCLA flair

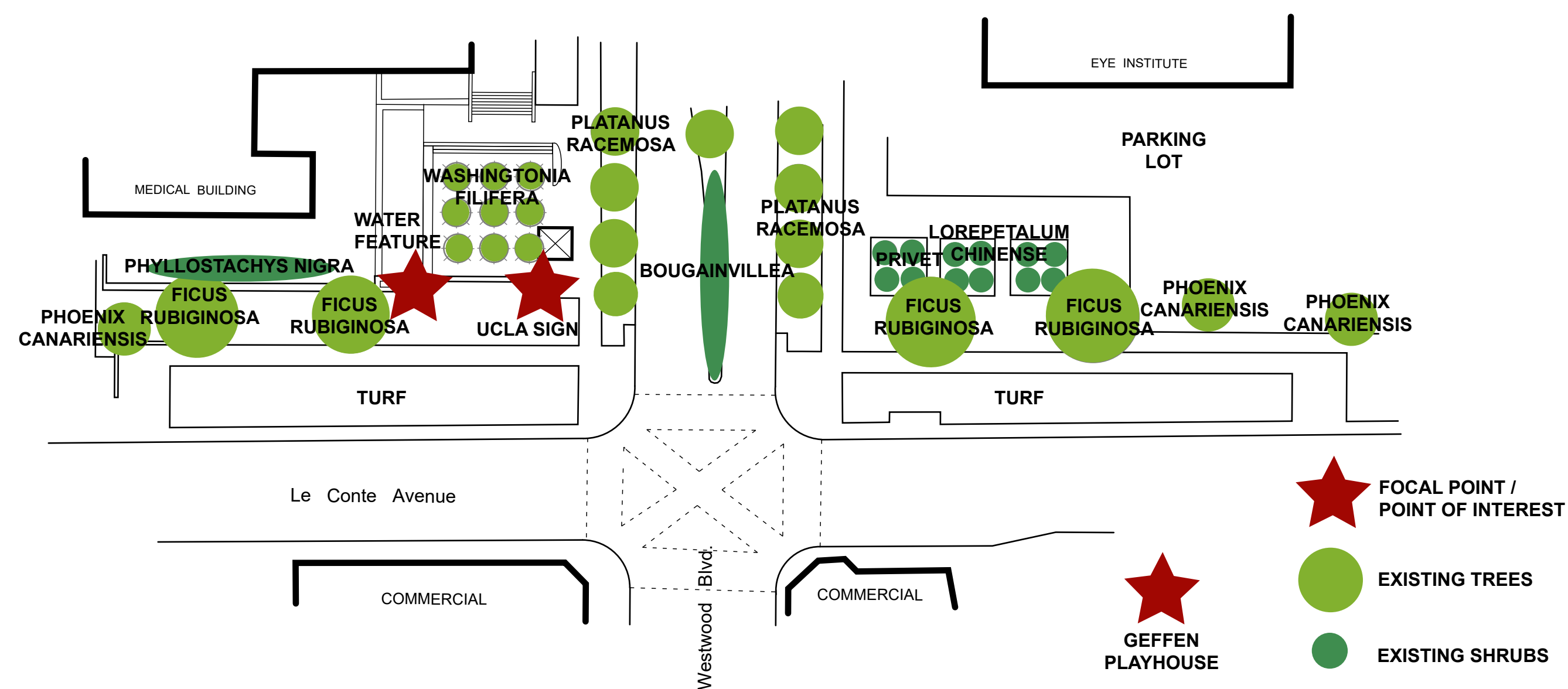
This narrative will examine each goal and explain how it is to be accomplished. All turf is to be removed, except where it has a distinct recreational purpose. Also to be removed are the square raised planters in the northeast section of the site. In their place, will be a gently sloping turf picnic hill lined with shade trees. This will be an ideal place for students to sit, congregate and eat while looking towards the Geffen Playhouse and Westwood Village. There is also a smaller patch of turf on which to gather across the street near the existing UCLA sign and fountain.

That fountain will be expanded so that it extends out from the wall south another six feet. In front of this extended fountain will be a protected courtyard surrounded by benches. The focal point at the center of this courtyard will be a bonsai oak tree on top of a large stone. This courtyard is connected to a private, shaded sitting area with five tables flanked on each side by walls of Black Bamboo. The picnic hill, small turf area, fountain courtyard, private tables, and enhanced sitting areas on the far east and west of the site provide appealing and abundant places for pedestrians to sit, rest, study, and socialize.

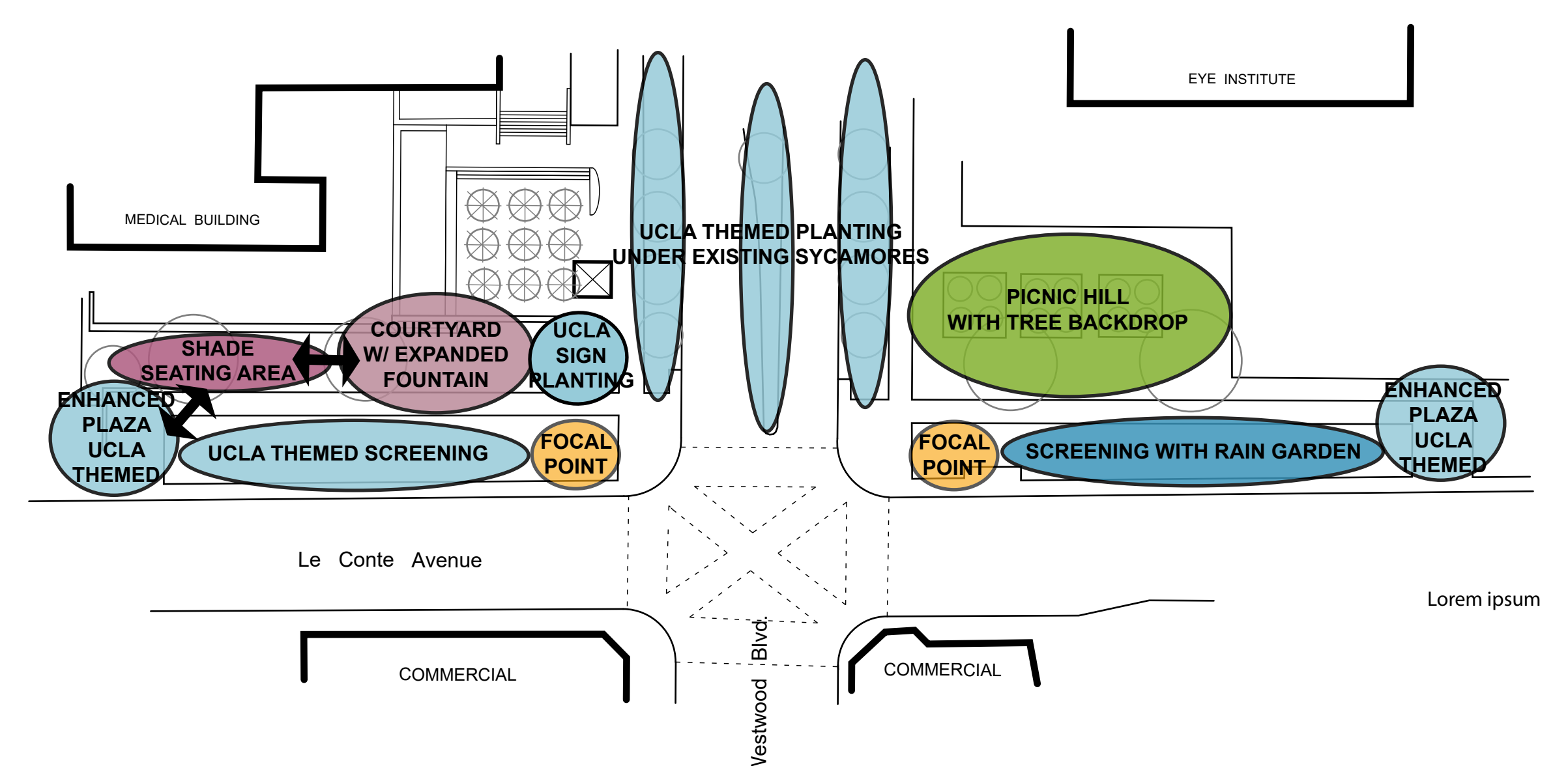
The pedestrians will be protected from the noise and pollution of Le Conte Avenue by plant screening. On the east side, the screen comes in the form of a rain garden with Western Sycamores, Blue Elderberries, native rushes, and a bridge to cross. On the west side, the screen includes two specimen Coast Live Oak trees, drawing upon their deep history in the local ecosystem. These oaks are flanked by Blue Atlas Cedars and bright yellow Ginkgos. This blue and yellow UCLA theme is repeated throughout the planting design. It can be seen in the vines along the brick walls near the enhanced sitting areas, and in the understory of the Sycamore allée up Westwood Boulevard. In particular, the bright yellow Ligustrum hedges on each street corner frame the campus entrance with year-round UCLA flair while retaining existing sight lines for drivers.

This redesign will enhance the grandeur of UCLA's south entrance while providing protected and appealing places to sit and gather. These special recreation spaces will be set against the backdrop of a beautiful, water-wise, blue and yellow tapestry of plants.

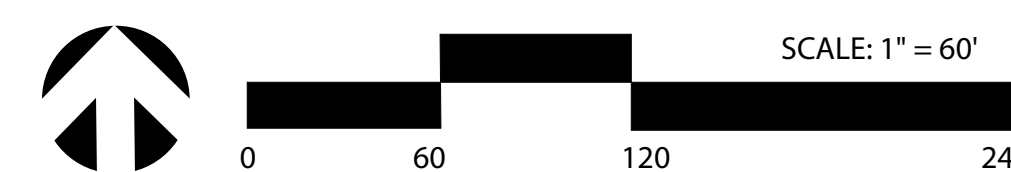
## DESIGN NARRATIVE



## SITE INVENTORY



## AREA USE DIAGRAM



● **VENEGASIA ARPESIOIDES**  
**Canyon Sunflower**  
 3-5' H, 3-5' W  
 Low Water, SWR  
 Adaptable Soil  
 Blooms Yellow in Winter/Summer



● **CEANOTHUS HEARSTIUM**  
**Hearst Ranch Buckbrush**  
 <1' H, 6-8' W  
 Low Water, SWR  
 Well-Drained Soil  
 Blooms Blue in Spring



**SALVIA SPHACEA**  
**Hummingbird Sage**  
 1-2' H, 4-5' W  
 Very Low Water, SWR, Adaptable Soil  
 Blooms Pink in Spring/Summer  
 Dead head inflorescences



● **MORUS ALBA 'FRUITLESS'**  
**Fruitless Mulberry**  
 20-30' H, 30-45' W  
 Medium Water  
 Adaptable Soil



● **FESTUCA ARUNDINACEA 'MARATHON II'**  
**Marathon II Sod**  
 High Water Use  
 Adaptable Soil



● **MIXED JUNCUS PATENS AND MIMULUS TILINGII**  
**Juncus patens California Gray Rush**  
 1-2' H, 1-3' W  
 Low Water  
 Adaptable Soil  
 Blooms Brown Spring to Fall



● **Mimulus tilingii Creeping Monkey**  
 1' H, 1' W  
 Medium Water, Regular Moisture  
 Blooms Yellow Spring/Summer



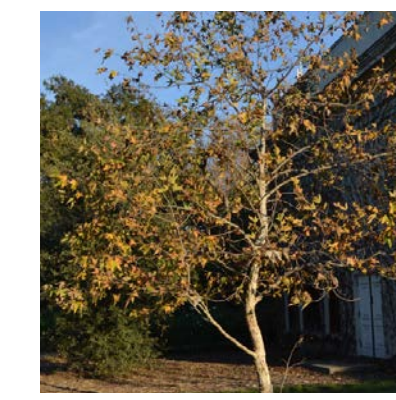
● **THUNBERGIA GRANDIFLORA**  
**Sky Flower**  
 15-20' L  
 Medium Water  
 Blooms Yellow and Blue in Spring/Summer



● **LOMANDRA LONGIFOLIA 'BREEZE'**  
**Dwarf Mat Rush**  
 2-3' H, 8-10' W  
 Low Water, SWR  
 Adaptable Soil  
 Blooms Cream in Spring



● **PLANTANUS RACEMOSA**  
**Western Sycamore**  
 30-80' H  
 20-50' W  
 Medium Water  
 Adaptable Soil  
 Leaves Turn in Fall

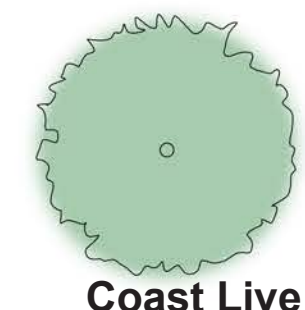


● **BONSAI QUERCUS AGRIFOLIA**  
**ON STONE IN COURTYARD WITH EXPANDED FOUNTAIN**

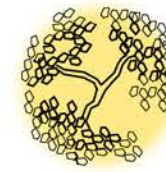
● **PHYLLOSTACHYS NIGRA**  
**Black Bamboo**  
 20-30' H  
 Medium Water  
 Adaptable Soil



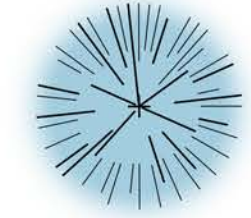
● **QUERCUS AGRIFOLIA**  
**Coast Live Oak**  
 40-60' H, 40-50' W  
 Very Low Water, SWR  
 Adaptable Soil  
 Blooms in Spring  
 Keep dry in summer.  
 Deep soak when watering.



● **GINKGO BILOBA**  
**Maidenhair Tree**  
 35-65' H, 25' W  
 Low Water  
 Adaptable Soil  
 Deciduous, turns golden in autumn



● **CEDRUS ATLANTICA 'GLAUCA'**  
**Blue Atlas Cedar**  
 40-60' H, 25-40' W  
 Low Water  
 Well-Drained Soil



● **LIGUSTRUM SINENSE 'SUNSHINE'**  
**Sunshine Ligustrum**  
 2-3' H, 2-4' W  
 Medium Water  
 Adaptable Soil  
 Bright Yellow Year Round



● **SAMBUCUS NIGRA SUBSP. CERULEA**  
**Blue Elderberry**  
 10-20' H  
 10-20' W  
 Medium Water  
 Adaptable Soil  
 Blooms in Cream Spring/Summer



# CONCEPTUAL PLANTING PLAN

