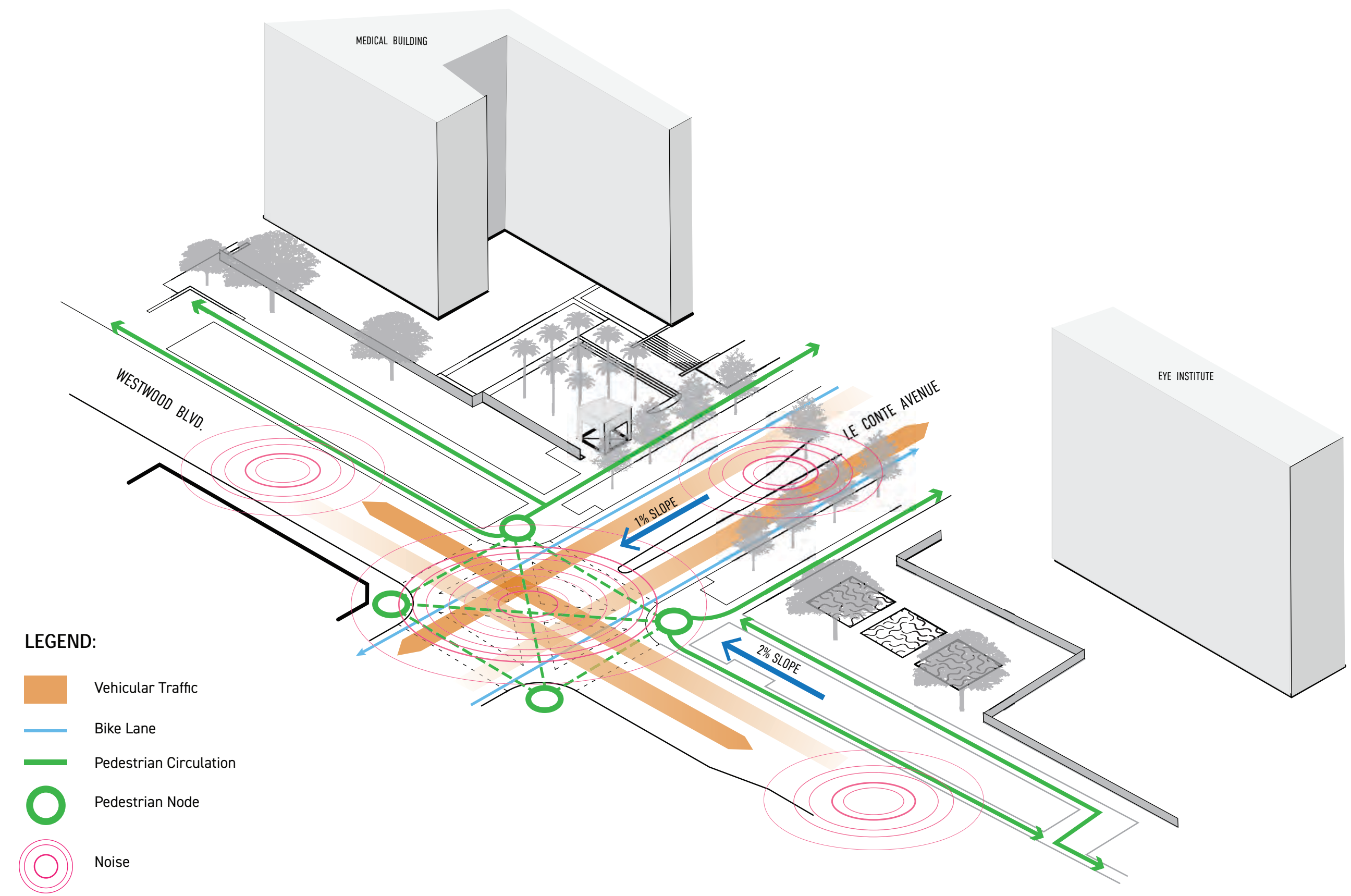
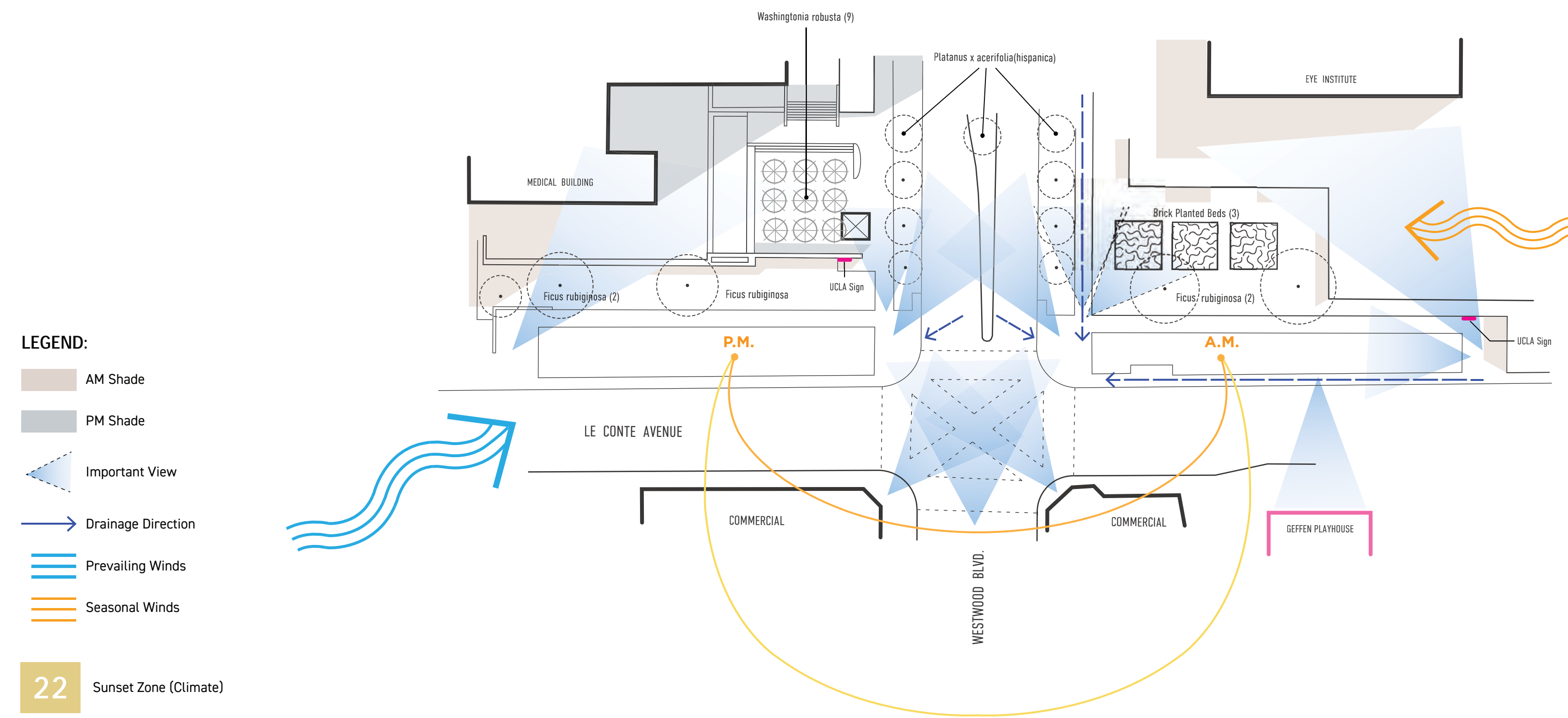


SITE ANALYSIS



< SITE PHOTOS

PROJECT OVERVIEW

The South Entrance to the UCLA campus is a major thoroughfare and gateway. Despite its importance it lacks a strong visual statement, built around large, under-utilized patches of land with potential for greater value to the UCLA community.

Three key concepts are addressed through this redesign proposal: creating a visual connection and landmark gateway through planting; referencing the agricultural history pre-UCLA, and providing unique social spaces. Adjacent to several key UCLA medical facilities, areas that support Wellness and interaction with Nature are incorporated into the program.

SITE HISTORY

UCLA exists on land that had previously been the Wolfskill Ranch. The land was parceled-out and transferred over to the University of California in separate portions over time as development grew. The South campus is one of the most recently-developed areas.

This site at Le Conte Ave. & Westwood Blvd. was the location of the Wolfskill Ranch Orchard. Experimental growing was practiced here, including the selection and cultivation of specific lines of fruit and nut trees. This unique history of scientific horticulture and agriculture is referenced in The Orchard part of the redesign.

PROGRAM CONCEPT

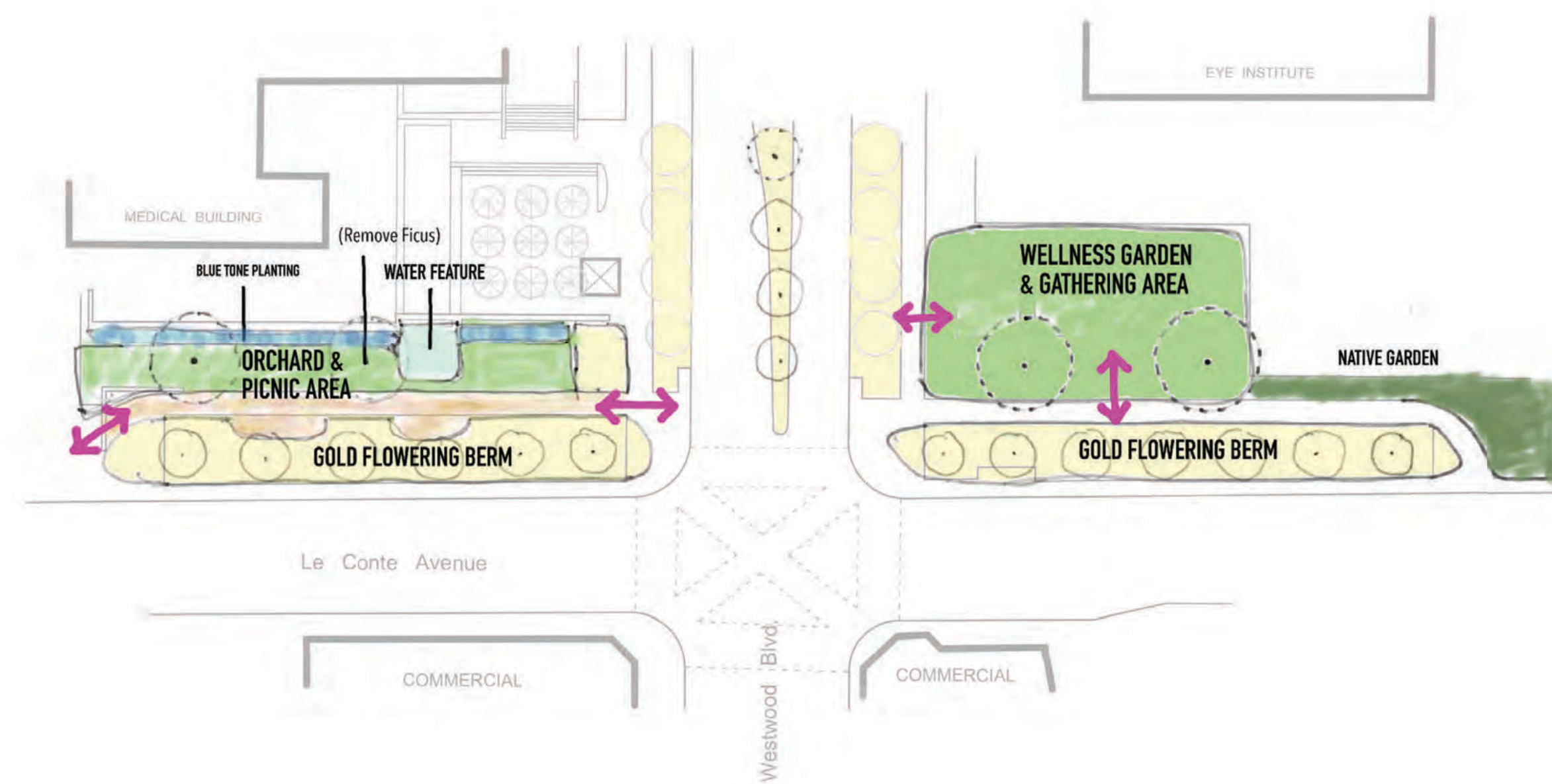
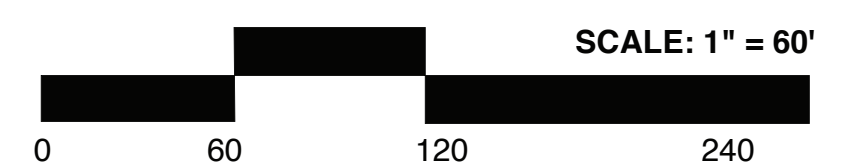


Photo courtesy of www.waterandpower.org



SIMONE DRUCKER
ph: (831) 359-3670
simone.drucker@gmail.com

UCLA Extension
Department of Landscape Architecture
PLANTING DESIGN STUDIO
Stephen Davis, ASLA
Spring, 2020

PROJECT 3:
UCLA CAMPUS
SOUTH ENTRANCE REDESIGN
Le Conte Ave. & Westwood Blvd.
Los Angeles, CA 90024

SITE ANALYSIS & PROGRAMMING

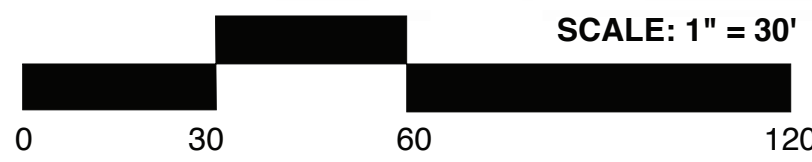
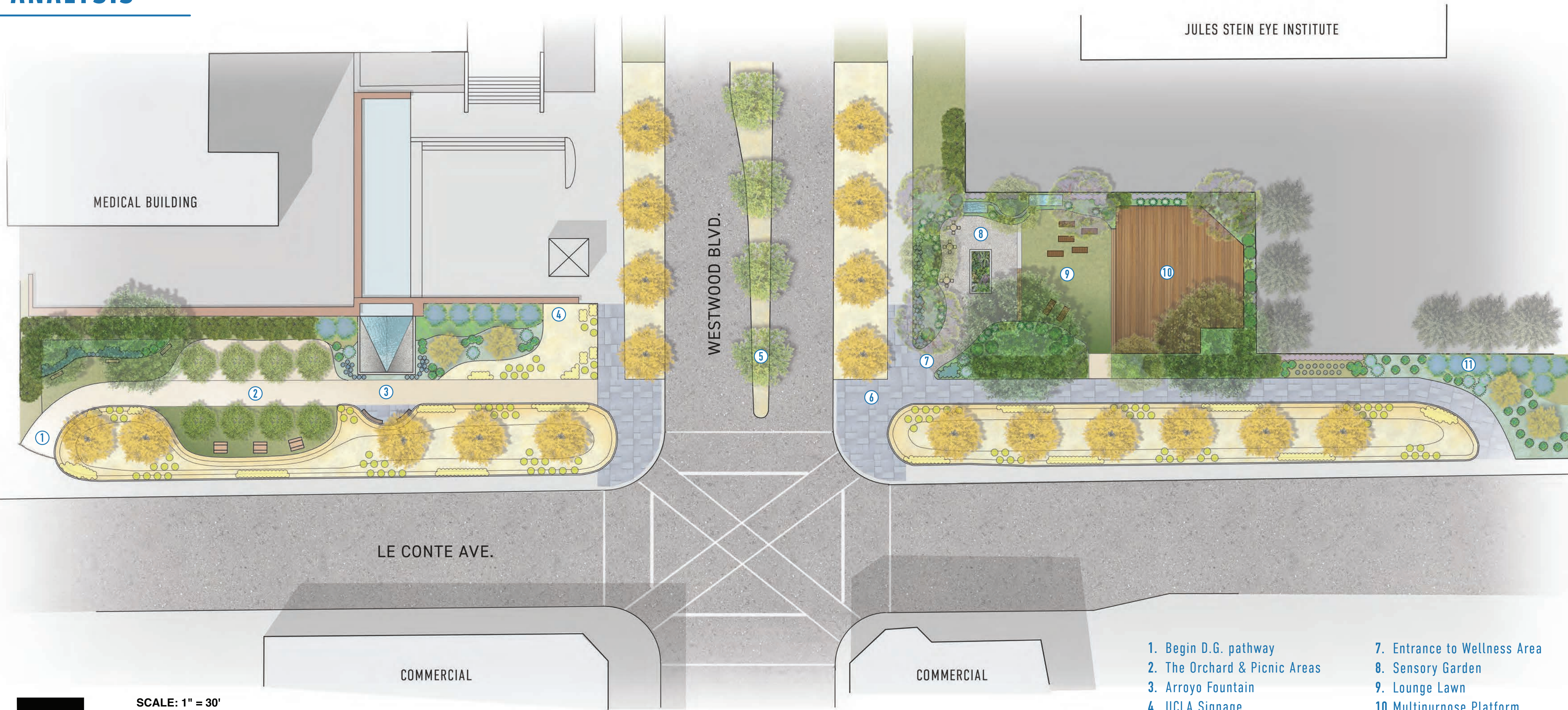
June 10th, 2020

DRAWN BY:
S. Drucker



SHEET
1 OF 2

SITE ANALYSIS



- 1. Begin D.G. pathway
- 2. The Orchard & Picnic Areas
- 3. Arroyo Fountain
- 4. UCLA Signage
- 5. Relocated Platanus acerifolia (3)
- 6. Begin Bluestone pathway
- 7. Entrance to Wellness Area
- 8. Sensory Garden
- 9. Lounge Lawn
- 10. Multipurpose Platform
- 11. UCLA Signage



WEST BLOCK
Planting in shades of gold and blue honor UCLA's school colors. Previously flat grass lawns are transformed into gentle berms, featuring a mixture of golden flowering shrubs and grasses. The prominent plant chosen for this scheme is the Ginkgo biloba tree, lining both sides of the campus entrance. Its brilliant yellow show is timed with students' return to school in the Fall, a beacon of campus pride. Behind the gold berms are plants with bluer tones and blue flowers,

creating a strong contrast between foreground yellow and background blue from early Spring through late Summer. On the West side of the entrance, a decomposed gravel pathway transitions students through lush flower gardens, an updated fountain, picnic areas and a mini orchard. The orchard contains tree species from (or related to) the main cultivars developed at the original Wolfskill Ranch Orchard: Almond, Cherry, Peach, Pistachio, Prune and Walnut.



EAST BLOCK
Located in front of the Jules Stein Eye Institute, a multi-tiered garden and social space lends emphasis to wellness factors and mental health. The plantings selected for this area are chosen in reference to the history of the UCLA Botanical Garden, which was known for its impressive collection of Subtropical species. This characterized the development of landscape design on the UCLA campus as it grew.

The Wellness Area features a multipurpose activity platform, seating, and intimate gathering areas. It includes sensory elements: a fountain, herb garden, and species chosen specifically for their desirable scents such as Michelia champaca and Hedychium coronarium. Jacaranda trees are added for shade and to provide additional pops of color, contrasting with the golden plantings along Westwood Blvd.

PLANT PALETTE

<p><i>Ginkgo biloba</i> Ginkgo Tree</p> <p>Width & Height: 25' x 50' Light: Sun / Part Shade WUCOLS: Low</p>	<p><i>Fremontodendron</i> Flannel Bush</p> <p>Width & Height: 15' x 15' Light: Full Sun WUCOLS: Low</p>	<p><i>Achillea 'coronation'</i> Coronation Gold Yarrow</p> <p>Width & Height: 2' x 3' Light: Full Sun WUCOLS: Low</p>	<p><i>Lupinus luteolus</i> Pale Yellow Lupine</p> <p>Width & Height: 5' x 3' Light: Full Sun WUCOLS: Low</p>
HYDROSEED MIX			
<p><i>Miscanthus sinensis</i> 'kleine fontaine' Maidengrass</p> <p>Width & Height: 3' x 4' Light: Full Sun WUCOLS: Low</p>	<p><i>Eschscholzia californica</i> California Poppy</p> <p>Width & Height: 2' x 2' Light: Full Sun WUCOLS: Low</p>	<p><i>Euryops Pectinatus</i> Shrub Daisy</p> <p>Width & Height: 5' x 5' Light: Full Sun WUCOLS: Low</p>	<p><i>Ceanothus 'Dark Star'</i> Dark Star Ceanothus</p> <p>Width & Height: 8' x 8' Light: Full Sun WUCOLS: Low</p>
<p><i>Trichostema lanatum</i> Woolly Blue Curts</p> <p>Width & Height: 5' x 4' Light: Sun WUCOLS: Low</p>	<p><i>Echium candicans</i> Pride of Madeira</p> <p>Width & Height: 5' x 5' Light: Sun / Part Shade WUCOLS: Low</p>	<p><i>Liriope muscari 'Big Blue'</i> Turf Lily</p> <p>Width & Height: 2' x 2' Light: Sun / Part Shade WUCOLS: Medium</p>	<p><i>Myrtus communis</i> Common Myrtle</p> <p>Width & Height: 12' x 12' Light: Full Sun WUCOLS: Low</p>
<p><i>Festuca glauca</i> Blue Fescue</p> <p>Width & Height: 12" Clump Light: Sun / Part Shade WUCOLS: low</p>	<p><i>Lomandra longifolia</i> 'breeze' Mat Rush</p> <p>Width & Height: 12" Clump Light: Sun / Part Shade WUCOLS: low</p>	<p><i>Jacaranda mimosifolia</i> Jacaranda Tree</p> <p>Width & Height: 30' x 50' Light: Full Sun WUCOLS: Low</p>	<p><i>Michelia champaca</i> Fragrant Champaca</p> <p>Width & Height: 25' x 25' Light: Sun / Part Shade WUCOLS: Medium</p>
<p><i>Hedychium coronarium</i> White Ginger Lily</p> <p>Width & Height: 3' x 6' Light: Sun / Part Shade WUCOLS: Medium</p>	<p><i>Philodendron bipinnatifidum</i> Cut Leaf Philodendron</p> <p>Width & Height: 8' x 10' Light: Sun / Part Shade WUCOLS: Medium</p>	<p><i>Woodwardia fimbriata</i> Giant Chain Fern</p> <p>Width & Height: 4' x 3' Light: Shade / Part Shade WUCOLS: Medium</p>	<p><i>Petrea volubilis</i> Queens Wreath Vine</p> <p>Width & Height: Climbing Light: Full Sun WUCOLS: Medium</p>

SEASONAL INTEREST

Species are chosen to assure vibrant pops of gold and blue foliage throughout the year. The key below shows what is showy in Spring, Summer and Fall.

- YEAR-ROUND BLOOMING
- WINTER / SPRING BLOOMING
- SPRING BLOOMING
- SUMMER BLOOMING
- INCONSPICUOUS FLOWERS