



Residential Planting Design

Terri Larronde

LD 5 Planting Design

UCLA Extension Landscape Architecture

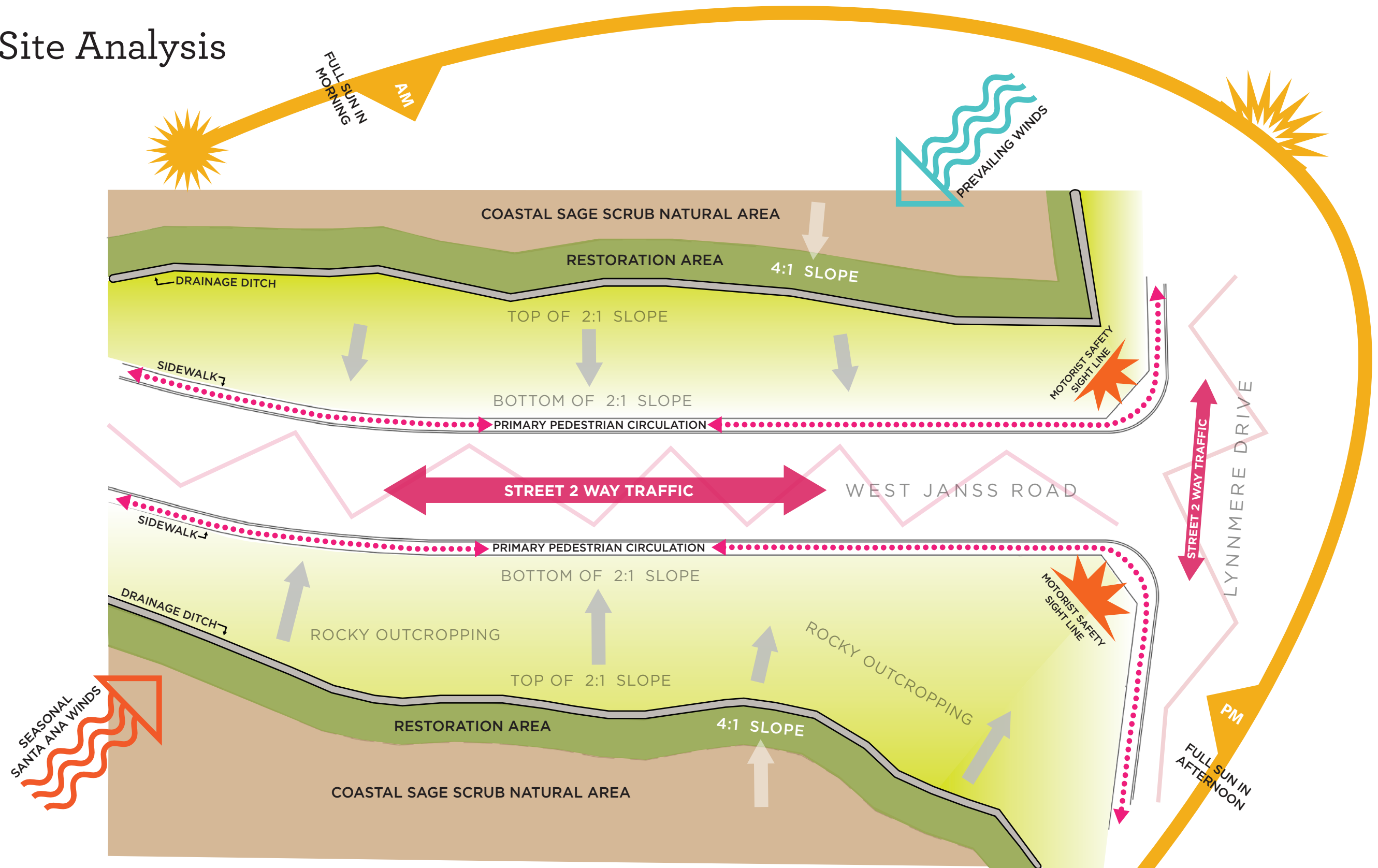
Spring 2020

Project 2

West Janss Road & Lynnmere Drive, Thousand Oaks, CA

May 20, 2020

Slope Site Analysis



Analysis

- Sunset Zone 21 in Thousand Oaks, CA
- Soil: Sandy loam
- Property size: Under 2 acres
- Slope height: average 25'



SCALE 1" = 35'

Design Narrative

West Janss Road and Lynnmere Drive, Thousand Oaks, CA

Goals:

- **Restore** the previous construction area at the top of the slope, which has been stripped bare.
- **Control erosion.** Stabilize the entire slope and establish a sustainable ecosystem in the natural sage scrub area.
- **Encouraging biodiversity** using native plants as much as possible to encourage wildlife engagement.
- **Provide a pleasing a restorative landscape** for the neighborhood pedestrians and onlookers.

Top of Slope

Enhancing the existing sage scrub with California native plantings will bring back the ecosystem from before the construction damage. Coast Prickly Pear, Hollyleaf Red-berry, and California Sagebrush, all CA natives, will start providing shelter and food for the new habitat. This 4:1 slope area above the drainage ditch will be completely natural and hydroseeding will be implemented. Hydro-seeding soils hold moisture better than sod or hand seeded types, and the seeds can germinate quicker. Additionally, hydroseeding includes fewer weed seeds, no layering of soils, greater possibility of planting trees and shrubs, and incorporates a tackifier coagulant that will not experience wash-out. This, plus, complementing the area with additional sage scrub plants will establish the restoration quickly, and provide vibrancy to attract wildlife. California Poppy Carmine King, a unique red poppy, will add a cascade of color, with accents of blue Arroyo Lupine and White Sage. Blue Wildrye, a native grass, should establish easily in the nooks and crannies of the rocky outcropping, with additional hardy seeds from the other flowers filling the larger gaps.

2:1 Slope

Erosion control continues down the 2:1 slope under the drainage ditch, but here newly planted large trees

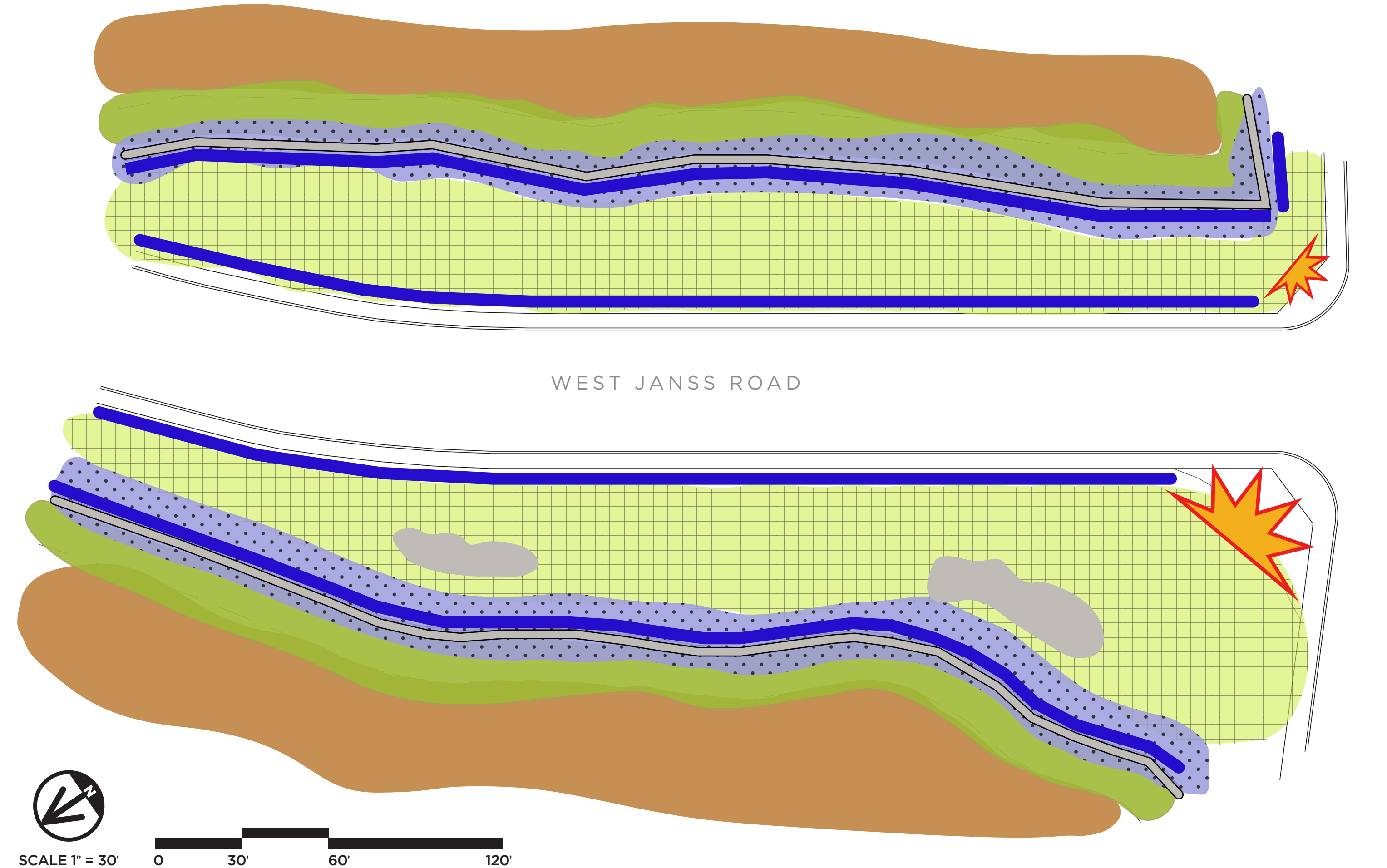
are coordinated with an array of shrubs and a different hydroseed mix. The matrix of root fibers are imperative to stabilize the soil on this steeper section. Blue Oak, and the California Laurel street trees, will provide a canopy of protection for wildlife and windbreaks. Black Walnut, the only deciduous tree, will add seasonal interest, while supplying a valuable food source for wildlife earlier in the season. Complementary colors in flowering led the choice of the shrubs toward the top, with additional fruits and berries, again, to encourage an active ecosystem. The more animals and insects that engage in the area, the more balance and harmony will develop as they establish and stabilize their populations.

The Hydroseed mix on the 2:1 slope provides even more flowers and soil stability, especially as the trees and shrubs are getting established. Planted naturally and randomly, the shrub palette again has an emphasis on color, scent, sustenance and support for the burgeoning wildlife colonies. Desert Chia, Clarkias, Yarrow and Blue Flax round out the mix that will attract pollinators and explode with color in the spring and summer.

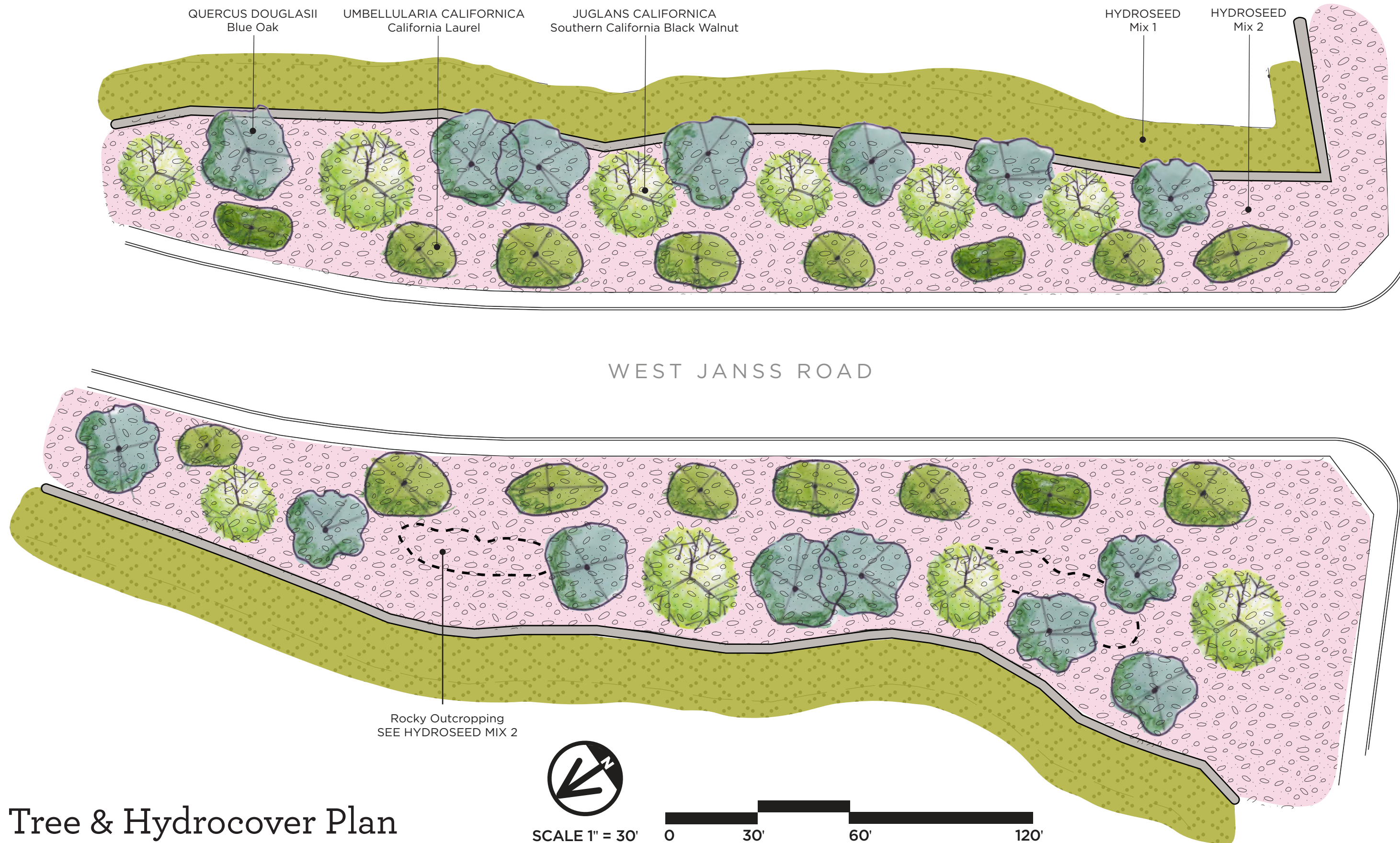
As plants establish and settle, natural pathways from wildlife foot traffic will develop. This will provide space for pedestrians to gently experience the area from a closer vantage. Pedestrians that choose to challenge the vertical slope will encounter shrubs of Fragrant Sumac with its dramatic Fall burst of orange, and Black Sage and with its aromatic lure. Balancing the cool palette of purples, pinks and white are Sugar Bush, Ceonothus, Pestemaon, Buckwheat, Godetia, Chaperel Mallow, Purple Chinese Houses, and California Aster; surrounded by Blue Eyed Grass and Idaho Fescue as a trim at the sidewalk edge. The sights and scents of the landscape will supply a welcome sensory experience for anyone who wanders near.

Area Use Plan

-  Sage Scrub Natural Area
-  Natural Slope Area
-  Hydroseed Mix 1
-  Hydroseed Mix 2
-  Erosion Control Area
-  Fractured Rocky Outcropping
-  Motorist Safety Sight Line
-  Concrete Drainage Ditch



Tree & Hydrocover Plan



QUERCUS DOUGLASII
Blue Oak

UMBELLULARIA CALIFORNICA
California Laurel

JUGLANS CALIFORNICA
Southern California Black Walnut

HYDROSEED
Mix 1

HYDROSEED
Mix 2

WEST JANS S ROAD

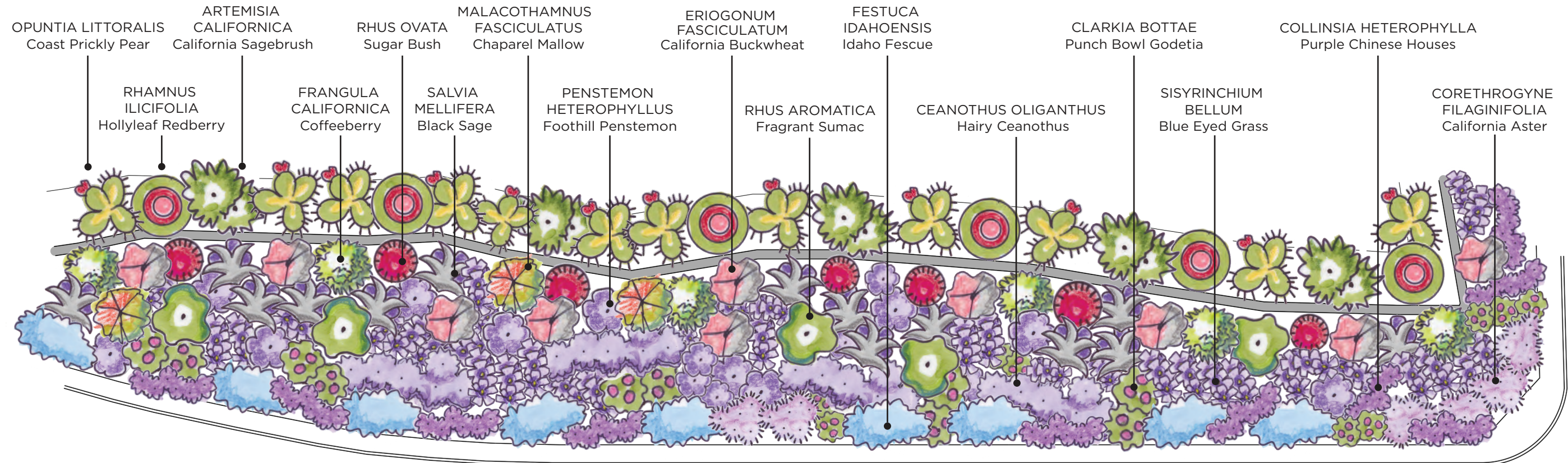
Rocky Outcropping
SEE HYDROSEED MIX 2



SCALE 1" = 30'



LYNNMERE DRIVE



WEST JANSS ROAD



SEE HYDROSEED PLAN
Rocky Outcropping



SCALE 1" = 30'



Shrub Plan

LYNNMERE DRIVE

Plant Palette

TREES



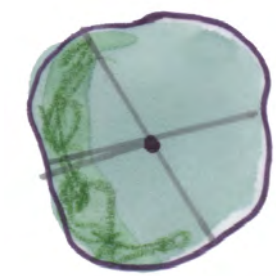
Quercus douglasii
Blue Oak
30' - 60' high
WUCOLS Very Low



Juglans californica
Southern CA Black Walnut
Up to 30' high
WUCOLS Low



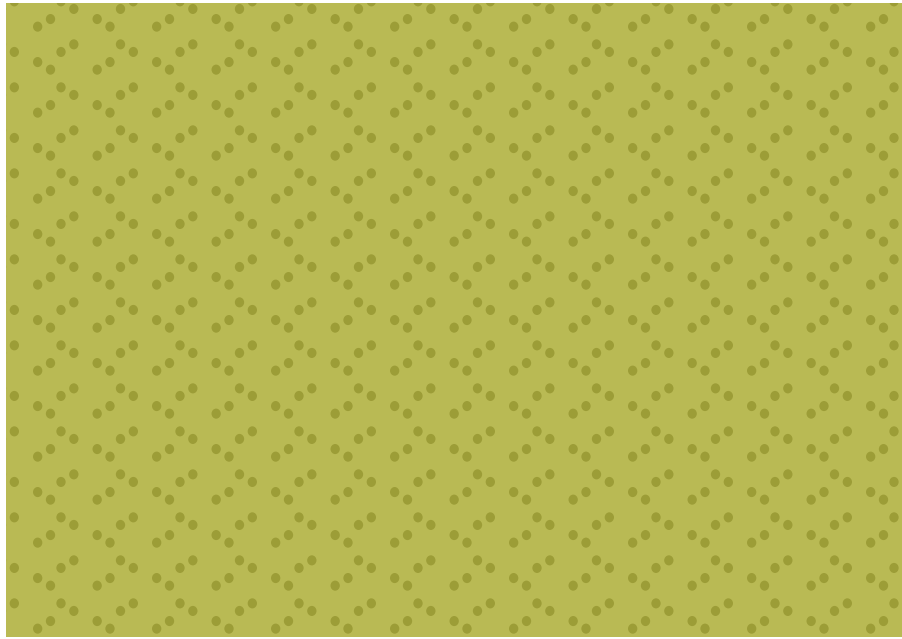
Umbellularia californica
California Laurel
20'-45' high
WUCOLS Low



UNLESS OTHERWISE NOTED, ALL BARE PLANTING AREAS SHALL RECEIVE A 3" LAYER OF TREE CHIP MULCH.
CHIPS SHOULD NOT BE TOO LARGE; NO EUCALYPTUS OR ASH SEEDS.
THIS DOES NOT INCLUDE THE HYDROSEED AREAS WHICH ALREADY HAVE MULCH IN THEIR MIX.

COASTAL SAGE SCRUB MIX

HYDROSEED MIX 1



Salvia apiana
White Sage
3'-5' high, 3' to 8' wide
WUCOLS Low
20%



Lupinus succulentus
Arroyo Lupine
2'-4' high, 3' wide
WUCOLS Low
20%



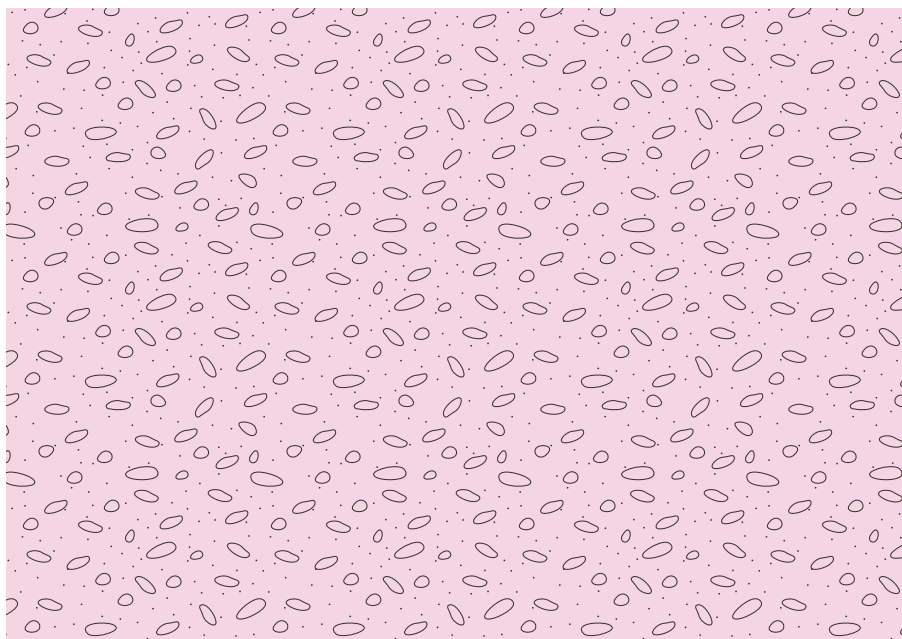
Eschscholzia californica
California Poppy Carmine King
1'-1.5' high, .5'-1' wide
WUCOLS Very Low
40%



Elymus glaucus
Blue Wildrye
1'-3' high
WUCOLS Low
20%

FLOWERING MIX

HYDROSEED MIX 2



Salvia columbariae
Desert Chia
.33'-3' high, 1' wide
WUCOLS Very Low
30%



Clarkia amoena
Godetia or Farewell to Spring
1.5'-3.3' high
WUCOLS Low
20%



Achillea millefolium
Common Yarrow
1'-3' high, .5'-1.5' wide
WUCOLS Low
30%



Linum lewisii
Blue Flax
1.5'-3' high
WUCOLS Very Low
20%

SHRUBS



Opuntia littoralis
Coast Prickly Pear
3.3' high
WUCOLS Very Low



Rhamnus ilicifolia
Hollyleaf Redberry
1-9' high, .3'- 9' wide
WUCOLS Very Low, Extremely Low



Artemisia californica
California Sagebrush
4' - 6' high, 4' - 6' wide
WUCOLS Very Low



Frangula californica
Coffeeberry
6'-15' high, 5' to 15' wide
WUCOLS Low, Very Low

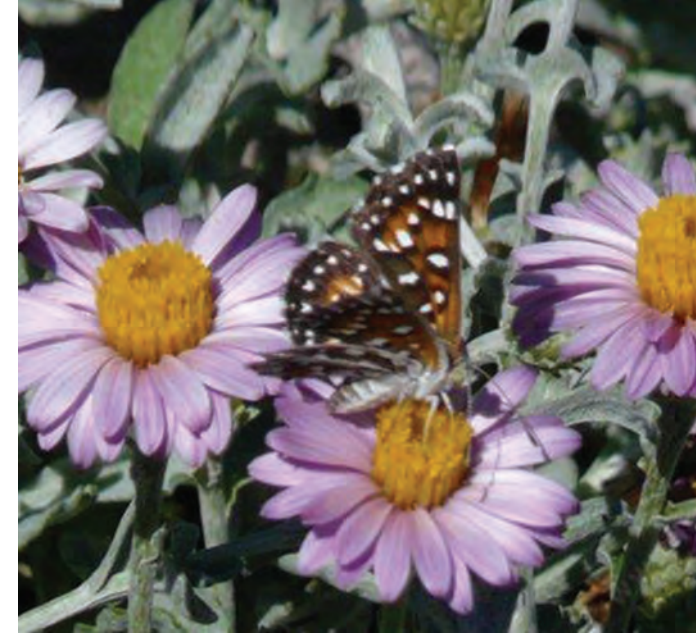




Penstemon heterophyllus
Foothill Penstemon
3.3'-5' high, 5' wide
WUCOLS Very Low



Eriogonum fasciculatum
California Buckwheat
1'-6' high, 3' wide
WUCOLS Very Low, Extremely Low



Corethrogyne filaginifolia
California Aster
.7' - 3.3' high, 1' - 6' wide
WUCOLS Very Low



Salvia mellifera
Black Sage
3' - 6' high, 10' wide
WUCOLS Very Low, Extremely Low



SHRUBS



Festuca idahoensis
Idaho Fescue
1'-2.6' high, .5' wide
WUCOLS Very Low



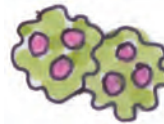
Collinsia heterophylla
Purple Chinese Houses
3"-1.6' high
WUCOLS Low



Malacothamnus fasciculatus
Chaparel Mallow
Up to 16' high
WUCOLS Very Low



Clarkia bottae
Punch Bowl Godetia
3.3' high, .5' wide
WUCOLS Low





Rhus ovata
Sugar Bush
6.6'-32' high
WUCOLS Very Low



Ceanothus oliganthus
Hairy Ceanothus
10' high, 12' wide
WUCOLS Very Low



Rhus aromatica
Fragrant Sumac
1.6' - 8' high, 8' wide
WUCOLS Low



Sisyrinchium bellum
Blue Eyed Grass
.1'-2' high, 3' wide
WUCOLS Low

