

## SITE ANALYSIS

### Location

Intersection of Le Conte Avenue & Westwood Boulevard in Los Angeles, California.  
Latitude is 34°N. Elevation 333 ft.

Historical Notes taken from Water and Power Associates  
[https://waterandpower.org/museum/Early\\_Views\\_of\\_UCLA](https://waterandpower.org/museum/Early_Views_of_UCLA)

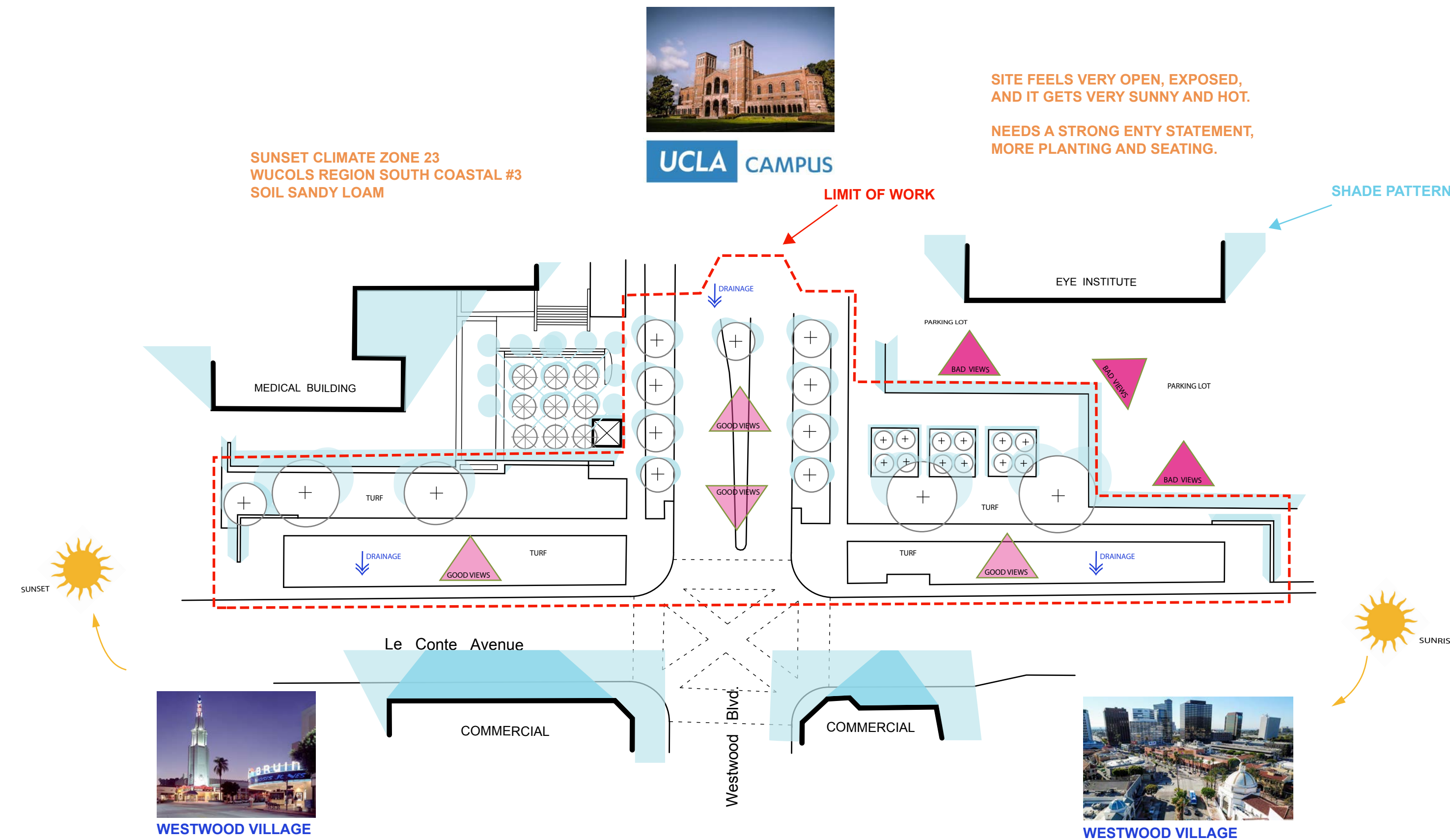
The south entry of the UCLA campus connects the campus with Westwood Village, a commercial district with shopping and entertainment surrounding residential neighborhoods. Opening in 1929, the original design of Westwood Village was considered one of the most well planned and beautifully laid out of commercial areas in the nation. Harold Janss, the developer of Westwood Village, had hired major architects and instructed them to follow a Mediterranean theme, with clay tile roofs, decorative Spanish tile, paseos, patios and courtyards. Buildings located at strategic points, including theaters, used towers to serve as beacons for drivers on Wilshire Boulevard. Janss picked the first site of businesses and determined their location in the neighborhood; the area opened with 34 businesses, and despite the Great Depression, had 452 in 1939.



1937 - 1937 - The intersection of Le Conte Avenue and Westwood Boulevard, looking southwest. On the far side is the Holmby Building in Westwood Village. It is a retail and office building in the California Mediterranean style.

### Existing plants on site

Platanus x acerifolia (Phispanica)  
Ficus rubiginosa  
Pinus ponderosa  
Pinus canariensis  
Phyllostachys nigra  
Washingtonia filifera  
Loropetalum chinense 'Rubrum'  
Agapanthus praecox  
Hemerocallis lilioasphodelus  
Pittosporum tobira  
Parthenocissus tricuspidata  
Ligustrum japonicum  
Stenotaphrum secundatum  
Cynodon dactylon



SITE FEELS VERY OPEN, EXPOSED, AND IT GETS VERY SUNNY AND HOT.  
NEEDS A STRONG ENTRY STATEMENT, MORE PLANTING AND SEATING.

## DESIGN NARRATIVE

The overall goal is to redesign the south entry of the UCLA Campus. My approach to this design was rooted in the notion of *Primum non nocere*, the Latin phrase meaning "first, do no harm." I retained many of the existing plants in my design, particularly mature trees such as the four large *Ficus rubiginosa* and the tree lines of *Platanus x hispanica* along Westwood Plaza — including adding more of both trees. We were also given three design goals, including:

1. Create a strong entry statement — primarily with planting and avoiding the use of architectural features such as entry arches — to help motorists and pedestrians recognize this as the main entrance to the campus.

I sought to create the feeling of a large entry gate by placing *Cupressus sempervirens* — trimmed into rectangular columns — and *Washingtonia robusta* in six different places along the two entrances to the campus. Additional *Cupressus sempervirens* placed along Le Conte Avenue further contribute to the sense of approaching to a significant site. These two plant species have a vertical form, with their tall height creating a feature element marking the boundaries and entries to the campus. This approach also symbolizes the neighborhood's movie theater towers, further connecting the campus with historic Westwood. Finally, I expanded the gathering places, replacing the squared-off design of the bricks with a more natural curved design.

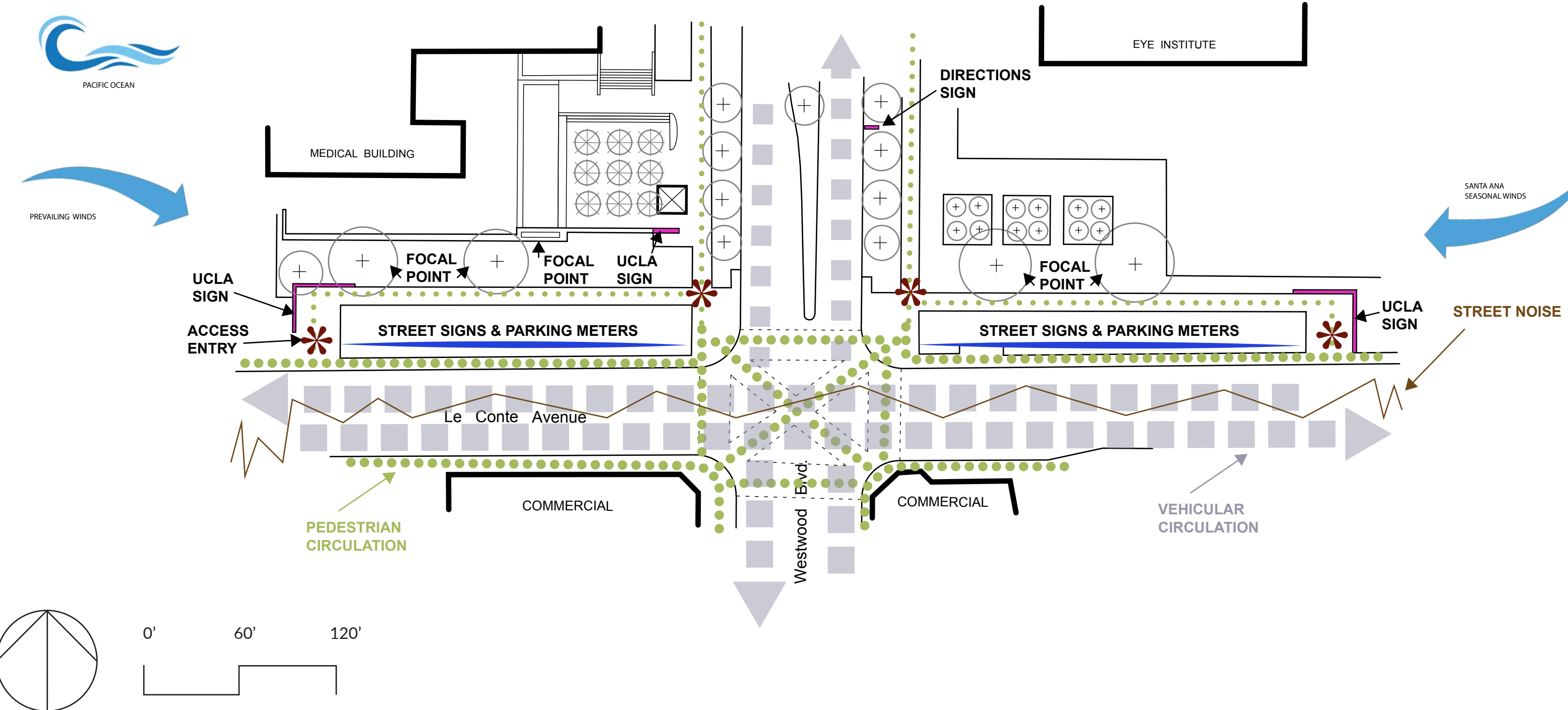
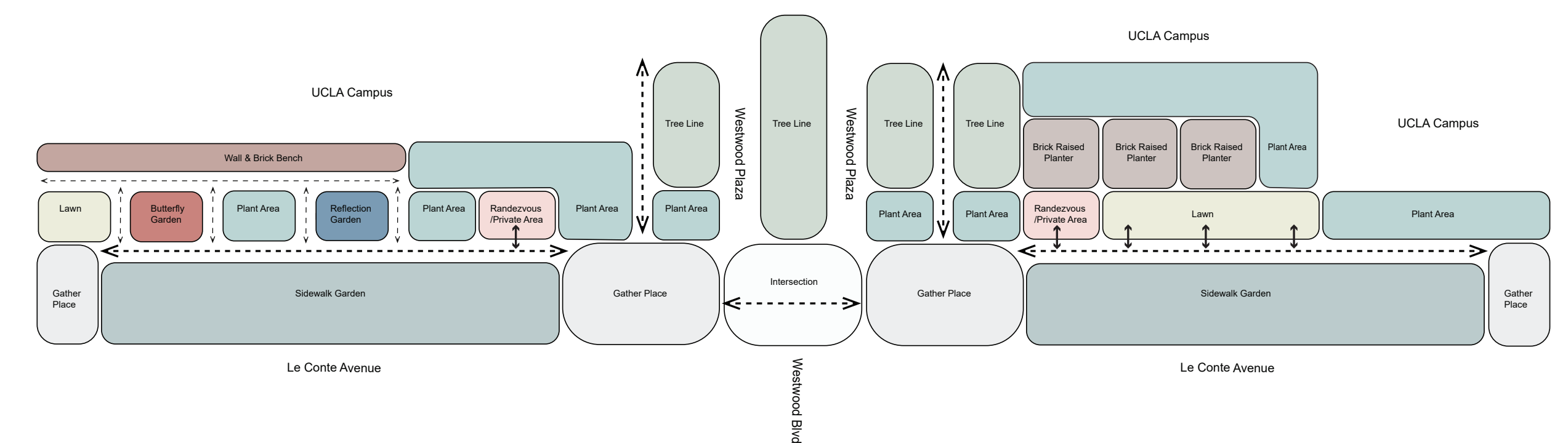
2. Develop a sequence of pedestrian spaces with seating and/or gathering areas.

I added additional permeable pavement pathways, matching the existing pathway style and adding benches under the shade of existing trees. Special new areas include a butterfly garden, a reflection garden opposite the existing reflecting pool, and two private rendezvous areas adjacent to the north entrances. I also retained several of the lawn areas, which are a favorite of students, staff and visitors who use them for sunbathing and relaxation. I repurposed the raised planters to create a sense of woodland, since the area is surrounded by pines and other big trees.

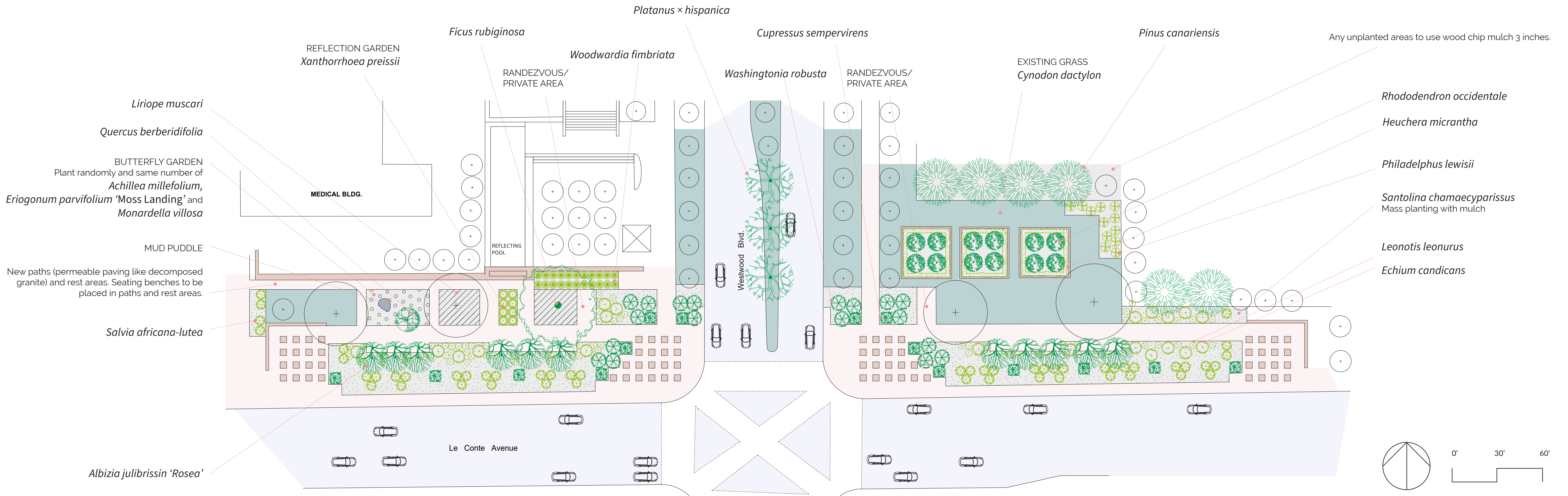
3. Utilize a plant palette with a UCLA connection.

I applied a Mediterranean plant palette with other exotic plants and California Natives, as well as using existing plants on site and from the neighborhood.

## AREA USE DIAGRAM



## CONCEPTUAL PLANTING PLAN



## PLANT PALETTE

