

DESIGN NARRATIVE

The south entry to the UCLA campus is an important junction which connects the historic university to Westwood, provides access its world class medical facilities, and leads to the heart of student activity at Ackerman Plaza. However, the design of this area is non-descript and lacking - particularly in regard to its planting design.

This design uses planting to create additional areas for people to gather and rest, increase visual interest for pedestrians and drivers, and play into the university's identity through a subtle and seasonally varied blue and gold palette. An alley of ginkgo trees on Le Conte Avenue stands alone on a minimal decomposed granite parkway, providing a dense canopy of shade for students to rest on their to or from Westwood. The ginkgos provide a stunning display of golden foliage in the fall, and the loose and open structure of the area gives people the option to use it as a wide sidewalk, cut through from one paved area to another, or stop and rest at the benches under the trees.

While retaining the turf adjacent to the fountain and brick wall, a focal point planting of alternating Davis gold toyon and concha ceanothus put on a show with their respective berries and flowers in the winter. Lewis flax and golden yarrow provide color and texture in the spring. The struggling ficus trees are swapped out for Chinese elm, providing additional shade for those lounging on the lawn or at the fountain.

Across Westwood Boulevard, A single row of ginkgo's provides a similar function while also providing shade for the currently unsheltered bus stop. The raised brick planters remain, and are repurposed to feature plants with contrasting colors and textures - most notably a mass of electric blue penstemons around the border and showy knife-leaf wattles in the center.

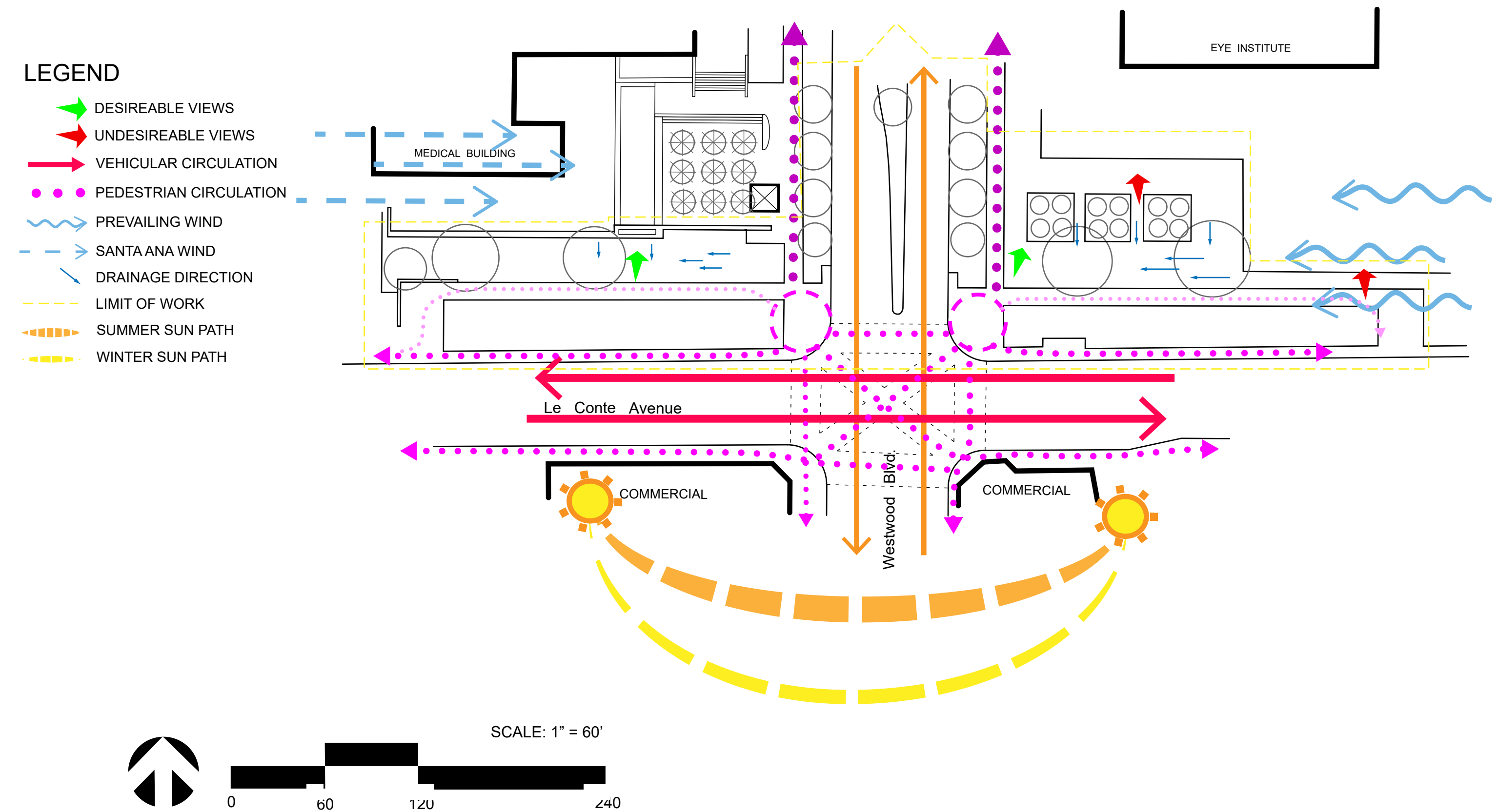
Pacific wax myrtles provide robust and charismatic screening for the parking lot behind the entryway, and the existing Canary Island pines are retained for their vertical scale and screening use. The sidewalks leading towards campus are given an upgrade from the current lawn and London plane tree, replacing the lawn with alternating clusters of Yankee Point ceanothus and blue gamma grass. This planting takes advantage of blue gamma's dormancy, leaving the graceful golden blades to contrast with the glowing blue-violet of the ceanothus during the winter. A layer of wind-swept California sagebrush provides a backdrop and a sense of separation from the street.

The center median is planted with sycamores to balance out the scale of the wide street, and a monochromatic swath of blue-gray canyon prince wild rye flows like a river along its entire length.

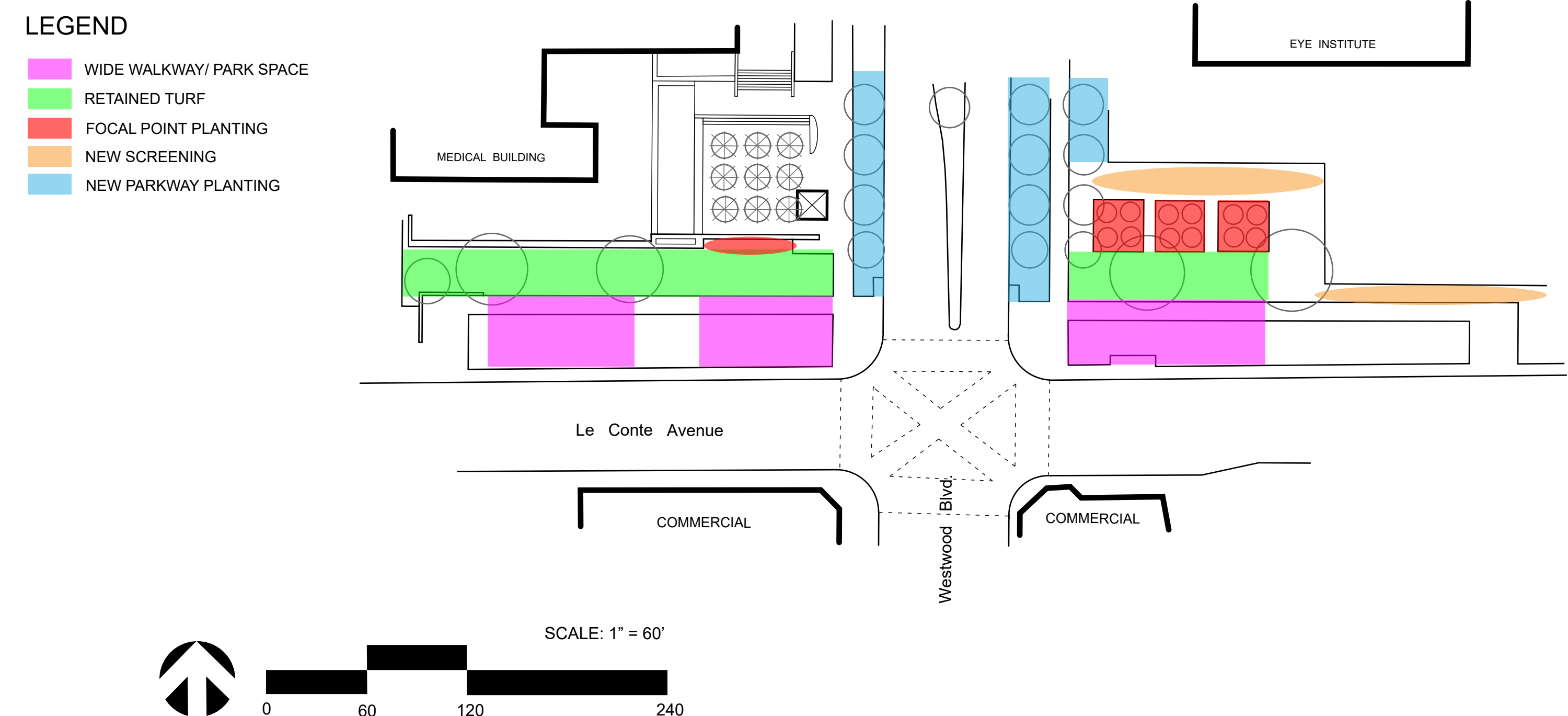


Alley of ginkgo biloba, benches, and decomposed granite walkway from the corner of Westwood Blvd. and Le Conte Ave.

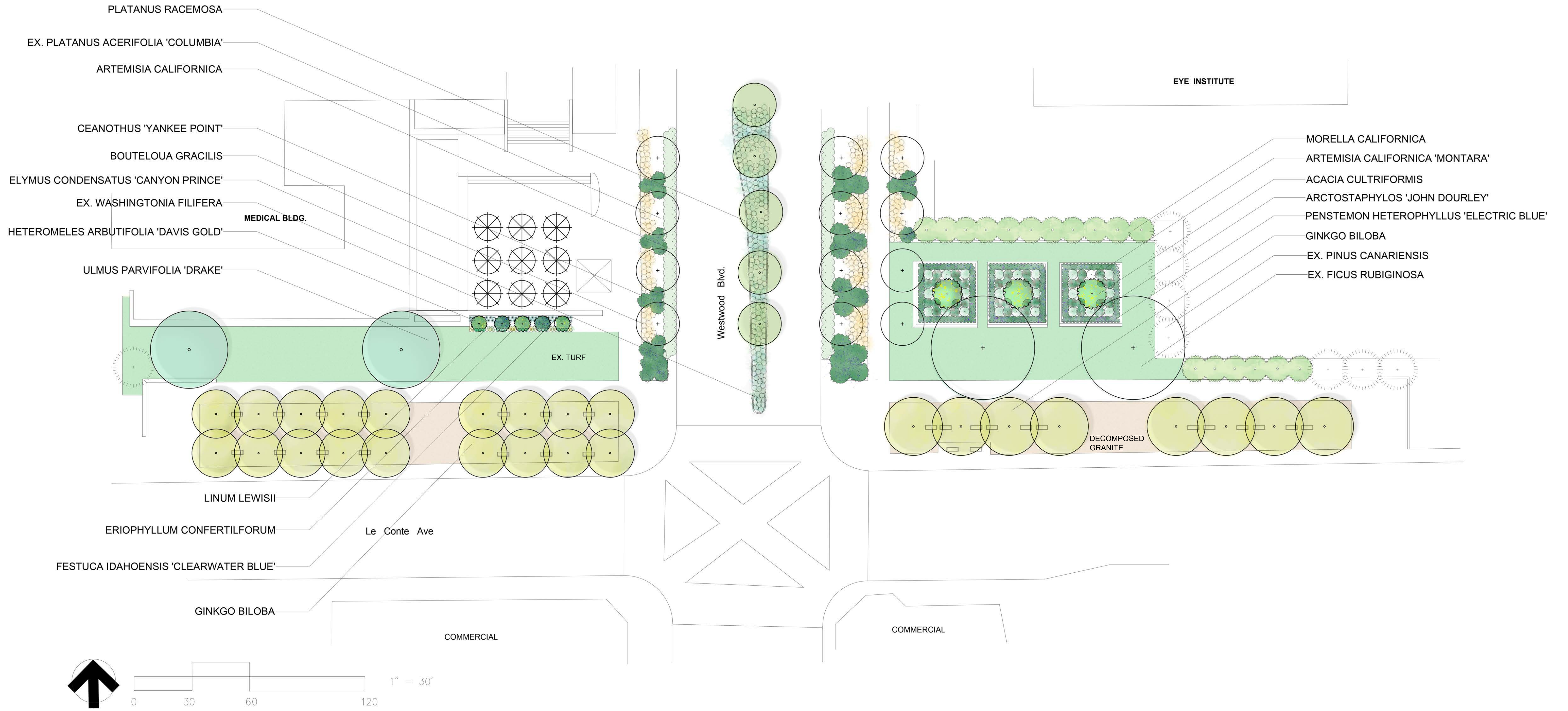
SITE ANALYSIS



PROPOSED AREA USE



CONCEPTUAL PLANTING PLAN



PLANT PALETTE

