



INTRO TO LANDSCAPE DESIGN PROFESSIONS
ARCH- X472

INSTRUCTOR STEVEN LANG

CAMPUS DESIGN

AIMEE KIRBY - FINAL PRESENTATION

SUMMER 2020

CAMPUS SITE PHOTOS



CAMPUS SITE PHOTOS



CAMPUS SITE PHOTOS



CAMPUS SITE PHOTOS



DIRECTION AWE AND WONDER! A SENSORY EXPERIENCE! ACHIEVEMENTS

PRESERVED NATURAL AREAS TO PROMOTE OUTDOOR, TACTILE LEARNING FOCUSING ON NATURE AND SCIENCE

CREATED A DESIGN THAT CELEBRATES GREEN SPACE AND EARTH STEWARDSHIP

CONSTRUCTED A DRIVE BY DROP OFF AREA DIRECTLY IN FRONT OF ADMIN BUILDING WITH DIRECT ACCESS TO CLASSROOMS

PLANTED TO LARGE SWATHES OF MEADOWS

KEPT PRE-EXISTING OAKS AND CHAPARRAL. PLANTED ADDITIONAL OAKS AND NATIVES, AS WELL AS, REMOVED EUCALYPTUS GROVE FOR FIRE SAFETY

BUILT A SECURE CAMPUS WITH ONE EGRESS MONITORED BY ADMIN ENTRANCE BUILDING

PRODUCED MAIN AND OVERFLOW PARKING THAT DOESN'T IMPEDE THE NATURAL AREAS OR CAMPUS FLOW

FABRICATED A SECURE AND SEPARATE ENTRANCE FOR KINDERGARTEN

WINDOWED THE GRADES 1-5 CLASSROOMS TO CREATE A VIEW OF OCEAN THAT ARE ALSO CENTRAL TO THE COVETED GRANDFATHER OAK

DELINEATED GATHERING AREAS FOR PARENTS AND FRIENDS

DESIGNED GARDEN WALKWAYS THAT PROMOTE FLOW, EXPLORATION AND EXERCISE

ASSIGNED AMPLE SEATING AND TRASH BINS THROUGHOUT CAMPUS

PLANTED ORCHARD AND FARM YARD THAT ALSO SUSTAINS GOATS AND CHICKENS FOR SENSORY LEARNING

EMPLOYED ORCHARD AND GARDEN AREAS FOR FOOD PRODUCTION AND ORCHARD TRAILS FOR WALKING

USED A 20' PROMENADE WITH SINKING BOLLARDS T FOR LARGE WORK EQUIPMENT OR EMERGENCY VEHICLES TO PASS

UTILIZED NATURAL FENCING THROUGH THE USE OF DENSE SHRUBBERY AND PREEXISTING VEGETATION

SPECIFIED A DISCRETE MAINTENANCE BUILDING AND SERVICE ENTRANCE TO CAFETERIA, AUDITORIUM AND MULTI-USE BUILDINGS.

ENGINEERED STREET ACCESS TO AMPHITHEATER AND AUDITORIUM FOR WEEKEND USE

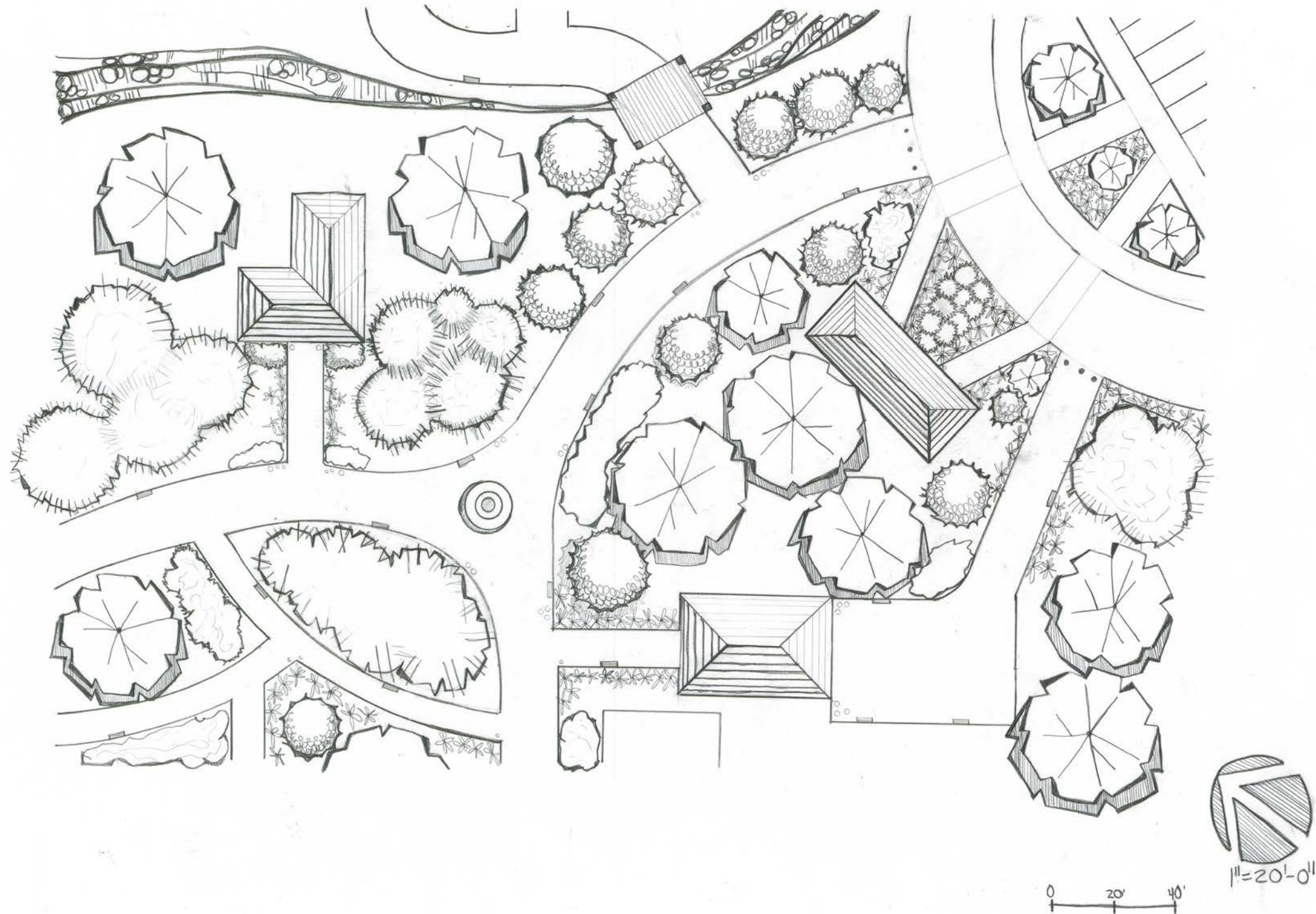
FABRICATED A CENTRAL WATER FEATURE THAT PROVIDES A MULTI SENSORY EXPERIENCE

POSITIONED THE BALL COURTS ACCORDING TO THE SITES WIND CONDITIONS

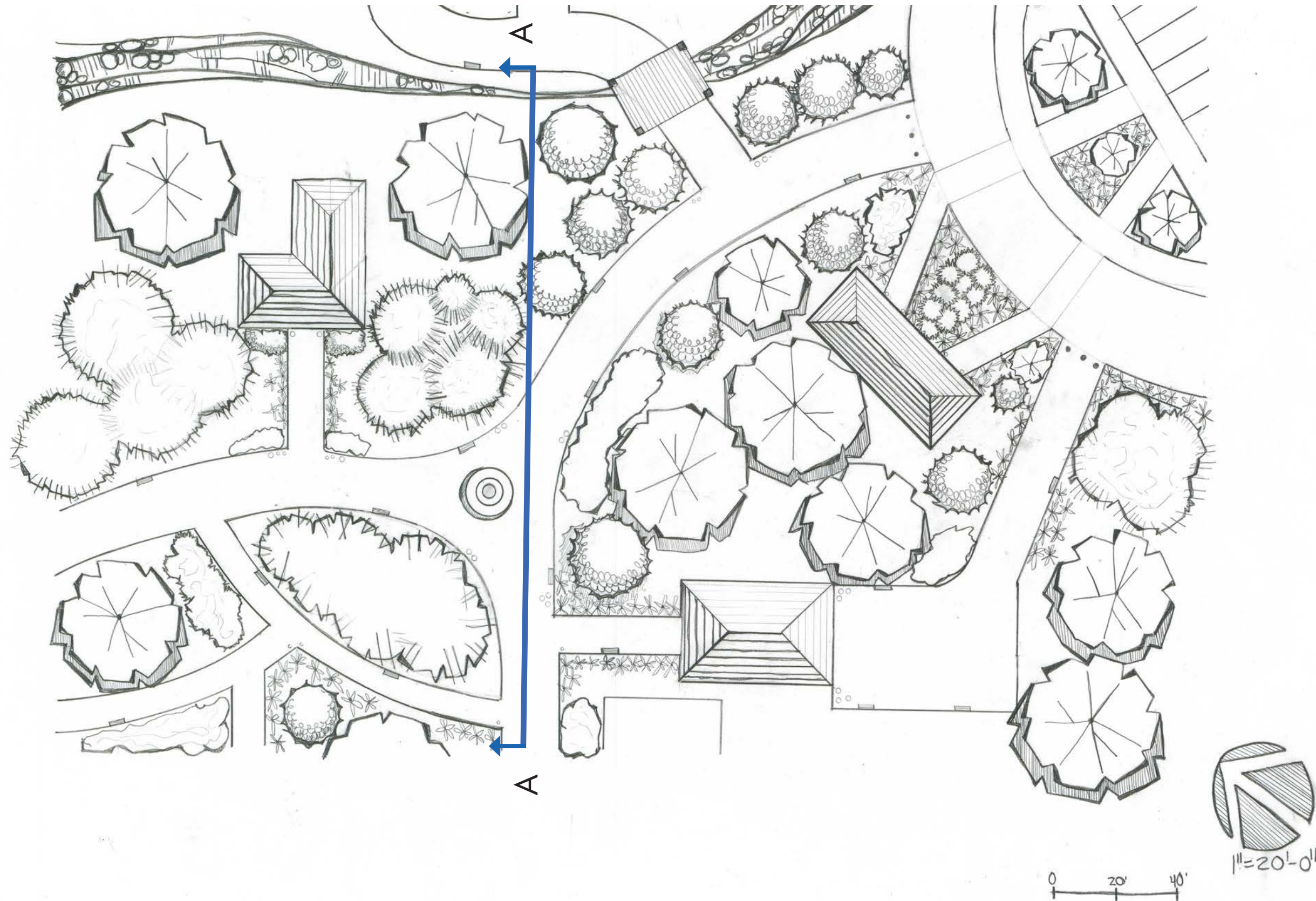
1' = 50'0" CAMPUS PLAN



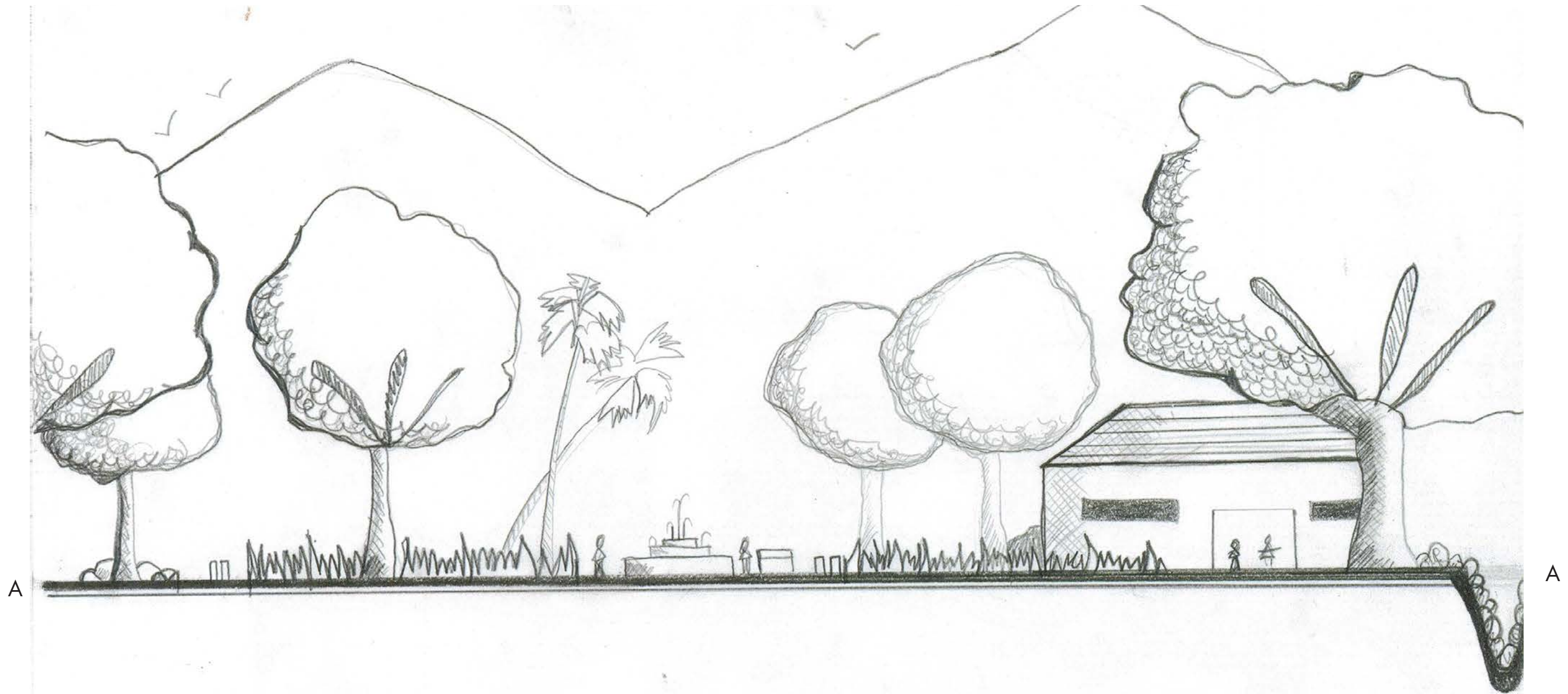
1'=20'0" ENLARGEMENT CAMPUS PLAN



1' = 20'0" SECTION LINE/ ELEVATION NORTHWEST FACING



1' = 20' 0" SECTION LINE/ ELEVATION NORTHWEST FACING



SECTION ELEVATION
1" = 20' 0"
AIMEE KIRBY

CAMPUS MODEL MATERIALS

INSULATION FOAM BOARD

BALSA WOOD

SKEWERS

CLAPBOARD

GRAVEL

REINDEER MOSS

STICKS

DRIED FLOWERS

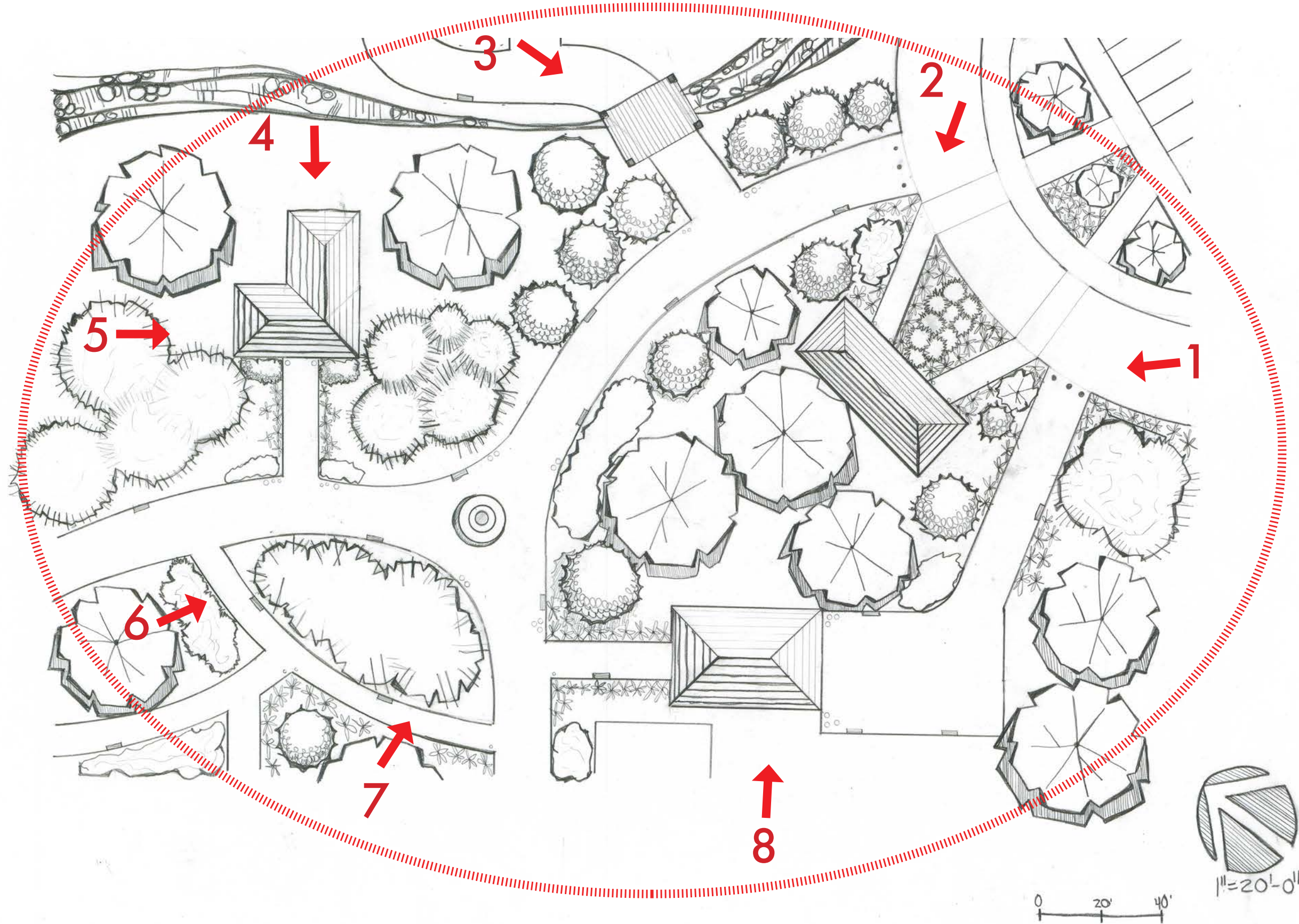
FLORAL TEA

PAINT

HOT GLUE

CLAY

CAMPUS MODEL PHOTO LOCATIONS



CAMPUS MODEL PLAN VIEW



CAMPUS MODEL 1 ADMIN BUILDING / DROP OFF SITE NORTHWEST



CAMPUS MODEL 2 ADMIN BUILDING WITH VIEW OF ARROYO AND BRIDGE NORTH



CAMPUS MODEL 3 BRIDGE, ADMIN AND COURTYARD SOUTH



CAMPUS MODEL 4 ART BUILDING AND MEADOWS WITH OAK TREES SOUTH



CAMPUS MODEL 5 ART BUILDING WITH MEADOW AND GARDEN WALKWAYS SOUTH



CAMPUS MODEL 6 GARDEN WALKWAYS, WATERFEATURE AND CLASSROOM



CAMPUS MODEL 7 EYELEVEL VIEW OF GARDEN WALKWAYS NORTHEAST



CAMPUS MODEL 8 KINDERGARTEN CLASSROOM AND ENTRANCE FROM ADMIN NORTHEAST



AIMEE KIRBY

UCLA EXTENSION

SUMMER 2020