



TONGVA PARK

CHAN NGUYEN

DESIGN GRAPHICS 3 - SPRING 2021

INSTRUCTOR: LAURA RAZO



Once a large, flat parking lot across from Santa Monica City Hall, Tongva Park has gentle hills, curved paths, mature trees, and a mix of native and drought-tolerant plants.

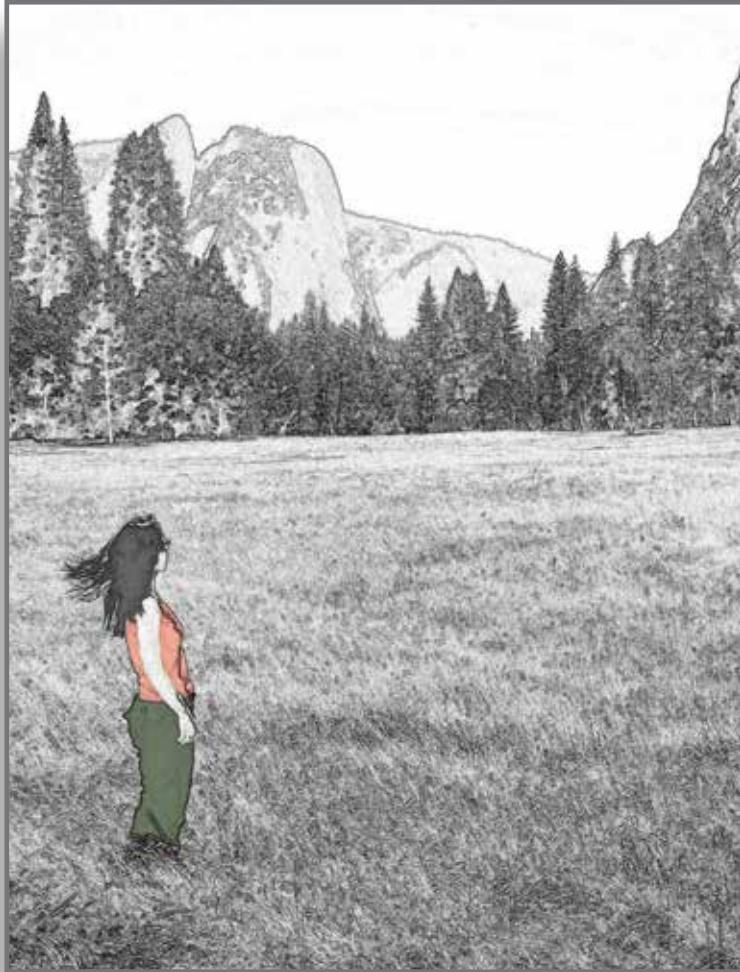
The park opened in 2013 and was designed by James Corner Field Operations.



Tongva Park is a 6.2-acre public park in Santa Monica, California. It is named after the Tongva people, who are the indigenous people of the Los Angeles basin and the southern Channel Islands.



The park is a unique example of an urban park design that takes inspiration from the organic shapes and natural topography of the region, as well as the artifacts of the indigenous people.



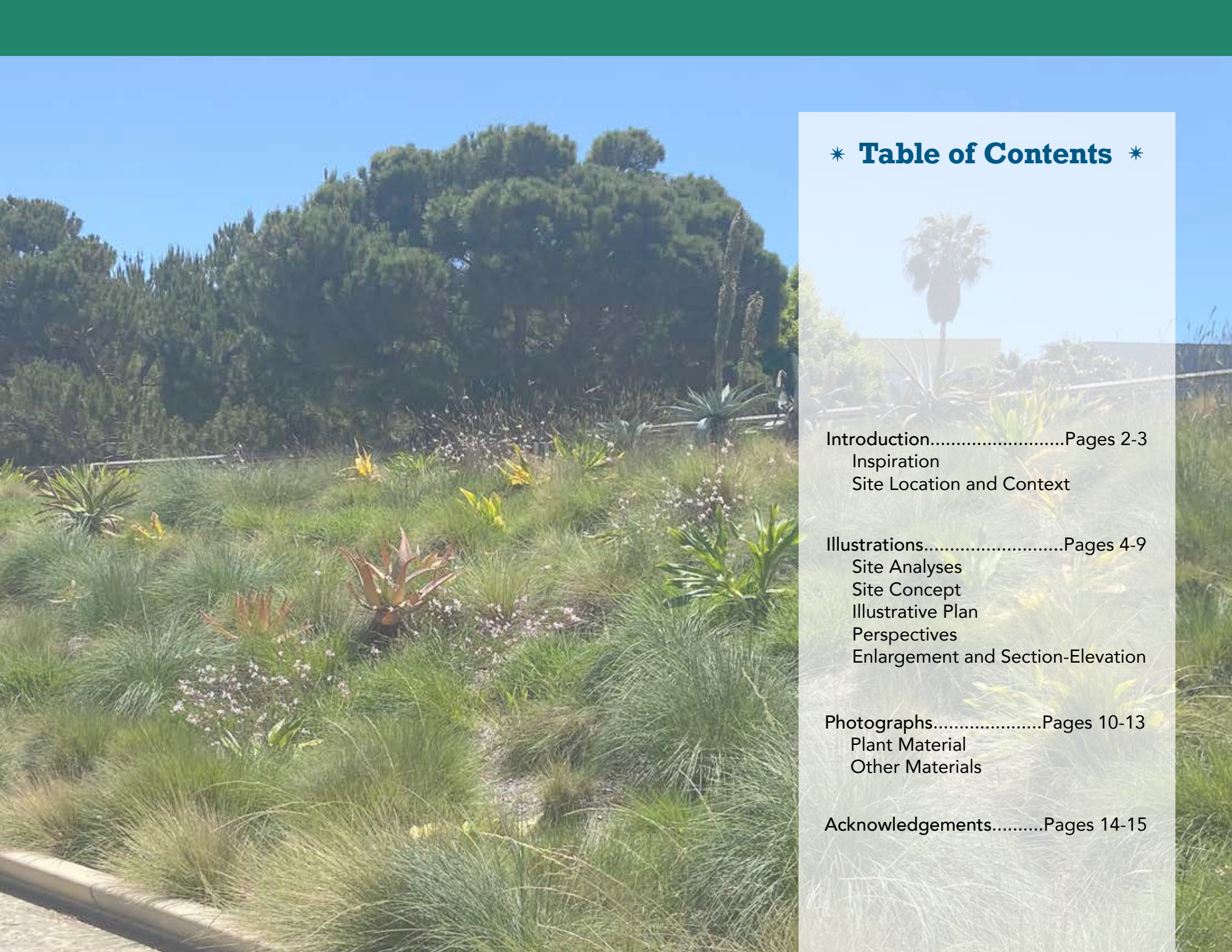
In Yosemite Valley

Chan Nguyen is an aspiring landscape architect. She enjoys gardening, riding bikes, eating spicy food, and visiting national parks and ancient ruins.

Born in Vietnam, Chan has lived in Minnesota and New York, but has spent most of her life in California. She loves the sunshine, plant life, ethnic food, and diversity of Los Angeles.

Chan hopes to someday design public spaces, particularly parks and schools.

She is a recovering lawyer.



* **Table of Contents** *

Introduction.....Pages 2-3
Inspiration
Site Location and Context

Illustrations.....Pages 4-9
Site Analyses
Site Concept
Illustrative Plan
Perspectives
Enlargement and Section-Elevation

Photographs.....Pages 10-13
Plant Material
Other Materials

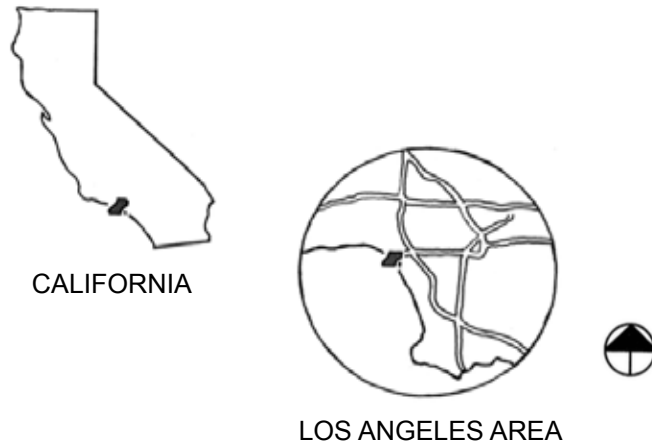
Acknowledgements.....Pages 14-15



The Tongva people have lived in the Los Angeles basin and the southern Channel Islands for thousands of years. Prior to European invasion and colonization, their land stretched from the islands and coast, inland to the Arroyo Seco, and beyond. The Tongva were an influential people, who, like other indigenous peoples, had a reciprocal and respectful relationship with the land, plants, and animals.

The park's arroyo-inspired design can be seen in the curved paths, hills, and mounds, which wind, rise, and fall through the park much like water running through hills and valleys. The shapes and forms in the park are also evocative of Tongva life -- hills and mounds are reminiscent of te'aats (canoes) and the viewing nests and climbing structures call to mind the Tongva's woven structures and crafts.

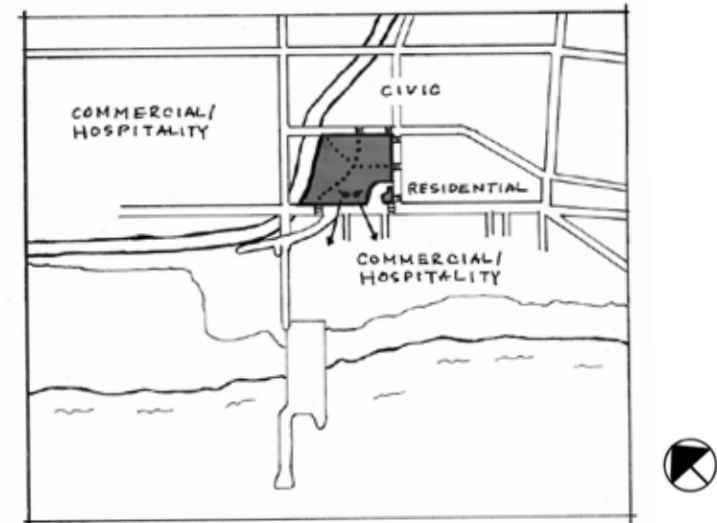




Location

Tongva Park is located in the southern California beach city of Santa Monica. It is 11 miles north of L.A. International Airport (LAX), 15 miles west of downtown, and 40 miles northwest of Disneyland.

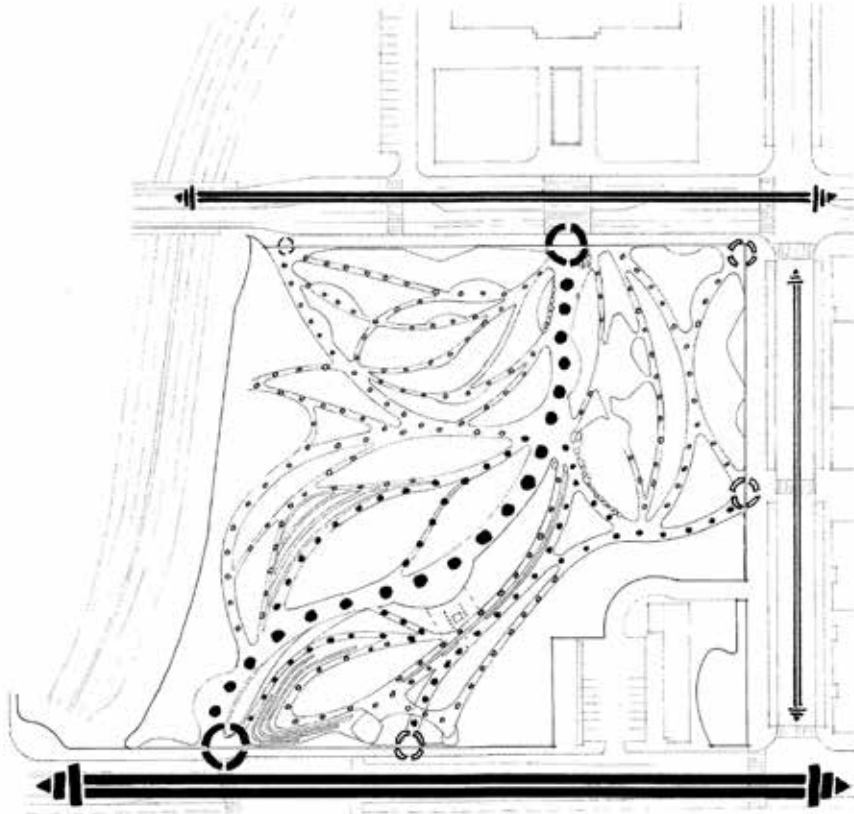
1615 Ocean Avenue, Santa Monica, CA 90401



Context

The park is bordered by Santa Monica City Hall and the 10 freeway on two sides, and by residential, commercial, and hospitality buildings on the other sides.

The area hustles and bustles all day long with workers, residents, tourists, and beachgoers.



Vehicular Circulation
Pedestrian Circulation
Access Points

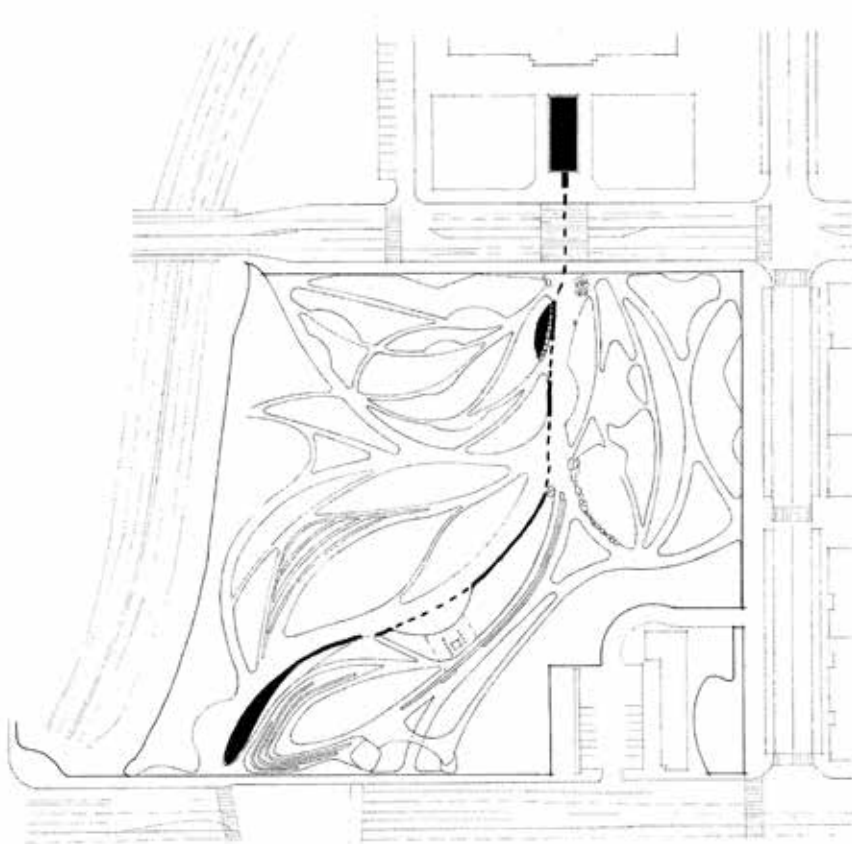
The primary pedestrian circulation bisects the park and connects City Hall to Ocean Avenue.



Amenities

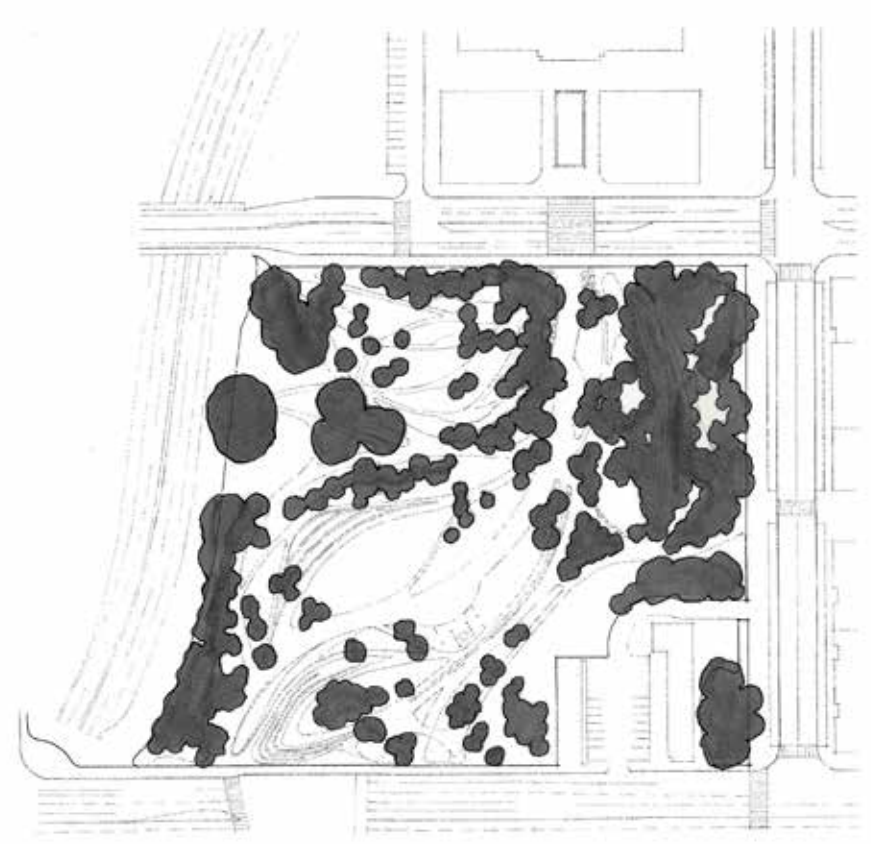
-  Benches
-  Bike racks
-  Picnic tables
-  Restrooms
-  Trash or recycling receptacles
-  Water fountain





Water Flow

Running alongside the primary pedestrian circulation, water flow similarly connects City Hall to the park. The rectangular fountain at City Hall can be considered the "source" of the water, from which it flows through the park, symbolically through hills and valleys, towards the ocean.

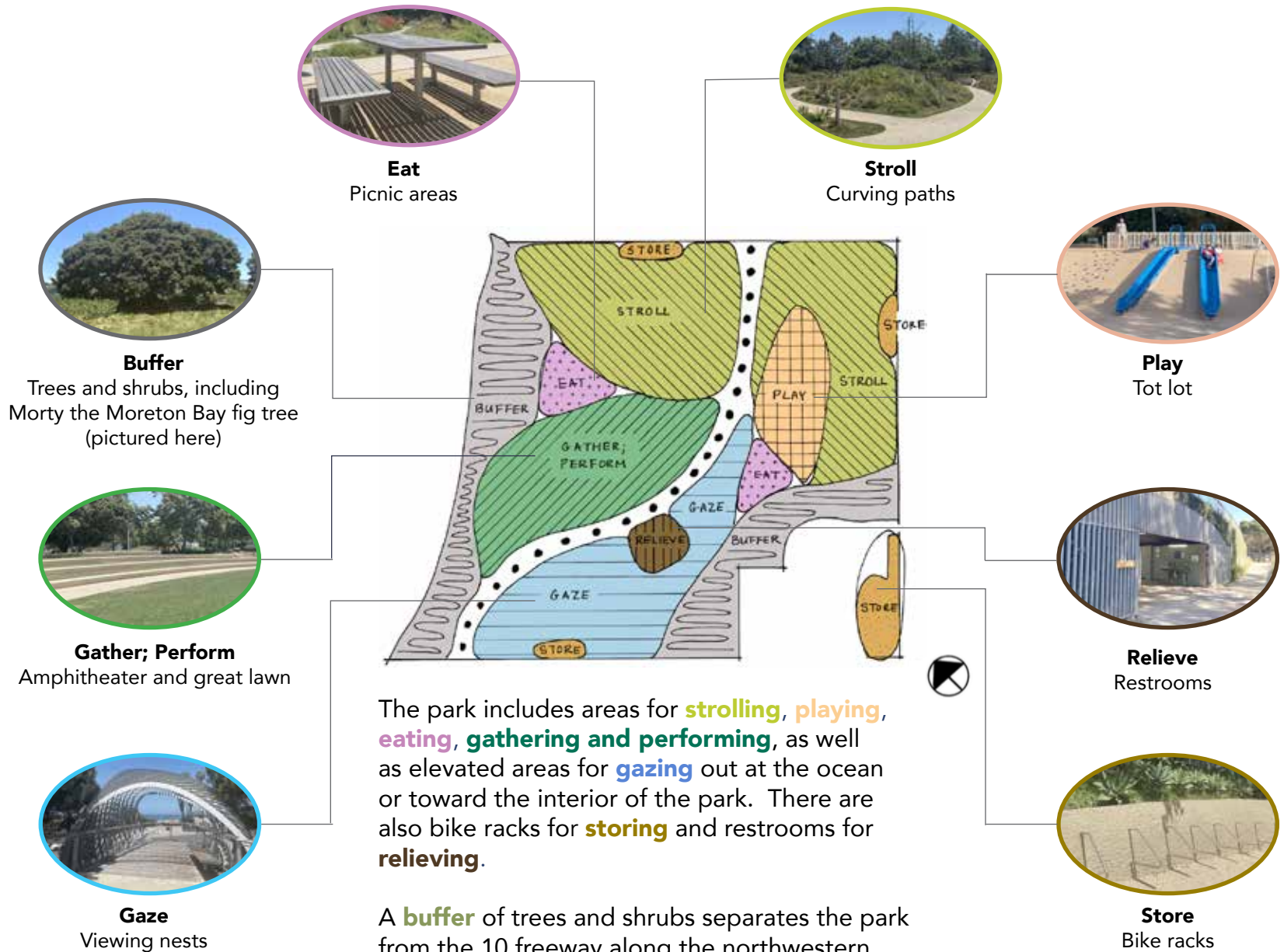


Tree Canopy

The park's tree canopy includes Moreton Bay fig, ficus, palm, sycamore, pine, olive, strawberry, and other flowering trees. Densely-covered areas offer shade and privacy, while open areas provide space for gathering and sunning.



Site Concept



The park includes areas for **strolling**, **playing**, **eating**, **gathering and performing**, as well as elevated areas for **gazing** out at the ocean or toward the interior of the park. There are also bike racks for **storing** and restrooms for **relieving**.

A **buffer** of trees and shrubs separates the park from the 10 freeway along the northwestern edge, and from the commercial and hospitality businesses in the southern corner.





Perspective 1:
Tot lot area near Main Street



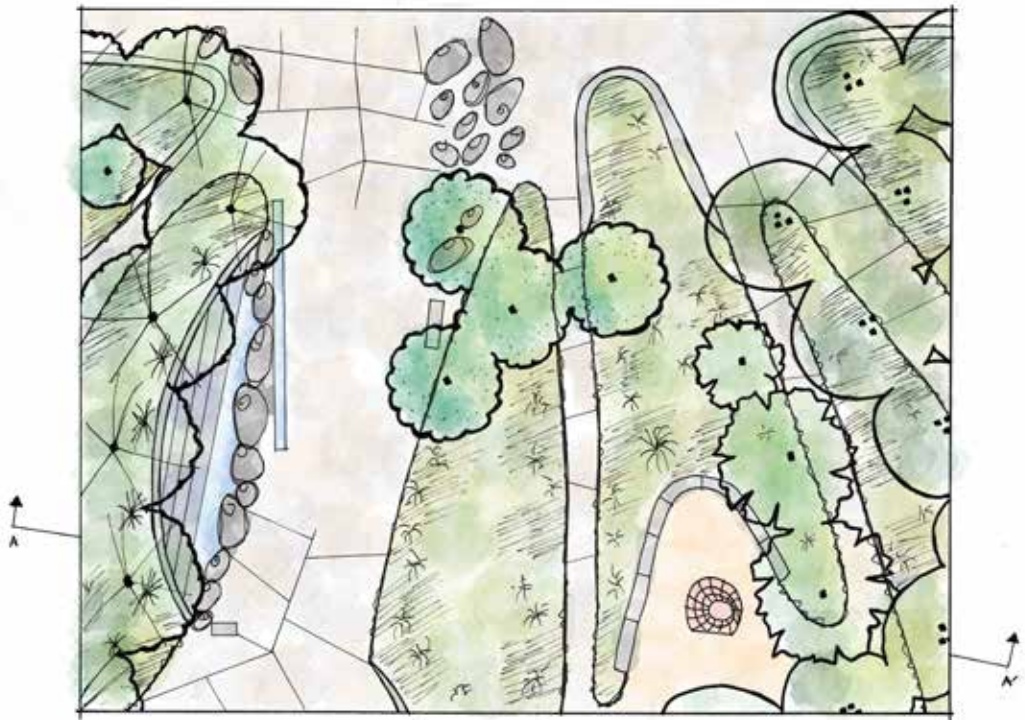
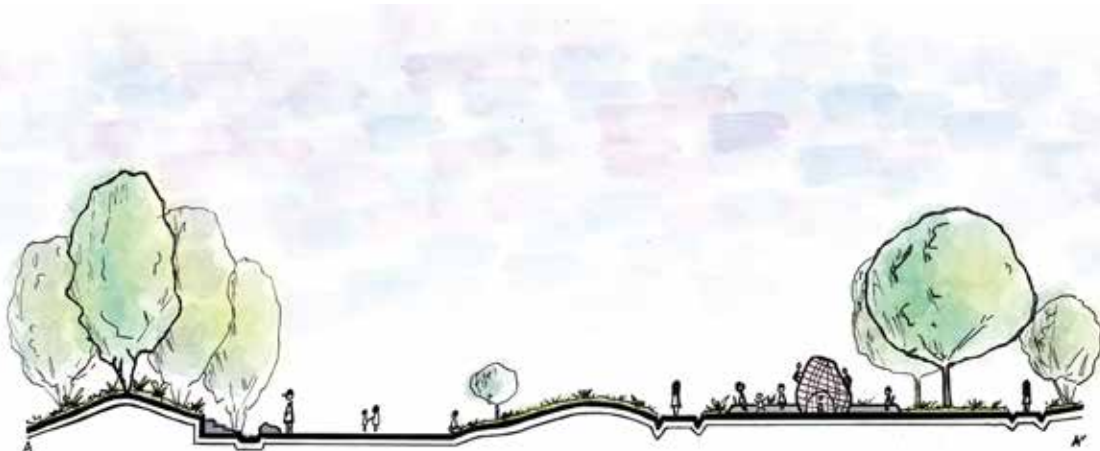
Perspective 2:
Tiered fountain near Main Street



Perspective 3:
Curved paths behind fountain



Key Map



Tiered fountain and tot lot area near Main Street

Plant Material



Palms



Sycamores



Vines



Combination of bird of paradise, bougainvillea, agaves, and grasses



Lilies



Agaves



Meadow of aloes, agaves, flowering perennials, and grasses



Ficuses



Pines



Aloe tree with amphitheater lawn in the background

Other Materials



CONCRETE AND STONE
Textured retaining wall



Tiered fountain (without water) and a border of boulders



Amphitheater seating



Boulders at northeast access point



Distinctions in paving



WOOD
Bridge



Sculpture



METAL
Planters



Bench



Light fixture



Climbing structure



All photographs and drawings are my own, except for those on page 2.

Photo credits on page 2, clockwise from top left

- (1) Tomol Crossing: National Park Service, Channel Islands National Park, Robert Schwemmer/NOAA;
- (2) View of Santa Monica bay and the Malibu coastline: Santa Monica History Museum, Outlook Collection;
- (3) Replica of Tongva granary: <https://smbasblog.com/the-tongva/>;
- (4) Arroyo Seco watershed: <https://www.arroyoseco.org/images/Arroyopic.jpg>; and
- (5) Red-tailed hawk: <https://ebird.org/species/rethaw>, Jonathan Eckerson.




Thank You

To my graphic design instructors Laura Razo, Rebecca Schwaner, and David Squires.
I have drawn exponentially more in the last nine months than in my whole life before that.
I've learned so much and I'm having a lot of fun.

To my classmates for the inspiration and motivation.

To my family for the time and space to do this work.



*"The past is a source of knowledge, the future is a source of hope."
- Stephen Ambrose*