



TONGVA

ANA FERNANDEZ

DESIGN GRAPHICS 3, RAZO

SPRING '21



"You can't use up creativity. The more you use, the more you have."

-Maya Angelou¹

Introduction



2

This deliberate effort to connect the past with the present is evident throughout the park. To me, the park is also a connection between the sea and the land, as it is bordered by the Pacific Ocean to the west and Santa Monica City Hall to the east.

The 6-acre park was designed by James Corner Field Operations and completed in 2013. Although it takes references from the past, today, it is a space to be shared by all.

The Tongva people were the original inhabitants of the land where Tongva Park sits, and much of the area throughout the Los Angeles area. The park's design and features are inspired by the Tongva's huts and canoes. The park's curvilinear forms are influenced by the historical arroyo on which it sits.



3



A couple years ago I realized I was missing a great deal of inspiration in my life but I wasn't sure what it was I needed, exactly. I knew I was interested in design and on a more intimate level, I loved the fulfillment of nurturing a plant or a garden. I decided to pursue my interests in order to perhaps regain the inspiration I lacked. What I've learned, accomplished, felt and the people I've met along the way have given me so much more. I am continually inspired to create.

I hope to design spaces that gently command us to observe and feel.

-Ana Fernandez

Table of Contents

1 Site Analysis

6 Rendered Sketches

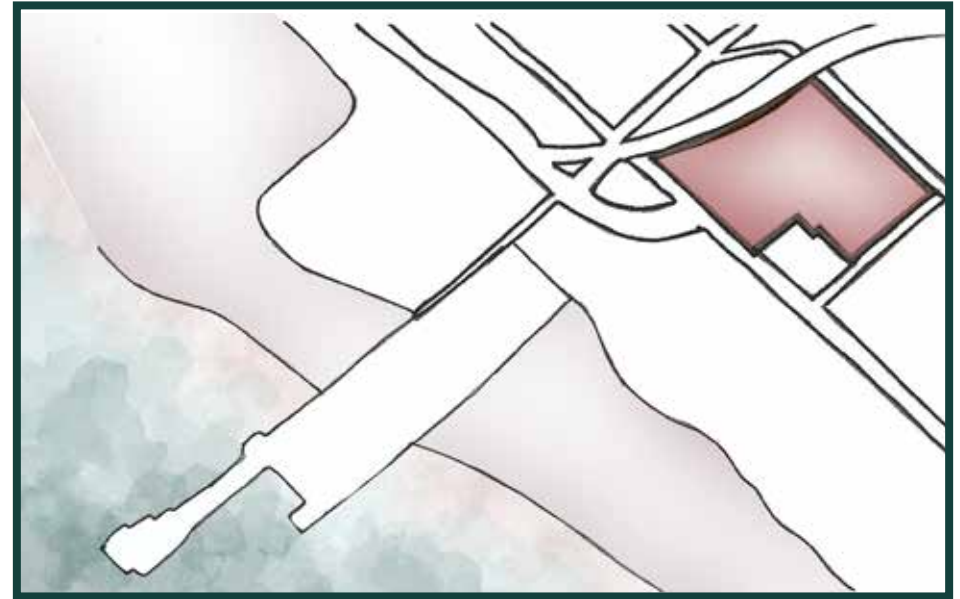
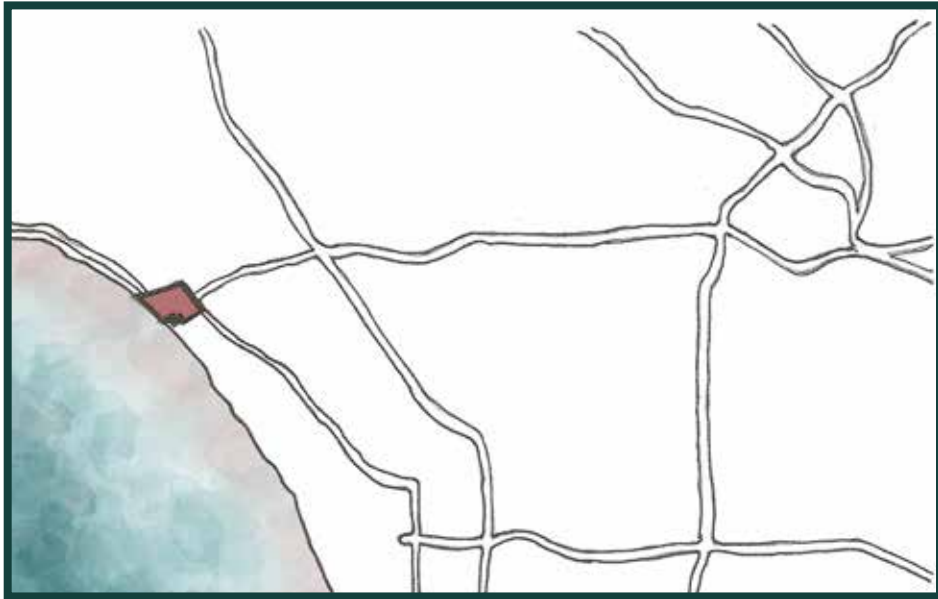
10 Park Features

17 Acknowledgements



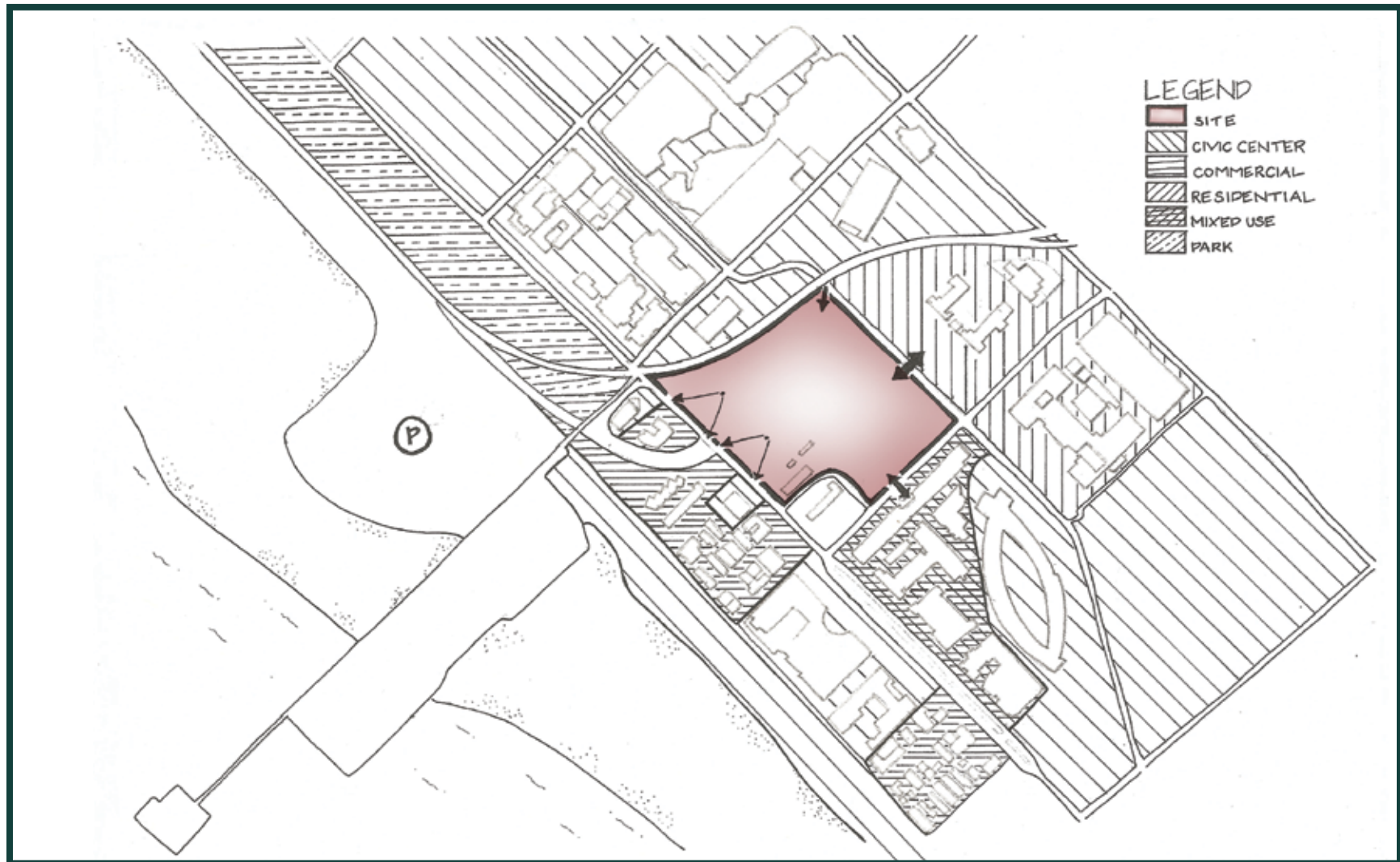


Location

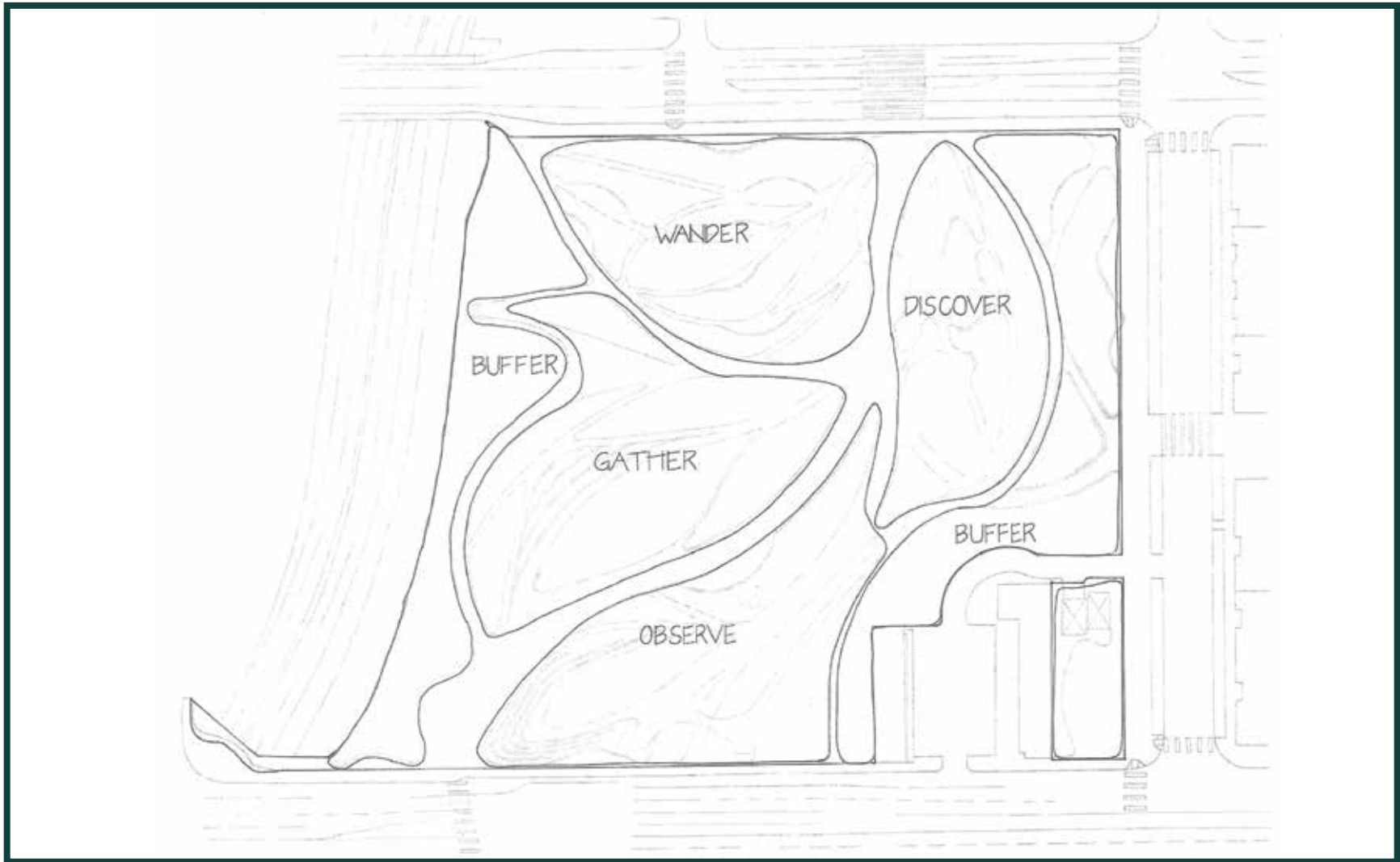


1615 Ocean Avenue, Santa Monica, California. Tongva Park is adjacent to Pacific Coast Highway and the I-10 Freeway. Its proximity to the beach and the pier make the park easily discoverable by pedestrians and rewards them with various amenities, especially the overlooks.

Context Diagram



Concept Diagram



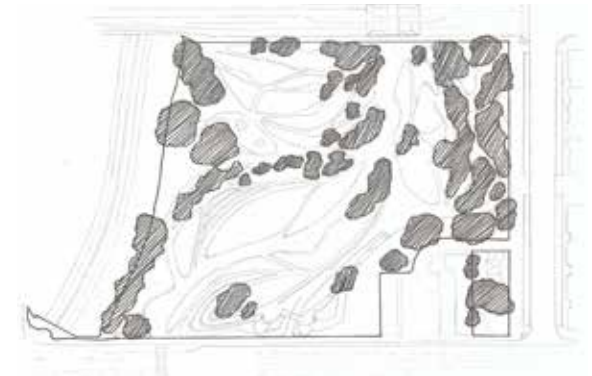
Site Analysis



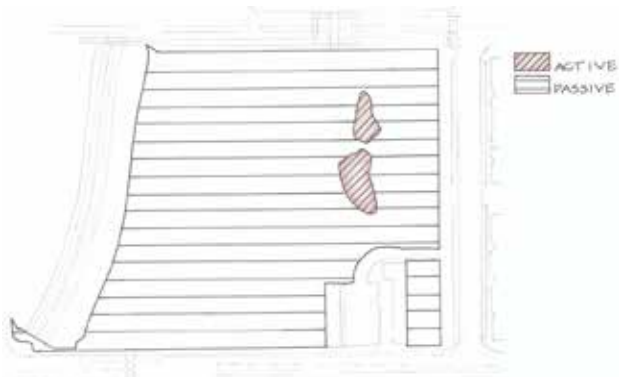
Park Uses



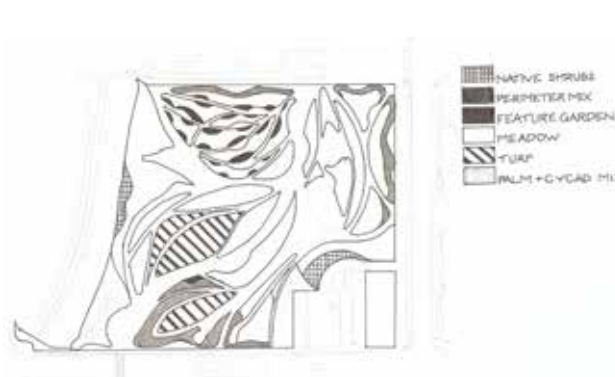
Water Features



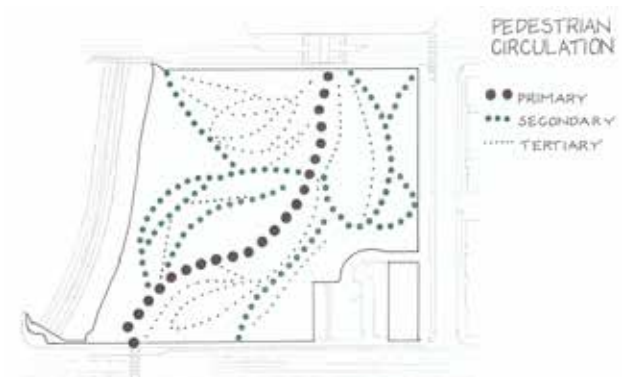
Tree Canopy



Recreation



Plantings



Pedestrian Circulation

Rendered Sketches



Illustrative Site Plan



COLOR ILLUSTRATIVE PLAN

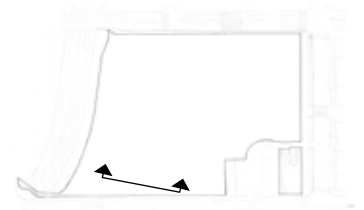




Section /
Elevation



Enlargement



Perspective Sketches



View from southerly
overlook, viewing west

View from public right of
way on Ocean Avenue,
viewing east.



Park Features



Plants and Shrubs



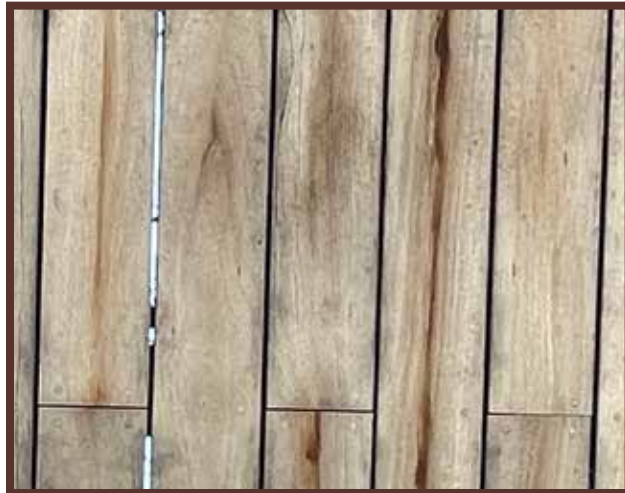
Ground Cover



Trees



Materials



Furnishings



Amenities



Acknowledgements

1. Goodreads.com

<https://www.goodreads.com/quotes/153929-you-can-t-use-up-creativity-the-more-you-use-the>

2. PalisadesNews.com

<https://palisadesnews.com/santa-monica-history-museum-exhibit-honors-l-a-s-first-people/>

3. SantaMonicaHistory.org

<https://santamonicahistory.org/santa-monica-history/>

4. CaliforniaBeaches.com

<https://www.californiabeaches.com/attraction/tongva-park/>

5. ExperiencingLA.com

<http://www.experiencingla.com/2017/11/tongva-park-santa-monica-2.html>

Special thanks to Bryan and Bea.

