



TONGVA PARK

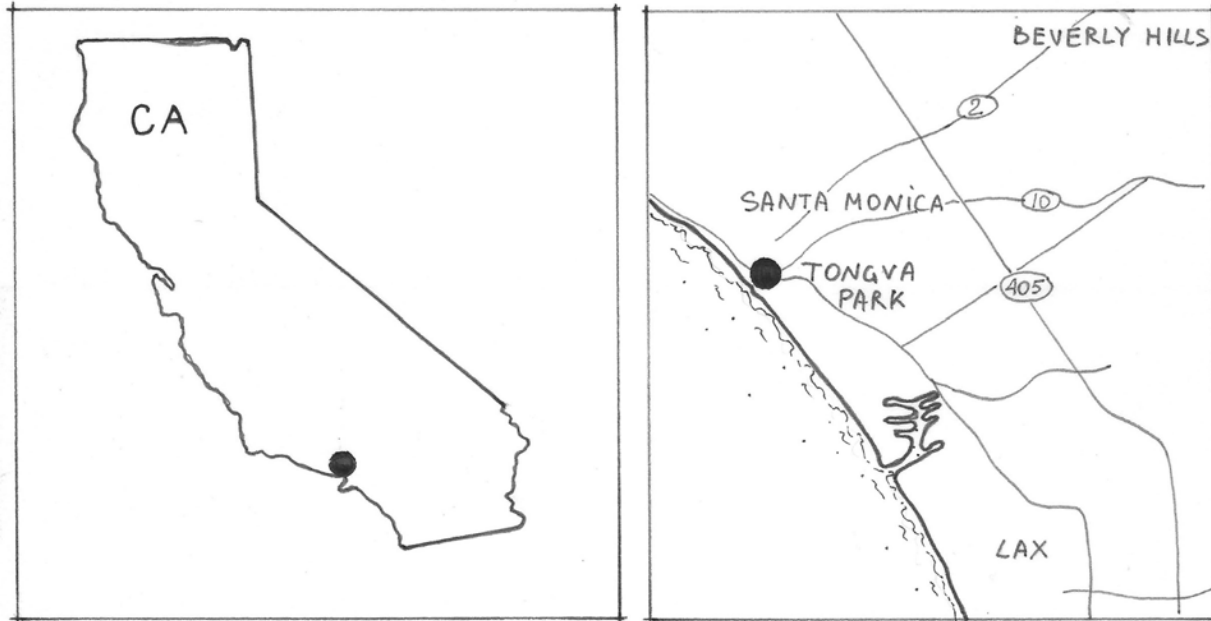
ANNA ASNIS
DESIGN GRAPHICS 3 WINTER 2021
INSTRUCTOR: LAURA RAZO

TONGVA PARK

1615 OCEAN AVENUE



INTRODUCTION



It is really hard to imagine that Tongva Park used to be a flat parking lot. It was designed by James Corner Field Operations, the same firm that designed my favorite New York City's High Line Park. Tongva Park was finished in 2013 and since the day it opened it brings nature, winding paths, water features, playground and places to sit down and enjoy the surroundings to anyone who visits Santa Monica Pier or City Hall.

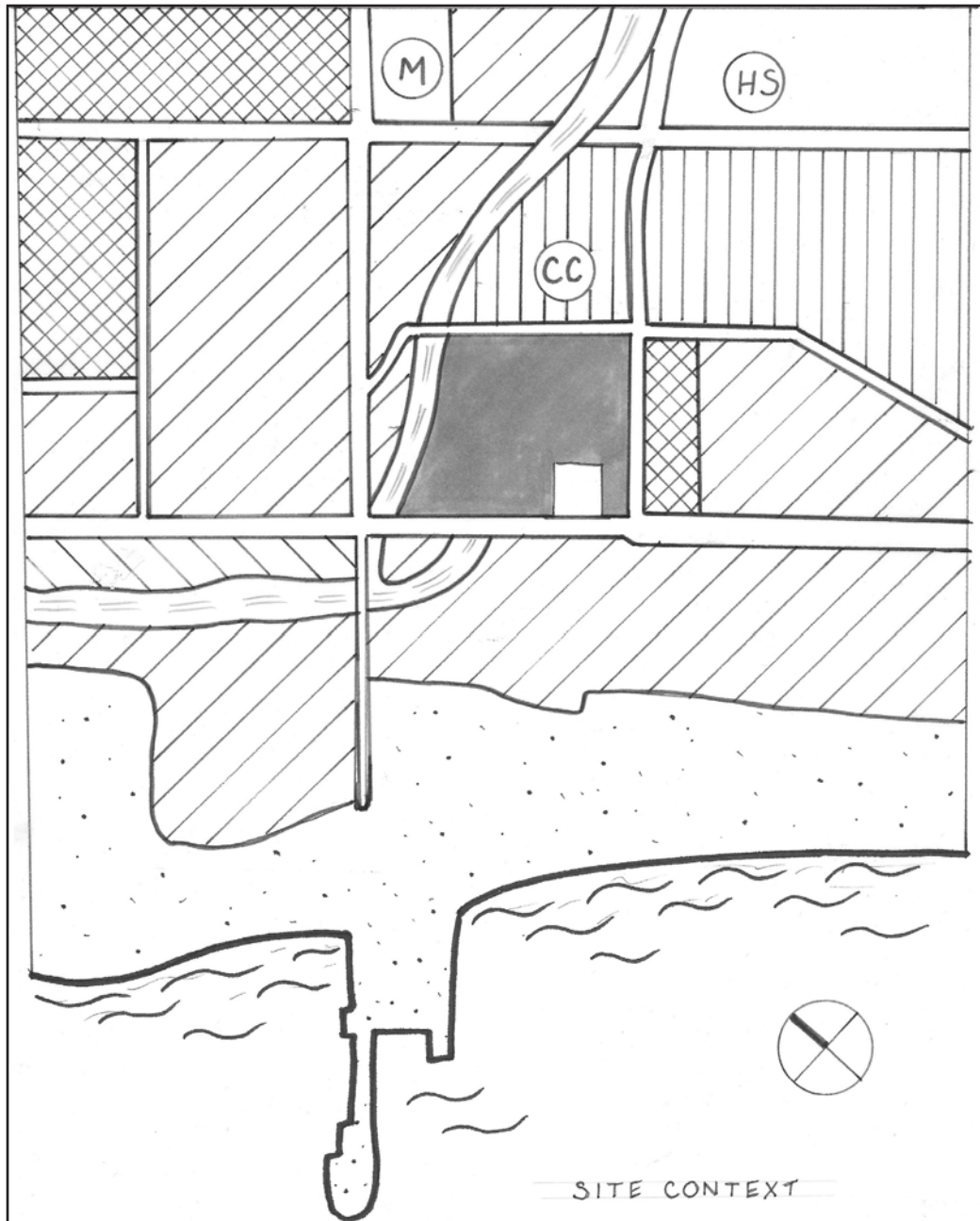



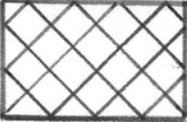



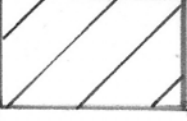
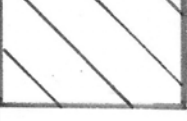
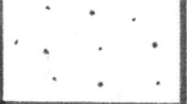
TABLE OF CONTENTS



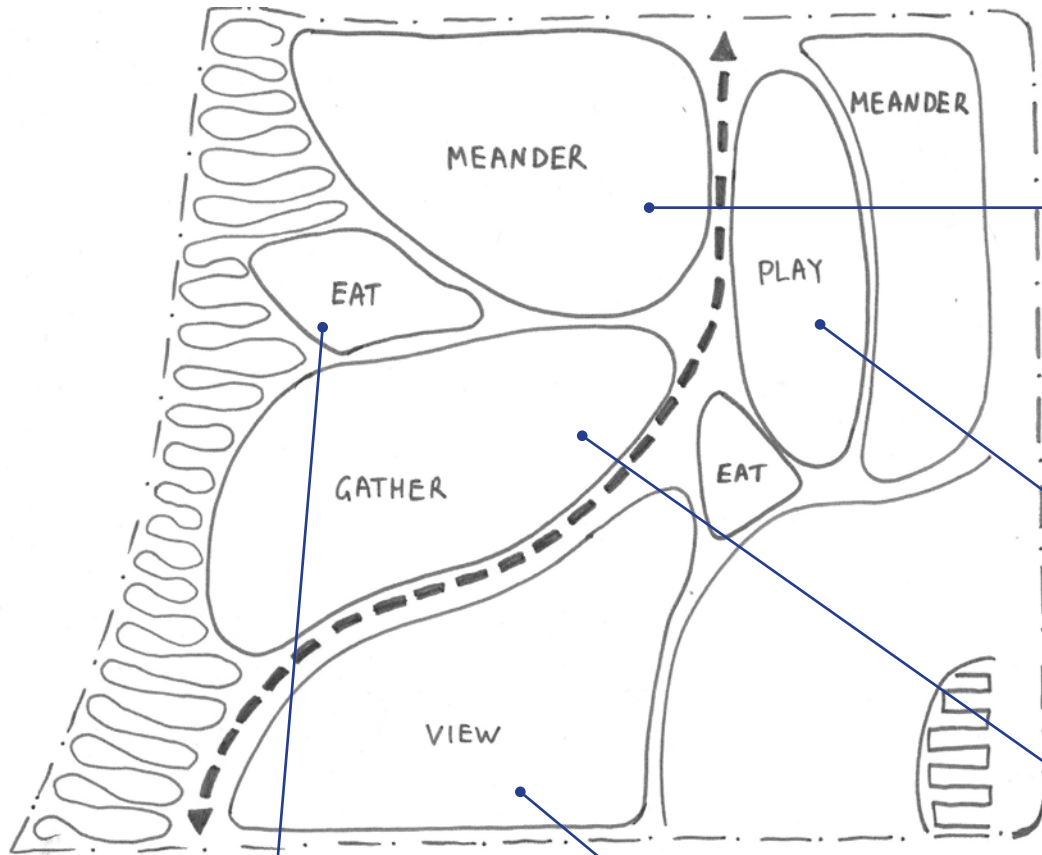
| | |
|-------------------------------------|-----------|
| INTRODUCTION | 3 |
| SITE CONTEXT | 5 |
| CONCEPT | 6 |
| SITE ANALYSIS: WATER | 7 |
| SITE ANALYSIS: AMENITIES: | 8 |
| SITE ANALYSIS: CIRCULATION | 9 |
| EXISTING AND RELOCATED TREES | 10 |
| ILLUSTRATIVE PLAN | 11 |
| ENLARGEMENT | 12 |
| SECTION/ELEVATION | 13 |
| PERSPECTIVES | 14 |
| STRUCTURES | 15 |
| WALLS | 16 |
| BENCHES AND PICNIC TABLES | 17 |
| FLOOR MATERIALS | 18 |
| FOUNTAINS | 19 |
| TREES AND PALMS | 20 |
| PLANT MATERIAL | 21 |
| PEOPLE WHO WORK AT THE PARK | 22 |
| HOMELESS PEOPLE AT THE PARK | 23 |
| ACKNOWLEDGEMENTS | 24 |

SITE CONTEXT

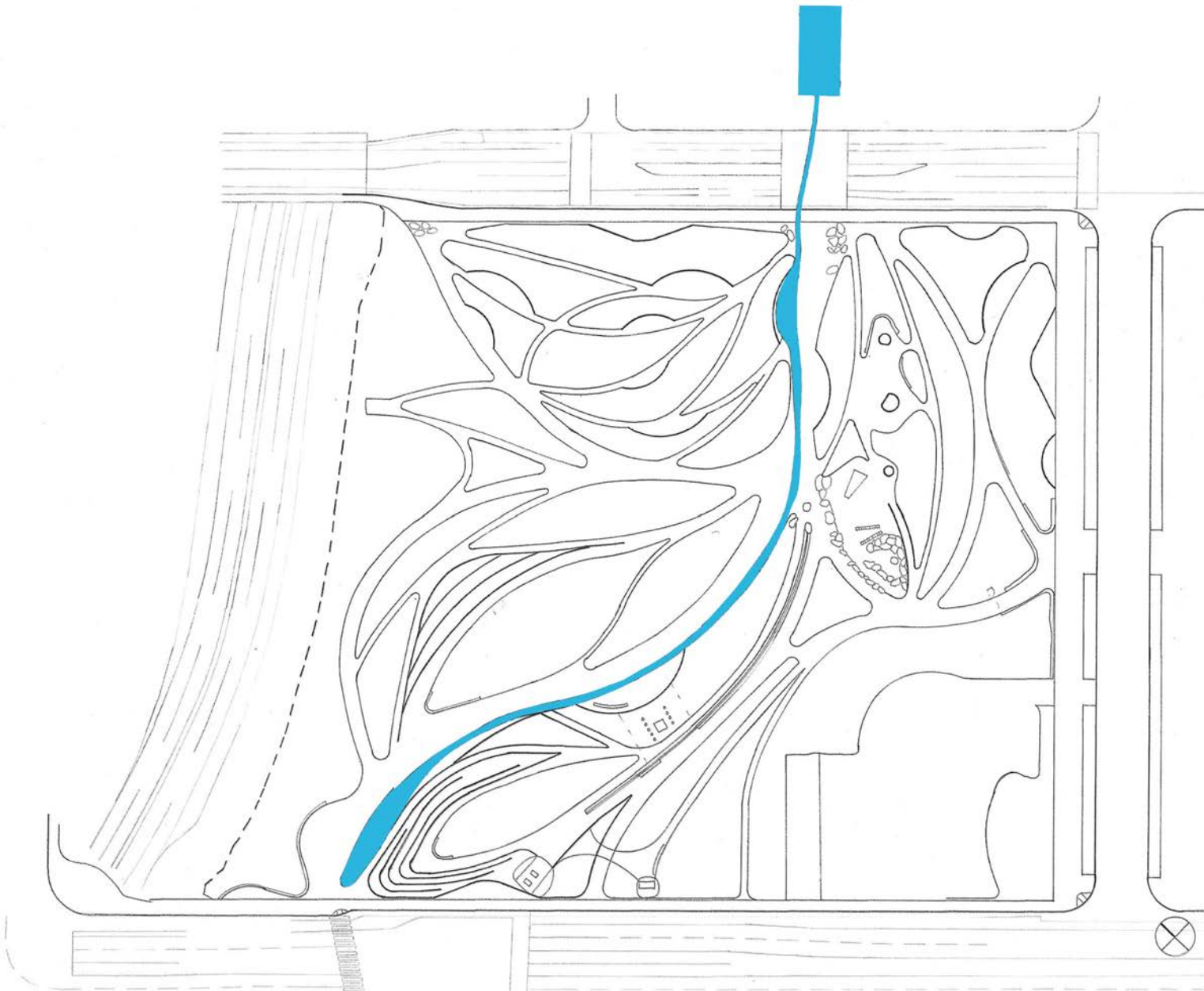


-  SITE
-  RESIDENTIAL
-  CIVIC CENTER
-  METRO STATION
-  HIGH SCHOOL
-  COMMERCIAL
-  GREEN SPACE PARK
-  BEACH AND SANTA MONICA PIER

CONCEPT

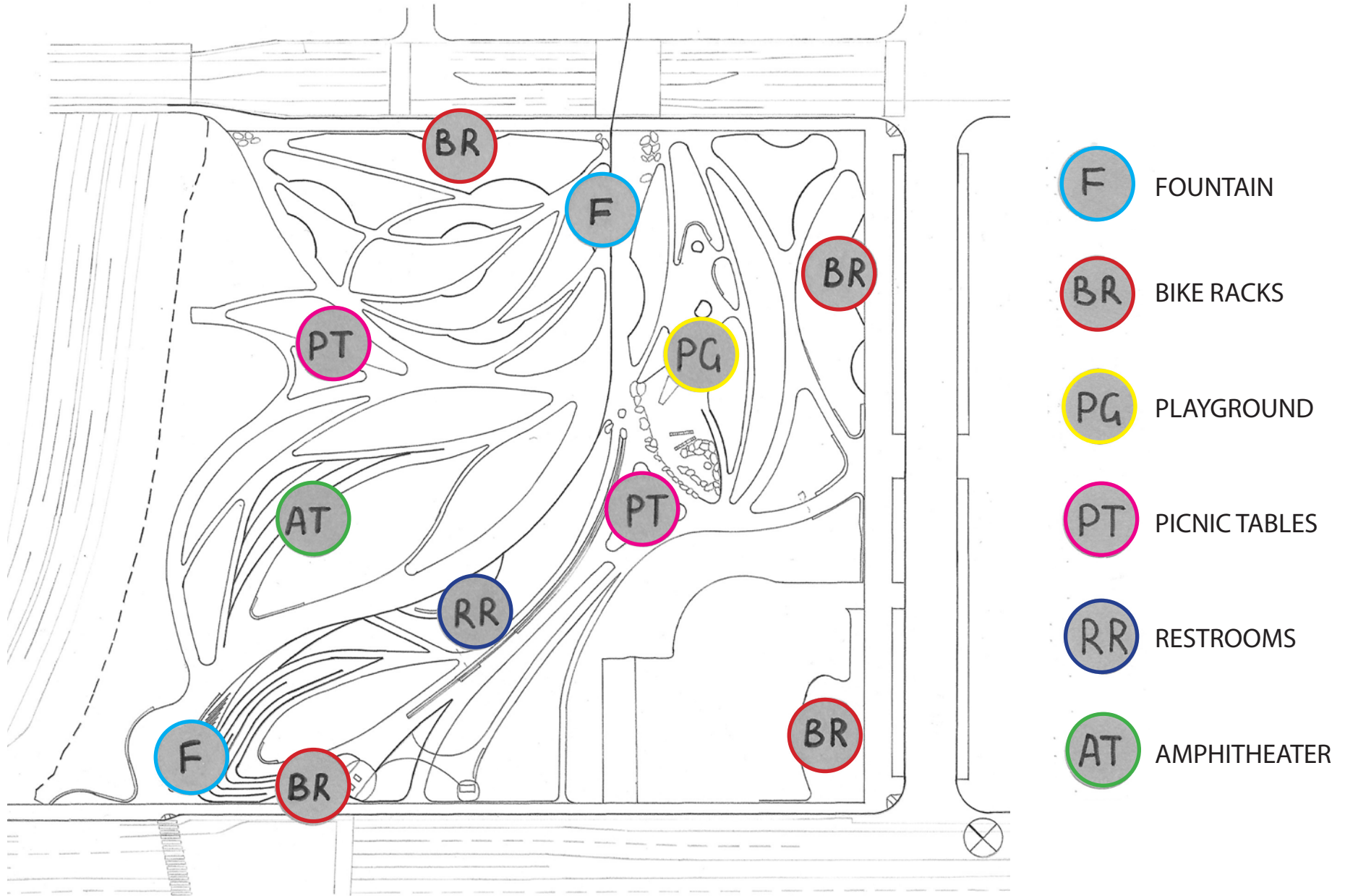


SITE ANALYSIS : WATER

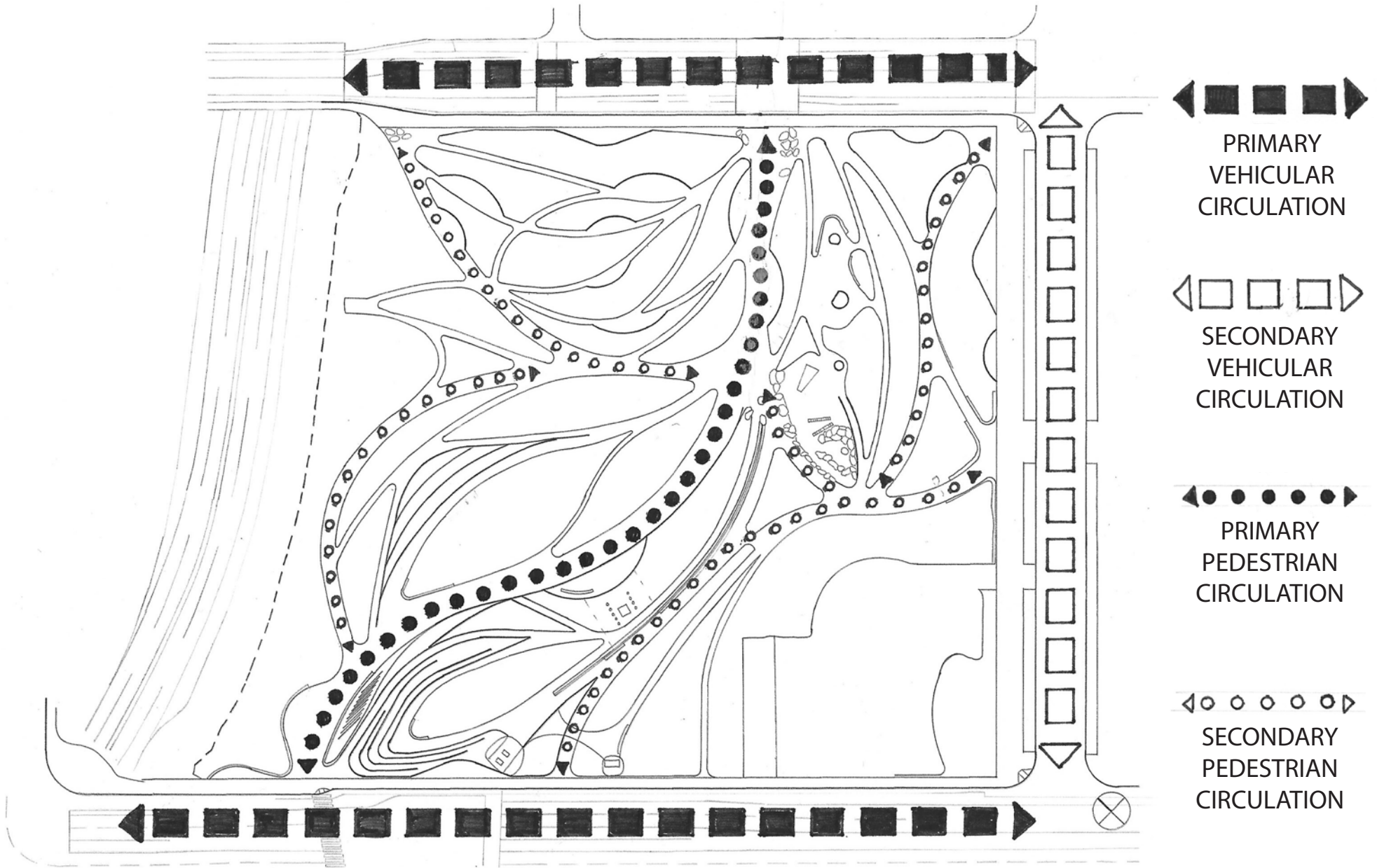


Water is an integral part of Tongva Park. It flows from Civic Center towards the Ocean street. It bisects the park dividing it almost in half. There are two fountains - one at each main entrance and there is a water runnel that connects them.

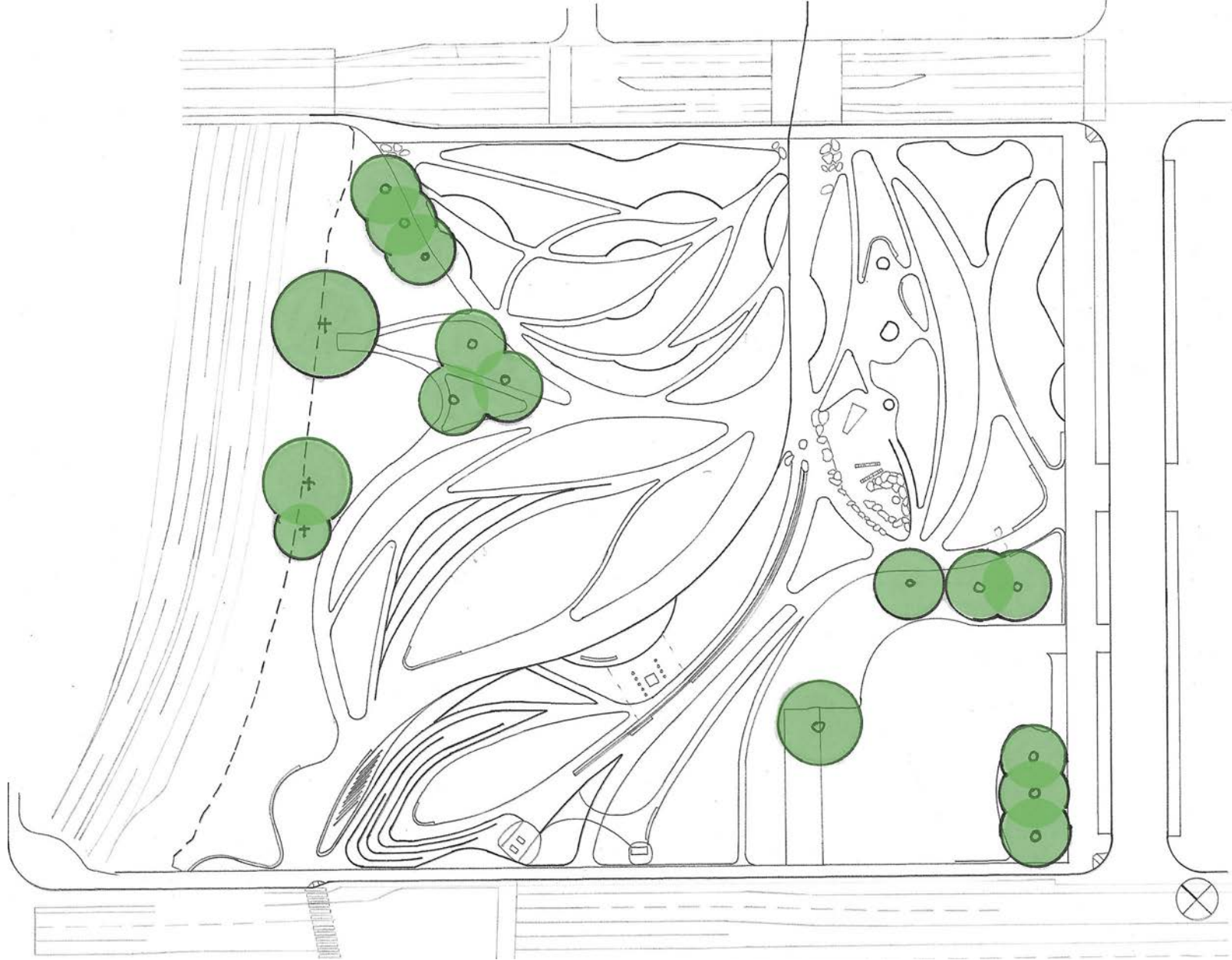
SITE ANALYSIS: AMENITIES



SITE ANALYSIS: CIRCULATION



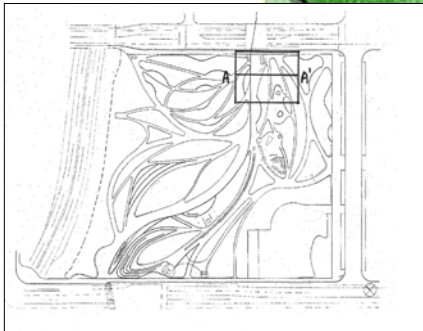
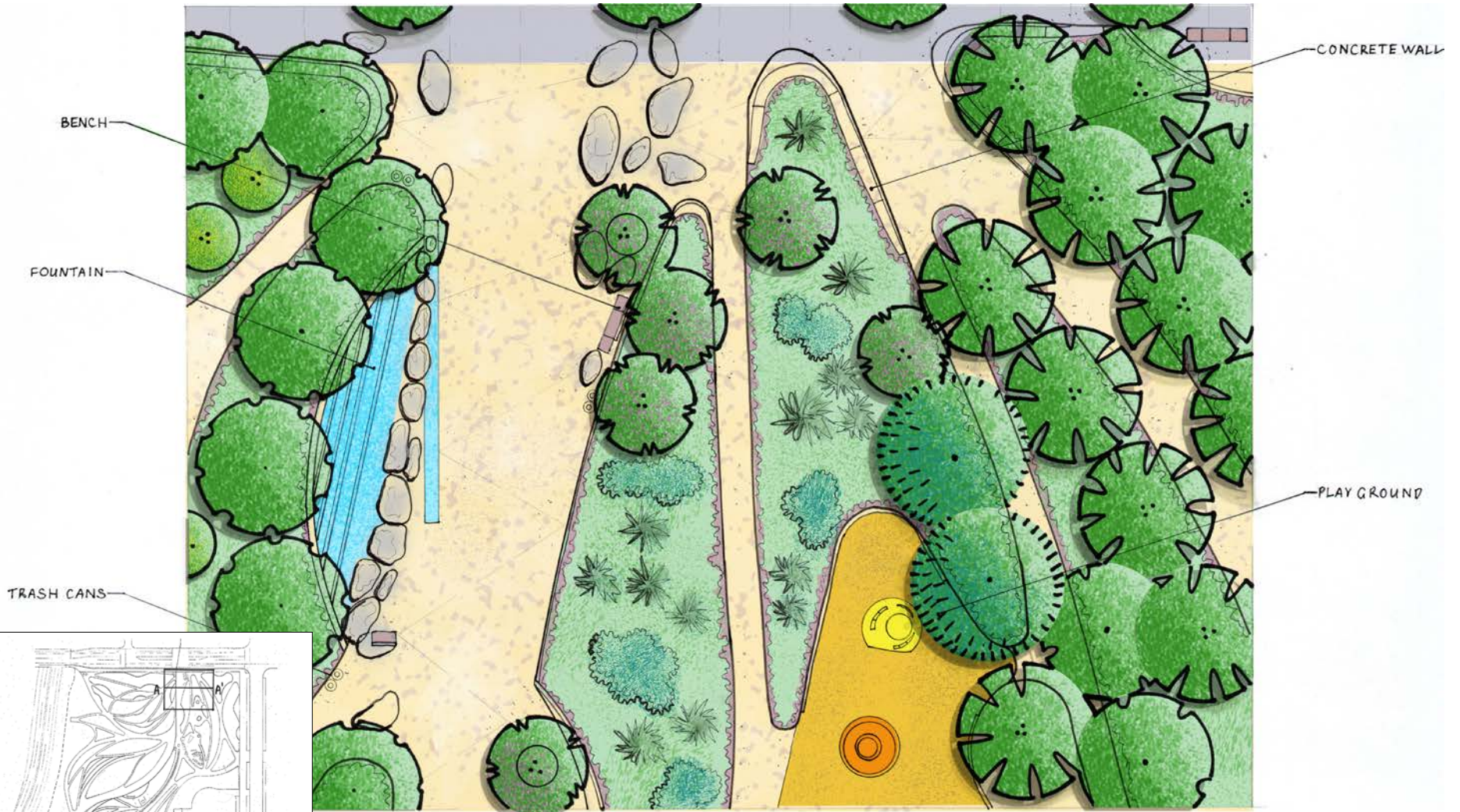
ANALYSIS: EXISTING & RELOCATED TREES



ILLUSTRATIVE PLAN



ENLARGEMENT



KEY MAP

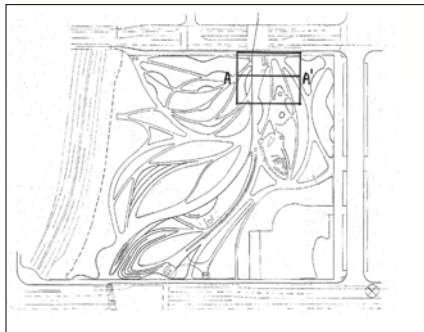
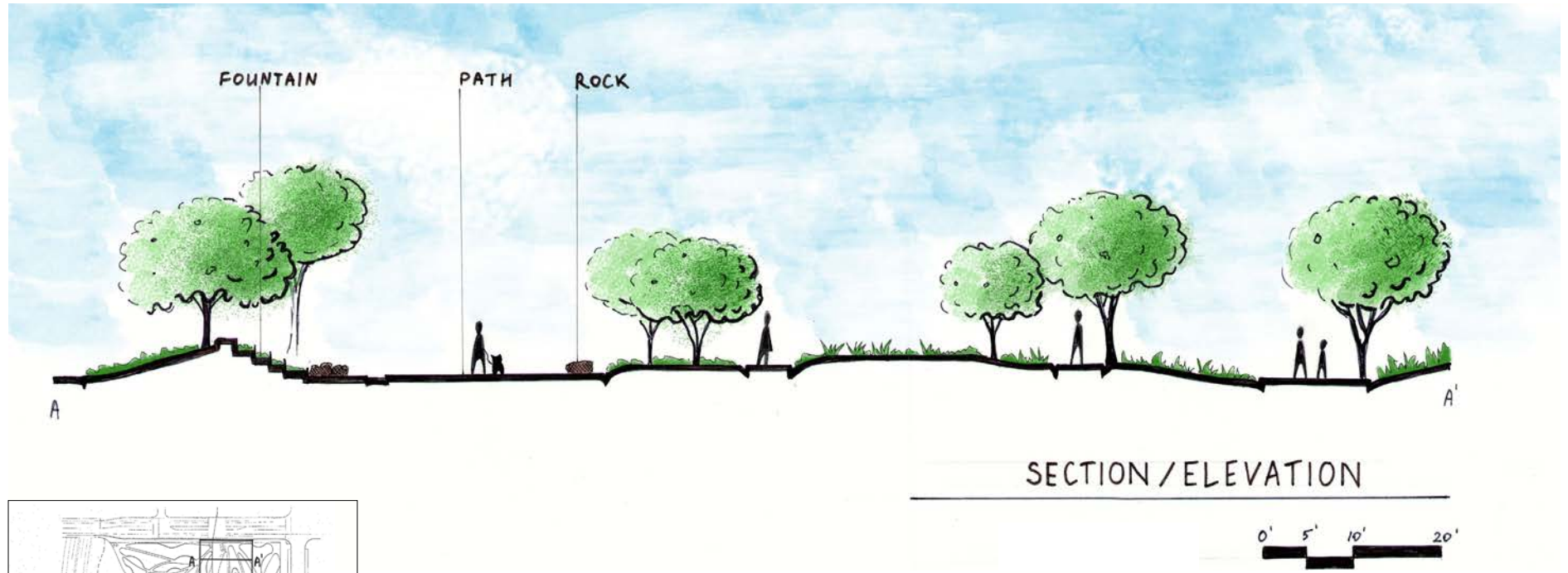
ENLARGEMENT



SCALE 1" = 10'

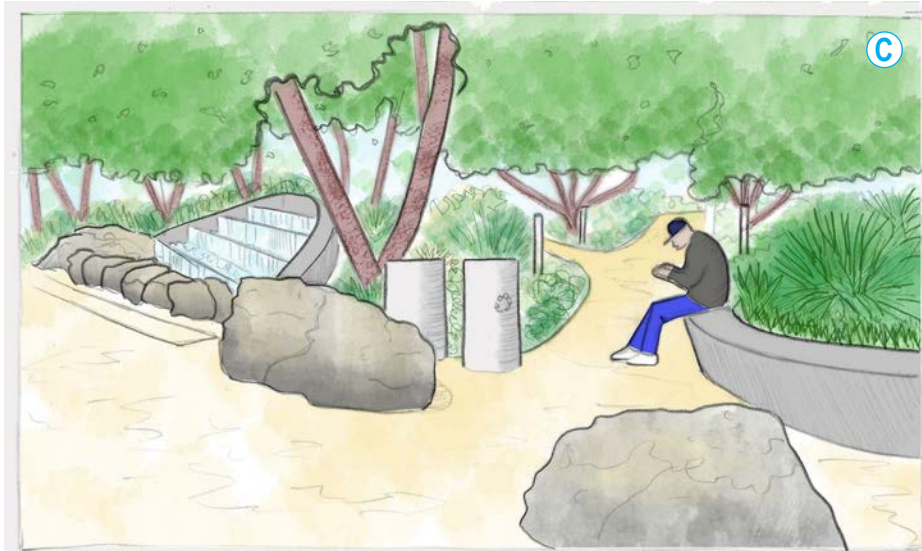
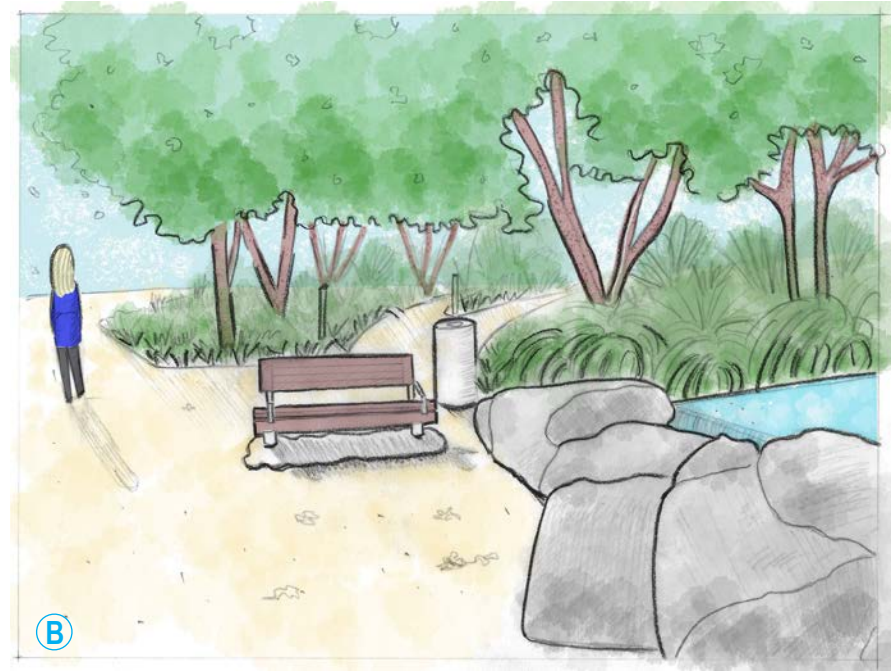


SECTION/ELEVATION

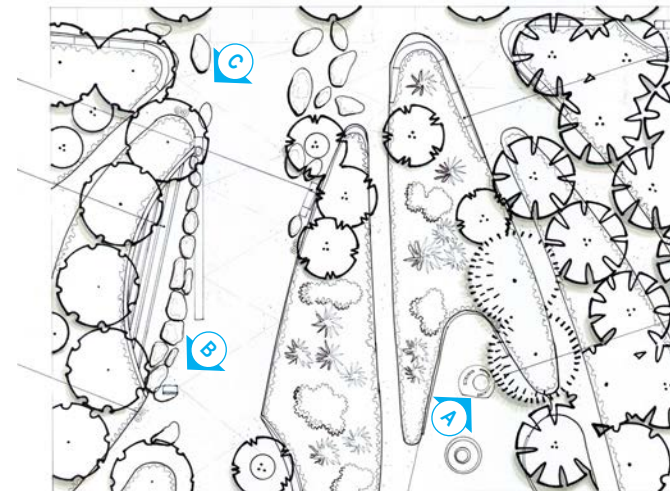


KEY MAP

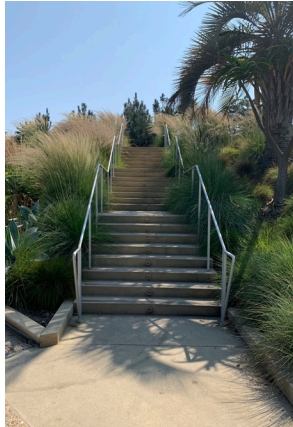
PERSPECTIVES



KEY MAP

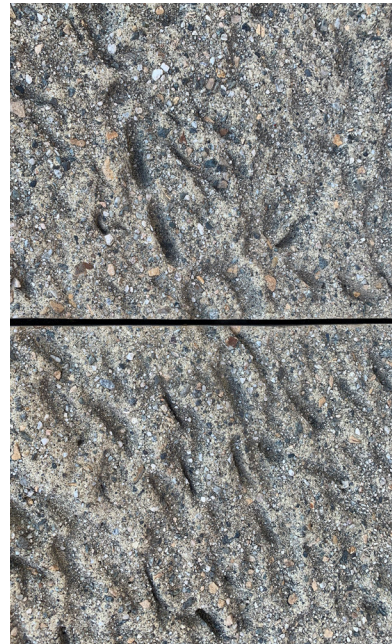
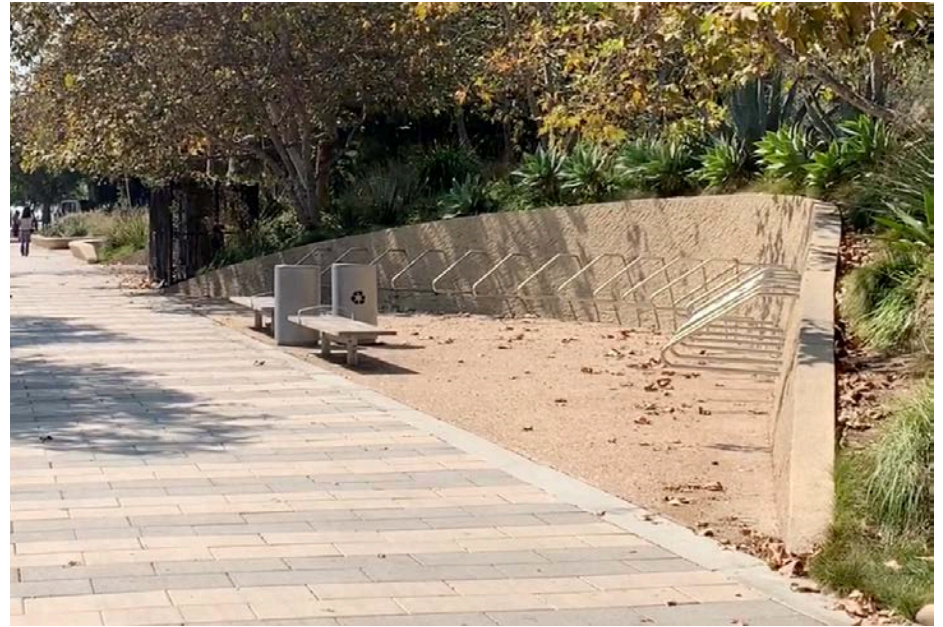


STRUCTURES



Tongva park has a variety of different structure elements that make it unique. Tongva basket weave is seen in viewing platforms and playground structures, curved retaining walls remind us of an arroyo winding through a landscape. It is hard to find any straight lines in the park, but they are seen in the bridge and the staircase.

WALLS



There are many different concrete walls at the park. Vertical walls have an unusual finish that was done by slamming big chains against concrete before it was hardened.

BENCHES AND PICNIC TABLES



Benches and tables are popular with Tongva park visitors. Benches are everywhere, they are inviting and comfortable to sit on. Picnic tables are located in two areas, one of them is near the playground.

FLOOR MATERIALS

PLAYGROUND RUBBER
SURFACE TRANSITION



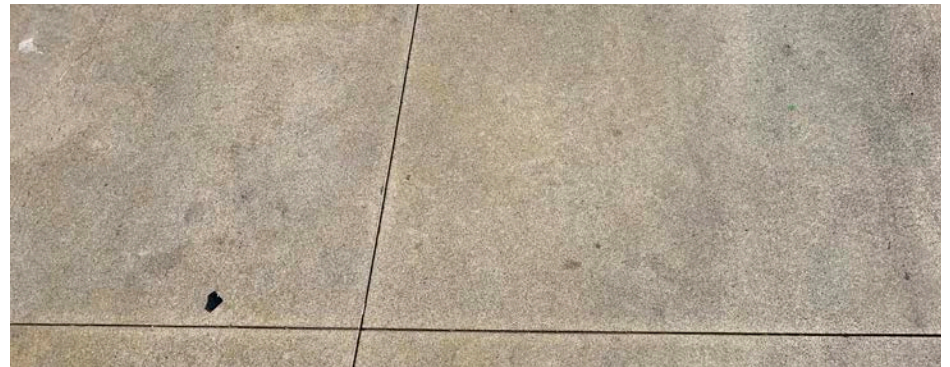
BRIDGE WOODEN PLANKS



There are different floor surface treatments that can be found in the park. Each surface is carefully selected based on hierarchy, location and use. There is a smooth concrete on ramps, concrete with embedded stones on pathways, decomposed granite in picnic areas, wooden floor planks on the bridge, rubber surface on the playground.



DECOMPOSED GRANIT AND CONCRETE WITH SMALL
AGGREGATE



SMOOTH CONCRETE WITH SCORE LINES

FOUNTAINS



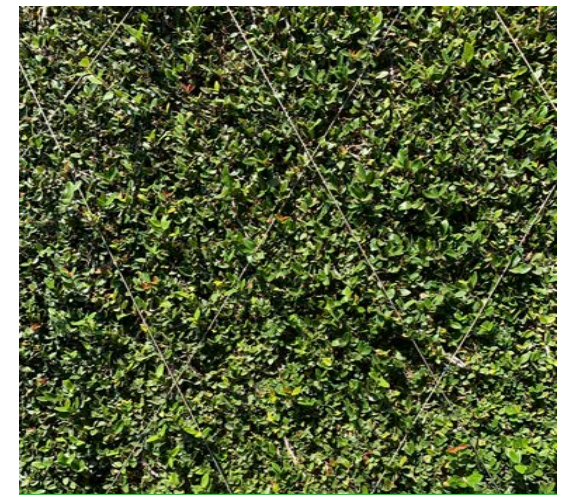
Park has two fountains - one at each entrance. Water runs from one fountain to the other inside a narrow runnel along the main path. It creates a special atmosphere in the park and is very popular with visitors. Unfortunately fountains do not work every day and they get turned on on special holidays only. I visited Tongva park twice last year and I haven't seen fountains working.

TREES AND PALMS



Washingtonia robusta, Phoenix canariensis, Pinus pinea, Arbutus marina, Quercus suber, Olea europaea, Ficus macrophylla, Platanus racemosa - these are some of the trees that can be found in the park. The biggest tree that was saved during construction is Moreton Bay Fig tree. Called "Morty," this Heritage tree is probably over 100 years old. Prior to 2013, Morty lived near a parking lot, which was removed and replaced with Tongva Park. Morty is about 40-50 ft high, with a canopy approximately 80 ft wide and very wide trunk, which is hard to measure.

PLANT MATERIAL



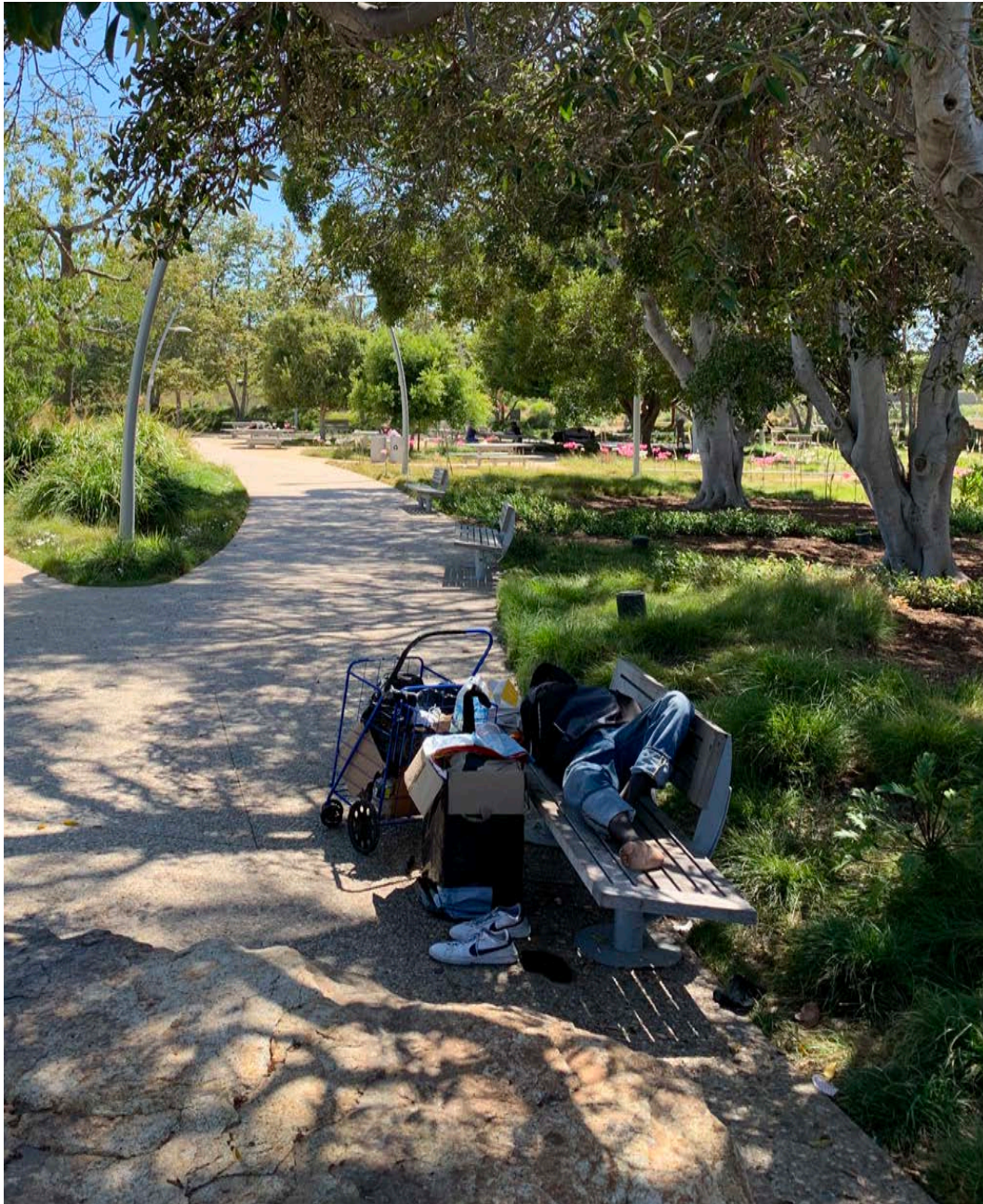
Grasses, bulbs, agave, succulents - mostly drought tolerant species are planted throughout the Tongva Park. Plant combinations are beautiful and inspiring. I love how grasses move in the wind under the weather station sculpture, how Naked Lady Lilies add a punch of color in September. Tall vertical concrete wall at the back of the restroom is covered by Creeping Fig Vine.

PEOPLE WHO WORK AT THE PARK



When I visited Tongva Park, I was lucky to see people who work there to keep it clean, safe and pleasant for visitors. Maintenance Crew took care of plants and trash. Park Ambassador answered some of the questions I had and actually helped other visitors at the park. I was pleasantly surprised to see a group of police officers riding through the park on horseback. Fun!

HOMELESS PEOPLE AT THE PARK



Should we talk about the elephant in the room? I think we should. There is a huge homeless population residing at the park. People sleep on benches, they take naps under Moreton Bay Fig Tree, they gather in big loud groups in small alleys in the park. When I visited the park, I could not go to some areas and take photos and videos, because there were too many loud homeless people seating in groups. Park Ambassador told me that homeless park inhabitants use fountains as their shower, so they had to turn them off during Covid pandemic. It is a big problem in many areas of California and we yet to find a sustainable solution for it. We need to help people with addiction problems, help them to find jobs and housing.

ACKNOWLEDGEMENTS



I would like to thank all the instructors who shared their knowledge in Landscape Architecture Graphics: David Squires, Rebecca Schwaner, and Laura Razo. This work would not be possible without your kind guidance.

I also would like to thank my husband Ilya and my kids Mila and Lev who support me in my studies of Landscape Architecture.

Anna Asnis. 1st year student @ UCLA Extension Landscape Architecture Certificate Program.