

TONGVA PARK

CHRISTINA ELDREDGE
DESIGN GRAPHICS 3
SPRING 2021



HELLO!

my name is Christina! I am dedicated to pursuing the dream of becoming a landscape architect. I have a strong passion for California's unique landscapes, edible gardens, and sustainable design. I think that landscape architecture has the potential to change the world, and I hope to be a part of that change



Content

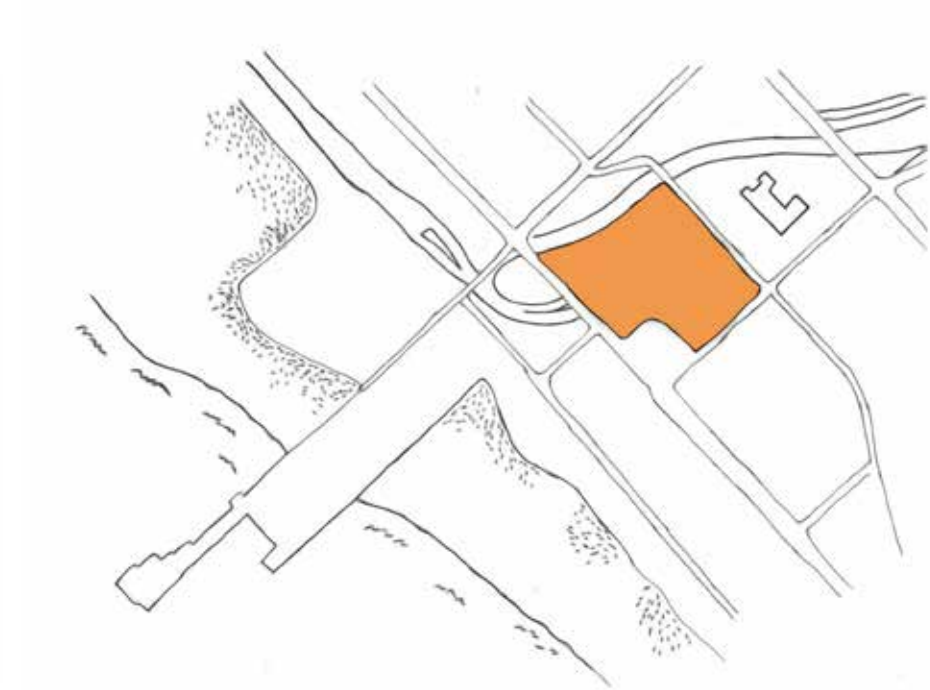
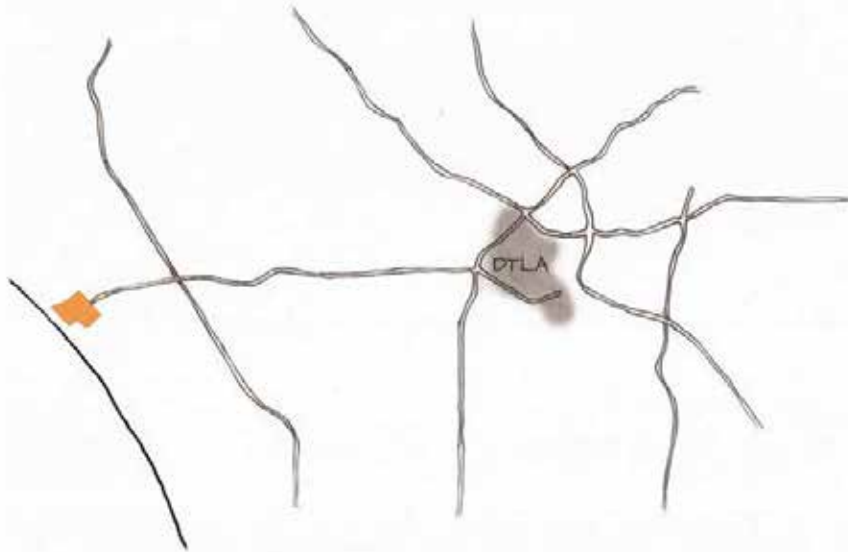
Introduction.....	1-2
Location/Context.....	3-4
Analysis.....	5-10
Plan.....	11-12
Sketches.....	13-14
Plants.....	15-18
Summary.....	19-20



“...six acre urban oasis”

Take one step inside Tongva Park in Santa Monica, California, and you'll find it hard to believe that this 6-acre urban oasis was a flat asphalt parking lot just a few short years ago. Together with Ken Genser Square, these two public spaces were part of a community-sourced vision for a vibrant new neighborhood that would bring life to Santa Monica's Civic Center. Designed by a project team led by James Corner Field Operations, these new open spaces have made the community's vision a reality.

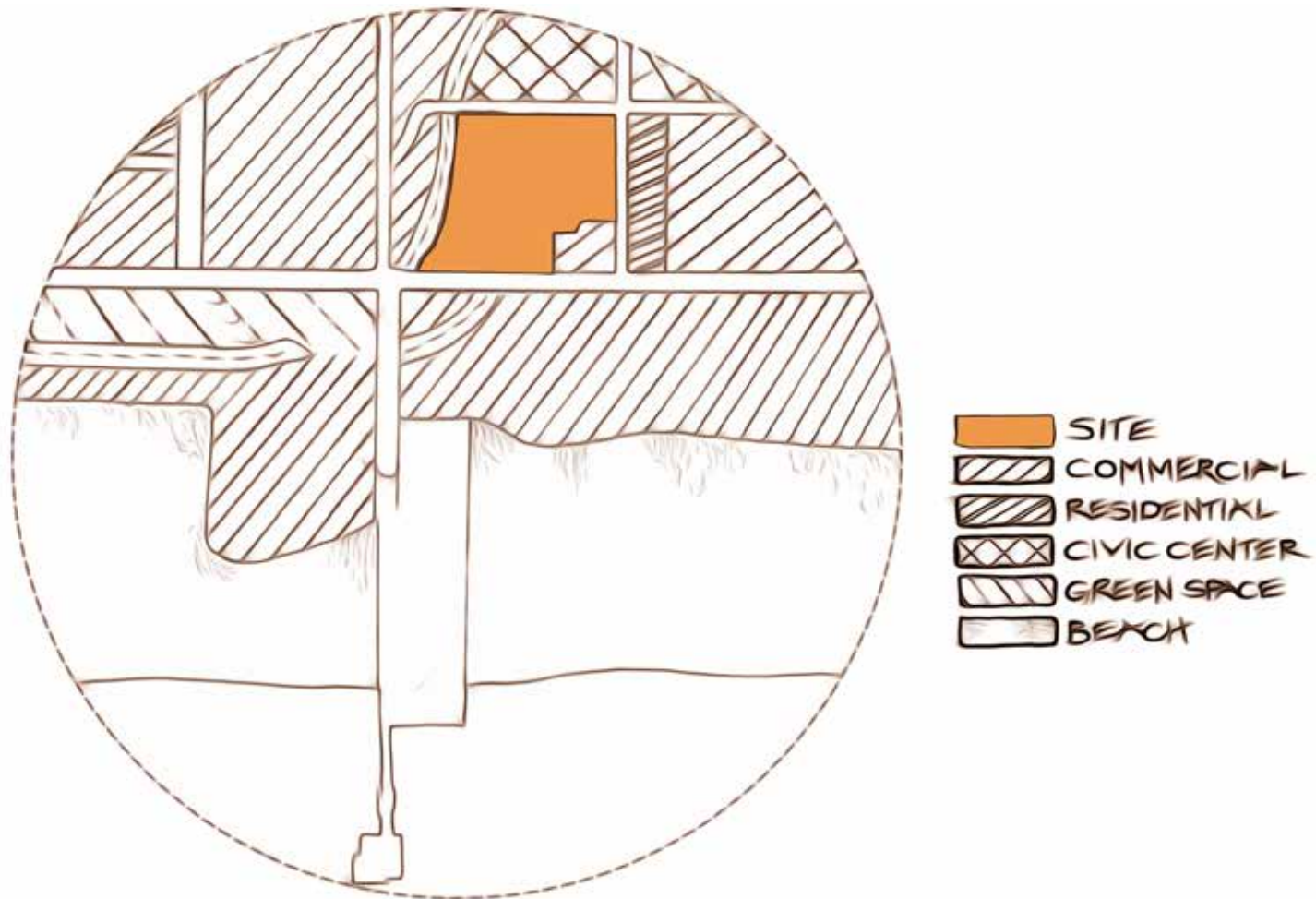
location



Tongva Park is an ocean front park located in the Los Angeles Basin

context

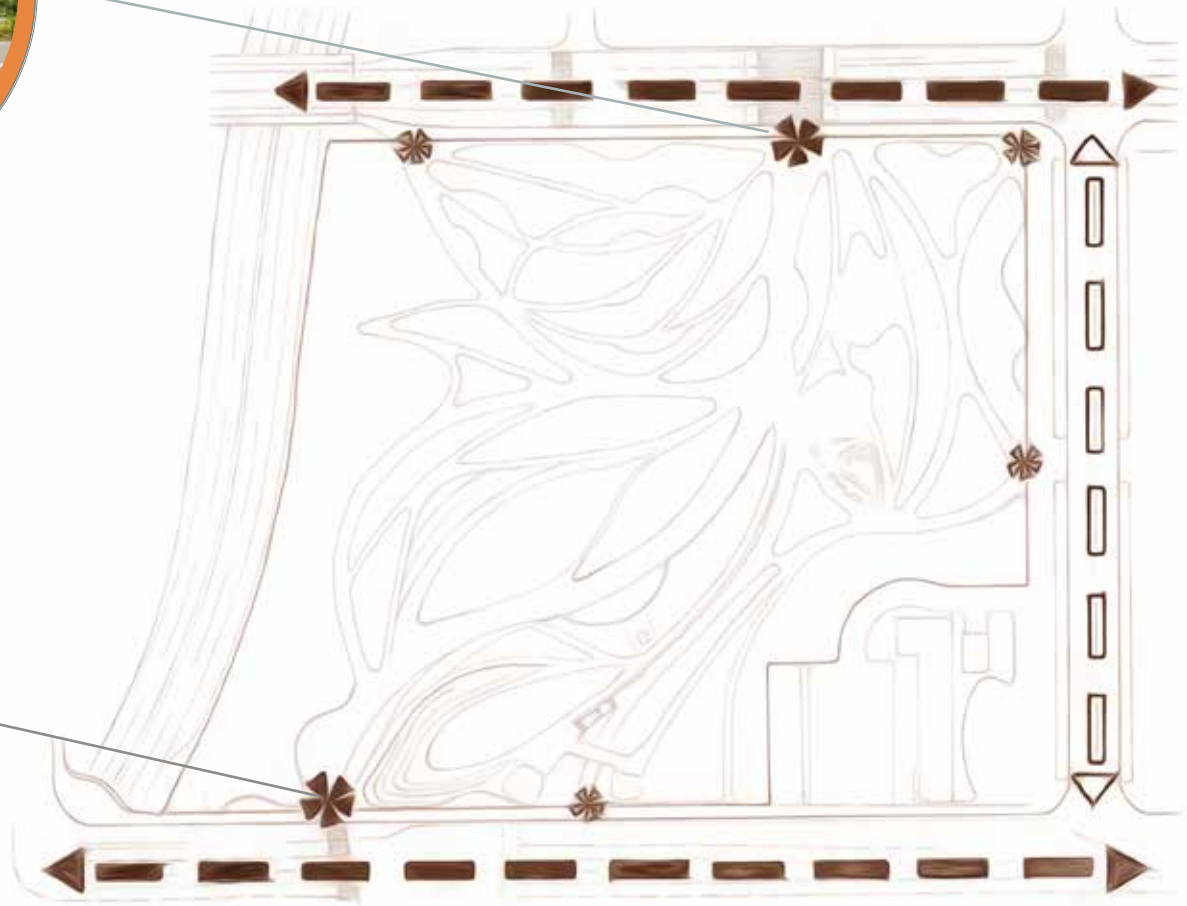
In the heart of Santa Monica, in front of city hall, and running along the 10 freeway



analysis



vehicular circulation & access points



pedestrian circulation



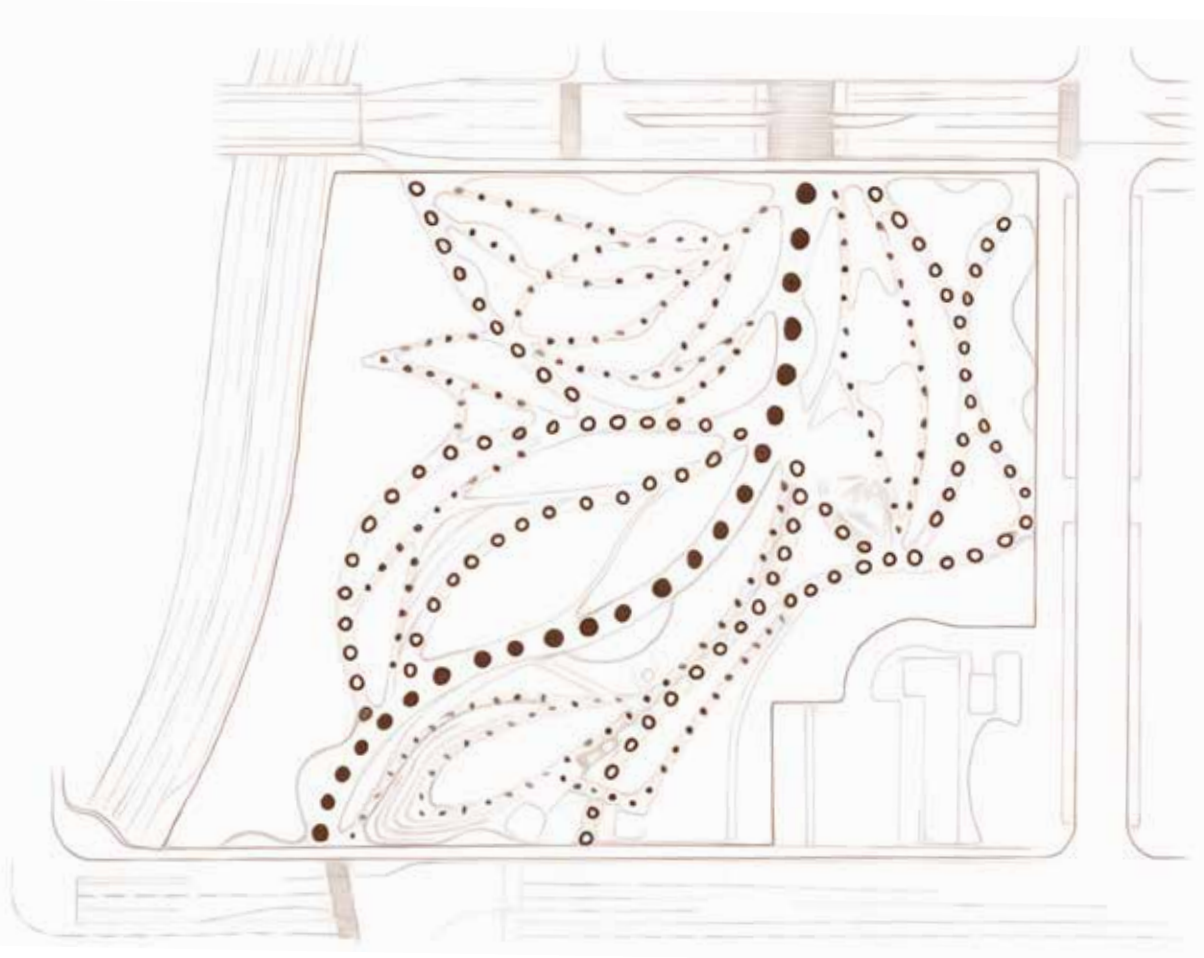
Primary



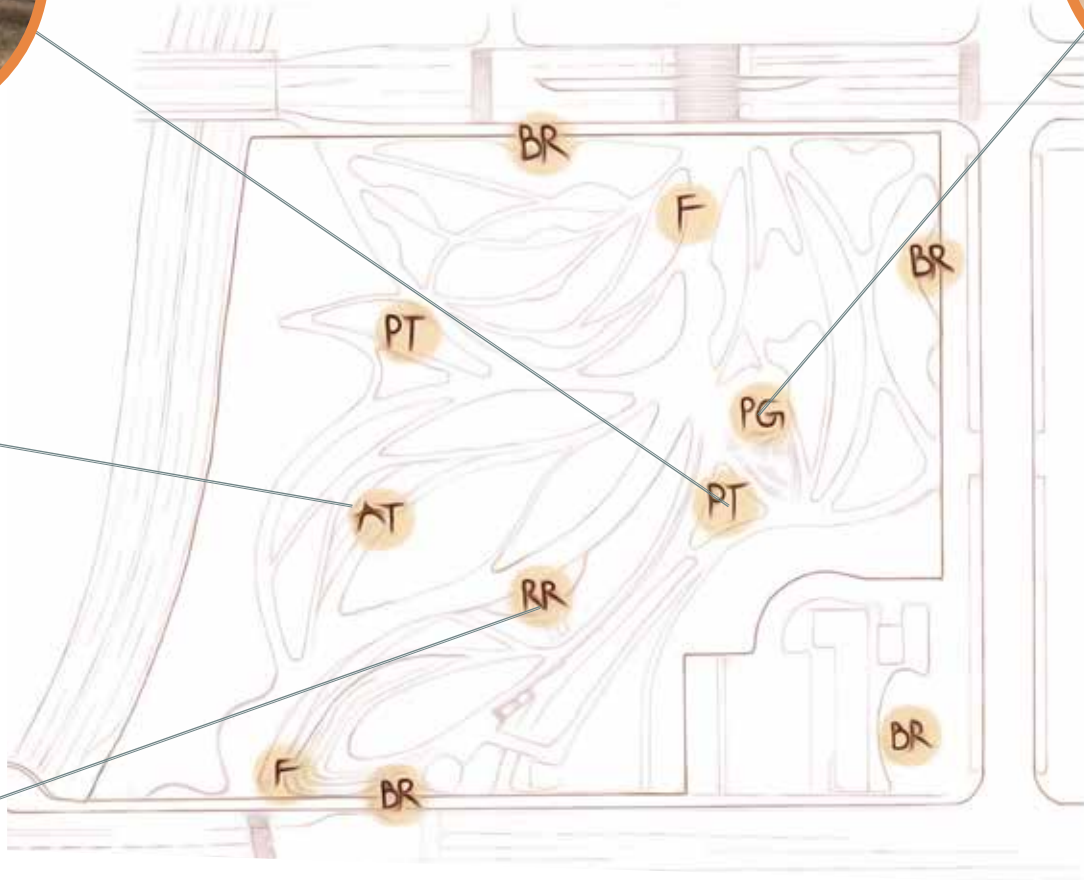
Secondary



Tertiary



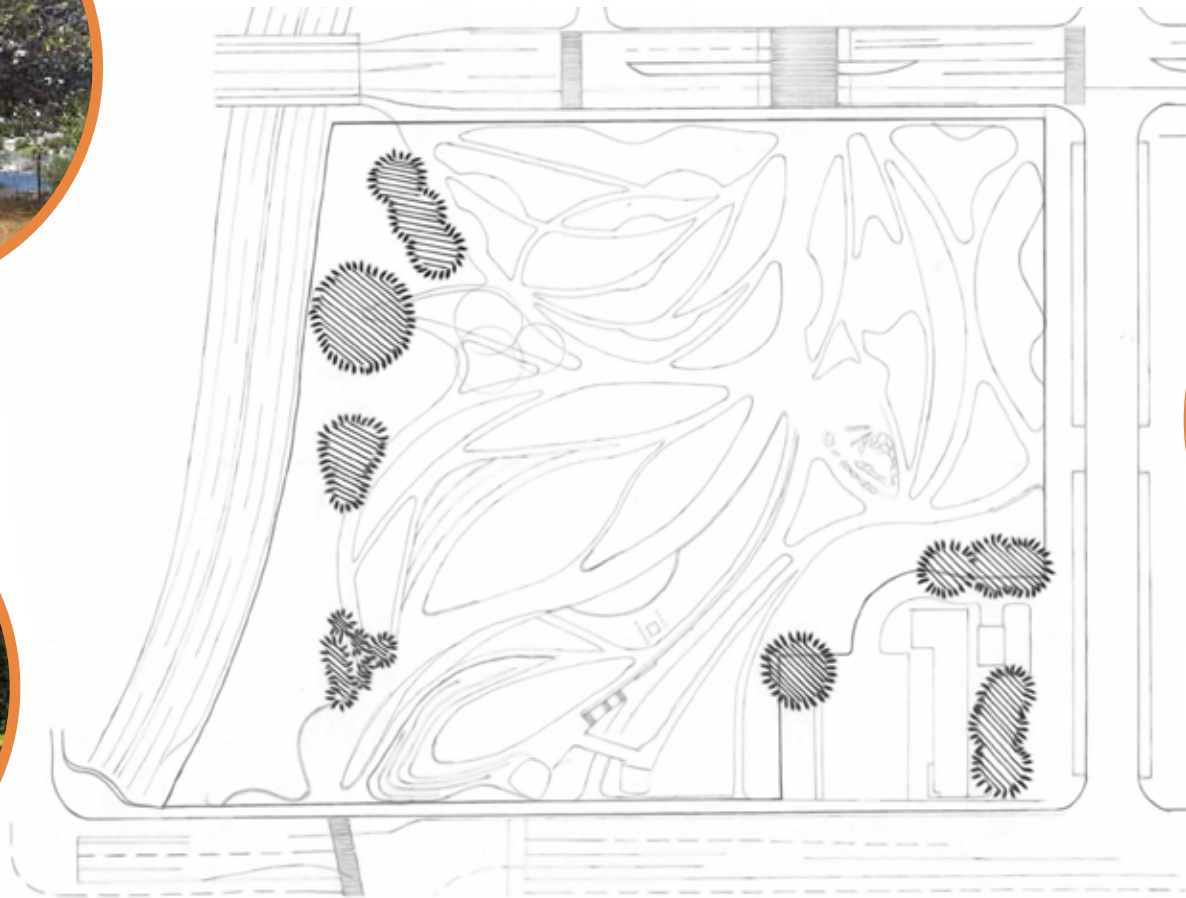
amenities



- F FOUNTAIN
- BR BIKE RACKS
- PG PLAYGROUND
- PT PICNIC TABLES
- RR RESTROOMS
- AT AMPITHEATER



existing tree canopy





“the heart of Santa Monica”





sketches





PLANTS





Carex pansa
California Dune Sedge



Hesperaloe parviflora
Red Yucca



Festuca mairei 'Greenlee's Form'
Atlas Fescue



PLANTS



Aeonium arboreum
Tree Aeonium



Daisyliasion longissimum
Mexican Grass Tree



Senecio talinoides
Blue Chalksticks





Carex pansa
California Dune Sedge

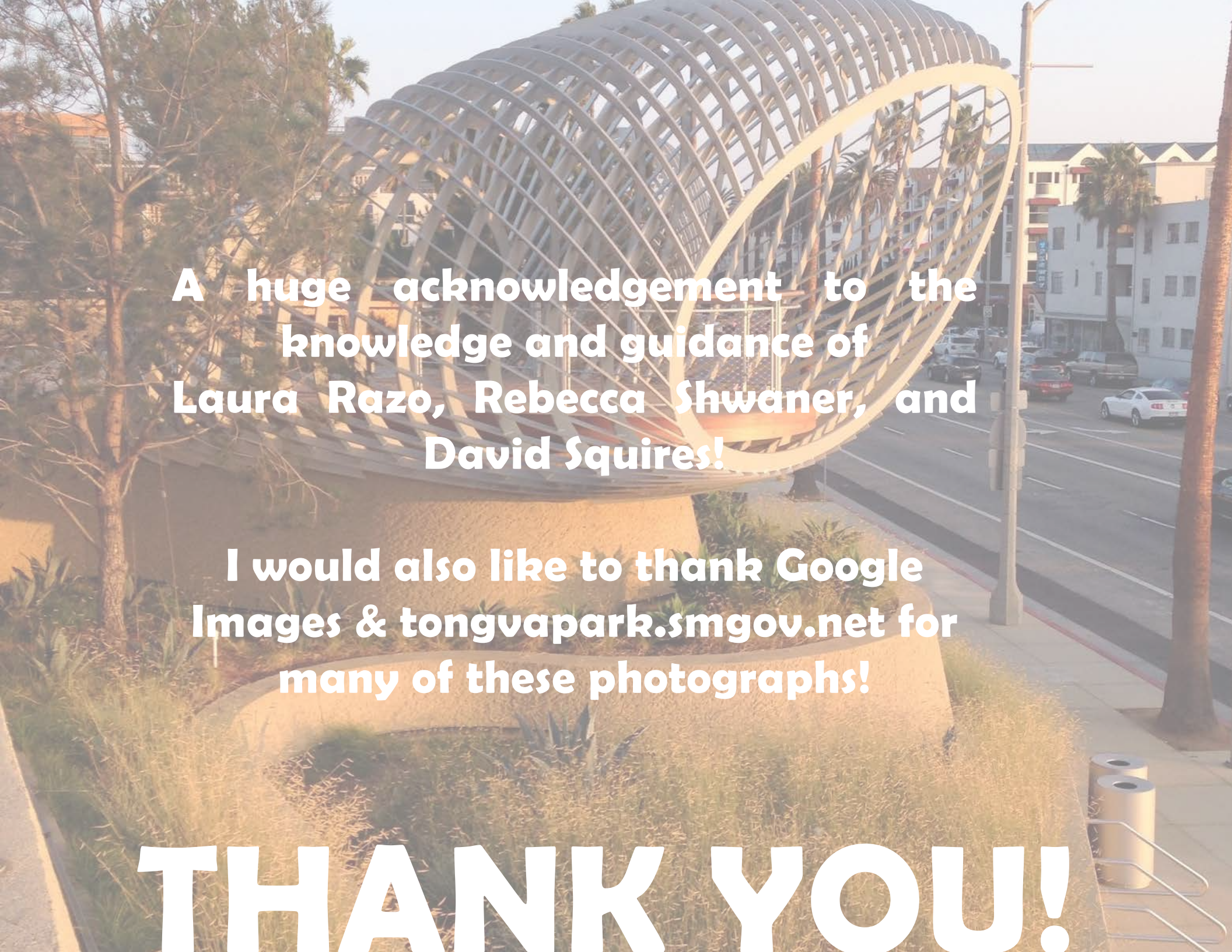


Aster chilensis 'Purple Haze'
California Aster



Pinus halepensis
Allepo Pine





**A huge acknowledgement to the
knowledge and guidance of
Laura Razo, Rebecca Shwaner,
and David Squires!**

**I would also like to thank Google
Images & tongvapark.smgov.net for
many of these photographs!**

THANK YOU!