



TONGVA PARK

Jina Park
Design Graphics 3
w/ Laura Razo
Spring 2021



TABLE OF CONTENTS

- INTRODUCTION & BIO.....3
- HISTORY.....4
- SITE MAP.....6
- SITE ANALYSIS.....9
- SITE PLAN.....10
- PLANT PALETTE.....14
- FEATURES.....17
- SUMMARY &
ACKNOWLEDGEMENTS.....23



Jina is currently a student of Landscape Architecture at UCLA Extension, projected to obtain her license in 2023. In her previous years, she was the founder and CEO of PLUSH, LLC, a juvenile products and lifestyle trade show company that grew into an international brand within the first three years. Her joy for creating beautiful and functional event spaces, combined with her love for nature and landscape, drew her to pursue this exciting new career.

Currently, Jina devotes her free time actively fundraising and assisting non-profit organizations, serving on the board at KFAM, and supporting Generosity.org, where she and her husband assisted in building water wells in underdeveloped countries, such as Ghana, Ethiopia, and Haiti.

Jina graduated cum laude with a Bachelor's Degree in Sociology from UCLA, with emphasis in Communication Studies. She also holds a degree in Fashion Design from FIDM. Jina and her husband have three children and live in Hancock Park.

ABOUT TONGVA PARK



Tongva Park is divided into 4 main sections: Observation Hill, Discovery Hill, Garden Hill, and Gathering Hill. It features a native and locally appropriate sustainable plant palette that changes subtly with the seasons. The dramatic topography of rolling hills and braided paths inspired by the arroyo wash landscape makes the park feel much larger than 6 acres, accommodating a range of uses that benefit the health and wellbeing of community members and visitors of all ages.



The park name celebrates of the rich culture and traditions of the indigenous Tongva people who have lived in this region for thousands of years, and were deeply connected to the original arroyos, native landscape, springs, and the 'breath of the ocean' that are symbolically represented in this park.*

Tongva Park is located at:

1615 Ocean Avenue, Santa Monica, CA 90401

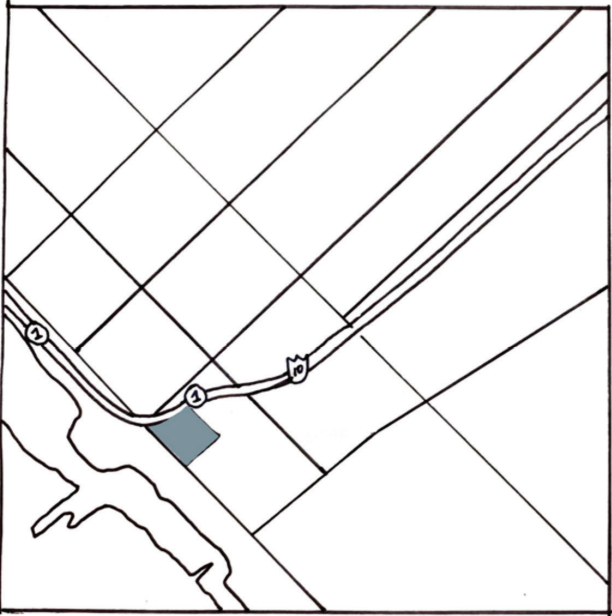
HISTORY OF SANTA MONICA



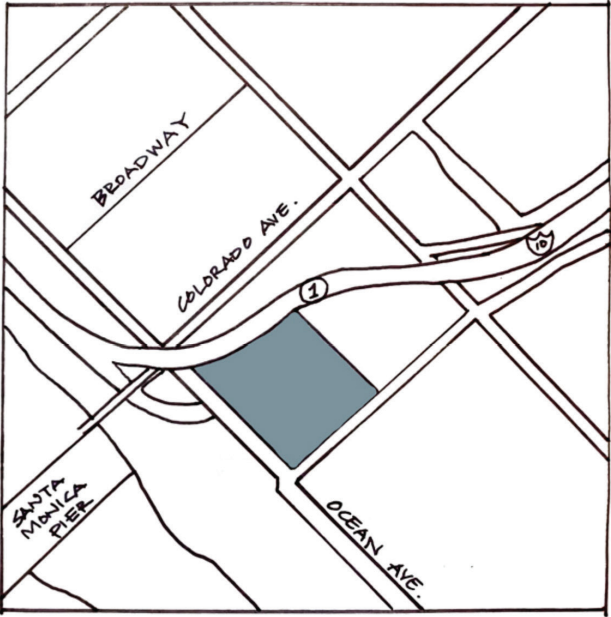
Santa Monica is a city located in Southern California, and is surrounded by the city of Los Angeles. Santa Monica was laid out in 1875 by Senator John P. Jones and named for Las Lágrimas de Santa Monica (Spanish: “The Tears of St. Monica”), a local spring. The city was promoted as an ocean-side resort and port-terminus of the Los Angeles-to-Independence Railroad. An aircraft company established in Santa Monica in 1920 by Donald Douglas was the forerunner of the city’s modern aerospace and communications industries.

Although Santa Monica was eclipsed as a port by San Pedro, the city prospered as a residential and vacation centre; it is particularly noted for its pier (1909), which includes restaurants, shops, an aquarium, and a classic carousel. Also popular are the city’s fine beaches, art galleries, and theatres. The state’s history is preserved at the California Heritage Museum, and the Museum of Flying displays vintage aircraft. Santa Monica (community) College was established in 1929. Malibu Creek State Park is popular for hiking and fishing and has been used as a backdrop for many films and television shows. Will Rogers State Beach and Will Rogers State Historic Park are both nearby. (Source: santamonicahistory.org, Inc. 1886)

SITE MAP

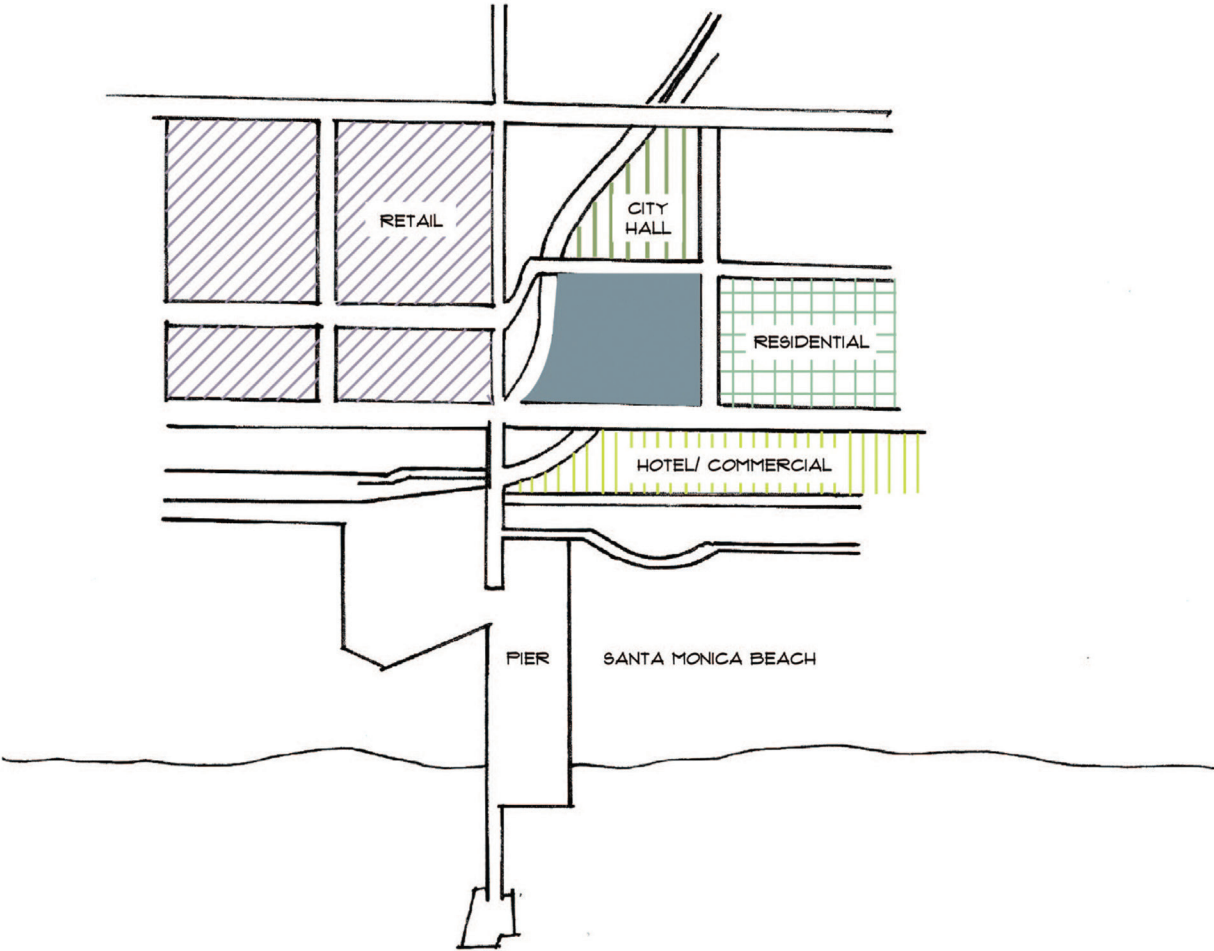


NTS



50 ft

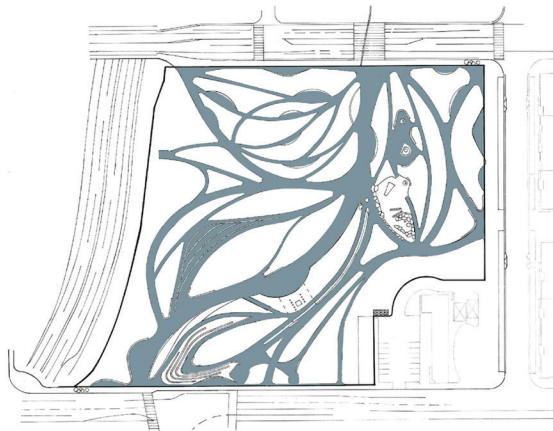
CONTEXT DIAGRAM



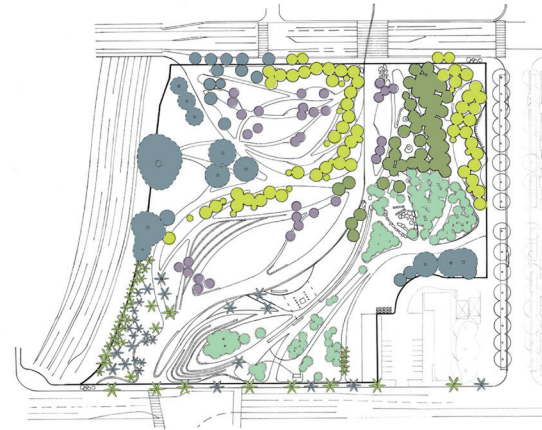
CONCEPT DIAGRAM



SITE ANALYSIS

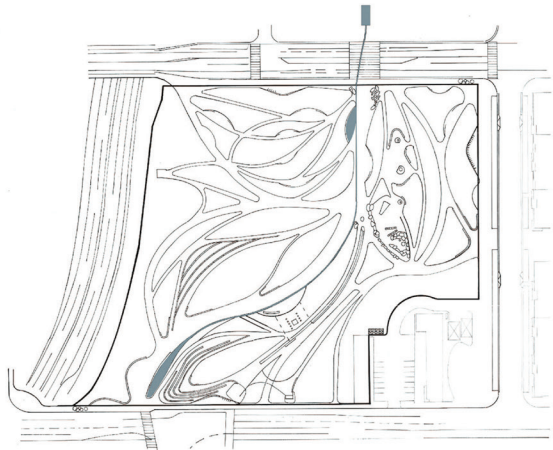


PATHWAYS

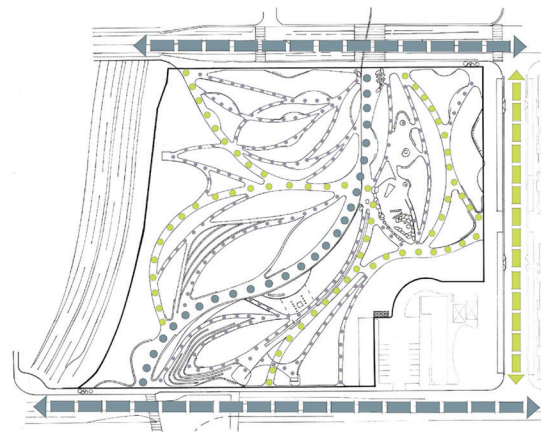


TREE CANOPY

- FIG MIX
- OAK & OLIVE MIX
- SYCAMORE MIX
- SPECIMEN MIX
- PINE MIX
- * PALM MIX
- * EXISTING PALMS



WATER FEATURES



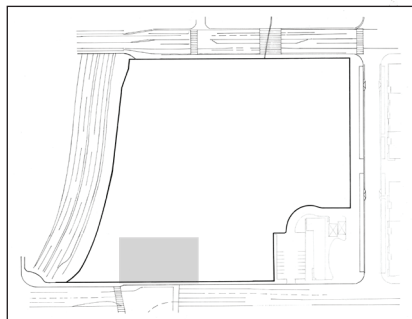
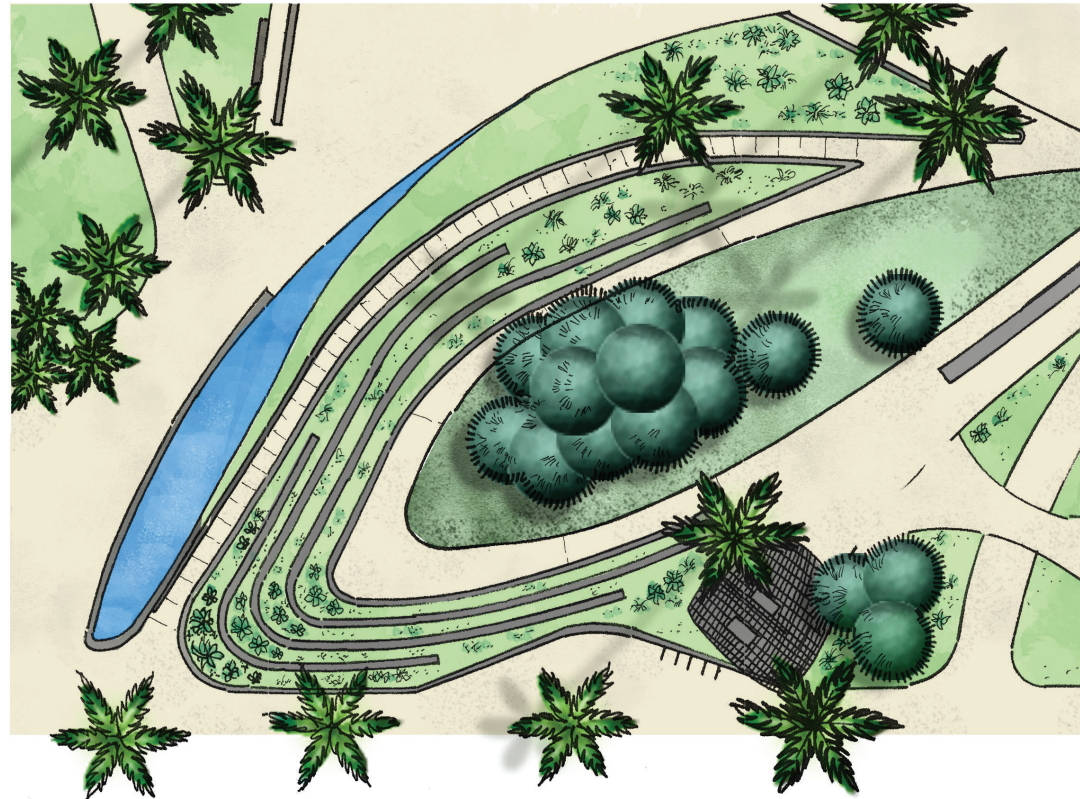
CIRCULATION

- PEDESTRIAN
- ● ● PRIMARY
- ● ● SECONDARY
- ● ● TERTIARY
- VEHICULAR
- ← → PRIMARY
- ← → SECONDARY

ILLUSTRATIVE SITE PLAN



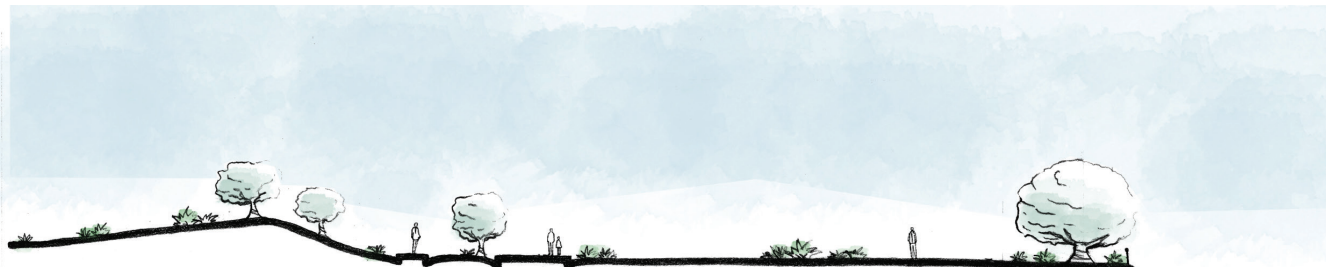
ENLARGEMENT



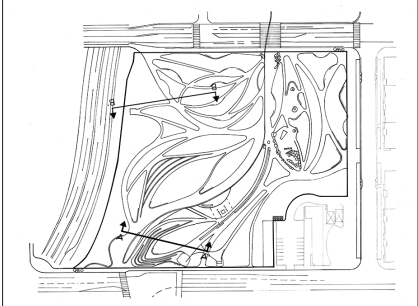
SCALE 1" = 10'



SECTION ELEVATIONS



1"=20'-0" 0 20 40

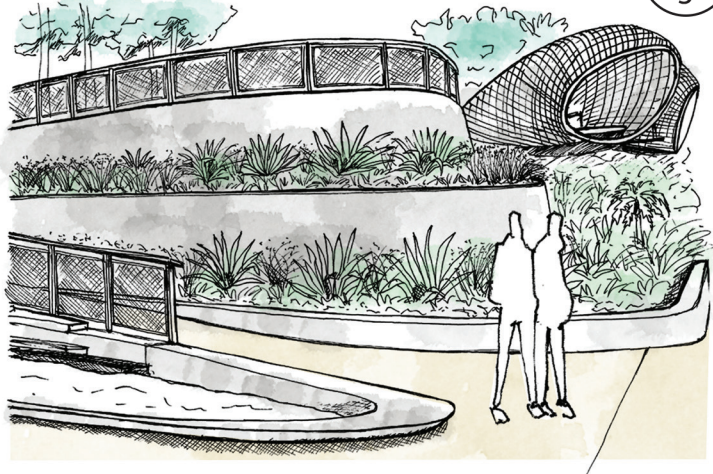


PERSPECTIVE ILLUSTRATIONS

P
1



P
3



P
2



P
4



PLANT PALETTE - SUCCULENTS



Blue Chalk Sticks
Senecio talinoides ssp. mandraliscae



Tree Aeonium Black Rose
Aeonium arboretum 'Zwartkop'



Tree Aeonium
Aeonium arboretum



Tilt Head Aloe
Aloe speciosa



Mountain Aloe
Aloe marlothii



Soap Aloe
Aloe maculata

PLANT PALETTE - SUCCULENTS



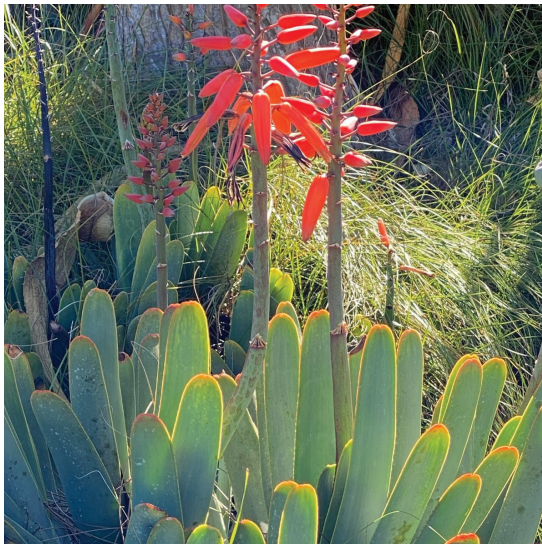
Blue Foxtail Agave
Agave attenuata 'Boutin Blue'



Agave 'Sharkskin Shoes'
Northern Sharkskin Agave



Century Plant
Agave americana



Fan Aloe
Aloe plicatilis



Bitter Aloe
Aloe Ferox



Desert Spoon
Dasylirion wheeleri

PLANT PALETTE - TREES



Tree Aloe
Aloe barbaerae (A. banseii)



Marina Strawberry Tree
Arbutus marina



Moreton Bay Fig Tree
Ficus macrophylla



Stone Pine*
Pinus pinea



Olive Tree*
Olea europaea 'Swan Hill'



Giant Dioon*
Dioon spinulosum

KEY FEATURES



Overlook



Water Feature



Change in Terrain (Elevation)



Art Installation

AMENITIES



Bike Racks



Railings



Water Fountain



Trash and Recycling Receptacles

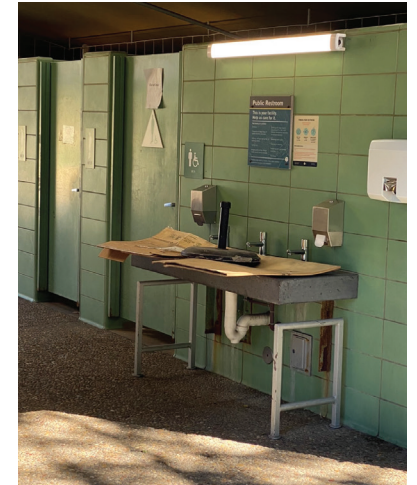


Boulders



Signage

RESTROOM & PLAYGROUND FACILITIES



LIGHTING



Pedestrian Lighting A



Pedestrian Lighting B



Lit Bollard

SEATING



Wooden Bench Surface Mounted w/ Back



Wooden Bench Mounted on Seat Wall



Backless Wooden Bench



Wooden Picnic Tables & Benches

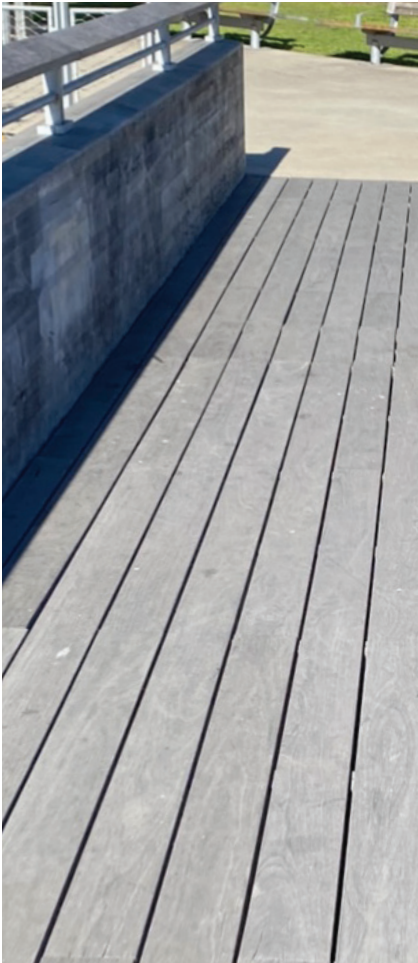
SURFACING MATERIALS



Decorative Pavers



Resilient Surfacing



Wood Bridge



Concrete

SUMMARY & ACKNOWLEDGEMENTS

Special thanks to David, Rebecca and Laura for your guidance; to my classmates for their constant enthusiasm & positivity.

My deepest gratitude to my husband and three children for their patience and daily encouragements!

Photos and content marked with an asterisk* courtesy of tongvapark.smgov.net