

TONGVA PARK

TERESITA LARRAIN

D G 3 - S P R I N G 2 0 2 1



**"CREATING A NEW HEART FOR SANTA MONICA
—
A NEW DESTINATION AND GATHERING PLACE
OF GREAT SOCIAL, ECOLOGICAL,
AND SYMBOLIC VALUE."**

- James Corner
James Corner Field Operations,
Tongva Park Landscape Architects

TABLE OF CONTENTS

- THE SITE
 - LOCATION 1

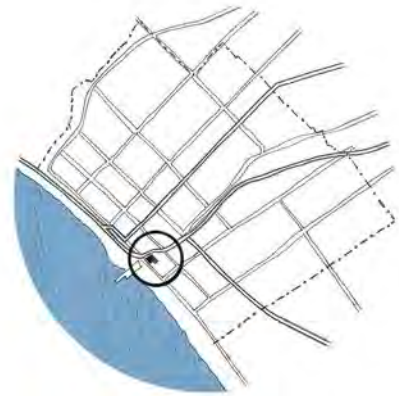
- CONCEPT AND ANALYSIS DIAGRAMS
 - CONCEPT 3
 - EDGES 5
 - PARK CIRCULATION 6
 - NATURAL COMPONENTS 7

- DRAWINGS AND PERSPECTIVES
 - ILLUSTRATIVE PLAN 9
 - TREE MAP 10
 - PLANTING ZONES 11
 - CONTOURS PLAN 12
 - N-W CORNER ENLARGEMENT 13
 - OCEAN AVE EDGE ENLARGEMENT 14
 - ENLARGEMENT PERSPECTIVES 15

- IMAGE GALLERY 18

- SUMMARY 19

CONTEXT AND LOCATION



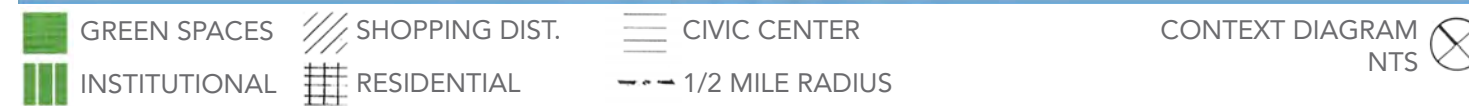
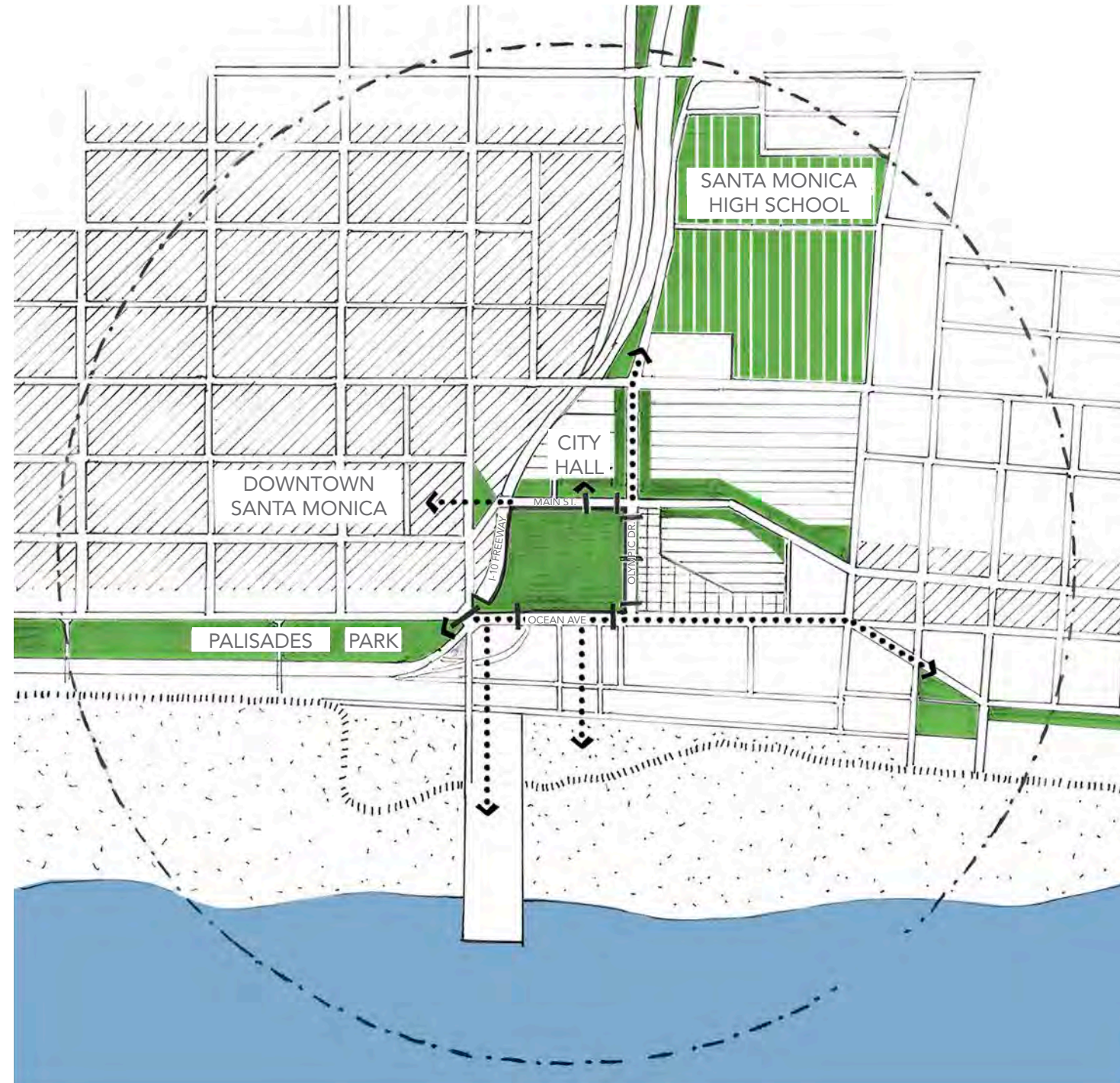
Location Maps
NTS



Downtown Santa Monica



Santa Monica Pier



Tongva Park is situated at the **heart of Santa Monica City**, between City Hall, the I-10 Freeway, and Ocean Avenue.

It has **beach views** to the west, and it's located near major **shopping areas** of the city, 3rd Street Promenade and Santa Monica Place to the north, and an important commercial area of Main Street to the south-west.

Santa Monica High School and the Civic Center are located to the east of the site.

The park's central location improves the urban fabric by:

- Reinforcing the city's **parks and green spaces network**, joining Santa Monica's Palisade's Park with the parks to the west of the site,
- creating a **strong connection to Downtown** and the adjacent neighborhoods,
- and **linking City Hall** to Santa Monica Pier and State Beach.



Santa Monica High School



Santa Monica City Hall



Palisades Park

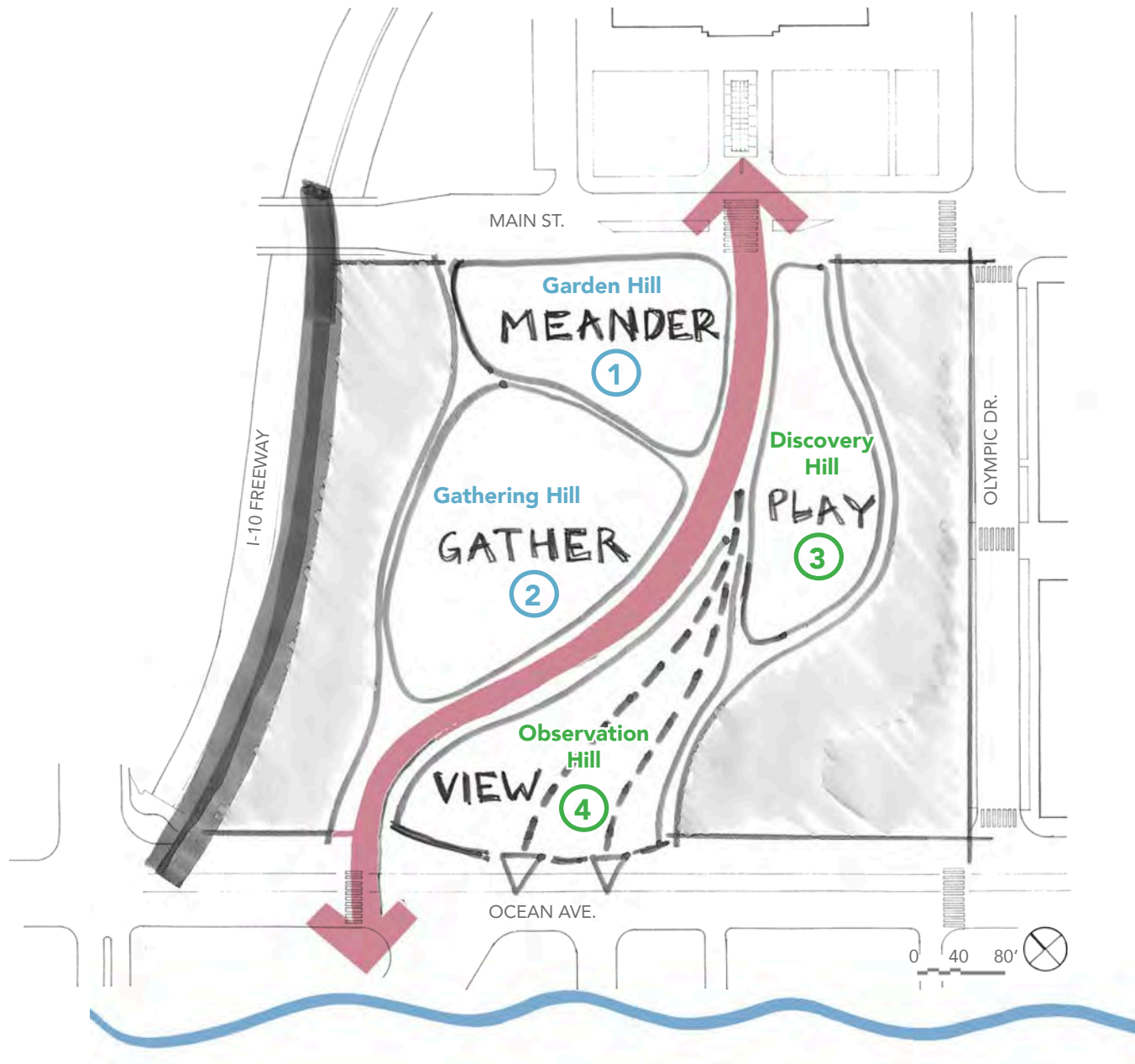


Palisades Park



CONCEPT AND ANALYSIS DIAGRAMS

CONCEPT



DESIGN CONCEPT

As a main design strategy, Tongva Park's 6-acre site is bisected by a north-east / south-west **axis** that begins at the front of City Hall and ends at Ocean Ave, with a virtual extension all the way to Santa Monica Pier.

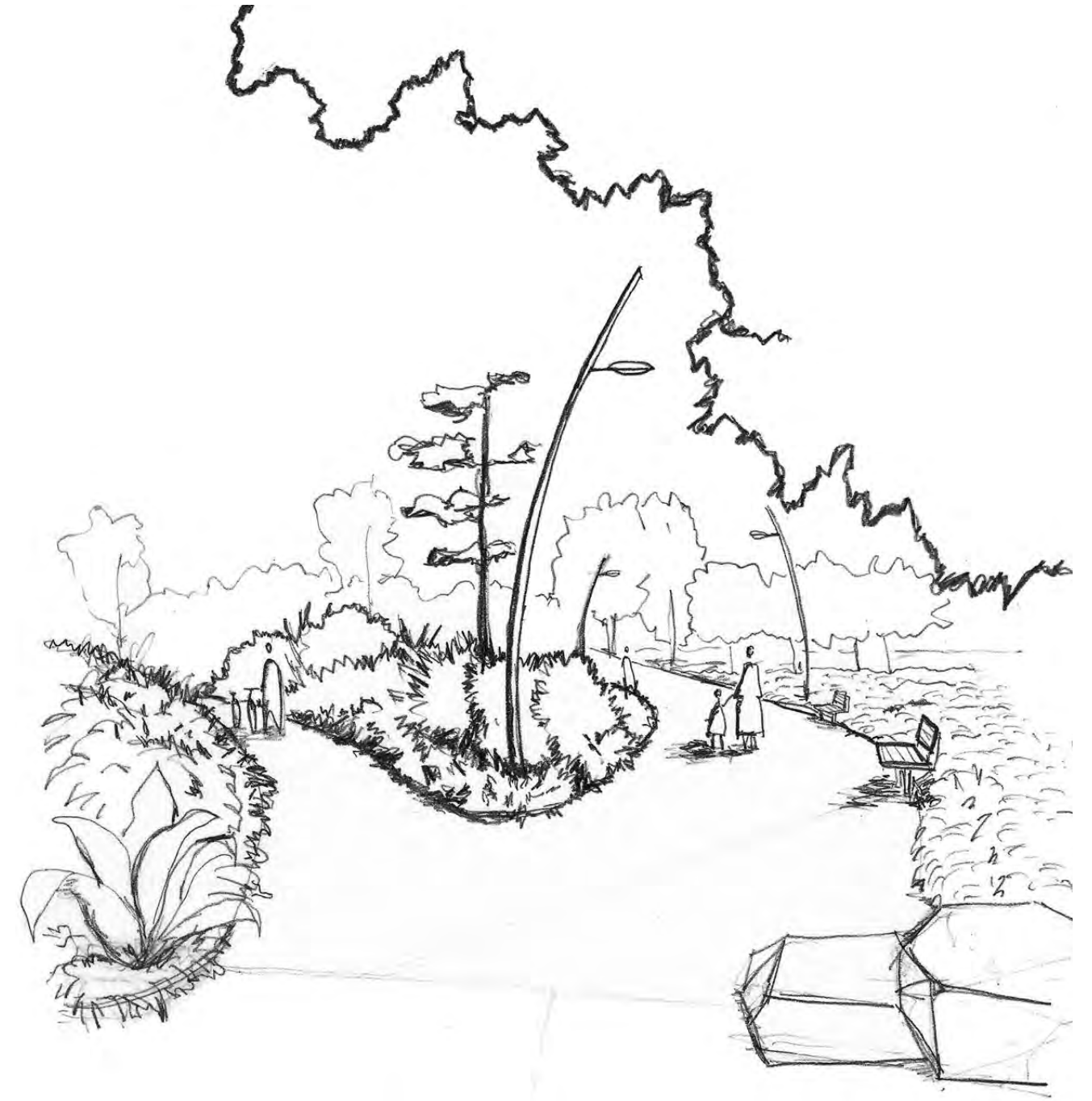
Besides connecting two emblematic points, the axis organizes the four main thematic areas of the park. These areas are called "hills", as their design was inspired by the rolling hills found in the natural landscape of California.

THE HILLS

Each hill area has unique characteristics and functions defined by changes in topography and variations in the pathway system.

- **Garden Hill**, located in the northeast quadrant of the park, is defined by braided walking paths and seating areas between garden mounds with seasonal blooms that encourage a slow walk in an intimate environment.

- **Gathering Hill**, in the northwest quadrant of the park, features a grass amphitheater in an open area, and a multi-purpose lawn, providing a space for congregation and gatherings. This is also the home of "Weather Field No. 1," a kinetic steel sculpture that moves with the wind.



GARDEN HILL ILLUSTRATION

- **Discovery Hill**, located in the southeast quadrant, features spaces and elements for children to play, including a splash area and slides.

- **Observation Hill**, in the southwest quadrant, reaches the highest point in the park, and features two lookouts with views of the ocean and surrounding neighborhood.

BUFFERS

Buffer areas along the I-10 Freeway and Olympic Dr. reinforce the City Hall - Ocean Ave. axis, and mitigate the effects of the freeway's noise and pollution.

NAMING

Tongva Park was named after the indigenous people who have lived in the Los Angeles area for thousands of years.

LANDMARK

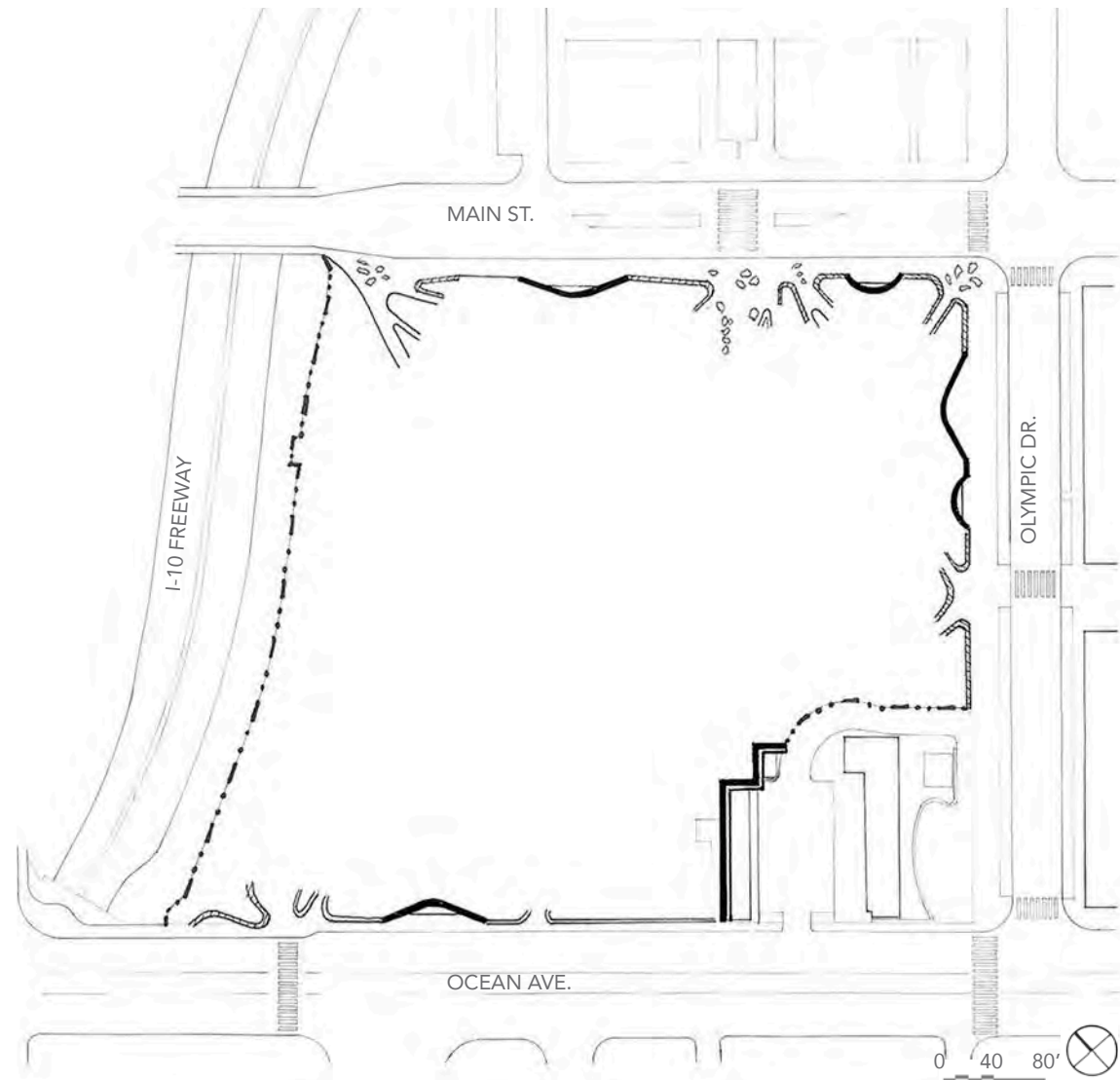
Designed to become a landmark that reflects the identity of the City and a **cultural destination** that would complement the Civic Center area, Tongva Park's design process involved substantial **community participation**, resulting in a project that creates a dynamic and sustainable landscape with a variety of active social spaces and gardens that bring life to the neighborhood.



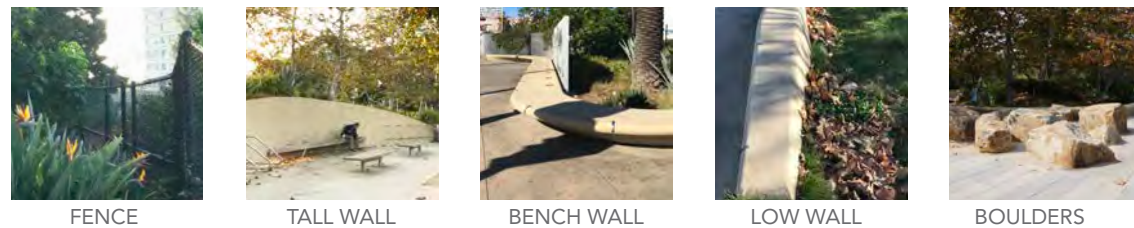
"Inspired by the Southern California **arroyo** landscape of washes and **ravines** that once defined the site, a series of **braided pathways** appear to organically **emerge** from the footsteps of City Hall, extend west to Ocean Avenue, and **weave** the park into the fabric of the City."

ANALYSIS DIAGRAMS: EDGES

BUILT EDGE CONDITIONS



- BUILDING
- TALL RETAINING WALL
- LOW WALL
- ⊗ BOULDERS
- - - FENCE
- BENCH RETAINING WALL
- PAVING EDGE



FENCE TALL WALL BENCH WALL LOW WALL BOULDERS

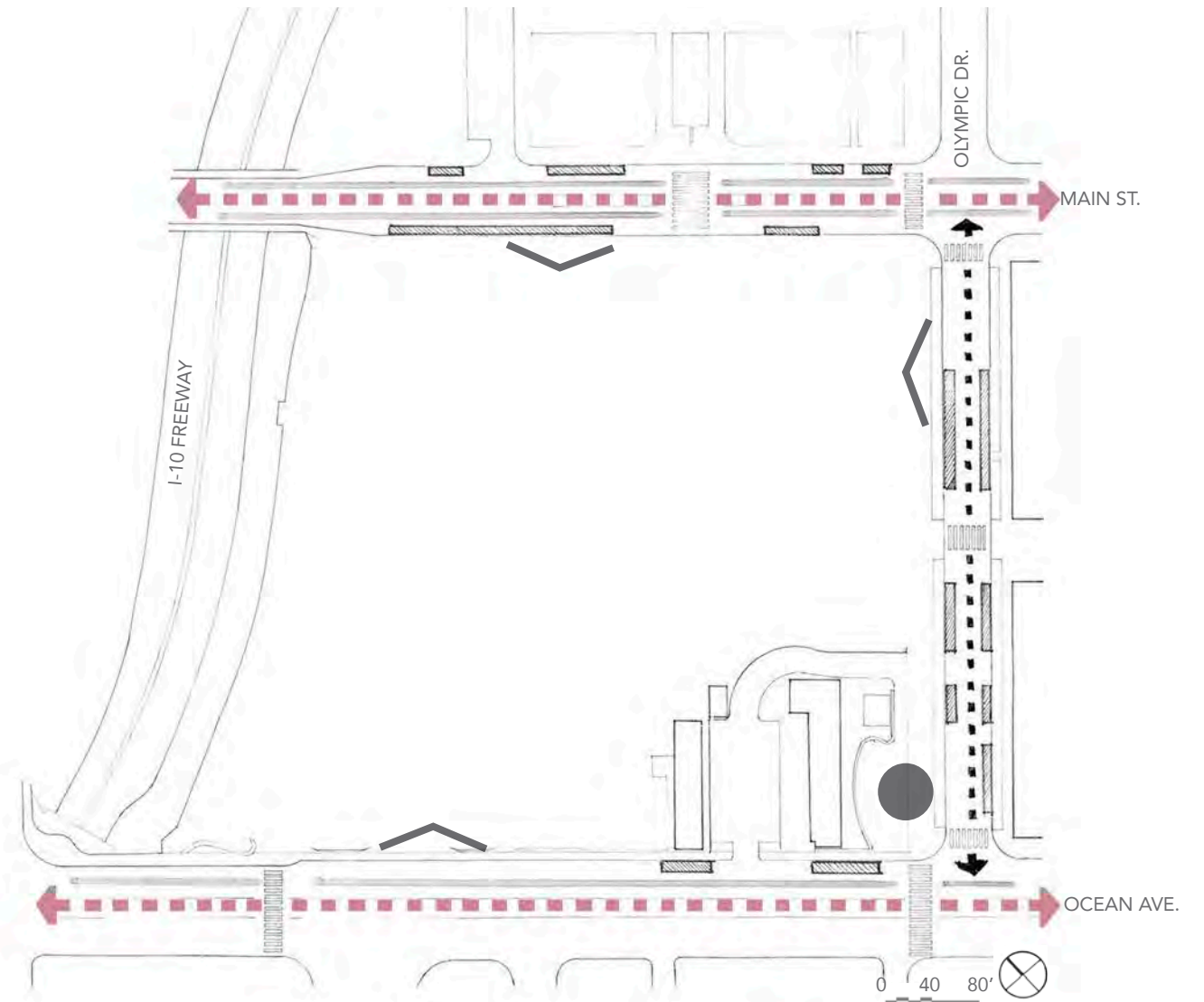
The street edges of Tongva Park have been carefully designed to integrate the park with the city and at the same time give a sense of enclosure to the landscaped areas.

Lower walls extend from the park to the sidewalk as a **continuous bench**, merging the park with the street.

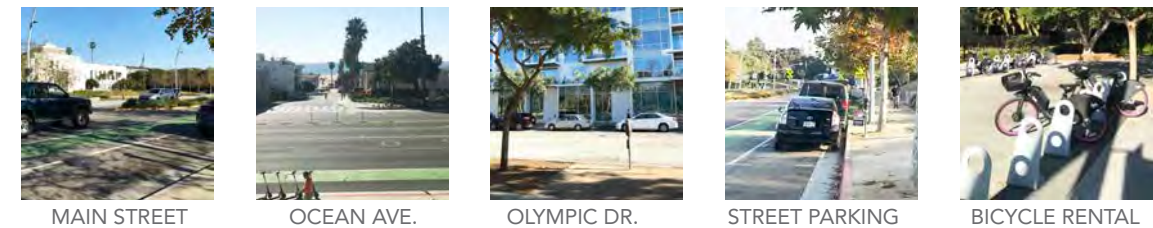
Tall, concave retaining walls double as backrests for benches and bicycle racks facing the street.

Boulders mark access points and act as a permeable barrier.

STREET CIRCULATION



- ← - - - - - → VEHICULAR - PRI.
- ← - - - - - → VEHICULAR - SEC.
- ▨ STREET PARKING
- BICYCLE LANE
- ⌒ BICYCLE PARKING
- BICYCLE RENTAL



MAIN STREET OCEAN AVE. OLYMPIC DR. STREET PARKING BICYCLE RENTAL

The park is surrounded by streets on its four sides. Main St. and Ocean Ave. are **primary circulation** roads that include bicycle lanes and street parking. Olympic Dr. is a smaller two-lane residential street with parking on both sides.

Recognizing the importance of **bicycle transportation** in Santa Monica, the park's designers added three bike racks, one on each street edge.

The I-10 freeway is on a lower level and doesn't connect to the park, but it has a **visual impact** on the site that is reduced by a planted buffer.

ANALYSIS DIAGRAMS: PARK CIRCULATION

PAVING MATERIALS



- LARGE AGGREGATE
- CONCRETE
- RUBBER PAVING
- SMALL AGGREGATE
- D.G.



LARGE AGGREGATE SMALL AGGREGATE CONCRETE D.G. RUBBER PAVING

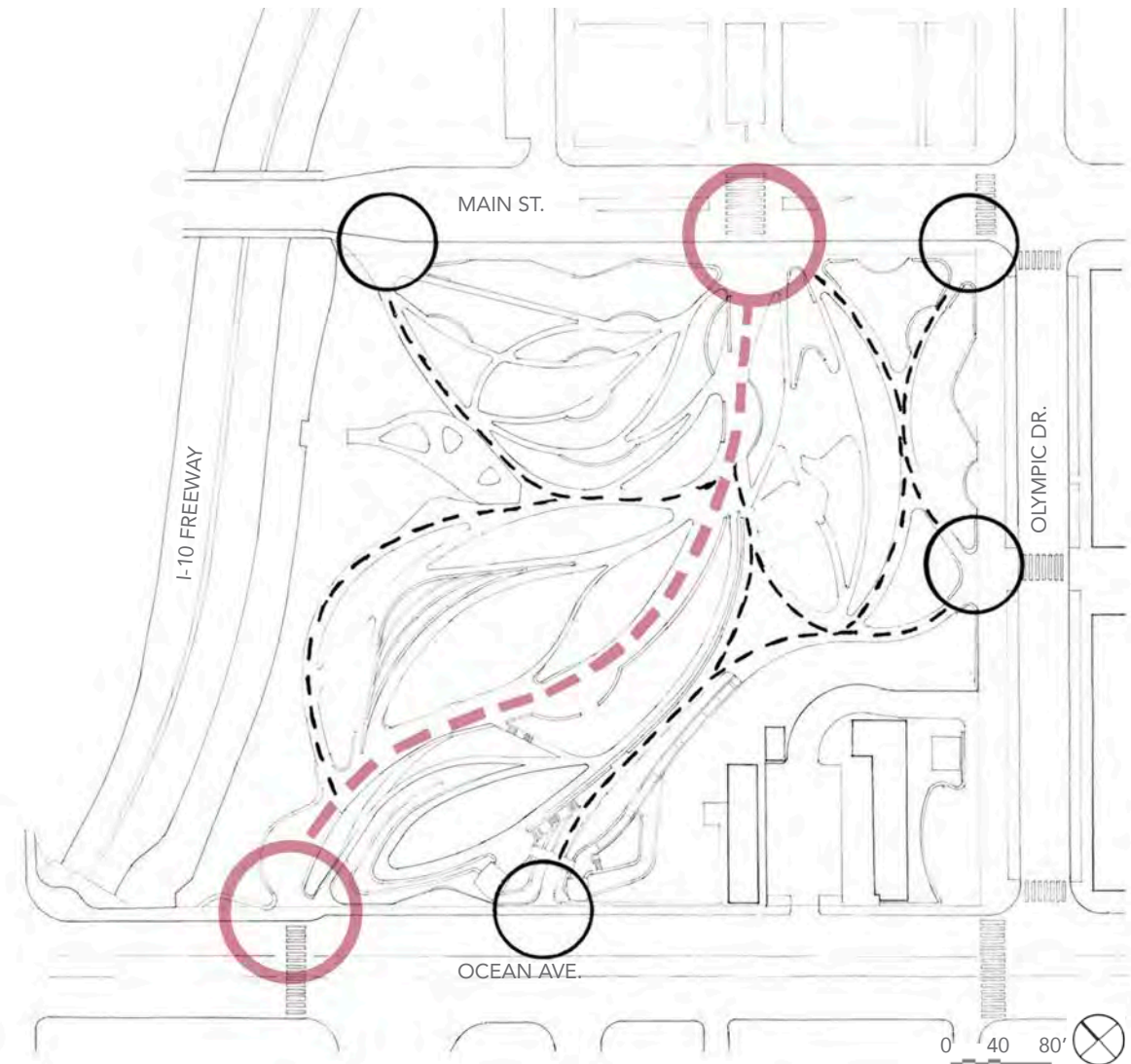
The paving materials used on the park's pathways are selected according to the hierarchy of each path.

A simpler **concrete paving** is used for the paths that slope up the hills to the vista points.

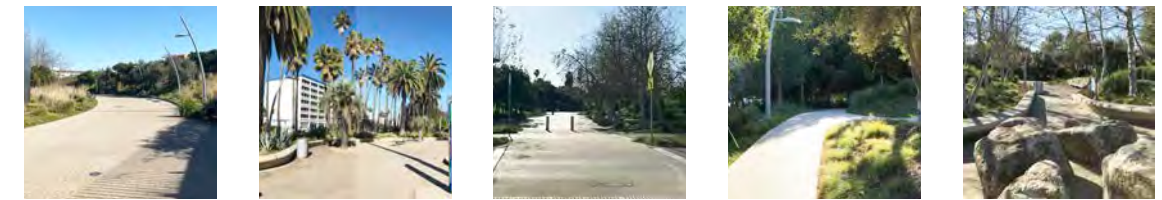
The **main axis** and important connections are covered in **large aggregate** pavers, while minor connections use the same kind of paving but with a smaller grain.

The picnic areas are covered in softer **decomposed granite**, and the children's play station uses **rubber paving**.

PEDESTRIAN CIRCULATION



- CIRCULATION - PRIMARY
- CIRCULATION - SECONDARY
- ACCESS POINT - PRIMARY
- ACCESS POINT - SECONDARY



PRIMARY PATH OCEAN AVE. ACCESS MAIN ST. ACCESS SECONDARY PATH SECONDARY ACCESS

The primary axis circulation is clearly stated from the two main access points of the park.

Four **secondary access points** are distributed throughout the perimeter of the park, integrating it into the urban fabric and connecting the adjacent streets to different areas of the park.

Located on Main St. and Ocean Ave, both access points are **wide** and have **water features** that welcome the user into the park. The main axis circulation is also wide and open.

ANALYSIS DIAGRAMS: NATURAL COMPONENTS

TREES



- EXISTING TREES
- PROPOSED TREES

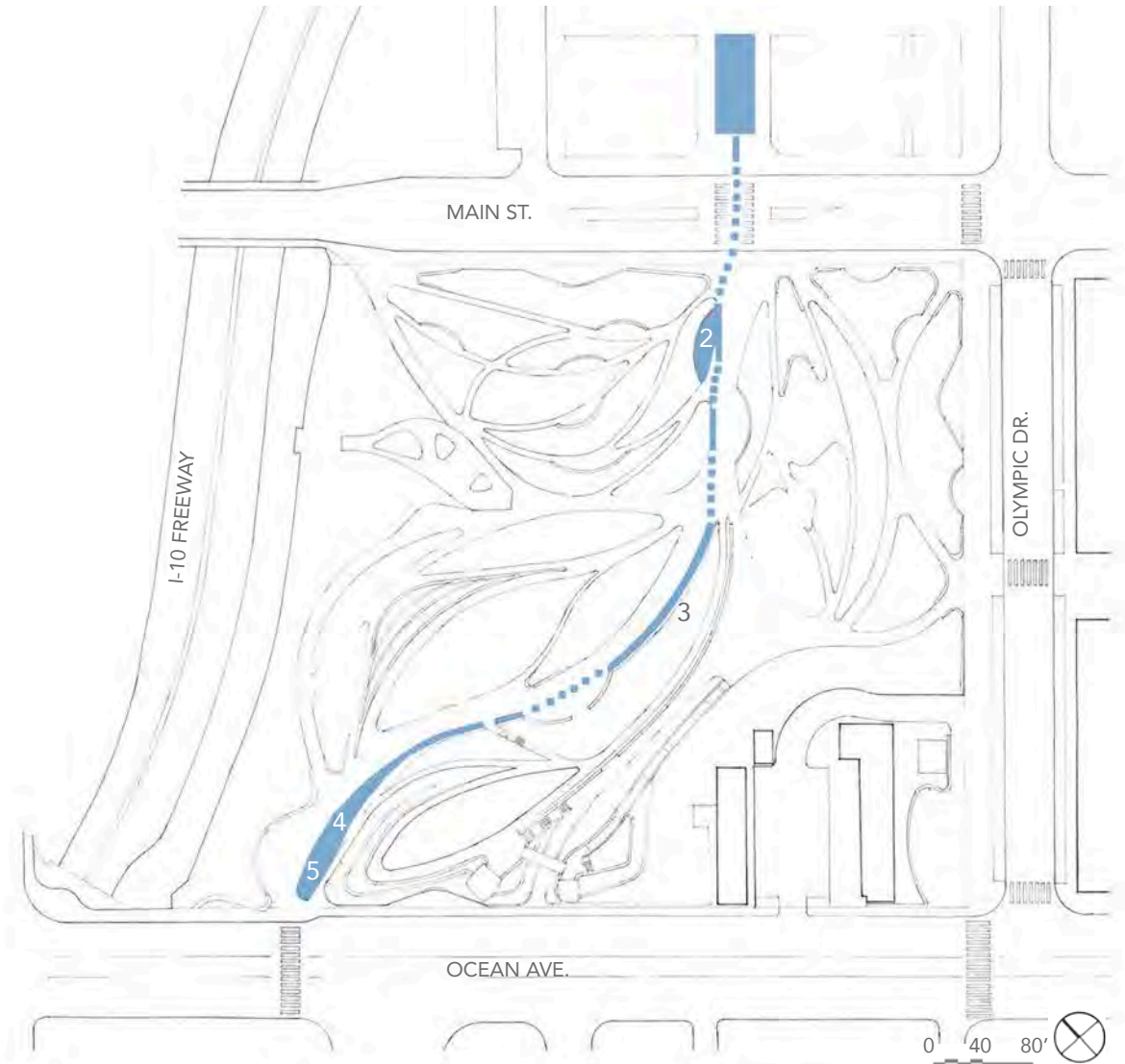


1. EXISTING FICUS TREES 2. EXISTING MORETON BAY FIG TREE 3. NEW PINE TREES 4. NEW OLIVE TREES 5. NEW SYCAMORE TREES

A challenging aspect of preparing the site for construction was **relocating existing trees**, including a trio of ficus trees known as 'The Three Amigos'. Existing trees were **preserved**, and over 300 new ones were added to create strategic canopy zones.

The new trees are grouped in five categories: **Sycamore mix, Oak + Olive mix, Pine mix, Specimen mix, Fig mix and Palm trees.**

WATER FLOW



- WATER FEATURES
- WATER PATH



1. CITY HALL WATER FEATURE 2. MAIN STREET WATER FEATURE 3. WATER RUNNEL 4. OCEAN AVE. WATER FEATURE 5. OCEAN AVE. WATER FEATURE

Tongva Park's water feature system is inspired by an **arroyo** that used to exist on the site, where rivers washed down the cliff to the ocean.

Following a **single long path**, the different water features read as one.

The water path begins at City Hall with a gently stepped fountain, crosses Main St. and emerges in a waterfall, then travels along the main path all the way to Ocean Avenue, culminating in a large fountain at the park's entrance.

DRAWINGS AND PERSPECTIVES



ILLUSTRATIVE PLAN



EXISTING 'THREE AMIGOS' FICUS TREES

EXISTING MORETON BAY FIG

PUBLIC ART

WATER FEATURE

WATER FEATURE

PLAY AREA

PUBLIC RESTROOMS

OCEAN OVERLOOK

ILLUSTRATIVE PLAN
1" = 80'



TREE MAP



LEGEND

- SYCAMORE MIX
- OAK + OLIVE MIX
- PINE MIX
- SPECIMEN MIX
- FIG MIX
- PALM TREES
- + EXISTING TREES
- X RELOCATED TREES









TREE MAP
1" = 80'



PLANTING ZONES



LEGEND

-  NATIVE SHRUBS
-  PERIMETER MIX
-  FEATURE GARDENS
-  MEADOW HIGHLIGHTS
-  DRY MEADOW
-  MOIST MEADOW
-  TURF GRASS
-  PALM + CYCAD MIX

- NATIVE SHRUBS - COASTAL SCRUB**
- *Rhus integrifolia* Lemonade Berry
 - *Artemisia californica* California Sagebrush
 - *Lygeum spartium* Esparto Grass

- PERIMETER MIX**
- *Lygeum spartium* Esparto Grass
 - *Agave attenuata* Foxtail Agave
 - *Agave vilmoriniana* Octopus Agave
 - *Senecio talinoides* Blue Finger
 - *Aloe plicatilis* Fan Aloe

- FEATURE GARDENS**
- *Aeonium arboreum* Purple Queen
 - *Agave attenuata* Foxtail Agave
 - *Anigozanthos rufus* Kangaroo Paw
 - *Lygeum spartium* Esparto Grass
 - *Furcraea macdougallii* Furcraea
 - *Kniphofia triangularis* Dwarf Red Hot Poker

- MEADOW PLANTING**
- *Carex pansa* California Meadow Sedge
 - *Lygeum spartium* Esparto Grass
 - *Pennisetum spathiolatum* Slender Veldt Grass
 - *Clarkia amoena* Farewell To Spring
 - *Lupinus excubitus* Grape Soda Lupine
 - *Muhlenbergia 'Pink Flamingo'* Pink Flamingo

PLANTING ZONES
1" = 80'

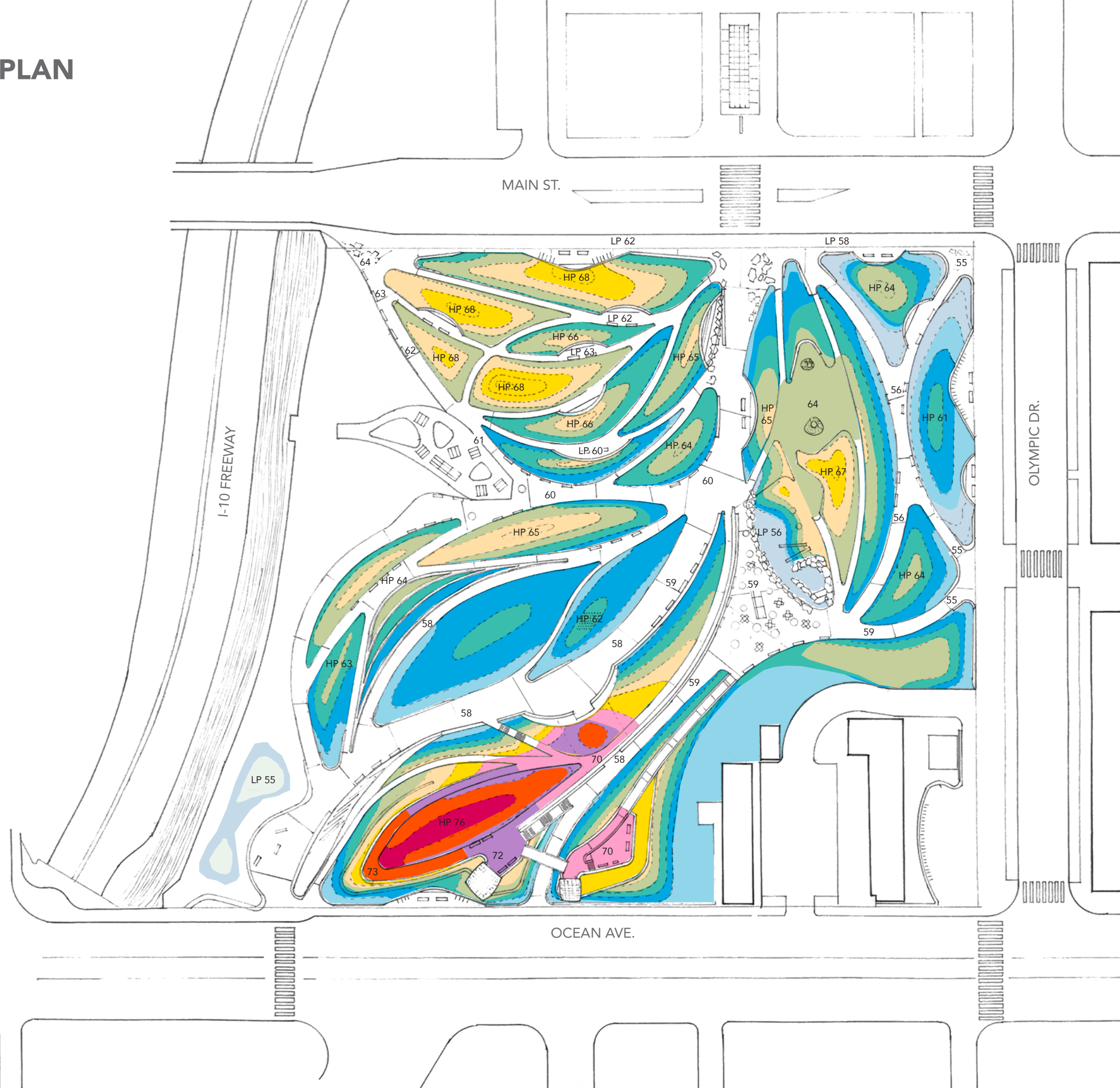
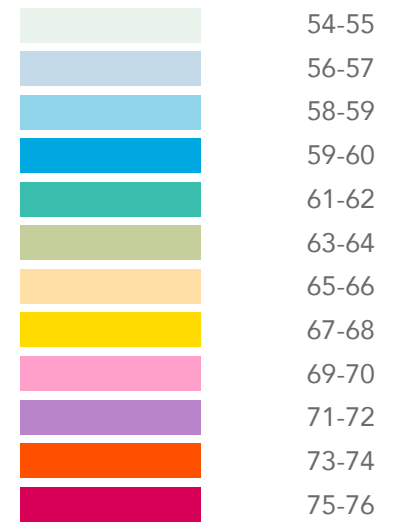


CONTOURS PLAN

LEGEND

ELEVATION INTERVAL = 2'

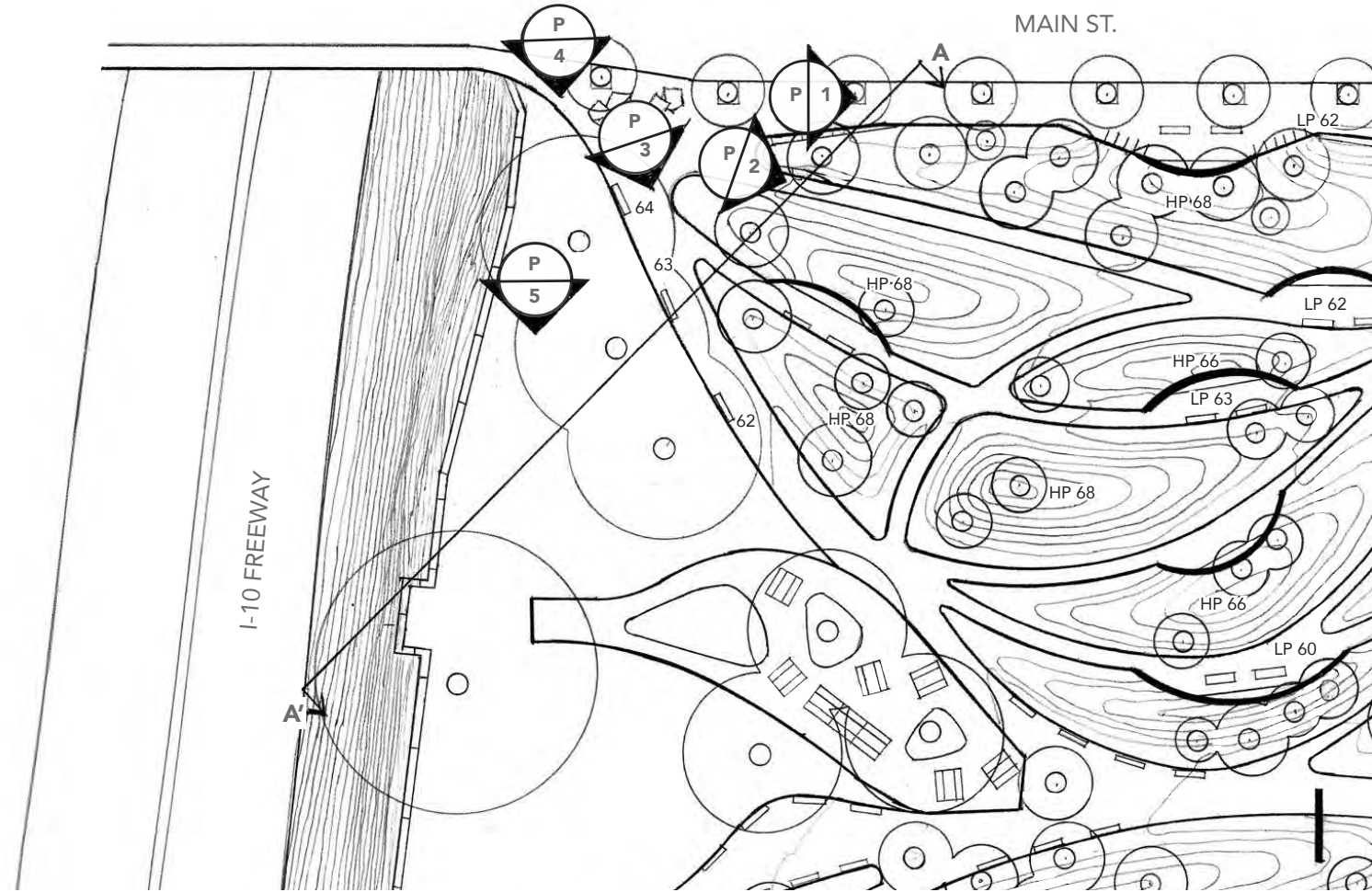
ELEVATION (FEET)



CONTOURS PLAN
1" = 80'



N-W CORNER ENLARGEMENT

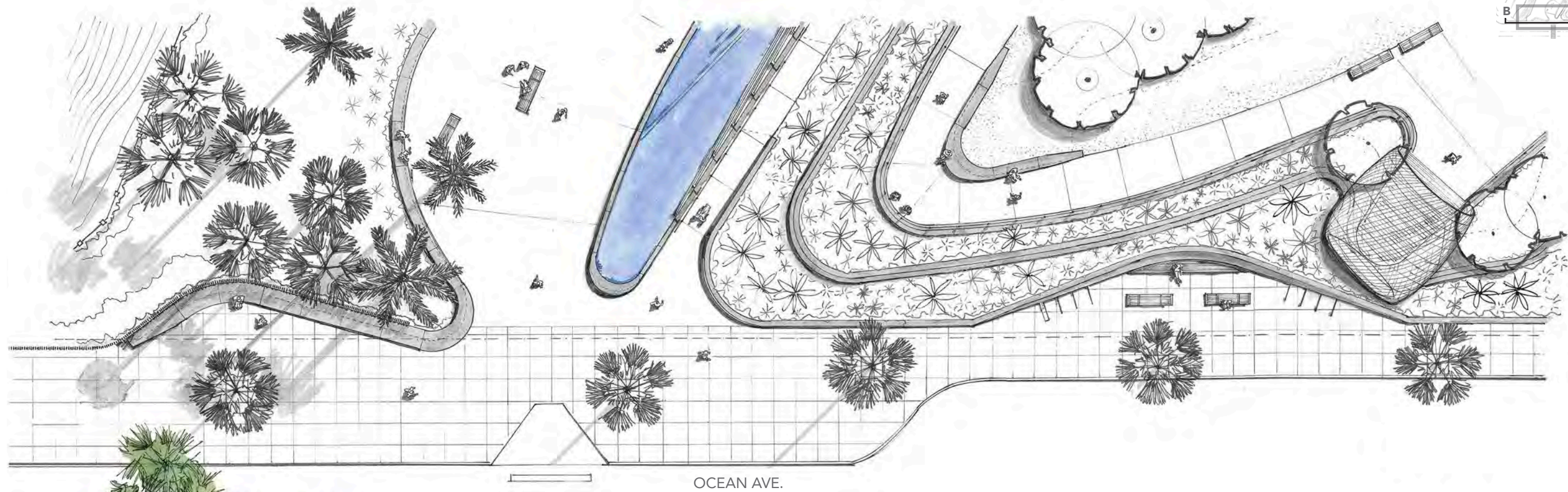
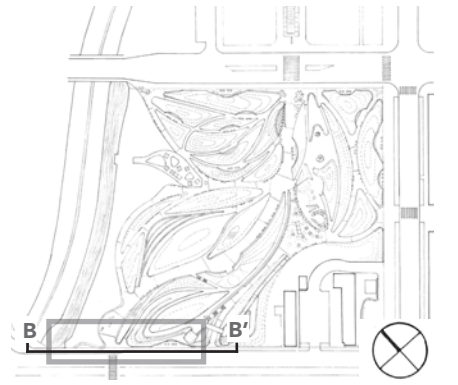


LEGEND

- RETAINING WALL
- FENCE
- CONTOURS
- CONTOUR INTERVAL = 1'



OCEAN AVE. EDGE ENLARGEMENT

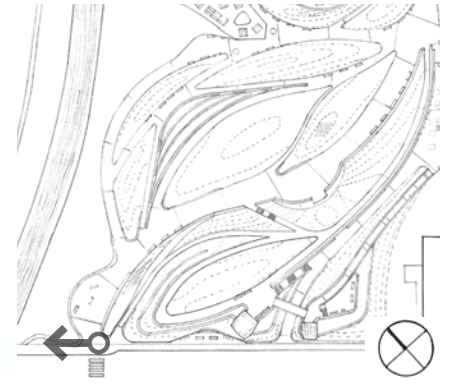


PLAN VIEW
1" = 20'



SECTION - ELEVATION B-B'
1" = 20'









GARDEN HILL



GATHERING HILL



DISCOVERY HILL



OBSERVATION HILL



SUMMARY

- **Community participation** throughout the design process along with careful planning by the landscape architects have turned what used to be a parking lot into a green space that is the **heart of the neighborhood**.

- Thanks to its **diversity of spaces**, the park is appealing to locals and tourists of all ages, and can be used to host special events and festivals.

- The park works as an **urban oasis**, bringing nature, wildlife and water into the center of the city. When you are in this public space you often feel as though you are **far away from the busy city life**.

EXTERNAL SOURCES

IMAGE SOURCES

PAGE 1:

- | | |
|------------------------------|---|
| 1. Downtown Santa Monica: | www.socalmag.com |
| 2. Santa Monica Pier: | exp1.com |
| 3. Santa Monica High School: | livingnewdeal.org |
| 4. Santa Monica City Hall: | livingnewdeal.org |
| 5. Palisades Park: | planetware.com - Copyright: Brad Lane |
| 6. Palisades Park: | timeout.com - Copyright: TaiLi Samson |

PAGE 8:

- | | |
|-------------------------------|--|
| 1. City Hall Water Feature: | architizer.com |
| 2. Main Street Water Feature: | tongvapark.smgov.net |
| 3. Water Runnel: | greenleeandassociates.com |
| 4. Ocean Ave Water Feature: | architizer.com |
| 5. Ocean Ave Water Feature: | santamonicaimages.com |

QUOTE SOURCES

OPENING PAGE:

- | | |
|-----------------------|--|
| - James Corner quote: | smmirror.com
<i>Santa Monica's Newest Park Honors The Tongva Tribe</i>
September, 2013 |
|-----------------------|--|

PAGE 5:

- | | |
|--------------|--|
| - ASLA quote | asla.org
<i>Tongva Park and Ken Genser Square</i>
2018 |
|--------------|--|

