

UCLA COURTYARD OF THEATERS

VERDANT MODERNISM



STAIRS RECEDE INTO NORTH WEST CORNER AND PROVIDE ADDITIONAL SEATING AND VIEWS.

LIGHT WEIGHT TABLES AND CHAIRS ARE NOT FIXED TO COURTYARD FLOOR TO ACCOMMODATE EVENTS AND DAILY USAGE.

NEW FOOTPRINT OF LIGHT WELL PROVIDES ADDITIONAL LIGHT AND ACCOMMODATES GREEN ROOF WITH CASCADING PLANTS.

LARGE IN GROUND PLANTING FLANKS FOUNTAIN AND PROVIDES ADDITIONAL UPWARD INTEREST.

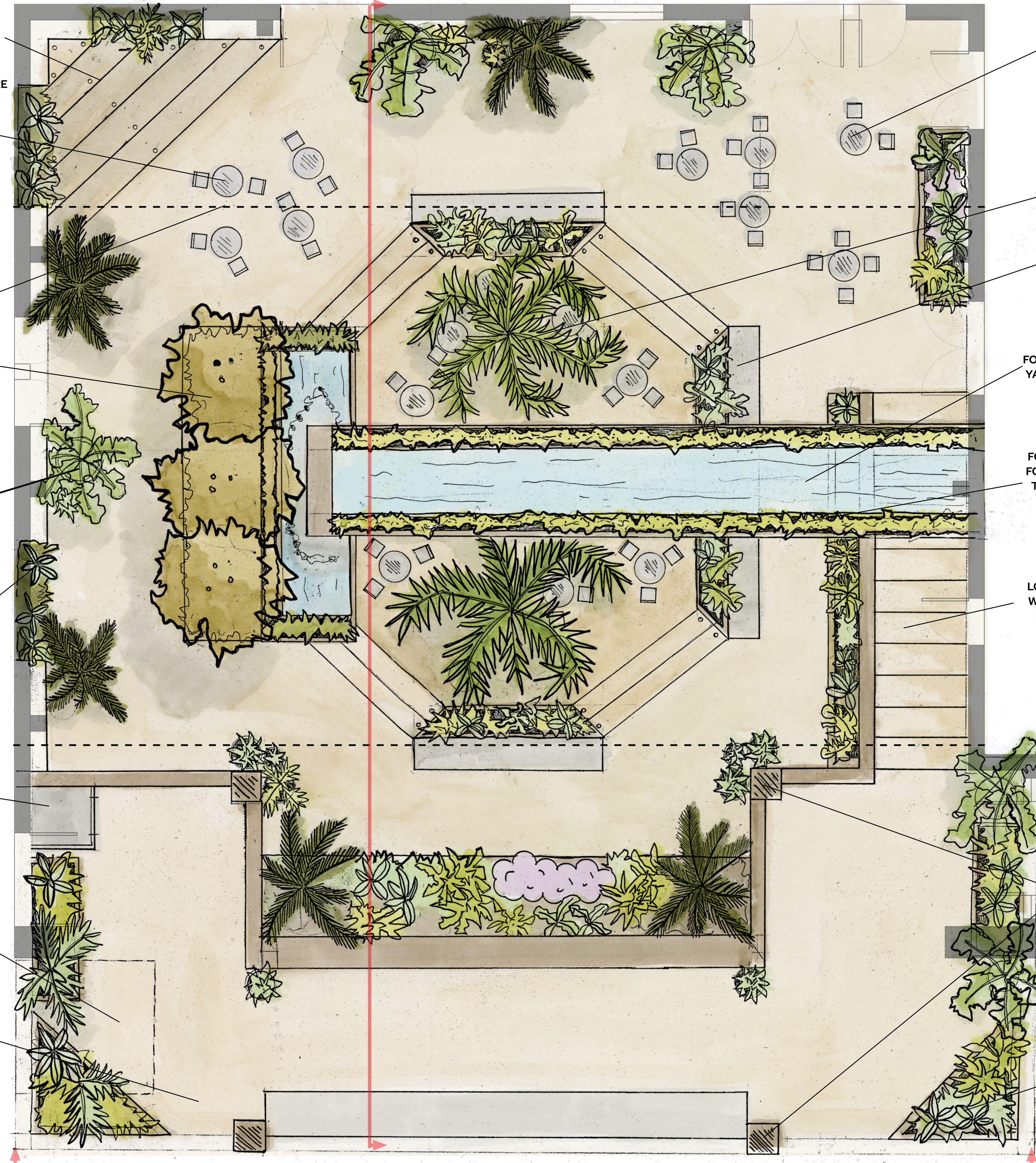
COLLECTION OF TROPICAL TREES AND SHRUBS SOFTEN LARGE WALLS.

DOUBLE-SKIN RECESSED WALL WITH CUT OUTS PROVIDE ADDITIONAL AREAS FOR PLANTING AS WELL AS CREATES DEPTH.

ELEVATOR FOR ADA COMPLIANCE.

TICKET BOOTH ON LOWER LEVEL

SECOND STORY MEZZANINE EXTENDS OUT TOWARD MURPHY SCULPTURE GARDEN AND INSIDE COURTYARD, PROVIDES MULTIFACETED VIEWS INCLUDING MONUMENTAL FOUNTAIN.



ADDITIONAL SEATING.

MATURE PALM TREES SHADE CENTER SEATING AREA.

CAST IN PLACE CONCRETE RAISED PLANTERS WITH BUILT IN SEAT WALLS.

LARGE MONUMENTAL CHANNEL FOUNTAIN CROSSSES LENGTH OF COURTYARD AND TERMINATES IN LARGE CAST IN CONCRETE WEST FACING POOL.

FOUNTAIN CHANNEL RESERVES SPACE FOR PLANTINGS THAT CASCADE DOWN THROUGH THE COURTYARD SEATING AREA.

LONG SHALLOW MONUMENTAL STAIRS WITH VOID CUT OUT BELOW PROVIDES ADDITIONAL DESIGN INTEREST.

COLLECTION OF BANANA, PALM AND FERN TREES.

VINES GROW ON MONUMENTAL POSTS AND COLUMNS.

TRIANGULAR CORNER PLANTERS PROVIDE SPACE FROM PLANTS TO CASCADE OVER THE EDGE OF MEZZANINE.



STUDENT NAME:

AIMEE KIRBY

COURSE:

LANDSCAPE DESIGN 1

INSTRUCTOR:

STEVEN CHAVEZ

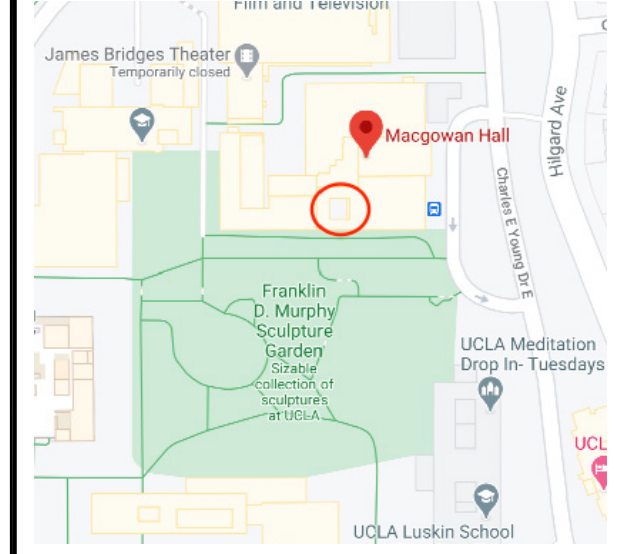
SITE NAME AND ADDRESS:

MACGOWAN HALL
COURTYARD OF
THEATERS
245 CHARLES E YOUNG
DRIVE EAST

DRAWING TITLE:

FINAL DESIGN

AERIAL IMAGE:



DRAWING NOTES:

This design embraces the pre-existing notion of minimalism at The Courtyard of the Theaters and is an exploration of form and function of Modern and Brutalist styles. Taking inspiration from the work of Luis Barragan, Casa Merida by Ludwig Godfrey, as well as Barbican Conservatory. Users enter through two sides of a large modular wall with manually movable panels. These panels can be controlled in response to environmental conditions but also act as a form of interactive sculpture. Immediately you are met with large cast in place concrete planters with a lush, tropical inspired plant palette. Each large planter has a seat wall to accommodate those searching for respite. Users then walk down into a sunken garden and seating space. Looking up you see a monumental, channeled water feature with verdant plantings cascading down. The fountain terminates in a pool on the west side, surrounded by trees and vegetation. You also see the edges of the green roof spilling over the long straight sides, providing ample light to the garden. You will also see a large sculptural, concrete staircase with long and shallow stairs. Plantings below the stairs soften the space. A double-skin recessed wall creates depth and provides space for more tropical plantings. Planters with trees and under plantings are employed through the space to soften corners and doorways. Users have the option to travel to the second-floor mezzanine where you can look out over the large fountain and palm trees or over the Murphy sculpture garden or take a seat for study or rest. The mezzanine has many large, monumental columns for vining plants to grow and large corner planters with vegetation softening the rigid edges. Additional amenities are an elevator provided for ADA compliance as well as a café for nourishment.

SCALE BAR:



DRAWING SCALE:

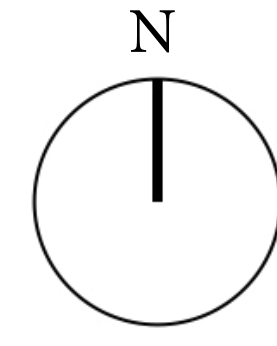
1/4" = 1'-0"

SHEET NUMBER:

L-4

SHEET NUMBER IN SET:

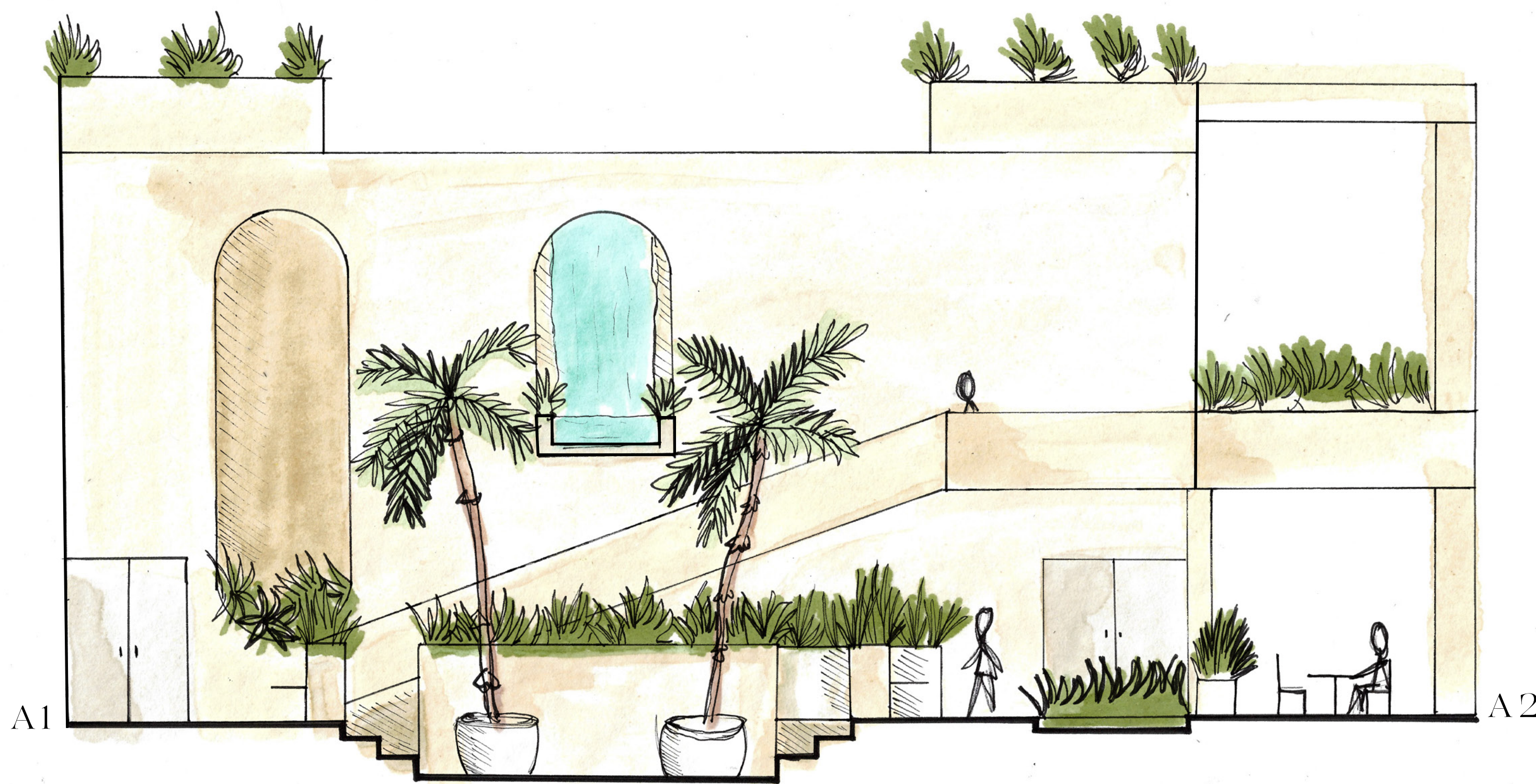
4-6



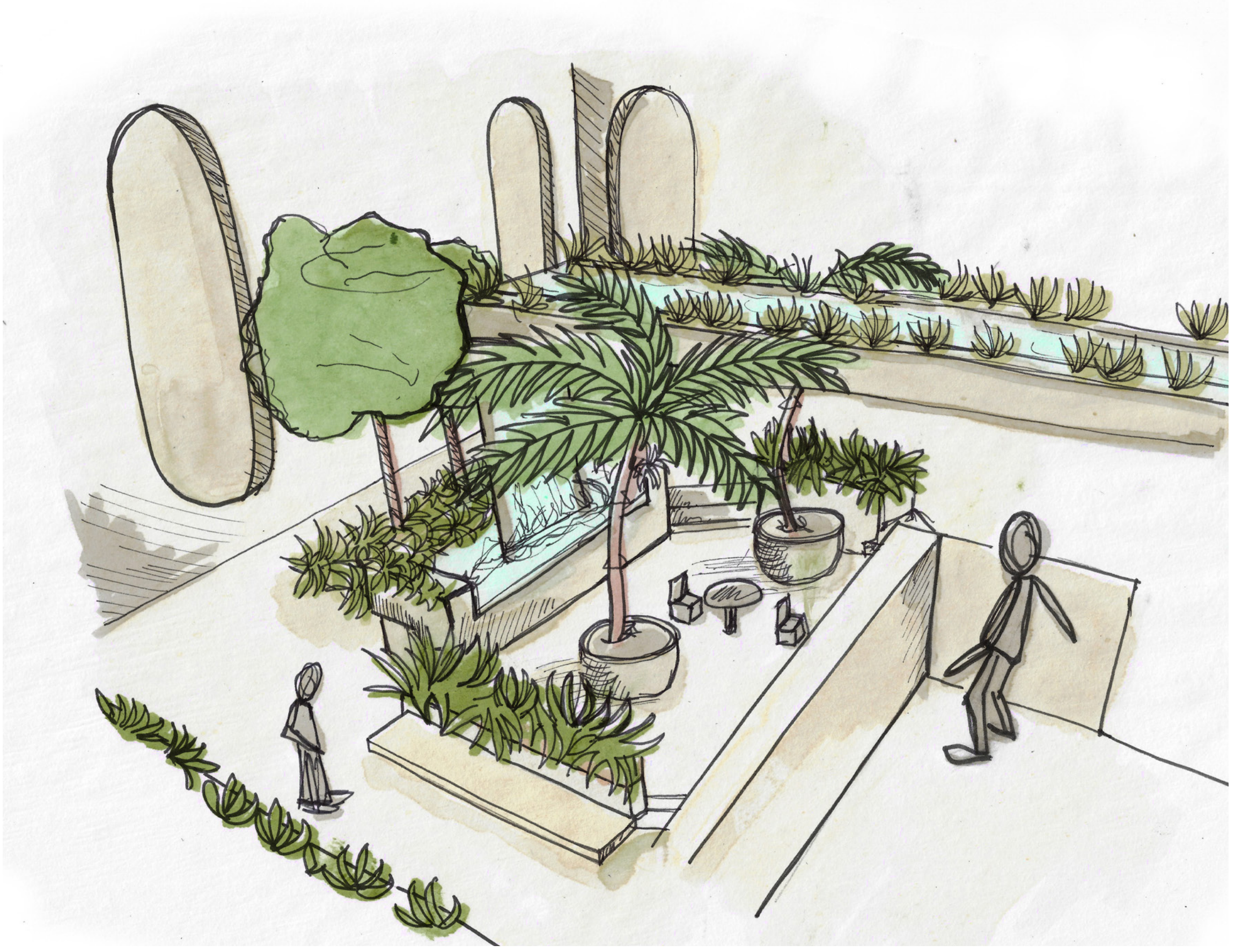
UCLA COURTYARD OF THEATERS

VERDANT MODERNISM

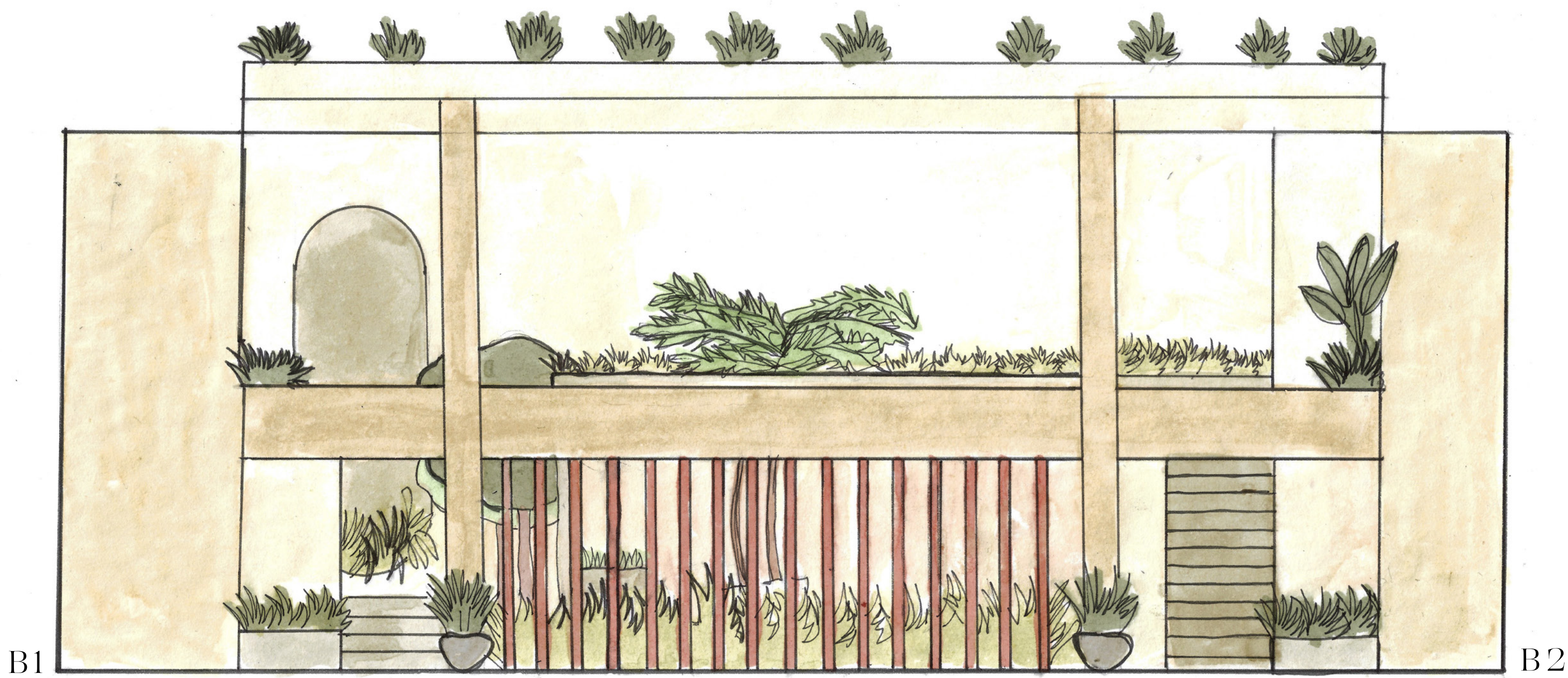
SECTION ELEVATION A



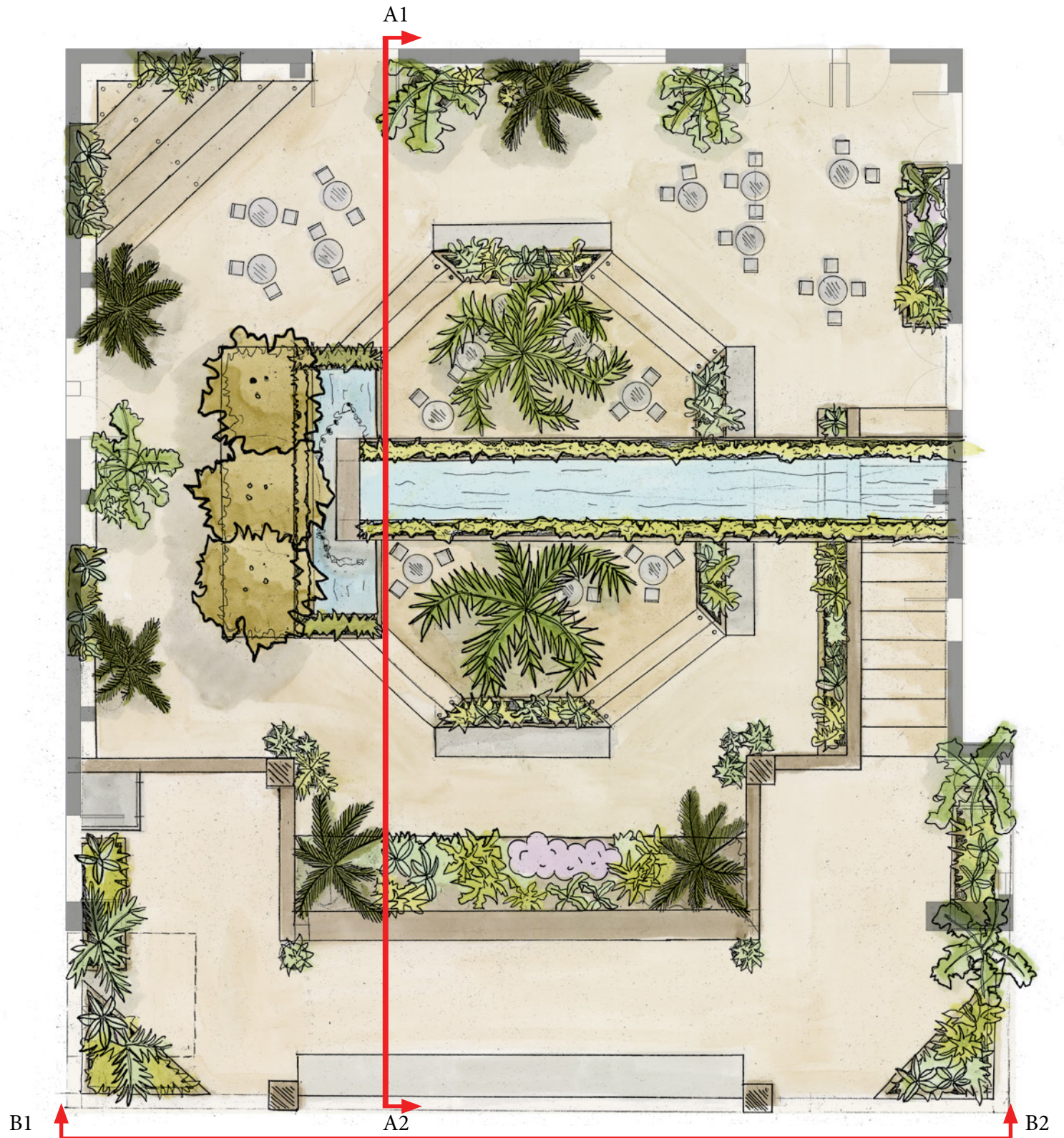
PERSPECTIVE VIEWS

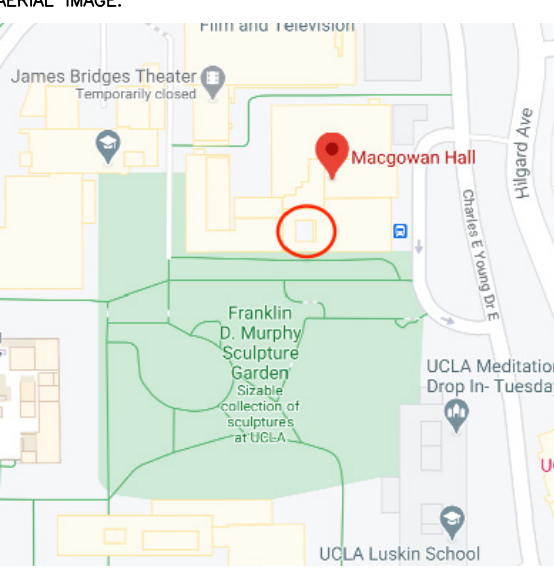


SECTION ELEVATION B



KEY MAP VIEWS

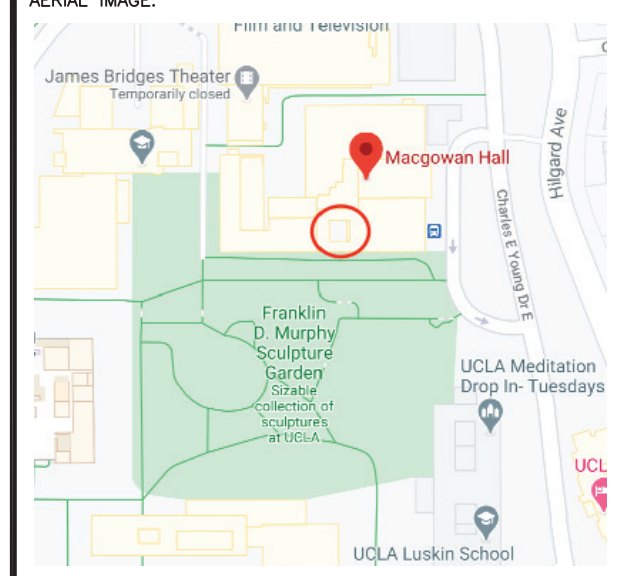



STUDENT NAME: AIMEE KIRBY	
COURSE: LANDSCAPE DESIGN 1	
INSTRUCTOR: STEVEN CHAVEZ	
SITE NAME AND ADDRESS: MACGOWAN HALL COURTYARD OF THEATERS 245 CHARLES E YOUNG DRIVE EAST	
DRAWING TITLE: 2 SECTIONS AND PERSPECTIVE	
AERIAL IMAGE: 	
DRAWING NOTES: This design embraces the pre-existing notion of minimalism at The Courtyard of the Theaters and is an exploration of form and function of Modern and Brutalist styles. Taking inspiration from the work of Luis Barragan, Casa Merida by Ludwig Godfrey, as well as Barbican Conservatory. Users enter through two sides of a large modular wall with manually movable panels. These panels can be controlled in response to environmental conditions but also act as a form of interactive sculpture. Immediately you are met with large cast in place concrete planters with a lush, tropical inspired plant palette. Each large planter has a seat wall to accommodate those searching for respite. Users then walk down into a sunken garden and seating space. Looking up you see a monumental, channeled water feature with verdant plantings cascading down. The fountain terminates in a pool on the west side, surrounded by trees and vegetation. You also see the edges of the green roof spilling over the long straight sides, providing ample light to the garden. You will also see a large sculptural, concrete staircase with long and shallow stairs. Plantings below the stairs soften the space. A double-skin recessed wall creates depth and provides space for more tropical plantings. Planters with trees and under plantings are employed through the space to soften corners and doorways. Users have the option to travel to the second-floor mezzanine where you can look out over the large fountain and palm trees or over the Murphy sculpture garden or take a seat for study or rest. The mezzanine has many large, monumental columns for vining plants to grow and large corner planters with vegetation softening the rigid edges. Additional amenities are an elevator provided for ADA compliance as well as a café for nourishment.	
SCALE BAR: 0' 5' 10' 20'	
DRAWING SCALE: 3/16" = 1' - 0"	
SHEET NUMBER: L-5	SHEET NUMBER IN SET: 5-6

UCLA COURTYARD OF THEATERS

VERDANT MODERNISM



STUDENT NAME: AIMEE KIRBY	
COURSE: LANDSCAPE DESIGN 1	
INSTRUCTOR: STEVEN CHAVEZ	
SITE NAME AND ADDRESS: MACGOWAN HALL COURTYARD OF THEATERS 245 CHARLES E YOUNG DRIVE EAST	
DRAWING TITLE: FINAL DESIGN	
AERIAL IMAGE: 	
DRAWING NOTES: This design embraces the pre-existing notion of minimalism at The Courtyard of the Theaters and is an exploration of form and function of Modern and Brutalist styles. Taking inspiration from the work of Luis Barragan, Casa Merida by Ludwig Godfrey, as well as Barbican Conservatory. Users enter through two sides of a large modular wall with manually movable panels. These panels can be controlled in response to environmental conditions but also act as a form of interactive sculpture. Immediately you are met with large cast in place concrete planters with a lush, tropical inspired plant palette. Each large planter has a seat wall to accommodate those searching for respite. Users then walk down into a sunken garden and seating space. Looking up you see a monumental, channeled water feature with verdant plantings cascading down. The fountain terminates in a pool on the west side, surrounded by trees and vegetation. You also see the edges of the green roof spilling over the long straight sides, providing ample light to the garden. You will also see a large sculptural, concrete staircase with long and shallow stairs. Plantings below the stairs soften the space. A double-skin recessed wall creates depth and provides space for more tropical plantings. Planters with trees and under plantings are employed through the space to soften corners and doorways. Users have the option to travel to the second-floor mezzanine where you can look out over the large fountain and palm trees or over the Murphy sculpture garden or take a seat for study or rest. The mezzanine has many large, monumental columns for vining plants to grow and large corner planters with vegetation softening the rigid edges. Additional amenities are an elevator provided for ADA compliance as well as a café for nourishment.	
SCALE BAR: 0' 5' 10' 20' 	
DRAWING SCALE: 1 / 4" = 1' - 0"	
SHEET NUMBER: L-4	SHEET NUMBER IN SET: 4-6