

# UCLA COURTYARD OF THEATERS AT MACGOVAN HALL

UCLA EXTENSION, LANDSCAPE DESIGN 1, FALL 2020  
STUDENT: ANNA ASNIS  
INSTRUCTOR: STEVEN CHAVES, PLA





ORIGINAL DESIGN, C. 1960



N VIEW FROM ENTRANCE, TICKET BOOTH



NE CORNER, DOORS & CONCRETE



THEATER FACULTY LUNCH - USE OF SPACE, NW CORNER



DESIGN SHOWCASE EVENT - USE OF SPACE, ENTRANCE



ENTRANCE SCREEN & DOORS - SCULPTURE



TREES LOOKING FOR LIGHT



GIRDLED TREE TRUNK BY METAL GUARD



THEATER STUDENT LUNCH, USE OF SPACE



THEATER EVENT SELFIE IN FRONT OF THE POSTER

STUDENT:  
ZAMIR ADWIS

COURSE:  
LANDSCAPE DESIGN I

INSTRUCTOR:  
STEVEN CHAVEZ, PLA

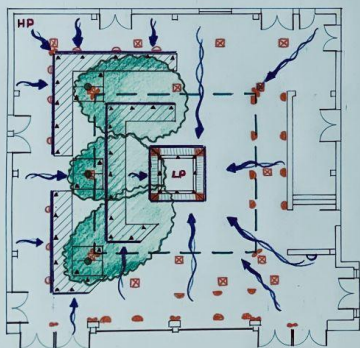
UCLA COURTYARD OF  
THEATERS AT MACEDONIAN  
HALL  
235 CHARLES E. YOUNG DR E  
LOS ANGELES, CA 90024

SITE INVENTORY AND  
ANALYSIS.



NOTES:

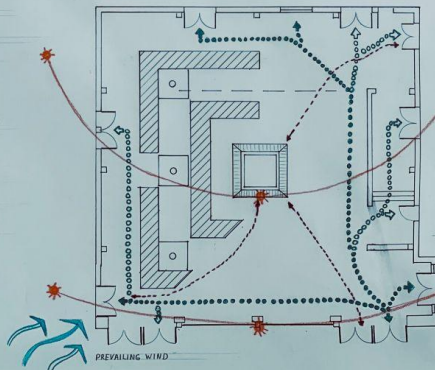
SITE INVENTORY



LEGEND

- RAISED BEDS
- BENCH
- HP LP** HIGH POINT, LOW POINT
- SKYLIGHT
- DRAINAGE INLETS
- DRAINAGE DIRECTION
- DOWNSPOUT
- BOLLARD LIGHT
- CEILING LIGHT
- FLOOD LIGHT
- BENCH LIGHT
- IRRIGATION HEAD
- TREE & CROWN DIRECTION

SITE ANALYSIS



LEGEND

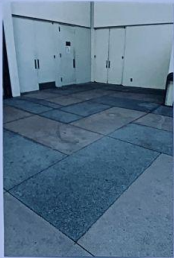
- PRIMARY EVENT CIRCULATION
- SECONDARY EVENT CIRCULATION
- LUNCH TIME CIRCULATION



SCALE: 1/8" = 1'-0"



L1 1 OF 3



DOORS



TALL WALLS



LACK OF LIGHT



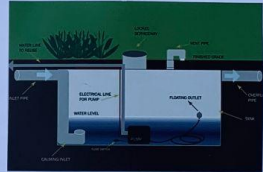
ACOUSTIC PANELS



CANTILEVER DECK



STACKABLE FURNITURE



WATER CISTERN



INVERTED DRAINAGE

STUDENT:  
ANNA ADNIS






COURSE:  
LANDSCAPE DESIGN I  
INSTRUCTOR:  
STEVEN CHAVEZ, PLA

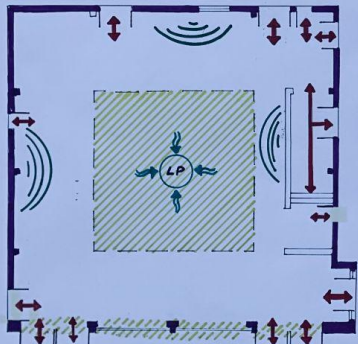
UCLA COURTYARD OF  
THEATERS AT MACGOVAN  
HALL  
RAC: CHARLES E. YOUNG DRE  
LOS ANGELES, CA 90024

SITE CONSTRAINTS  
AND OPPORTUNITIES



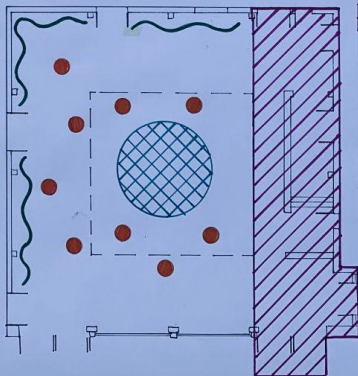
SITE CONSTRAINTS

-  MULTIPLE DOORS
-  TALL WALLS
-  DAYLIGHT SOURCE
-  LOW POINT AND WATER DRAINAGE
-  NOISE

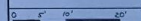


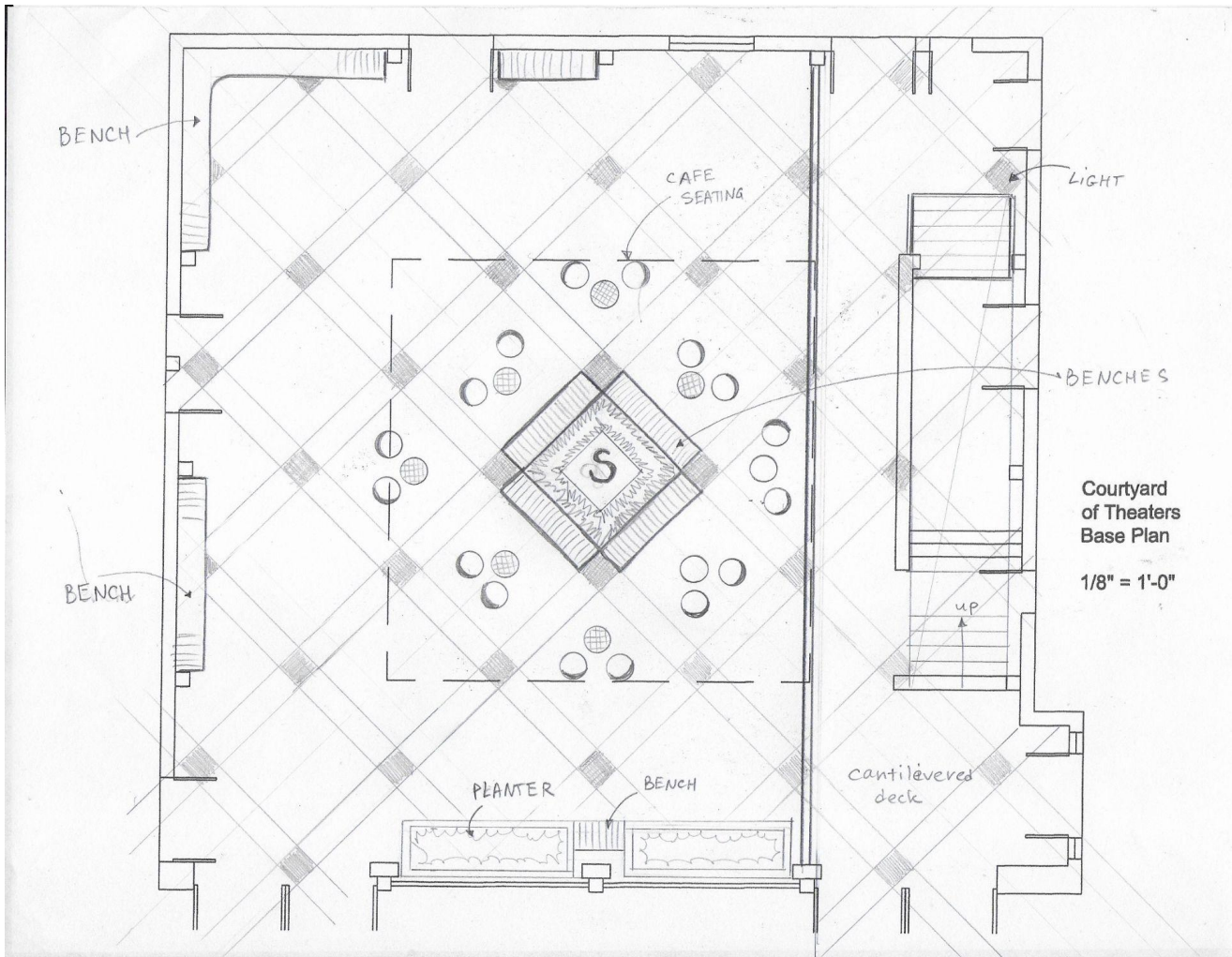
SITE OPPORTUNITIES

-  ACOUSTIC PANELS
-  SECOND FLOOR
-  WATER CISTERN
-  MOVABLE FURNITURE



SCALE: 1/8" = 1'-0"





BENCH

CAFE SEATING

LIGHT

BENCHES

Courtyard of Theaters  
Base Plan

1/8" = 1'-0"

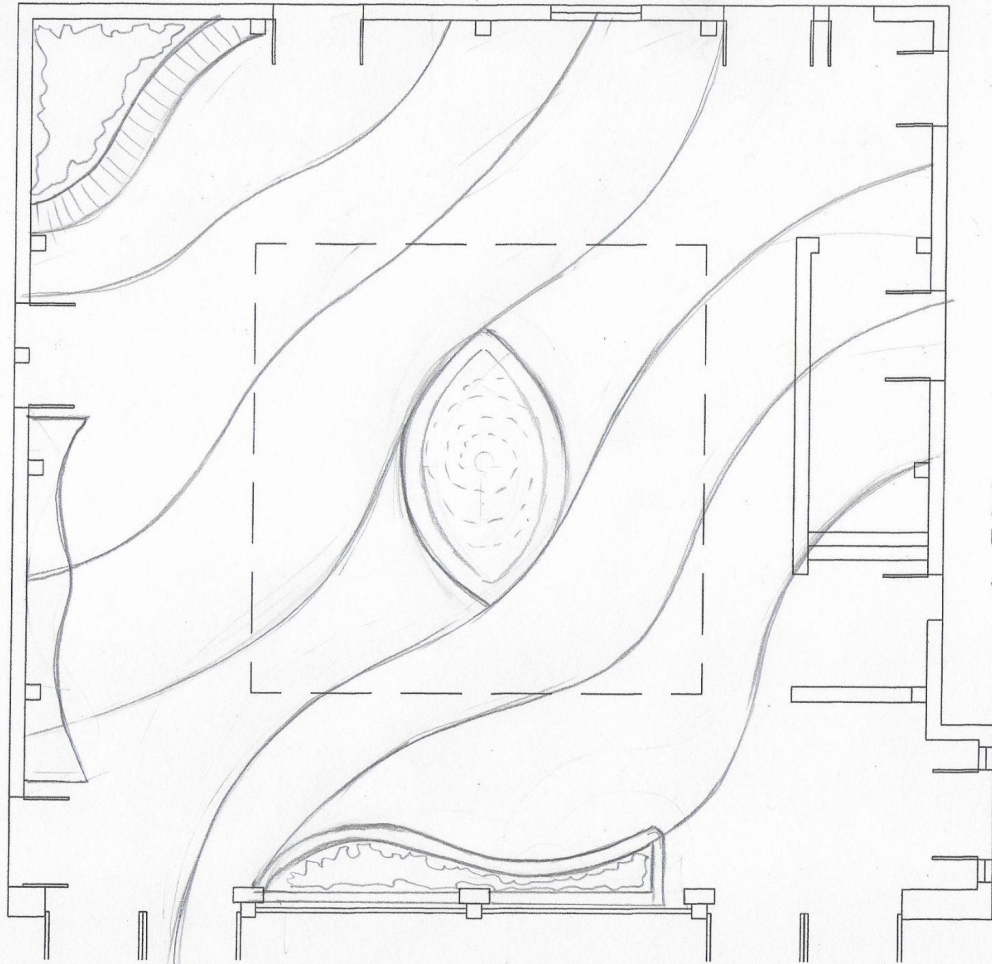
BENCH

up

PLANTER

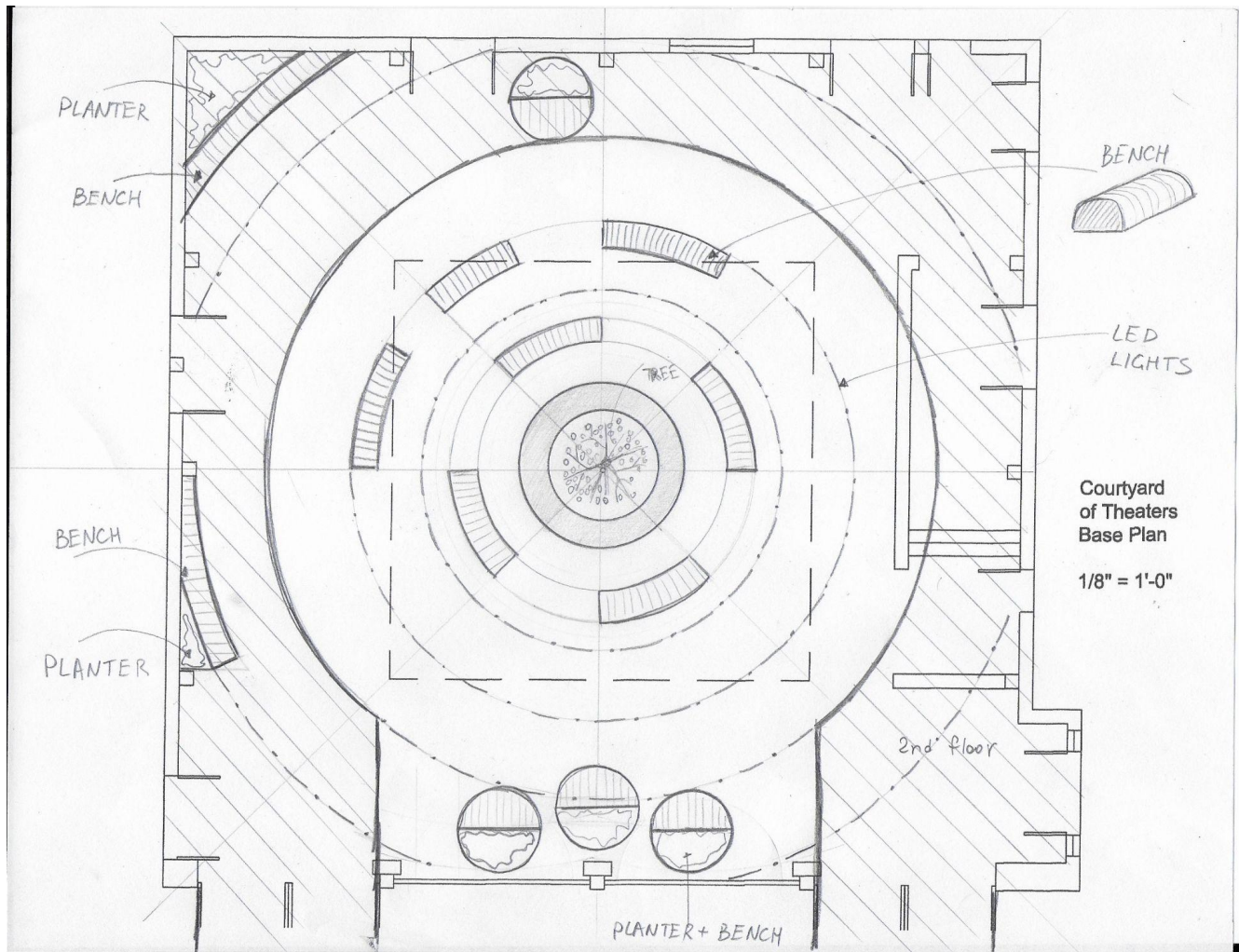
BENCH

Cantilevered  
deck

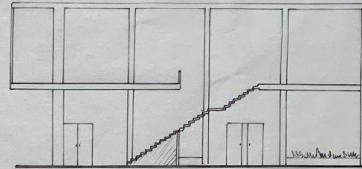
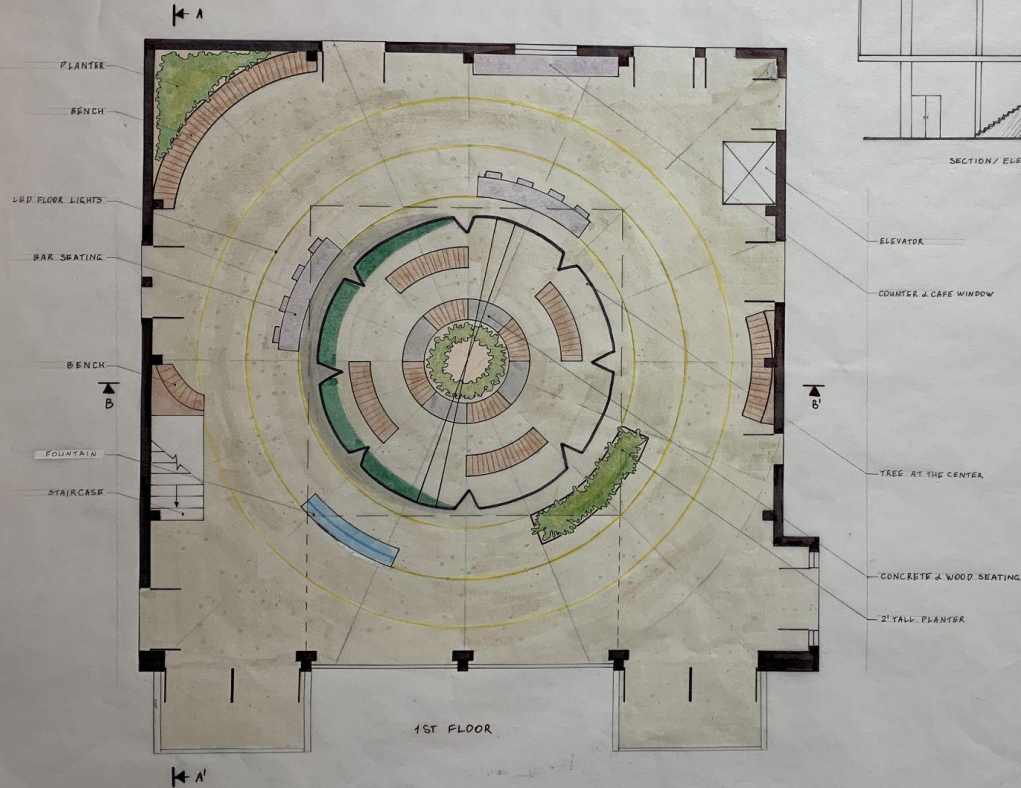


Courtyard  
of Theaters  
Base Plan

1/8" = 1'-0"



# TREE TOP CAFE AND LOUNGE



SECTION / ELEVATION A-A'

STUDENT:  
ANNA ASHID

COURSE:  
LANDSCAPE DESIGN I

INSTRUCTOR:  
STEVEN CHAVEZ, PLA

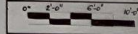
UCLA COURT YARD OF  
THEATERS AT MAGDOVAN  
HALL  
235 CHARLES YOUNG DR  
LOS ANGELES, CA 90024

## FINAL SITE PLAN



DESIGN STATEMENT  
TWO MAIN ORIGINAL DESIGN  
ELEMENTS ARE KEPT - CEILING  
DRAWING AND SCAM, BOBBI  
THE SECOND FLOOR WITH TWO  
CANTILEVERED DECKS. SECOND  
FLOOR HAS A CENTRAL ROOM  
WITH A TREE GROWING THROUGH  
IT. THE MAIN FLOOR WILL  
HAVE A CASE WOODY WITH A  
COUNTER. THE CENTER OF  
THE FIRST FLOOR HAS A PLANTER  
WITH ONE BUCKET AND SOME  
LOW PLANTINGS UNDERNEATH.  
WATER WILL FLOW TO THE  
CENTRAL PLANTER. AROUND  
THE PLANTER THERE IS A  
CONCRETE BORDER WITH SEATING.  
ADDITIONAL BENCHES, BAR  
SEATING, ANOTHER PLANTER  
AND A FOUNTAIN ARE  
PLACED AROUND THE CENTRAL  
PLANTER. THERE ARE LED  
LIGHTING STRIPS EMBEDDED  
INTO FLOOR. THERE ARE  
MORE AREAS WITH BENCH  
SEATING ALONG WALLS. THE  
SECOND FLOOR WILL HAVE  
TABLE SEATING & SEVERAL  
LOUNGE CHAIRS. TREE CANOPY  
WILL CREATE A SPECIAL  
ATMOSPHERE ON THE SECOND  
FLOOR. THIS, THE NAME -  
"TREE TOP CAFE" AND  
LOUNGE.

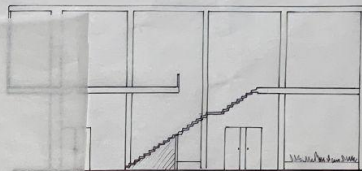
SCALE: 1/4" = 1'-0"



L-5 5 OF 7



# TREE TOP CAFE AND LOUNGE



SECTION/ELEVATION A-A'

CAFE WINDOW

THE CENTRA

WOOD SEATING

PLANTER

STUDENT:  
ANNA ASHID

COURSE:  
LANDSCAPE DESIGN I

INSTRUCTOR:  
STEVEN CHAVEZ, PLA

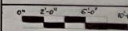
UCLA COURT YARD OF  
THEATERS AT MAGGOVAN  
HALL  
245 CHARLES YOUNG DR E  
LOS ANGELES, CA 90024

FINAL SITE PLAN



DESIGN STATEMENT  
TWO MAIN ORIGINAL DESIGN  
ELEMENTS ARE KEPT - CEILING  
DROPPING AND SCAIM, ABOVE  
THE SECOND FLOOR WITH TWO  
CANTILEVERED PICKS. SECOND  
FLOOR HAS A CENTRAL GROUND  
WITH A TREE GROWING THROUGH  
IT. THE MAIN FLOOR WILL  
HAVE A CAFE WINDOW WITH A  
COUNTER. THE CENTER OF  
THE FIRST FLOOR HAS A PLANTER  
WITH ONE TREE AND SOME  
LOW PLANTINGS UNDERNEATH.  
WATER WILL FLOW TO THE  
CENTRAL PLANTER. AROUND  
THE PLANTER THERE IS A  
CONCRETE BORDER WITH SEATING.  
ADDITIONAL BENCHES ARE  
PLACED AROUND THE CENTRAL  
PLANTER. THERE ARE LED  
LIGHTING STRIPS EMBEDDED  
INTO FLOOR. THERE ARE TWO  
MORE AREAS WITH BENCH  
SEATING ALONG WALLS. THE  
SECOND FLOOR WILL HAVE  
TABLE SEATING & SEVERAL  
LOUNGE CHAIRS. RECEPTION  
WILL CREATE A SPECIAL  
ATMOS HERE ON THE SECOND  
FLOOR. THIS, THE NAME -  
"TREE TOP CAFE" AND  
LOUNGE.

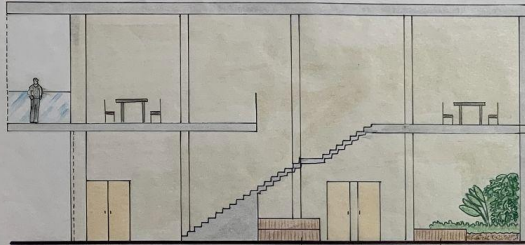
SCALE: 1/4" = 1'-0"



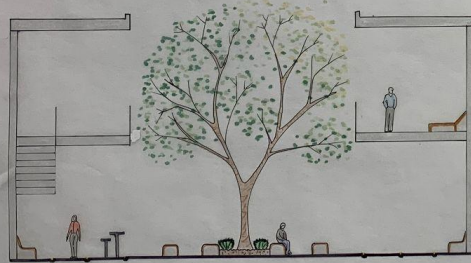
L5

5 OF 7

# SECTIONS/ELEVATIONS & PERSPECTIVE



A-A'



B-B'

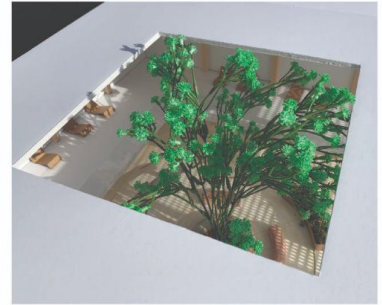
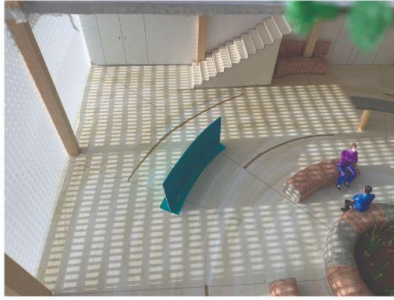
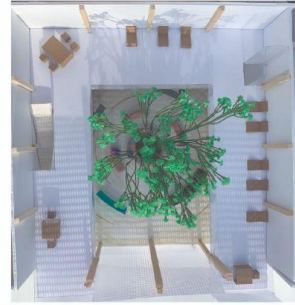
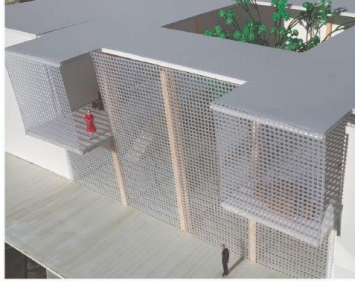
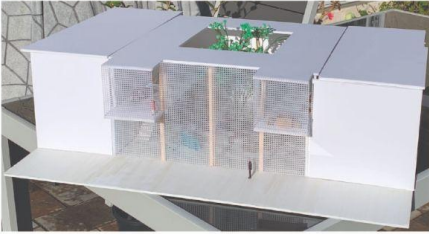
SECTIONS/ELEVATIONS



PERSPECTIVE

STUDENT: ANNA ASHIS
COURSE: LANDSCAPE DESIGN I
INSTRUCTOR: STEVEN CHAVEZ, PLA
UCLA COURTYARD OF THEATERS AT MAGGOVAN HALL 145 CHARLES YOUNG DR LOS ANGELES, CA. 90024
SECTION / ELEVATION PERSPECTIVE
SCALE: $\frac{3}{16}'' = 1'-0''$ 
L-6 6 OF 7





LD1 MODEL PHOTOS  
UCLA COURTYARD OF THEATERS AT MACGOWAN HALL  
ANNA ASNIS, FALL 2020