

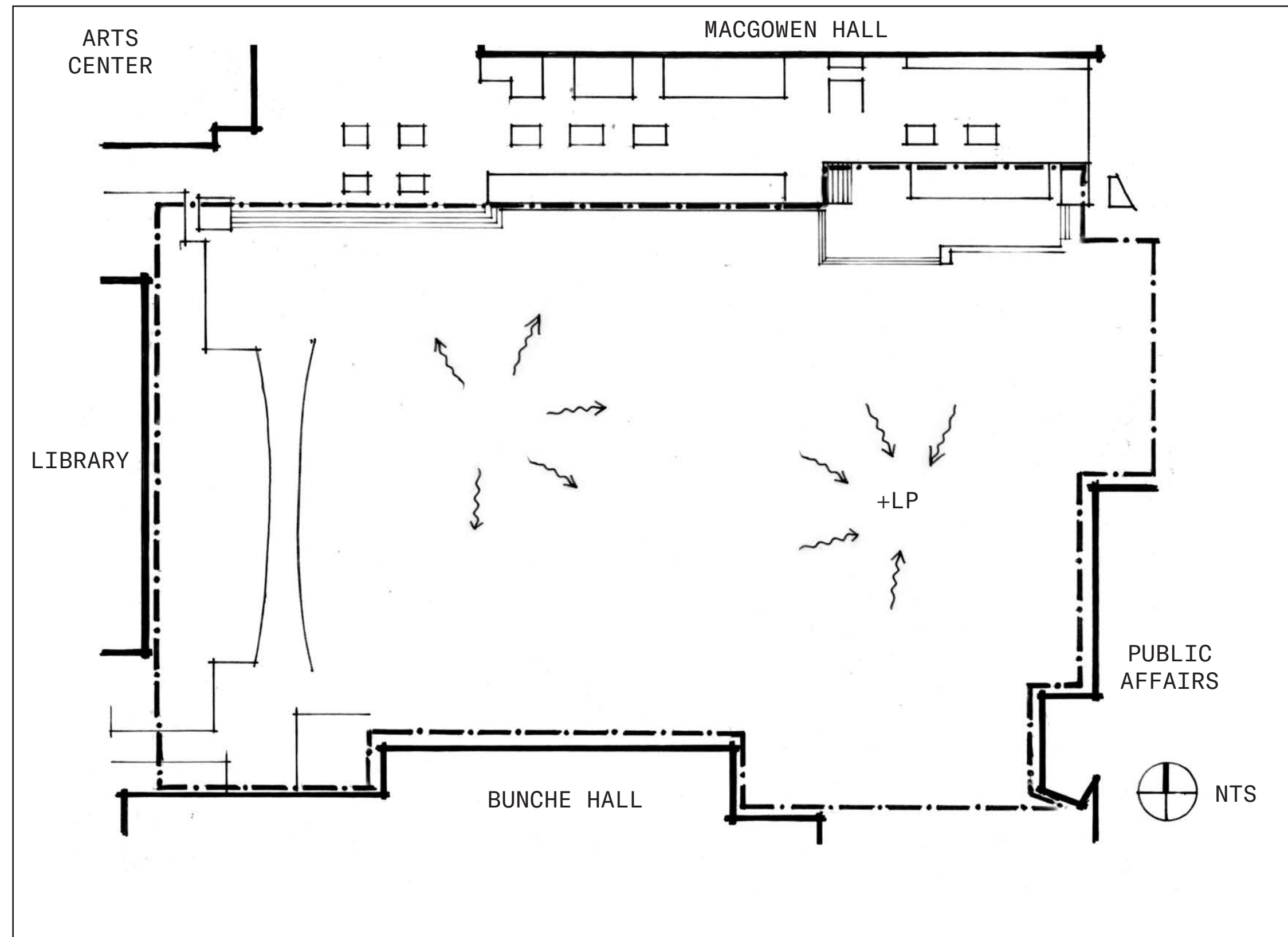
LANDSCAPE DESIGN 2

ARCH-X 471.1B

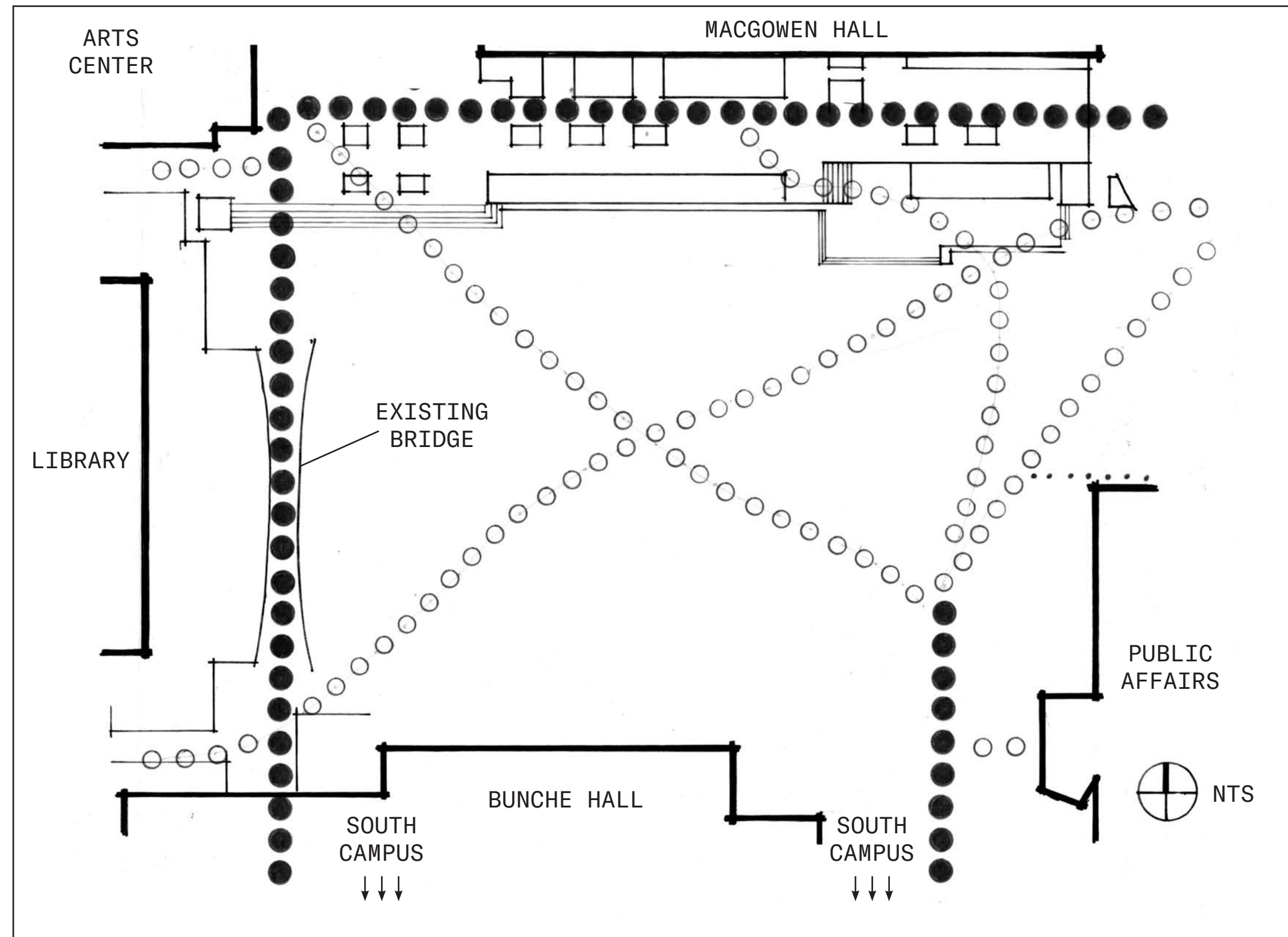
MURPHY SCULPTURE GARDEN REDEVELOPMENT

DESIGNER - BRENNAN GROH

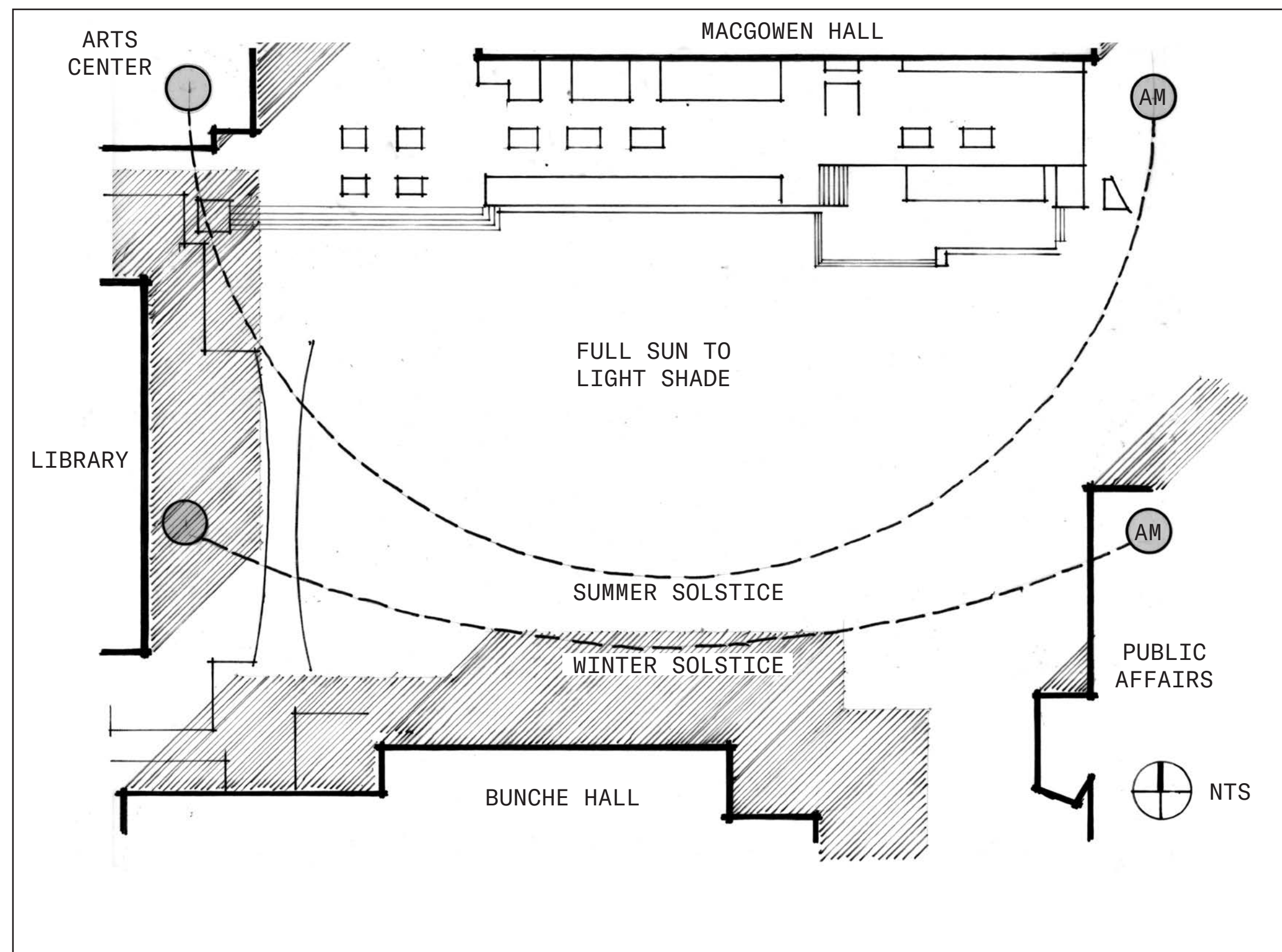
INSTRUCTOR - JIM SMITH



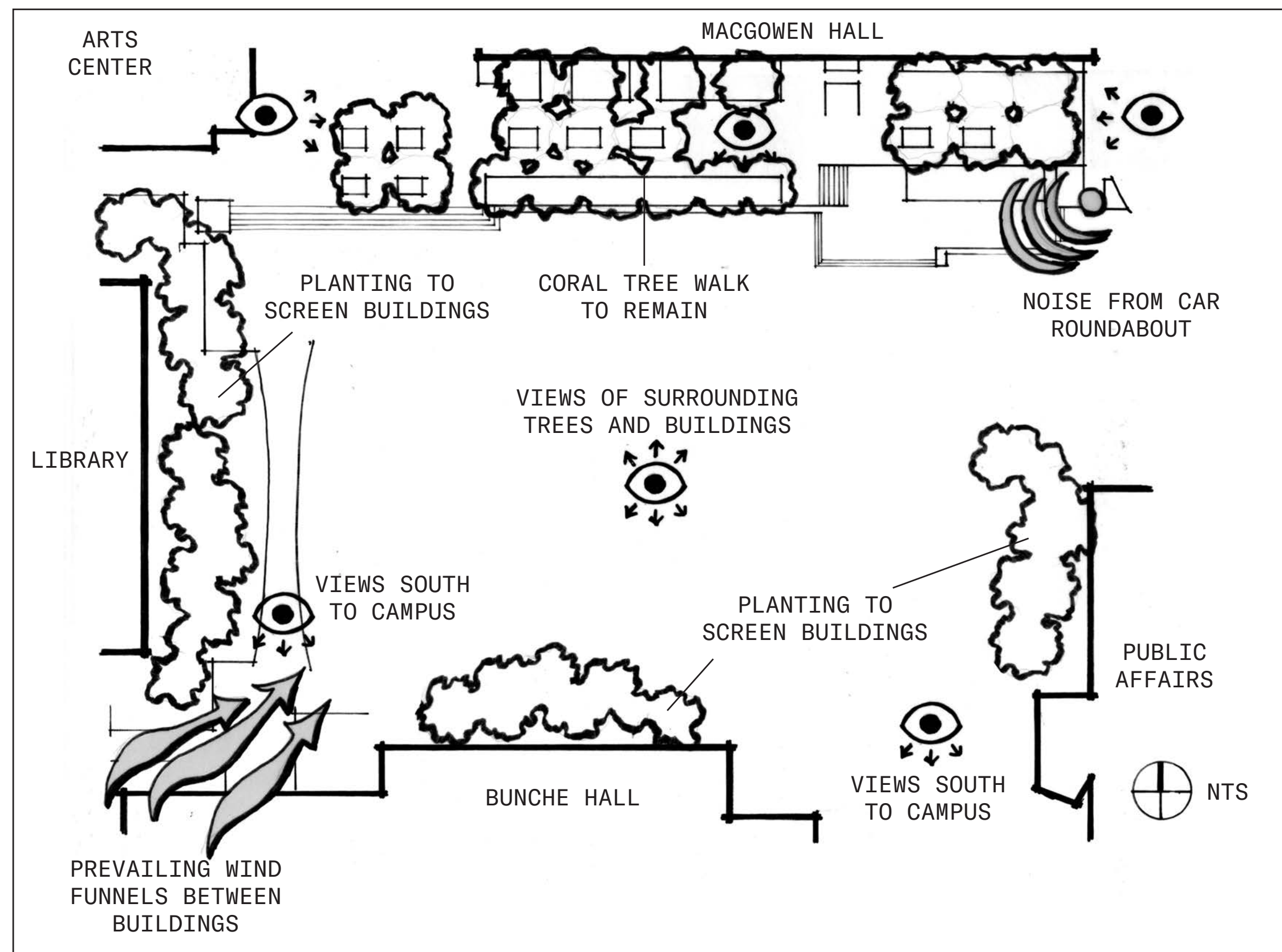
SITE CONDITIONS
 LIMIT OF WORK — — — — —
 DRAINAGE DIRECTION ~~~~>



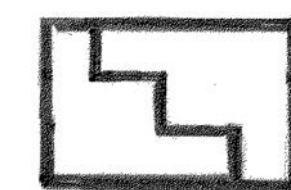
PEDESTRIAN CIRCULATION
 PRIMARY ●●●●●
 SECONDARY ○○○○○
 TERTIARY



SUN PATH AND SHADE

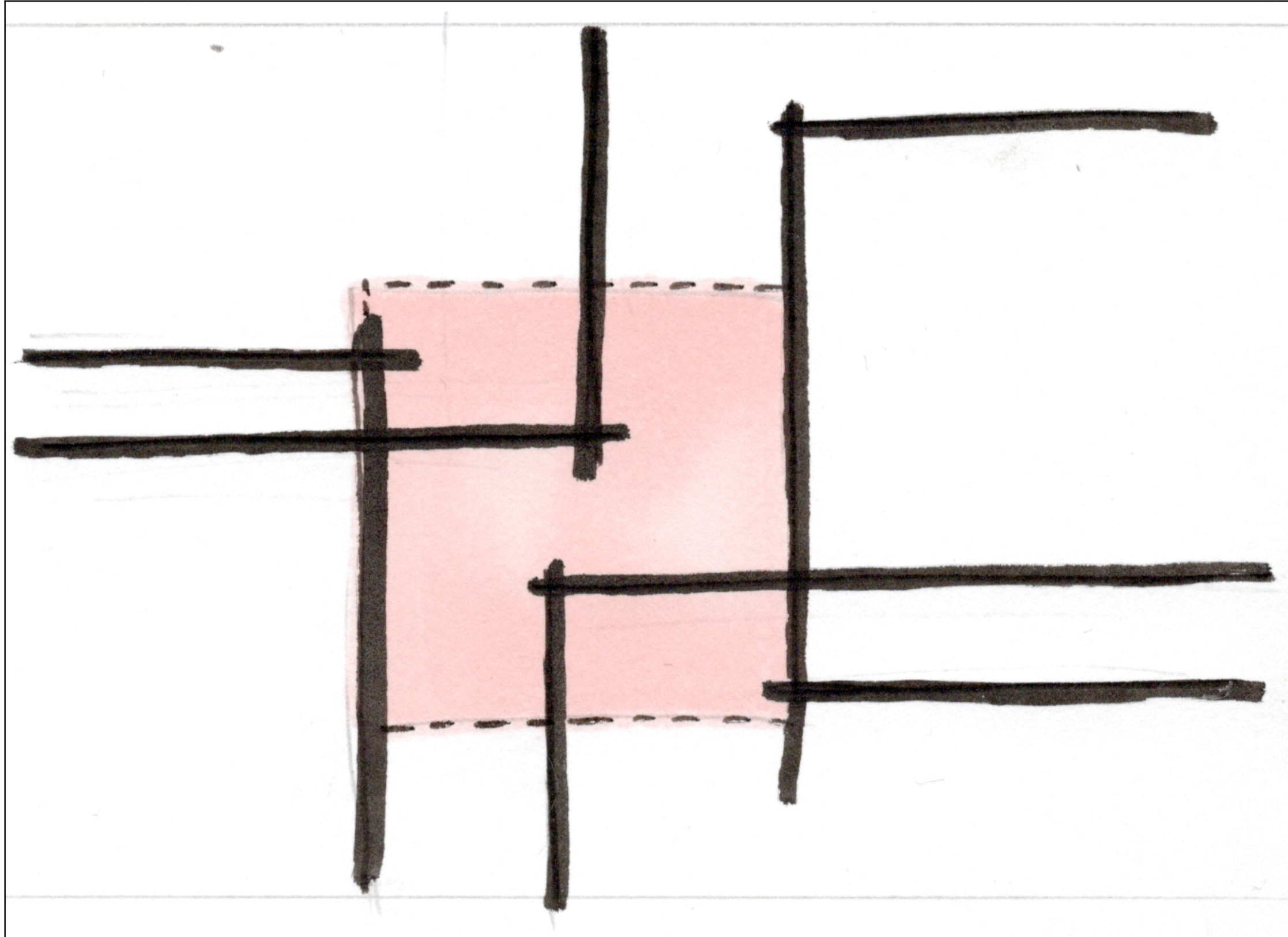


SITE EXPERIENCE

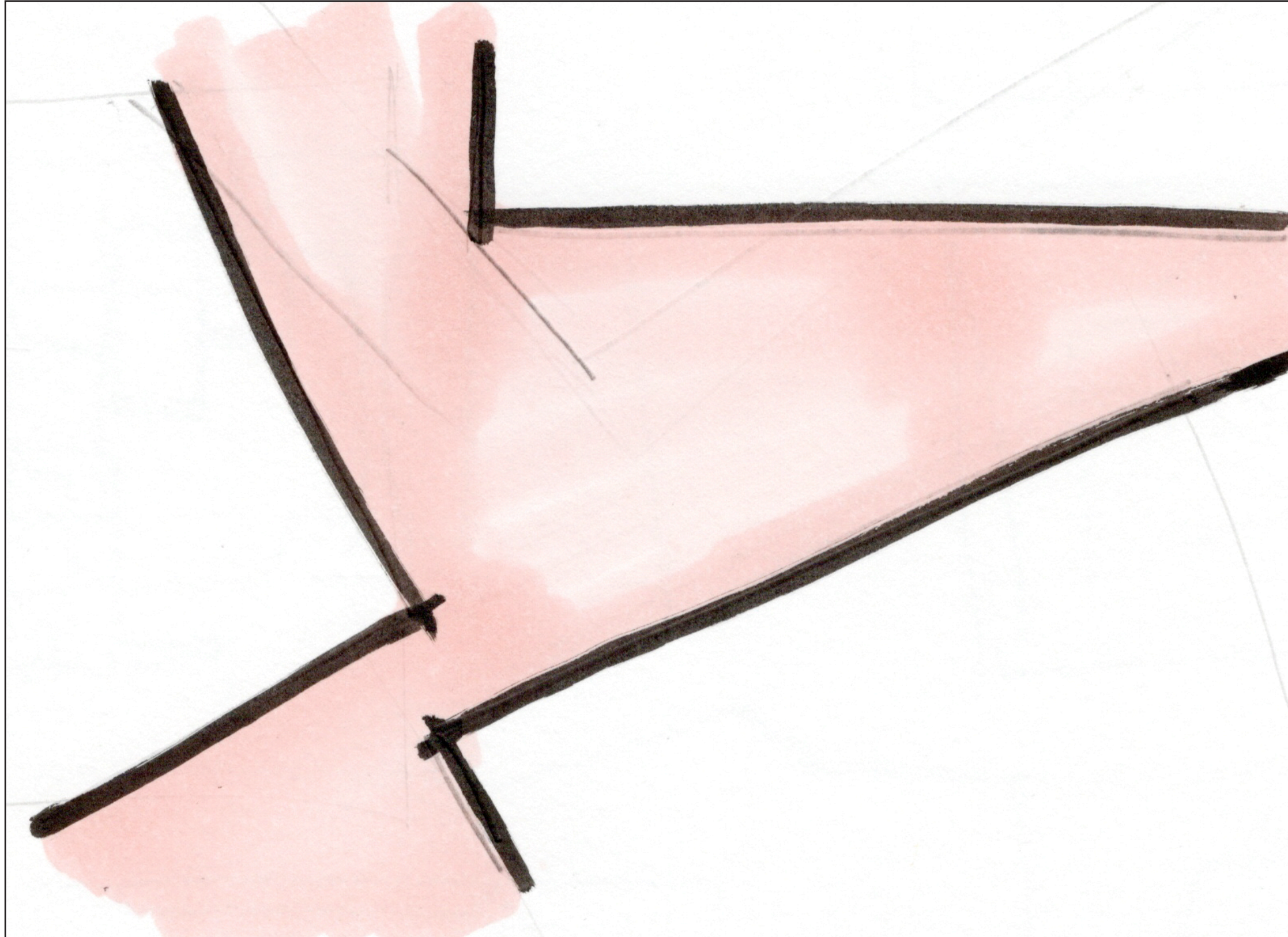


MURPHY SCULPTURE GARDEN SITE ANALYSIS

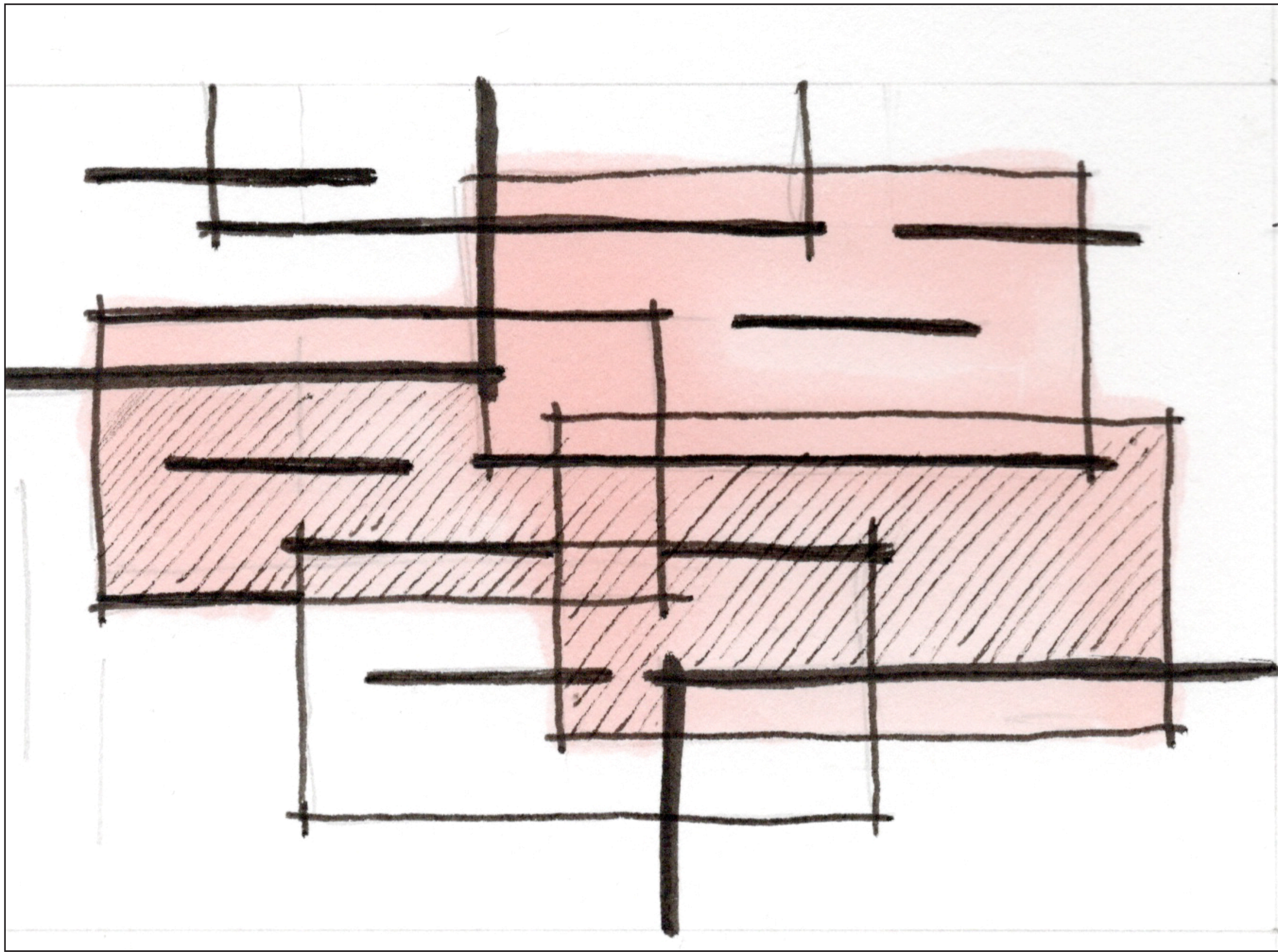
BRENNAN GROH
 LANDSCAPE DESIGN 2 - SPRING 2021



MEET

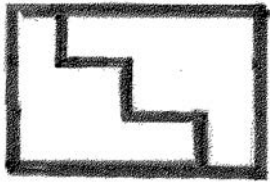


GATHER



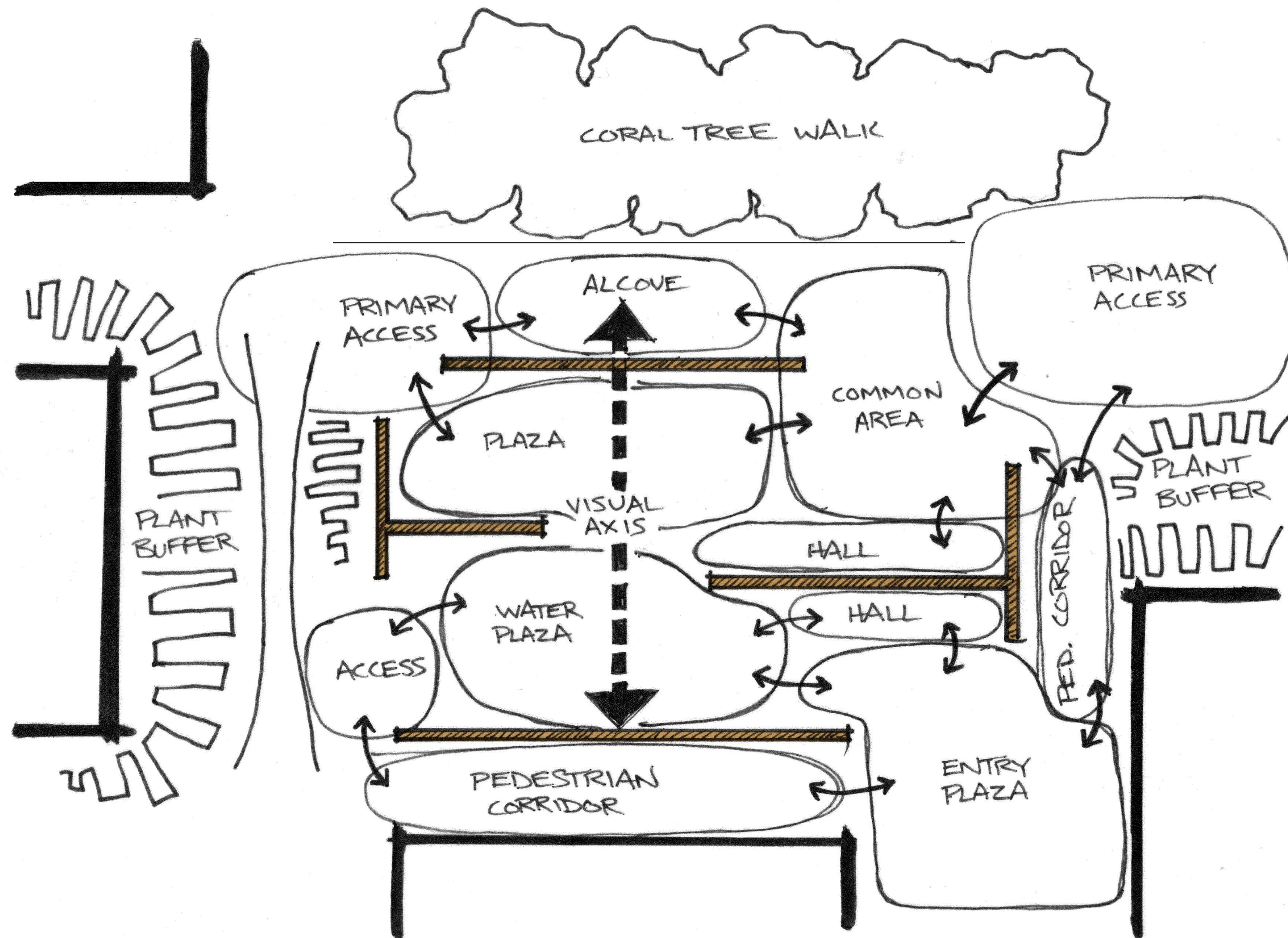
ASSEMBLE

A SPACE TO CONNECT
 The redeveloped Murphy Sculpture Garden will not only serve as a physical connective space for the UCLA north campus buildings but it will also bring together students, faculty, and guests to connect and interact with each other on a more intimate level as well as provide larger spaces for assembling at a larger scale.



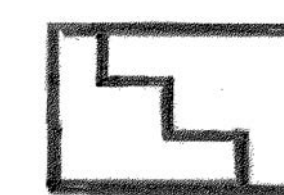
MURPHY SCULPTURE GARDEN CONCEPTS

BRENNAN GROH
 LANDSCAPE DESIGN 2 - SPRING 2021



A SPACE TO CONNECT

The redeveloped Murphy Sculpture Garden will not only serve as a physical connective space for the UCLA north campus buildings but it will also bring together students, faculty, and guests to connect and interact with each other on a more intimate level as well as provide larger spaces for assembling at a larger scale.

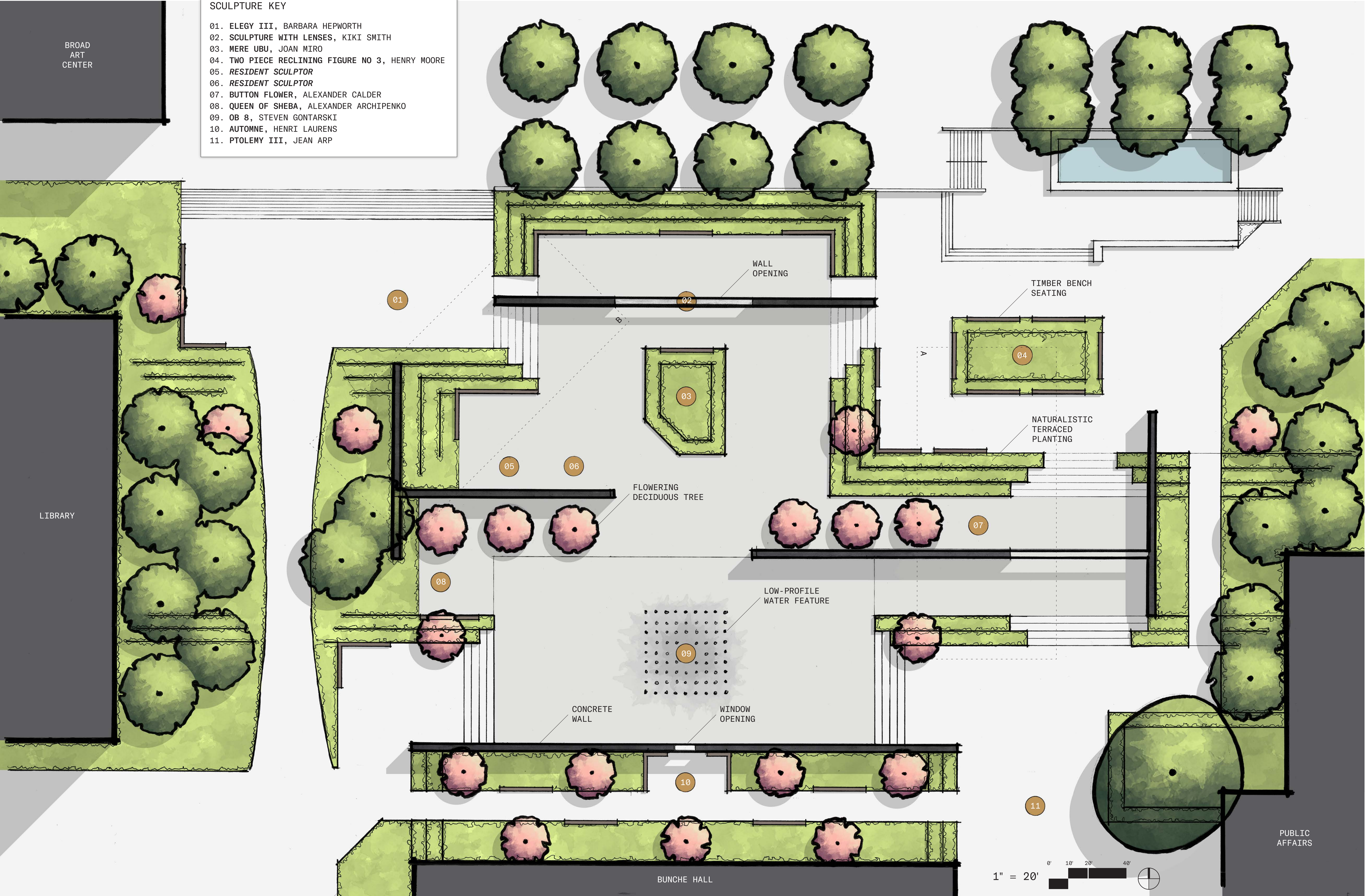


MURPHY SCULPTURE GARDEN FINAL CONCEPT

BRENNAN GROH
LANDSCAPE DESIGN 2 - SPRING 2021

SCULPTURE KEY

- 01. ELEGY III, BARBARA HEPWORTH
- 02. SCULPTURE WITH LENSES, KIKI SMITH
- 03. MERE UBU, JOAN MIRO
- 04. TWO PIECE RECLINING FIGURE NO 3, HENRY MOORE
- 05. *RESIDENT SCULPTOR*
- 06. *RESIDENT SCULPTOR*
- 07. BUTTON FLOWER, ALEXANDER CALDER
- 08. QUEEN OF SHEBA, ALEXANDER ARCHIPENKO
- 09. OB 8, STEVEN GONTARSKI
- 10. AUTOMNE, HENRI LAURENS
- 11. PTOLEMY III, JEAN ARP





**TWO PIECE RECLINING
FIGURE NO. 3
1961**
-
HENRY MOORE
Bronze



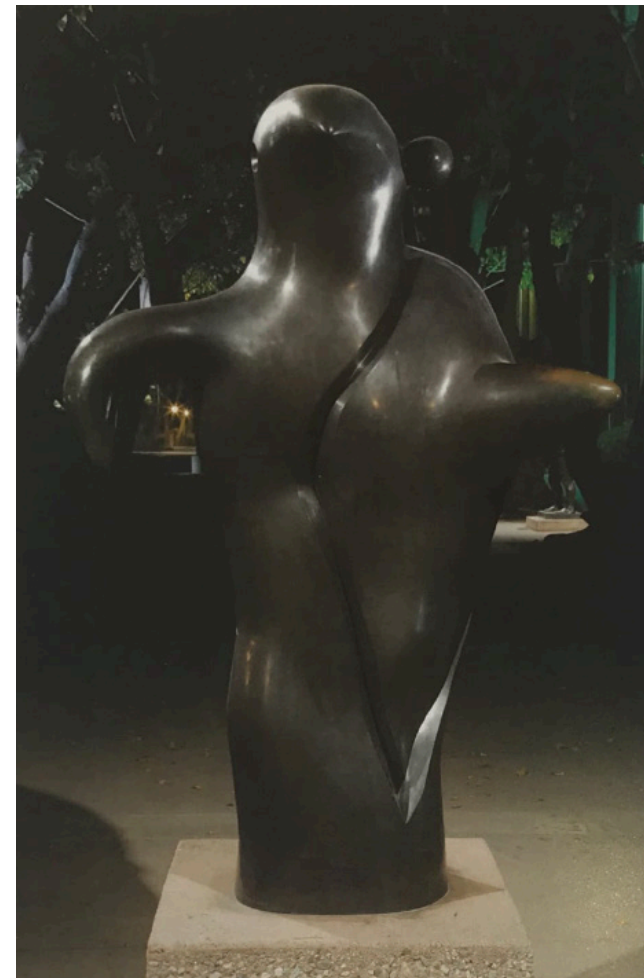
**BUTTON FLOWER
1959**
-
ALEXANDER CALDER
Sheet metal, bolted
together for easier
transport



**ELEGY III
1966**
-
BARBARA HEPWORTH
Bronze on plinth



**OUTDOOR SCULPTURE WITH LENSES
YEAR UNKNOWN**
-
KIKI SMITH
Wood with lenses



**MERE UBU
1975**
-
JOAN MIRO
Bronze on plinth



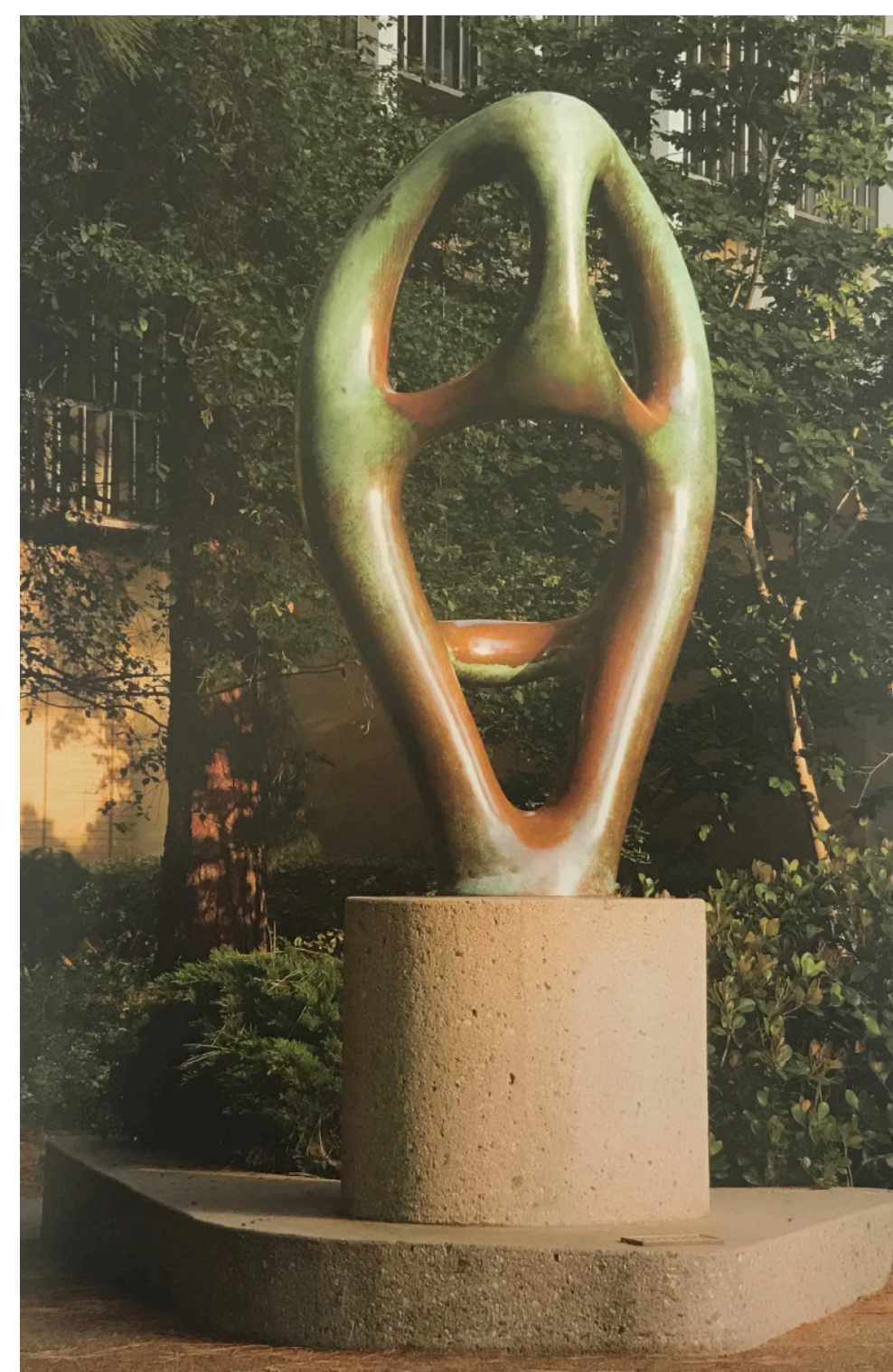
**AUTOMNE
1948**
-
HENRI LAURENS
Bronze on plinth



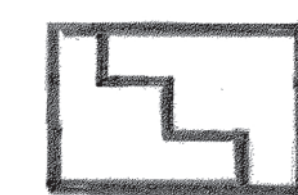
**OB. 8
2008**
-
STEVEN GONTARSKI
Painted and lacquered
glass-fibre-reinforced
plastic



**QUEEN OF SHEBA
1961**
-
ALEXANDER
ARCHIPENKO
Bronze on plinth



**PTOLEMY III
1961**
-
JEAN ARP
Bronze on plinth

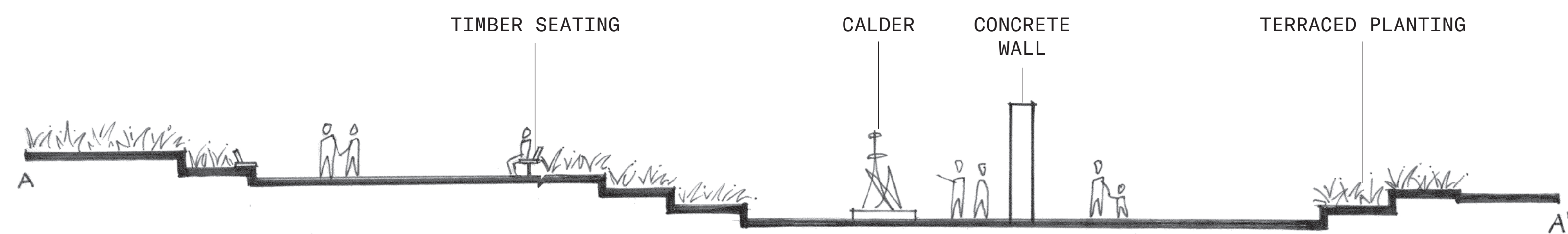
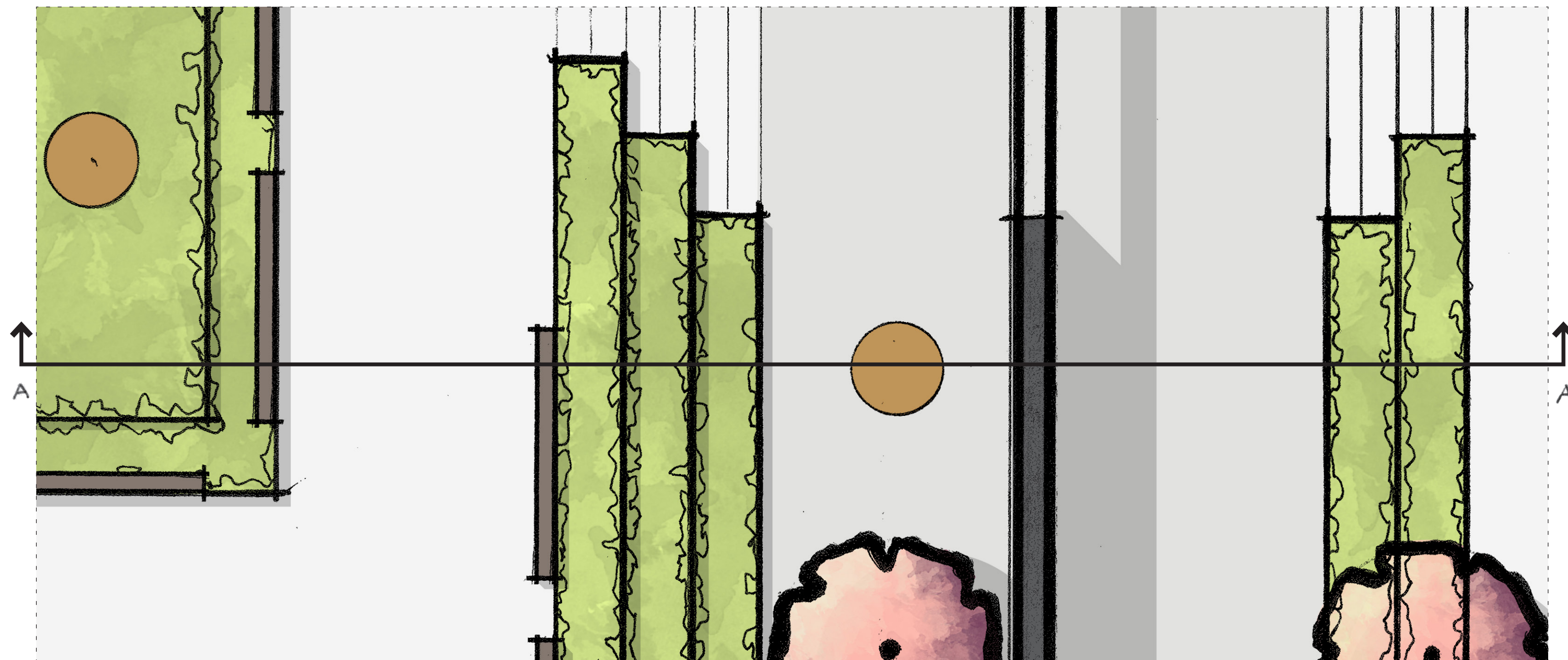


MURPHY SCULPTURE GARDEN SCULPTURE ANALYSIS

BRENNAN GROH
LANDSCAPE DESIGN 2 - SPRING 2021

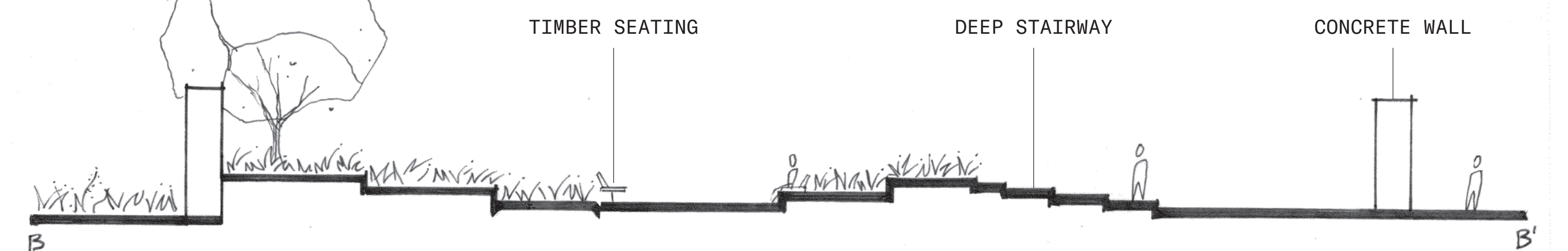
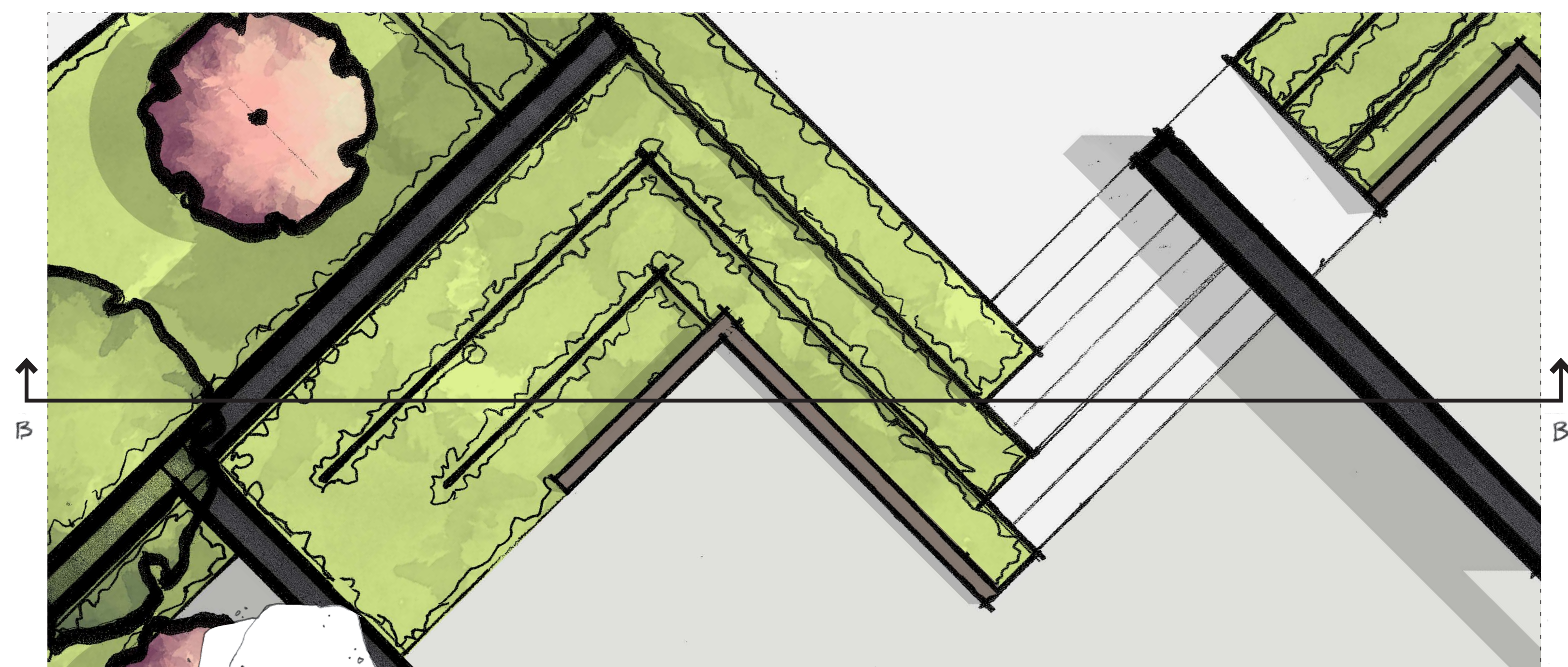
The sculptures chosen from the existing collection at Murphy Sculpture Garden are all tied together through amorphous, organic forms that are recognizable but not necessarily identifiable, appearing different from varying angles.

The two additions are more recent works that follow a similar abstraction. Additionally, both encourage interaction and a more democratic experience with the art.



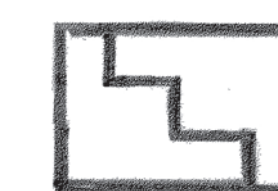
1" = 10'

0' 5' 10' 20'



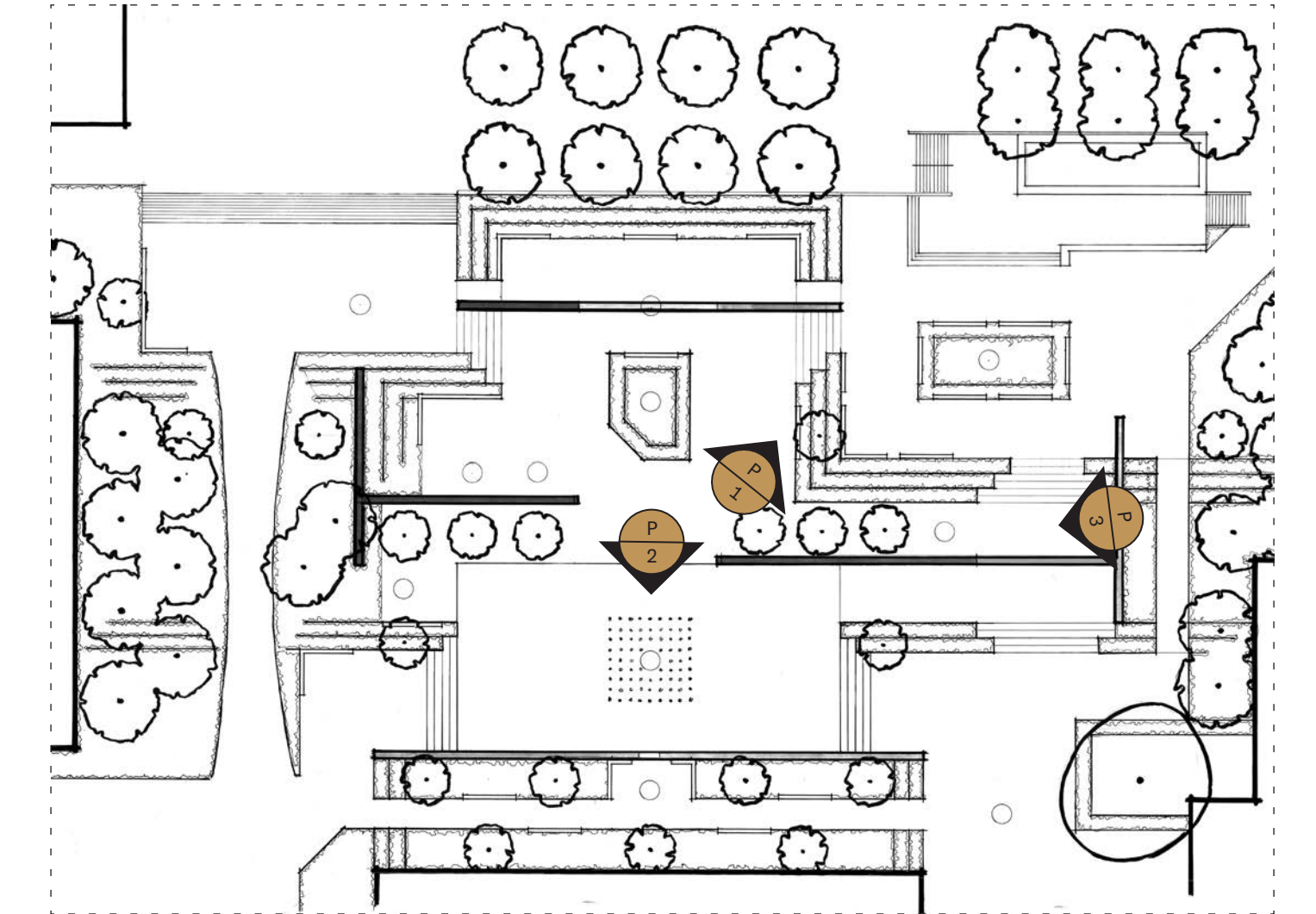
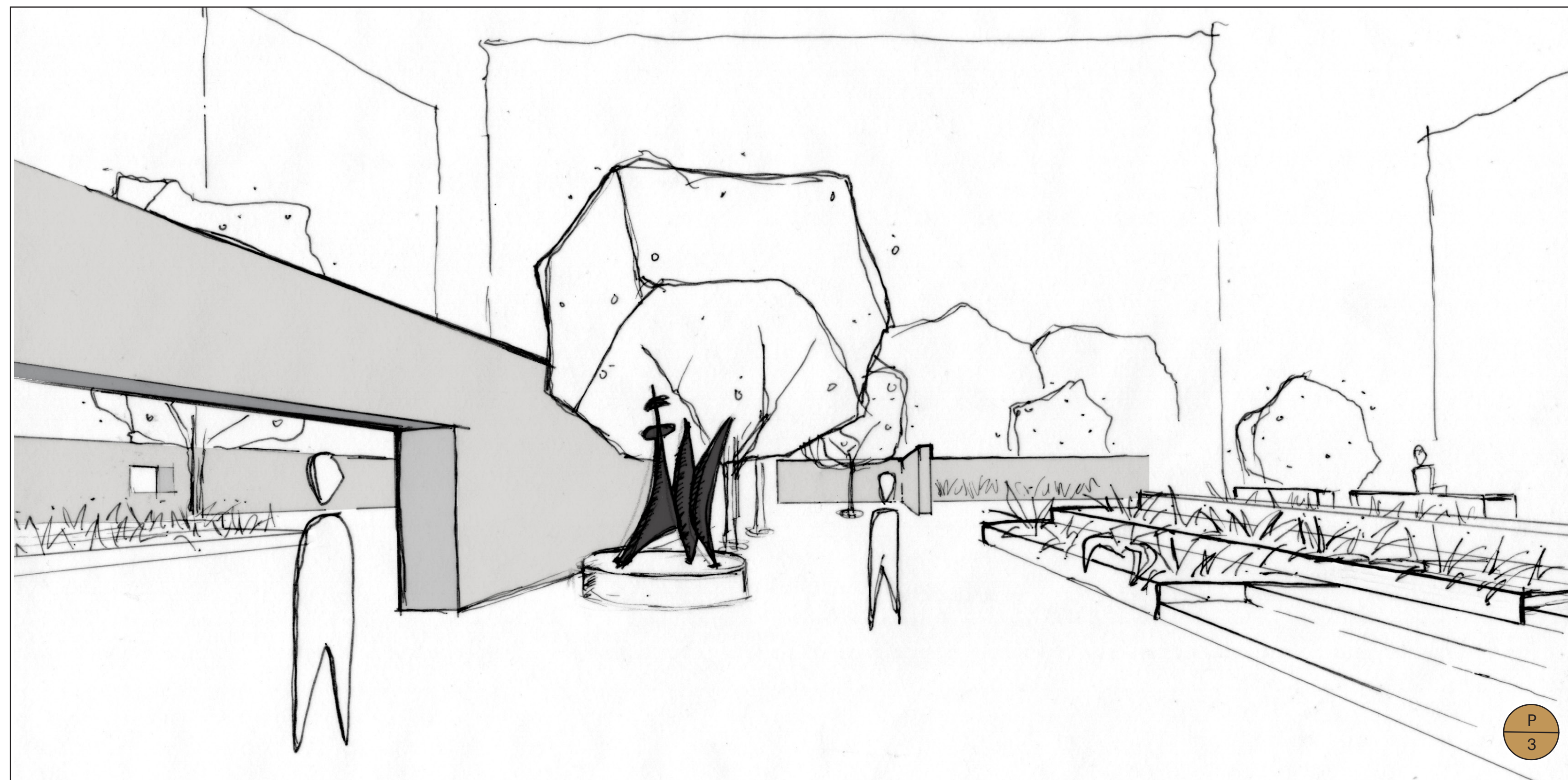
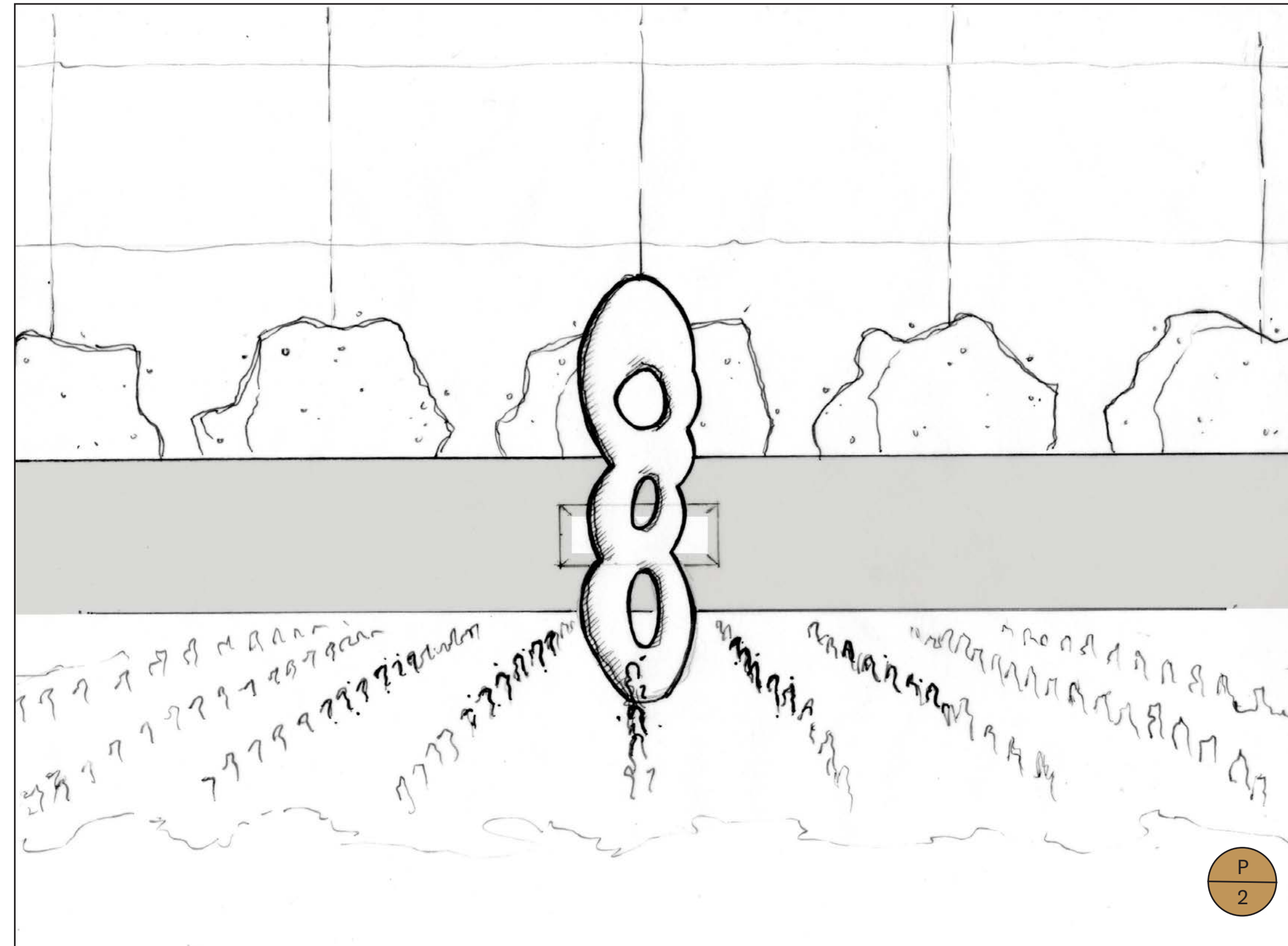
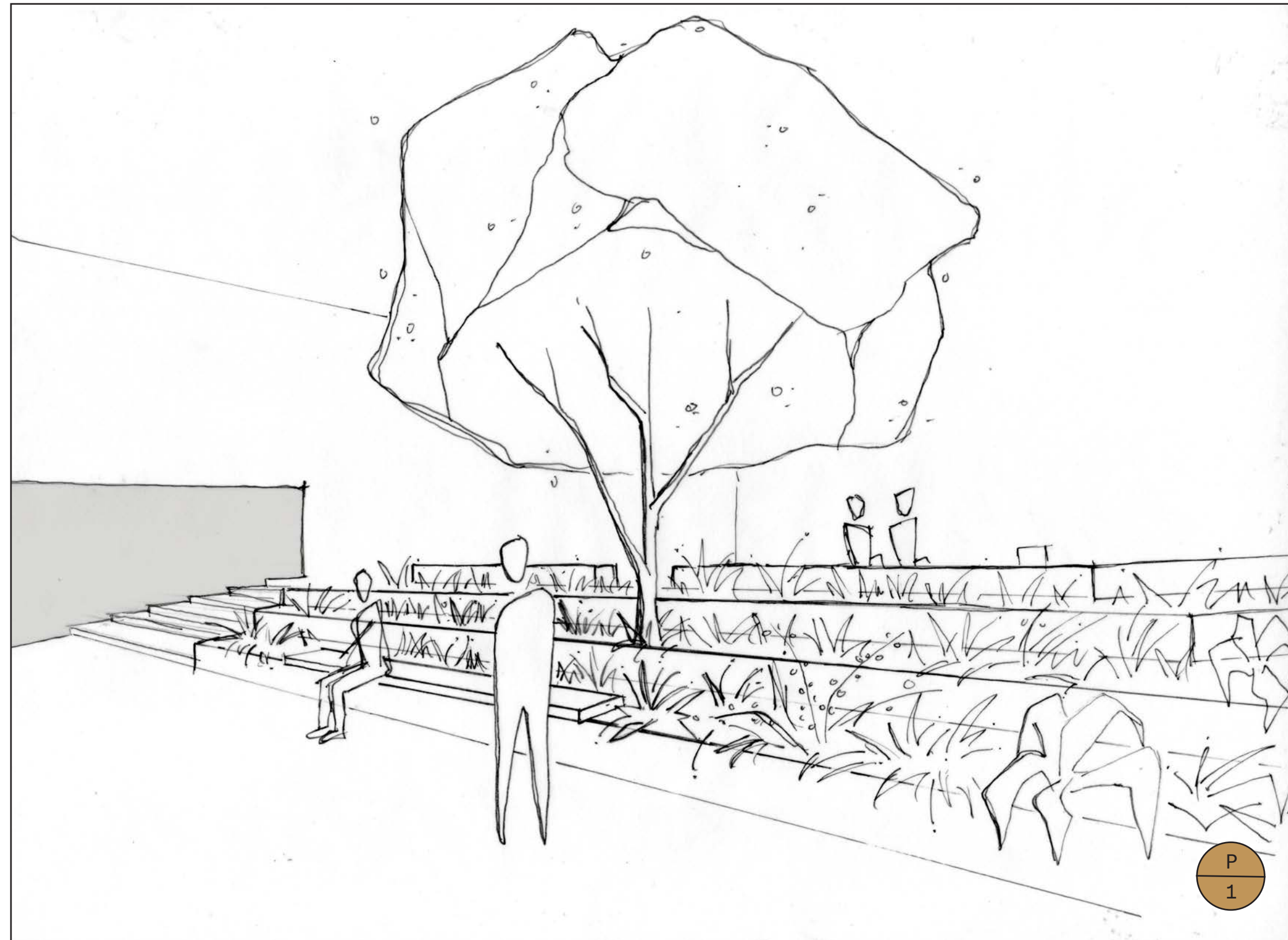
1" = 10'

0' 5' 10' 20'

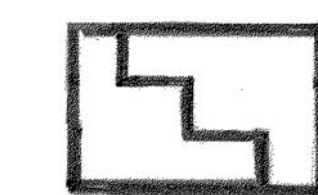


MURPHY SCULPTURE GARDEN SECTION-ELEVATIONS

BRENNAN GROH
LANDSCAPE DESIGN 2 - SPRING 2021



KEY MAP - NTS



MURPHY SCULPTURE GARDEN PERSPECTIVE SKETCHES

BRENNAN GROH
LANDSCAPE DESIGN 2 - SPRING 2021