

MELNITZ STAIRS RE-DEVELOPMENT

DESIGN GOALS

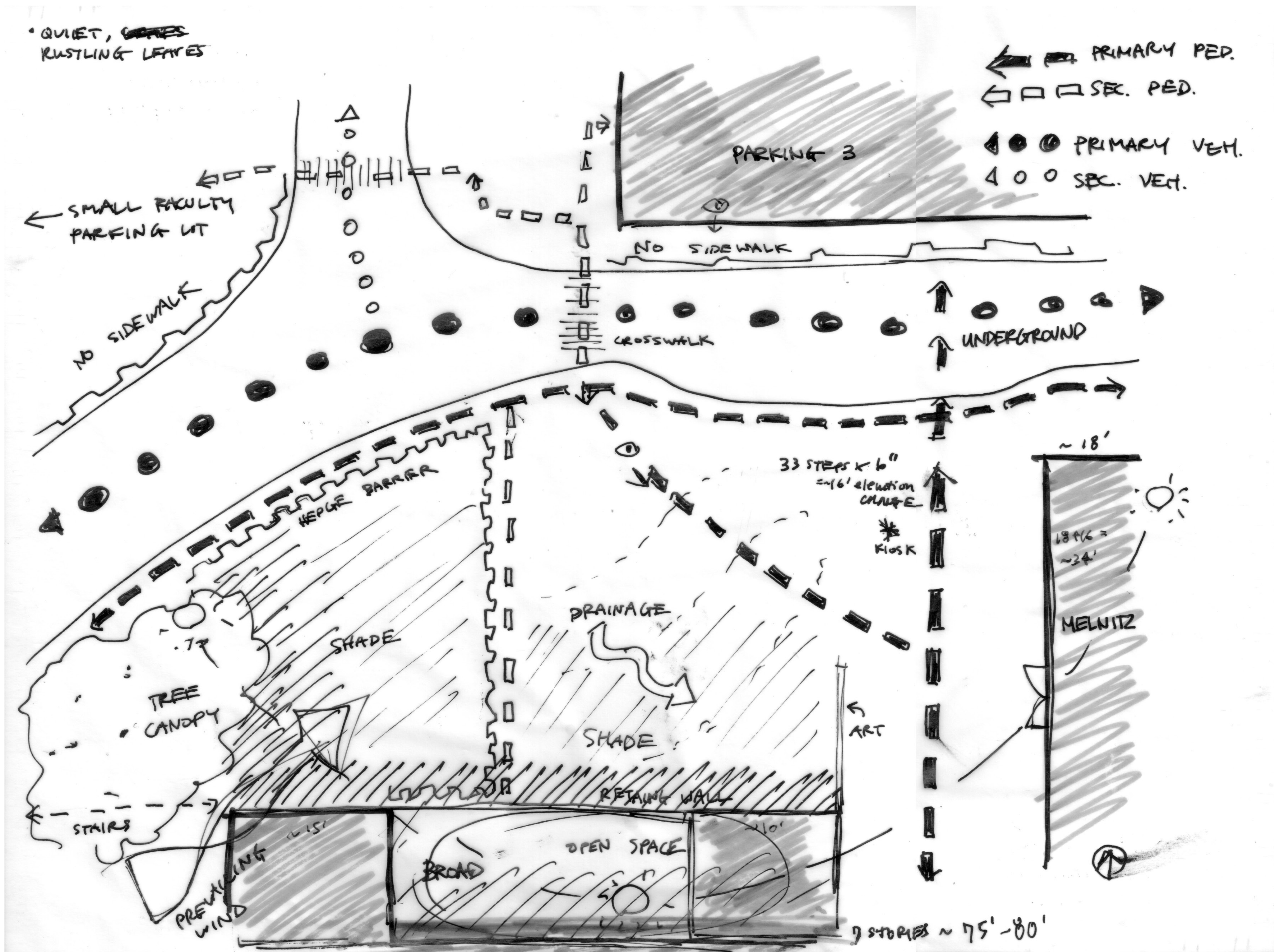
Integrate the stairway into a functional, multi-purpose space

Anchor the site into its surrounding context

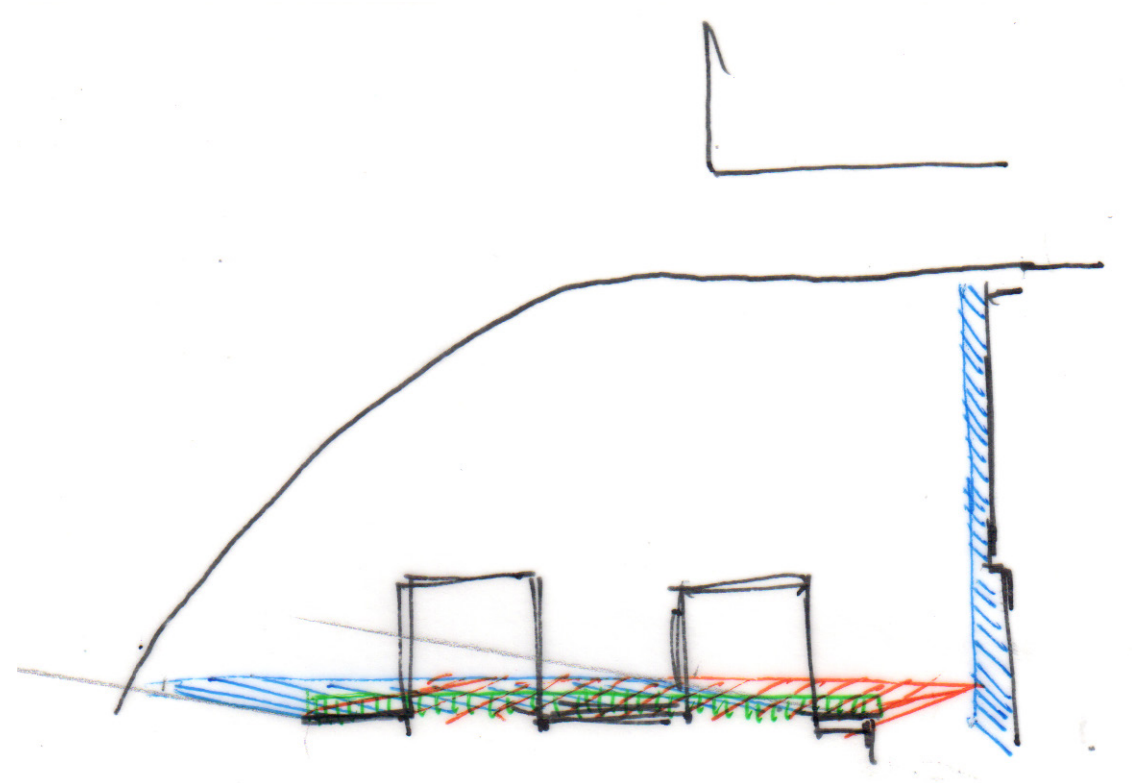
Provide a variety of unique experiences and opportunities for visitors

INTRODUCTION	
DRAWN BY: JACQUELINE WEE	
DATE: 03.17.21	SCALE: NTS
LD II - JIM SMITH	SHEET NO.: 1 / 8

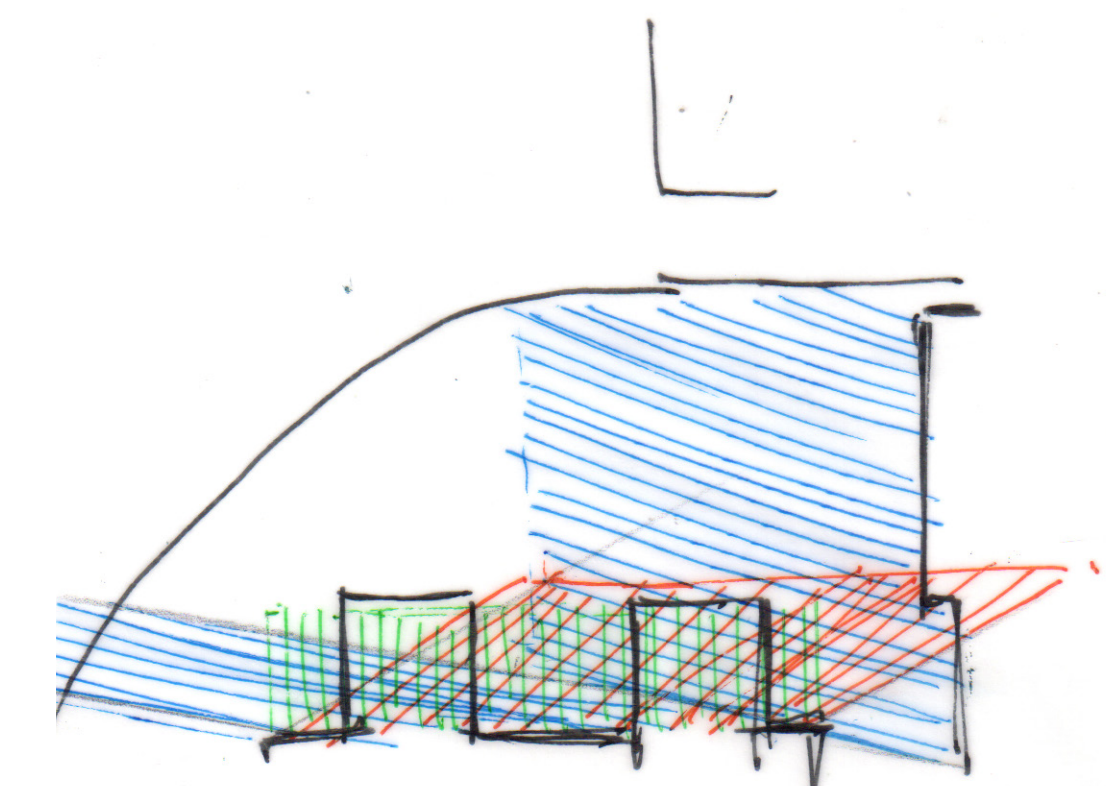
WEST - EAST SECTION ELEVATION



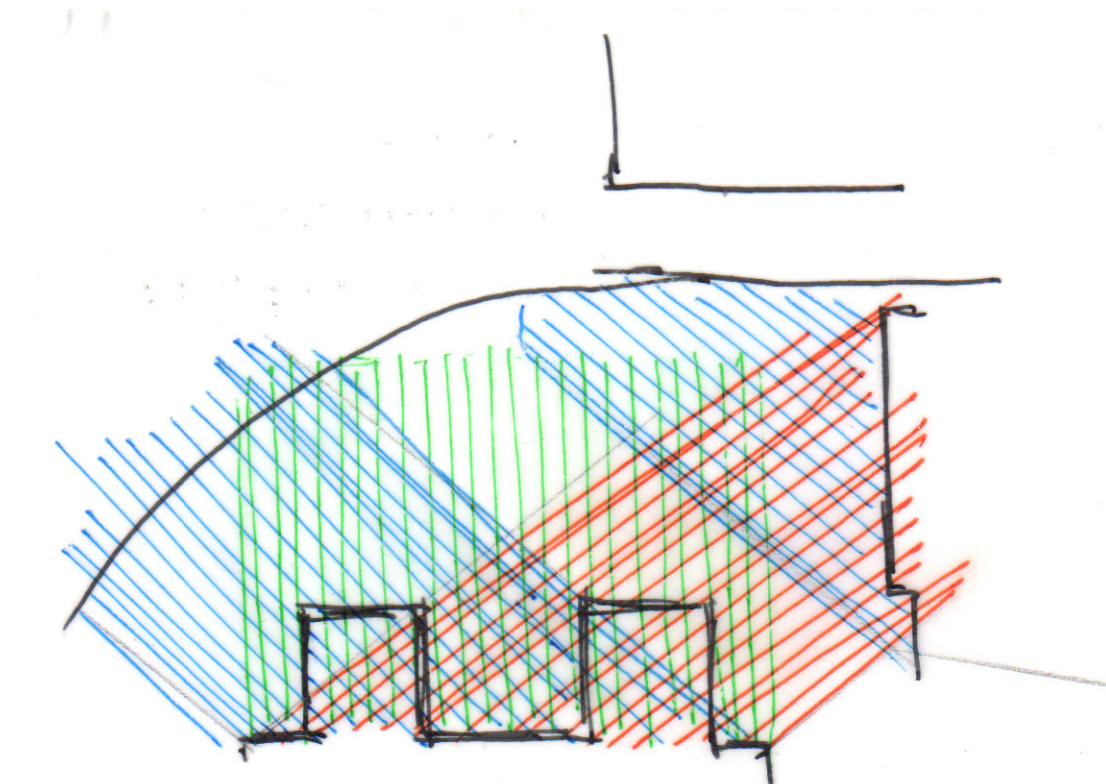
- ← PRIMARY PED.
- ◻◻◻ SEC. PED.
- PRIMARY VEH.
- ◻◻◻ SEC. VEH.



SUMMER SHADE



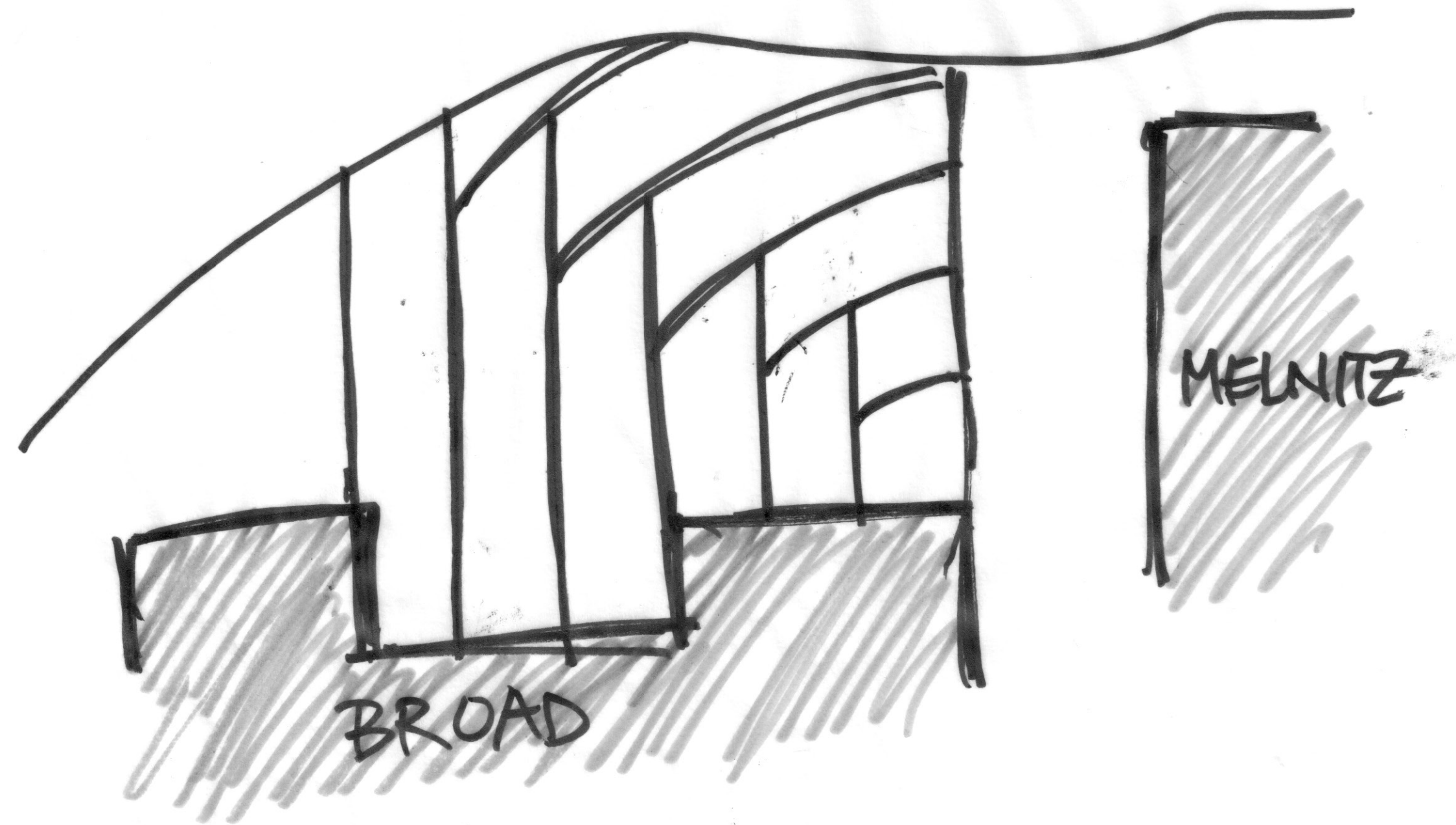
SPRING/FALL SHADE



WINTER SHADE

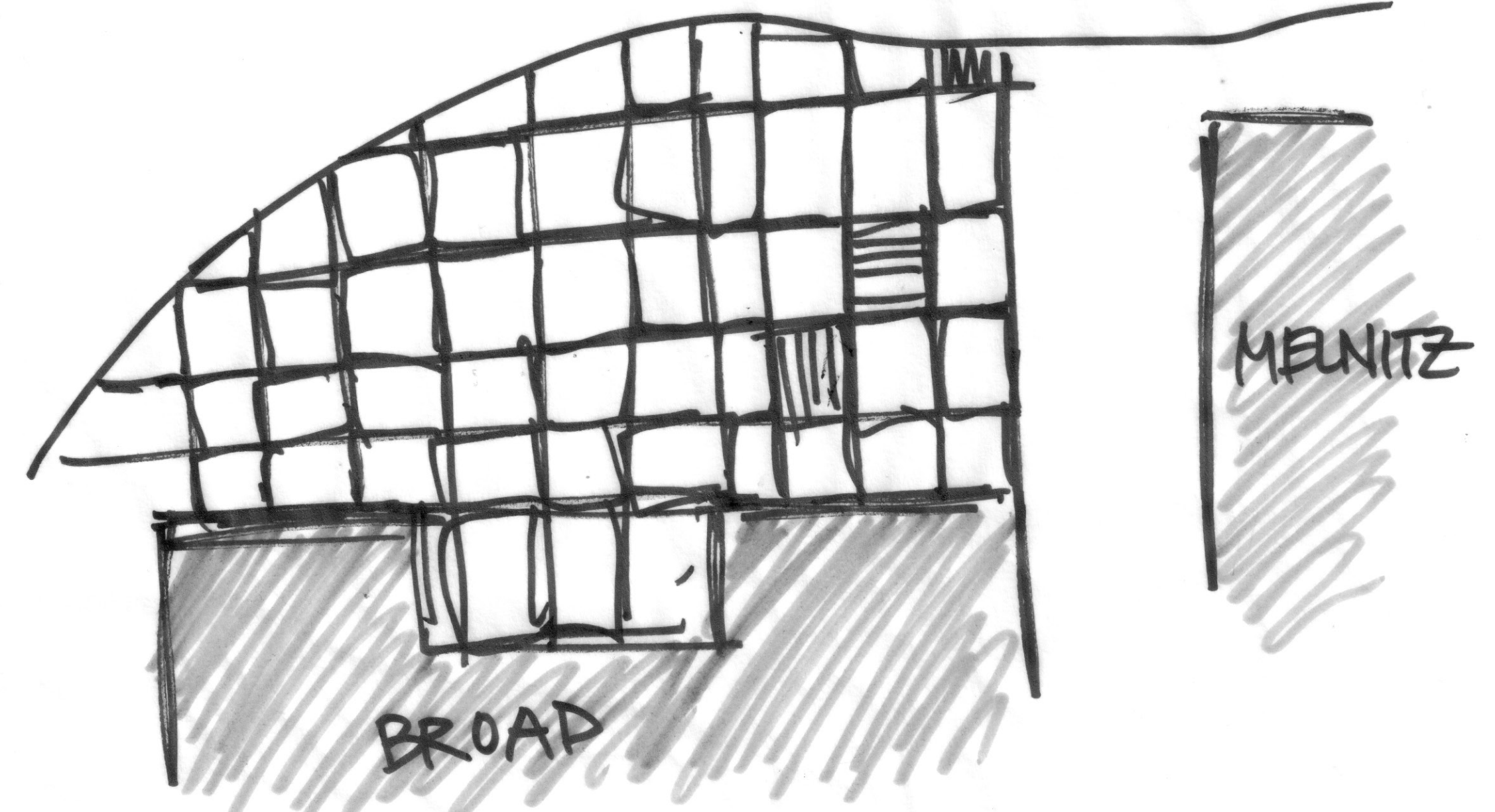
MELNITZ SITE ANALYSIS	
DRAWN BY: JACQUELINE WEE	
DATE: 03.17.21	SCALE: NTS
LD II - JIM SMITH	SHEET NO.: 2 / 8

PARKING 3

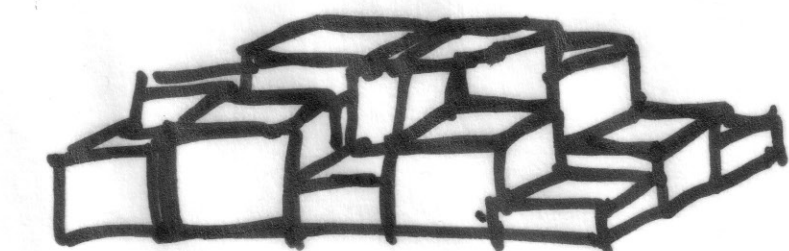


CONCEPT #1
"WOVEN"

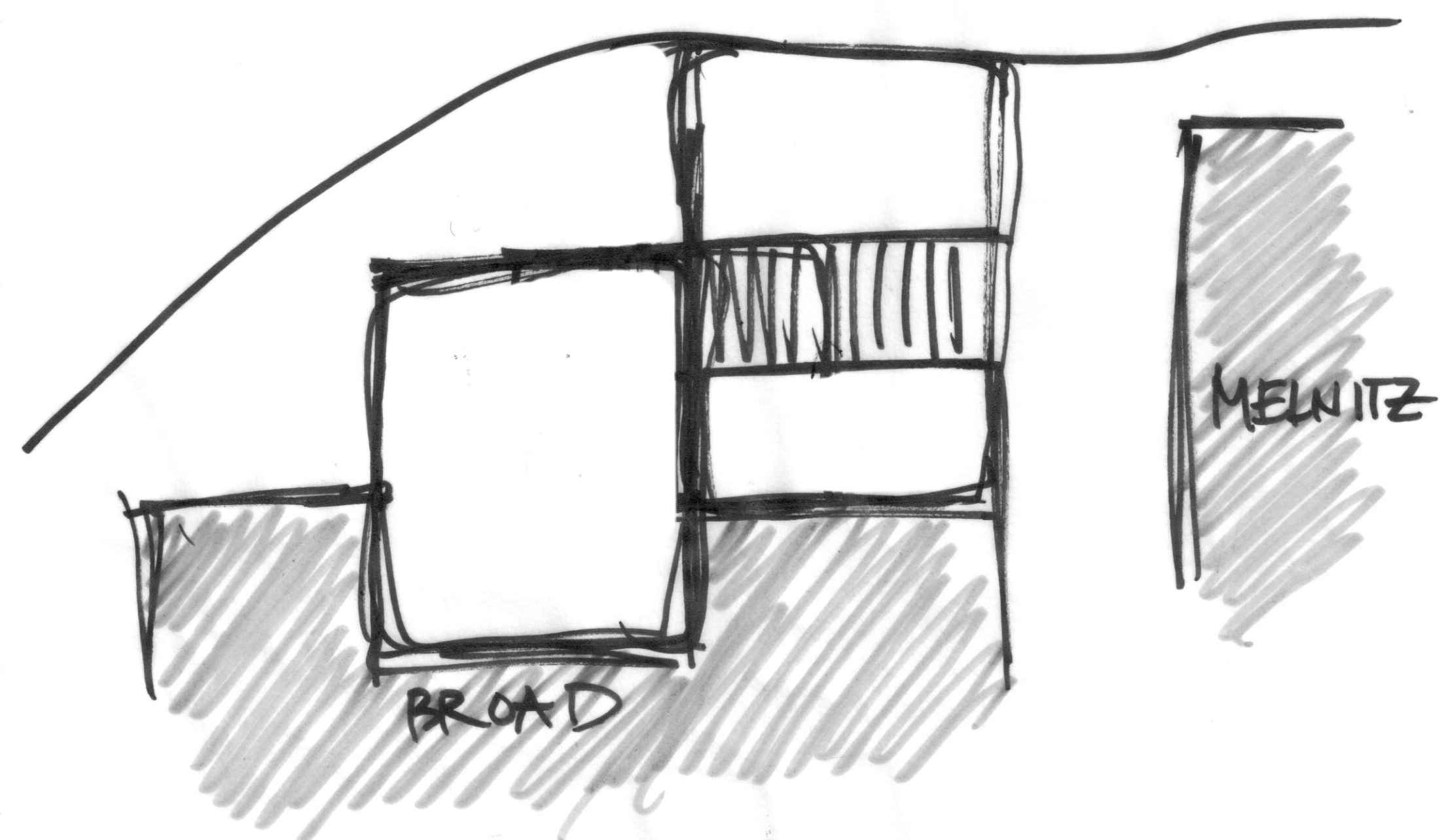
PARKING 3



CONCEPT #2
"BLOCKS"

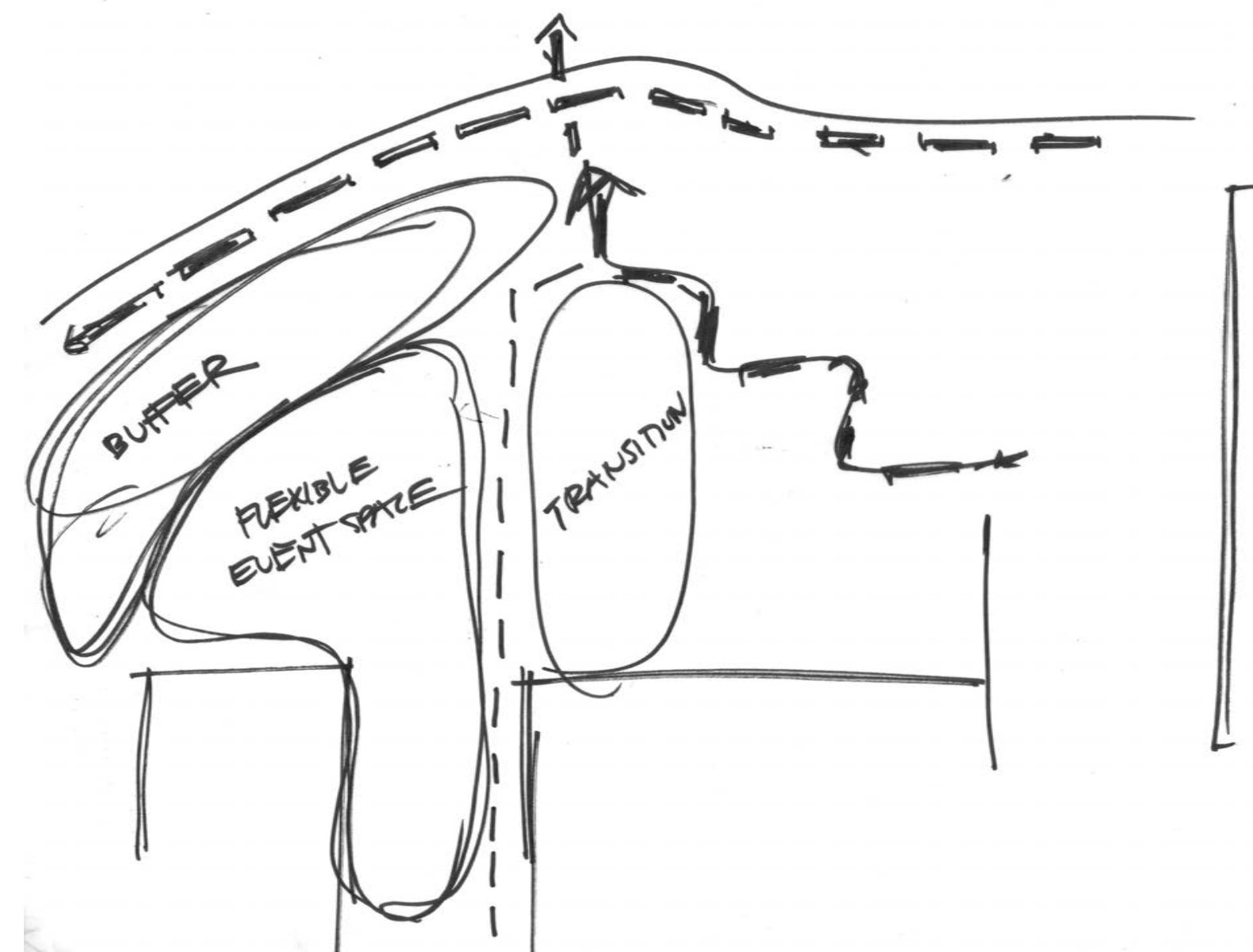
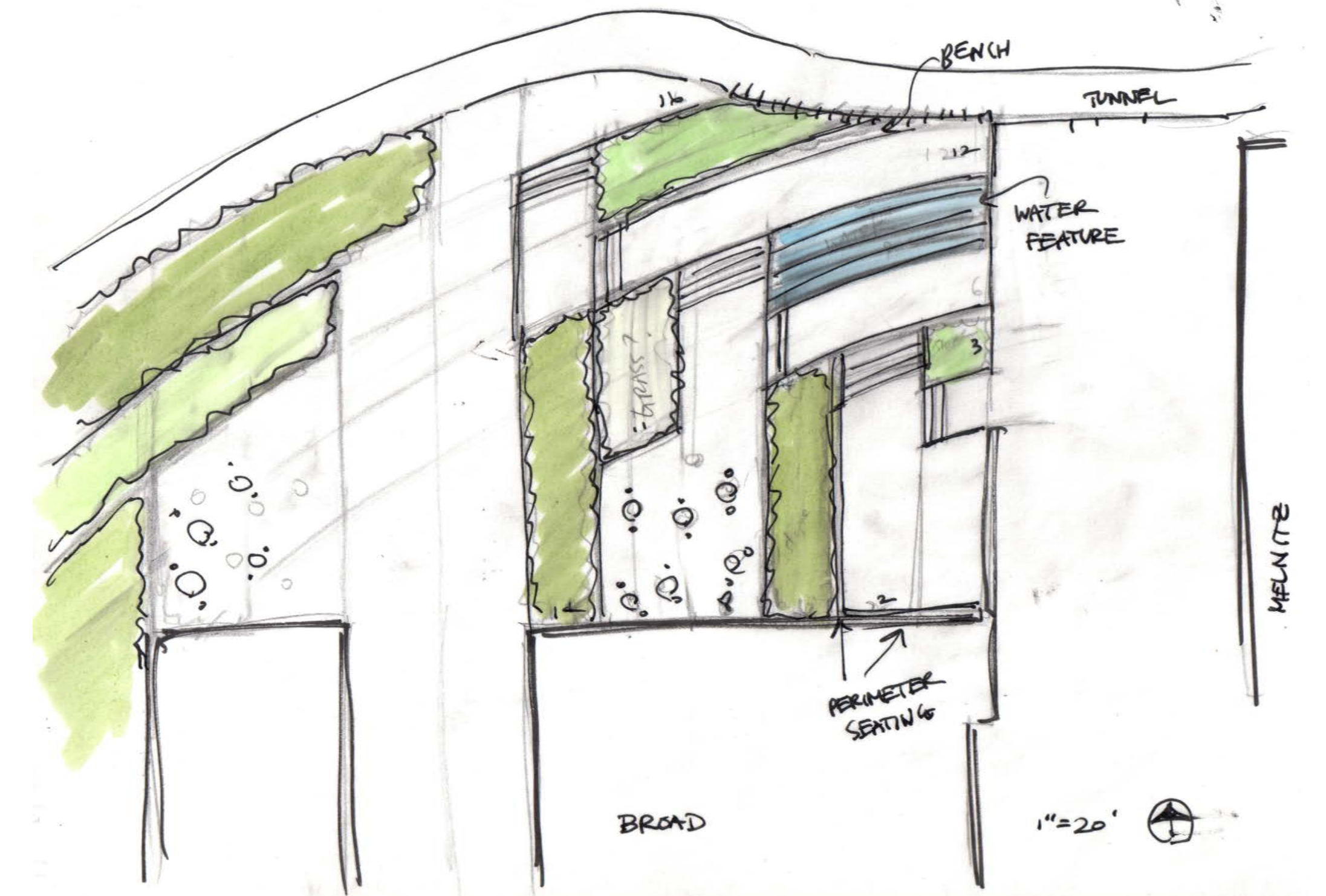
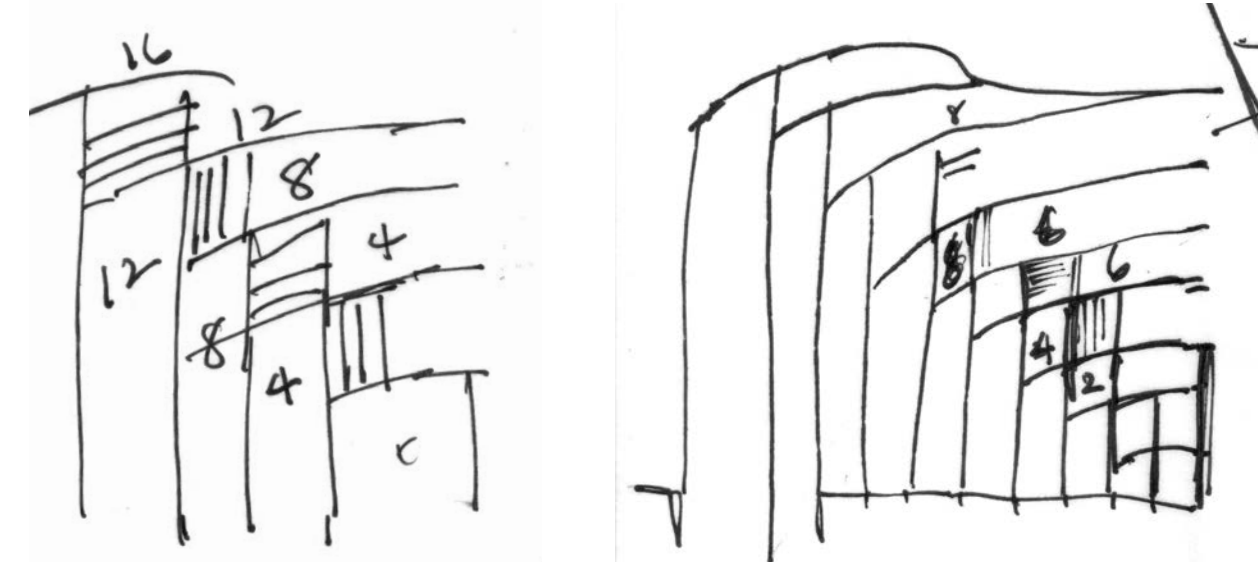
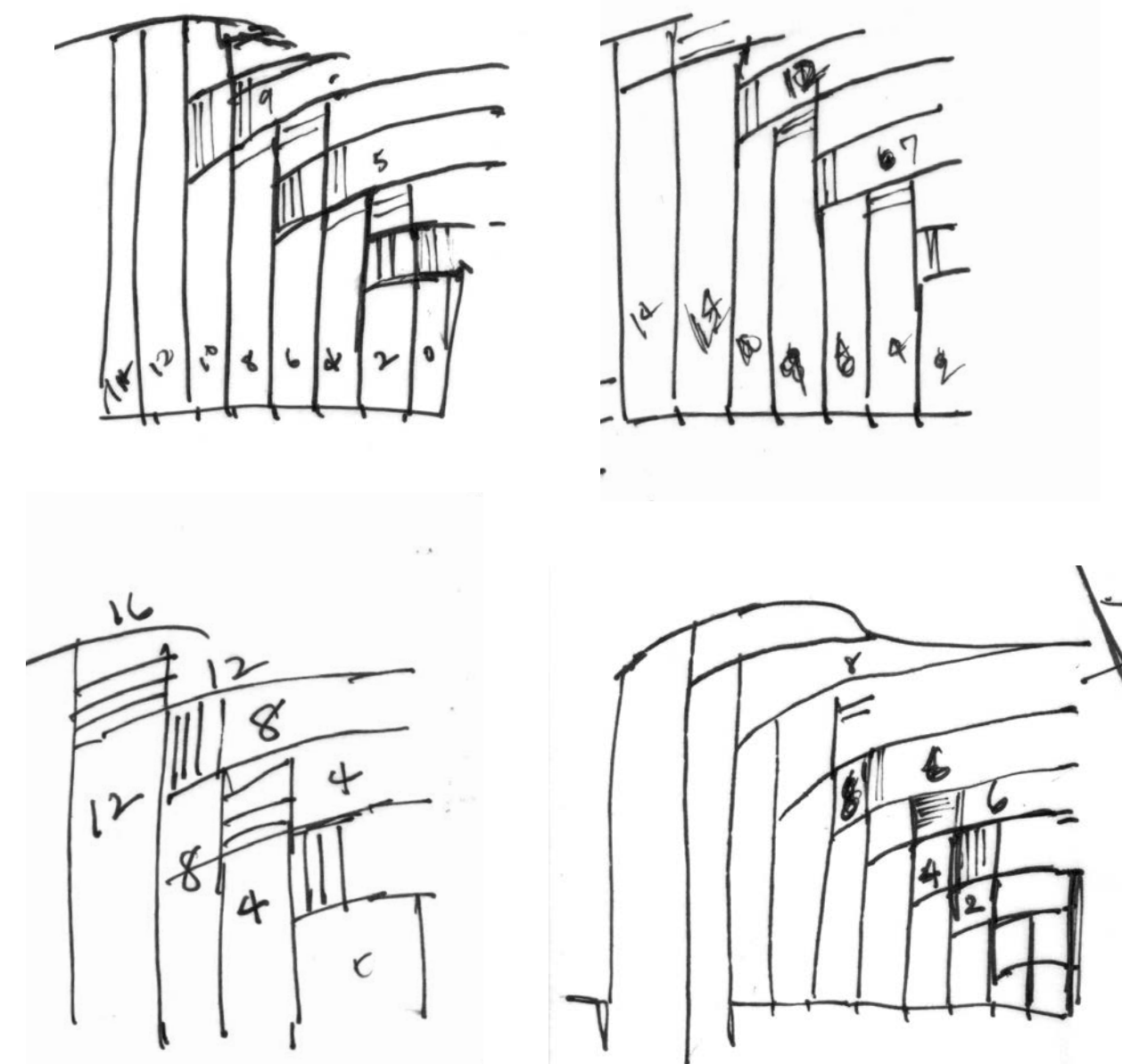
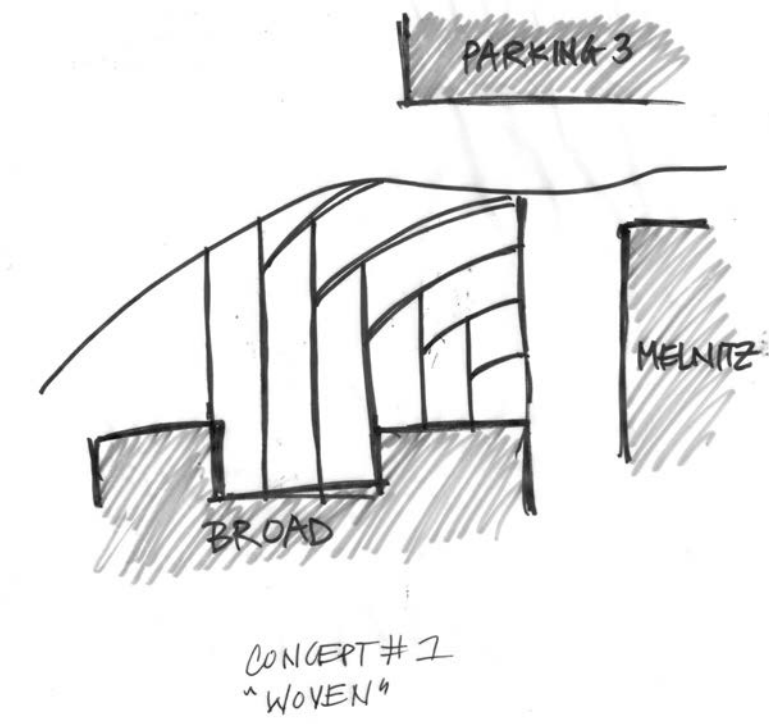


PARKING 3



CONCEPT #3
"OFFSET"

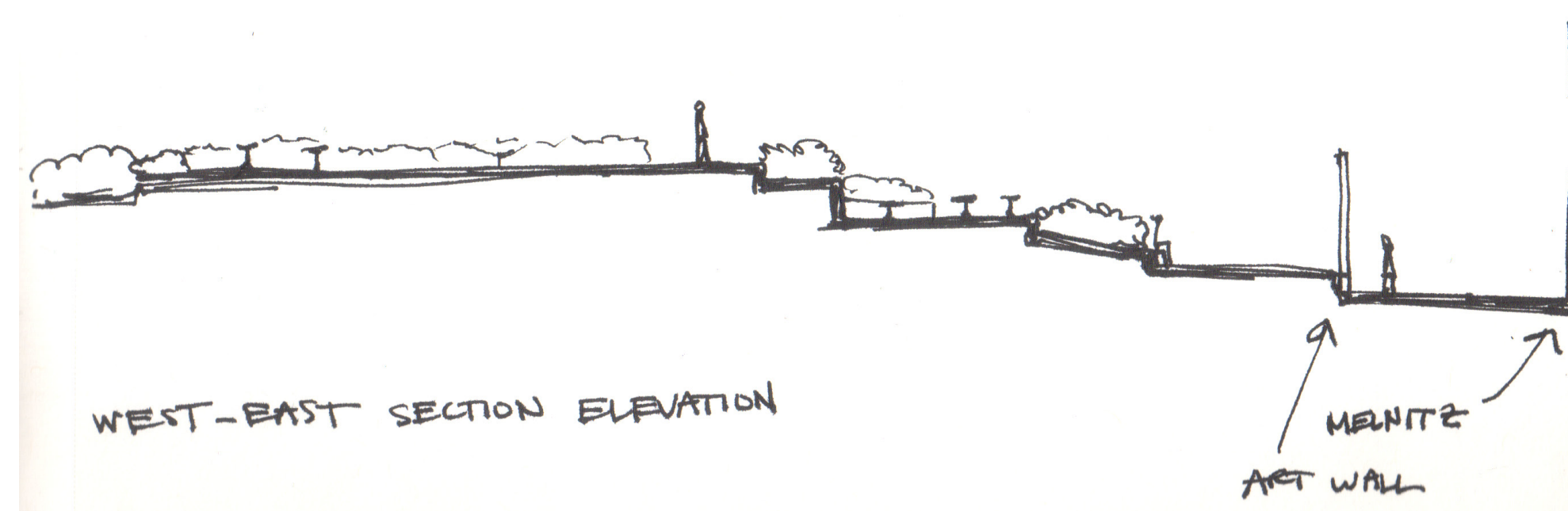
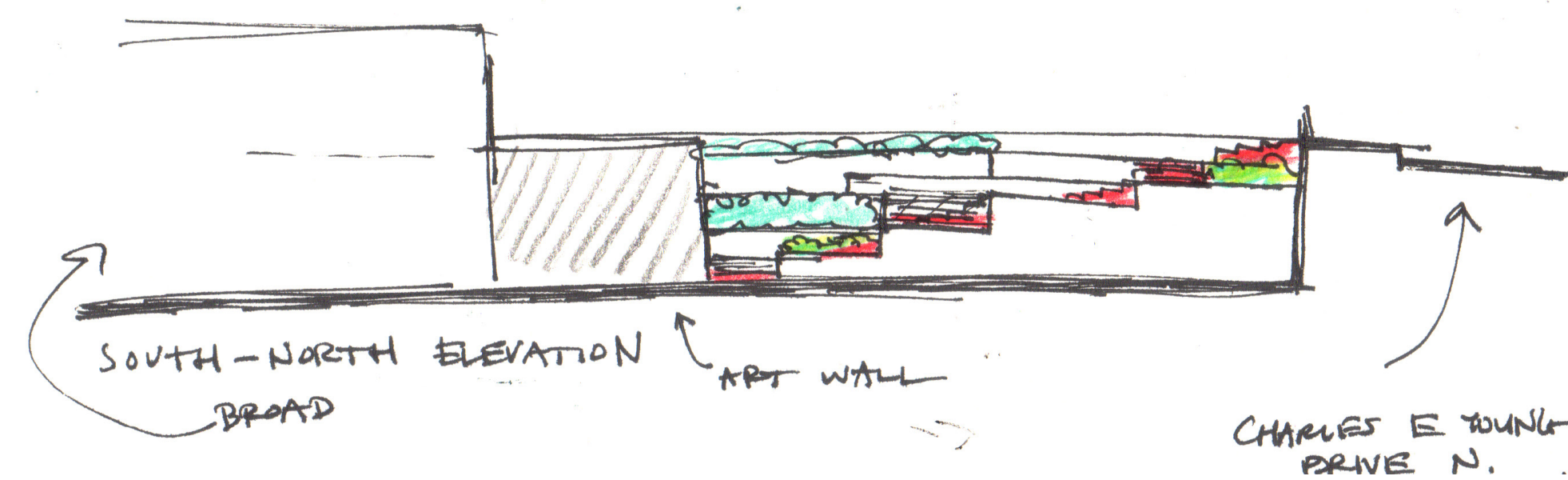
MELNITZ CONCEPTS	
DRAWN BY: JACQUELINE WEE	
DATE: 03.17.21	SCALE: NTS
LD II - JIM SMITH	SHEET NO.: 3 / 8



BUBBLE DIAGRAM

STAIRS AND TERRACE PROGRESSION

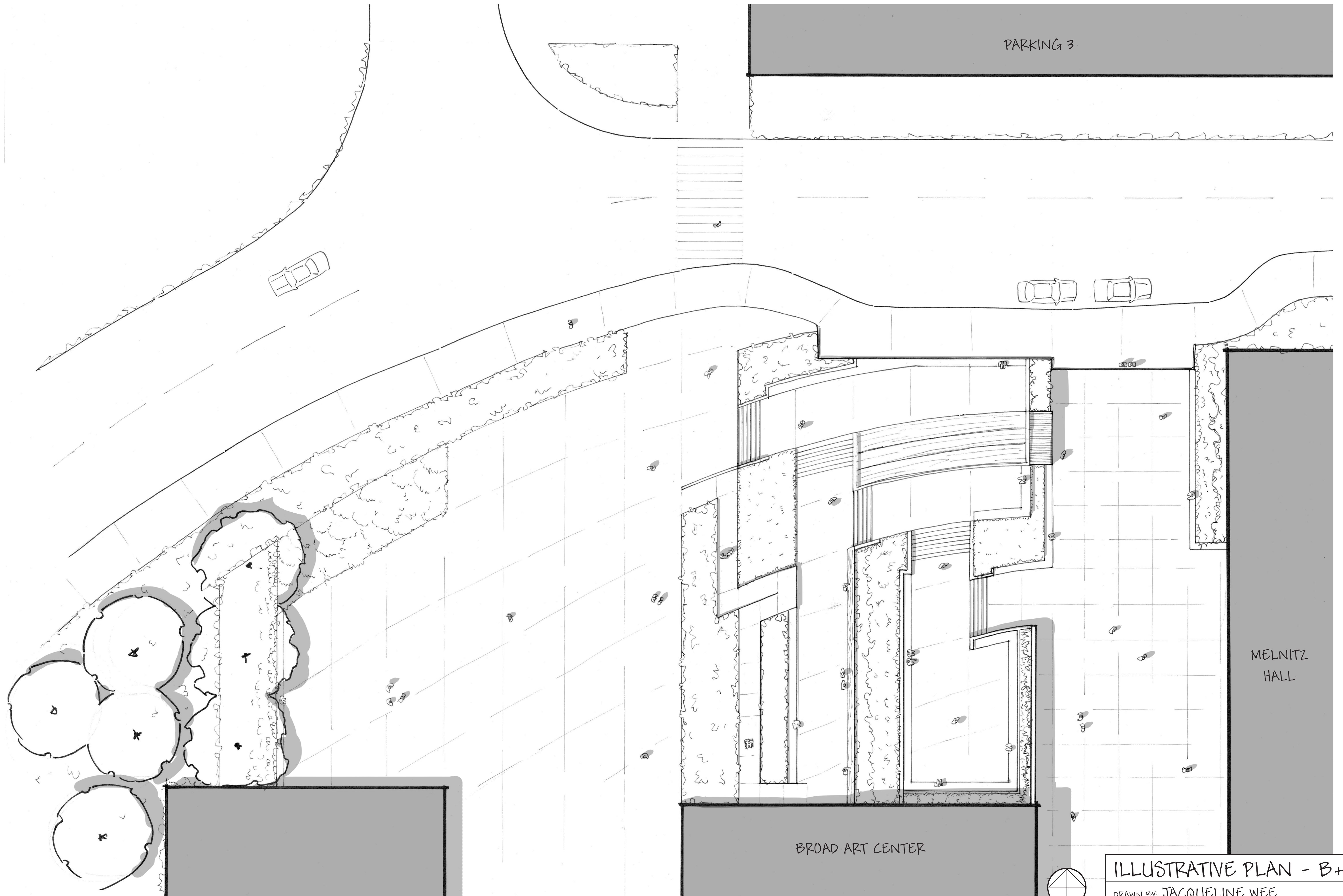
SCHEMATIC SITE DESIGN



SECTION/ELEVATIONS

WEST-EAST SECTION ELEVATION

MELNITZ CONCEPT DEV.	
DRAWN BY: JACQUELINE WEE	
DATE: 03.17.21	SCALE: NTS
LD 11 - JIM SMITH	SHEET NO.: 4 / 8

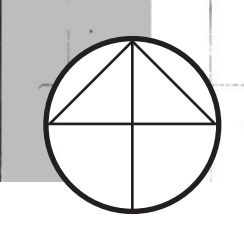


PARKING 3

MELNITZ HALL

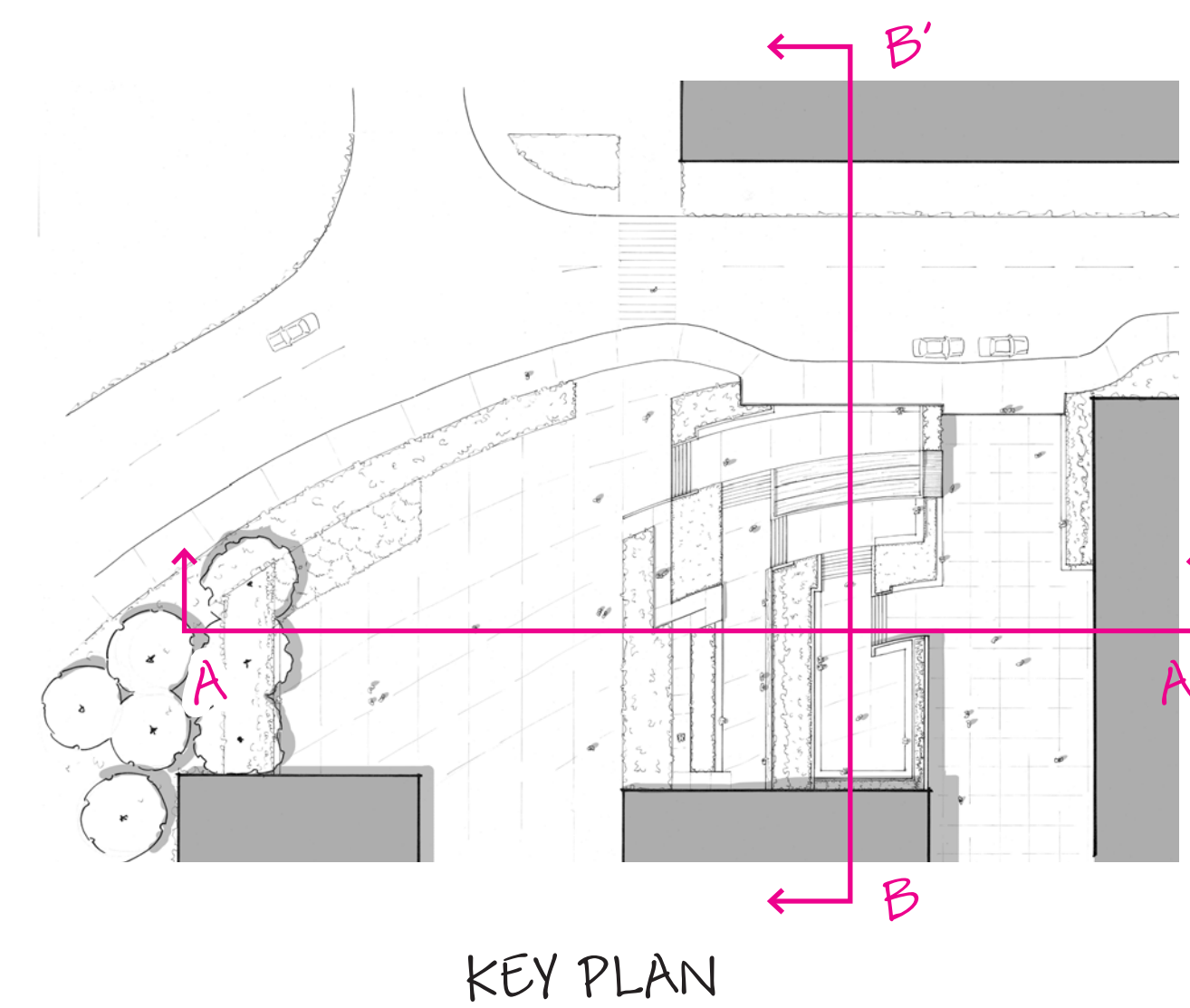
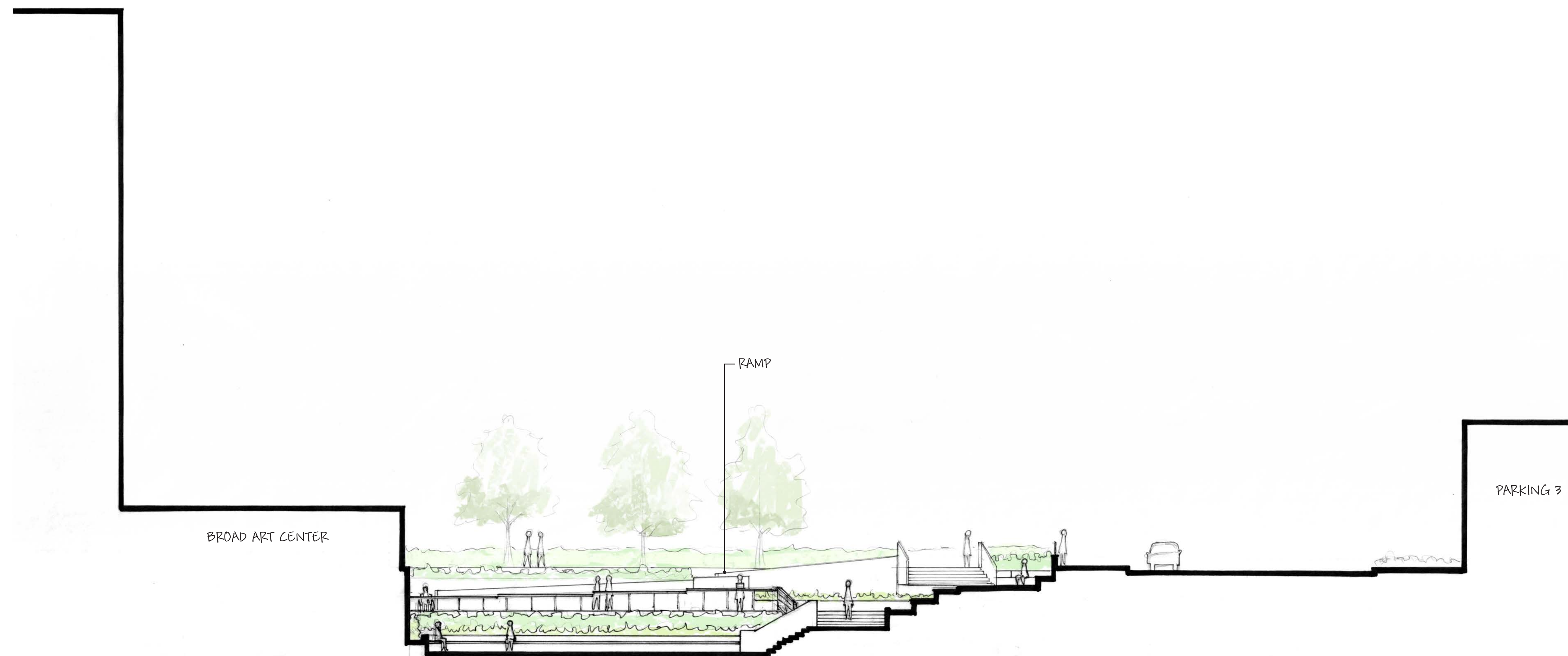
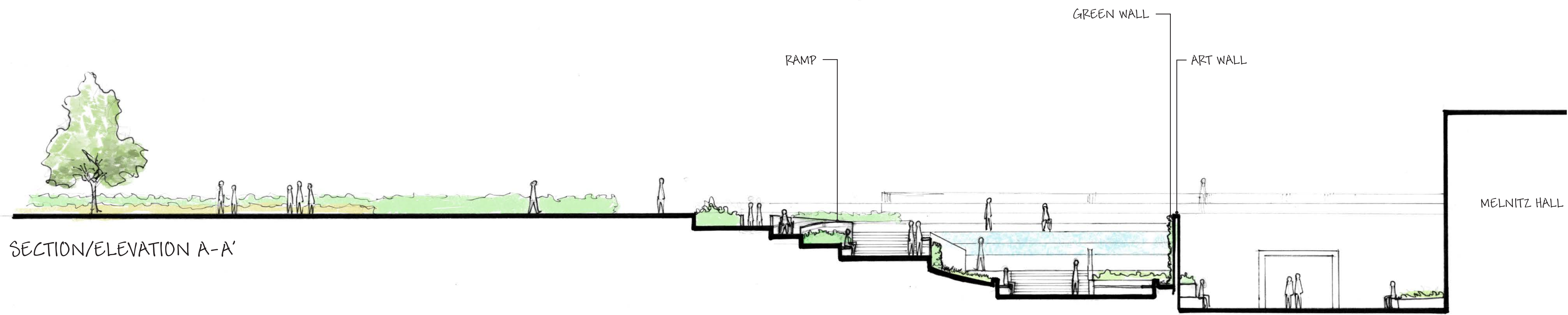
BROAD ART CENTER

ILLUSTRATIVE PLAN - B+W	
DRAWN BY: JACQUELINE WEE	
DATE: 03.17.21	SCALE: 1"=10'
LD II - JIM SMITH	SHEET NO.: 5 / 8



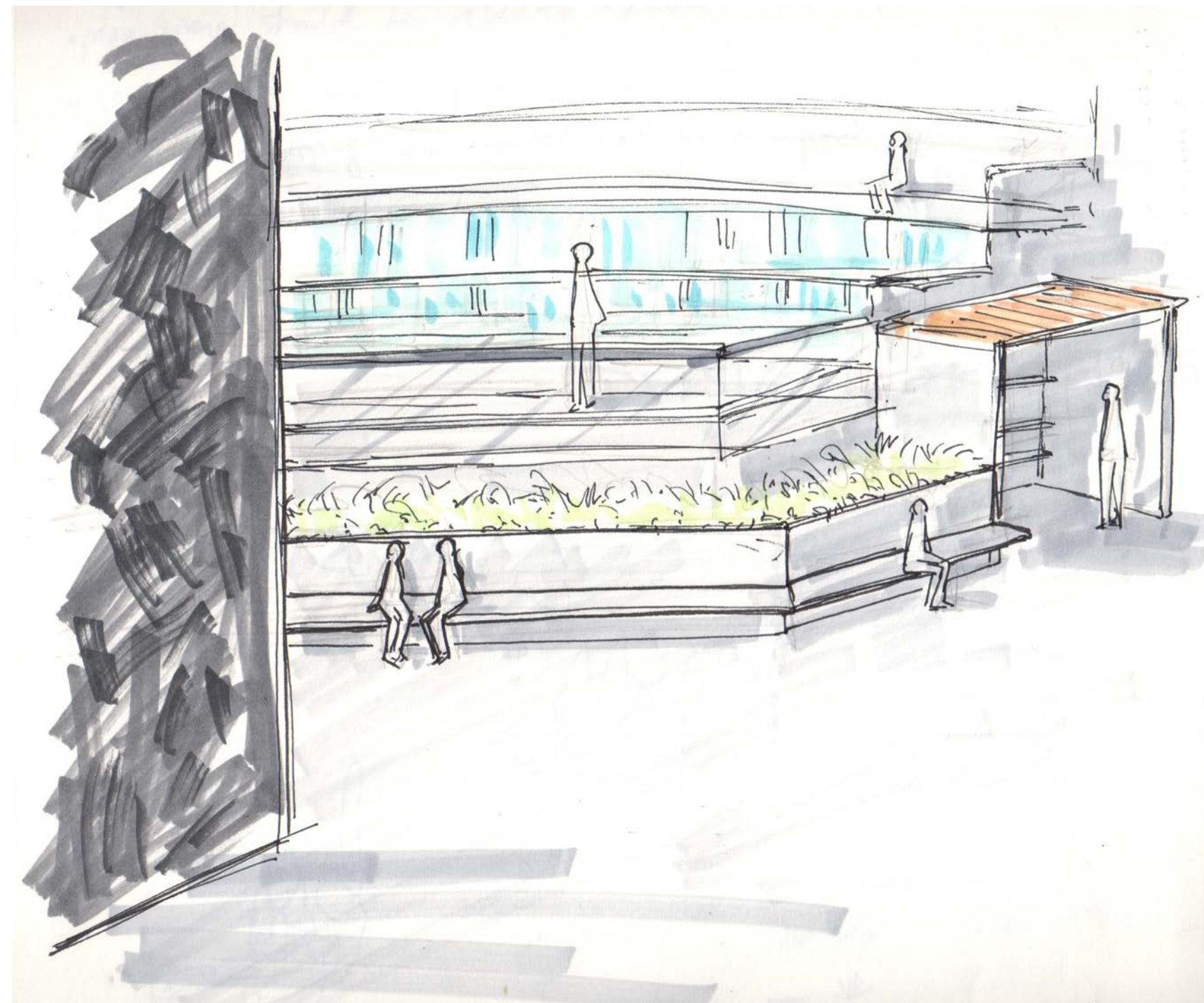


ILLUSTRATIVE PLAN - COLOR	
DRAWN BY: JACQUELINE WEE	
DATE: 03.17.21	SCALE: 1" = 10'
LD 11 - JIM SMITH	SHEET NO.: 6 / 8

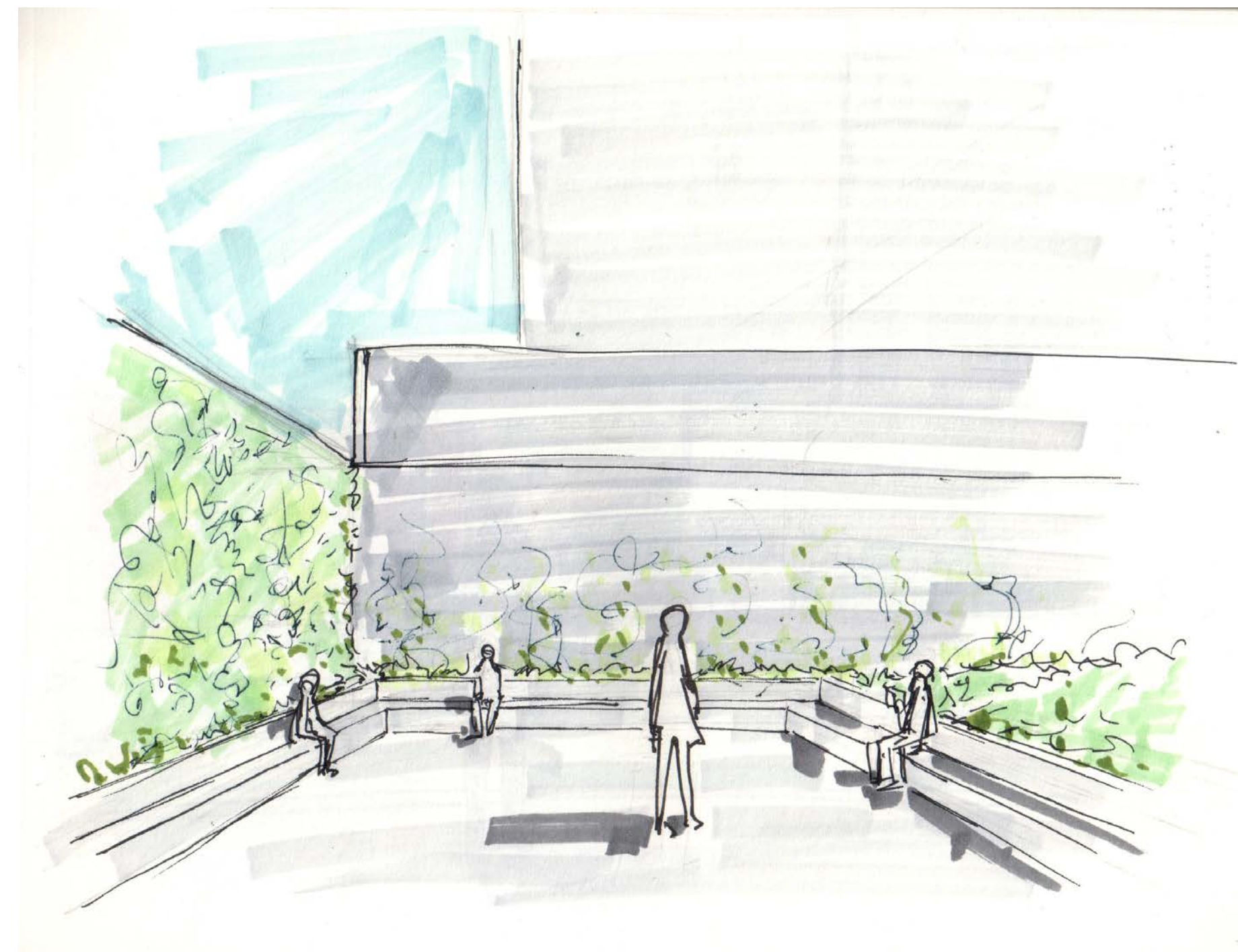


MELNITZ SECTION/ELEVATION	
DRAWN BY: JACQUELINE WEE	
DATE: 03.17.21	SCALE: 1" = 10'
LD II - JIM SMITH	SHEET NO.: 7 / 8

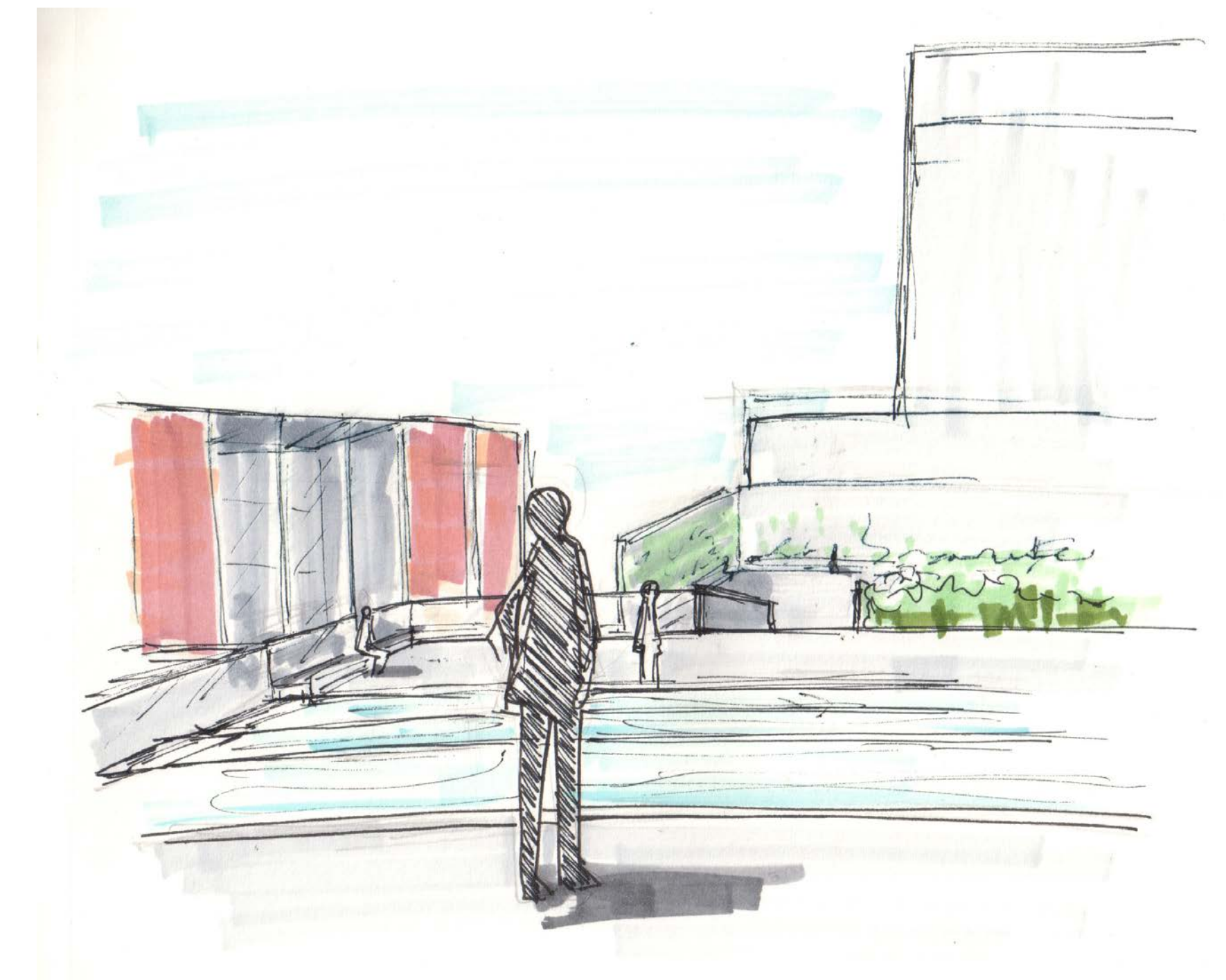




PERSPECTIVE 1



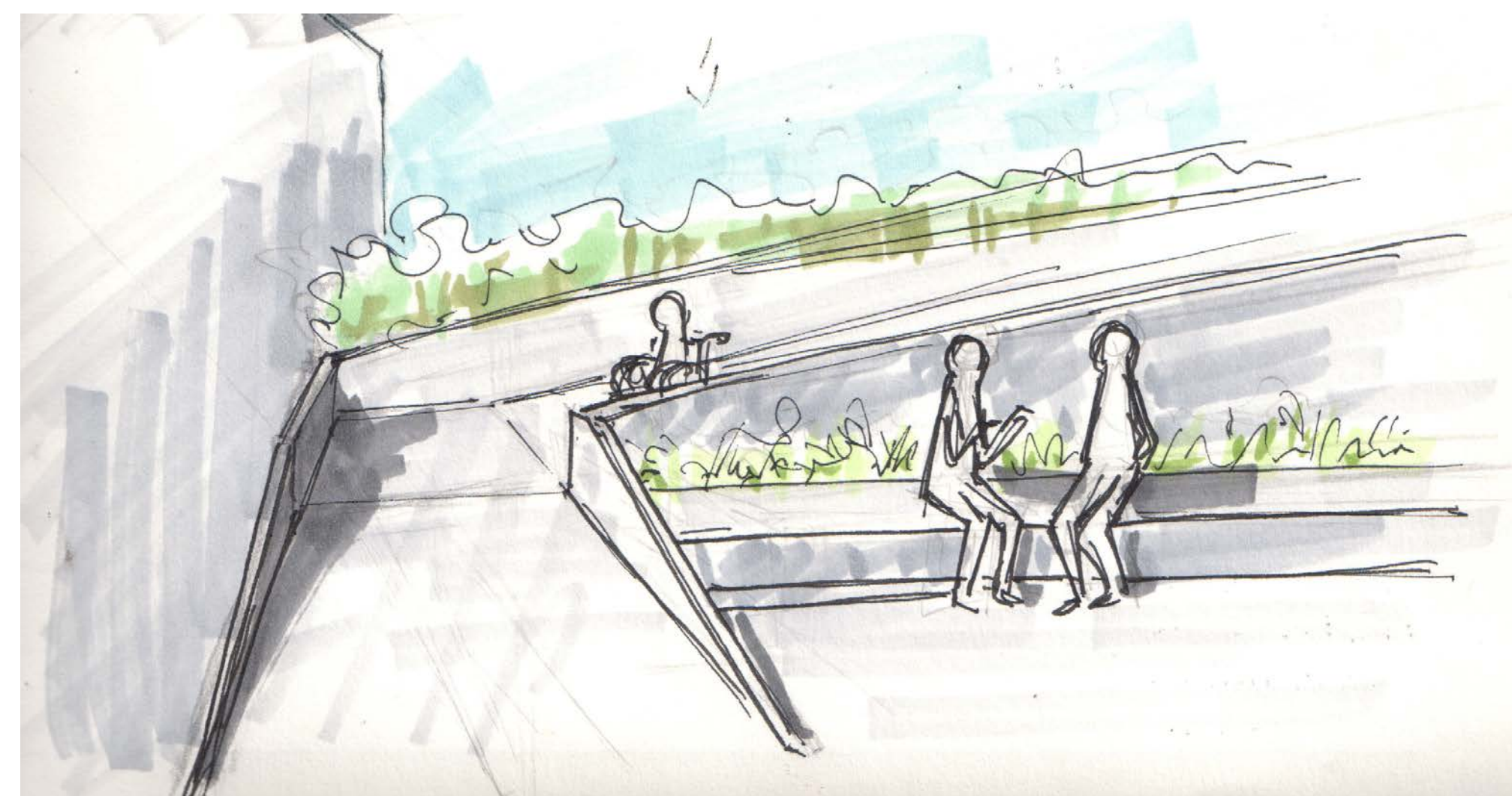
PERSPECTIVE 2



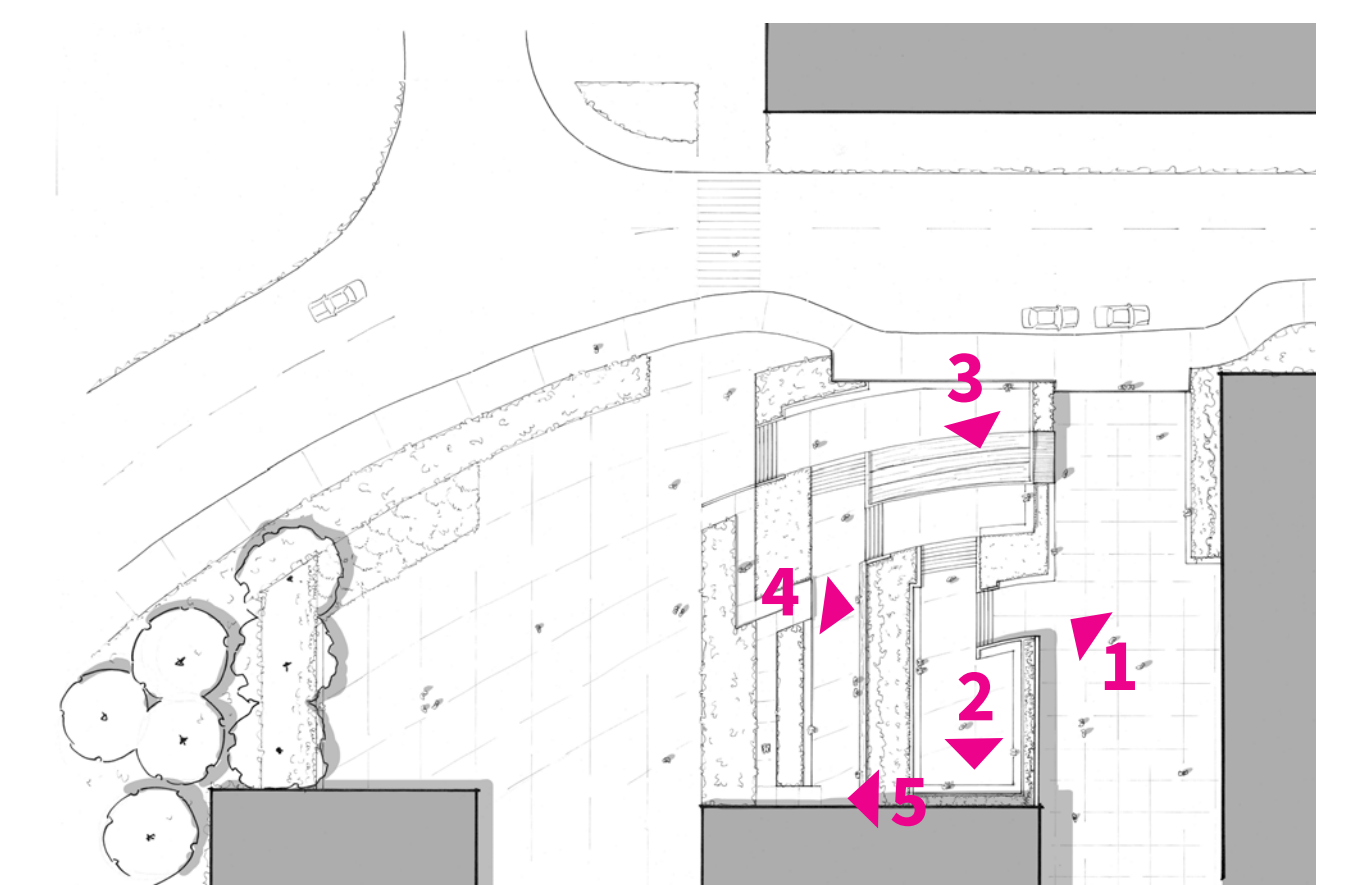
PERSPECTIVE 3



PERSPECTIVE 4



PERSPECTIVE 5



KEY PLAN

MELNITZ SKETCHES	
DRAWN BY: JACQUELINE WEE	
DATE: 03.17.21	SCALE: NTS
LD II - JIM SMITH	SHEET NO.: 8 / 8