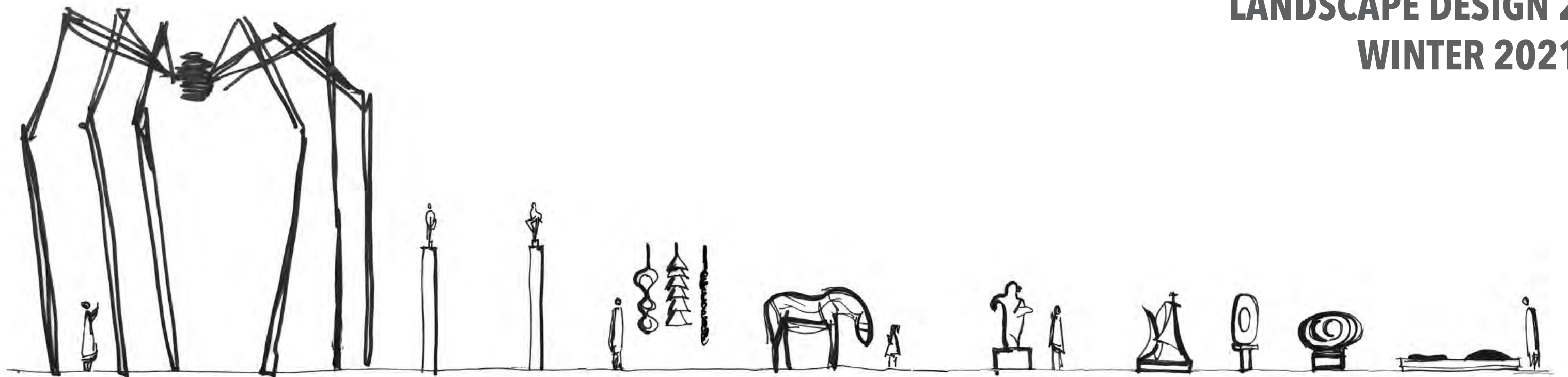
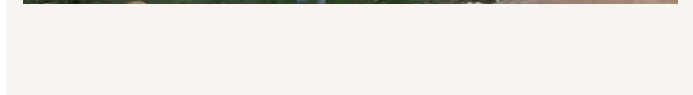
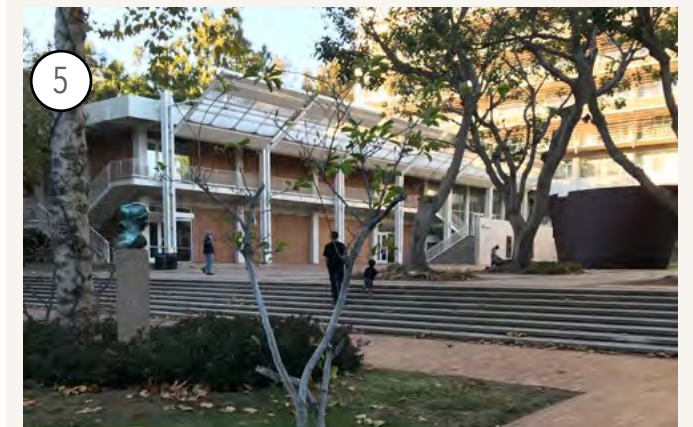
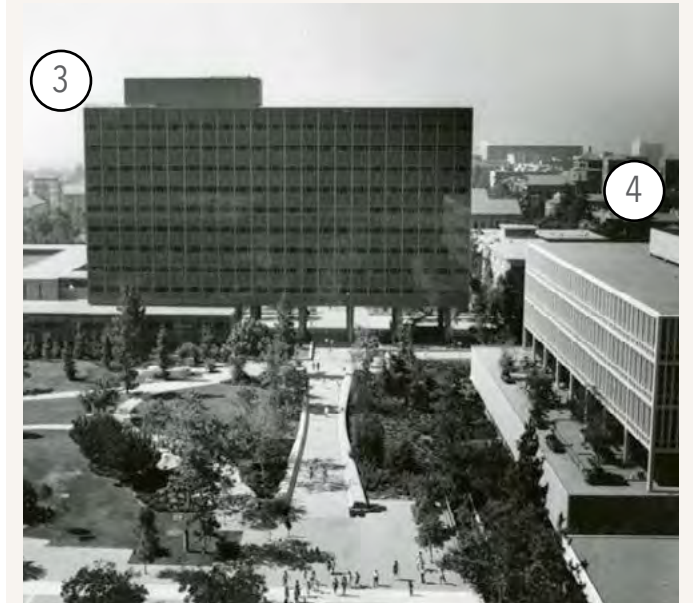
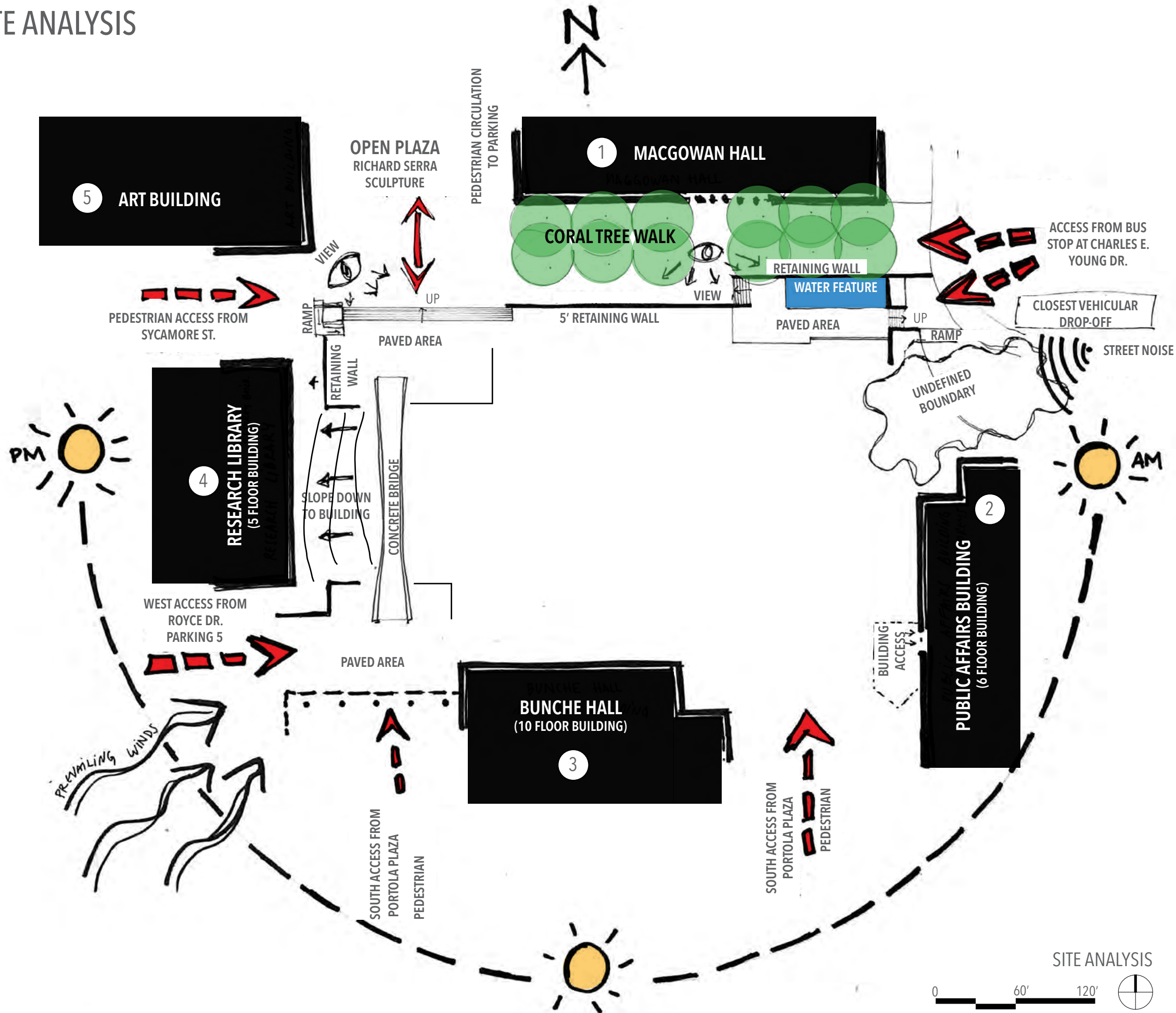


MURPHY SCULPTURE GARDEN

LANDSCAPE DESIGN 2
WINTER 2021



SITE ANALYSIS



SCULPTURE SELECTION

1. MERE UBU - JOAN MIRO

YEAR: 1975
 MATERIALS: BRONZE
 DIMENSIONS: 67" (h) x 45" (w) x 35" (d)



2. BUTTON FLOWER - ALEXANDER CALDER

YEAR: 1959
 MATERIALS: PAINTED SHEET STEEL
 DIMENSIONS: 70" (h) x 52" (w) x 43" (d)



3. DANCE COLUMNS I AND II - ROBERT GRAHAM

YEAR: 1978
 MATERIALS: BRONZE
 DIMENSIONS: 102" (h) x 164" (w) x 15" (d)



4. GARDEN ELEMENTS - ISAMU NOGUCHI

YEAR: 1962
 MATERIALS: BRONZE (SET IN AGGREGATE CONCRETE)
 DIMENSIONS: 10 3/4" (h) x 96" (w) x 120" (d)



5. ELEGY III - BARBARA HEPWORTH

YEAR: 1966
 MATERIALS: BRONZE
 DIMENSIONS: 51" (h) x 25" (w) x 19" (d)



6. OVAL FORM - BARBARA HEPWORTH

YEAR: 1961 - 63
 MATERIALS: BRONZE
 DIMENSIONS: 33 1/2" (h) x 55" (w) x 35" (d)



7. PENSIVE - DEBORAH BUTTERFIELD

YEAR: 1997
 MATERIALS: BRONZE
 DIMENSIONS: 79" (h) x 106" (w) x 27" (d)



8. MAMAN (1999) - LOUISE BOURGEOIS

YEAR: 1999
 MATERIALS: BRONZE, MARBLE, STAINLESS STEEL
 DIMENSIONS: 29' (h) x 32' (w) x 38' (d)



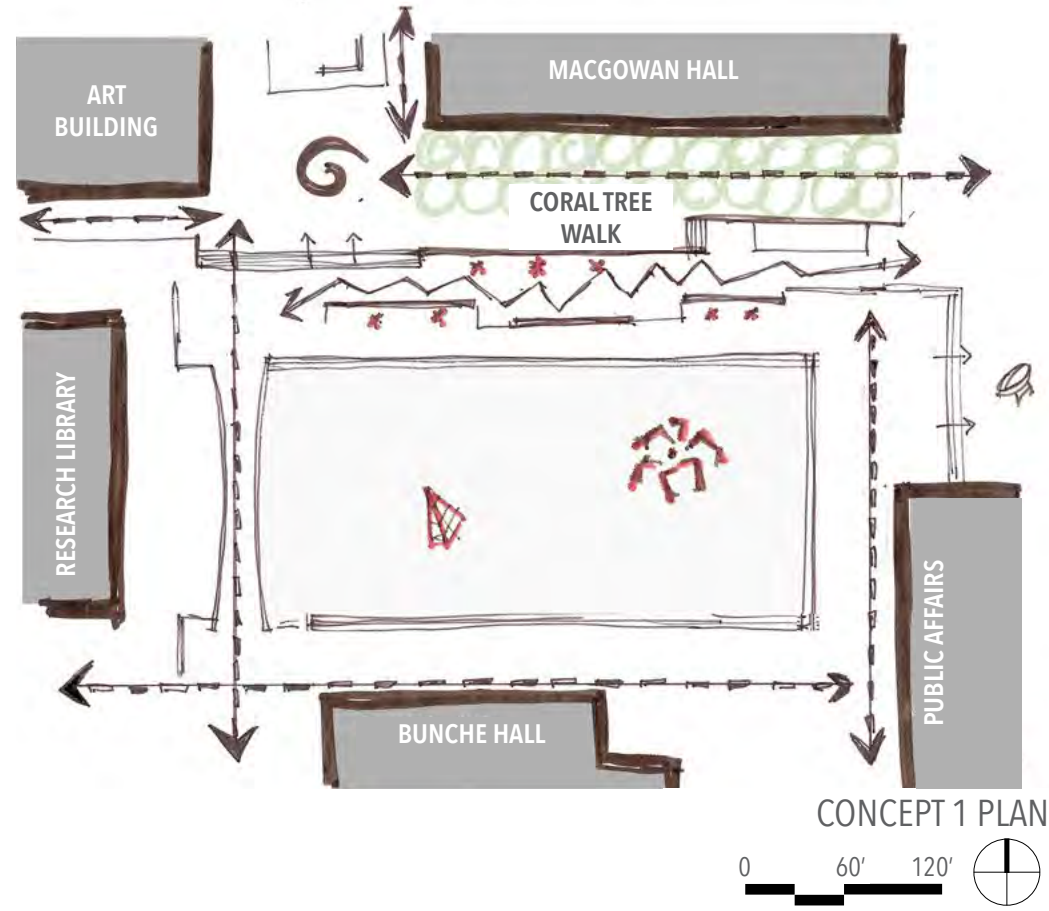
9. TIED WIRE SCULPTURE - RUTH ASAWA

YEAR: VARIOUS
 MATERIALS: WIRE
 DIMENSIONS: VARIOUS

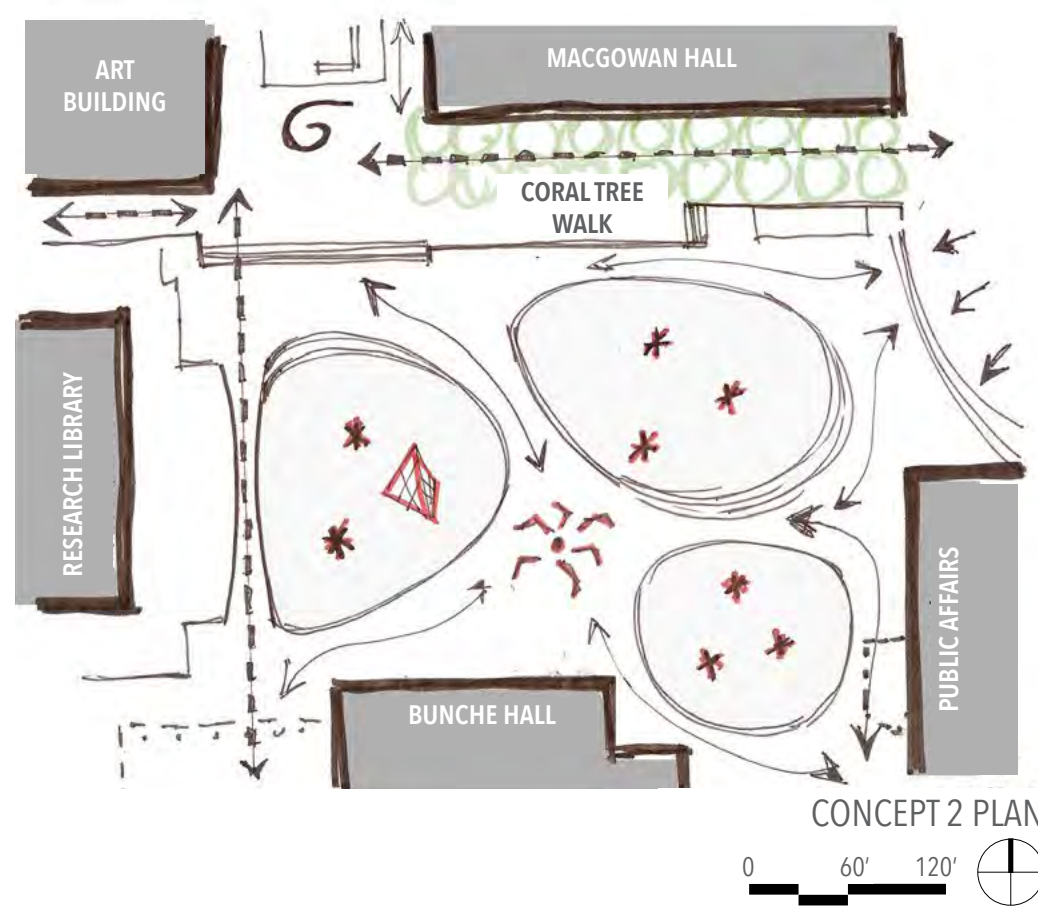


DESIGN CONCEPTS

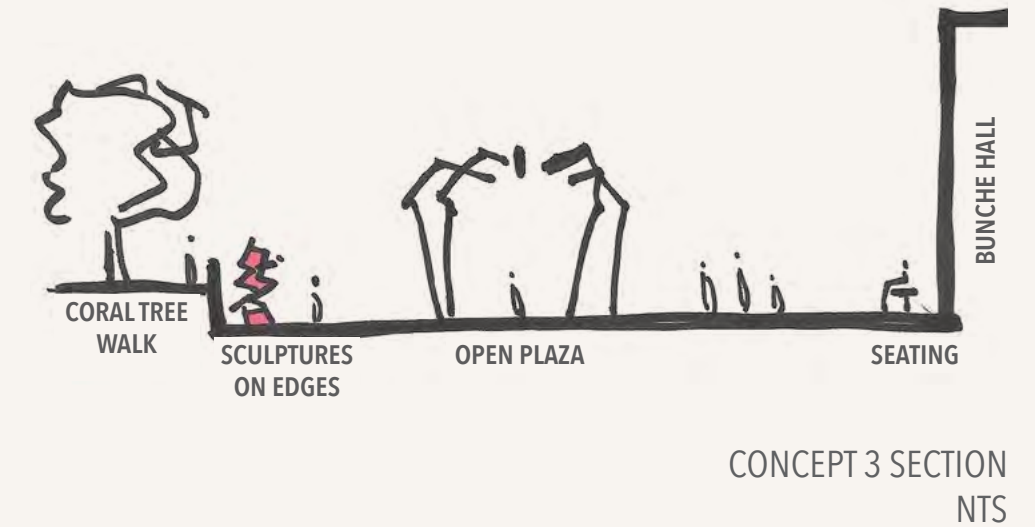
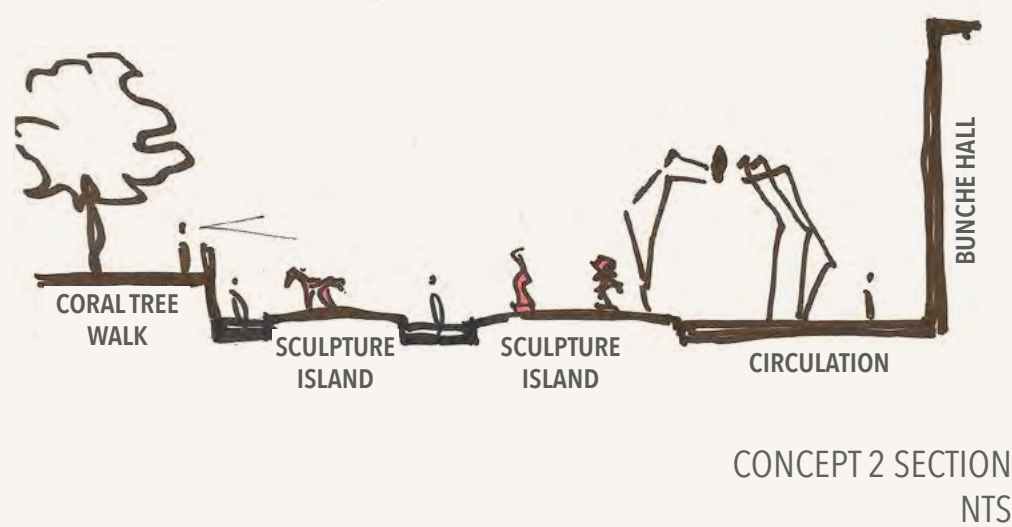
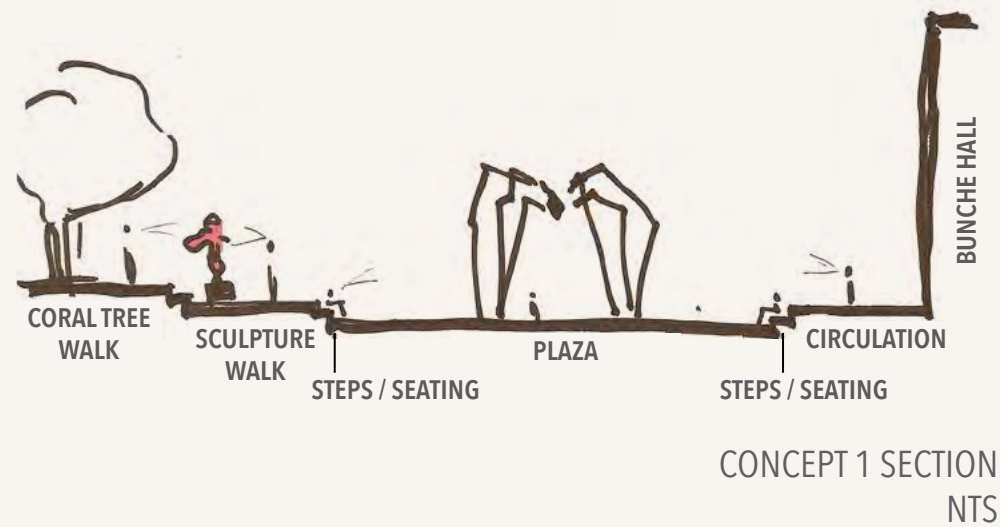
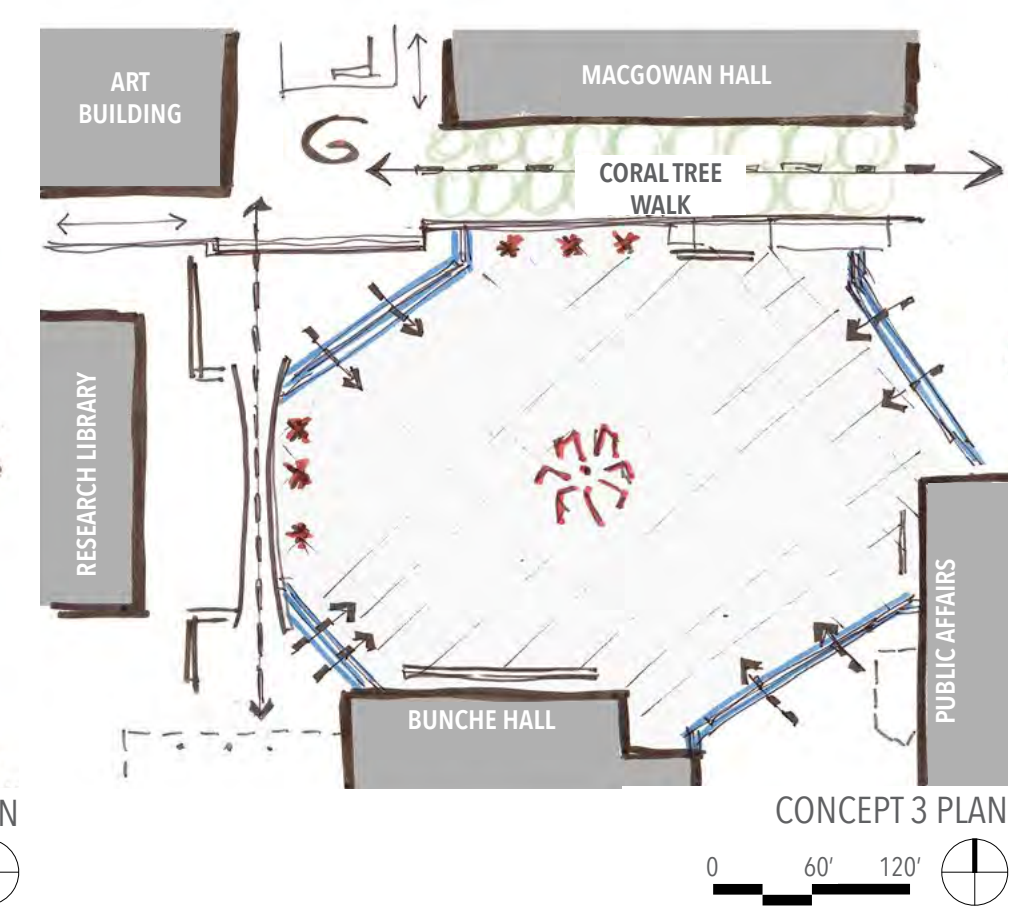
CONCEPT 1:
CENTRAL PLAZA + SCULPTURE WALK



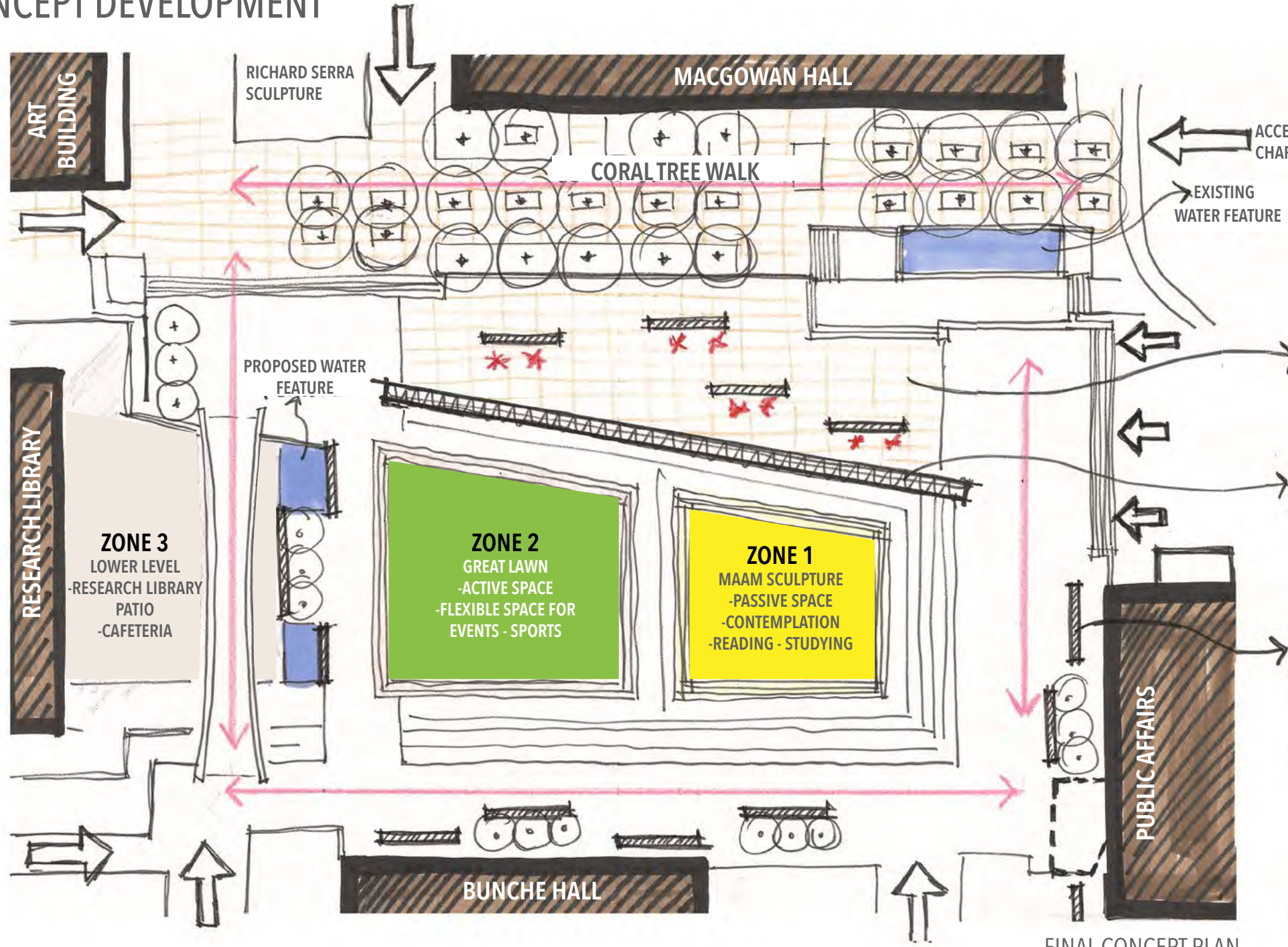
CONCEPT 2:
SCULPTURE ISLANDS



CONCEPT 3:
DIAGONAL CORNERS



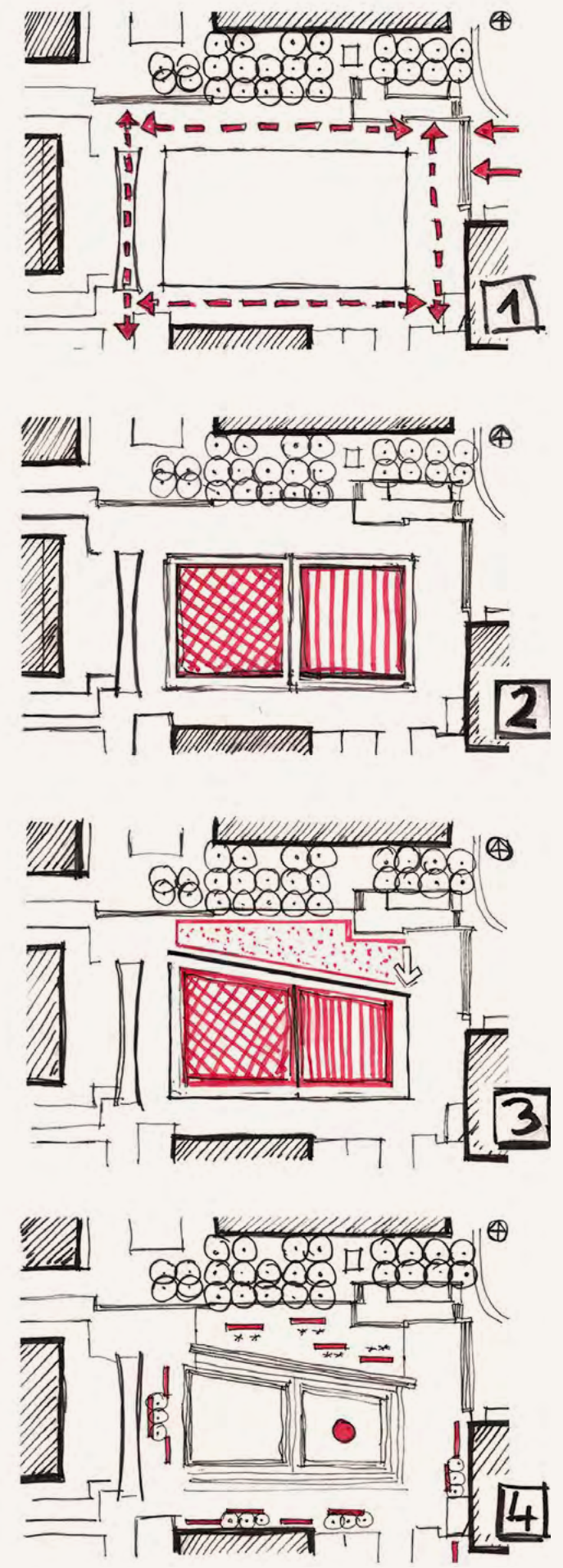
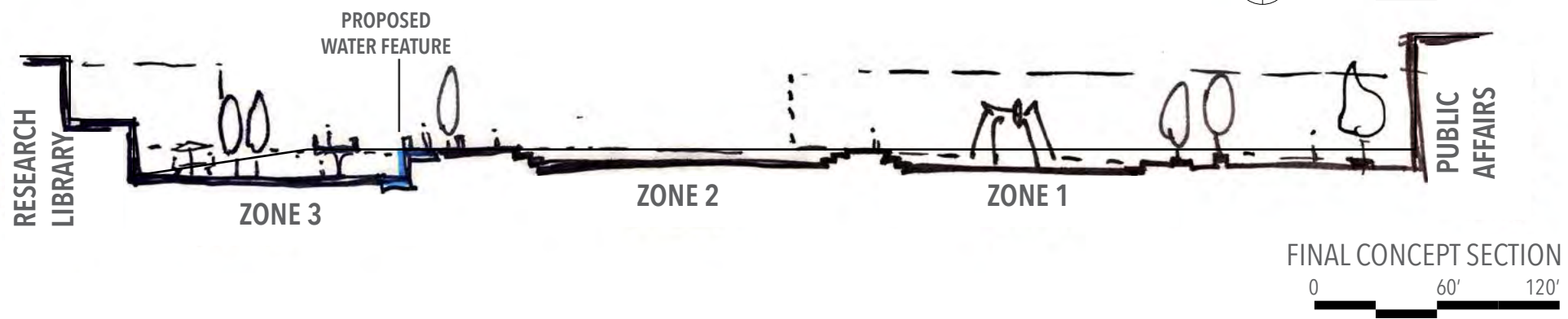
CONCEPT DEVELOPMENT



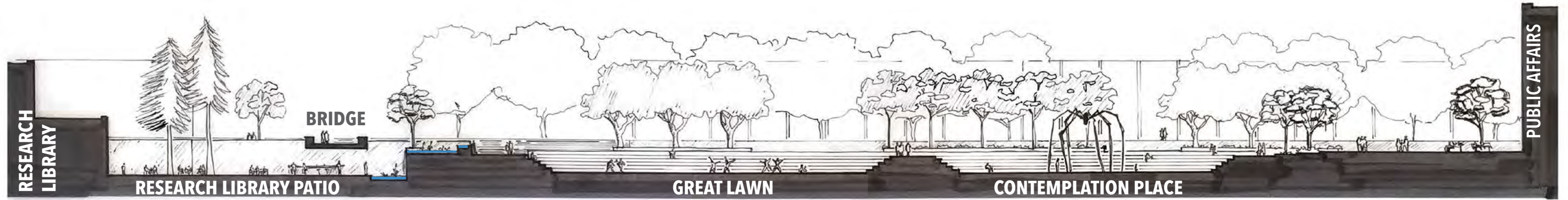
SCULPTURE WALK
EXTENSION OF CORAL TREE WALK

DIAGONAL ELEMENT
BUFFER BETWEEN SCULPTURE WALK
AND MAIN GARDEN AREA

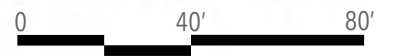
HORIZONTAL ELEMENTS
REPETITION ALONG PERIMETER
PARALLEL TO BUILDINGS
SUPPORT FOR:
- SCULPTURES
- PLANTS
- SEATING AREAS



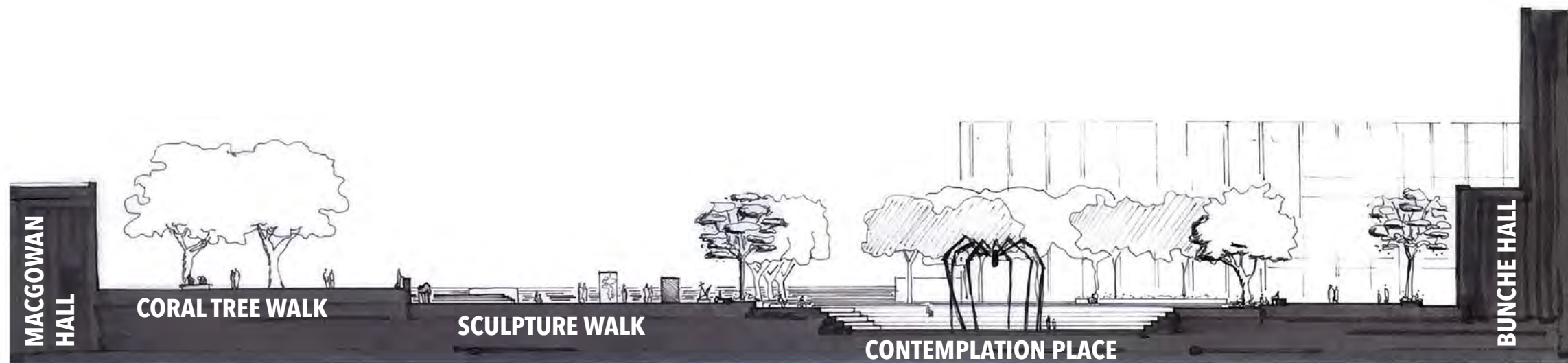
SECTIONS



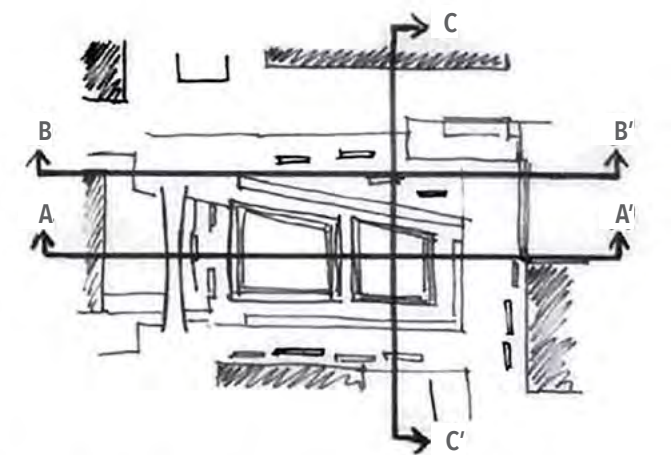
SECTION A-A'



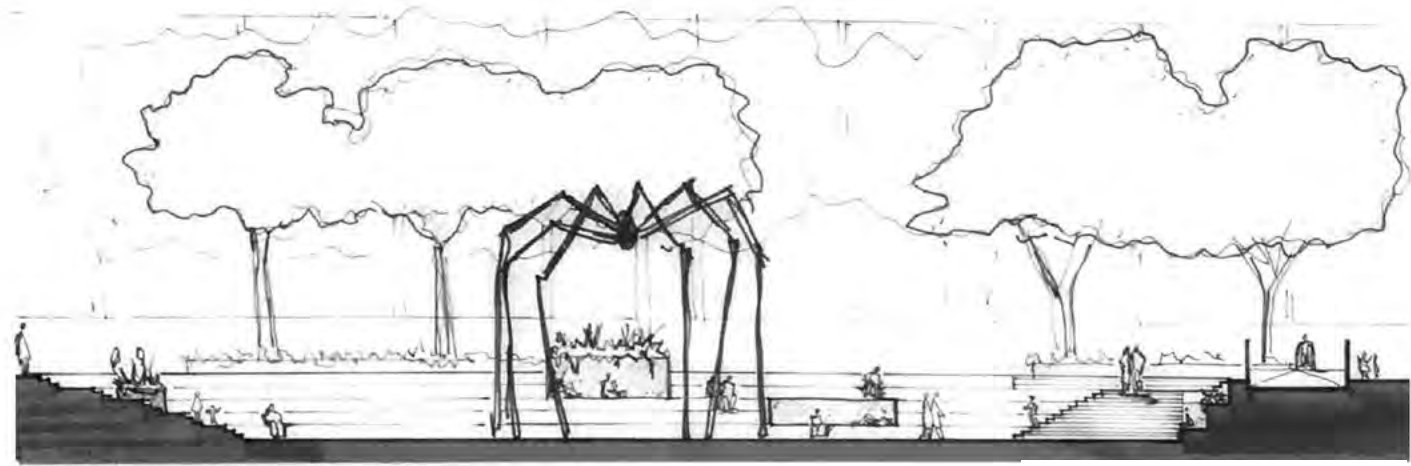
SECTION B-B'



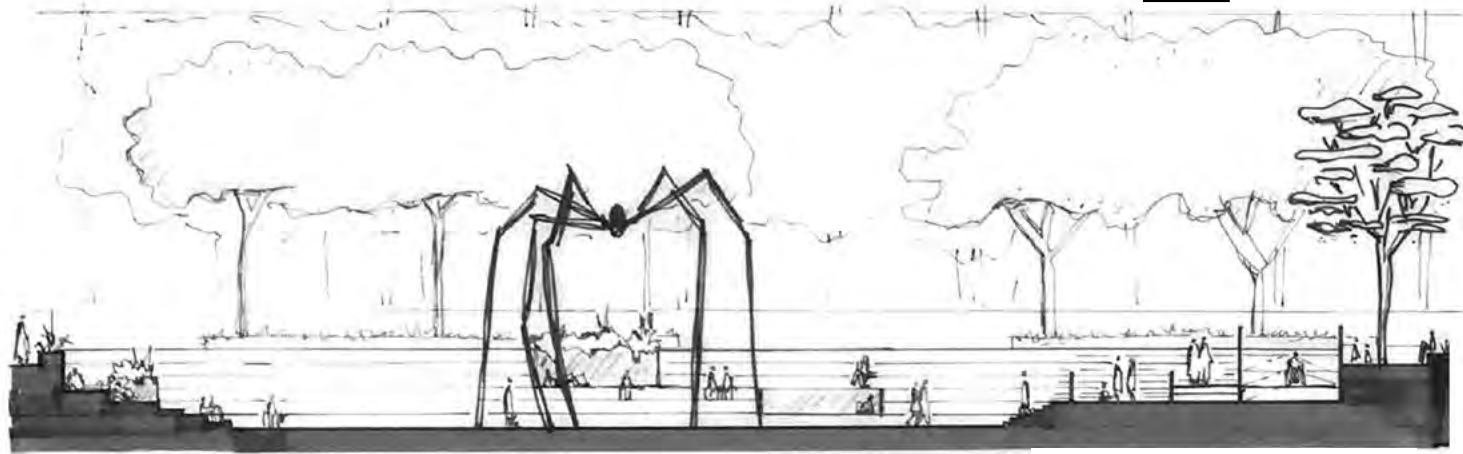
SECTION C-C'



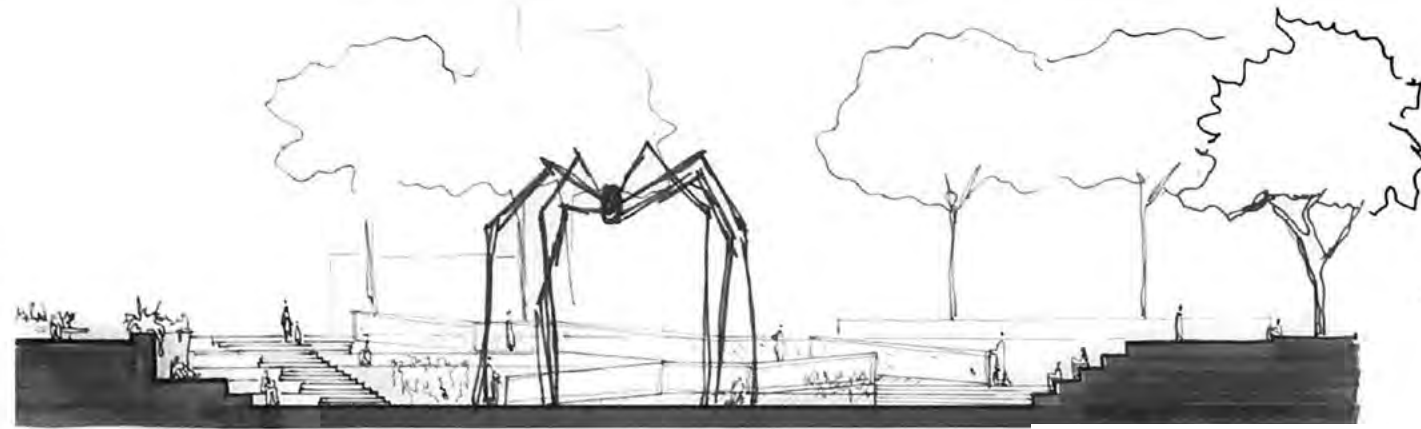
SITE ENLARGEMENT - CONTEMPLATION PLACE



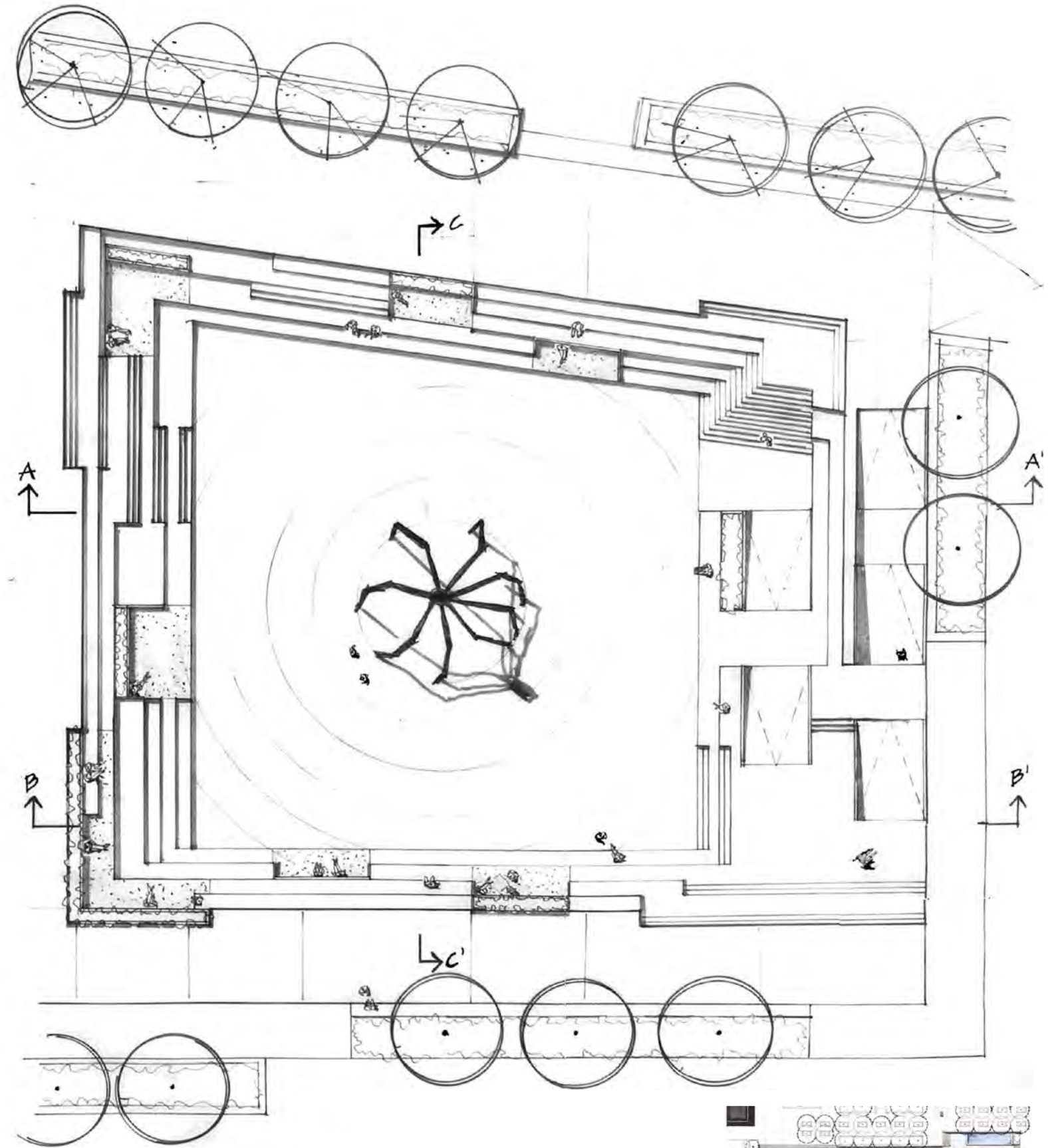
0 20' 40'



0 20' 40'



0 20' 40'



0 20' 40'

