

A large, mature tree with dense green foliage against a clear blue sky. The tree's branches are thick and gnarled, and the leaves are a vibrant green. The sky is a clear, light blue.

# PROJECT I

RESIDENTIAL PLANTING DESIGN  
1834 16th St. SANTA MONICA, CA

brianna gorton // ld5 // 2021  
stephen davis // landscape architecture

## SOUTHERN CALIFORNIA NATURALISTIC HAVEN

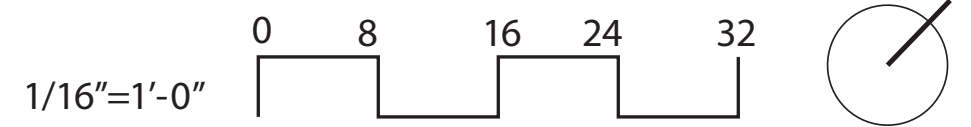
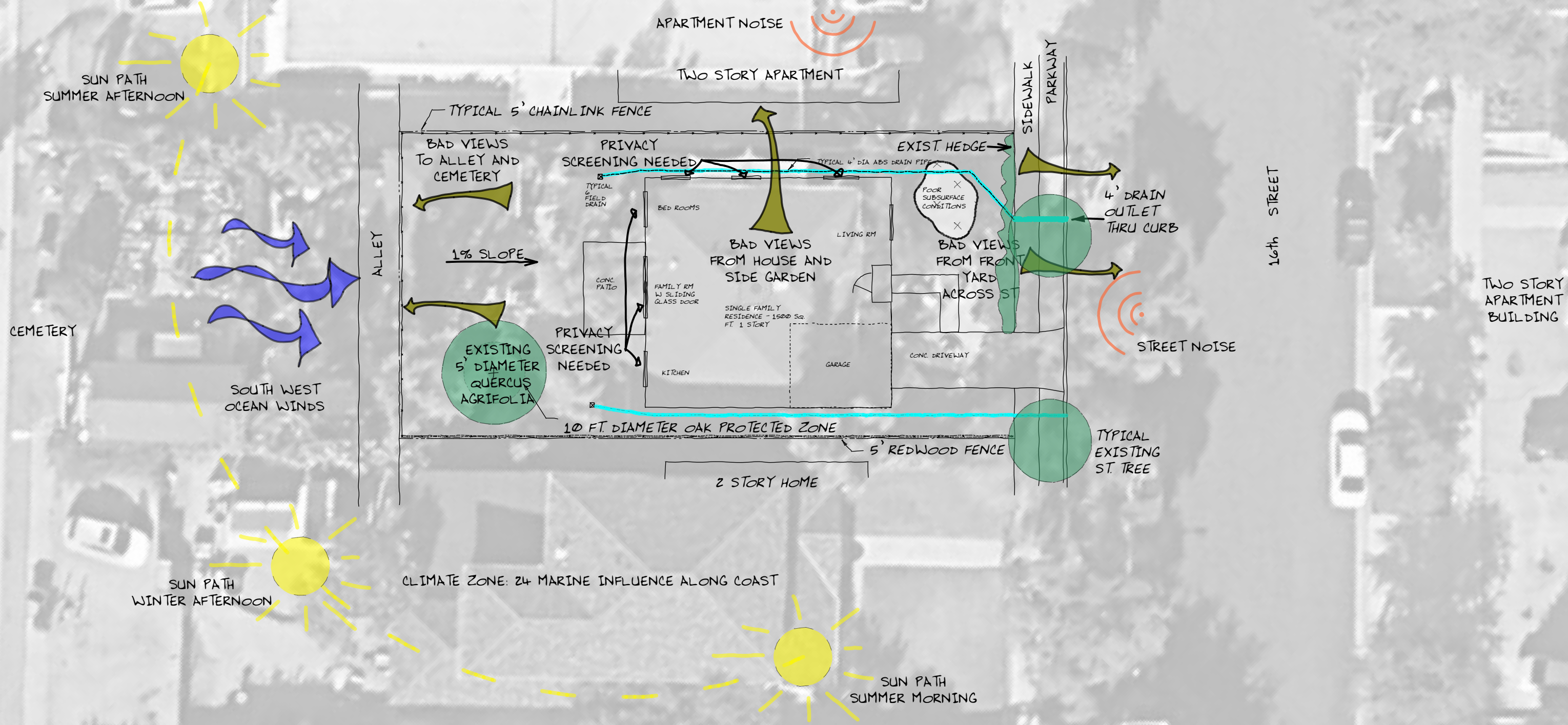
Your residential design provides pollinator & wildlife friendly planting, with a focus on California native, California friendly, and edible plants. Water will be held on site, diverted into a rain garden, planted with plants that will filter the water and hold it on-site.

The shade garden under your California native Oak provides seasonal interest as well as a quiet space for reading, meditation and practicing yoga. The deck provided ample room for yoga and reading, while also protecting the precious *Quercus agrifolia*.

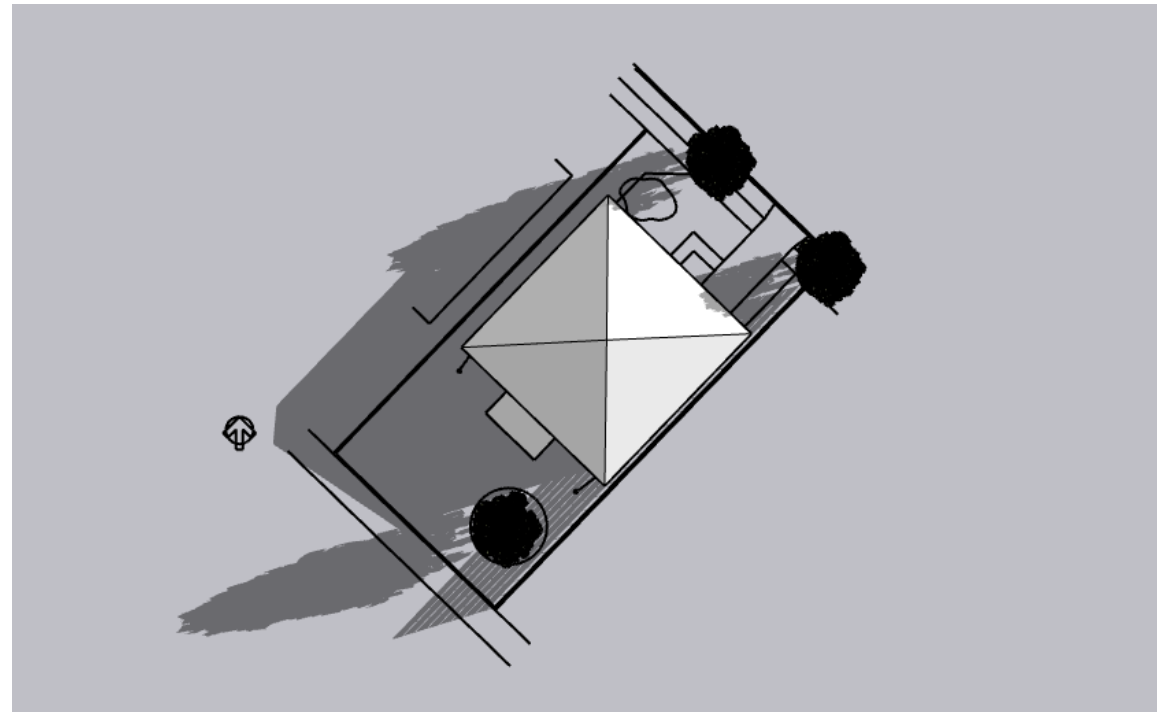
The lawn of California native grass can be mowed or clipped or left long and natural, and provides play space for your 8 year old daughter & Dachshund. The tree stumps are a sculptural element that also provide for nature play.

A kitchen garden plot of two raised beds allows for growing a variety of fruits, vegetables, and herbs. And a lemon tree will provide gourmet lemons, and passionfruit vines provide edible passionfruit.

Screening provides privacy from inside the house through windows and outside in the garden, with a layering of climbing vines, flowering shrubs and hedges.

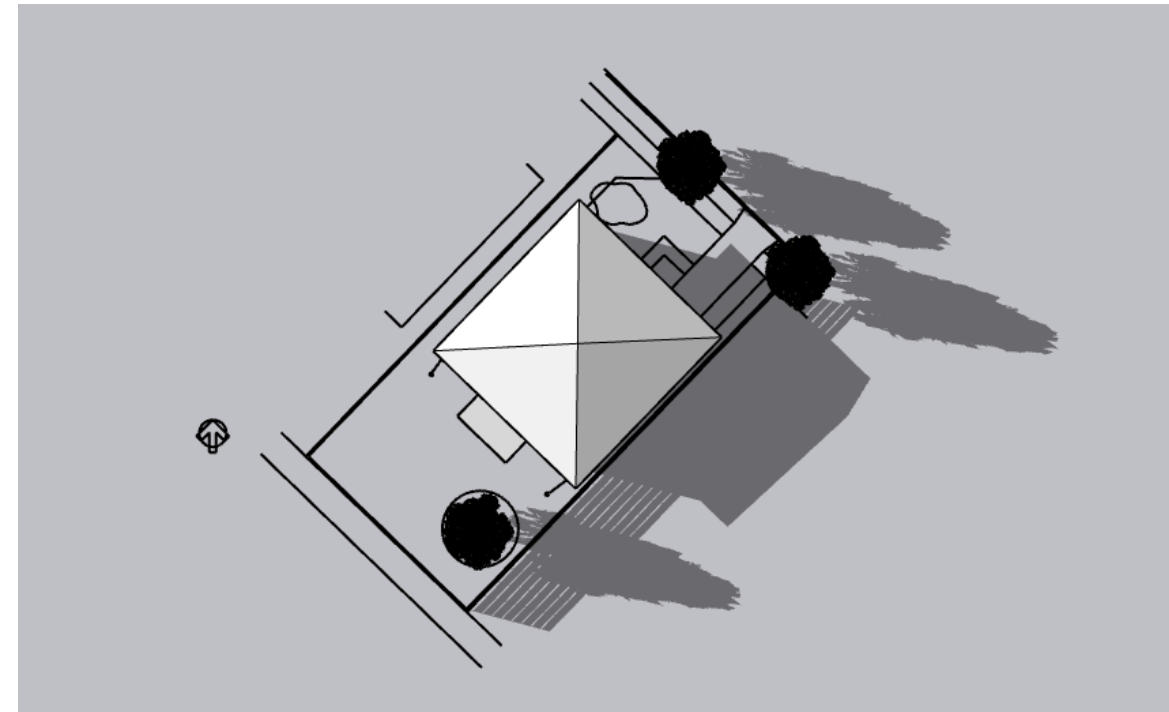


# SUNRISE

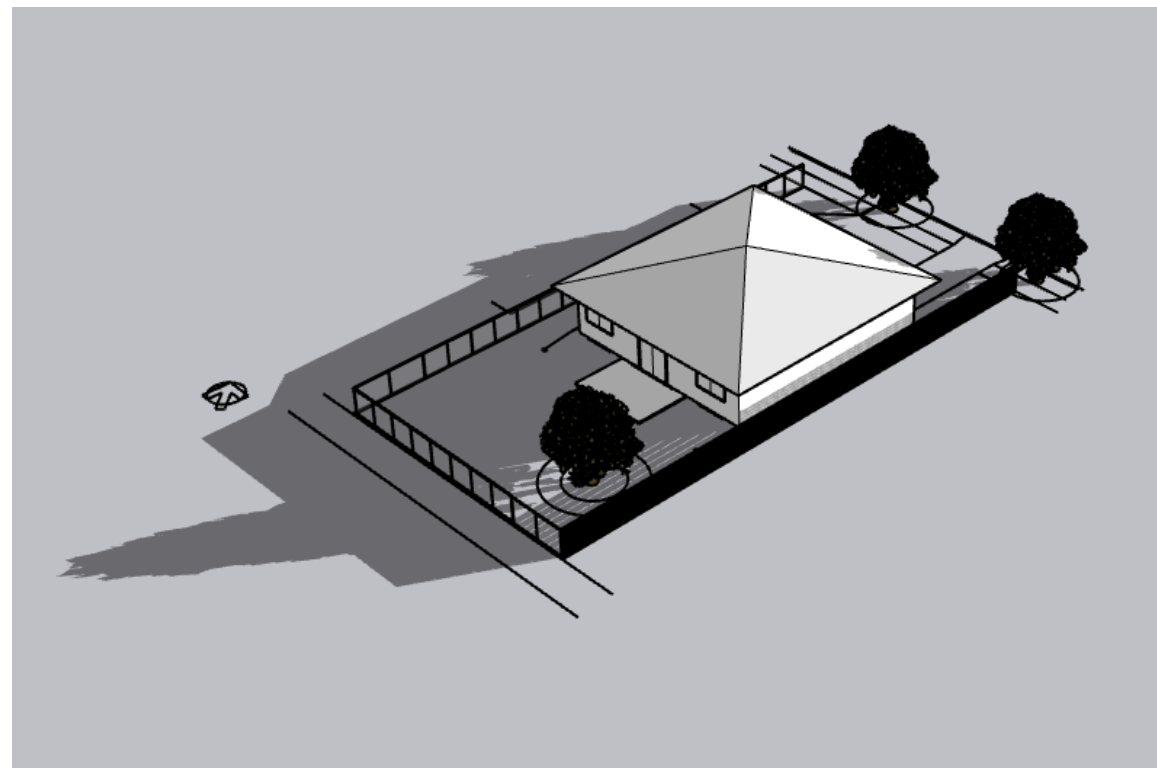


6am Summer Sunrise, Plan View

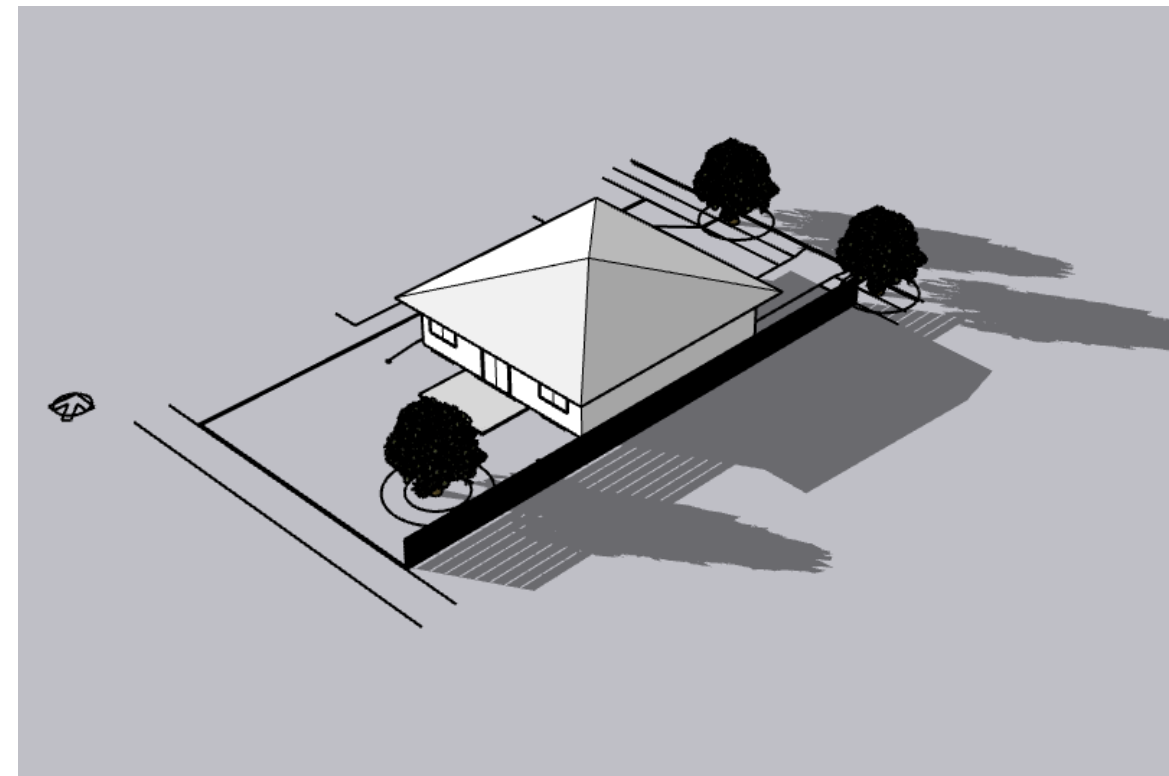
# SUNSET



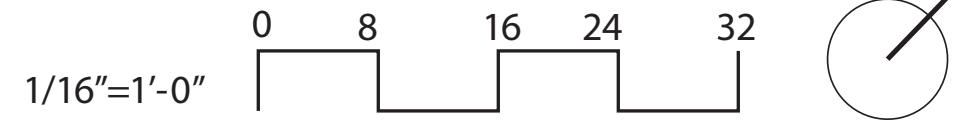
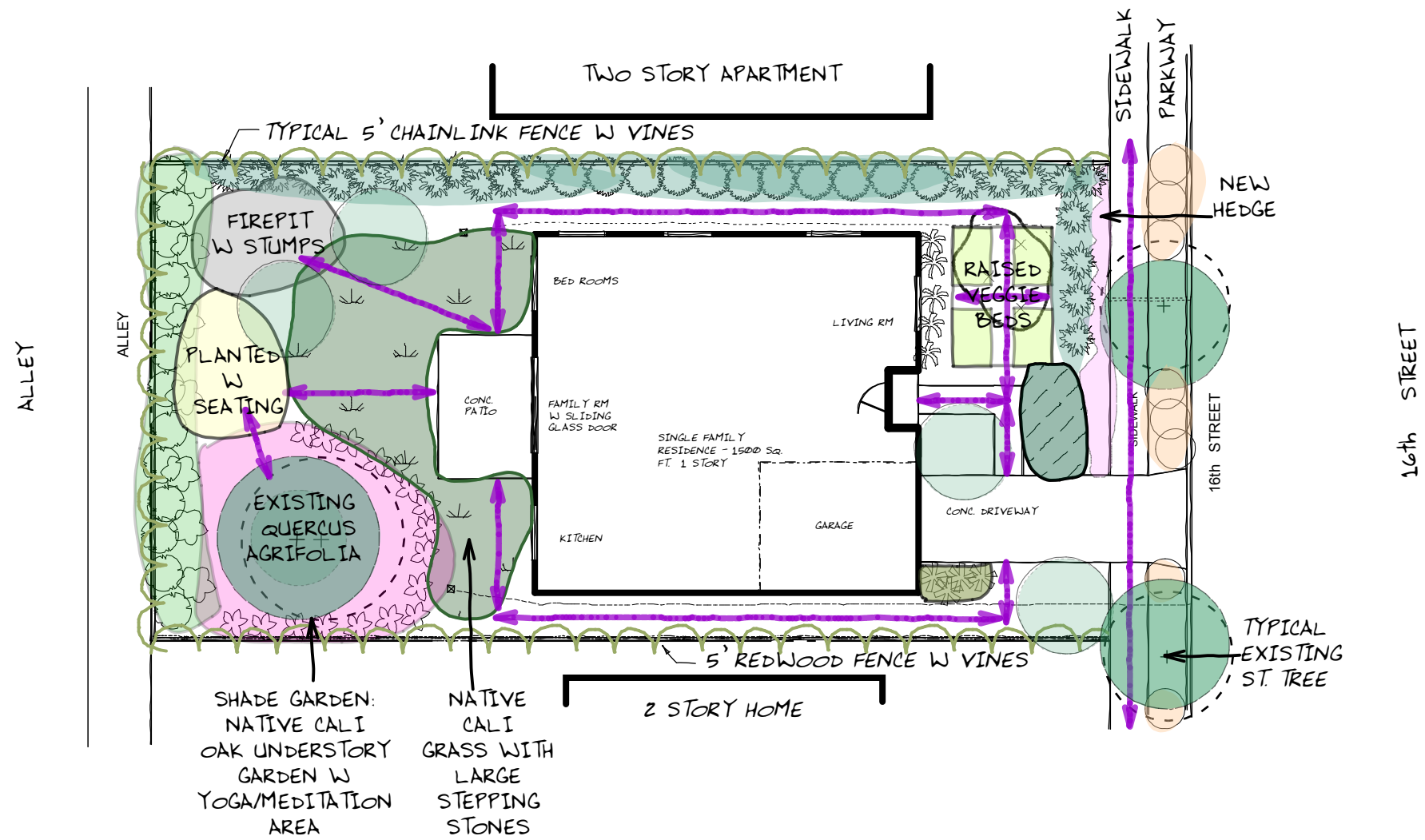
6pm Summer Sunset, Plan View

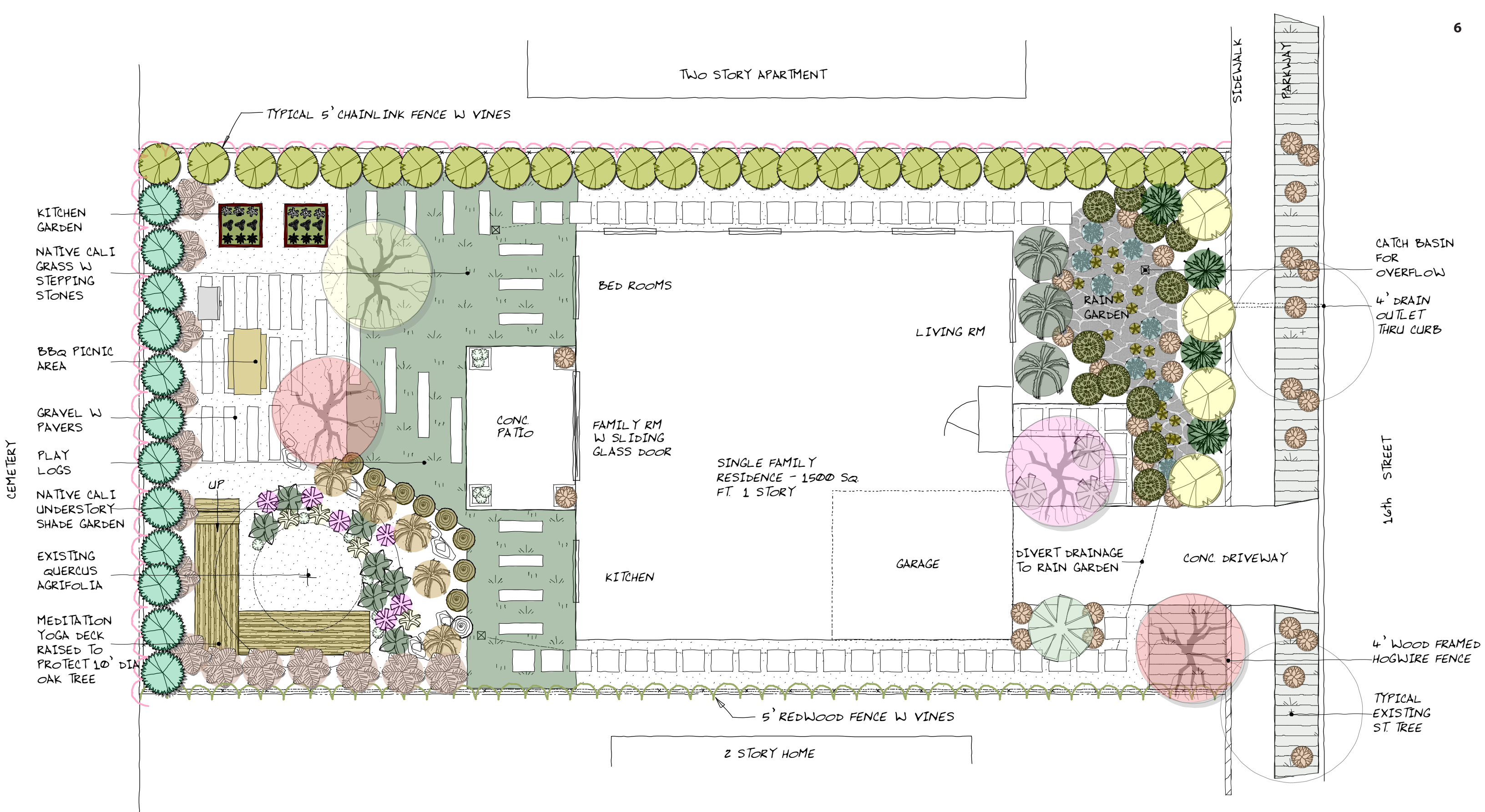


6am Summer Sunrise, Perspective View



6pm Summer Sunset, Perspective View





KITCHEN GARDEN

NATIVE CALI GRASS W STEPPING STONES

BBQ PICNIC AREA

GRAVEL W PAVERS

PLAY LOGS

NATIVE CALI UNDERSTORY SHADE GARDEN

EXISTING QUERCUS AGRIFOLIA

MEDITATION YOGA DECK RAISED TO PROTECT 10' DIA OAK TREE

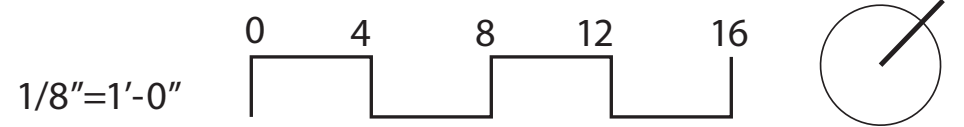
CATCH BASIN FOR OVERFLOW

4' DRAIN OUTLET THRU CURB

16th STREET

4' WOOD FRAMED HOGWIRE FENCE

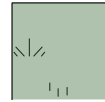
TYPICAL EXISTING ST. TREE



LAWN, SCREENING, VINES AND TREES



**Carex praegracilis**  
Clustered Field Sedge  
2-3.5 ft tall  
3.5 ft wide  
WUCOLS: L - M



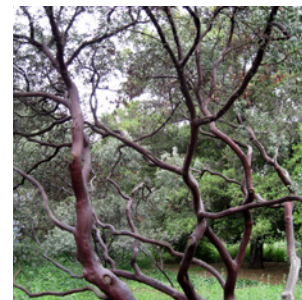
**Passiflora edulis**  
Passionfruit Vine  
Climbing  
Spreading  
WUCOLS: M



**Cercis occidentalis**  
Western Redbud  
2-3.5' tall x 3.5 ft wide  
WUCOLS: L - M



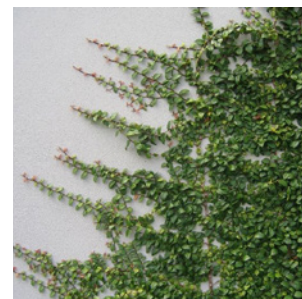
**Citrus meyeri**  
Meyer Lemon  
5-25 ft tall  
5-10 wide  
WUCOLS: M



**Common Manzanita**  
Arctostaphylos manzanita  
6 - 20 ft tall 10 ft wide  
WUCOLS: L



**Myrica californica**  
Pacific Wax Myrtle  
20-30 feet tall 10-20 feet w  
WUCOLS: L



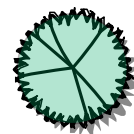
**Ficus pumila**  
Creeping Fig  
Climbing  
Spreading  
WUCOLS: M



**Abutilon palmeri**  
Palmer's Indian Mallow  
3-8 ft tall  
3-5 ft wide  
WUCOLS: L



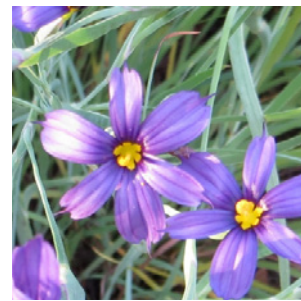
**Olea europaea**  
Little Olive  
6-8 feet tall 4-5 ft w  
WUCOLS: L



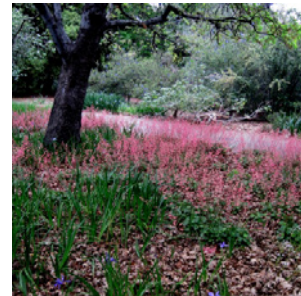
**Salvia apiana**  
White Sage  
3 - 5 ft tall  
3 - 8 ft wide  
WUCOLS: L



OAK UNDERSTORY  
SHADE GARDEN



**Sisyrinchium bellum**  
Blue-eyed grass  
3-8 ft tall 3-5 ft wide  
WUCOLS: L



**Heuchera maxima**  
Island Alum Root  
1 - 2 ft tall  
2 ft wide  
WUCOLS: L



**Solidago californica**  
California Goldenrod  
2-3.5 ft tall 3.5 ft wide  
WUCOLS: L - M



**Ribes malvaceum**  
Chaparral Currant  
5 - 8 ft tall  
5 ft wide  
WUCOLS: L



**Dudleya pulverulenta**  
Chalk Dudleya  
0.33 - 1 ft tall 1 ft w  
WUCOLS: L



RAIN GARDEN



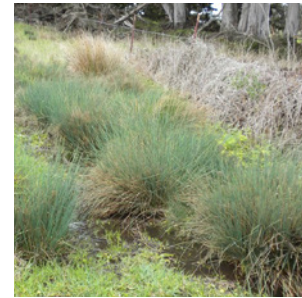
**Muhlenbergia rigens**  
Deergrass  
4 - 5 ft tall 4 ft wide  
WUCOLS: L - M



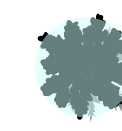
**Lepechinia fragrans**  
Fragrant Pitcher Sage  
3 - 5 ft tall 3-5 ft wide  
WUCOLS: L



**Ribes aureum**  
Golden Currant  
6 - 10 ft tall  
5 - 10 ft wide  
WUCOLS: L



**Juncus patens**  
Common Rush  
1 - 3 ft tall 3 ft wide  
WUCOLS: M-H



**Erythranthe guttata**  
Seep Monkley Flower  
2 - 5 ft tall 0.6 ft wide  
WUCOLS: M-H



**Salvia clevelandii**  
Cleveland Sage  
3 - 4.5 ft tall  
8 ft wide  
WUCOLS: L



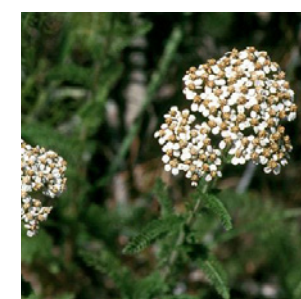
**Achillea millefolium**  
Yarrow  
2-3.5' tall 3.5 ft wide  
WUCOLS: L



PARKWAY



**Dymondia margaretae**  
Silver Carpet  
1' tall Spreading  
WUCOLS: M



**Achillea millefolium**  
Yarrow  
2-3.5' tall 3.5 ft wide  
WUCOLS: L

