

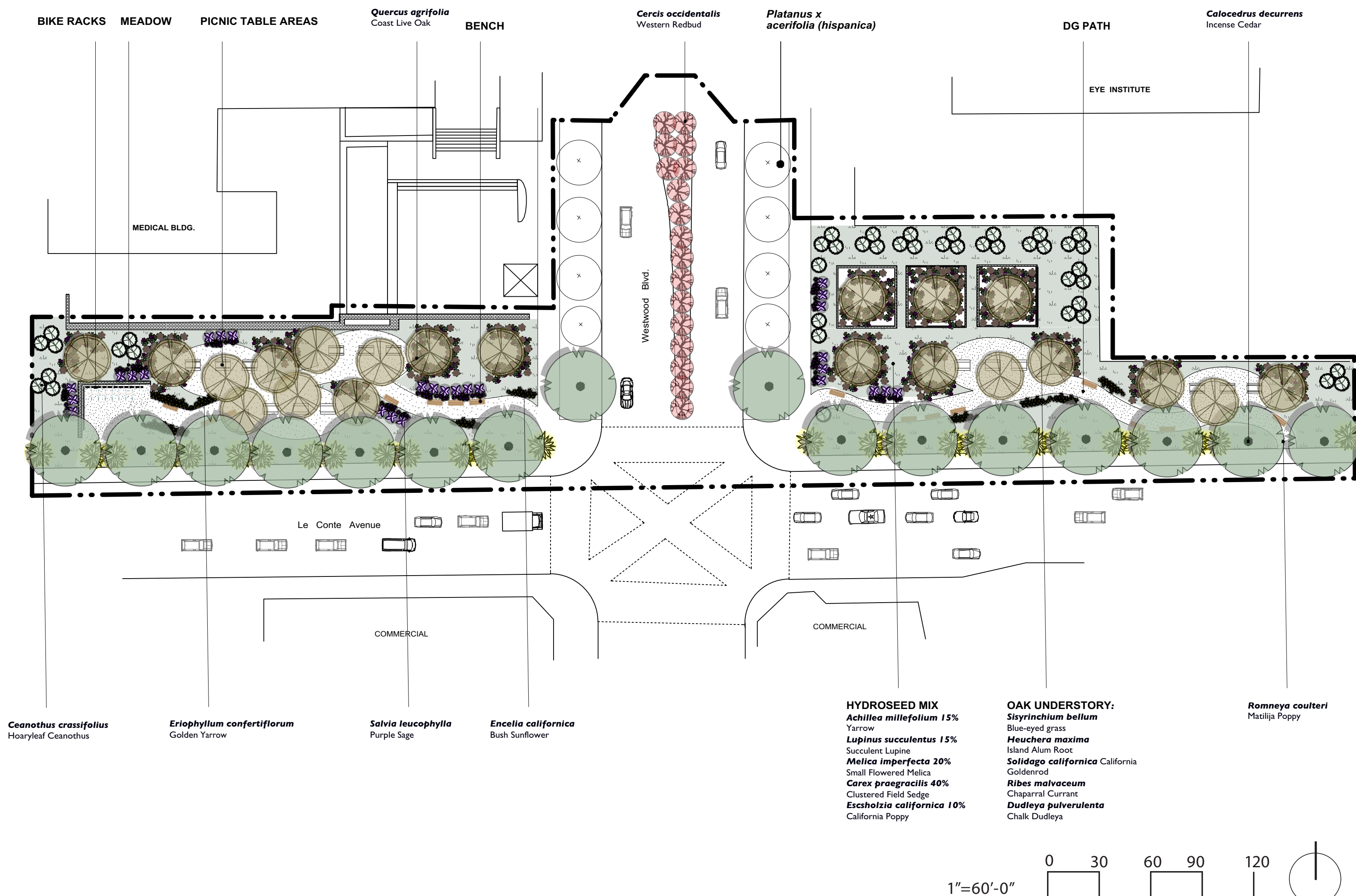
# PROJECT 3

**UCLA SOUTH ENTRY REMODEL**  
**LE CONTE AVE / WESTWOOD BLVD**  
**LOS ANGELES, CA 90024**  
**brianna gorton // ld5 // 2021**  
**stephen davis // landscape architecture**

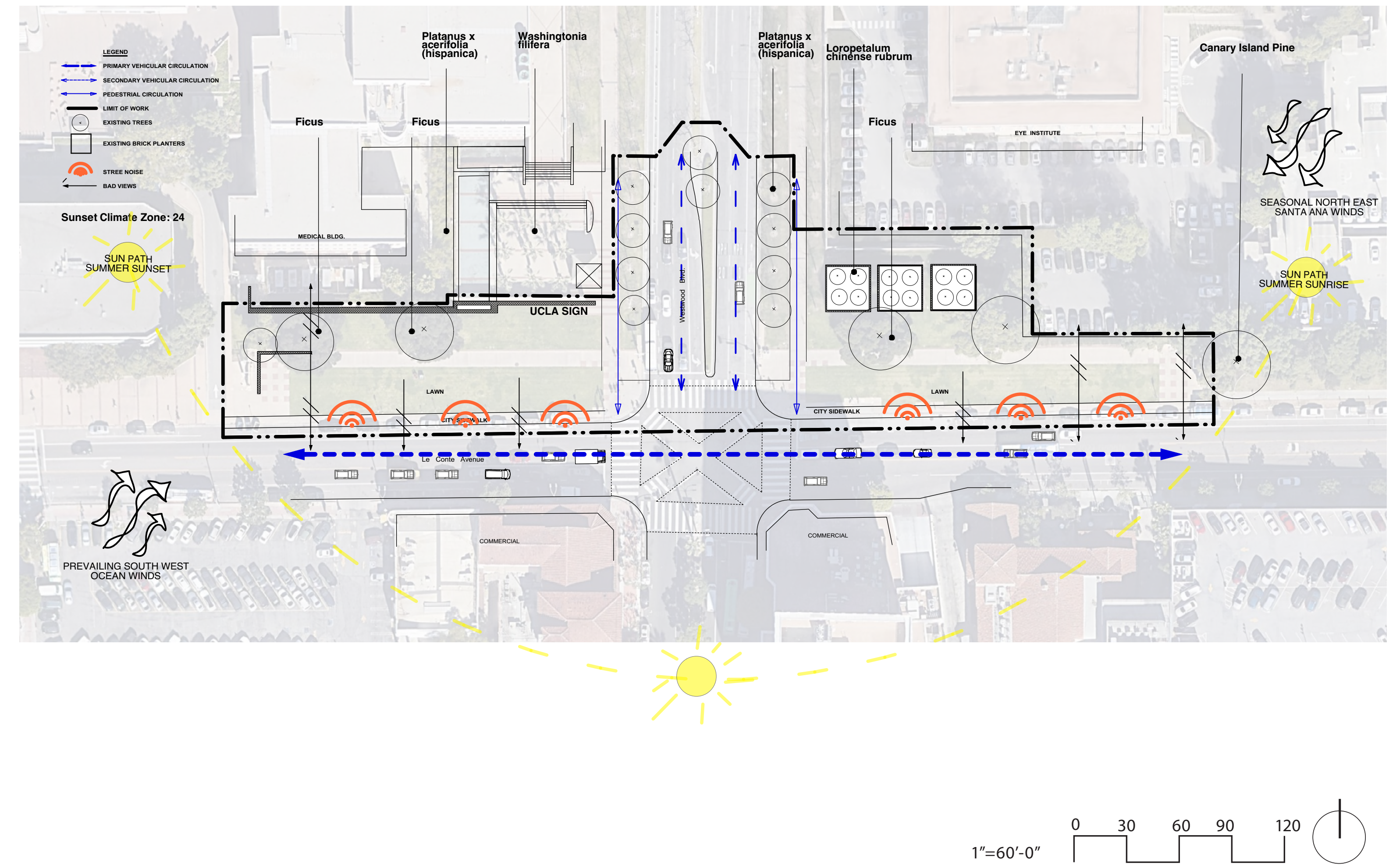
The planting design for the the UCLA South Entry Remodel is both a restoration project and a plan to create a strong entry for the main entrance to the campus. The plan includes all California native plants. The goal is to restore the area as close as possible to what would naturally be growing in the location were it not for human disturbance. These are plants that will bring back the native pollinators, birds, and animals and provide for ecological restoration throught the entire space. Soft, flowering plants, shade-providing Oak and Cedar trees have been chosen along the sidewalks and paths. There is a meadow planted by hydroseed and Oak understory plantings. The Incense Cedar connect to the existing conifers along Le Conte Ave and provide a striking line along the southern border of the space, frame the entry with a beautiful scent and sight for pedestrians and vehicles. The Redbuds provide striking seasonal interest with their pink Spring flowers, and the Romneya coulteri border and screen the space from the traffic on Le Conte. The meadow includes paths, benches, and picnic table nooks for relaxation, repose, and social gathering.



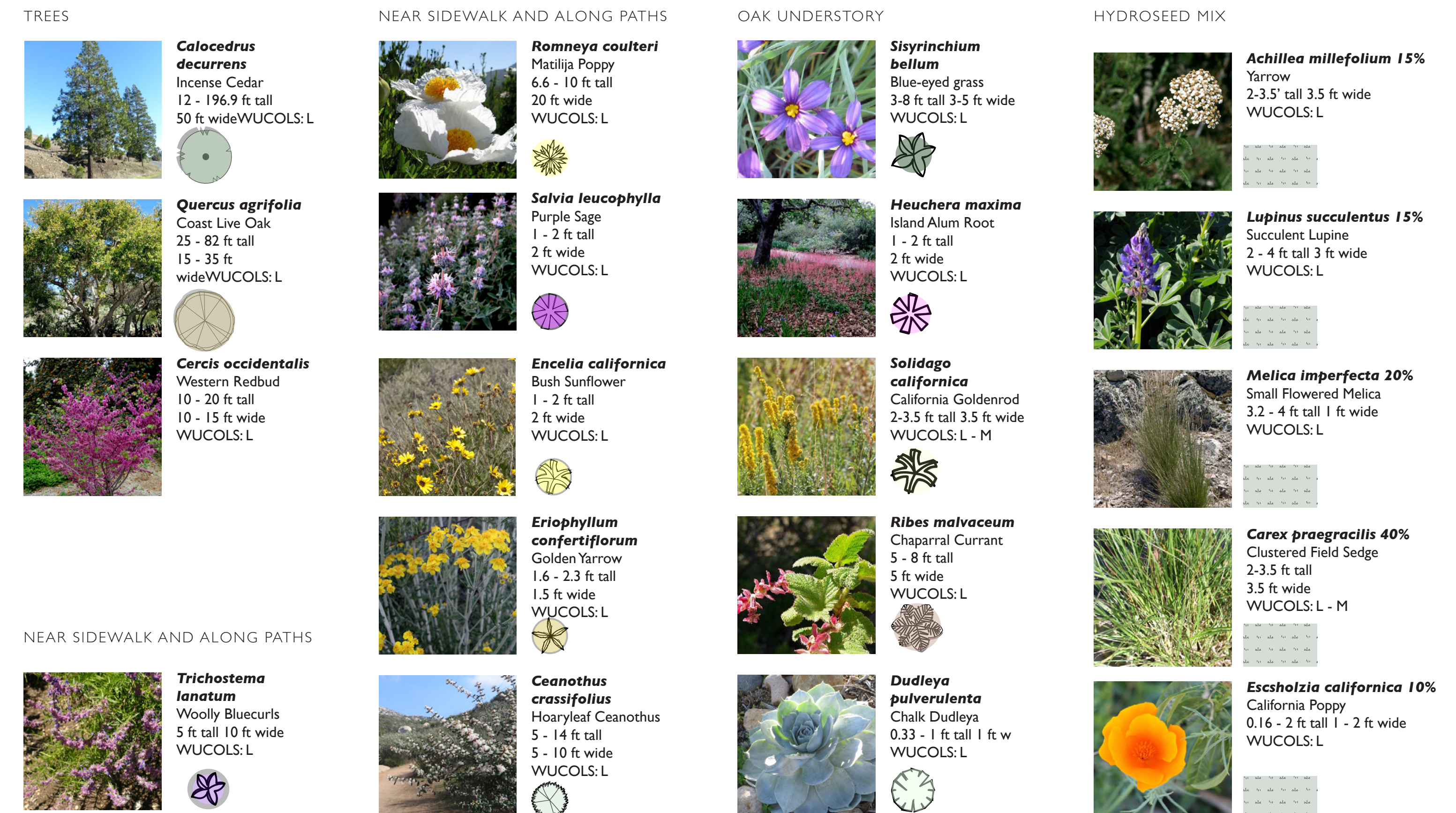
## DESIGN INTENT



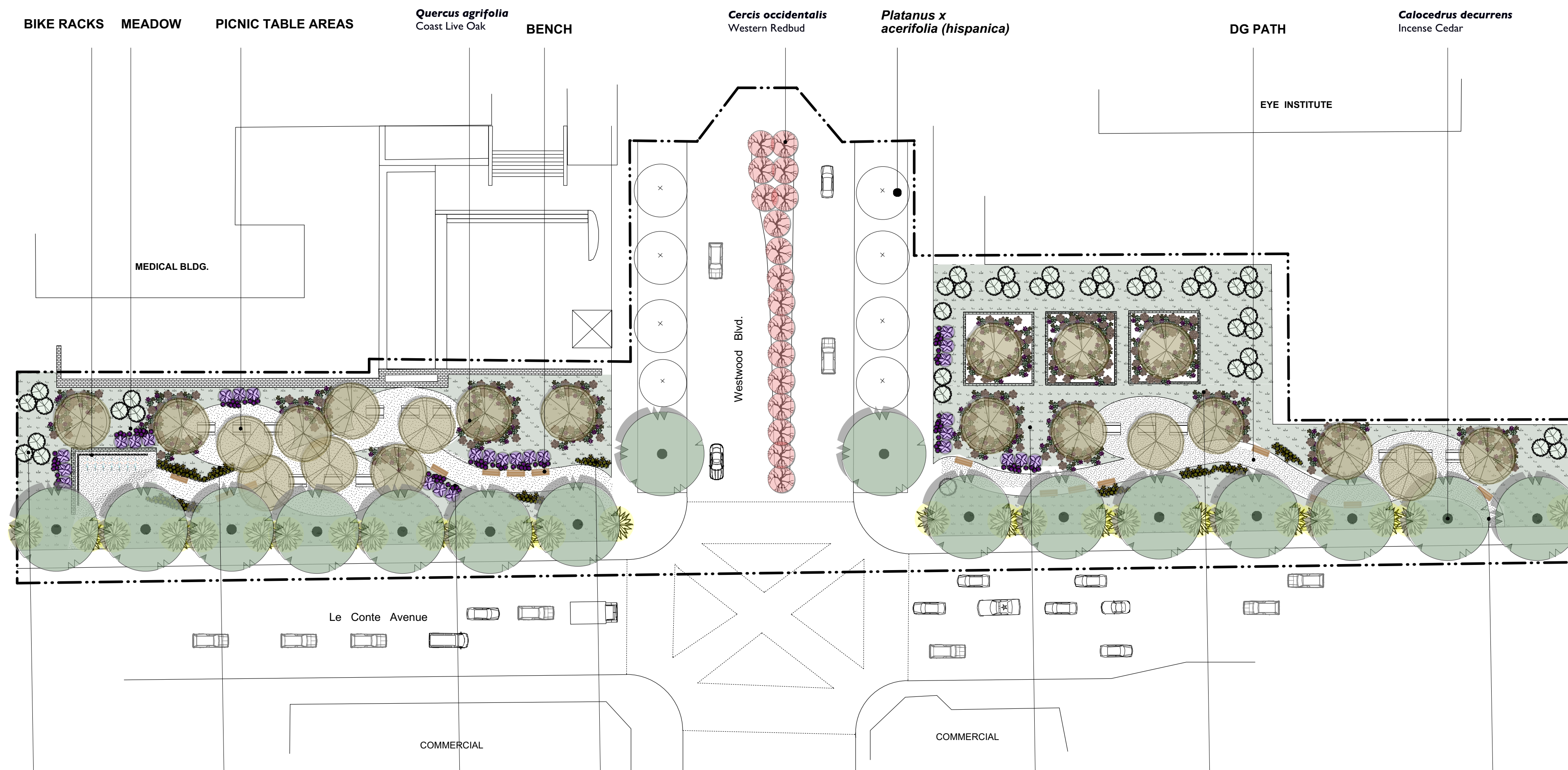
## DESIGN



## ANALYSIS DIAGRAM



## PLANT PALETTE



BIKE RACKS MEADOW PICNIC TABLE AREAS *Quercus agrifolia* Coast Live Oak BENCH *Cercis occidentalis* Western Redbud *Platanus x acerifolia (hispanica)* DG PATH *Calocedrus decurrens* Incense Cedar

*Ceanothus crassifolius* Hoaryleaf Ceanothus *Eriophyllum confertiflorum* Golden Yarrow *Salvia leucophylla* Purple Sage *Encelia californica* Bush Sunflower

- HYDROSEED MIX**  
*Achillea millefolium* 15% Tarragon  
*Lupinus succulentus* 15% Succulent Lupine  
*Melica imperfecta* 20% Small Flowered Melica  
*Carex praegracilis* 40% Clustered Field Sedge  
*Eschscholzia californica* 10% California Poppy
- OAK UNDERSTORY:**  
*Sisyrinchium bellum* Blue-eyed grass  
*Heuchera maxima* Island Alum Root  
*Solidago californica* California Goldenrod  
*Ribes malvaceum* Chaparral Currant  
*Dudleya pulverulenta* Chalk Dudleya
- Romneya coulteri* Matilija Poppy

