

An aerial photograph of a residential neighborhood. A red location pin is placed on a house, with the text "1834 16th St" next to it. The neighborhood features various houses, trees, and streets. A large white text box is overlaid on the center of the image.

1834 16th St

RESIDENTIAL PLANTING PLAN

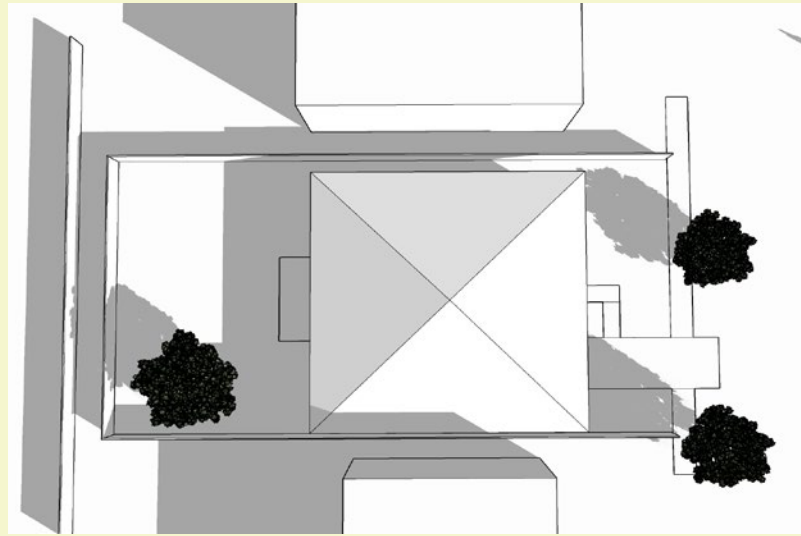
ASSIGNMENT #1

TIMOTHY HAYWARD ◦ LD5 ◦ DAVIS ◦ SPRING 2021

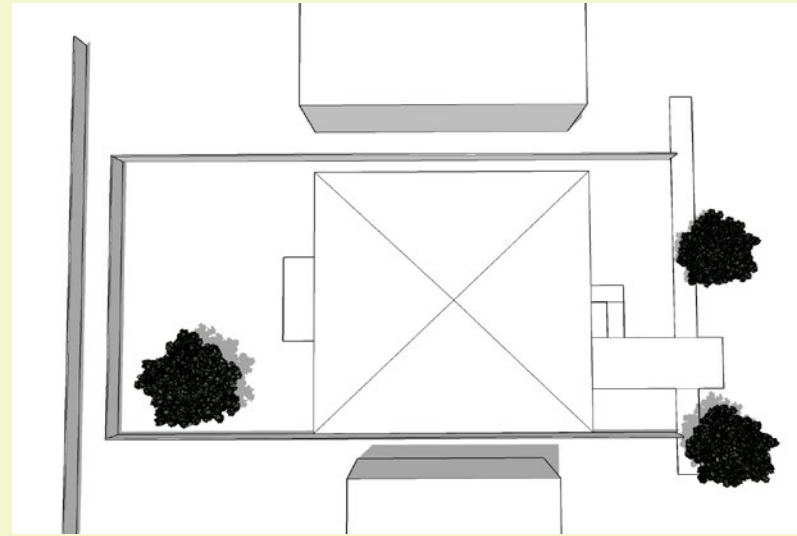
SITE ANALYSIS

SUN STUDY

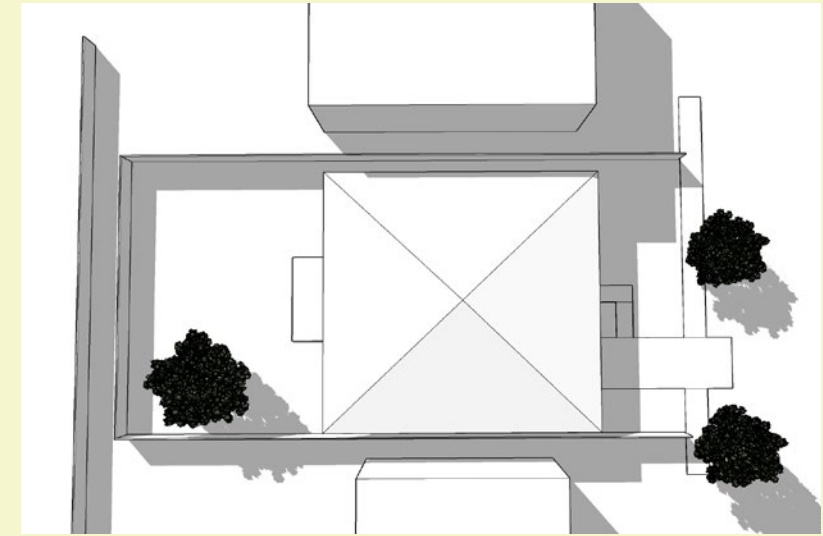
SUMMER SUN
(JUNE 20)



7 AM

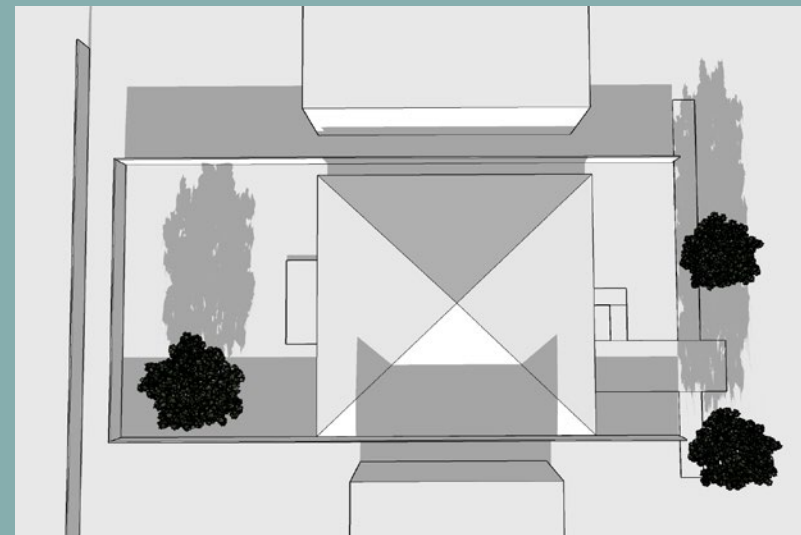


NOON

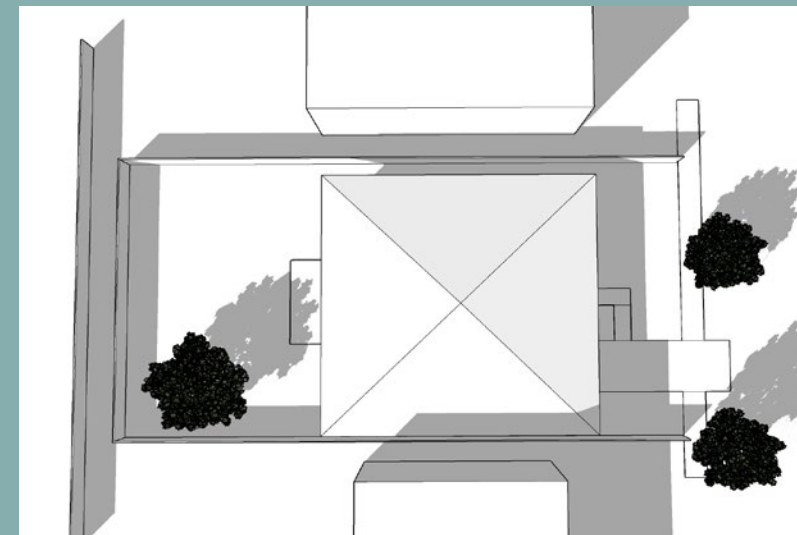


4 PM

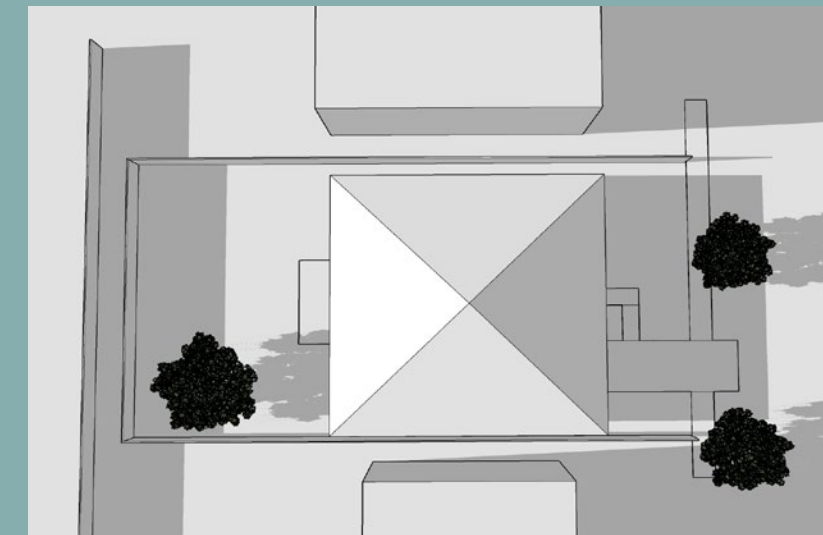
WINTER SUN
(DECEMBER 21)



9 AM



NOON



3 PM

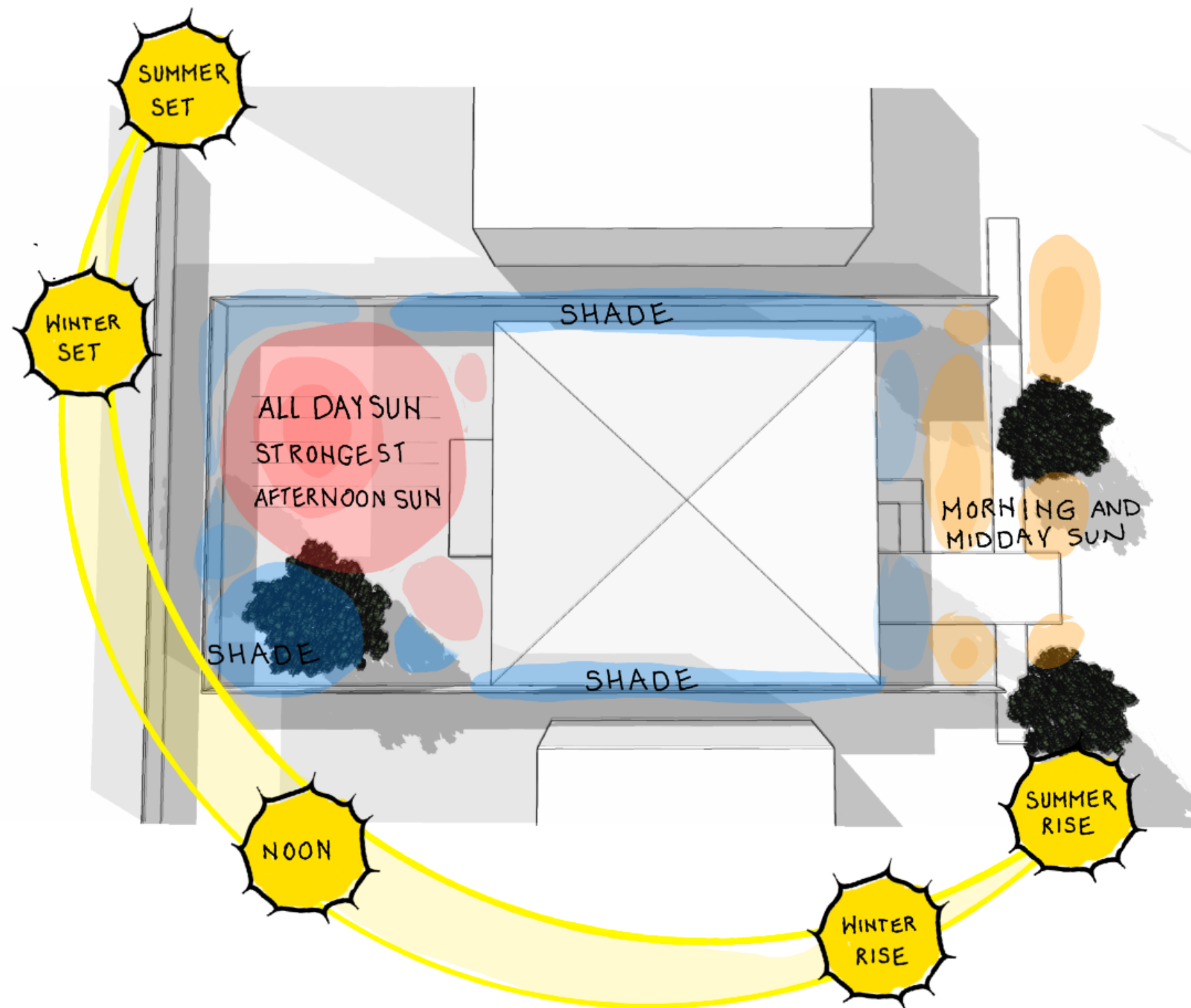


RESIDENTIAL PLANTING PLAN

TIMOTHY HAYWARD • LD5 • DAVIS • SPRING 2021

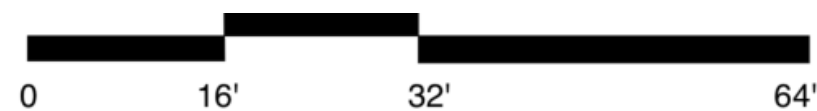
SITE ANALYSIS

SUN STUDY



- SUNSET ZONE 24
- TALLER BUILDINGS FLANK EACH SIDE OF HOME CREATING SHADE ON THE SIDE YARDS (SUN IN MIDDAY)
- MORNING SUN STRONGEST IN FRONT
- ALL DAY SUN IN BACKYARD AWAY FROM EXISTING OAK
- MID DAY SANTA MONICA SUN CREATES FAVORITE CONDITIONS THROUGHOUT THE FRONT AND BACK YARD.

SCALE: 1" = 16'



RESIDENTIAL PLANTING PLAN

TIMOTHY HAYWARD • LD5 • DAVIS • SPRING 2021

SITE ANALYSIS

APPOX. 700' AWAY FROM 10 FREEWAY

RESIDENTIAL

*SUNSET ZONE: 24
SOIL = SANDY LOAM

PREVAILING & OFFSHORE WIND

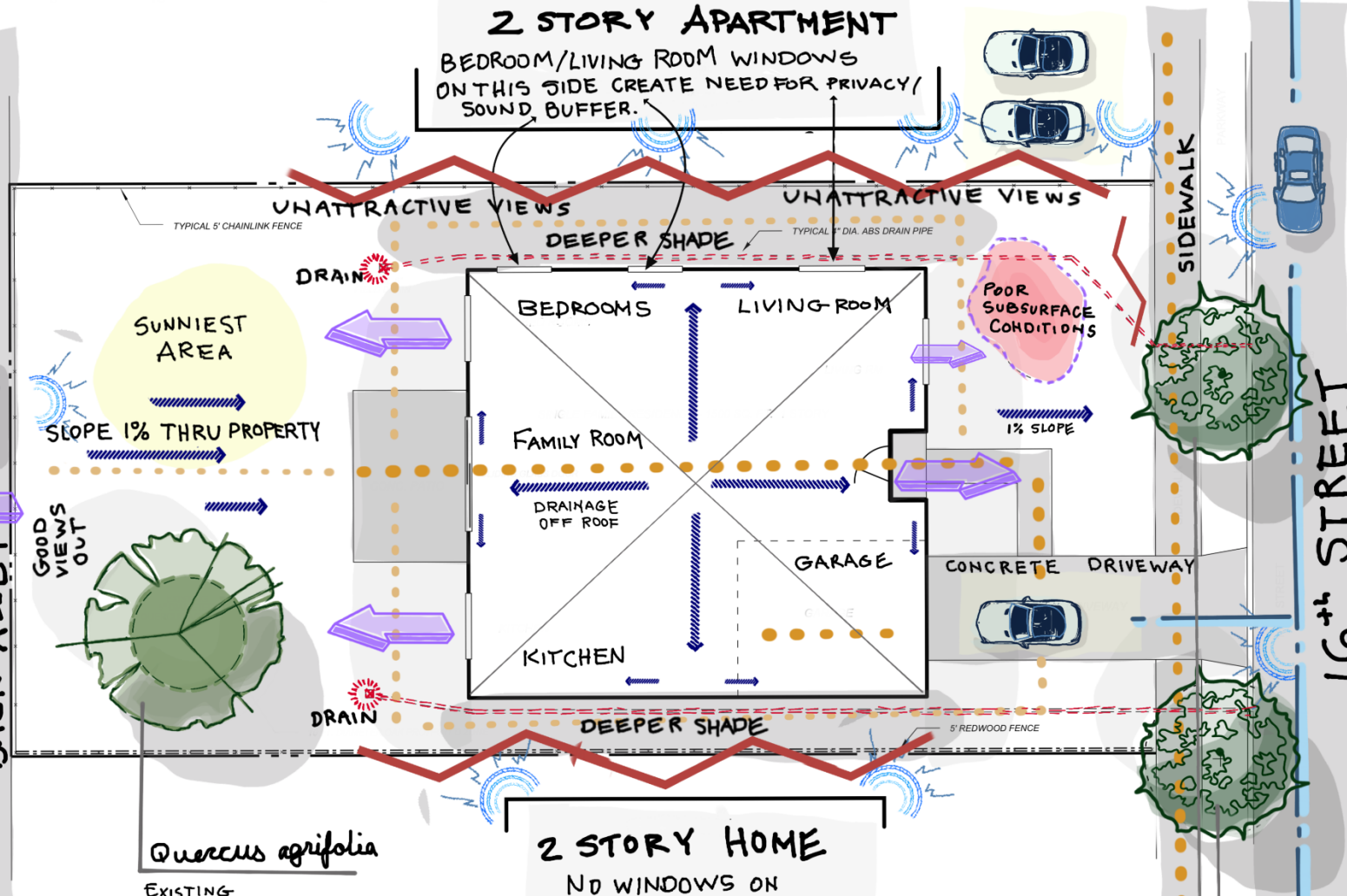
6' HIGH FENCE / HEDGE

WOODLAND CEMETERY

OPEN GREENSPACE OPPORTUNITY FOR SERENE BORROWED VIEWS AS SEEN FROM INSIDE THE YARD FROM AN ELEVATED SPOT

PACIFIC OCEAN APPROX. 1.2 MILES AWAY

BACK ALLEY



LEGEND

- PARKING
- PRIMARY VEHICULAR CIRCULATION
- SECONDARY VEHICULAR CIRCULATION
- PRIMARY PEDESTRIAN CIRCULATION
- SECONDARY PEDESTRIAN CIRCULATION
- DRAINAGE
- EXISTING OAK TREE
- EXISTING DEODAR CEDAR STREET TREES
- PREVAILING OFFSHORE WINDS
- SANTA ANA SEASONAL WINDS
- BURIED CONSTRUCTION DEBRIS = POOR SUBSURFACE CONDITIONS
- FIELD DRAIN W/ 4" DIA ABS PIPE LEADING OUT TO STREET
- SOUND/ PRIVACY BUFFER CONSIDERATIONS
- NOISE TO BUFFER / CONSIDER
- DESIRABLE VIEWS TO CONSIDER

RESIDENTIAL

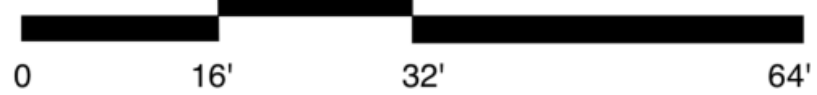
SEASONAL SANTA ANA WINDS

Quercus agrifolia
EXISTING COAST LIVE OAK GROW 20-60' 5' RADIUS FROM TRUNK PROTECTED FROM PLANTING *EXCELLENT NATIVE WITH HABITAT VALUE

2 STORY HOME
NO WINDOWS ON THIS SIDE. LESS PRIVACY CONCERNS BUT BUFFER STILL NEEDED

Cedrus deodara
DEODAR CEDAR (2) EXISTING STREET TREES APPROX 25' TALL CAN GROW 40-60'

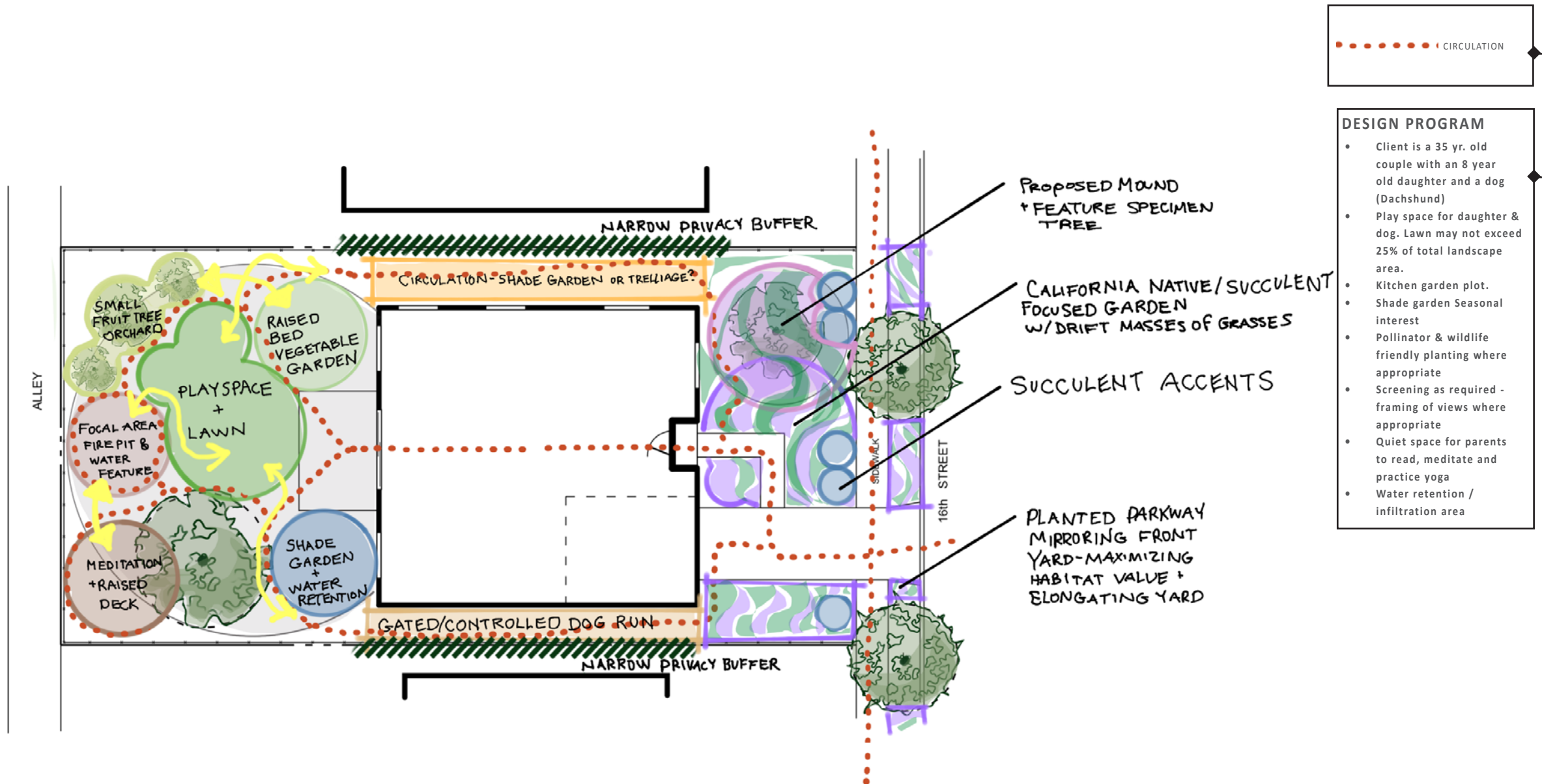
SCALE: 1" = 16'



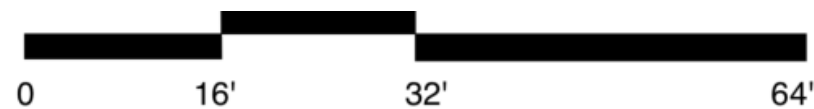
RESIDENTIAL PLANTING PLAN

TIMOTHY HAYWARD • LD5 • DAVIS • SPRING 2021

AREA USE DIAGRAM



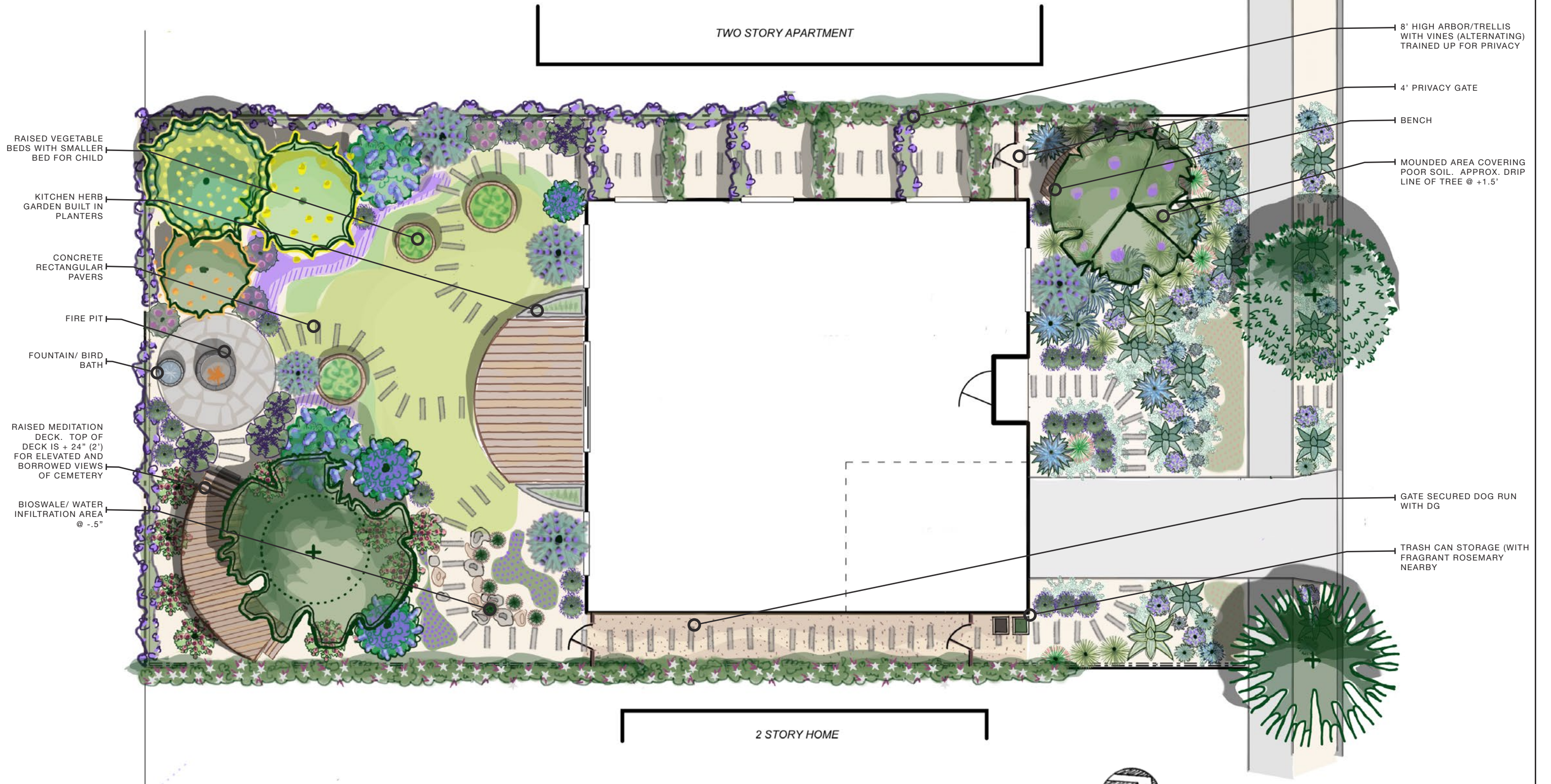
SCALE: 1" = 16'



RESIDENTIAL PLANTING PLAN

TIMOTHY HAYWARD • LD5 • DAVIS • SPRING 2021

NEW FEATURES



SCALE: 1"=8'

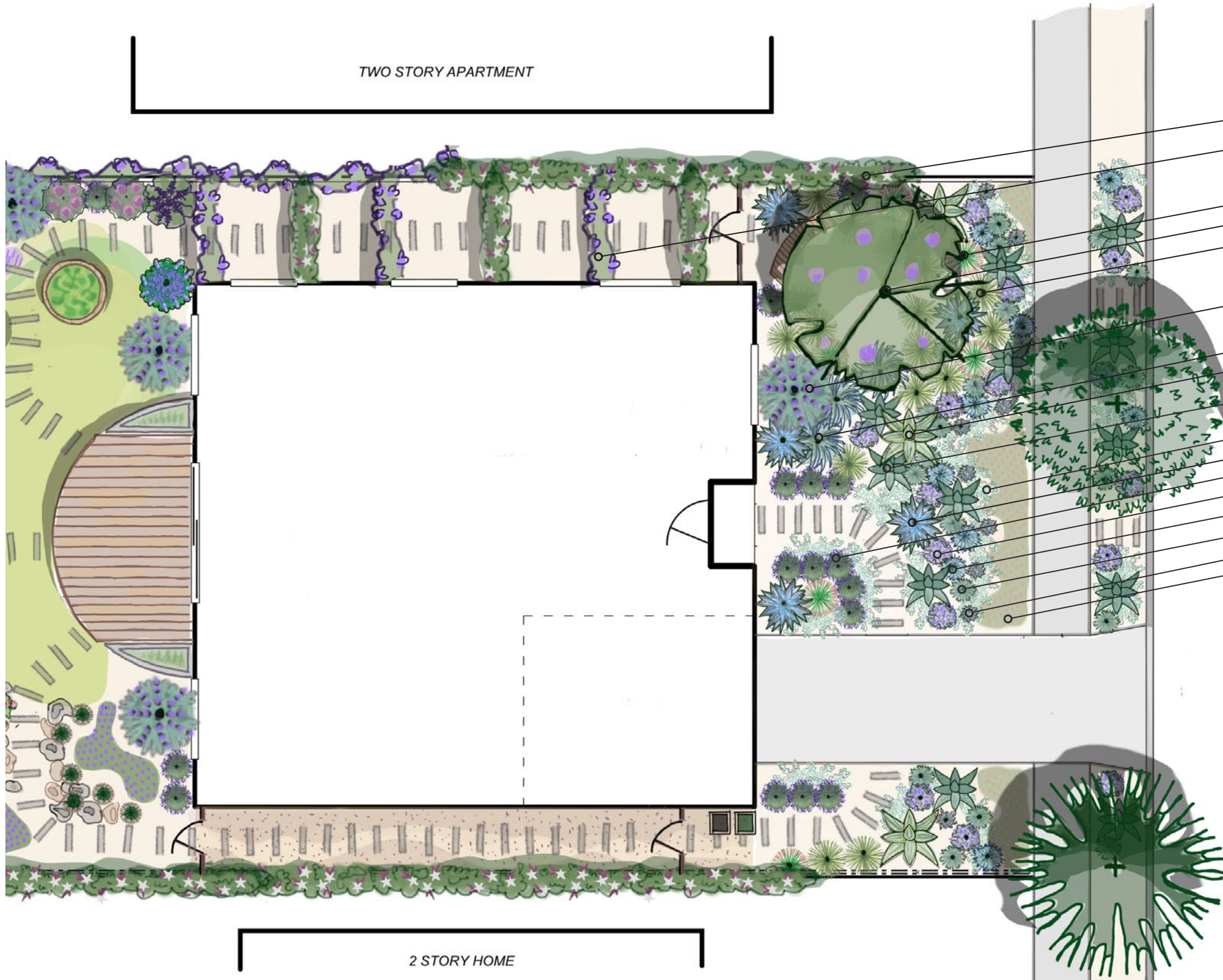


RESIDENTIAL PLANTING PLAN

TIMOTHY HAYWARD • LD5 • DAVIS • SPRING 2021

FRONT AND SIDE PLANTING PLAN

TWO STORY APARTMENT



2 STORY HOME

SCALE: 1"=8'



- JASMINUM POLYANTHUM
- THUNBERGIA GRANDIFLORA VINE
- PENNISETUM SETACEUM 'RUBRUM'
- CHILOPSIS LINEARIS
- MUHLENBERGIA DUBIA
- SALVIA 'BEE'S BLISS'
- LEYMUS CONDENSATUS 'CANYON PRINCE'
- AGAVE DESMETTIANA 'VARIEGATA'
- AGAVE ATTENUATA "BOUTIN BLUE"
- SENECIO MANDRALISCAE
- HESPEROYUCCA WHIPPLEI
- ROSMARINUS OFFICINALIS 'TUSCAN BLUE'
- LAVANDULA ANGUSTIFOLIA 'HIDCOTE'
- HELICTOTRICHON SEMPERVIRENS
- FESTUCA CALIFORNICA 'ELIJAH BLUE'
- DUDLEYA PULVERULENTA
- CORETHROGYNE FILAGINIFOLIA (GROUND COVER)

DESIGN NARRATIVE:

A DRIFTY CALIFORNIA NATIVE-FOCUSED FRONT YARD WITH A COOL BLUE GREEN AND PURPLE CONTROLLED COLOR PALETTE THAT VIBRATES WITH ENERGY.

ATTEMPT IS MADE TO KEEP THE COLORS SOFT AND CALM- BLUES AND GREENS WITH PURPLE BEING THE STAR COLOR AND UNIFIER THROUGHOUT THE FRONT. THE GRASSES, SUCCULENTS AND PLANT NATIVES OFFER A PLETHORA OF BENEFITS BOTH AESTHETIC AND FUNCTIONAL. CONTRAST, THE ELEMENT OF MOTION AND SOUND, HABITAT RESTORATION AND VISUAL INTEREST.

THE GRASSES OFFER A FULLNESS FOR YEAR LONG INTEREST, ARE RELATIVELY LOW MAINTENANCE, AND DROUGHT TOLERANT. MUCH CAN ALSO BE SAID OF THE SUCCULENTS. THE DISTINCTIVE SHAPES, COOL COLOR PALETTE AND SYMMETRY OF THE SUCCULENTS OFFER A VISUALLY STRIKING "REEF" THAT CUTS STRAIGHT THROUGH THIS FRONT LAWN. SUCCULENT PLANTS LEND THEMSELVES TO PATTERN PLANTING DUE TO THE REGULARITY OF THEIR GROWTH HABITS AND FORMS AND THE MORE REPETITION THE BETTER. COMPANION PLANTING INTO THE PARKWAY MAXIMIZES THE HABITAT VALUE AND LENGTHENS THE FRONT YARD, CREATING THE ILLUSION THE YARD IS BIGGER THAN IT IS. FINALLY THIS AREA'S PLANTING WERE ALSO CHOSEN FOR THE HABITAT VALUE, WITH MANY OPPORTUNITIES FOR THE CLIENTS AND THEIR CHILD TO INTERACT WITH THE BIRDS, BEES, AND BUTTERFLIES THAT THESE PLANTS WILL ATTRACT.




RESIDENTIAL PLANTING PLAN

TIMOTHY HAYWARD • LD5 • DAVIS • SPRING 2021

FRONT YARD PLANT PALETTE

TREE


Chilopsis linearis
Desert Willow



Height: 15 ft. - 30 ft. (rarely)
Width: 15 ft. - 20 ft.
Wucols: VL

SIDE YARD VINE


Jasminum polyanthum
Pink Jasmine



Twining vine
Wucols: M

SIDE YARD VINE


Thunbergia grandiflora
Blue Trumpet Vine



Twining Vine
Wucols: M

ACCENT GRASS


Pennisetum setaceum 'Rubrum'
Purple Fountain Grass



Height: 3-5'
Width: 2-4'
Wucols: L

WARM SEASON GRASS

Muhlenbergia dubia
Pine Muhly



Height: 2-3'
Width: clumping
Wucols: L

WARM SEASON GRASS

Leymus condensatus
'Canyon Prince' Giant Wild Rye



Height: 2-3'
Width: Running
Wucols: L

COOL SEASON GRASS


Helictotrichon sempervirens
Blue Oats Grass



Height: 1-2'
Width: 1-2'
Wucols: L

COOL SEASON GRASS


Festuca californica 'ElijahBlue'
Blue Fescue



Height: <1'
Width: 1-2'
Wucols: L

ACCENT SUCCULENT

Salvia 'Bee's Bliss'
Bees Bliss Sage



Height: 1-2'
Width: 6-8'
Wucols: L

ACCENT SUCCULENT

Agave desmettiana 'Variegata'
Variegated Smooth Agave



Height: 5-6'
Width: 5-6'
Wucols: L

ACCENT SUCCULENT

Agave attenuata 'Boutin Blue'
Blue Foxtail Agave



Height: 3-4'
Width: 3-4'
Wucols: L

GROUNDCOVER SUCCULENT

Senecio mandraliscae
Blue Chalksticks



Height: 1-2'
Width: spreading
Wucols: L

ACCENT SUCCULENT

Hesperoyucca whipplei
Our Lords Candle



Height: 2-3'
Width: 3-4'
Wucols: VL

ACCENT SUCCULENT


Rosmarinus officinalis 'Tuscan blue'
Upright Rosemary



Height: 4-6'
Width: 4-5'
Wucols: L

ACCENT SUCCULENT

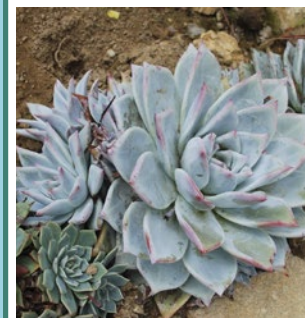
Lavandula angustifolia 'hidcote'
Lavender



Height: 1-2'
Width: 1-2'
Wucols: L

ACCENT SUCCULENT

Dudleya pulverulenta
Chalk Dudleya



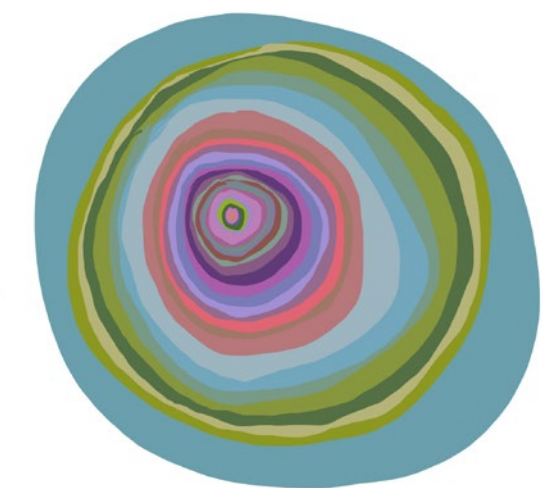
Height: 1-2'
Width: 1-2'
Wucols: L

GROUNDCOVER

Corethrogyne filaginifolia
Silver Carpet



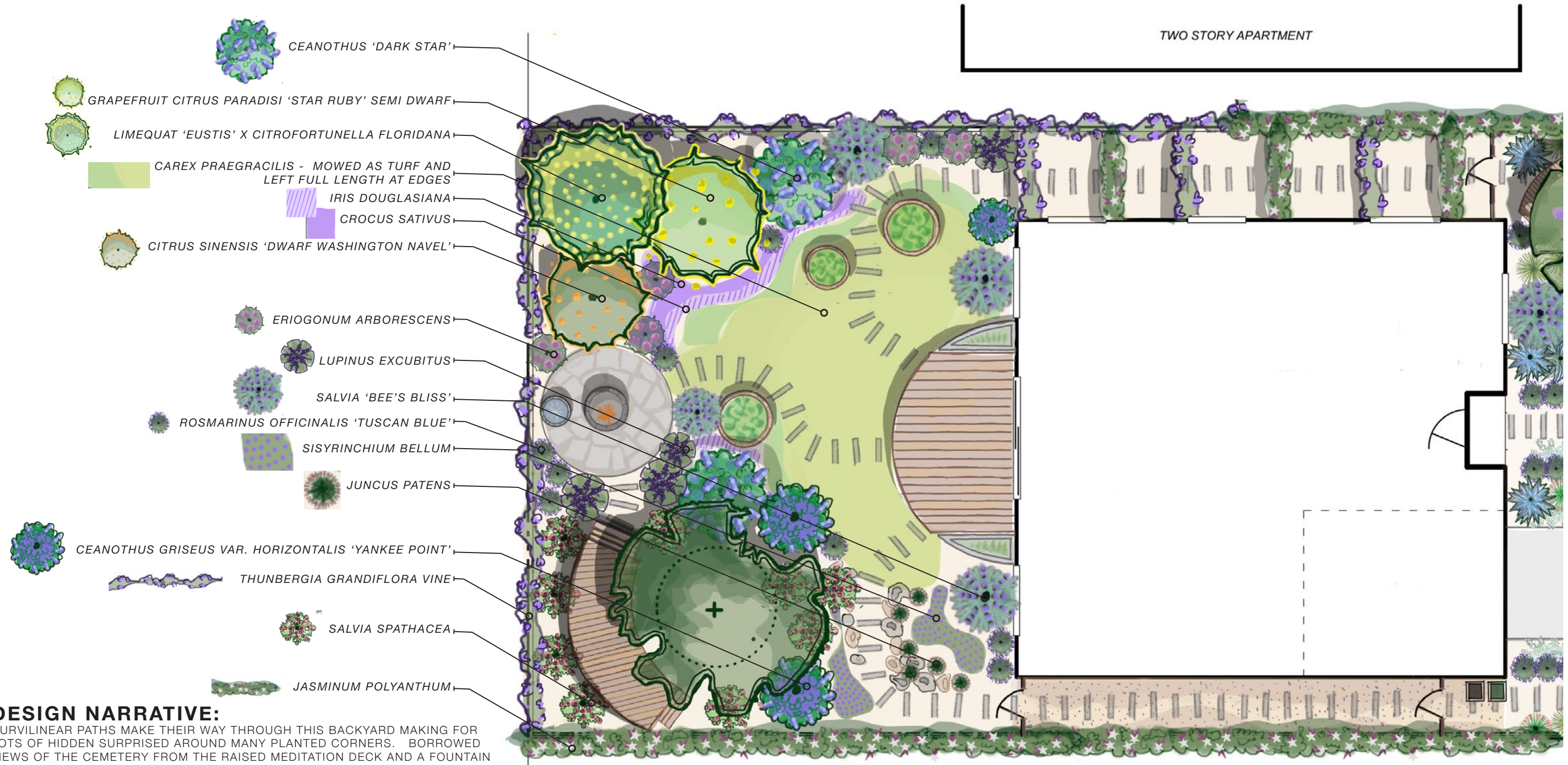
Height: 1-3'
Width: Groundcover
Wucols: L



RESIDENTIAL PLANTING PLAN

TIMOTHY HAYWARD • LD5 • DAVIS • SPRING 2021

BACK YARD PLANTING PLAN



DESIGN NARRATIVE:

CURVILINEAR PATHS MAKE THEIR WAY THROUGH THIS BACKYARD MAKING FOR LOTS OF HIDDEN SURPRISES AROUND MANY PLANTED CORNERS. BORROWED VIEWS OF THE CEMETERY FROM THE RAISED MEDITATION DECK AND A FOUNTAIN AND WATER FEATURE ON THIS BACK SIDE ARE BROKEN UP BY A TURF AREA AND PORCH THAT MAKE THIS BACKYARD FEEL BIGGER THAN IT REALLY IS WITH MANY DIFFERENT AREAS AND ZONES.

THE IDEA AND THEME WITH THE SELECTION OF PLANTS ARE THAT THEY ARE CHOSEN FOR THEIR BOLD COLOR (WITH PURPLE AGAIN BE THE VIP) THAT DOESN'T COMPROMISE THE PRIMARY GOAL OF BEING A WILDLIFE-FRIENDLY GARDEN. A PLACE FOR PLANTS, WILDLIFE, AND PEOPLE TO LIVE IN HARMONY.

POLLINATORS ARE PART OF THE INTRICATE WEB THAT SUPPORTS THE BIOLOGICAL DIVERSITY IN NATURAL ECOSYSTEMS THAT HELPS SUSTAIN OUR QUALITY OF LIFE, SO CARE WAS MADE IN SELECTIONS THAT PROVIDE HABITATS AND FOOD/WATER FOR BENEFICIAL INSECTS, BEES, BUTTERFLIES, MOTHS, HUMMINGBIRDS AND OTHER SONGBIRDS. ALONG WITH A KITCHEN AND HERB GARDEN, THIS BACKYARD IS SURE TO MAKE A NATURE LOVER OUT OF THEIR YOUNG 8 YEAR OLD CHILD.

SCALE: 1"=8'



2 STORY HOME

RESIDENTIAL PLANTING PLAN

TIMOTHY HAYWARD • LD5 • DAVIS • SPRING 2021

BACKYARD PLANT PALETTE

TREE

Citrus paradisi 'Star Ruby'
Semi Dwarf (Grapefruit)



Height: 10-15
Width: 15 ft. - 20 ft.
Wucols: M-H

TREE


Citrus sinensis 'Dwarf
Washington Navel'



Height: 6-8'
Width: 6-8'
Wucols: M-H


TREE

Limequat 'Eustis' X
Citrofortunella




Height: 6-8'
Width: 6-10'
Wucols: M-H

Salvia 'Bee's Bliss'
Bees's Bliss Sage



Height: 1-2'
Width: 6-8'
Wucols: L

Ceanothus 'dark star'
California Lilac



Height: 5-6'
Width: 8-10'
Wucols: L

Ceanothus griseus var.
horizontalis 'Yankee Point'



Height: 3'
Width: 5-8'
Wucols: L


GRASS/ TURF

Carex praeegracilis
mowed as
turf and left full length at edges



Height: >1
Spreading
Wucols: M-L

Iris douglasiana
Douglas Iris



Height: 12-18"
Width: 1-2' clumping.
Wucols: M

Crocus sativus
Saffron Crocus



Height: 4"
Width: 4"
Wucols: M

Lupinus excubitus
Grape soda lupine



Height: 2-3'
Width: 4'
Wucols: L

WATER INFILTRATION AREA

Sisyrinchium bellum
Blue- Eyed Grass



Height: 3"-2'
Width: 4"-2'
Wucols: M-H

WATER INFILTRATION AREA

Juncus patens
California grey rush



Height: 1-2'
Width: 1-2'
Wucols: M-H

Salvia spathacea
Hummingbird Sage




Height: 1-3'
Width: 3-5'
Wucols: L

Rosmarinus officinalis



Height: 4-6'
Width: 4-5'
Wucols: L

Eriogonum arborescens
Santa Cruz Island Buckwheat



Height: 3-4'
Width: 5-6'.
Wucols: L

SIDE YARD VINE


Thunbergia grandiflora
BLUE TRUMPET VINE



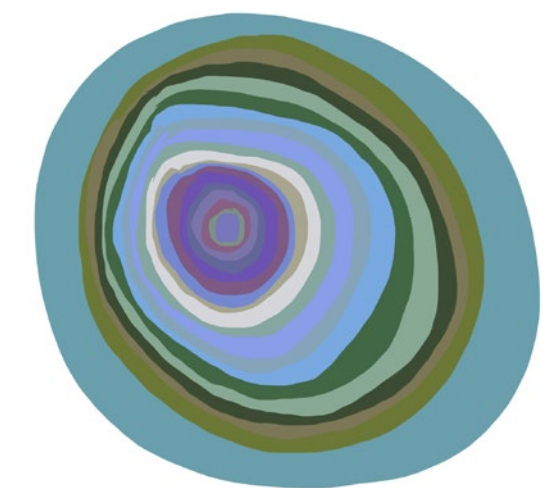
Twining Vine
Wucols: M

SIDE YARD VINE

Jasminum polyanthum
Pink Jasmine



Twining Vine
Wucols: M

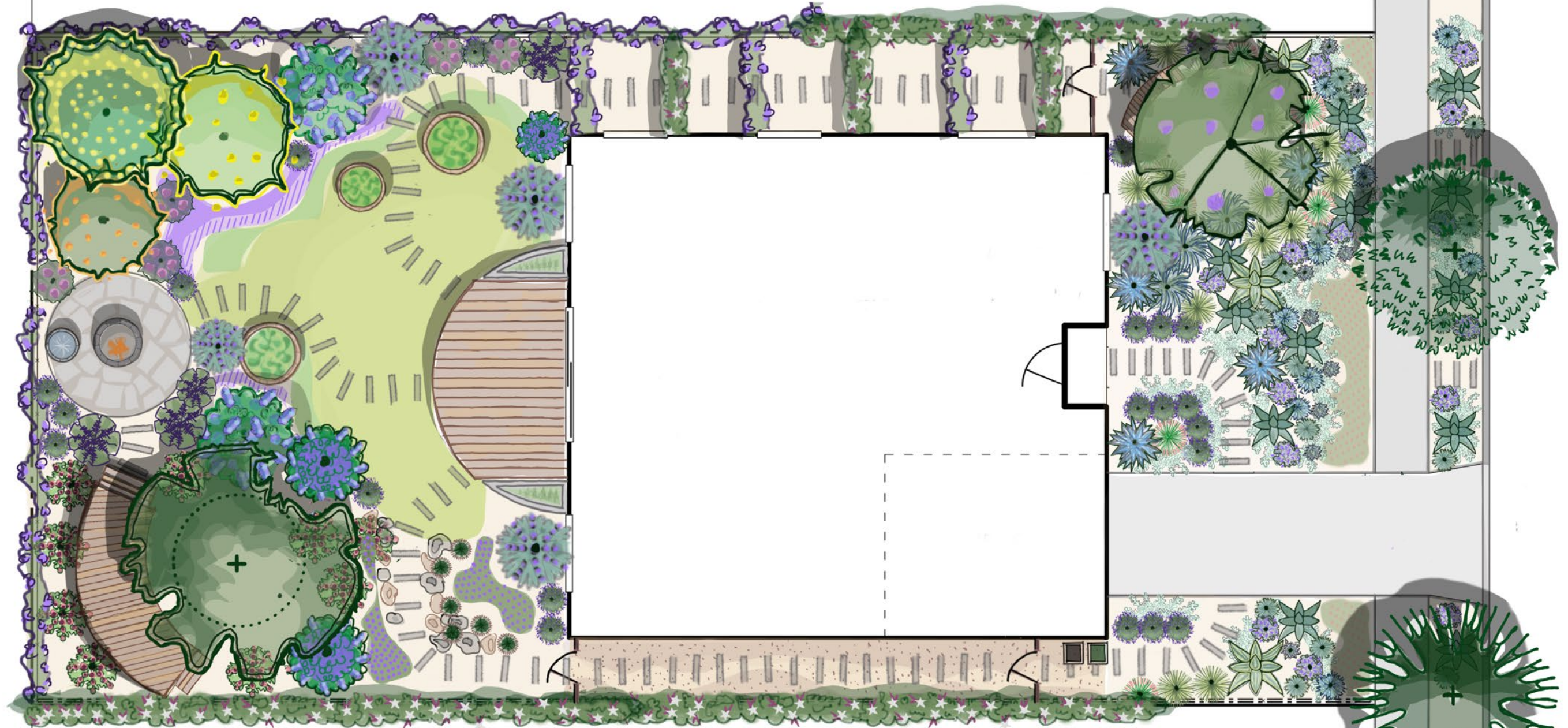


RESIDENTIAL PLANTING PLAN

TIMOTHY HAYWARD • LD5 • DAVIS • SPRING 2021

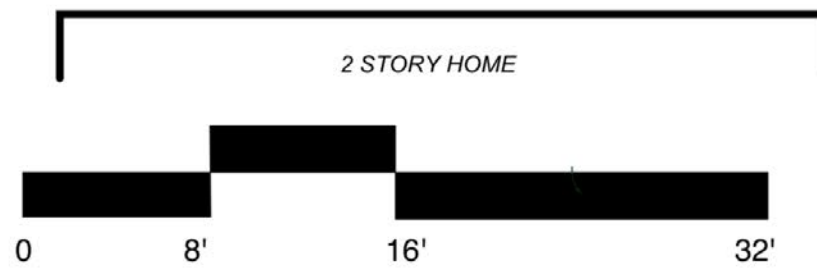
THANK YOU!

TWO STORY APARTMENT



2 STORY HOME

SCALE: 1"=8'



RESIDENTIAL PLANTING PLAN

TIMOTHY HAYWARD • LD5 • DAVIS • SPRING 2021