

34°12'17"N 118°53'54"W



W Janss Rd

Lynnmore Dr

SLOPE PLANTING PLAN

ASSIGNMENT #2

TIMOTHY HAYWARD ◦ LD5 ◦ DAVIS ◦ SPRING 2021

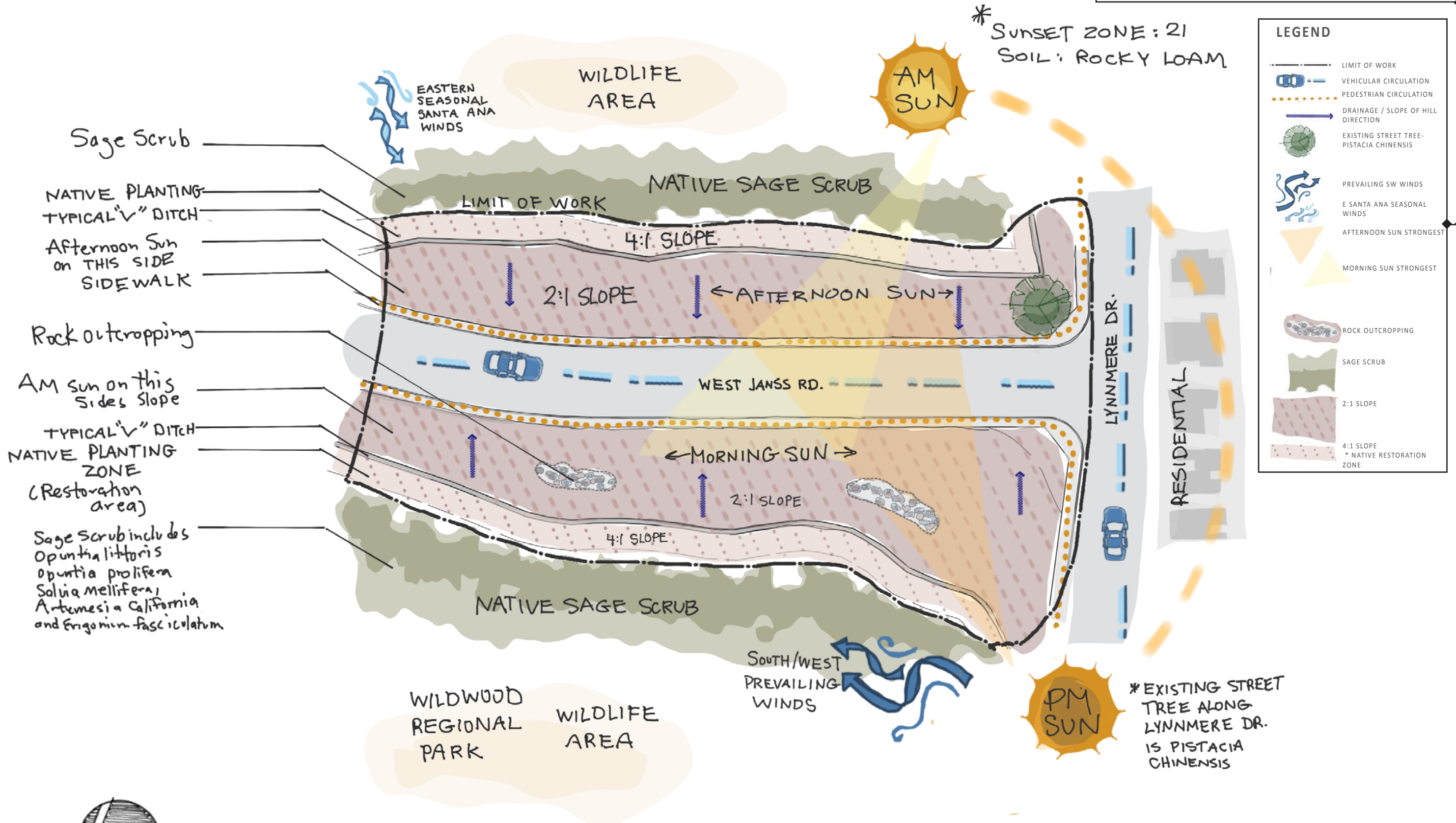


M



M

SITE ANALYSIS



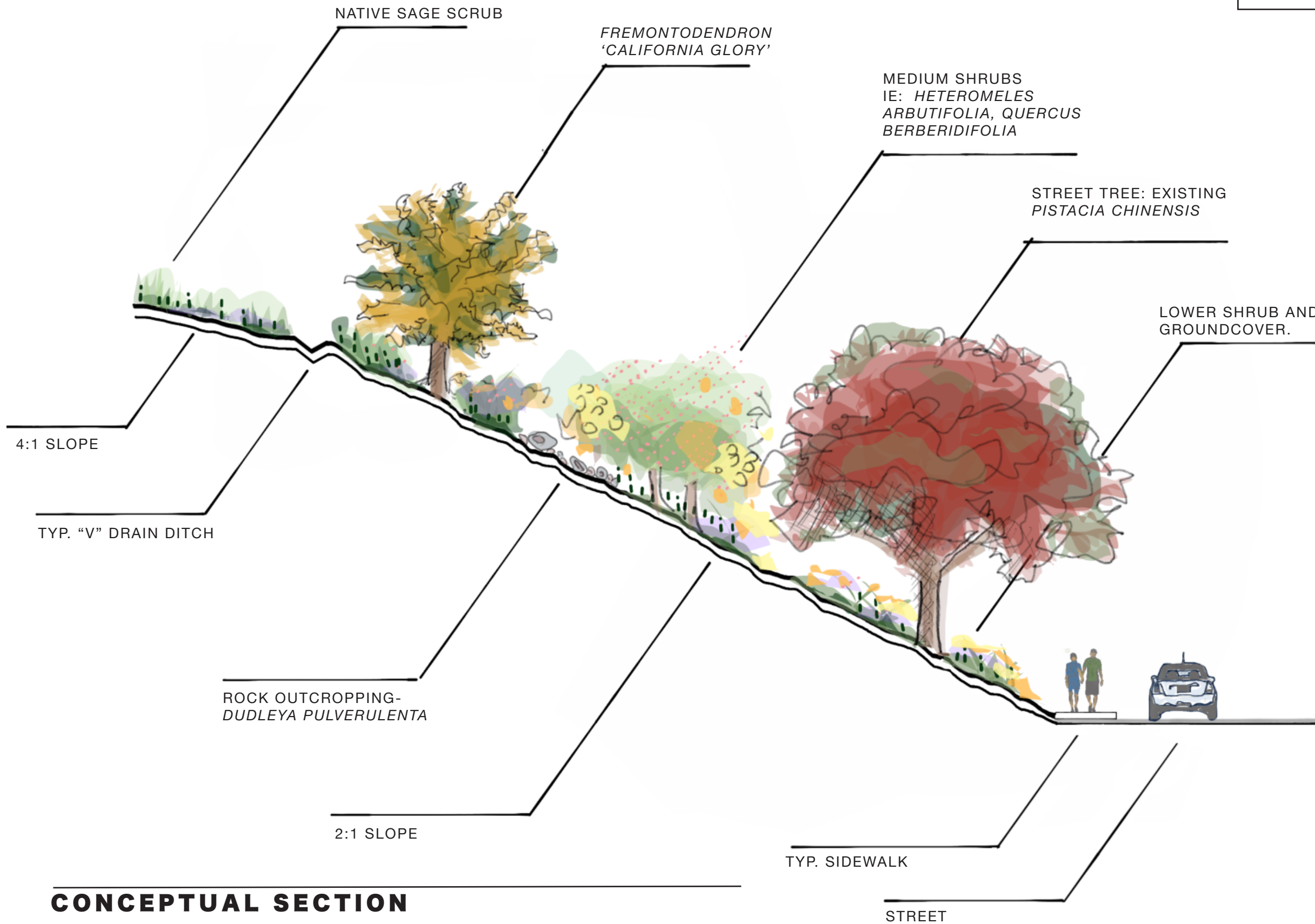
SCALE: 1" = 60'



SLOPE PLANTING PLAN

TIMOTHY HAYWARD • LD5 • DAVIS • SPRING 2021

DESIGN CONCEPT



GOLD IN THEM THAR HILLS (but it's for the birds).

The main goal of this planting design is to restore the natural sage scrub on the top of the hill disturbed by heavy construction, stabilize the disturbed slope, maximize wildlife value and provide a pleasing environment for the people, cars and bikers passing by.

The previous construction area at the top of the slope has been stripped bare so for immediate coverage a hydroseed mix from the Conejo Valley coastal sage scrub community is used as well as native cactus shrubs for the benefit of the endangered Cactus Wren.

The native sage scrub hydroseed continues halfway down the hill before transitioning to a more diverse mix with flowering perennials and local grasses and plenty of golden and yellow color mixed with pops of purple that vibrate with energy. Both hydromixes were chosen for maximizing habitat value, specifically for the birds.

I've heard of a study that said people like songbirds more than benches or water features in the landscape- How do you get songbirds? Songbirds eat insects. If you want songbirds you need insects, and if you want insects, you need native! - An integral component of the design is the ever changing motion and sound of insects, birds and animals spied by and observant passerby of this restored hillside.

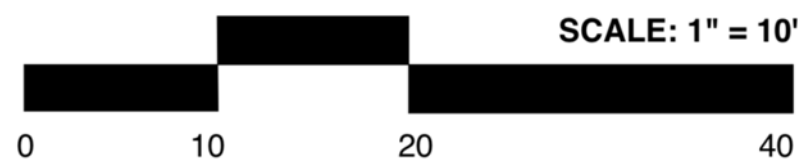
The tree layer and lower shrubs as well as the ground cover continue to be native options chosen for the suitability for hillside planting with diverse root depths for good restoration and stabilization with the danger of rapid erosion.

The one non native plant in the palette is the Chinese Pistache which is an existing street tree so it keeps in synergy with the neighborhood, but also because of its bold color and deciduous fall seasonality.

The trees and shrubs chosen were on the shorter side to mimic natural hillside scrub, and while planting appears random and natural, open view corridors with lower grouping of plants are seen throughout. When possible the taller shrubs will be grouped together vertically up the hillside, drawing the eyes to the top and natural restored hillside.

Finally, when possible the palette leans toward orange, yellow and golden hues in a nod to the Golden State. The plants chosen offer four seasons of color, native flavor and a mosaic of textures reflecting the natural beauty of the Conejo Valley.

CONCEPTUAL SECTION



SLOPE PLANTING PLAN

TIMOTHY HAYWARD • LD5 • DAVIS • SPRING 2021

**CONCEPTUAL PLAN:
TREES AND HYDROMIX**

FREMONTODENDRON 'CALIFORNIA GLORY'

PISTACIA CHINENSIS

HETEROMELES ARBUTIFOLIA

SAMBUCUS MEXICANA

WEST JANSS ROAD

LYNNMERE DRIVE

HYDROMIX #2
LOWER SLOPE
SCRUB AND
FLOWERING MIX

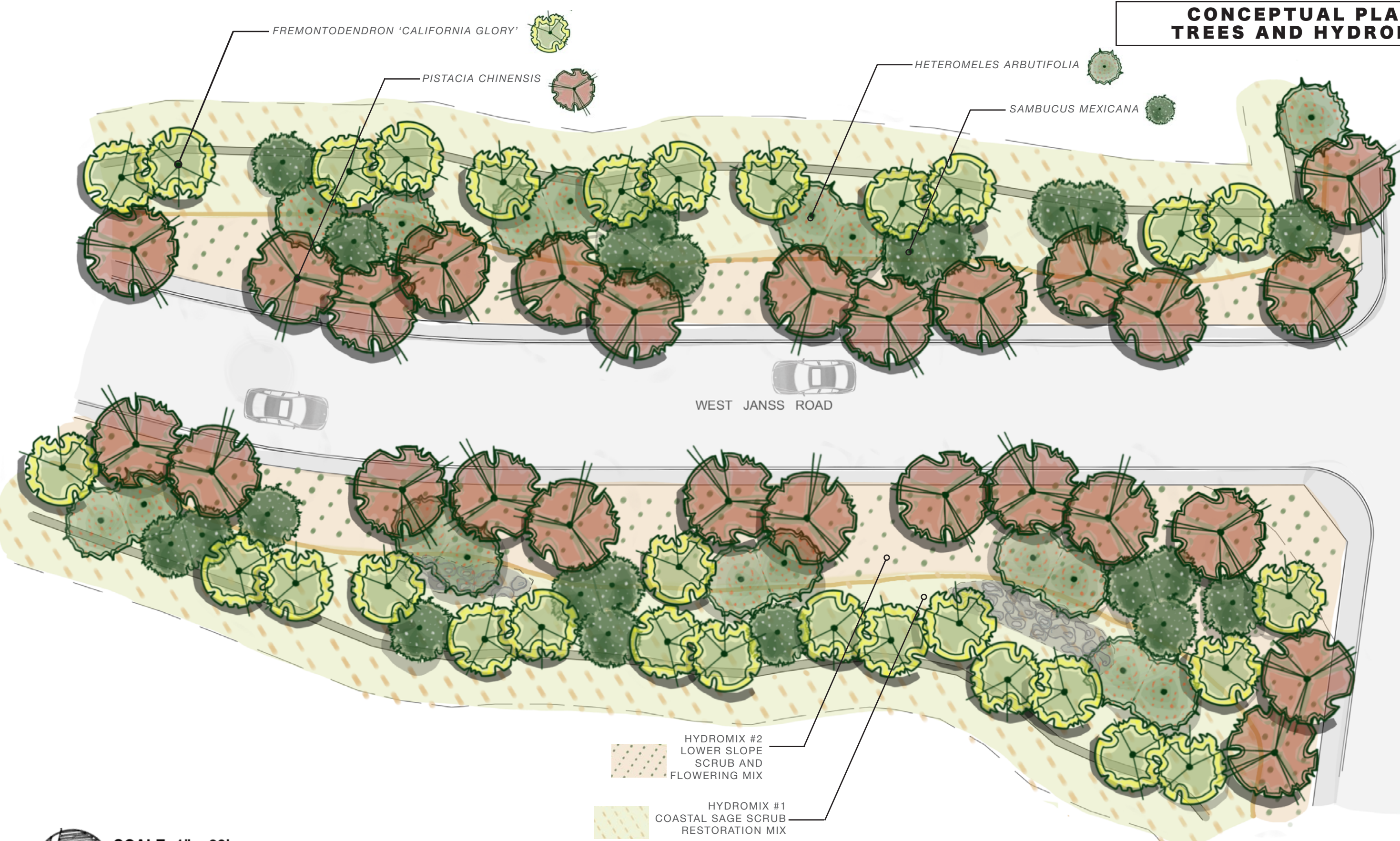
HYDROMIX #1
COASTAL SAGE SCRUB
RESTORATION MIX

SLOPE PLANTING PLAN

TIMOTHY HAYWARD • LD5 • DAVIS • SPRING 2021



SCALE: 1" = 30'



**CONCEPTUAL PLAN:
SHRUBS AND LOWER GROUNDCOVER**



OPUNTIA PROLIFERA

OPUNTIA LITTORALIS

HESPEROYUCCA WHIPPLEI

ENCELIA CALIFORNICA

QUERCUS
BERBERIDIFOLIA
(Q. DUMOSA)

SALVIA LEUCOPHYLLA

SALVIA APIANA

ABUTILON PALMER

WEST JANS
ROAD

LYNNMERE DRIVE

DUDLEYA PULVERULENTA

DUDLEYA LANCEOLATA

MUHLENBERGIA RIGENS

LEYMUS CONDENSATUS

LOTUS SCOPARIUS

ERIOGONUM UMBELLATUM POLYANTHUM

SOLIDAGO CALIFORNICA

ACHILLEA X 'MOONSHINE'

SLOPE PLANTING PLAN

TIMOTHY HAYWARD • LD5 • DAVIS • SPRING 2021

PLANT PALETTE

COASTAL SAGE SCRUB MIX



Artemisia californica
California sagebrush
Amount- 20%
2-3' H x 2-3' W
Wucols: VL

Eschscholzia californica
California poppy
Amount- 10%
1' H x 1-2' W
Wucols: VL/L



Eriogonum fasciculatum
California buckwheat
Amount- 20%
3-5' H x 2-6' W
Wucols: VL/L

Stipa pulchra
Purple needlegrass
Amount- 30%
3.3' H x 1.5' W
Wucols: VL/L



Salvia mellifera
Black sage
Amount- 20%
4' H x 6' W
Wucols: VL

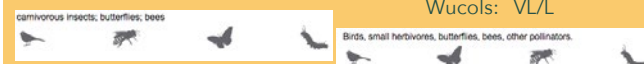


HYDROMIX #2 STREET MID/ SLOPE MIX



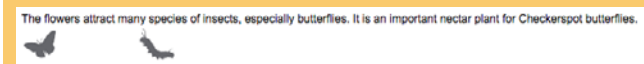
Achillea millefolium
white yarrow
Amount- 20%
1-3' H x 2' W
Wucols: VL

Eschscholzia californica
California poppy
Amount- 15%
1' H x 1-2' W
Wucols: VL/L



Layia platyglossa
Tidy tips
Amount- 10%
2-3' H x 2-3' W
Wucols: VL

Festuca idahoensis
Idaho fescue
Amount- 30%
2-3' H x 2-3' W
Wucols: VL

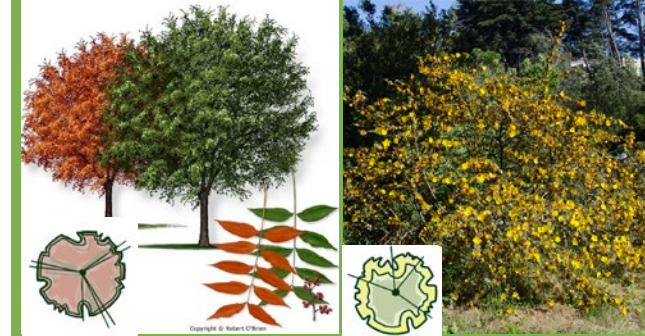


Linum lewisii
Blue flax
Amount- 10%
2-3' H x 2-3' W
Wucols: VL

Lupinus nanus
sky lupine
Amount- 15%
2-3' H x 2-3' W
Wucols: VL



TREES/ LARGE SHRUBS



Pistacia chinensis
Chinese pistache
25'-35' H x 25'-35' W
Wucols: M

Fremontodendron 'California Glory'
Flannel Bush
10-20' H x 10-20' W
Wucols: L

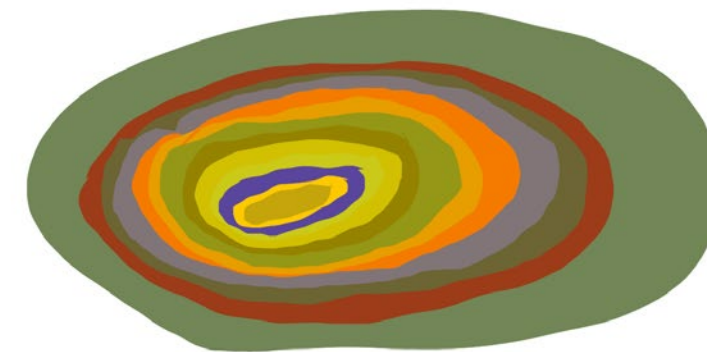


Sambucus mexicana
Mexican Elder
15-20' H x 15' W
Wucols: L

Heteromeles arbutifolia
Toyon
15-20' H x 15'-20' W
Wucols: L



SAGE SCRUB IS AN ENTIRE ECOSYSTEM THAT NOT ONLY INCLUDES A WIDE VARIETY OF PLANTS (INCLUDING *OPUNTIA LITTORALIS* AND *OPUNTIA PROLIFERA* (AKA CYLINDROPUNTIA) COMBINED WITH *SALVIA MELLIFERA*, *ARTEMISIA CALIFORNICA* AND *ERIOGONUM FASCICULATUM*), BUT ALSO INSECTS, MAMMALS, AND BIRDS MANY OF WHICH ARE VERY RARE, INCLUDING THE **CACTUS WREN**, *CAMPYLORHYNCHUS BRUNNEICAPILLUS*.



SLOPE PLANTING PLAN

PLANT PALETTE

TALL TO MEDIUM HEIGHT SHRUB



Hesperoyucca whipplei
Our Lords candle
3-10 H x 5 W
Wucols: VL

Attracts the Yucca Moth, which co-evolved with this plant. Also attracts California Thrashers.



Quercus berberidifolia
(*Q. dumosa*)
Scrub oak
6-8 H x 6-8 W
Wucols: VL/L

Numerous birds, mammals, reptiles and insects. Many insects are attracted to Oaks.



Salvia apiana
White sage
3 H x 3-5 W
Wucols: VL



Salvia leucophylla
Purple sage
5' H x 6-8' W
Wucols: VL/L

Hummingbirds, insects, esp. carpenter bees and bumble bees



Abutilon palmer
Indian Mallow
4-5' H x 4-5' W
Wucols: VL

Butterflies (White Checkered-Skipper) other pollinators



Encelia californica
Bush/ Coast sunflower
3-4' H x 3-6' W
Wucols: L

Numerous insects are attracted to the flowers, including butterflies and bees. Small birds such as goldfinches are attracted to the seed heads.

SMALL SHRUB/ PERENNIAL/ GRASS / GROUND



Eriogonum umbellatum polyanthum
Sulphur buckwheat
1-3' H x 2-4' W
Wucols: VL/L

carnivorous insects, butterflies, bees



Muhlenbergia rigens
Deer Grass
2-4' H x 4-6' W
Wucols: VL

Seed eating birds will be attracted to it in summer



Lotus scoparius
Deerweed
3' H x 3' W
Wucols: V

An important pollinator plant, it is host plant to Bramble Hairstreak



Achillea x 'Moonshine'
Yarrow 'Moonshine'
1-2' H x 1-2' W
Wucols: L/M

carnivorous insects, butterflies, bees



Leymus condensatus 'Canyon Prince'
Giant ryegrass
4-5' H x 3' W

Seeds eaten by mammals and birds.



Solidago californica
California goldenrod
1' H x 2' W
Wucols: L/M

Numerous insects are attracted to the flowers

NATIVE CACTUS SAGE SCRUB



Opuntia prolifera
Coast Cholla
8-10 H x 1-5 W
Wucols: VL



Opuntia littoralis
Coast Cholla
8-10 H x 1-5 W
Wucols: VL

Hummingbirds

SUCCULENT FOR NATURAL ROCK OUTCROPPING

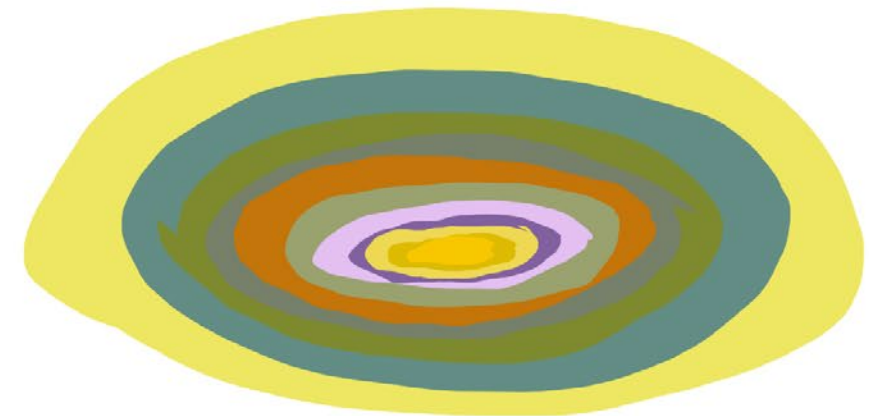


Dudleya lanceolata
Lance-leaved live-forever
1' H x 1' W
Wucols: VL/L



Dudleya pulverulenta
Chalk dudleya
1' H x 1' W
Wucols: VL/L

Hummingbirds



SLOPE PLANTING PLAN

TIMOTHY HAYWARD • LD5 • DAVIS • SPRING 2021

ALL TOGETHER NOW



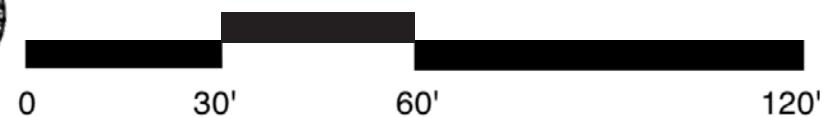
WEST JANSS ROAD

THANK YOU!

LYNNMERE DRIVE



SCALE: 1" = 30'



SLOPE PLANTING PLAN

TIMOTHY HAYWARD • LD5 • DAVIS • SPRING 2021