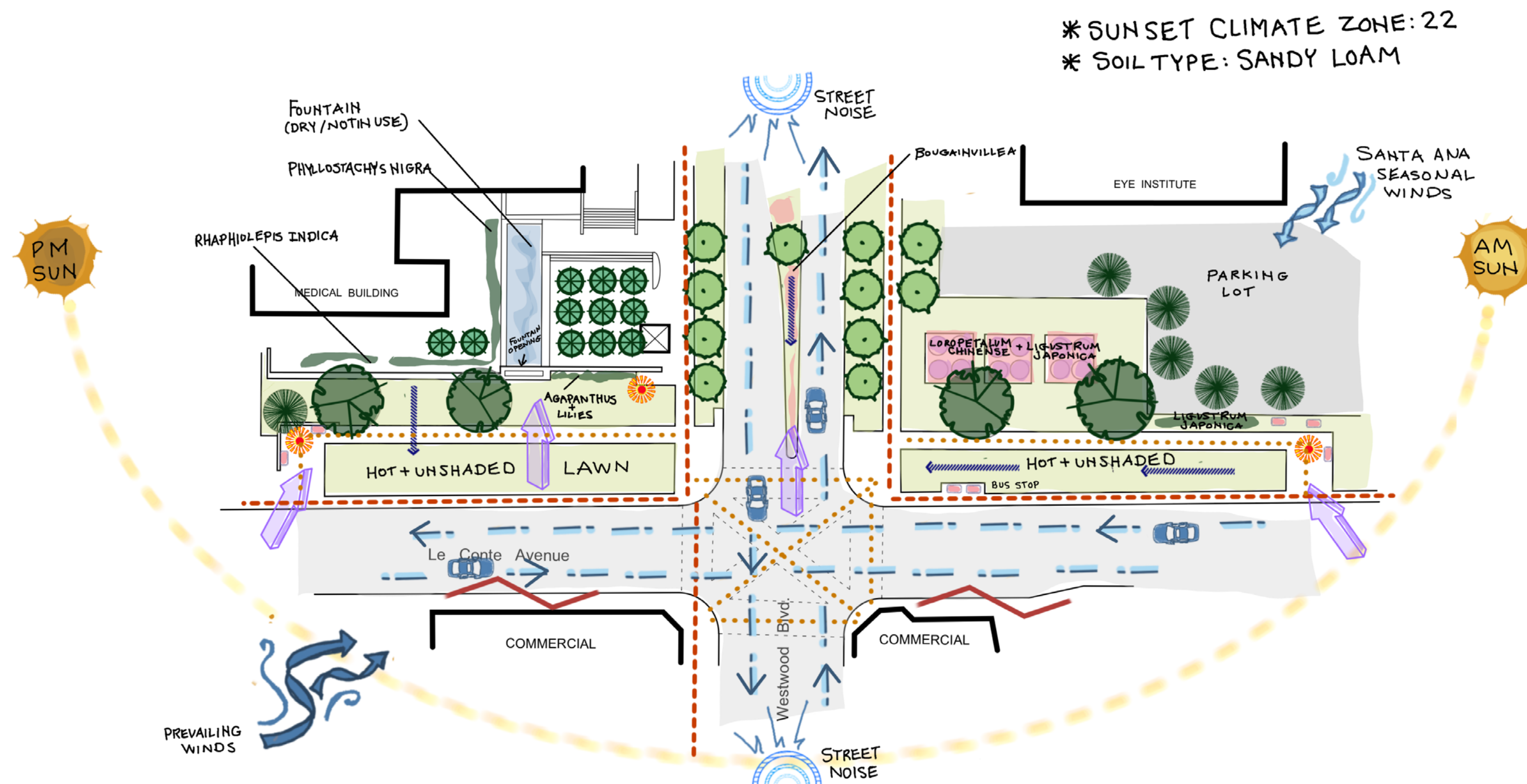
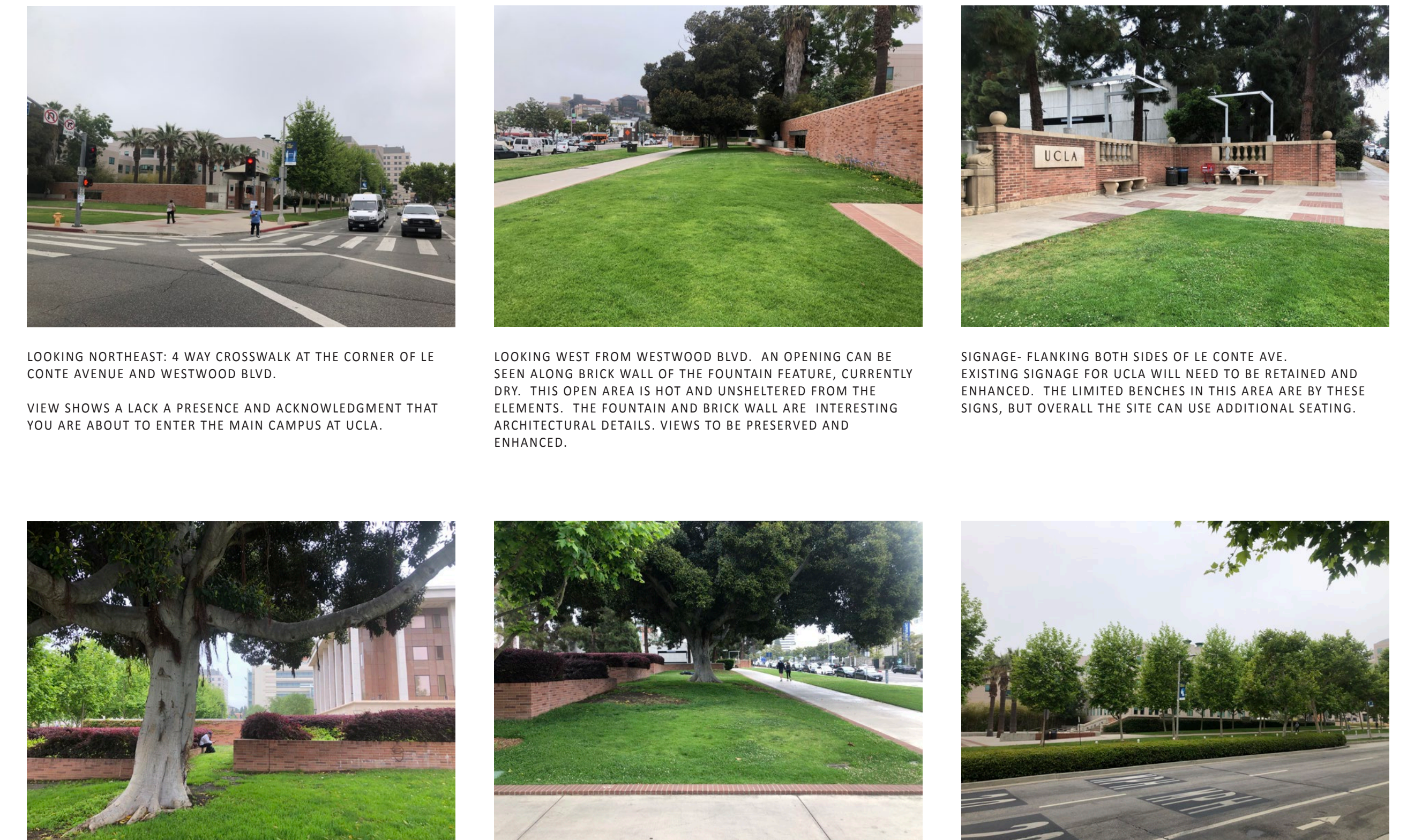


SITE ANALYSIS



SITE PHOTOS



LOOKING NORTHEAST: 4 WAY CROSSWALK AT THE CORNER OF LE CONTE AVENUE AND WESTWOOD BLVD.
VIEW SHOWS A LACK A PRESENCE AND ACKNOWLEDGMENT THAT YOU ARE ABOUT TO ENTER THE MAIN CAMPUS AT UCLA.

LOOKING WEST FROM WESTWOOD BLVD. AN OPENING CAN BE SEEN ALONG BRICK WALL OF THE FOUNTAIN FEATURE, CURRENTLY DRY. THIS OPEN AREA IS HOT AND UNSHELTERED FROM THE ELEMENTS. THE FOUNTAIN AND BRICK WALL ARE INTERESTING ARCHITECTURAL DETAILS. VIEWS TO BE PRESERVED AND ENHANCED.

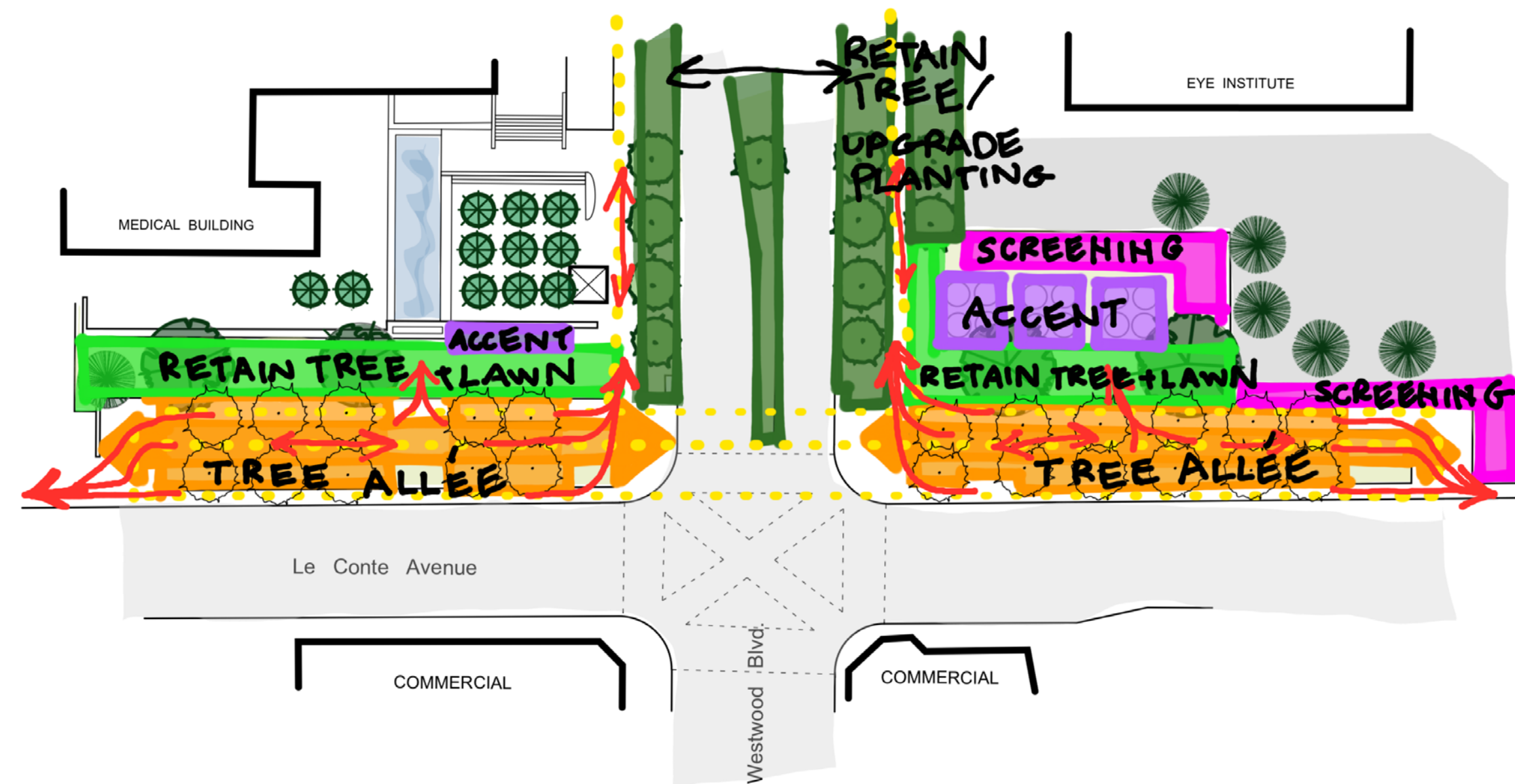
SIGNAGE- FLANKING BOTH SIDES OF LE CONTE AVE. EXISTING SIGNAGE FOR UCLA WILL NEED TO BE RETAINED AND ENHANCED. THE LIMITED BENCHES IN THIS AREA ARE BY THESE SIGNS, BUT OVERALL THE SITE CAN USE ADDITIONAL SEATING.

ON THE EAST SIDE, LOOKING AT THE EXISTING PLANTERS AND LARGE FICUS RUBIGINOSA. CONSIDERATION IS TO KEEP AS IS AND WORK AROUND EXISTING MATURE TREES. PLANTERS ARE UNDERPLANTED AND NEED UPGRADING. SURROUNDING THE PLANTERS IS UNUSED TURF AND CONSIDERATIONS SHOULD BE MADE TO IMPROVE THE DIVERSITY OF PLANTING HERE.

LOOKING EAST FROM WESTWOOD BLVD. PLANTERS AND FICUS TREES TO BE RETAINED. GREEN TURF ON RIGHT SIDE IS UNDERUSED, HOT AND UNSHADED WHICH MIRRORS THE OTHER SIDE ALONG LE CONTE AVE.

LOOKING AT THE CENTER MEDIAN ALONG WESTWOOD BLVD. EXISTING PLATANUS X ACERIFOLIA TO RETAIN BUT MEDIAN PLANTING CAN BE UPDATED AND DIVERSIFIED.

PROPOSED AREA USE



DESIGN NARRATIVE

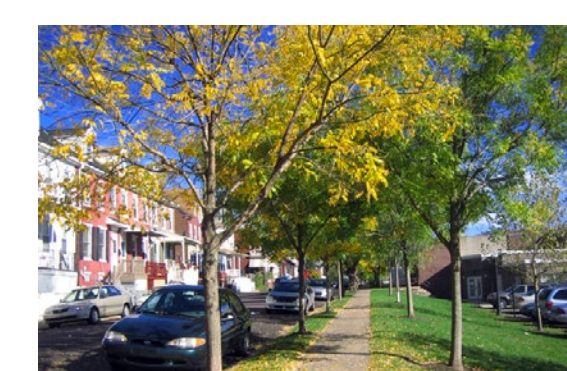
The three main takeaways from site analysis and impressions of the site are its need for SHADE, SEATING, and a much greater sense of IDENTITY. As the gateway and official start of the UCLA campus, this area lacks presence and a feeling of transition that you are about to step or drive into one of the top universities in the world.

The new design uses planting and trees to create additional spaces to gather and rest as well as increase the overall sense of space and arrival. The big idea along Le Conte Ave is the addition of an International Allée of Trees. While these trees vary in shape and form, they share similar(ish) spread, medium water needs, and will be trained to create a double canopy flanking the existing sidewalks along La Conte Ave. The variety of these trees from around the world represents the diverse student body and faculty of the university and its spirit of inclusion that instills a better learning environment for everyone included. Los Angeles itself is one of the most diverse cities in the world, and using trees from 6 continents symbolizes this inclusion as well as the added benefit of dramatic views and a variety of seasonal value, color and texture as you travel North up Westwood Blvd on your arrival to campus; akin to a natural living row of international flags on flagpoles. Beneath the canopy of these trees, a decomposed granite path flanked with benches provides a shady and serene respite in an otherwise hectic intersection. The smaller trees will be used at the ends and near openings, like the existing fountain, to provide open vignettes as seen from the street, as well as give a rhythm to the Allée in terms of tree heights.

Turf remains a valuable gathering spot and hang out space on campus, so some of it is being retained. The existing Ficus Ribiginosa has also found harmony with this turf so North of the new Allée of trees, adjacent to the fountain and brick wall, and across Westwood Blvd below the raised brick planters, this grass will remain as a place to hang out, lay down a blanket or rest.

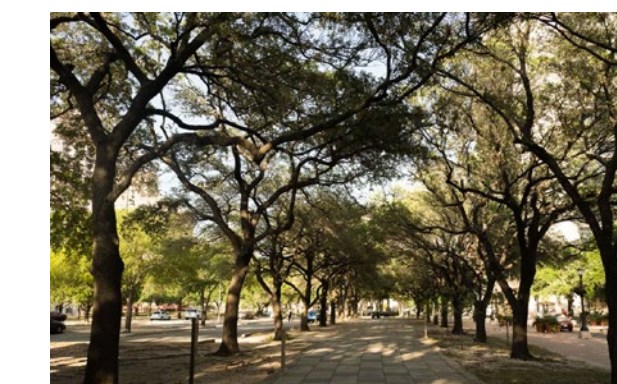
Running along the brick walls, the plantings will be updated and refreshed with a focus on CA natives for habitat value. Yellow and blue/purples are used as a nod to the school's colors, but full season and screening consideration are also made. The existing planters on the East side of Westwood Blvd will feature native Ceanothus with its blue seasonal coloring, countered with Lantana camara "Yellow Trailing" with its not so subtle shade beaming with Bruin pride and bursting with the thrill, fill and spill.

Finally, all existing trees will remain, including the Platanus x Acerfolia on Westwood Blvd, North of the street intersection. This area will be planted with a natural unstructured feel that focuses on CA natives, masses of grasses and plants that maximize habitat value and full interest all year long.

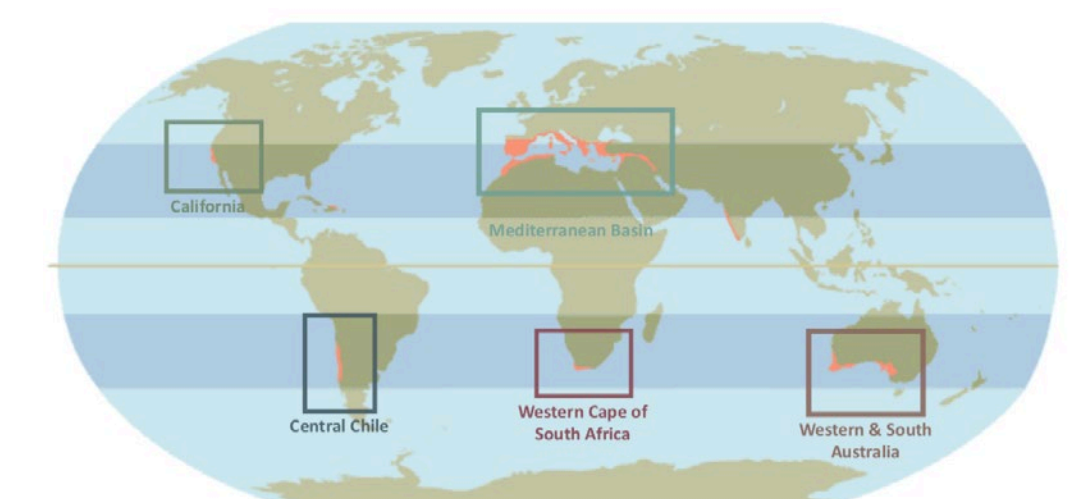


INSPIRATIONAL IMAGE OF A TREE ALLEE ADJACENT TO A BUSY STREET.

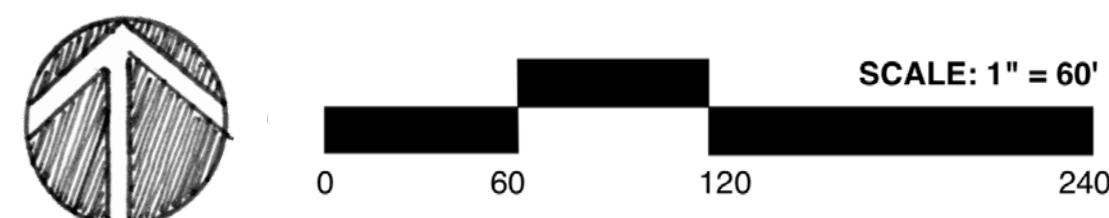
- TREES CHOSEN FOR FOR THE INTERNATIONAL ALLEE INCLUDE:
- Jacaranda mimosifolia- SOUTH AMERICA
 - Tipuana tipu: SOUTH AMERICA
 - Magnolia grandiflora: NORTH AMERICA
 - Laurus nobilis: EUROPE
 - Corymbia citriodora: AUSTRALIA
 - Ginkgo biloba: ASIA
 - Rhus lancea: AFRICA
 - Platanus racemosa: CALIFORNIA



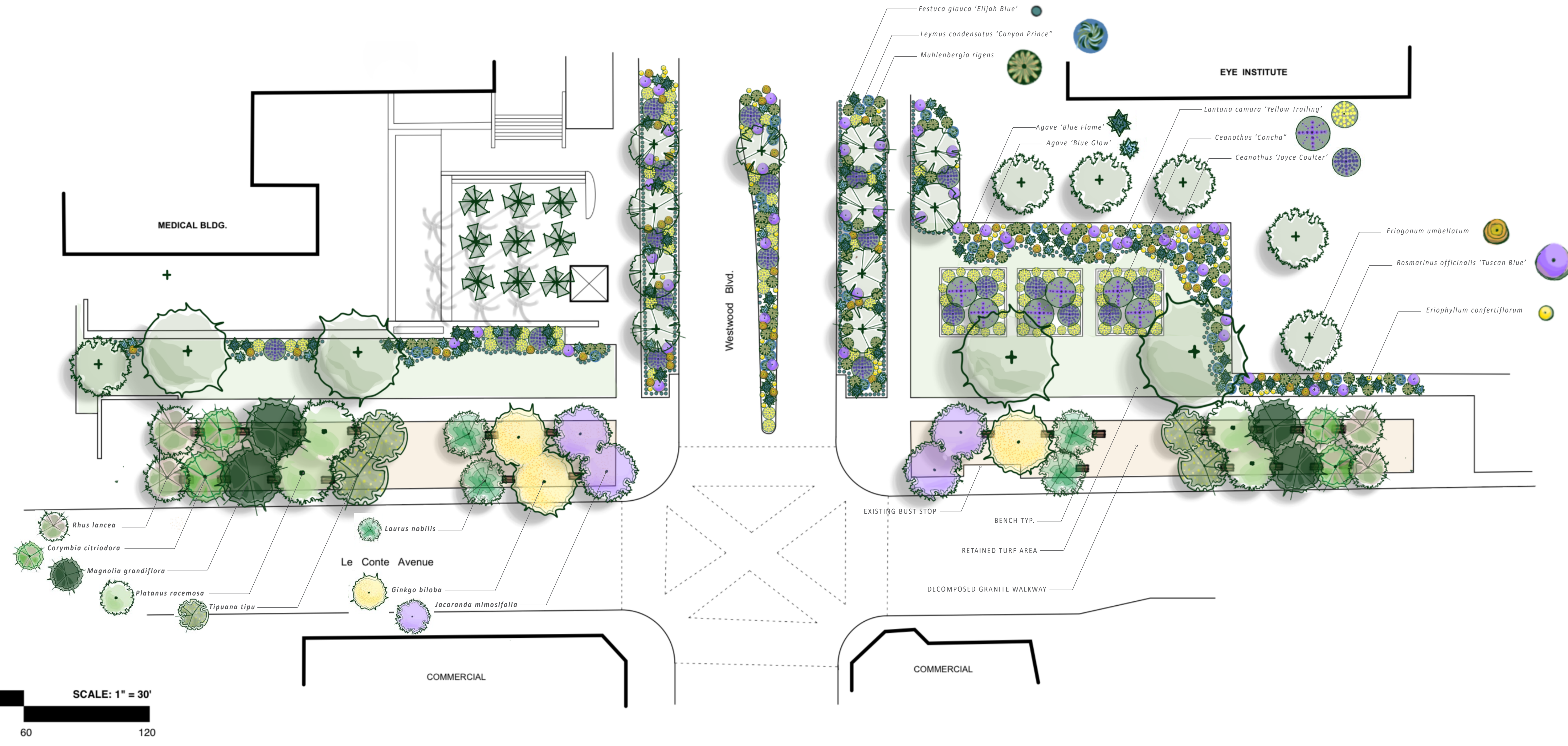
- EXISTING TREES ON SITE AND NEARBY ALSO REPRESENT THE DIVERSE URBAN CANOPY
- ALL EXISTING TREE WILL BE RETAINED FOR THE PURPOSES OF THE REDESIGN
- THEY INCLUDE:
- Pinus canariensis- AFRICA
 - Ficus rubiginosa- AUSTRALIA
 - Platanus x Acerfolia- HYBRID
 - Washingtonia Filifera- CALIFORNIA NATIVE



TREES WILL BE USED AS DIVERSE IN SCOPE AS THE MEDITERRANEAN CLIMATE ALLOWS. TREES FROM 6 CONTINENTS WILL BE USED IN THE TREE ALLEE AND THROUGHOUT TO REPRESENT THE WIDE DIVERSITY OF THE UCLA STUDENT BODY AND STAFF.











CONCEPTUAL PLANTING PLAN



PLANT PALETTE









INTERNATIONAL TREE ALLEE

*Note- Trained as single trunk and raised canopy. Smaller specimens (Rhus Lancea, Laurus nobilis) will be planted in as largest condition that can be found.

 <p>Jacaranda mimosifolia Jacaranda 20-50' x 20-30' wucols M NATIVE TO SOUTH AMERICA</p>	 <p>Ginkgo biloba Maidenhair Tree 50' x 25' wucols M NATIVE TO ASIA</p>	 <p>Platanus racemosa CA Sycamore 30-80 x 20-50 wucols M NATIVE TO CALIFORNIA</p>	 <p>Magnolia grandiflora Southern Magnolia 60-80 x 25 x 50 wucols M NATIVE TO NORTH AMERICA</p>
 <p>Rhus lancea African Sumac 20-30' x 20-35' wucols M NATIVE TO AFRICA</p>	 <p>Tipuana tipu Tipu Tree 20-50' x 20-30' wucols M NATIVE TO SOUTH AMERICA</p>	 <p>Laurus nobilis Greek Laurel 15-35' x 15-35' wucols M NATIVE TO EUROPE</p>	 <p>Corymbia citriodora Lemon Scented Gum 40-60 x 15-40 wucols M NATIVE TO AUSTRALIA</p>

ADDITIONAL PLANT PALETTE

Plants chosen for native value, blue (well, sometime purple) and yellow/gold coloring, and various texture and seasonality.

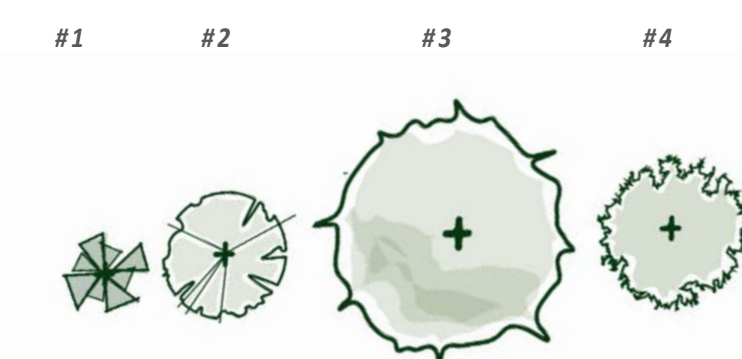
 <p>Ceanothus 'Concha' Concha California Lilac 6-8' x 6-12' wucols L NATIVE TO CALIFORNIA</p>	 <p>Ceanothus 'Joyce Coulter' Joyce Coulter Ceanothus 2-3' x 10-15' wucols L NATIVE TO CALIFORNIA</p>	 <p>Rosmarinus officinalis 'Tuscan Blue' Upright Rosemary 4-6' x 4-5' wucols L NATIVE TO MEDITERRANEAN</p>	 <p>Agave 'Blue Flame' Blue Flame Agave 2-3' x 3-4' wucols L NATIVE TO MEXICO</p>
 <p>Lantana camara 'Yellow Trailing' Yellow Spreading Lantana 2-3' x 6-8' wucols L NATIVE TO MEXICO</p>	 <p>Eriophyllum confertiflorum Yellow yarrow 2' x 1.5' wucols VL/ L NATIVE TO CALIFORNIA</p>	 <p>Eriogonum umbellatum Sulphur Buckwheat 6-8' x 12-36" wucols L NATIVE TO CALIFORNIA</p>	 <p>Agave 'Blue Glow' Blue Glow Agave 1-2' x 2-3' wucols L NATIVE TO MEXICO</p>

GRASSES PLANTED IN MASSES

Plants chosen for native value, blue and gold coloring, and various texture and seasonality.

 <p>Muhlenbergia rigens Deer Grass 4' x 5' wucols L NATIVE TO CALIFORNIA</p>	 <p>Leymus condensatus 'Canyon Prince' Canyon Prince Wild Rye 2-3' x 3-5' wucols L NATIVE TO CALIFORNIA</p>	 <p>Festuca glauca 'Elijah Blue' Blue Fescue 1' x 1-2' wucols L NATIVE TO CALIFORNIA</p>
--	---	--

EXISTING TREE ON SITE



- #1 Washingtonia filifera
- #2 Platanus x acerifolia
- #3 Ficus Ribiginosa
- #4 Pinus canariensis