

DOWNTOWN LOS ANGELES URBAN MASTER PLAN

Design proposal for thresholds, gateways, and transition moments



AMELIA SNYDER

Landscape Design 7

Spring Quarter 2021

UCLA Landscape Architecture

Instructors Brief, Reynolds, Spulecki

DESIGN NARRATIVE

FOR THE MASTER PLAN

Making cultural institutions inclusive and interactive unlocks the full potential of public spaces.

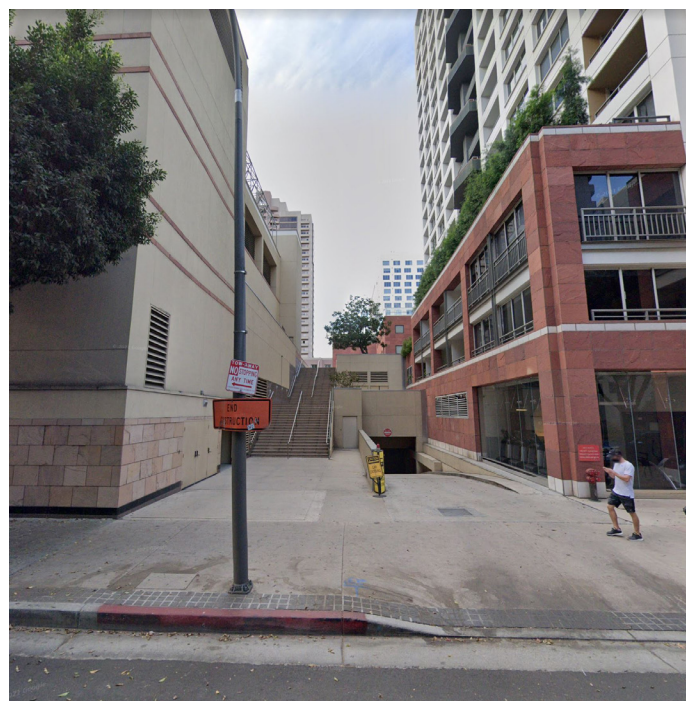
In order to foster radical inclusivity in a historically disrupted neighborhood, this project proposes to activate two new gateways **and the spaces and edges between them.**



INSPO- ROTATING INTERACTIVE PUBLIC ART



INSPO- PUBLIC PLAZA, FRUIT TREES FOR SHADE



EXISTING CONDITIONS...

INTIMIDATING

ISOLATED

SPARTAN

UNINVITING

MONOTONE

HARD

INSTITUTIONAL

DISORIENTING

FOR THE THRESHOLDS

Thresholds are spatial components of the landscape which provide for integrated, subtle and complex transitions through the landscape.

...‘Knit’ the fabric of landscape together.”

...Spaces to mark the arrival and the social, cultural, and practical activities associated with this.

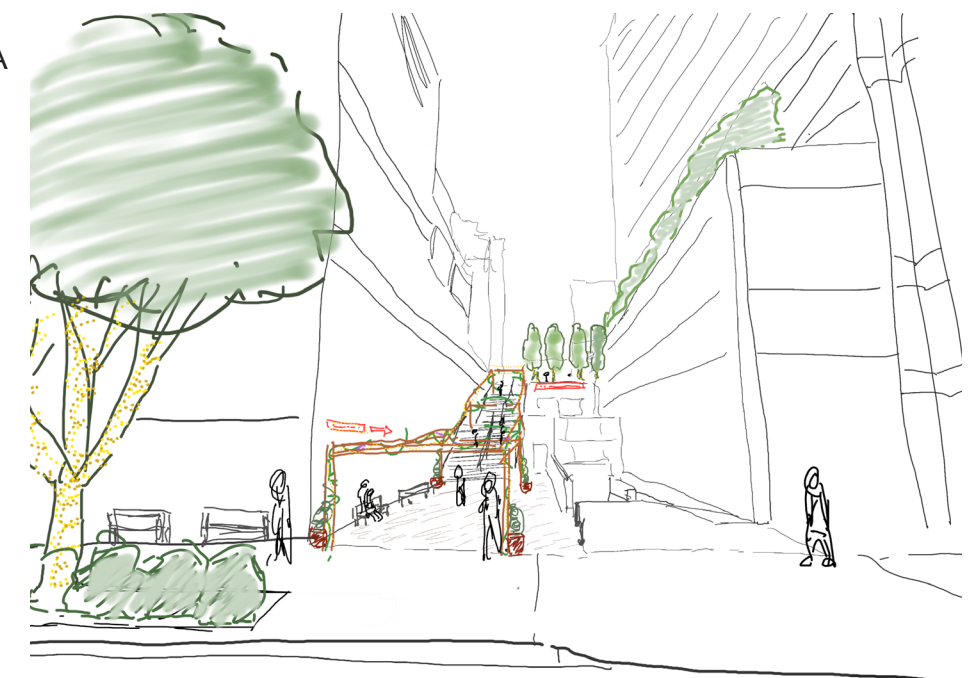
...“Unofficial” or “unmanaged” places that are adopted by the community for specific recreational or social uses.

CATHERINE DEE, FORM AND FABRIC IN LANDSCAPE ARCHITECTURE



INCLUSIVE
INTERACTIVE
INVIGORATING
INVOLVING

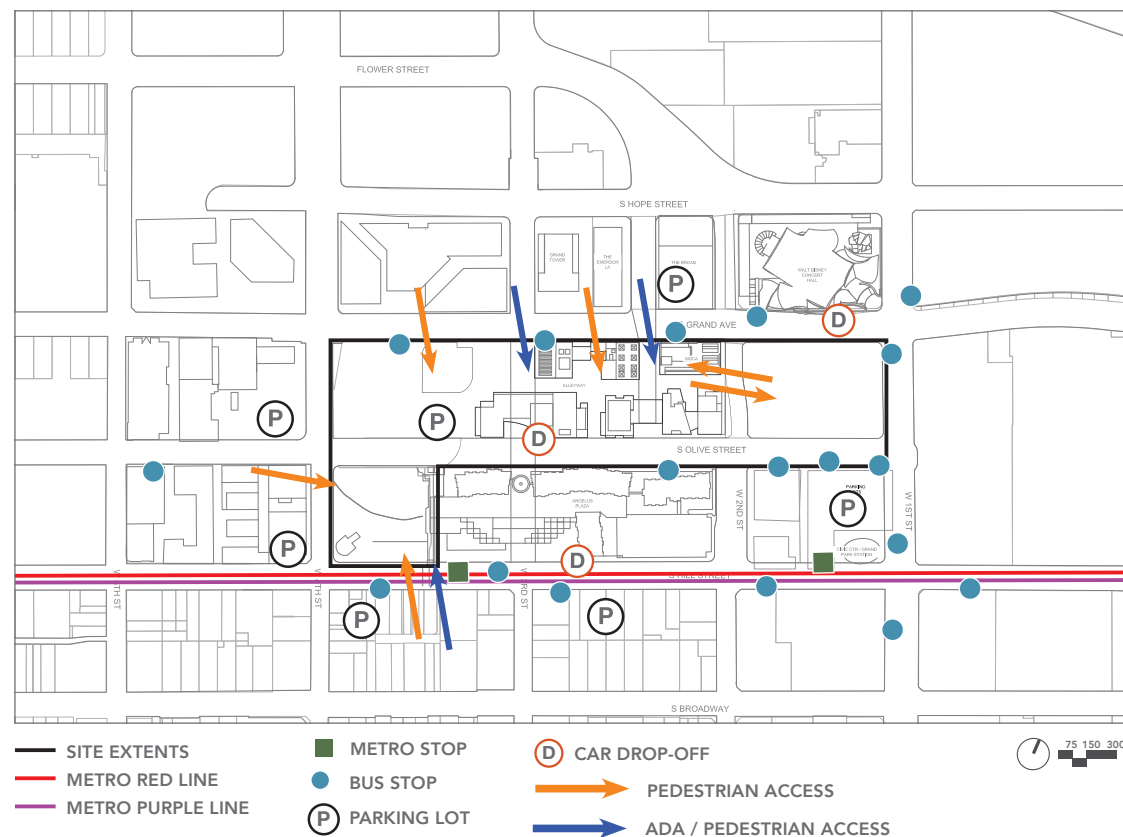
GOALS AND BIG IDEA
IMMERSIVE
INVITING
INSIDE-OUT
IMPRESSIVE



SITE ANALYSIS

Key components from the Group Site Analysis that influenced my design-
see appendix for full site analysis

ANALYSIS: Transportation & Access



METRO:
 - Site has two metro stops accessed by the Red Line
 - Stop are both on the lower elevation (east slope), pose difficulty for ADA Access

BUS:
 - Site is accessible by bus on all sides

PEDESTRIAN ACCESS:
 - ADA Access is limited
 - Non-ADA access is also somewhat limited for the size of the site
 - Redundancy in design of pedestrian areas
 - inconvenient and unnecessary stair progressions, uncomfortable stair design, etc.
 - Lack of aesthetic pedestrian gateways.
 - Poor pedestrian connection between the Hill & 2nd Street site portion and California Plaza.

VEHICULAR ACCESS:
 - There is ample pay parking nearby
 - Not very many drop-off points

Simone Drucker

Landscape Design 7 | Spring Quarter 2021 | Reynolds/Spulecki/Brief, Instructors

- **“Lack of aesthetic pedestrian gateways”**
- **Improve pedestrian connection**
- **Enhance bus stops**
- **Add drop-off points**
- **Include ADA access**
- **Adjust stair design**

ANALYSIS: Cultural Adjacencies



Activation will draw from connections to street and community.

Music
 LA Philharmonic
 Walt Disney Concert Hall
 Music Center:
 Dorothy Chandler Pavilion
 Mark Taper Forum,
 Ahmanson Theater
 Coblentz School of Music

Art
 The Broad
 MOCA
 The Arts District

Libraries
 Los Angeles Central Public Library

Historic Monuments
 Bradbury Building
 Our Lady of the Angels
 Historic Theater District

Community Events
 Farmers Market- Saturdays
 Protest Paths
 Family Events-Pershing Square

Alyssa Leal Moffitt

Landscape Design 7 | Spring Quarter 2021 | Reynolds/Spulecki/Brief, Instructors

- **Activate connections from street and community**
- **Emphasis on Art**
- **Consider community events**
- **Improve cultural relationships**

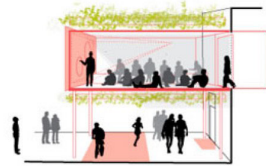
PRECEDENTS

References that influenced the design

CATALOGUE OF THEMATIC IDEAS



GREEN PASSAGEWAY
The presence of vegetation radically changes the perception and the comfort of the passageway. It becomes a quiet, cool and relaxed place.



CIVIC PASSAGEWAY
Spaces are equipped and expanded with structures that can host different activities. The passageway turns into a place for civic engagement.



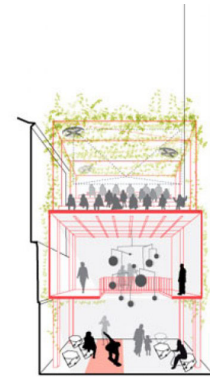
PLAYGROUND PASSAGEWAY
Structures, games and other elements turn the space into an adventure for both children and adults. A safe, fun, open air playground!



ACTIVE PASSAGEWAY
The protected but open space of the passageway becomes the perfect place for a cool and well ventilated gym, a training track, etc.



LEISURE PASSAGEWAY
In for a drink? Want to hang out with some friends? The passageway is a unique place to meet, talk, eat and drink, or even have an intense party.



CULTURAL PASSAGEWAY
Art and culture can also find their way into the singular space of a passage. Exhibitions, workshops, lectures, plays, presentations, etc.



PASSAGEWAY EXPLORATION - Open Shore by Ecosistema Urbano

A redesign of the Urban Center of West Palm Beach. Intelligent, flexible, and responsive.

<https://www.metalocus.es/en/news/ecosistema-urbano-wins-competition-rethink-future-urban-center-west-palm-beach>



INSPIRED ENTRANCE- Petite Vie by Fontaine/Fortin/Labelle

Colourful walls and geometric doorways encourage passersby to use the walkway.

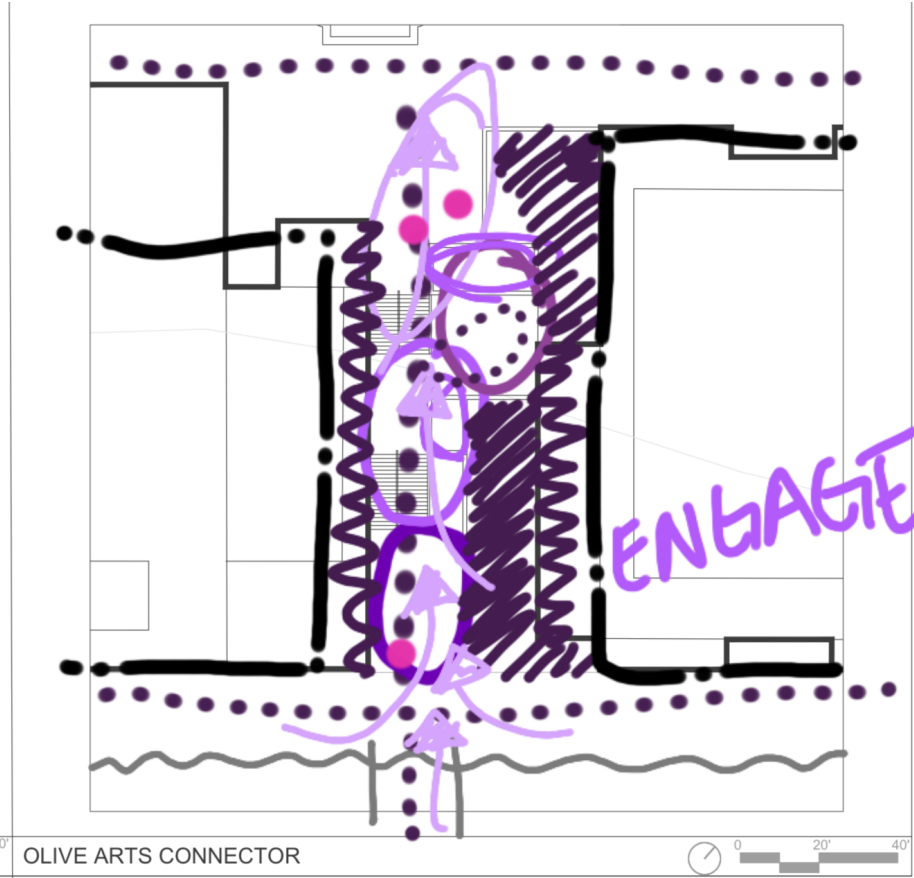
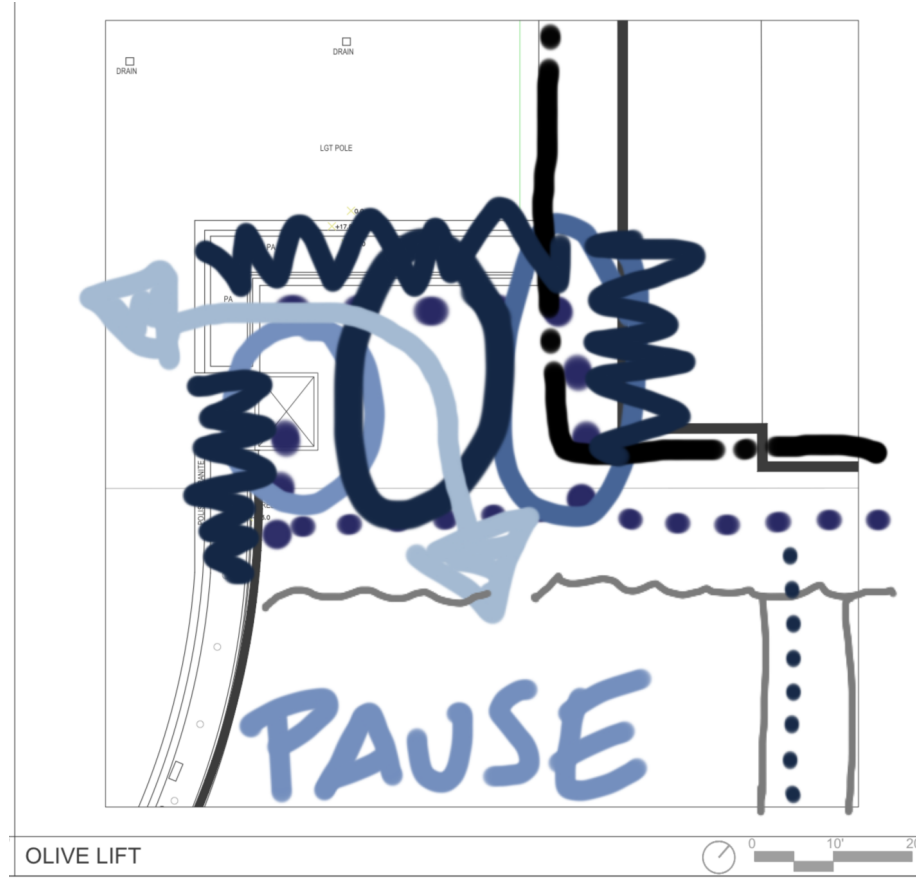
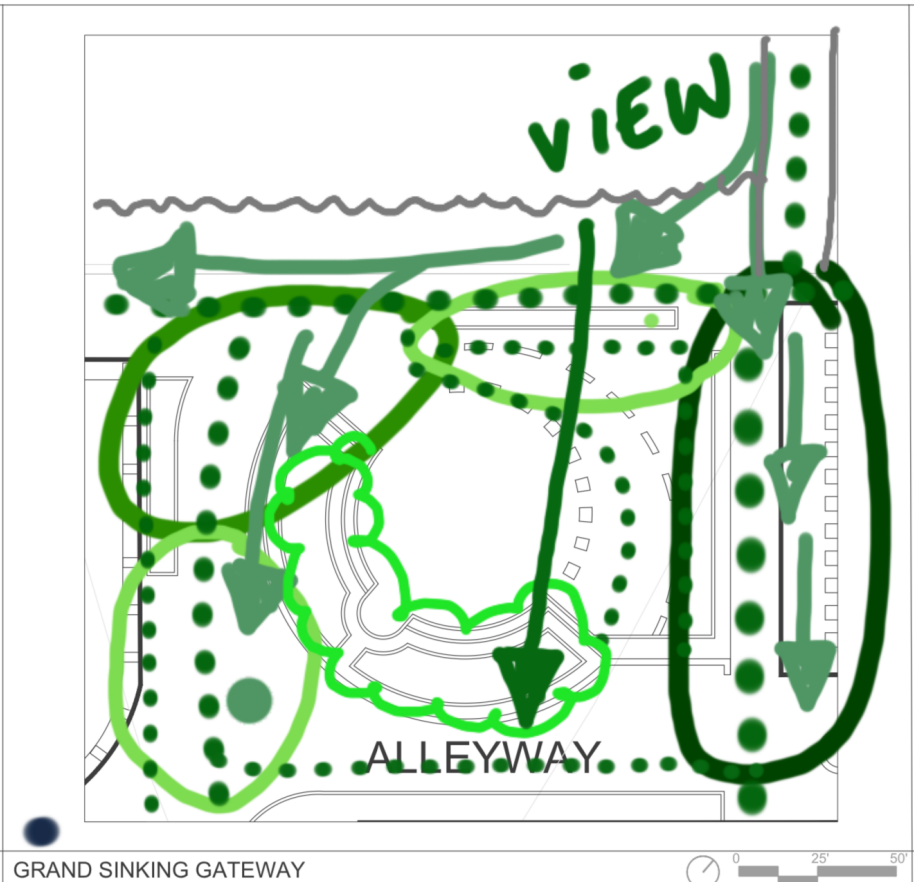
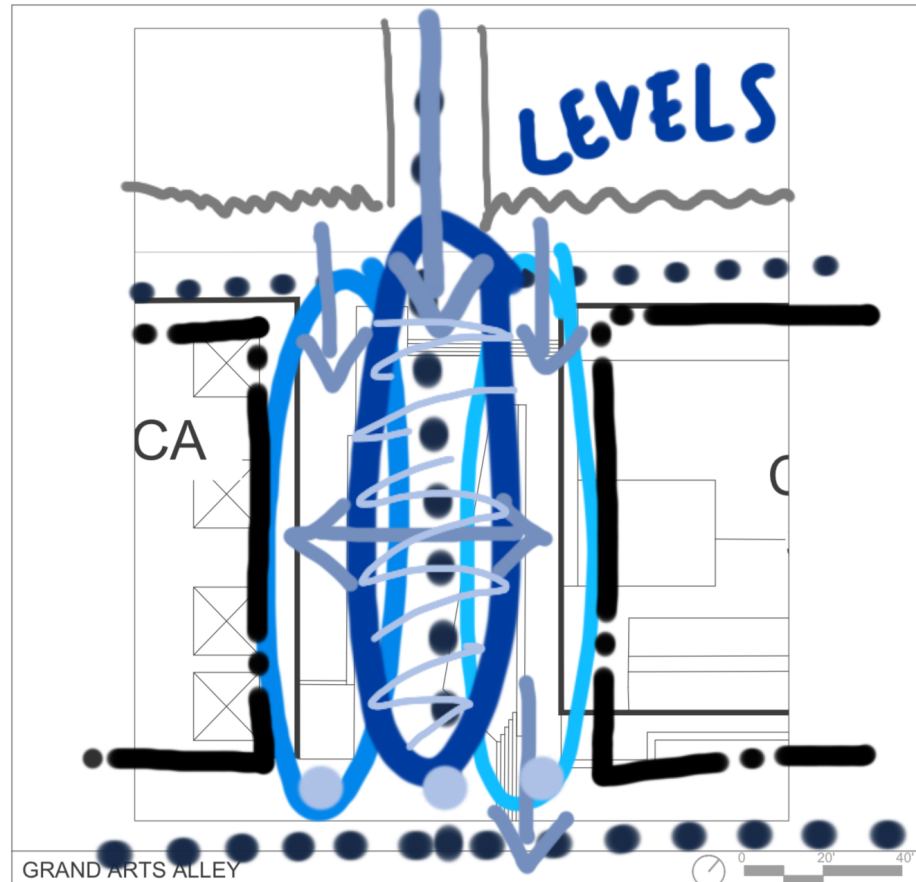
<https://www.dezeen.com/2015/08/08/francis-fontaine-luca-fortin-pascal-labelle-postmodern-inspired-installation-petite-vie-quebec-passageway/>

INTERACTIVE CONNECTIONS- Stairs on Śliska Street by arch_it studio

Offering a design that allows for new functions and new opportunities while becoming accessible.

https://archinea.pl/oryginalny-pomysl-schody-przestrzeni-miejskiej-krakowa-zwycieska-praca-studia-arch_it/

CONCEPT SKETCHES

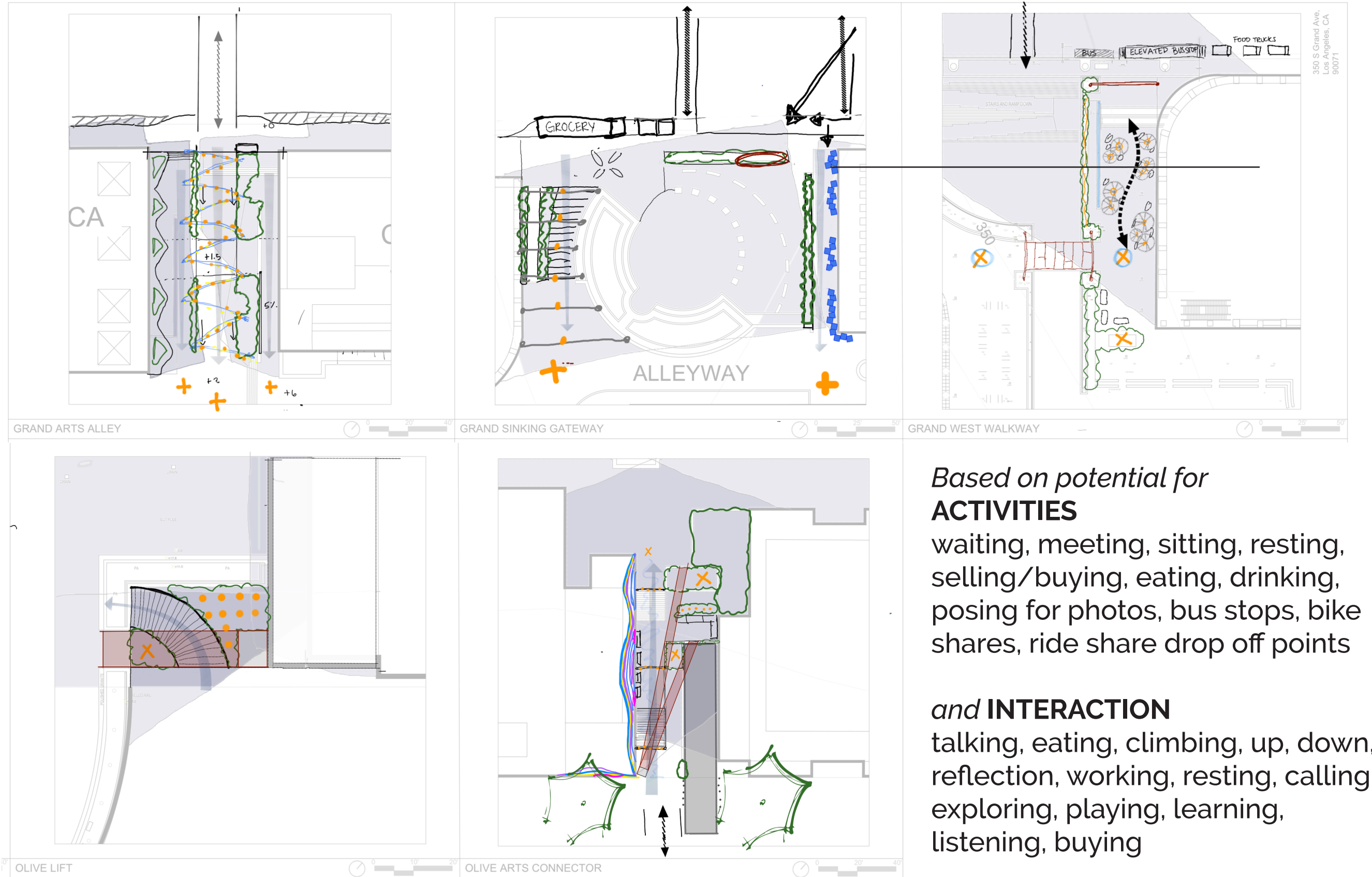


TRANSITIONS between the external environment and internal environment

HALF- IN / HALF-OUT experience; breathing space between two experiences

VISUAL LINK, the connecting frame

SCHEMATIC DESIGN SKETCHES



Based on potential for **ACTIVITIES**

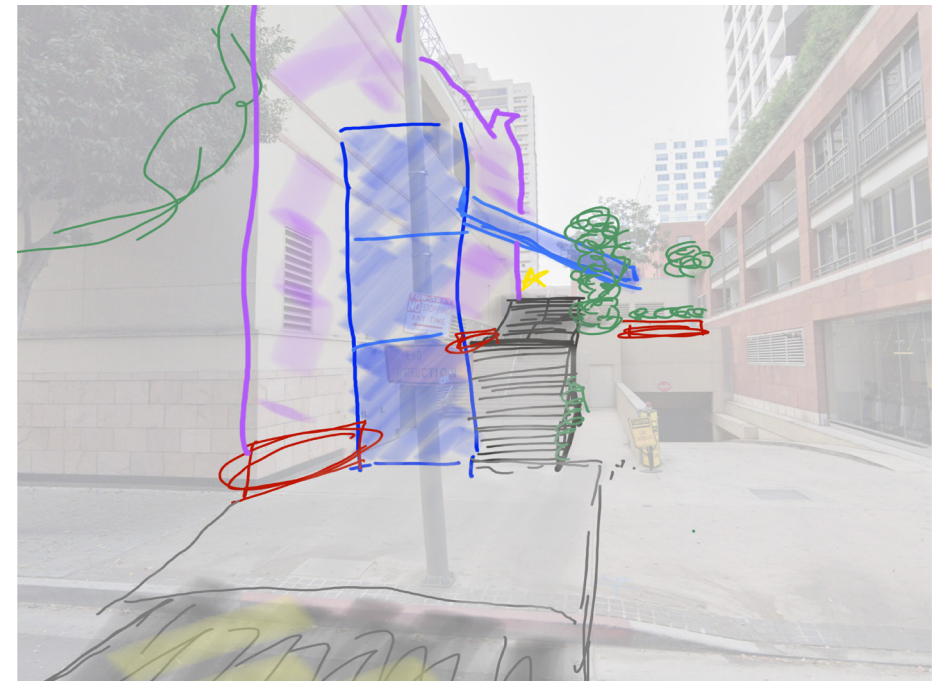
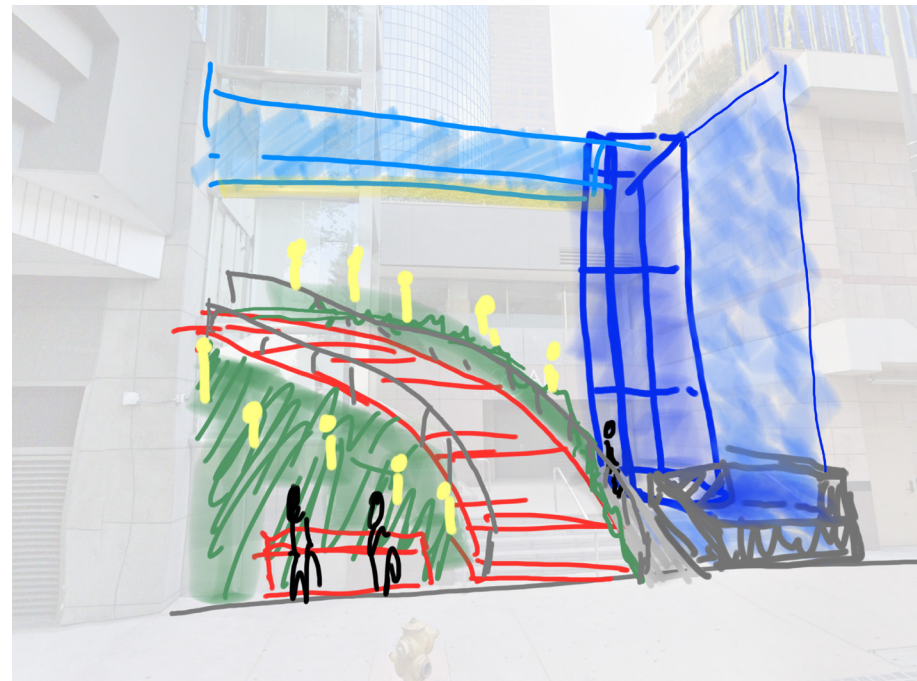
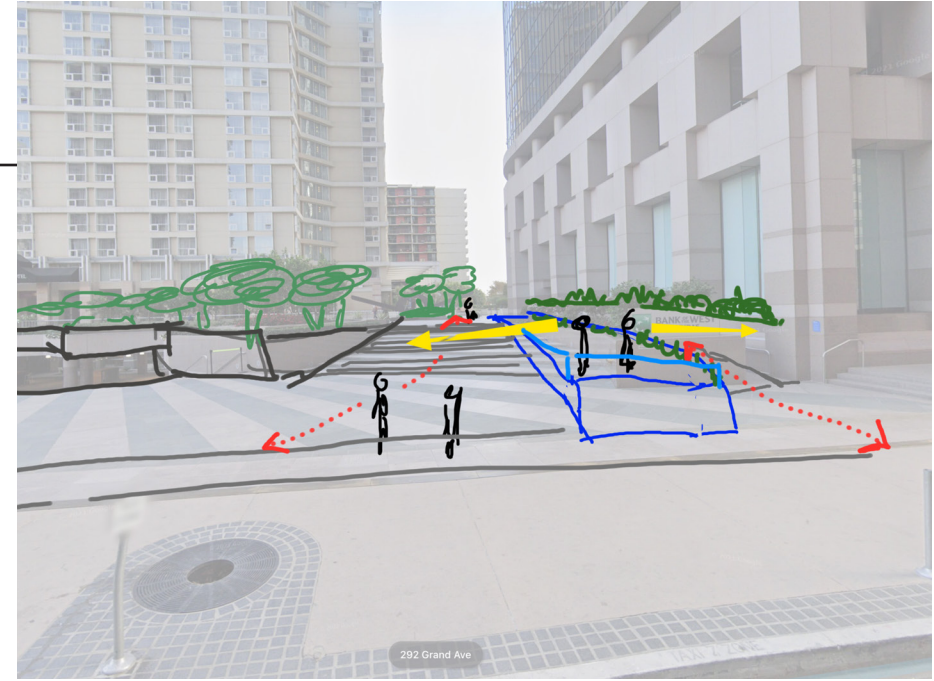
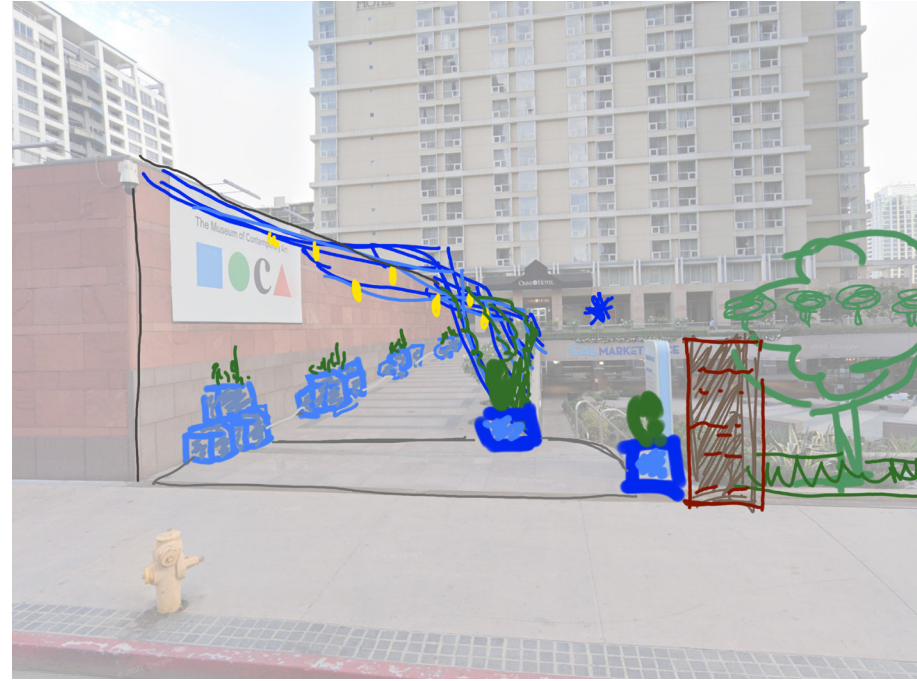
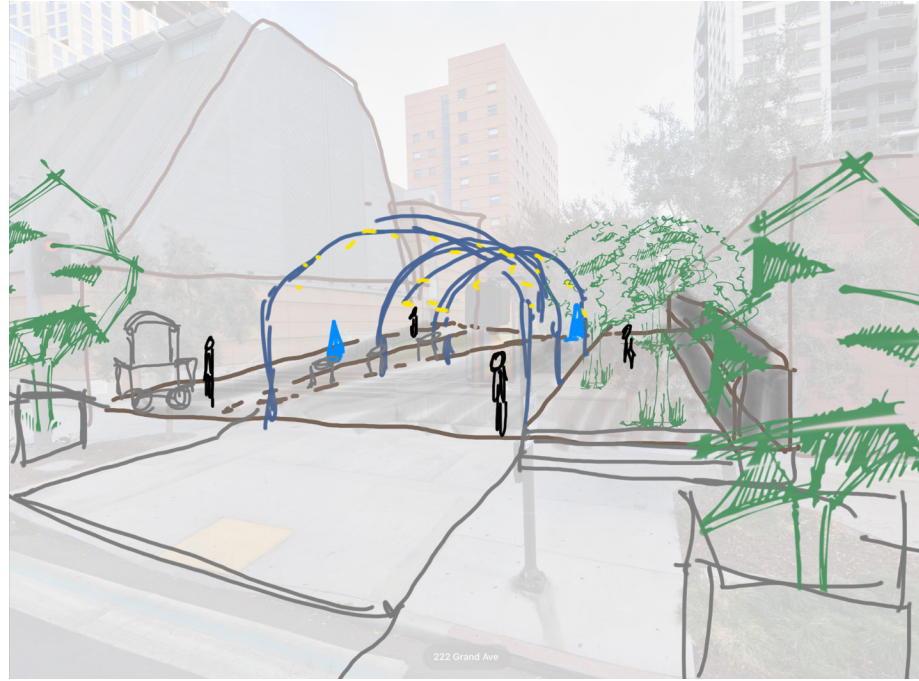
waiting, meeting, sitting, resting, selling/buying, eating, drinking, posing for photos, bus stops, bike shares, ride share drop off points

and **INTERACTION**

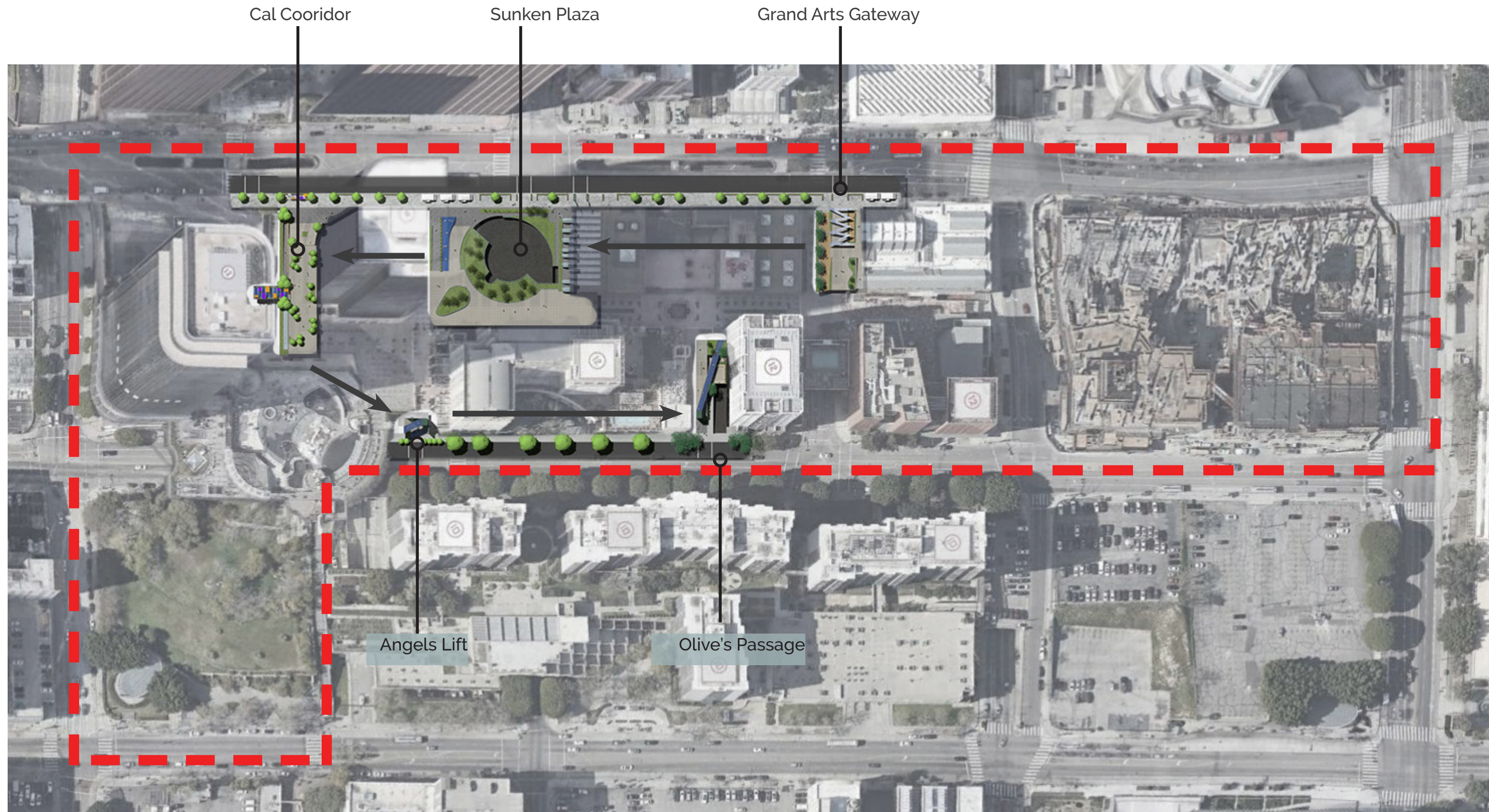
talking, eating, climbing, up, down, reflection, working, resting, calling, exploring, playing, learning, listening, buying

DESIGN DEVELOPMENT STUDIES

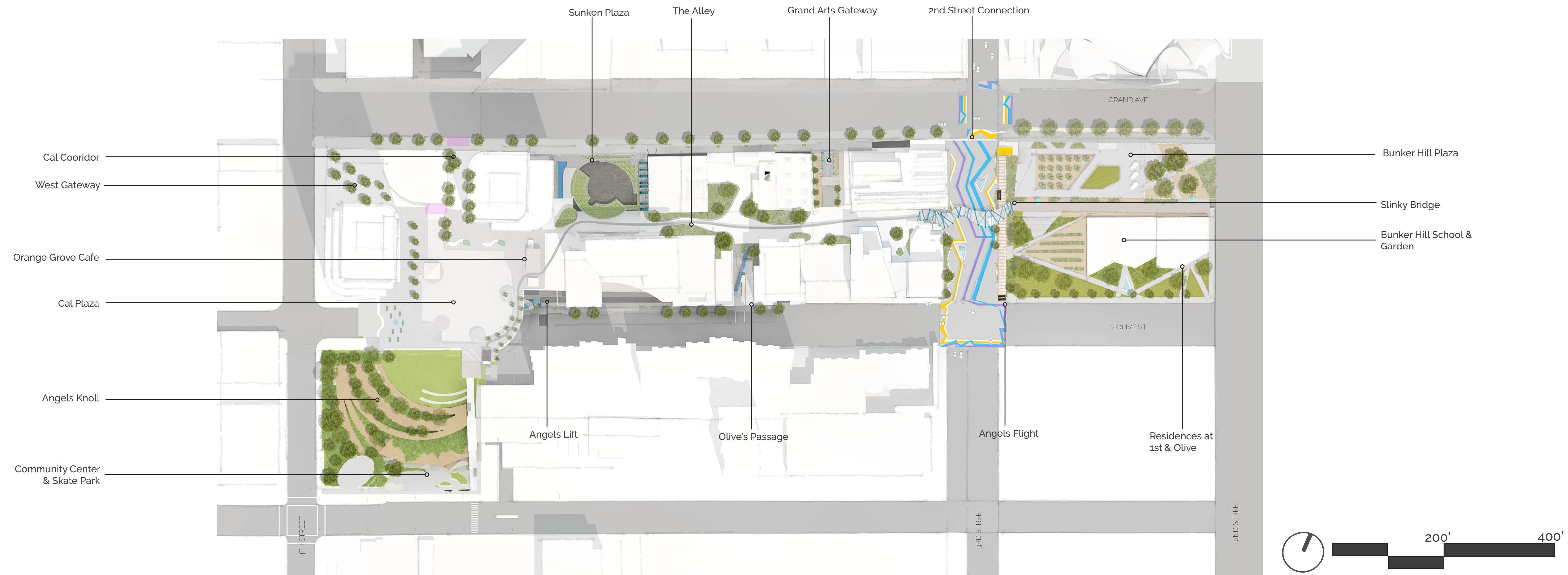
STUDIES of moments that **MARK THE ARRIVAL** for the new plaza and the social, cultural, and practical activities associated with it. Consider interactive art, landscape, accessibility.



FINAL DESIGN PROPOSAL- THRESHOLDS

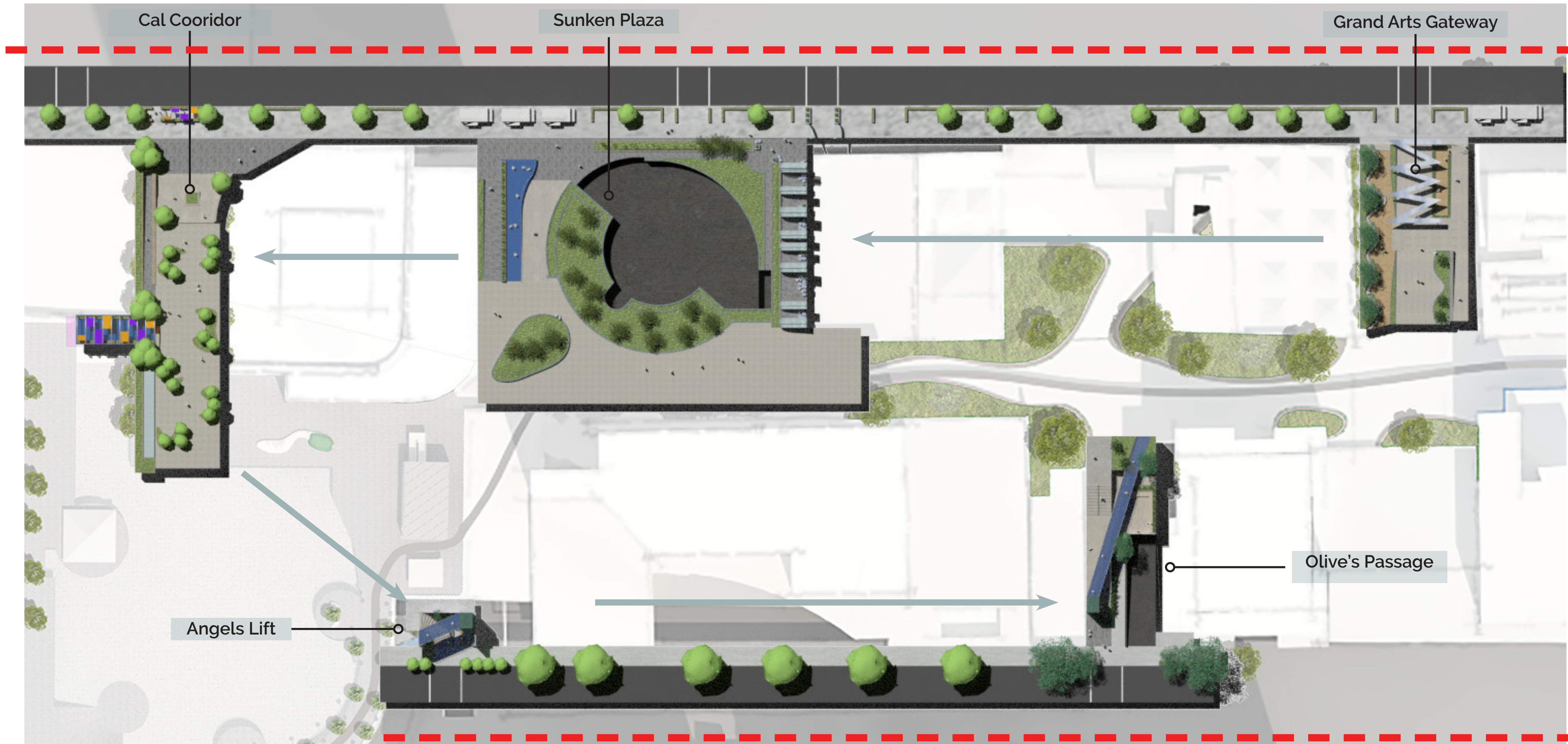


FINAL ILLUSTRATIVE PLAN- GROUP DESIGN PROPOSAL

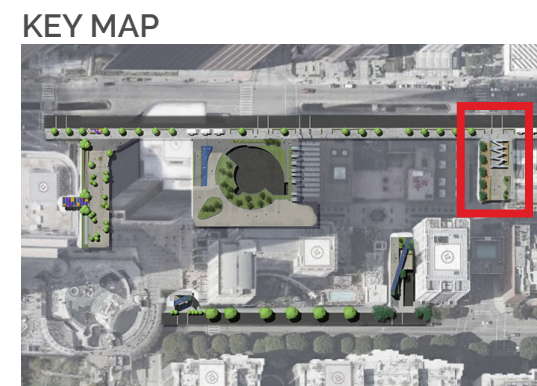
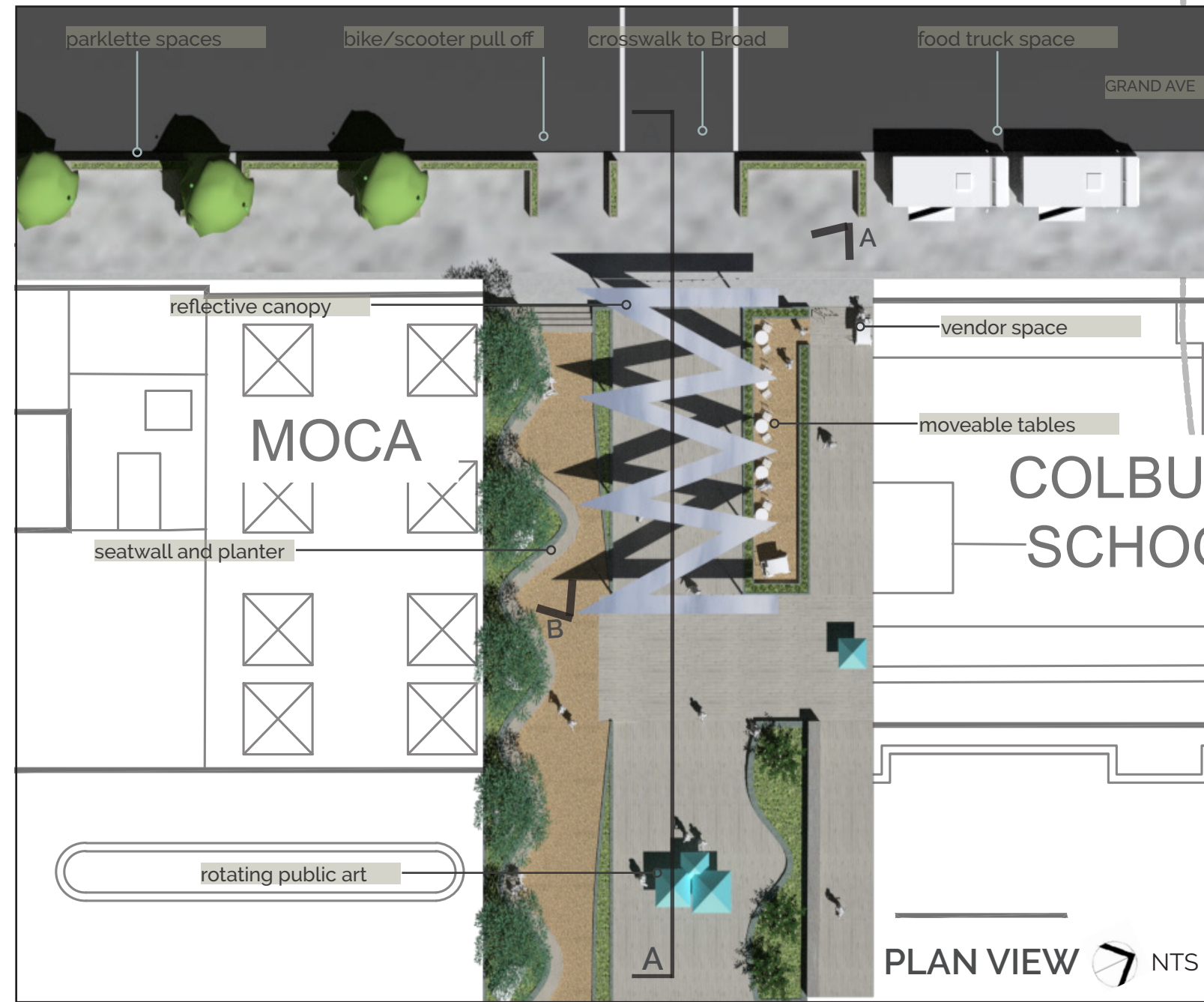


FINAL DESIGN BY Karen Stasevich, Tommy Plaggemeier, Katy Kirkpatrick,
Gus Koven, Cristina Arredondo, Amelia Snyder, Tim Switzer

**FINAL ILLUSTRATIVE PLAN-
INDIVIDUAL DESIGN PROPOSAL**



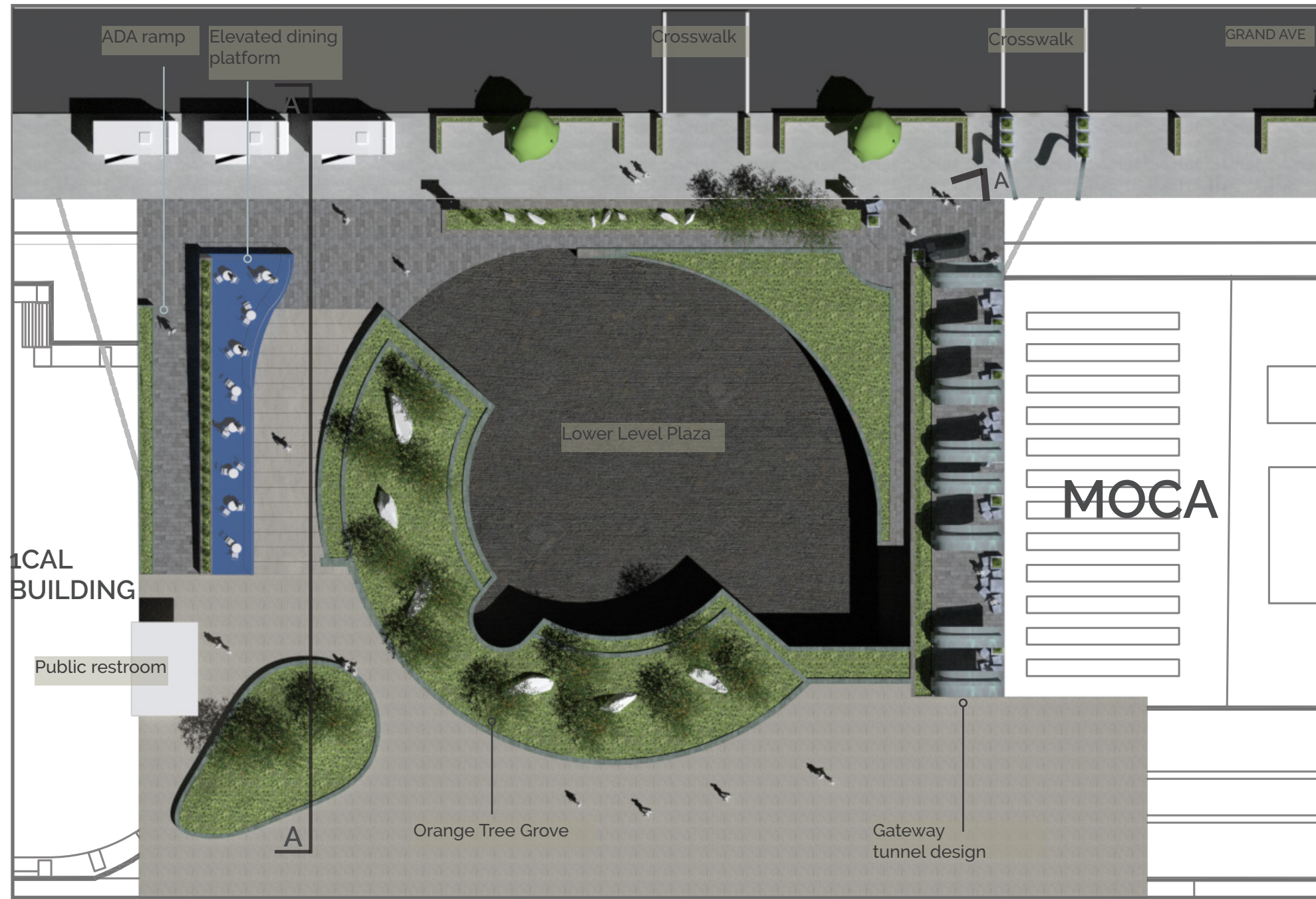
FINAL DESIGN- GRAND ARTS GATEWAY



- LEVELS/GROUND PLANE ADJUSTMENTS
- MATERIAL CHANGES- STONE, PAVERS, DG
- INTERACTIVE ART
- CEILING PLANE ALTERATIONS
- LOW GRADE FOR ADA ACCESSIBILITY
- LONG VIEW CORRIDORS



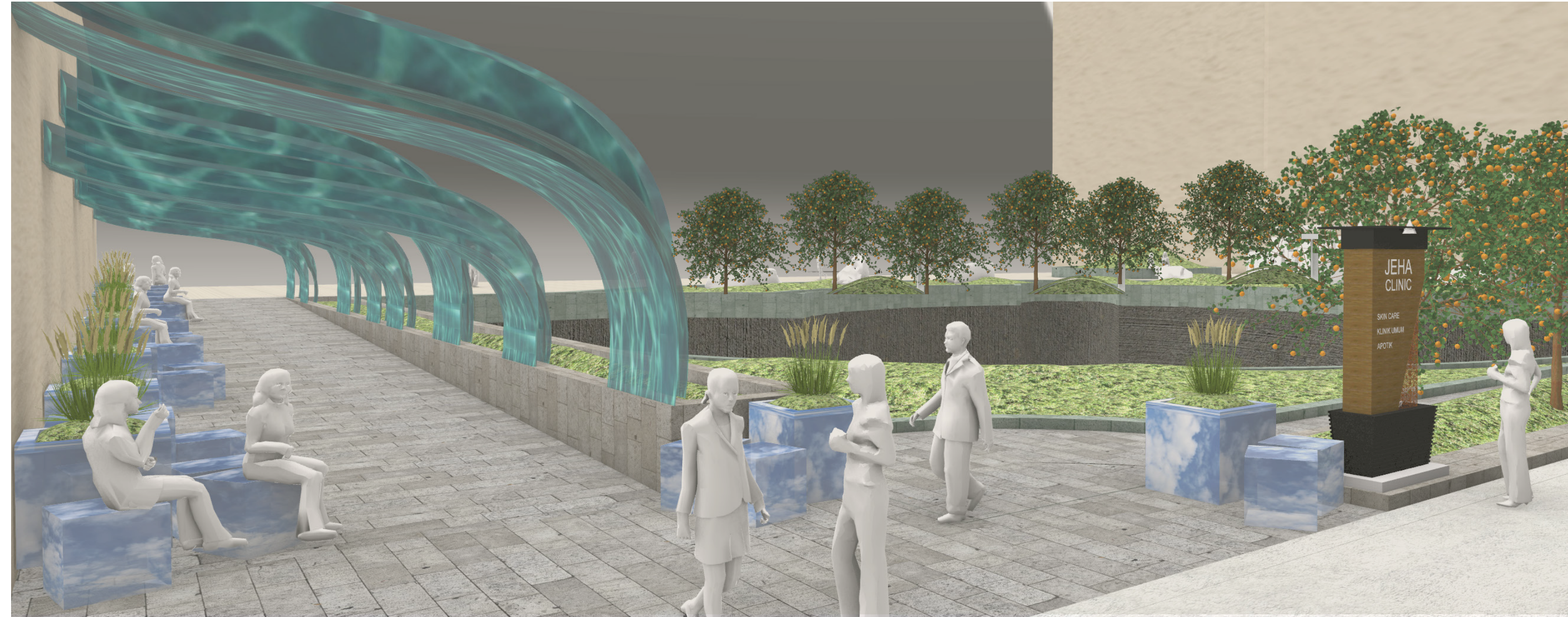
FINAL DESIGN- SUNKEN PLAZA



PLAN VIEW NTS



- MEETING AREA
- FOOD AND BEVERAGE
- REFLECTION, PEOPLE WATCHING
- UP AND DOWN
- HABITAT, ORANGE TREES AND BEES
- WAYFINDING, GUIDING FEATURES



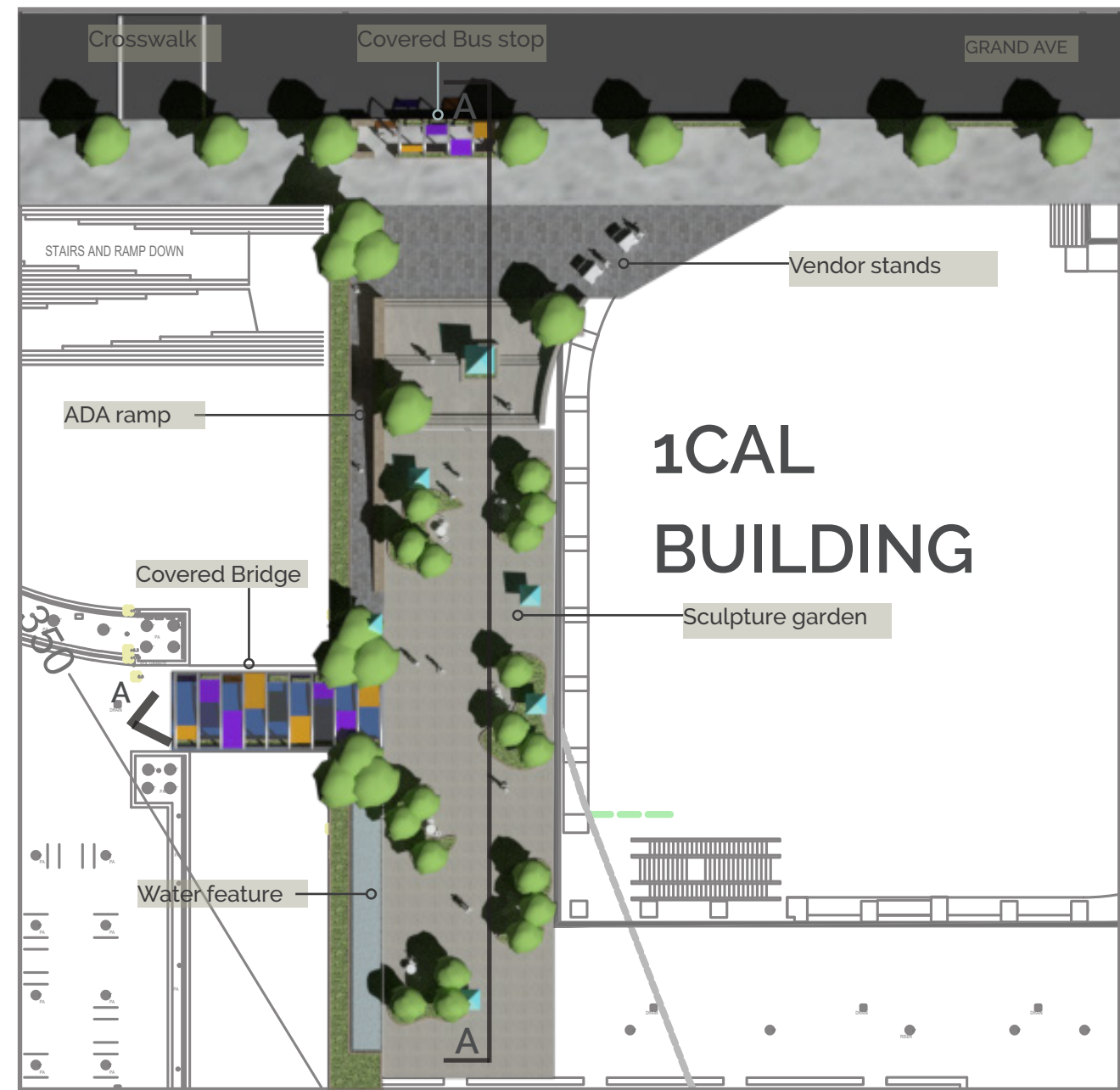
PERSPECTIVE A



SECTION A-A

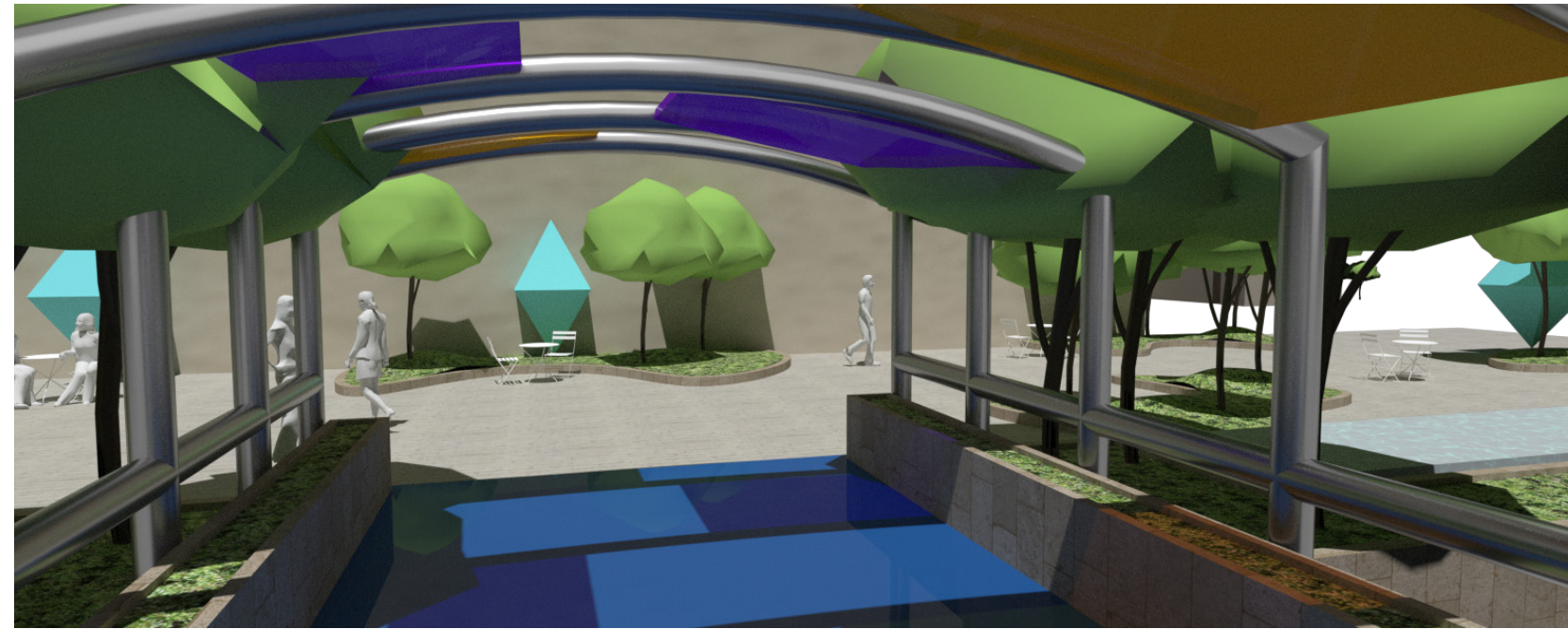


FINAL DESIGN- CAL COORIDOR

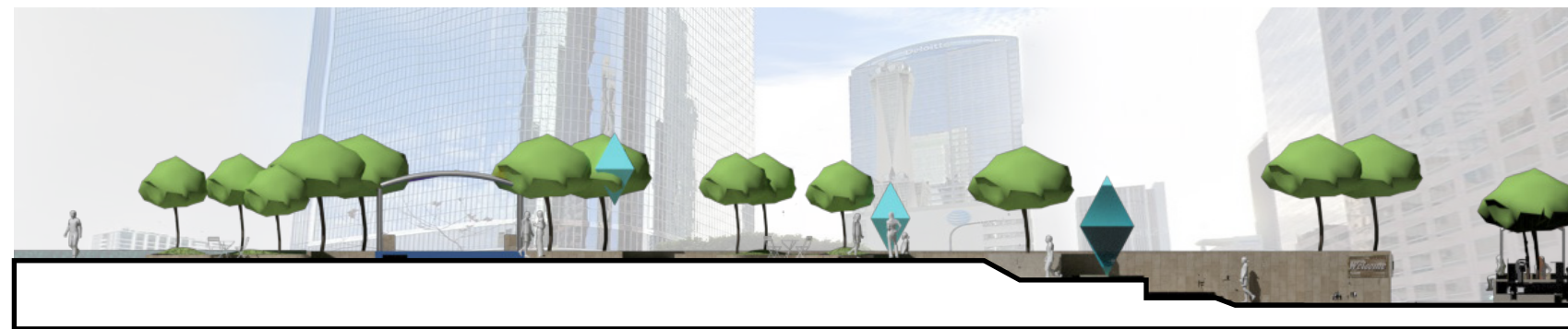


PLAN VIEW NTS

KEY MAP



PERSPECTIVE A



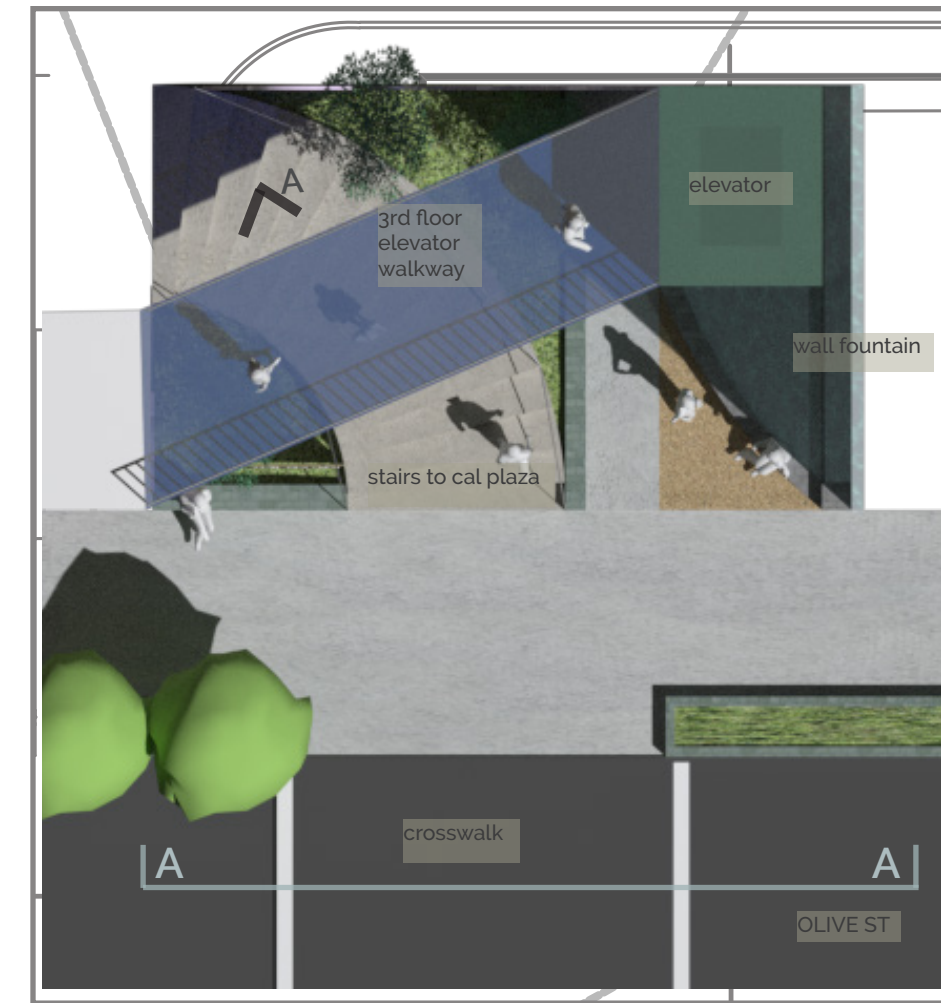
SECTION A-A



INSPO- COVERED BRIDGE/
BUS STOP DESIGN

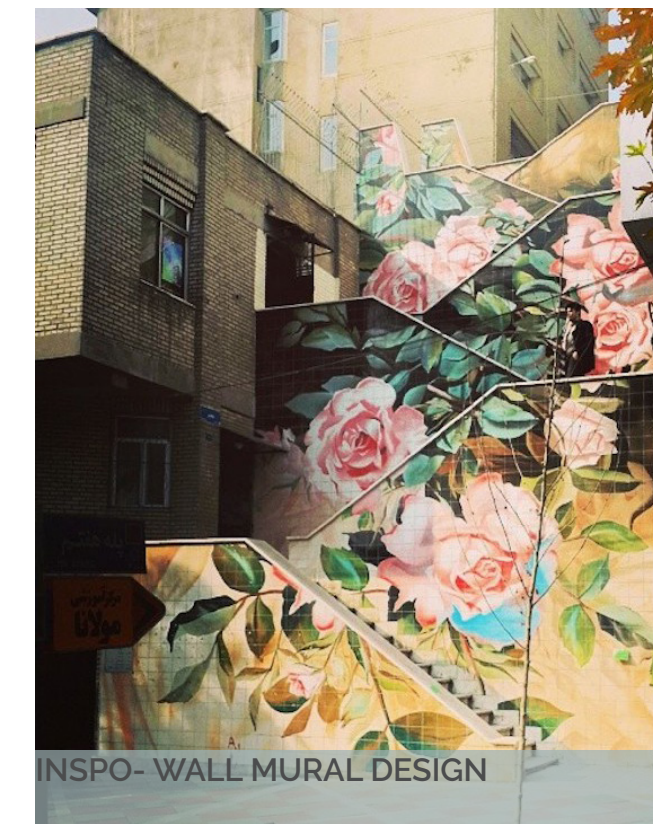
- ROTATING SCULPTURES
- PLAYFUL EXVIRONMENT
- URBAN FOREST
- IMPROVED BUS STOP
- WATER FEATURES, SENSORY TRIGGERS

FINAL DESIGN- ANGELS LIFT



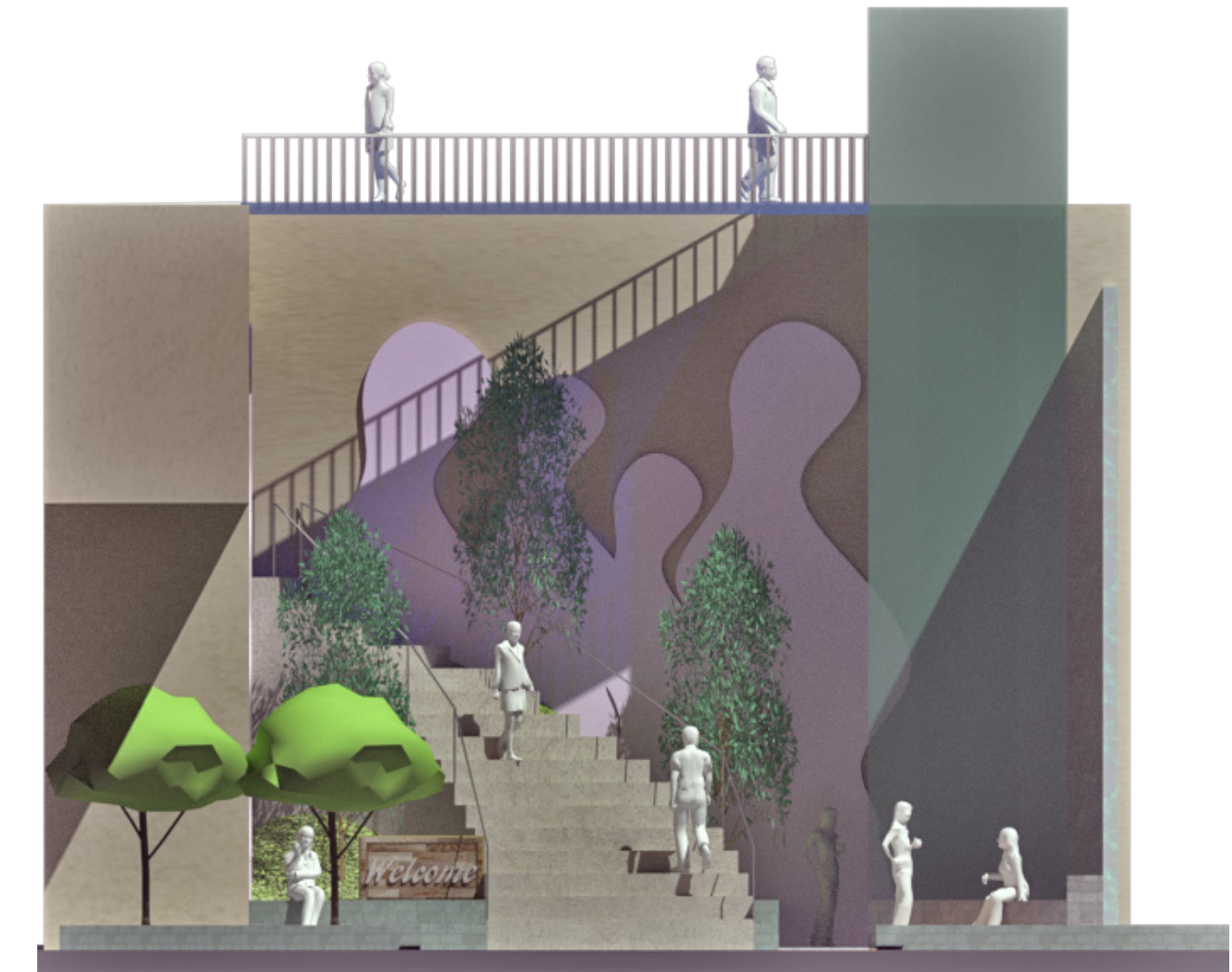
PLAN VIEW NTS

KEY MAP

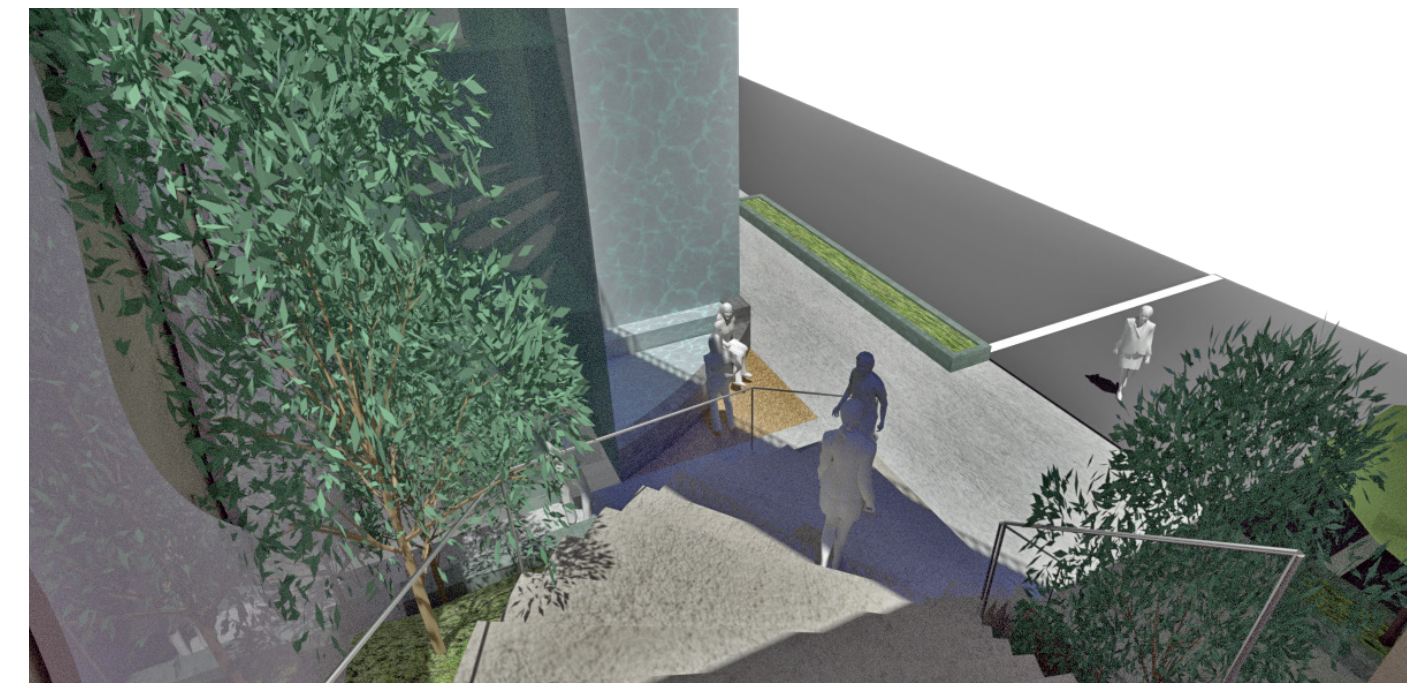


INSPO- WALL MURAL DESIGN

- INVITING
- A MOMENT OF PAUSE
- WAYFINDING
- POCKET PARK
- ACCESSIBLE
- ROTATING WALL ART
- WATER AND REFLECTION

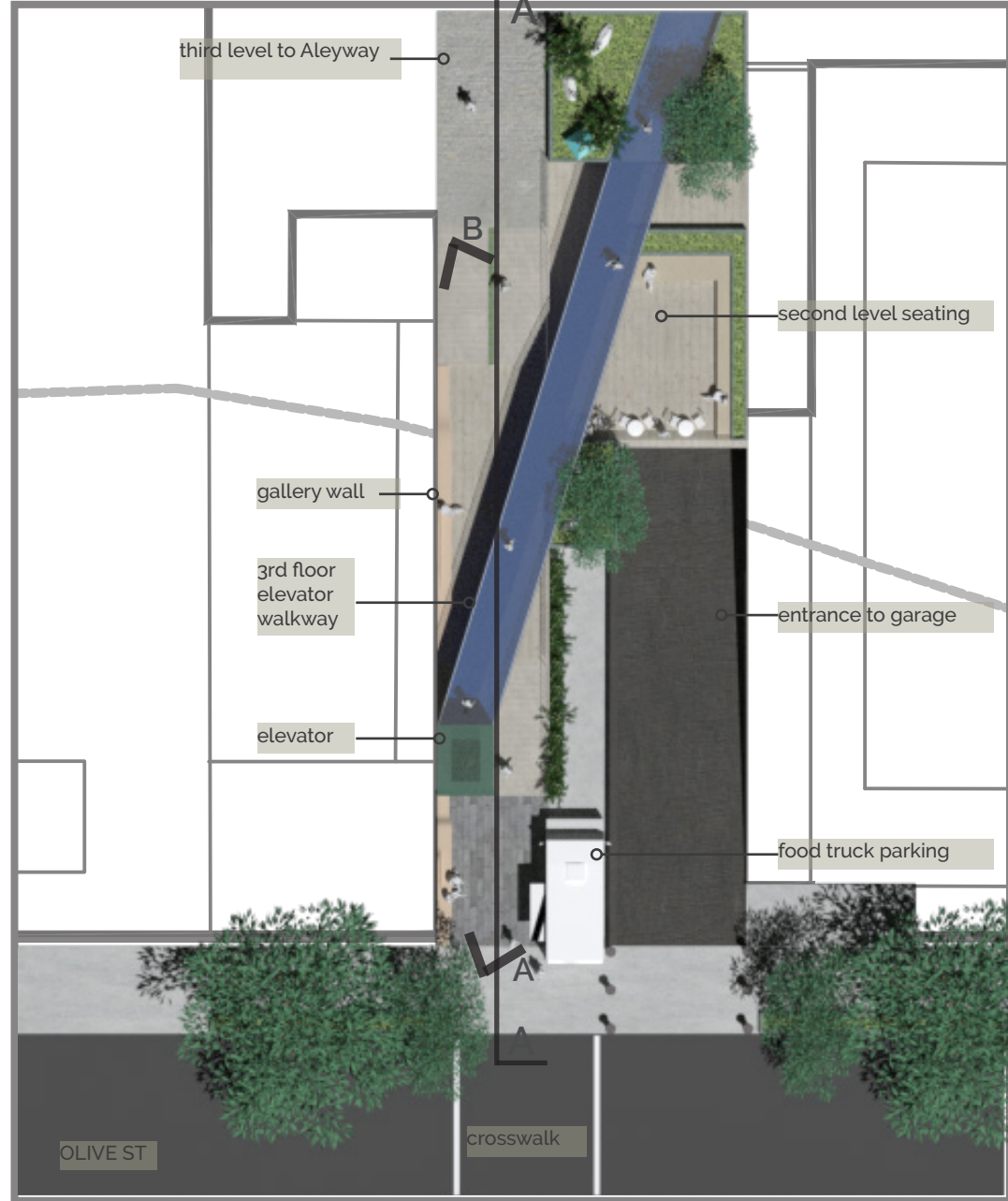


ELEVATION A-A

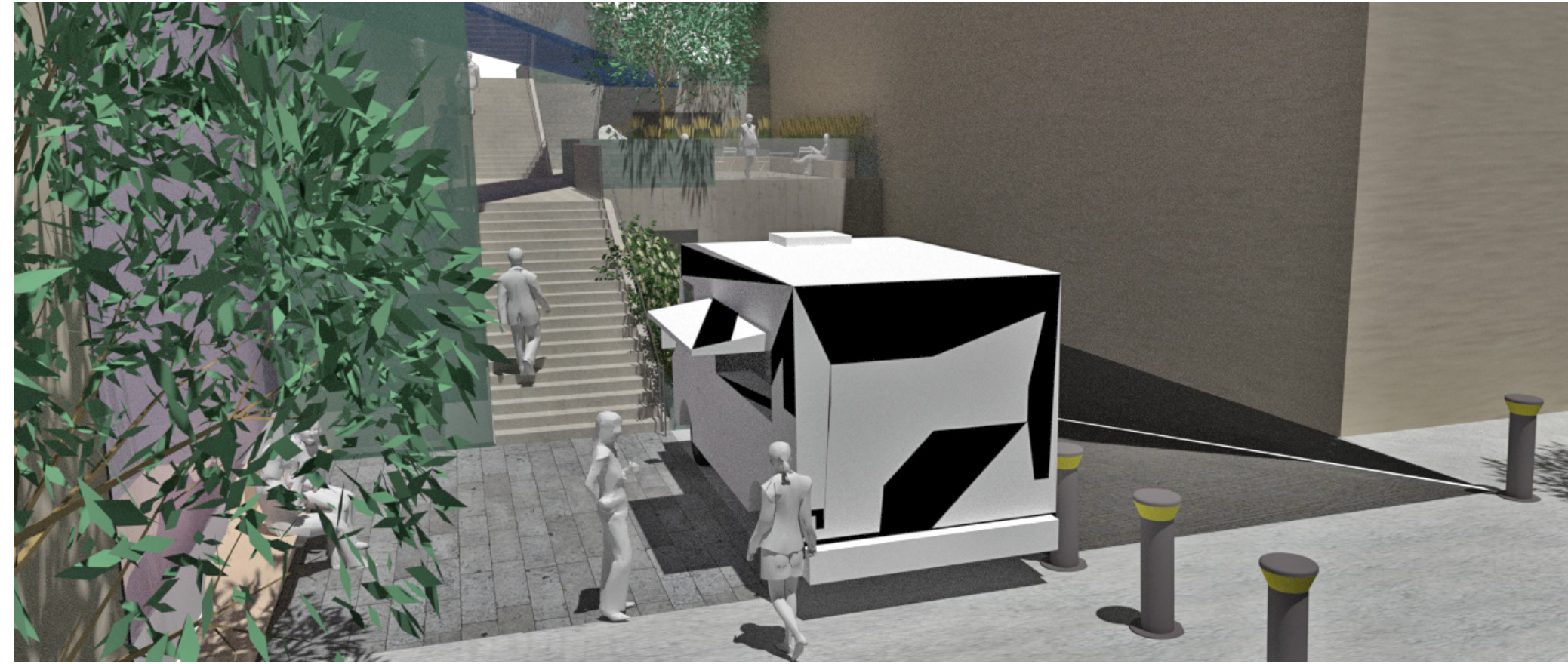
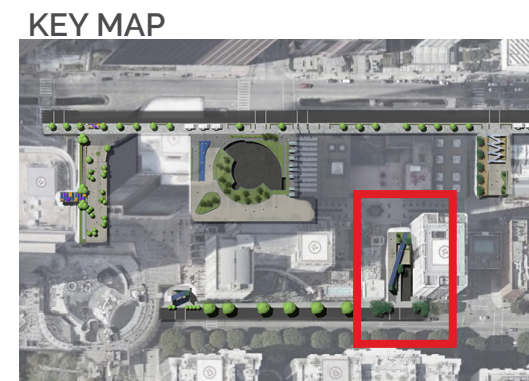


PERSPECTIVE A

FINAL DESIGN- OLIVE'S PASSAGE



PLAN VIEW NTS



PERSPECTIVE A



PERSPECTIVE B

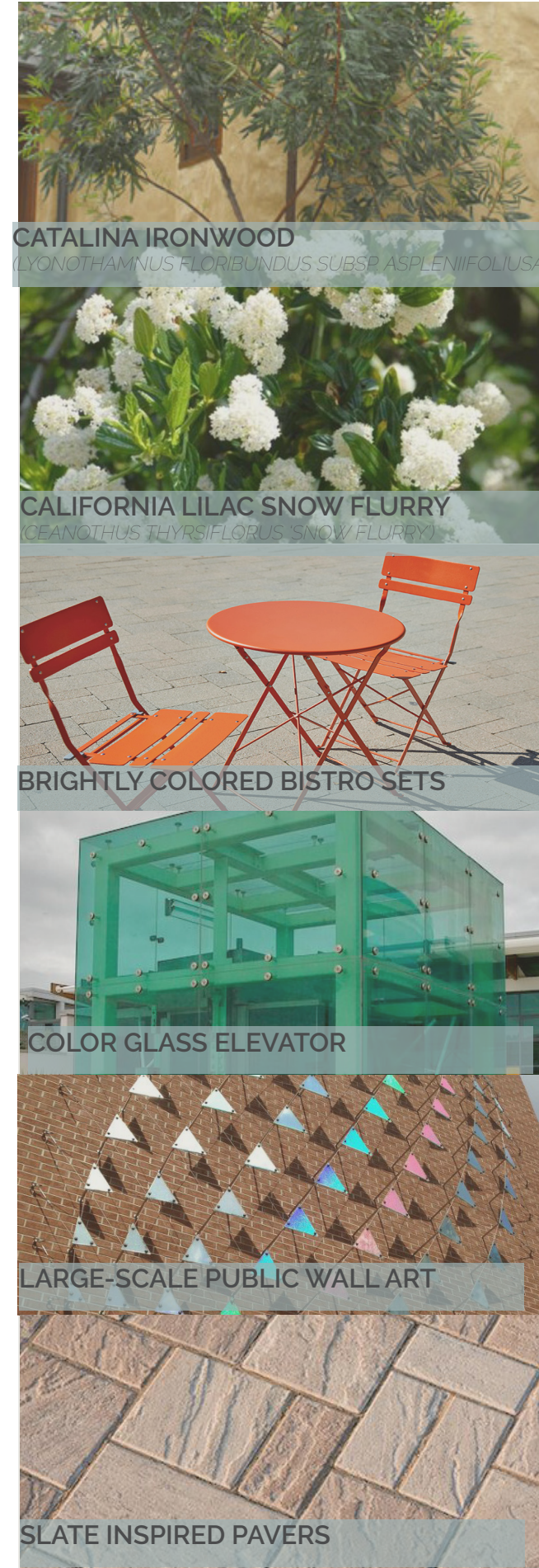
- CHOICES**
- ACTIVITIES**
- CHANGES**
- FLEXIBILITY**
- RETREAT**
- ACCESSIBLE**



SECTION A-A



ISOMETRIC VIEW FROM OLIVE STREET



APPENDIX- BIBLIOGRAPHY

PAGE 2

- <https://www.google.com/maps>
- <https://i.pinimg.com/564x/30/0d/d7/300dd7816624a8296500964322c32e7f.jpg>
- <https://dallasonthecheap.com/lotc-cms/wp-content/uploads/2017/11/family-experiments.jpg>

PAGE 3

- <https://i2.wp.com/3.bp.blogspot.com/-ATfDS6ziOIM/V448szXX83I/AAAAAAAAABLs/P2pE5FKVNdMBoQwWDVmG-8JKz1MYoOE1rwCLcB/s1600/Screen%2BShot%2B2016-07-19%2Bat%2B10.43.02%2BAM.png?ssl=1>
- https://3nwec1qd4zy21zfr339bla3-wpengine.netdna-ssl.com/wp-content/uploads/2019/11/01_Plaza-Entry-at-Congress_Updated-1800x1066.jpg
- Dee, Catherine. *Form and fabric in landscape architecture*. Taylor & Francis, 2004.

PAGE 5

- <https://www.metalocus.es/en/news/ecosistema-urbano-wins-competition-rethink-future-urban-center-west-palm-beach>
- <https://www.dezeen.com/2015/08/08/francis-fontaine-luca-fortin-pascal-labelle-postmodern-inspired-installation-pe-tite-vie-quebec-passageway/>
- https://archinea.pl/oryginalny-pomysl-schody-przestrzeni-miejskiej-krakowa-zwycieska-praca-studia-arch_it/

PAGE 15

- <https://www.southwestboulder.com/products/palomino-coral-decomposed-granite-fines>
- <https://wausautile.com/media/product-colors/G21-Buff-small.jpg>
- <https://www.techo-bloc.com/globalassets/inriver/resources/mini-creta-architectural--wall-sandlewood.jpg>
- <https://fletcherslandscapes.com.au/wp-content/uploads/2020/07/olive-tree-gardenista-733x675.jpg>
- https://www.southwestboulder.com/rails/active_storage/representations/eyJfcmlkZmFpbHMlOnsibWVzc2FnZSI6IkBaHBBb1VYli-wiZXhwIjpudWxsLCJwdXliOiJibGgiX2lkIn19--cd64b59495ad10c5ad68218446ea5c7b03360fb9/eyJfcmlkZmFpbHMlOnsibWVzc2FnZSI6IkBaDdCamgVWVl5dFltbHVhVjIyOjhScGlyNXpld2c2QzNKbGMybDZaVWtpRFRZNU5YZzFOREFoQmpvR1JWUTZER2R-5WVhacGRlEpJZ3RqWlclMfPYSUdPd2RVt2d4eGRXRnNhWF1YVZzPSlsmV4cCl6bnVsbCwicHVyljoidmFyaWFoaWguln19--c589688599fa92d6494aa80337f5048f4d9c9b87/Blasted-Granite-Landscape-Boulders-1.jpg
- <https://store.devilmountainnursery.com/inet/storefront/getimage.php?recid=21222>

PAGE 17

- <http://photos.demandstudios.com/getty/article/188/133/144341234.jpg>
- <https://www.dezeen.com/2015/07/06/so-architecture-ideas-unexpected-hill-triangular-prisms-ceramic-tiles-installation-london-royal-academy-arts/>
- <https://www.landscapearchitect.com/research/lasn/2021/03/img/31976-6.jpg>
- <https://www.techo-bloc.com/shop/pavers/linea/>
- https://www.provenwinners.com/sites/provenwinners.com/files/imagecache/500x500/ifa_upload/bouteloua_blonde_ambition_apj17_3.jpg
- <https://www.gardenia.net/storage/app/public/uploads/images/detail/TDWDdKegkoPJhDOXDov1DzGQbLDP6JVS3s45bGjl.jpeg>

PAGE 18

- <https://i.pinimg.com/originals/c3/8d/82/c38d82ae4161d420b433e2ae3c983df6.jpg>

PAGE 19

- <https://i.pinimg.com/170x/e4/37/8e/e4378e4f57b6959aac5f4f2aae3f3491--tehran-iran-painted-stairs.jpg>

PAGE 21

- <https://i.pinimg.com/564x/74/4f/c4/744fc4843e8e0b3efdf9a76c125e88e9.jpg>
- https://www.techo-bloc.com/globalassets/inriver/resources/patio-paver-slabs-eva-dalle-de-patio-01068_9806_pi.jpg
- <https://www.landscapeforms.com/SiteCollectionImages/Home/Bravo-Banner-04.jpg>
- <https://svad.cah.ucf.edu/wp-content/uploads/sites/5/2018/07/Elliptic-Lens-768x1024.jpg>
- http://www.yerbabuenanursery.com/images/new_botimages/large/0017_3_a.jpg
- <http://cdn.ecommercedns.uk/files/3/205743/8/1341938/ceanothus-snow-flurry.jpg>